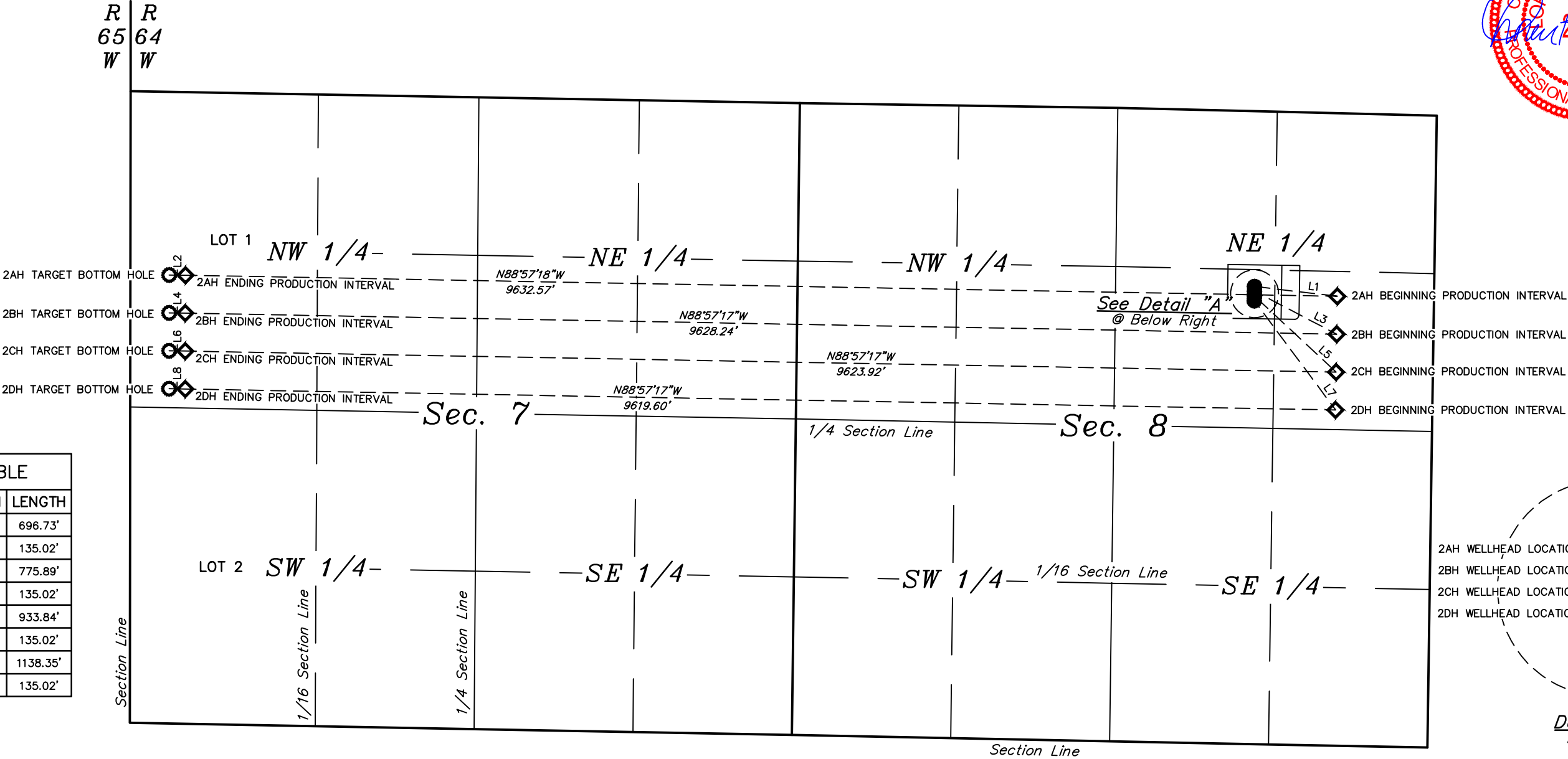
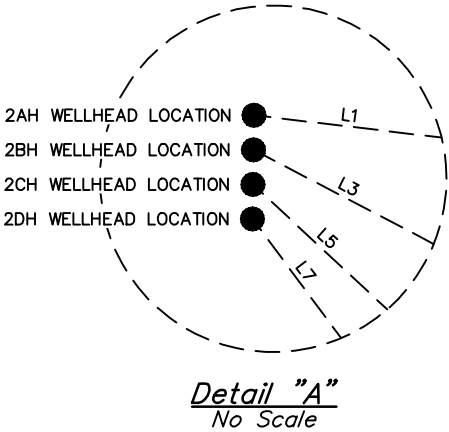




- LEGEND:**
- = WELLHEAD LOCATION.
 - ◇ = PRODUCTION INTERVAL.
 - = TARGET BOTTOM HOLE.



LINE TABLE		
LINE	DIRECTION	LENGTH
L1	S83°12'45"E	696.73'
L2	N88°59'09"W	135.02'
L3	S62°24'31"E	775.89'
L4	N88°59'09"W	135.02'
L5	S47°03'33"E	933.84'
L6	N88°59'09"W	135.02'
L7	S36°38'55"E	1138.35'
L8	N88°59'09"W	135.02'



NOTES:

ConocoPhillips Company

**TIBERIUS #4-64 8-7 2AH, 2BH, 2CH & 2DH
SW 1/4 NE 1/4, SECTION 8, T4S, R64W, 6th P.M.
ARAPAHOE COUNTY, COLORADO**



UELS, LLC
Corporate Office * 85 South 200 East
Vernal, UT 84078 * (435) 789-1017

SURVEYED BY	JAMES FRESHWATER, G.W.	07-20-17	SCALE
DRAWN BY	K.B.	07-24-17	1" = 1000'
MULTI-WELL PLAN			FIGURE #4