

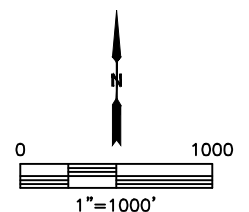
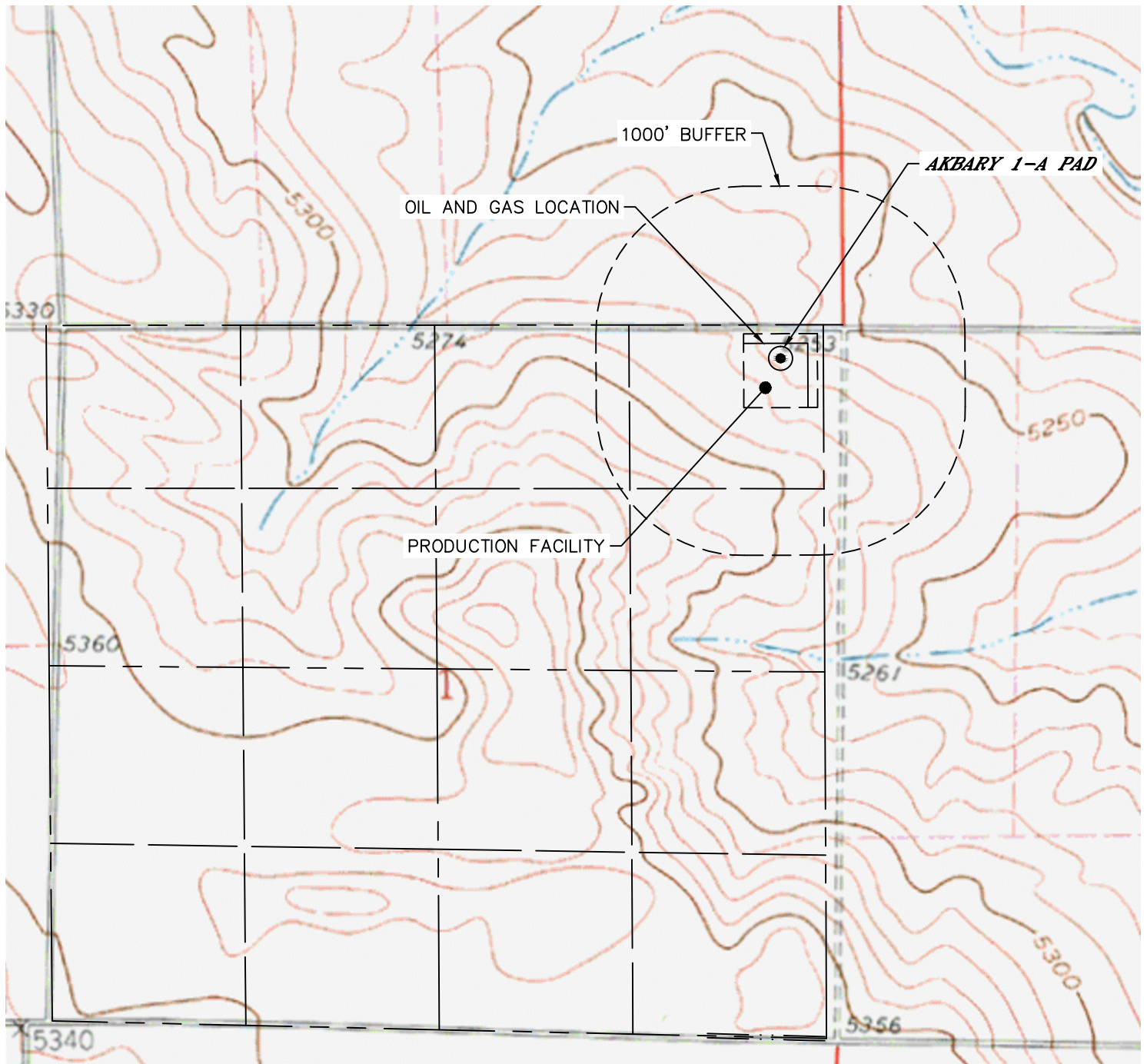


Lat40°, Inc. 6250 W. 10th Street, Unit 2, Greeley, CO 970-515-5294

HYDROLOGY MAP

AKBARY 1-A PAD

SECTION: 1
TOWNSHIP: 8N
RANGE: 67W
6TH. P.M.
WELD COUNTY, CO



NO VISIBLE SURFACE WATER WITHIN 1000'

DATE: 6/14/2018
PROJECT#: 2018061