



Lat40°, Inc. 6250 W. 10th Street, Unit 2, Greeley, CO 970-515-5294

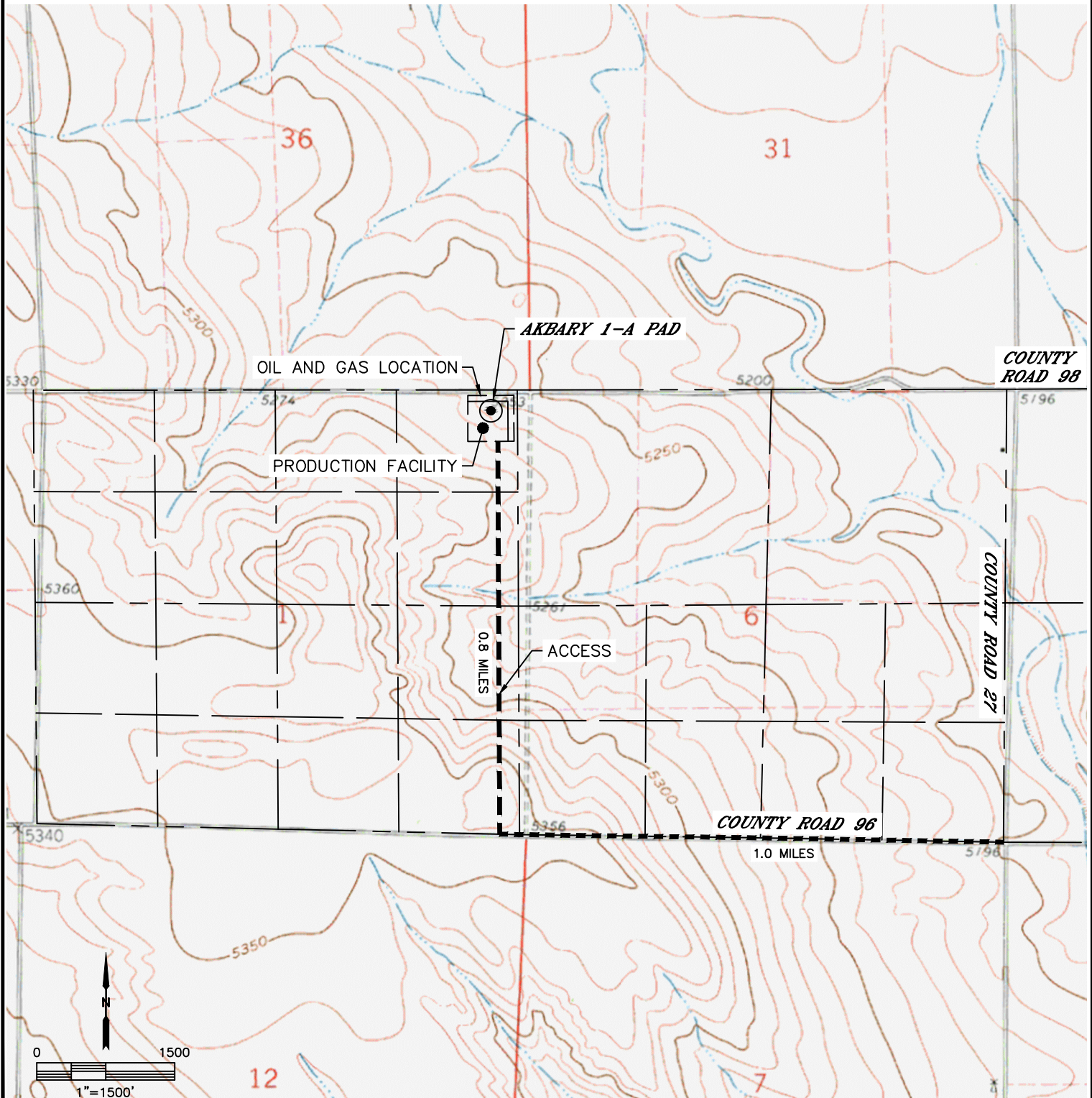
ACCESS ROAD MAP

AKBARY 1-A PAD

SECTION: 1
TOWNSHIP: 8N
RANGE: 67W
6TH. P.M.
WELD COUNTY, CO

DRIVING DIRECTIONS TO AKBARY 1-A PAD

FROM THE INTERSECTION OF COUNTY ROAD 96 AND COUNTY ROAD 27, DRIVE WEST ON COUNTY ROAD 96 FOR 1.0 MILES TO A PROPOSED ACCESS. TURN NORTH AND DRIVE 0.8 MILES ON THE PROPOSED ACCESS TO THE PROPOSED LOCATION.





Lat40°, Inc. 6250 W. 10th Street, Unit 2, Greeley, CO 970-515-5294

ACCESS ROAD MAP

AKBARY 1-A PAD

SECTION: 1
TOWNSHIP: 8N
RANGE: 67W
6TH. P.M.
WELD COUNTY, CO

