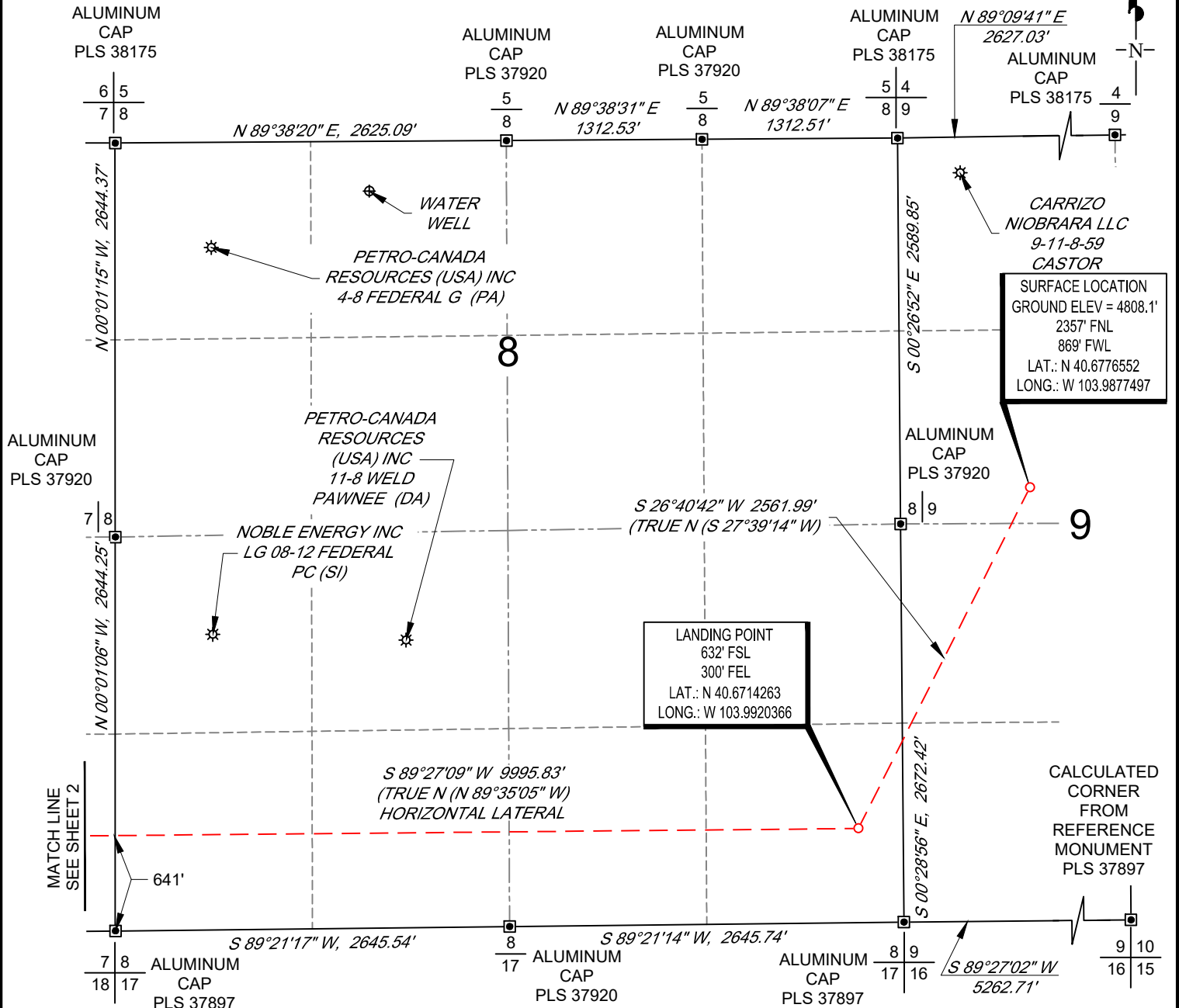


SCALE: 1" = 1000'  
 0' 500' 1000'

### WELL LOCATION MAP

SHL SW/4 NW/4, SECTION 9, TOWNSHIP 8-N, RANGE 59-W  
 LPL SE/4 SE/4, SECTION 8, TOWNSHIP 8-N, RANGE 59-W  
 BHL LOT 4, SECTION 7, TOWNSHIP 8-N, RANGE 59-W  
 WELD COUNTY, COLORADO



#### NOTES

1. Horizontal (NAD 83) and vertical (NAVD 88) datum is based on the Trimble VRS Network or OPUS Solution.
2. All directions, distances, and dimensions shown hereon are based on coordinates from the "Colorado coordinate system of 1983 north zone" (article 52 of title 38, C.R.S.).
3. All section line dimensions shown hereon are based on field measurements of existing monuments and/or physical evidence found in the field unless otherwise indicated.
4. Existing water wells, oil and gas wells per COGCC.
5. See Form 2A, if applicable for visible improvements within 500' of wellhead.
6. Distances to nearest section lines are measured perpendicularly.
7. This is not a land survey nor land survey plat.

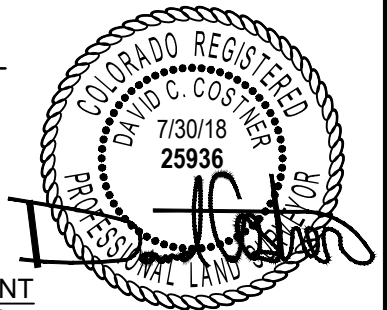
PDOP Reading: 1.5 Instrument Operator: **Eric Purcell**  
 Date Surveyed: **06/22/2018**

#### LEGEND

- ⊛ WELLHEAD
- ⊕ WATER WELL

#### SURVEYOR'S STATEMENT

The undersigned hereby states that the well location shown hereon was staked on the ground based on existing monumentation and/or physical evidence found in the field and is correct to the best of my knowledge, information and belief.



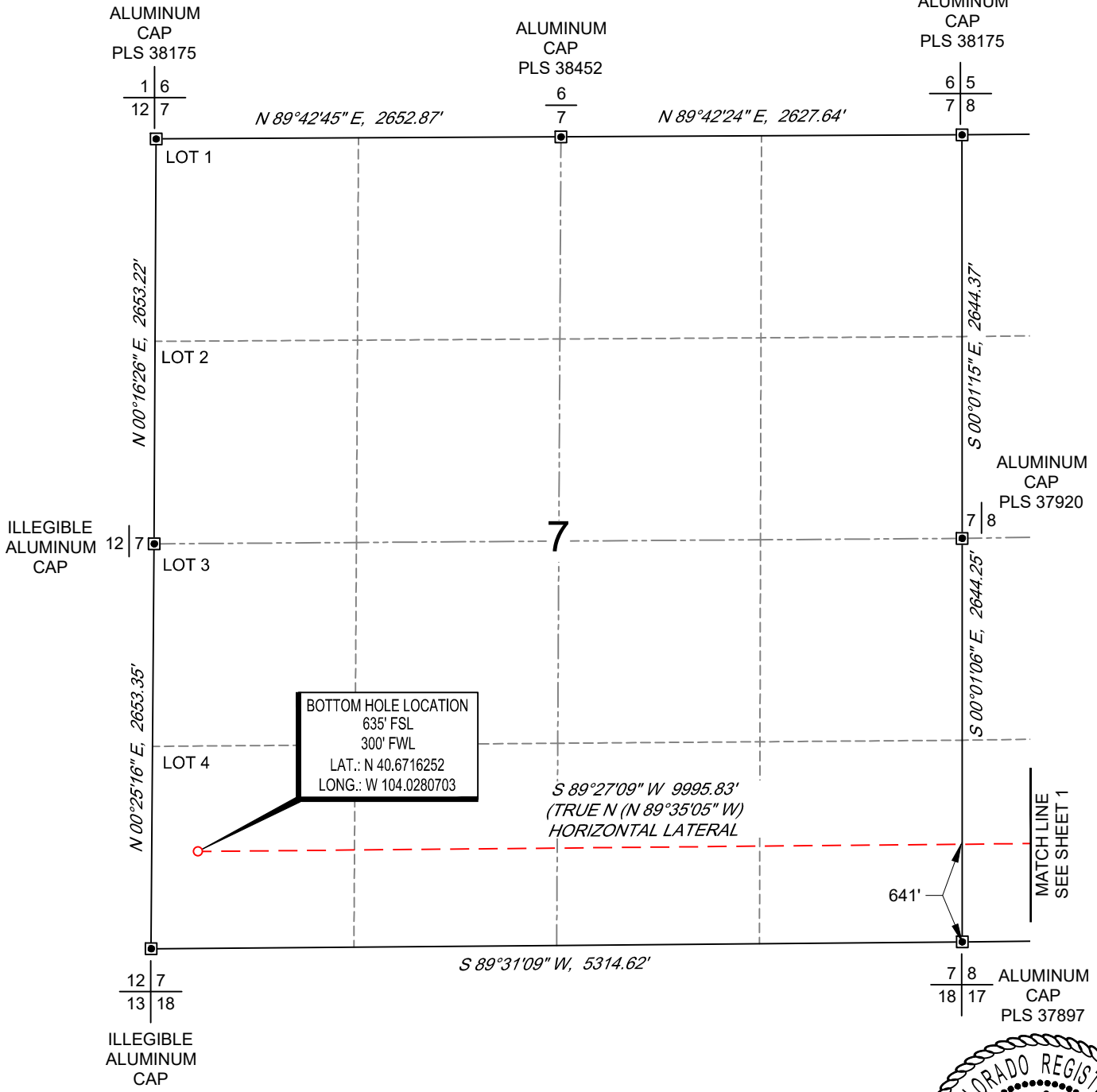
VERDAD RESOURCES DELAND FED 0907-15H JOB NO. 118412	MML	07/30/2018	REVISION:	
	SHEET :	1 OF 2	S.W.	06/27/18
	FILE:LO_DELAND_FED_0907_15H_REV2	JLS	07/30/18	



SCALE: 1" = 1000'  
 0' 500' 1000'

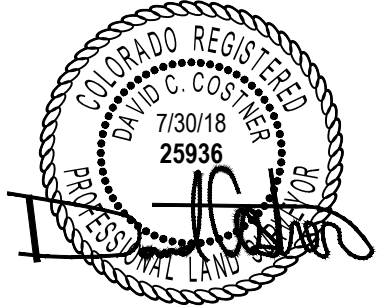
# BOTTOM HOLE MAP

SHL SW/4 NW/4, SECTION 9, TOWNSHIP 8-N, RANGE 59-W  
 LPL SE/4 SE/4, SECTION 8, TOWNSHIP 8-N, RANGE 59-W  
 BHL LOT 4, SECTION 7, TOWNSHIP 8-N, RANGE 59-W  
 WELD COUNTY, COLORADO



**BOTTOM HOLE LOCATION**  
 635' FSL  
 300' FWL  
 LAT.: N 40.6716252  
 LONG.: W 104.0280703

MATCH LINE  
 SEE SHEET 1



VERDAD RESOURCES DELAND FED 0907-15H JOB NO. 118412	MML	07/30/2018	REVISION:	
	SHEET :	2 OF 2	S.W.	06/27/18
	FILE:LO_DELAND_FED_0907_15H_REV2	JLS	07/30/18	

