



Bonanza Creek Energy

Surface Post-Job Report

State North Platte F11-35-2XRLNB

API: 05-123-46472

S:26 T:5N R:63W Weld, CO

Quote #:

I Execution #:



Bonanza Creek Energy

Joel Dill | (303) 893-2503 | JDill@bonanzacrk.com

Bonanza Creek Energy | 730 17th Street, Suite 610 | Denver, CO 80202

Dear Mr. Dill,

Thank you for the opportunity to provide cementing services on this well. BJ Services strives to achieve complete customer satisfaction. If you have any questions regarding the services or data provided, please contact BJ Services at any time.

Sincerely,
Karl Griesser
Field Engineer I | (713) 829-7498 | karl.griesser@bjservices.com

Field Office 1716 East Allison Rd., Cheyenne WY, 82007
Phone: (307) 638-5585

Sales Office 999 18th St. Suite 1200 Denver, CO 80202
Phone: (281) 408-2361

Cementing Treatment



Start Date	5/12/18	Project ID	PRJ1006690
End Date	5/12/18	Field Ticket#	FT-06655-D7V0R50202-49742
Client	BONANZA CREEK ENERGY	Well	STATE NORTH PLATTE F11-35-2XRLNB
Client Field Rep.	Sam	API#	05-123-46472
Service Sup.	Orlando Fuentes	County	WELD
District	Cheyenne, WY	State/Province	CO
Type of Job	Surface	Rig	Xtreme 19
Execution ID	EXC-06655-D7V0R502		

WELL GEOMETRY

Type	ID (in)	OD (in)	Wt. (lb/ft)	MD (ft)	TVD (ft)	Excess(%)
Open Hole	13.50			1,630.00	1,630.00	30.00
Casing	8.92	9.63	36.00	1,620.00	1,620.00	

Shoe Length (ft): 42

HARDWARE

Bottom Plug Used?	No
Top Plug Used?	Yes
Top Plug Provided By	Customer
Top Plug Size	9.625
Centralizers Used	Yes
Centralizers Quantity	16
Centralizers Type	Bow Spring
Landing Collar Depth (ft)	1,578
Max Casing Pressure - Rated (psi)	3520
Max Casing Pressure - Operated (psi)	1419
Pipe Movement	No
Job Pumped Through	2 " iron
Top Connection Thread	LTC
Top Connection Size	9.625

Cementing Treatment



CIRCULATION PRIOR TO JOB

Well Circulated By	Rig	Solids Present at End of Circulation	No
Circulation Prior to Job	Yes	10 sec SGS	3
Circulation Time (min)	60	10 min SGS	4
Circulation Rate (bpm)	8.5	30 min SGS	5
Circulation Volume (bbls)	510	Flare Prior to/during the Cement Job	No
Lost Circulation Prior to Cement Job	No	Gas Present	No
Mud Density In (ppg)	8.7	Gas Units	0
Mud Density Out (ppg)	8.7		
PV Mud In	5		
PV Mud Out	5		
YP Mud In	5		
YP Mud Out	5		

TEMPERATURE

Ambient Temperature (°F)	54	Slurry Cement Temperature (°F)	50
Mix Water Temperature (°F)	50		

BJ FLUID DETAILS

Fluid Type	Fluid Name	Density (ppg)	Yield (Cu Ft/sk)	H2O Req. (gals/sk)	Planned Top of Fluid (Ft)	Length (Ft)	Vol (sk)	Vol (Cu Ft)	Vol (bbls)
Spacer / Pre Flush / Flush	Water (Pre-flush)	8.3308			0.00				20.0000
Tail Slurry	BJCem S100.3.XC	14.5000	1.3901	6.78	0.00	1,600.00	744	1,034.0000	184.1000
Displacement Final	Water	8.3300			0.00			0.0000	120.4000

Fluid Type	Fluid Name	Component	Concentration	UOM
Tail Slurry	BJCem S100.3.XC	FOAM PREVENTER, FP-13L	0.0300	GALS/SK
Tail Slurry	BJCem S100.3.XC	CEMENT, ASTM TYPE III	100.0000	PCT

Cementing Treatment



TREATMENT SUMMARY

Time	Fluid	Rate (bpm)	Fluid Vol. (bbls)	Pipe Pressure (psi)
13:16	Water (Pre-flush)	3.00	20.00	86
13:20	BJCem S100.3.XC	6.00	184.10	307
13:58	Water	6.00	121.97	167

DISPLACEMENT AND END OF JOB SUMMARY

Displaced By	BJ Services	Amount of Cement Returned/Reversed	24
Calculated Displacement Volume (bbls)	121.97	Method Used to Verify Returns	Visual
Actual Displacement Volume (bbls)	122	Amount of Spacer to Surface	20 bbls
Did Float Hold?	Yes	Pressure Left on Casing (psi)	0
Bump Plug	Yes	Amount Bled Back After Job	.5
Bump Plug Pressure (psi)	1419	Total Volume Pumped (bbls)	326.1
Were Returns Planned at Surface	Yes	Top Out Cement Spotted	No
Cement returns During Job	Yes	Lost Circulation During Cement Job	No

Customer Name Bonanza Creek Energy
 Well Name State North Platte F11-35-2XRLNB
 Job Type Surface

District Cheyenne
 Supervisor Orlando Fuentes



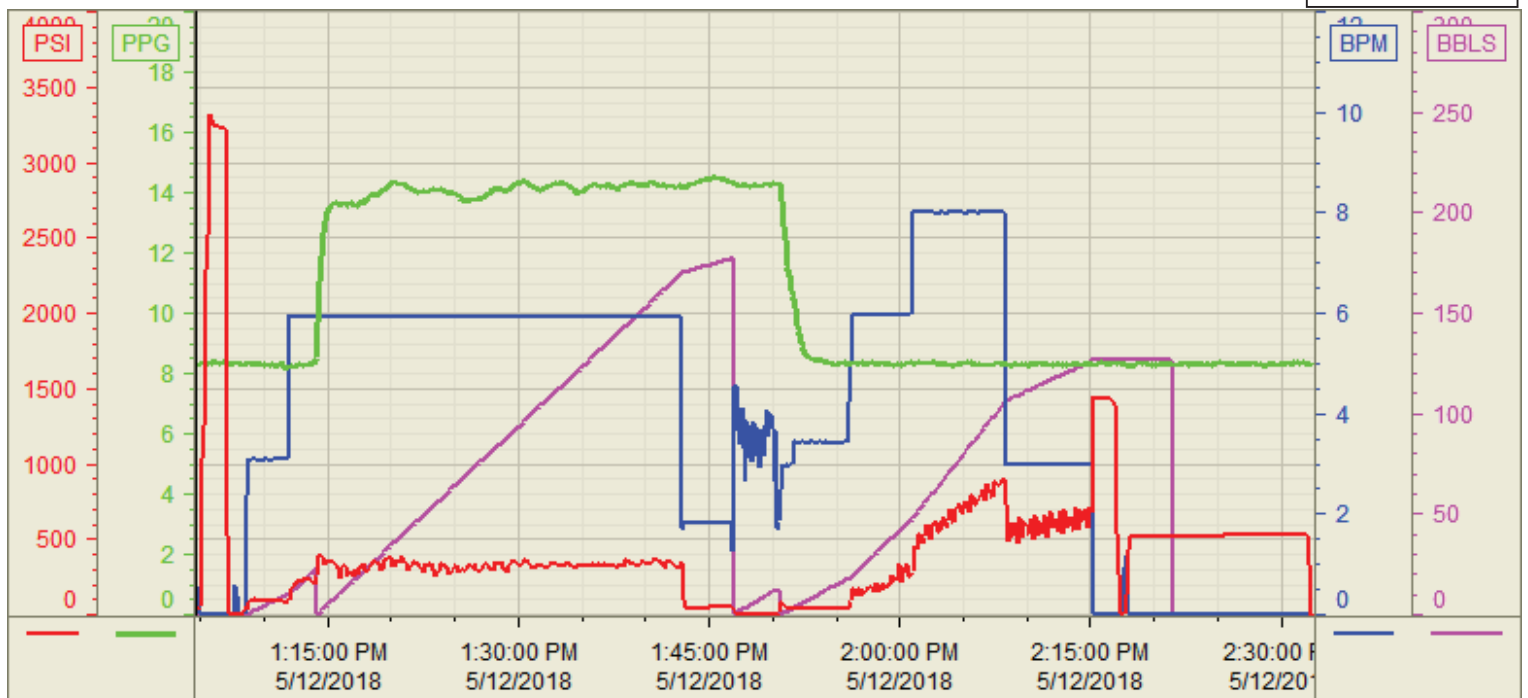
Start Date/Time	Category	Event	Event ID	Density (lb/gal)	Pump Rate (bpm)	Pump Vol (bbls)	Pipe Pressure (psi)	Comments
05/12/2018 8:00	Operational	Callout	1					Bj services crew gets called out
05/12/2018 10:00	Operational	Arrive on Location	48					Bj services crew arrives on location (requested time on location was 20:00 hrs)
05/12/2018 11:00	Operational	Safety Meeting	53					Bj services crew had a pre rig up meeting
05/12/2018 12:00	Operational	Rig Up	50					Bj services crew spots in units and rigs up all equipment and iron
05/12/2018 12:30	Operational	Safety Meeting	53					Bj services crew had a safety meeting with rig hands and co man went over job procedure
05/12/2018 13:13	Operational	Pressure Test	54				3000	Pressure test pumps and lines to 3000 psi
05/12/2018 13:16	Operational	Pump Spacer	56	8.3300	3.00	20.00	86	Pumped 20 bbls of h2o w/ dye tracer at 3 bpm w/86 psi
05/12/2018 13:20	Operational	Pumping Cement	61	14.5000	6.00	184.19	307	Pumped 184.19 bbls of primary cement (744 sks 14.5 ppg 1.3901 yld 6.78 g/sk) at 6 bpm w/ 307 psi
05/12/2018 13:54	Operational	End Pumping	69					Shut down pumping cement
05/12/2018 13:56	Operational	Drop Top Plug	63					Drop top plug
05/12/2018 13:58	Operational	Pump Displacement	64	8.3300	6.00		167	Start Pumping displacement at 6 bpm w/167 psi
05/12/2018 14:08	Operational	Other (See comment)	82	8.3300	8.00	40.00	746	At 40 bbls away speed up rate to 8 bpm w/746 psi
05/12/2018 14:14	Operational	Cement Back to Surface	66	8.3300	8.00	56.00	923	At 96 bbls away into disp got cement to surface at 8 bpm w/923 psi
05/12/2018 14:15	Operational	Other (See comment)	82	8.3300	3.00	4.00	607	AT 100 bbls away into disp slow down rate to 3 bpm w/607 psi
05/12/2018 14:22	Operational	Land Plug	67	8.3300	3.00	20.00	714	Land plug at 120 bbls away final circ pressure was 714 psi , bumped plug to 1419 psi
05/12/2018 14:25	Operational	Check Floats	68					Check floats got .5 bbl back
05/12/2018 14:26	Operational	Other (See comment)	82				512	Casing test - 512 psi hold for 15 min
05/12/2018 14:50	Operational	Safety Meeting	53					Bj services crew had a pre rig down meeting
05/12/2018 15:30	Operational	Rig Down	73					Bj services rigs down all equipment and iron
05/12/2018 16:30	Operational	Leave Location	74					Bj services crew departs location
05/12/2018 16:40	Operational	Other (See comment)	82			24.00		Total Cement to surface - 24 bbls

Customer: Bonanza Creek
Well Number: F11-35-2XRLNC
Lease Info: State North Platte



Print Date/Time

5/12/2018 3:10:44 PM



	Name	Y value	X value/time stamp	Tag name Y
1	DS - Press (PSI)	34.7	5/12/2018 1:04:38 PM	Cementer\DS_DISCHARGE_PRESS_DIAL
2	DH - Density (PPG)	8.31 i.	5/12/2018 1:04:40 PM i.	Cementer\DENSITY2_ACTUAL_RATE
3	Combined Rate (BPM)	0.00 i.	5/12/2018 1:04:40 PM i.	Cementer\Flow_Combined
4	Down Hole Total (BBLs)	-0.0 i.	5/12/2018 1:04:40 PM i.	Cementer\DOWNHOLE_FLOW_TOTAL
5				

Source: Control1 3:10:38 PM