



Bonanza Creek Energy

Production Post Job Report

State North Platte F11-35-2XRLNB

S:26 T:5N R:63W Weld CO

Quote #: | Execution #:





Bonanza Creek Energy

Attention: Mr. Joel Dill | (720) 633-5871 | JDill@bonanzacrk.com

Bonanza Creek Energy | 410 17th St Suite 1400 | Denver, CO. 80202

Dear Mr. Joel Dill,

Thank you for the opportunity to provide cementing services on this well. BJ Services strives to achieve complete customer satisfaction. If you have any questions regarding the services or data provided, please contact BJ Services at any time.

Sincerely,
Jacob Ojeda
Field Engineer I | (763) 516-3012 | jacob.ojeda@bjservices.com

Field Office 1716 East Allison Rd., Cheyenne WY, 82007
Phone: (307) 638-5585

Sales Office 999 18th St. Suite 1200 Denver, CO 80202
Phone: (281) 408-2361

Cementing Treatment



Start Date 5/29/18 **Well** STATE NORTH PLATTE F11-35-2XRLNB
End Date 5/29/18 **API#** 05-123-46472
Client BONANZA CREEK ENERGY **County** WELD
Client Field Rep. Josh Pilkin **State/Province** CO
Service Sup. Roger Acuna **Rig** Xtreme 19
District Cheyenne, WY
Type of Job Long String
Execution ID EXC-07189-W2Y6X002
Project ID PRJ1007225

WELL GEOMETRY

Type	ID (in)	OD (in)	Wt. (lb/ft)	MD (ft)	TVD (ft)	Excess(%)
Previous Casing	8.92	9.63	36.00	1,600.00	1,600.00	
Open Hole	8.50			16,670.00	6,335.00	12.50
Casing	4.89	5.50	17.00	16,660.00	6,335.00	

Shoe Length (ft): 42'

HARDWARE

Bottom Plug Used? No **Max Casing Pressure - Rated (psi)** 7460psi
Top Plug Used? Yes **Max Casing Pressure - Operated (psi)** 3000psi
Top Plug Provided By GE **Pipe Movement** No
Top Plug Size 5 1/2" **Job Pumped Through** Casing
Centralizers Used Yes **Top Connection Thread** LTC
Centralizers Quantity 156 **Top Connection Size** 5 1/2"
Centralizers Type Solid and Bow Spring
Landing Collar Depth (ft) 16,618'

Cementing Treatment



CIRCULATION PRIOR TO JOB

Well Circulated By	Rig	Solids Present at End of Circulation	No
Circulation Prior to Job	Yes	10 sec SGS	7
Circulation Time (min)	180min	10 min SGS	8
Circulation Rate (bpm)	10bpm	30 min SGS	10
Circulation Volume (bbls)	1800bbls	Flare Prior to/during the Cement Job	Yes Prior to
Lost Circulation Prior to Cement Job	No	Gas Present	Yes
Mud Density In (ppg)	9.6ppg	Gas Units	1400 units
Mud Density Out (ppg)	9.6ppg		
PV Mud In	10		
PV Mud Out	10		
YP Mud In	7		
YP Mud Out	7		

TEMPERATURE

Ambient Temperature (°F)	70°	Slurry Cement Temperature (°F)	60°
Mix Water Temperature (°F)	60°	Flow Line Temperature (°F)	247°

Cementing Treatment



BJ FLUID DETAILS

Fluid Type	Fluid Name	Density (ppg)	Yield (Cu Ft/sk)	H2O Req. (gals/sk)	Planned Top of Fluid (Ft)	Length (Ft)	Vol (sk)	Vol (Cu Ft)	Vol (bbls)
Spacer / Pre Flush / Flush	IntegraGuard EZ Spacer	12.0000			0.00				60.0000
Lead Slurry	BJCem P100.3.01C	12.5000	2.1515	12.23	0.00	5,000.00	608	1,307.0000	232.7000
Tail Slurry	BJCem P50.6.02C	13.5000	1.4772	7.45	5,000.00	11,606.00	2,029	2,997.0000	533.7000
Displacement 2	Retarded Water	8.3337			13,244.00	0.00	0	0.0000	20.0000
Displacement Final	Displacement Final (Water)	8.3308			0.00			0.0000	365.1000

Cementing Treatment



Fluid Type	Fluid Name	Component	Concentration	UOM
Spacer / Pre Flush / Flush	IntegraGuard EZ Spacer	RETARDER, R-31	0.2700	PPB
Spacer / Pre Flush / Flush	IntegraGuard EZ Spacer	GELLANT WATER, GW-86	1.0000	PPB
Spacer / Pre Flush / Flush	IntegraGuard EZ Spacer	SPACER SURFACTANT, SS-247	0.5000	GPB
Spacer / Pre Flush / Flush	IntegraGuard EZ Spacer	SAND, S-8, Silica Flour, 200 Mesh	242.2100	PPB
Spacer / Pre Flush / Flush	IntegraGuard EZ Spacer	EXTENDER, BENTONITE	5.0000	PPB
Spacer / Pre Flush / Flush	IntegraGuard EZ Spacer	SPACER SURFACTANT, SS-267	0.5000	GPB
Lead Slurry	BJCem P100.3.01C	CEMENT, ASTM TYPE III	100.0000	PCT
Lead Slurry	BJCem P100.3.01C	FOAM PREVENTER, FP-25	0.3000	BWOB
Lead Slurry	BJCem P100.3.01C	BONDING AGENT, BA-60	0.4000	BWOB
Lead Slurry	BJCem P100.3.01C	RETARDER, R-31	0.1100	BWOB
Lead Slurry	BJCem P100.3.01C	GELLANT WATER, GW-86	0.2000	BWOB
Lead Slurry	BJCem P100.3.01C	FLUID LOSS, FL-24	0.3000	BWOB
Lead Slurry	BJCem P100.3.01C	IntegraSeal CELLO	0.1300	LBS/SK
Lead Slurry	BJCem P100.3.01C	EXTENDER, BENTONITE	4.0000	BWOB
Tail Slurry	BJCem P50.6.02C	GELLANT WATER, GW-86	0.1000	BWOB
Tail Slurry	BJCem P50.6.02C	Flyash (Rockies)	50.0000	PCT
Tail Slurry	BJCem P50.6.02C	CEMENT, CLASS G	50.0000	PCT
Tail Slurry	BJCem P50.6.02C	FLUID LOSS, FL-66	0.2000	BWOB
Tail Slurry	BJCem P50.6.02C	EXTENDER, BENTONITE	2.0000	BWOB
Tail Slurry	BJCem P50.6.02C	FOAM PREVENTER, FP-25	0.3000	BWOB
Tail Slurry	BJCem P50.6.02C	RETARDER, SR-20	0.0700	BWOB
Displacement 2	Retarded Water	RETARDER, R-8L	0.5000	GPB
Displacement 2	Retarded Water	BIOCIDE, BIOC11139W	0.0100	GPB
Displacement Final	Displacement Final (Water)	BIOCIDE, BIOC11139W	0.0100	GPB

Cementing Treatment



DISPLACEMENT AND END OF JOB SUMMARY

Displaced By	BJ Services	Amount of Cement Returned/Reversed	60bbls
Calculated Displacement Volume (bbls)	385.5bbls	Method Used to Verify Returns	Visual
Actual Displacement Volume (bbls)	385.5bbls	Amount of Spacer to Surface	60bbls
Did Float Hold?	Yes	Pressure Left on Casing (psi)	0psi
Bump Plug	Yes	Amount Bled Back After Job	2.5bbls
Bump Plug Pressure (psi)	3200psi	Total Volume Pumped (bbls)	1213.5bbls
Were Returns Planned at Surface	Yes	Top Out Cement Spotted	No
Cement returns During Job	Yes	Lost Circulation During Cement Job	No

EVENT LOG

Service Line Cementing

Client BONANZA CREEK ENERGY
 District Cheyenne, WY



Quotes: QUO-11608-Y4N9K4
 Plans: ORD-07189-W2Y6X0
 Executions: EXC-07189-W2Y6X002

Seq.	Well	Job Type	BJ Sup.	Start Dt./Time	End Dt./Time	Category	Event	Density (ppg)	Pump Rate (bpm)	Pump Vol (bbls)	Pipe Pressure (psil)	Comments
1	STATE NORTH PLATTE F11-35-2XRLNB	Long String	Roger Acuna	05/29/2018 13:36	05/29/2018 13:37	Operational	Callout					CALLED OUT RTS 18:00
2	STATE NORTH PLATTE F11-35-2XRLNB	Long String	Roger Acuna	05/29/2018 14:15	05/29/2018 14:30	Operational	Safety Meeting					JOURNEY MANAGEMENT WITH BJ CREW TO DISCUSS ROUTES AND HAZARDS
3	STATE NORTH PLATTE F11-35-2XRLNB	Long String	Roger Acuna	05/29/2018 14:30	05/29/2018 16:30	Mobilization	Leave Location					DEPART CHEYENNE CAMP
4	STATE NORTH PLATTE F11-35-2XRLNB	Long String	Roger Acuna	05/29/2018 16:30	05/29/2018 16:45	Operational	Arrive on Location					ARRIVED TO LOCATION, CHECKED IN WITH COMPANY MAN, OH 8 1/2" 16670', 5 1/2" CSG 16660', 9 5/8" CASING 1628', 9.6PPG MUD
5	STATE NORTH PLATTE F11-35-2XRLNB	Long String	Roger Acuna	05/29/2018 16:45	05/29/2018 17:45	StandBy	Customer					WAITING ON RIG TO FINISH RUNNING CASING
6	STATE NORTH PLATTE F11-35-2XRLNB	Long String	Roger Acuna	05/29/2018 17:45	05/29/2018 18:00	Operational	Safety Meeting					STEACS WITH BJ CREW ON SPOTTING EQUIPMENT AND RIGGING IN IRON AND HOSES
7	STATE NORTH PLATTE F11-35-2XRLNB	Long String	Roger Acuna	05/29/2018 18:00	05/29/2018 19:00	Operational	Rig Up					RIG IN IRON AND HOSES
8	STATE NORTH PLATTE F11-35-2XRLNB	Long String	Roger Acuna	05/29/2018 19:00	05/29/2018 20:45	StandBy	Customer					WAITING ON RIG TO CIRCULATE WELL 2 BOTTOMS UP
9	STATE NORTH PLATTE F11-35-2XRLNB	Long String	Roger Acuna	05/29/2018 20:45	05/29/2018 21:15	Operational	Safety Meeting					PRE JOB SAFETY MEETING WITH BJ CREW, RIG CREW, TOOL HAND, AND COMPANY MAN
10	STATE NORTH PLATTE F11-35-2XRLNB	Long String	Roger Acuna	05/29/2018 21:19	05/29/2018 21:20	Operational	Start Pumping	8.3300	2.00	2.00	300.00	START JOB, FILL LINES 2BBLS FRESH WATER

EVENT LOG

Service Line Cementing

Client BONANZA CREEK ENERGY
 District Cheyenne, WY



11	STATE NORTH PLATTE F11-35-2XRLNB	Long String	Roger Acuna	05/29/2018 21:21	05/29/2018 21:27	Operational	Pressure Test				5,000.00	TEST LINES 5000PSI
12	STATE NORTH PLATTE F11-35-2XRLNB	Long String	Roger Acuna	05/29/2018 21:27	05/29/2018 21:34	Operational	Pump Spacer	12.0000	3.00	20.00	100.00	PUMP 20BBLS SPACER @ 12PPG WITH SURFACTANTS
13	STATE NORTH PLATTE F11-35-2XRLNB	Long String	Roger Acuna	05/29/2018 21:34	05/29/2018 21:40	Operational	Pump Spacer	11.5000	3.00	20.00	100.00	PUMP 20BBLS SPACER @ 11.5PPG WITH SURFACTANTS
14	STATE NORTH PLATTE F11-35-2XRLNB	Long String	Roger Acuna	05/29/2018 21:40	05/29/2018 21:47	Operational	Pump Spacer	11.0000	3.00	20.00	100.00	PUMP 20BBLS SPACER @ 11PPG WITH SURFACTANTS
15	STATE NORTH PLATTE F11-35-2XRLNB	Long String	Roger Acuna	05/29/2018 21:47	05/29/2018 22:40	Operational	Pump Lead Cement	12.5000	6.00	233.00	300.00	PUMP 233BBLS LEAD CEMENT @ 12.5PPG (608SKS 2.15YLD 12.23GPGS)
16	STATE NORTH PLATTE F11-35-2XRLNB	Long String	Roger Acuna	05/29/2018 22:40	05/30/2018 00:18	Operational	Pump Tail Cement	13.5000	6.00	535.00	300.00	PUMP 535BBLS TAIL CEMENT @ 13.5PPG (2029SKS 1.48YLD 7.45GPGS)
17	STATE NORTH PLATTE F11-35-2XRLNB	Long String	Roger Acuna	05/30/2018 00:18	05/30/2018 00:22	Operational	Clean Pumps and Lines					SHUTDOWN WASH PUMPS AND LINES TO THE PIT
18	STATE NORTH PLATTE F11-35-2XRLNB	Long String	Roger Acuna	05/30/2018 00:22	05/30/2018 00:23	Operational	Drop Top Plug					DROP DART PLUG
19	STATE NORTH PLATTE F11-35-2XRLNB	Long String	Roger Acuna	05/30/2018 00:23	05/30/2018 01:05	Operational	Pump Displacement	8.3300	8.00	365.00	1,500.00	START DISPLACEMENT
20	STATE NORTH PLATTE F11-35-2XRLNB	Long String	Roger Acuna	05/30/2018 00:57	05/30/2018 01:05	Operational	Spacer Back to Surface					SPACER TO SURFACE @ 265BBLS AWAY IN DISPLACEMENT
21	STATE NORTH PLATTE F11-35-2XRLNB	Long String	Roger Acuna	05/30/2018 01:05	05/30/2018 01:10	Operational	Cement Back to Surface					CEMENT TO SURFACE @ 325BBLS AWAY IN DISPLACEMENT
22	STATE NORTH PLATTE F11-35-2XRLNB	Long String	Roger Acuna	05/30/2018 01:10	05/30/2018 01:14	Operational	Other (See comment)	8.3300	5.00	20.50	2,200.00	SLOW RATE TO BUMP PLUG

EVENT LOG

Service Line Cementing

Client BONANZA CREEK ENERGY

District Cheyenne, WY



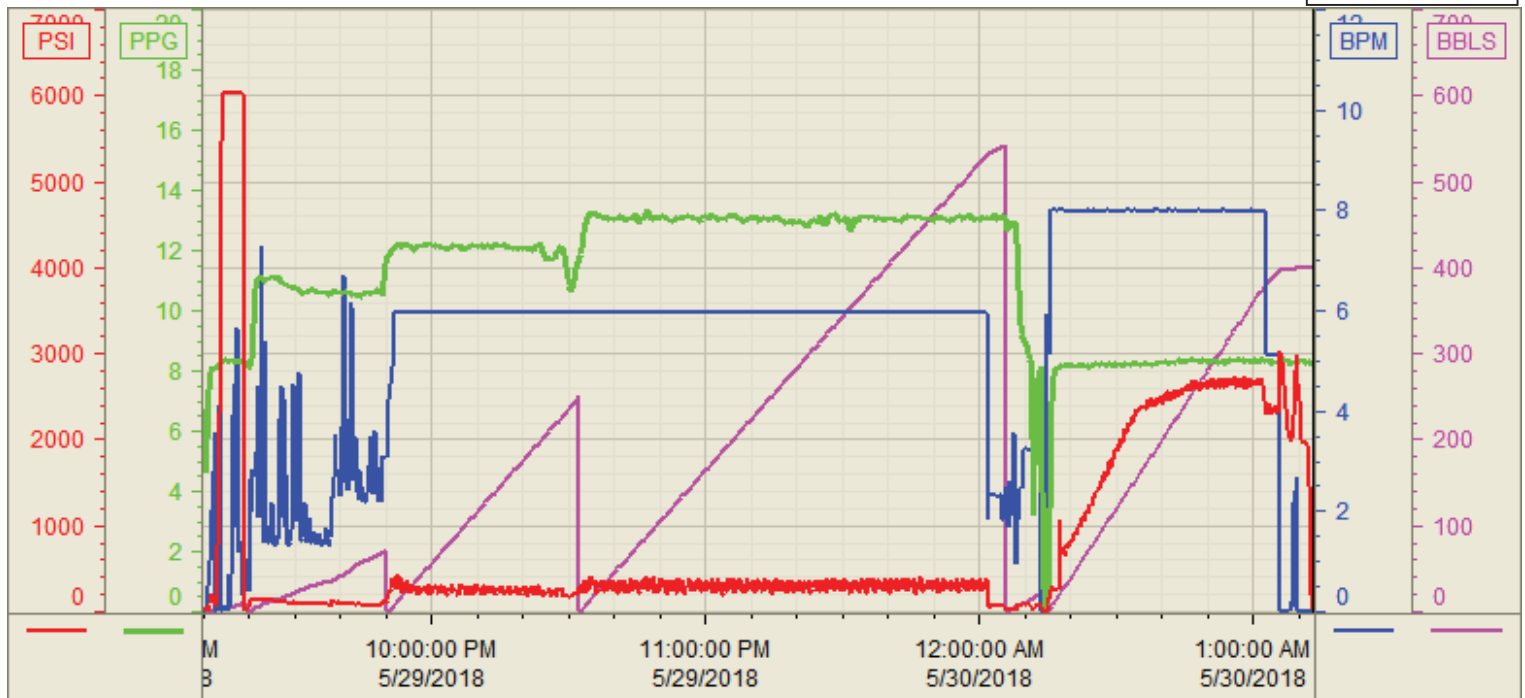
23	STATE NORTH PLATTE F11-35-2XRLNB	Long String	Roger Acuna	05/30/2018 01:14	05/30/2018 01:19	Operational	Land Plug				3,200.00	BUMP PLUG 1000PSI OVER FINAL CIRCULATING PRESSURE, PLUG LANDED BUT DIDN'T LATCH UP, PRESSURED BACK UP ON PLUG BUT FAILED TO LATCH AGAIN
24	STATE NORTH PLATTE F11-35-2XRLNB	Long String	Roger Acuna	05/30/2018 01:19	05/30/2018 01:20	Operational	Check Floats					CHECK FLOATS, FLOATS HELD GETTIGN 2.5BBLS BACK TO THE PUMP
25	STATE NORTH PLATTE F11-35-2XRLNB	Long String	Roger Acuna	05/30/2018 01:45	05/30/2018 02:00	Operational	Safety Meeting					STEACS RIG OUT WITH BJ CREW TO DISCUSS HAZARDS
26	STATE NORTH PLATTE F11-35-2XRLNB	Long String	Roger Acuna	05/30/2018 02:00	05/30/2018 02:30	Operational	Rig Down					RIG OUT IRON AND HOSES
27	STATE NORTH PLATTE F11-35-2XRLNB	Long String	Roger Acuna	05/30/2018 02:45	05/30/2018 03:00	Operational	Safety Meeting					JOURNEY MANAGEMENT WITH BJ CREW TO DISCUSS ROUTES AND HAZARDS
28	STATE NORTH PLATTE F11-35-2XRLNB	Long String	Roger Acuna	05/30/2018 03:00		Mobilization	Leave Location					DEPART LOCATION

Customer: Bonanza Creek
 Well Number: F11-35-2XRLNB
 Lease Info: State North Platte



Print Date/Time

5/30/2018 1:54:20 AM



	Name	Y value	X value/time stamp	Tag name Y
1	DS - Press (PSI)	14.3 i.	5/30/2018 1:13:00 AM i.	Cementer\DS_DISCHARGE_PRESS_DIAL
2	DH - Density (PPG)	8.28	5/30/2018 1:13:02 AM	Cementer\DENSITY2_ACTUAL_RATE
3	Combined Rate (BPM)	0.00	5/30/2018 1:13:02 AM	Cementer\Flow_Combined
4	Down Hole Total (BBLs)	399.8	5/30/2018 1:13:02 AM	Cementer\DOWNHOLE_FLOW_TOTAL
5				

Source: Control1 1:54:14 AM