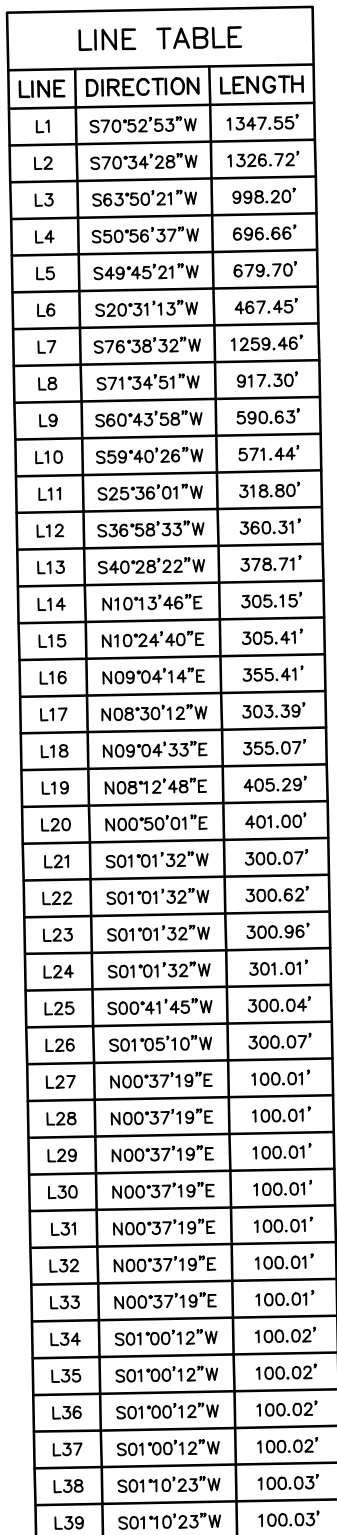


UINTAH
ENGINEERING & LAND SURVEYING



REV: 1 08-03-18 C.IVIE (BPI MOVE

BISON OIL & GAS II

HUNT 8-60 17C PAD
SE 1/4 NE 1/4, SECTION 17, T8N, R60W, 6th P.M.
WELD COUNTY, COLORADO

SURVEYED BY	JAMES FRESHWATER, N.W.	05-25-18	SCALE
DRAWN BY	T.S.	07-09-18	1" = 1000'

MULTI-WELL PLAN

FIGURE #5