



PHOTO: VIEW OF REFERENCE AREA

CAMERA ANGLE: NORTHERLY

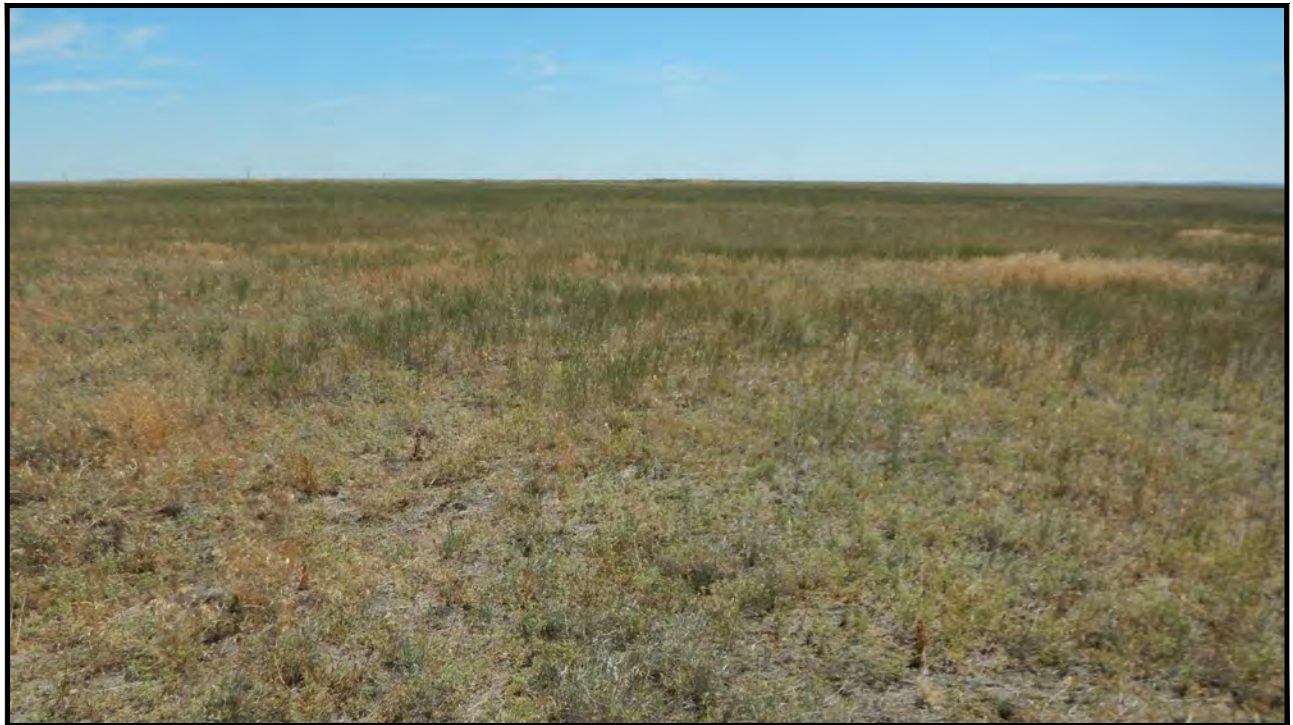


PHOTO: VIEW OF REFERENCE AREA

CAMERA ANGLE: EASTERLY

BISON OIL & GAS II

**HUNT 8-60 17C PAD
SE 1/4 NE 1/4, SECTION 17, T8N, R60W, 6th P.M.
WELD COUNTY, COLORADO**



UELS, LLC
Corporate Office * 85 South 200 East
Vernal, UT 84078 * (435) 789-1017

TAKEN BY	J.F.	07-19-17	
DRAWN BY	J.L.G.	08-08-17	
REFERENCE AREA PHOTOS			REF 1

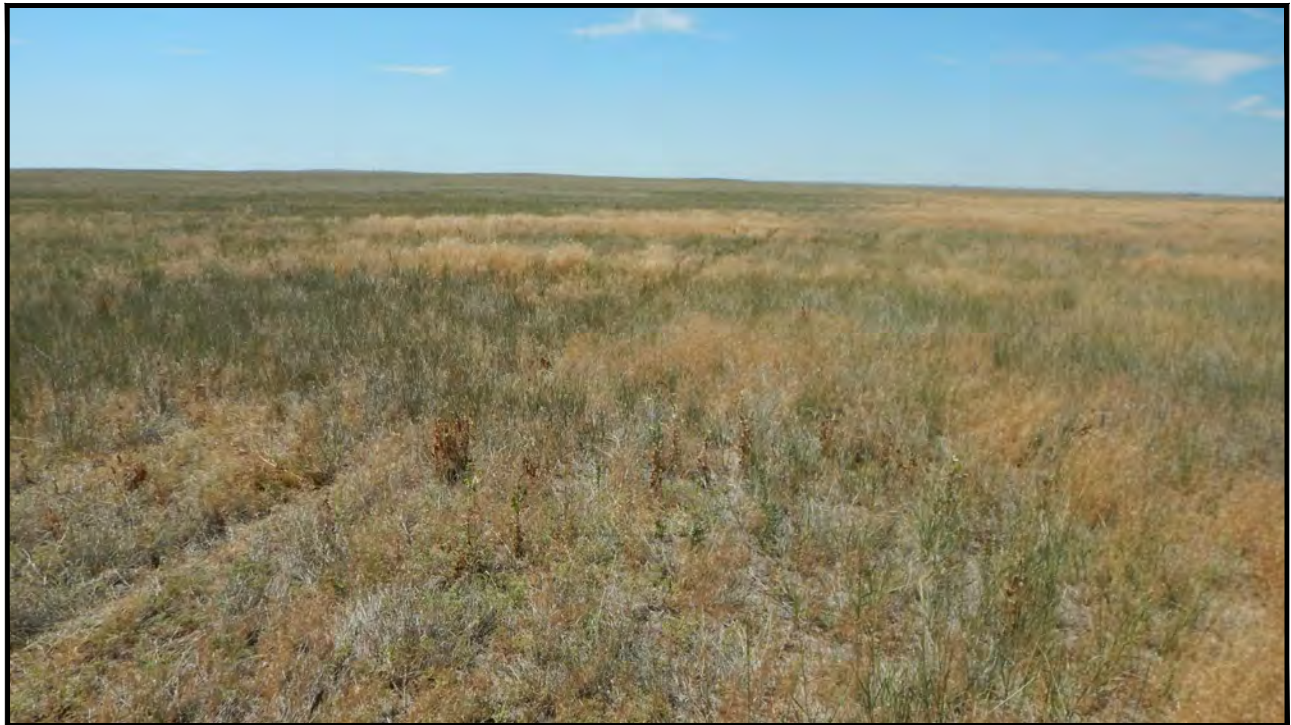


PHOTO: VIEW OF REFERENCE AREA

CAMERA ANGLE: SOUTHERLY



PHOTO: VIEW OF REFERENCE AREA

CAMERA ANGLE: WESTERLY

BISON OIL & GAS II

**HUNT 8-60 17C PAD
SE 1/4 NE 1/4, SECTION 17, T8N, R60W, 6th P.M.
WELD COUNTY, COLORADO**



UELS, LLC
Corporate Office * 85 South 200 East
Vernal, UT 84078 * (435) 789-1017

TAKEN BY	J.F.	07-19-17	
DRAWN BY	J.L.G.	08-08-17	
REFERENCE AREA PHOTOS			REF 2