



PHOTO: VIEW OF REFERENCE AREA

CAMERA ANGLE: NORTHERLY



PHOTO: VIEW OF REFERENCE AREA

CAMERA ANGLE: EASTERLY

BISON OIL & GAS II

HUNT 8-60 17B PAD
SW 1/4 NE 1/4, SECTION 17, T8N, R60W, 6th P.M.
WELD COUNTY, COLORADO

TAKEN BY	G.W., C.T.	07-20-17	
DRAWN BY	J.L.G.	08-08-17	
REFERENCE AREA PHOTOS			REF 1



UELS, LLC
 Corporate Office * 85 South 200 East
 Vernal, UT 84078 * (435) 789-1017



PHOTO: VIEW OF REFERENCE AREA

CAMERA ANGLE: SOUTHERLY

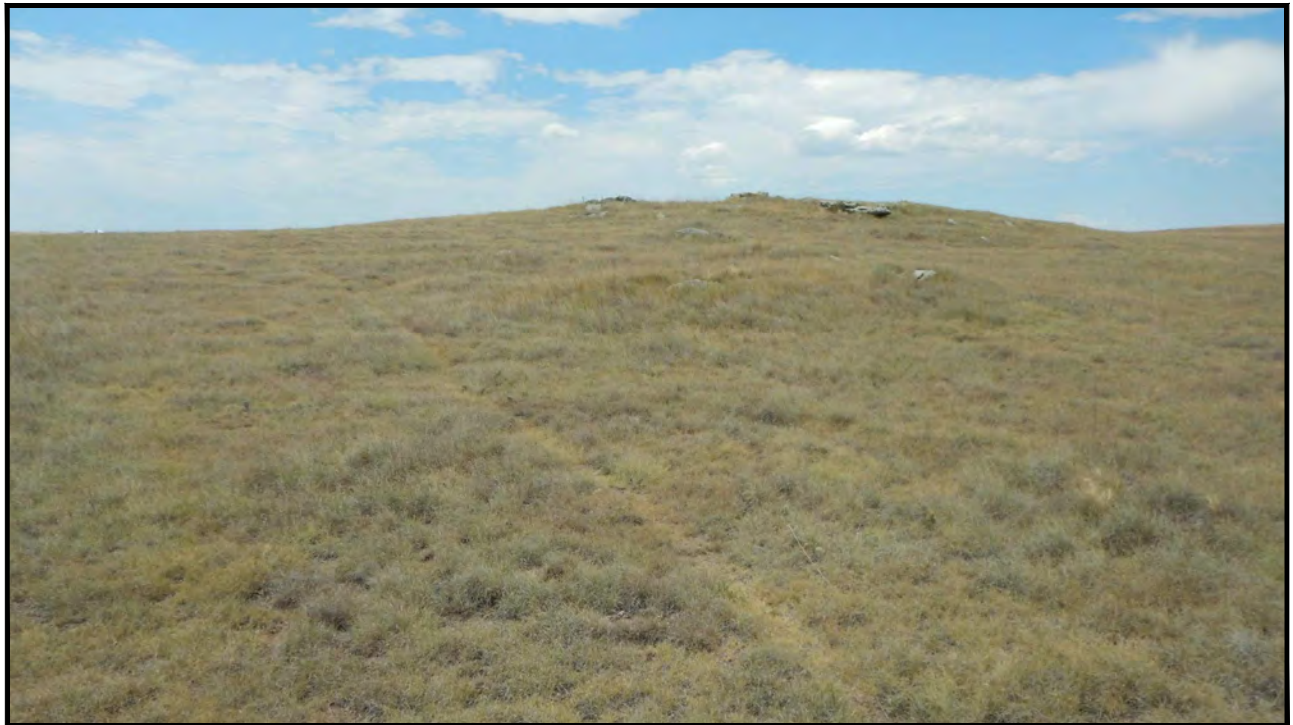


PHOTO: VIEW OF REFERENCE AREA

CAMERA ANGLE: WESTERLY

BISON OIL & GAS II

**HUNT 8-60 17B PAD
SW 1/4 NE 1/4, SECTION 17, T8N, R60W, 6th P.M.
WELD COUNTY, COLORADO**



UELS, LLC
Corporate Office * 85 South 200 East
Vernal, UT 84078 * (435) 789-1017

TAKEN BY	G.W., C.T.	07-20-17	
DRAWN BY	J.L.G.	08-08-17	
REFERENCE AREA PHOTOS			REF 2