

WELL LOCATION CERTIFICATE

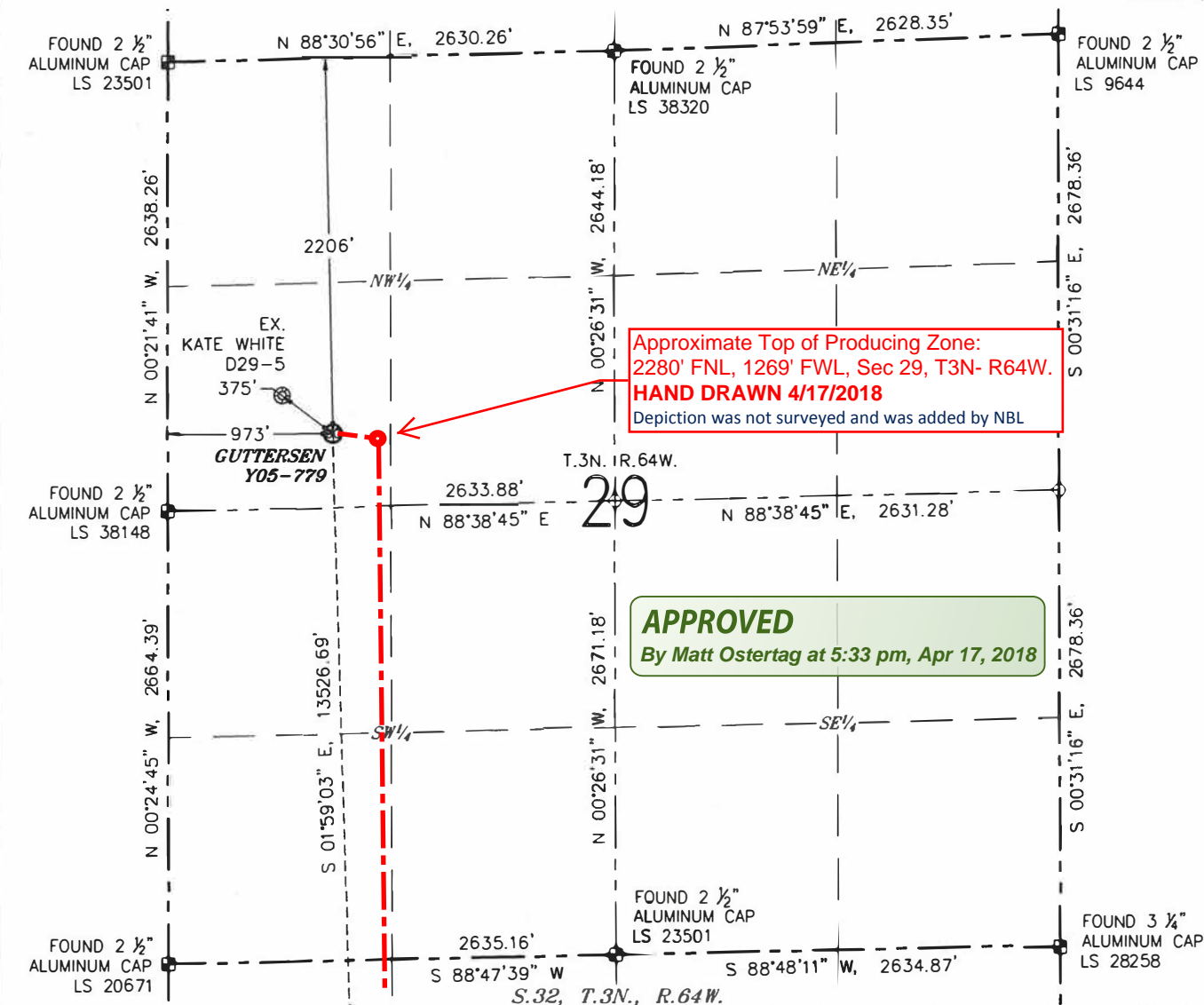
GUTTERSEN Y05-779

(SHEET 1 OF 3)

SECTION: 29

TOWNSHIP: 3N

RANGE: 64W



NOTES:

1. BEARINGS ARE GRID BEARINGS OF THE COLORADO STATE PLANE COORDINATE SYSTEM, NORTH ZONE, NAD 83. THE LINEAL DIMENSIONS SHOWN HEREON ARE BASED UPON THE "U.S. SURVEY FOOT".
2. GROUND ELEVATIONS ARE BASED UPON NGS OPUS SOLUTION NAVD 88 DATUM COMPUTED USING GEOID09.
3. IMPROVEMENTS: SEE LOCATION DRAWING FOR ALL VISIBLE IMPROVEMENTS WITHIN 500' OF THE DISTURBED AREA.
4. SURFACE USE: RANGELAND.
5. INSTRUMENT OPERATOR: JASON DOW-PETERSON.
6. THE NEAREST EXISTING WELL: KATE WHITE D29-5, 375' NW.

IN ACCORDANCE WITH A REQUEST FROM MATT CAMPBELL WITH NOBLE ENERGY INC., R&R ENGINEERS-SURVEYORS, INC. HAS DETERMINED THE SURFACE HOLE LOCATION OF THE GUTTERSEN Y05-779 WELL TO BE 2206' FROM THE NORTH LINE AND 973' FROM THE WEST LINE AS MEASURED AT RIGHT ANGLES FROM THE SECTION LINES OF SECTION 29, TOWNSHIP 3 NORTH, RANGE 64 WEST, AND THE BOTTOM HOLE LOCATION TO BE 75' FROM THE SOUTH LINE AND 1326' FROM THE WEST LINE AS MEASURED AT RIGHT ANGLES FROM THE SECTION LINES OF SECTION 5, TOWNSHIP 2 NORTH, RANGE 64 WEST OF THE 6TH PRINCIPAL MERIDIAN, WELD COUNTY, COLORADO.

I HEREBY CERTIFY THAT THIS WELL LOCATION CERTIFICATE WAS PREPARED BY ME, OR UNDER MY DIRECT SUPERVISION, THAT THE FIELD WORK WAS COMPLETED ON 02/21/2018, FOR AND ON BEHALF OF NOBLE ENERGY INC., THAT IT IS NOT A LAND SURVEY PLAT OR AN IMPROVEMENT SURVEY PLAT, AND THAT IT IS NOT TO BE RELIED UPON FOR ESTABLISHMENT OF FENCES, BUILDINGS, OR OTHER FUTURE IMPROVEMENT LINES.

SURFACE HOLE LOCATION

LATITUDE: N 40.19743°
 LONGITUDE: W 104.58109°
 PDOP: 1.3
 ELEVATION: 4785'
 1/4-1/4: SW 1/4 NW 1/4

BOTTOM HOLE LOCATION

LATITUDE: N 40.16031°
 LONGITUDE: W 104.57992°

LEGEND

- ⊗ PROPOSED WELL
- ⊙ EXISTING WELL
- ⊕ BOTTOM HOLE
- ⊞ FOUND MONUMENT
- CALCULATED POSITION



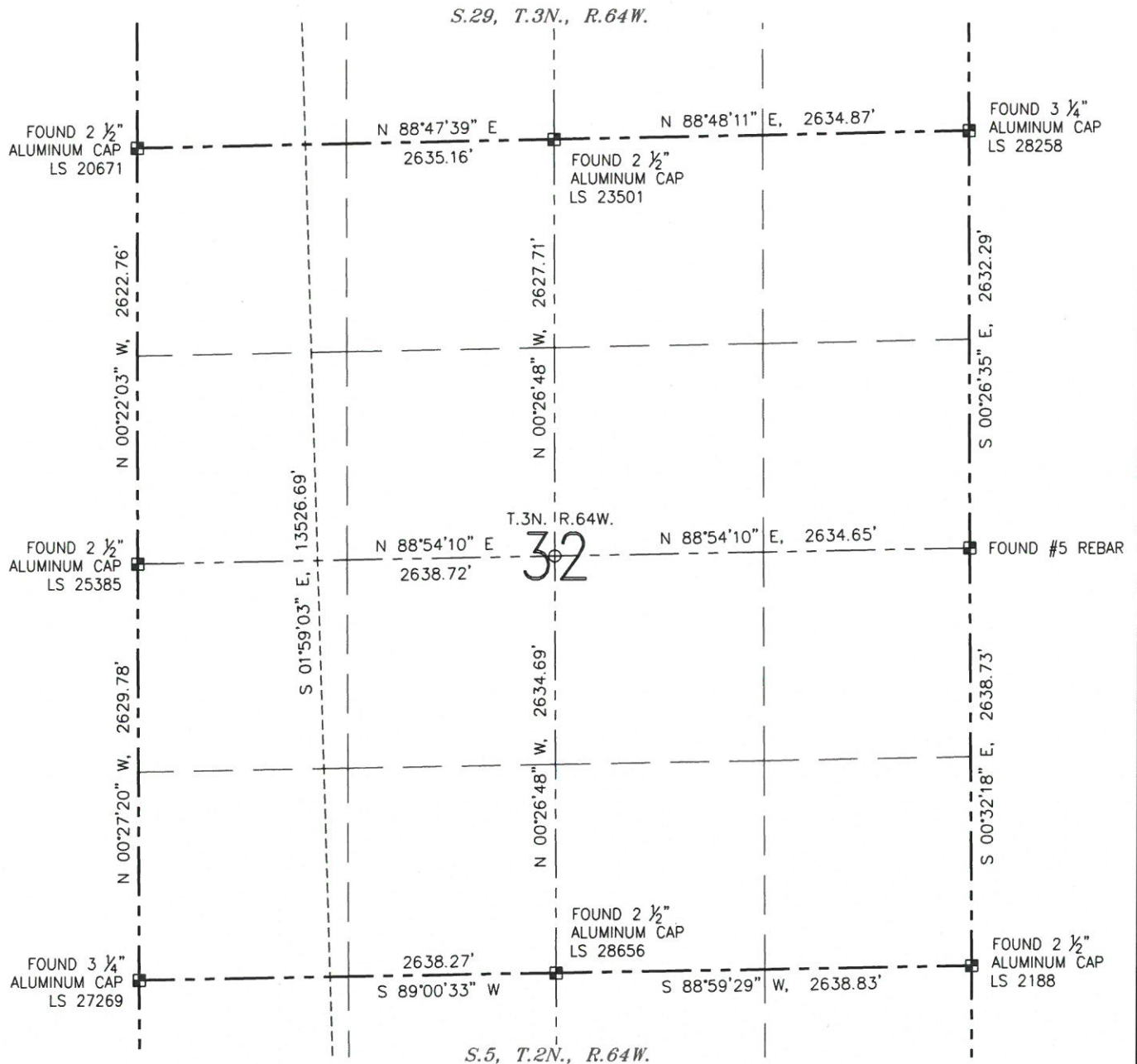
0 1000'
 SCALE: 1" = 1000'



STACY LYNN BALZER, PLS 38495
 FOR AND ON BEHALF OF R&R ENGINEERS-SURVEYORS, INC. DATE: 03/15/2018
 JOB #: NE17302

WELL LOCATION CERTIFICATE**GUTTERSEN Y05-779**

(SHEET 2 OF 3)

SECTION: 29
TOWNSHIP: 3N
RANGE: 64W**LEGEND**

- ⊗ PROPOSED WELL
- ⊙ EXISTING WELL
- ⊙ BOTTOM HOLE
- ⊠ FOUND MONUMENT
- CALCULATED POSITION



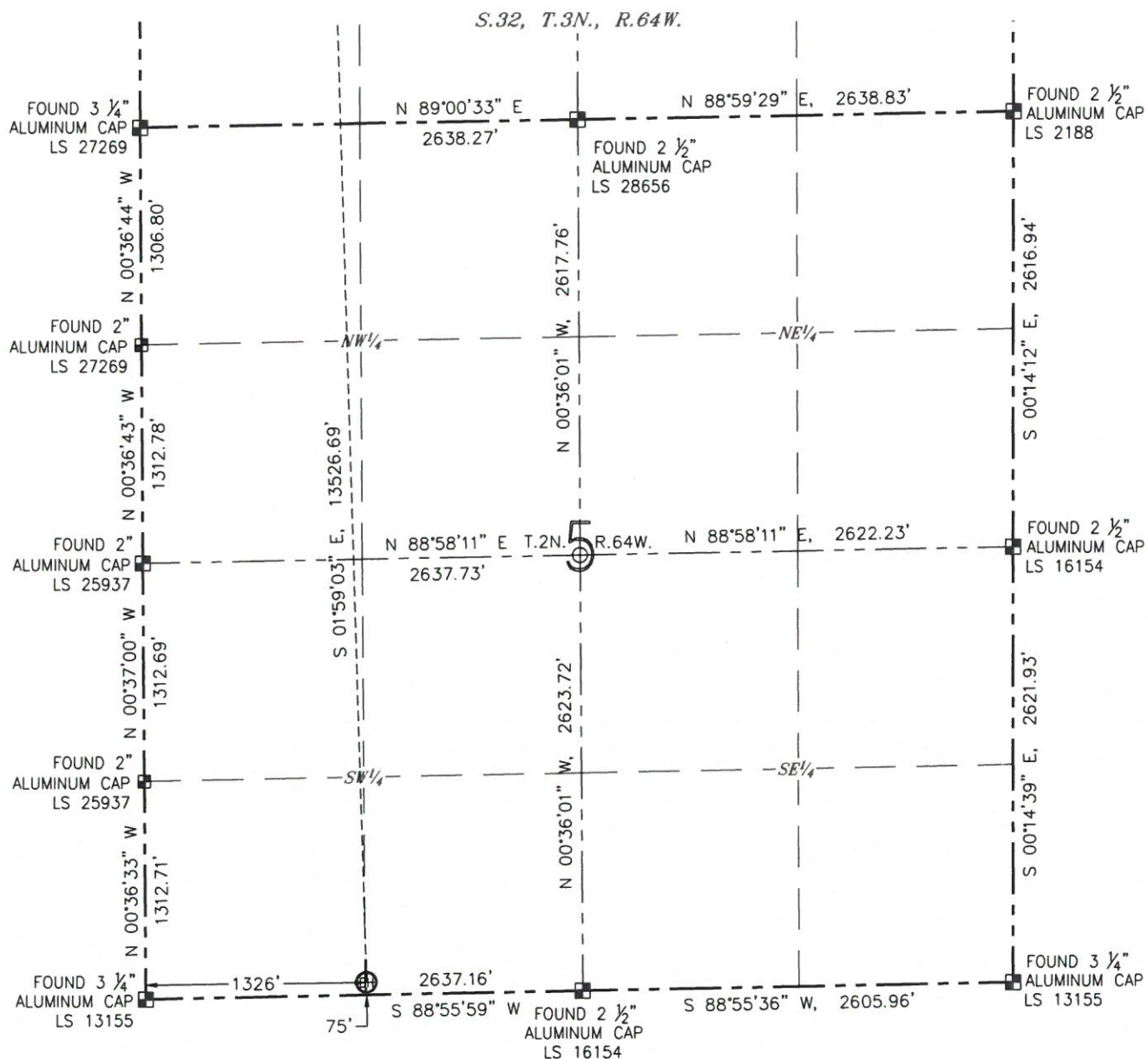
0 1000'

SCALE: 1" = 1000'

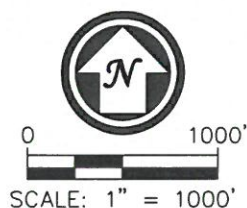
DATE: 03/15/2018
JOB #: NE17302

(SHEET 3 OF 3)

RANGE: 64W



⊗ PROPOSED WELL
 ⊙ EXISTING WELL
 ⊗ BOTTOM HOLE
 ■ FOUND MONUMENT
 ○ CALCULATED POSITION



DATE: 03/15/2018
JOB #: NE17302