





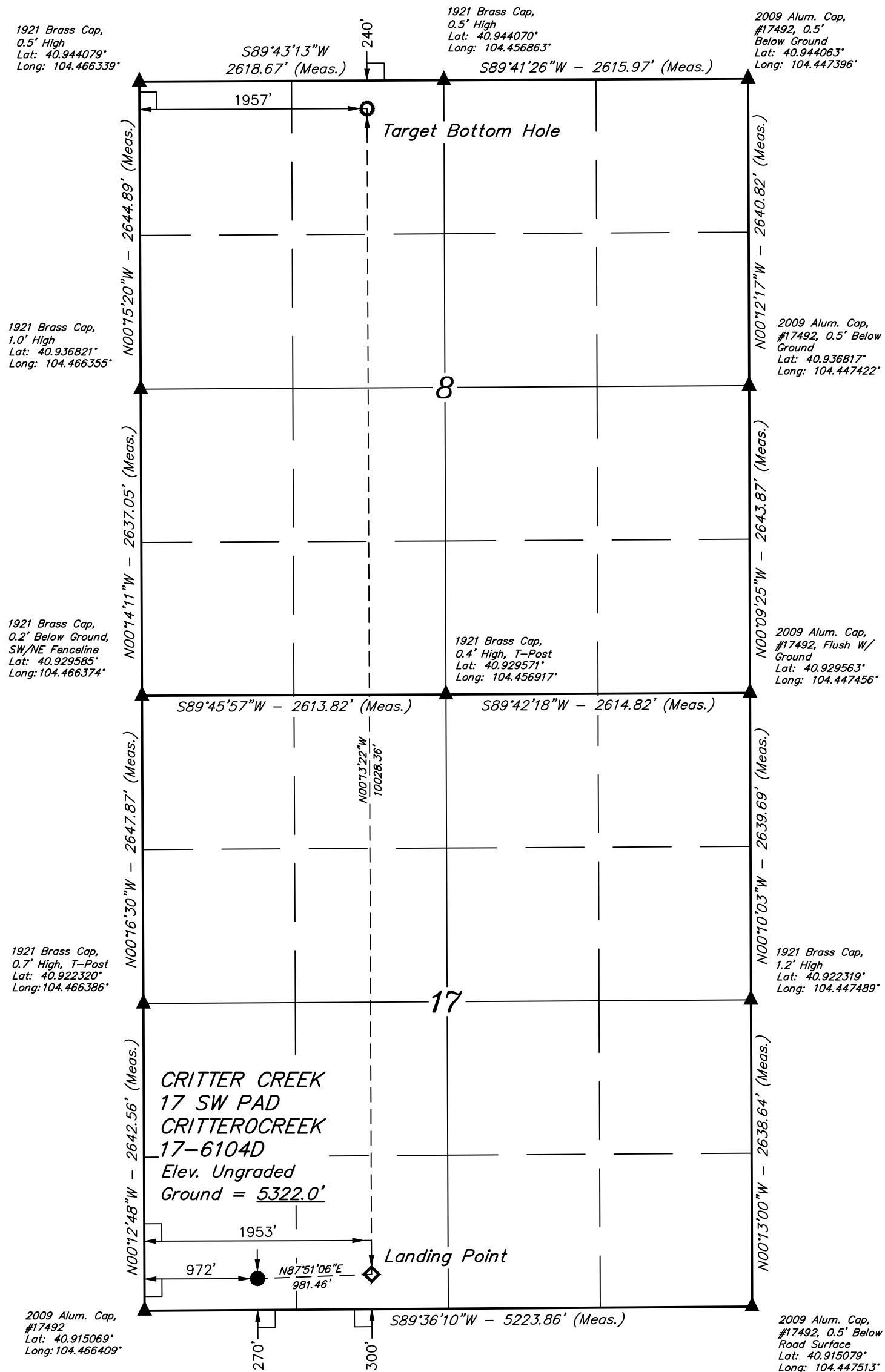


T11N, R63W, 6th P.M.

-  = 90° SYMBOL
 = PROPOSED WELLHEAD.
 = LANDING POINT
 = TARGET BOTTOM HOLE.
 = SECTION CORNERS LOCATED. (NAD 83)
 = SECTION CORNERS RE-ESTABLISHED.
 (Not Set on Ground.) (NAD 83)



NAD 83 (SURFACE HOLE LOCATION)	NAD 83 (LANDING POINT)	NAD 83 (TARGET BOTTOM HOLE)
LATITUDE = 40°54'56.92" (40.915812°)	LATITUDE = 40°54'57.23" (40.915896°)	LATITUDE = 40°56'36.29" (40.943413°)
LONGITUDE = 104°27'46.40" (104.462890°)	LONGITUDE = 104°27'33.63" (104.459342°)	LONGITUDE = 104°27'33.33" (104.459259°)
NAD 27 (SURFACE HOLE LOCATION)	NAD 27 (LANDING POINT)	NAD 27 (TARGET BOTTOM HOLE)
LATITUDE = 40°54'56.99" (40.915829°)	LATITUDE = 40°54'57.29" (40.915914°)	LATITUDE = 40°56'36.35" (40.943431°)
LONGITUDE = 104°27'44.56" (104.462377°)	LONGITUDE = 104°27'31.78" (104.458829°)	LONGITUDE = 104°27'31.48" (104.458745°)
STATE PLANE NAD 83 (CO. NORTH)	STATE PLANE NAD 83 (CO. NORTH)	STATE PLANE NAD 83 (CO. NORTH)
N: 1578158.43' E: 3286641.44'	N: 1578200.66' E: 3287621.77'	N: 1588226.29' E: 3287527.08'
STATE PLANE NAD 27 (CO. NORTH)	STATE PLANE NAD 27 (CO. NORTH)	STATE PLANE NAD 27 (CO. NORTH)
N: 578156.48' E: 2286790.91'	N: 578198.71' E: 2287771.23'	N: 588224.14' E: 2287676.59'

CERTIFICATE

THIS IS TO CERTIFY THAT THE ABOVE MAP WAS PREPARED FROM FIELD NOTES OF ACTUAL SURVEYS MADE BY ME OR UNDER MY SUPERVISION, AND THAT THE SAME ARE TRUE AND CORRECT TO THE BEST OF MY KNOWLEDGE AND BELIEF.



BASIS OF BEARINGS

TRANSVERSE MERCATOR PROJECTION WITH A CENTRAL MERIDIAN OF W105°00'00".

BASIS OF ELEVATION

OPUS SOLUTION GENERATED NAVD 88



UELS, LLC
Corporate Office * 85 South 200 East
Vernal, UT 84078 * (435) 789-1017



HIGHPOINT OPERATING CORPORATION

**CRITTER CREEK 17 SW PAD
CRITTER CREEK 17-6104D
SW 1/4 SW 1/4, SECTION 17, T11N, R63W, 6th P.M.
WELD COUNTY, COLORADO**

SURVEYED BY	JARED CHRISTOPHER, O.R.	04-18-18	SCALE
DRAWN BY	D.J.W.	04-23-18	1" = 1000'

WELL LOCATION PLAT