

WELL LOCATION DATA:

LATITUDE: 40.44326°N
LONGITUDE: -104.68558°W
ELEVATION: 4650'
PDOP: 1.329
OPERATOR: C.FISHER
SURFACE USE: CROP LAND



0 1000

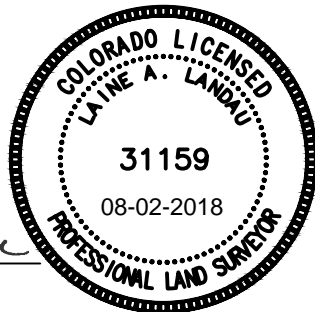
SCALE: 1"= 1000'
U.S. SURVEY FEET

LEGEND

- COMPUTED ALIQUOT CORNER
- ALIQUOT CORNER
- BOTTOM HOLE
- PROPOSED WELL
- A.C. ALUMINUM CAP
- R.B. RANGE BOX

LAND SURVEYOR'S CERTIFICATION

LAMP, RYNEARSON & ASSOCIATES, INC., OF FT. COLLINS, COLORADO HAS, IN ACCORDANCE WITH A REQUEST FROM TROY OWENS FOR EXTRACTION OIL AND GAS, DETERMINED THE SURFACE LOCATION OF THE WELL DESIGNATED AS WAKE EAST 33E-20-9N TO BE 2416' FROM THE SOUTH LINE AND 2171' FROM THE EAST LINE OF SECTION 32, TOWNSHIP 6 NORTH, RANGE 65 WEST OF THE 6TH P.M., WELD COUNTY, COLORADO.



Laine A. Landau

LAINE A. LANDAU
COLORADO PLS 31159
DATE OF SURVEY: 07/24/2018,
DATE OF SURVEY: 05/18/2016 (WELL LOCATION)



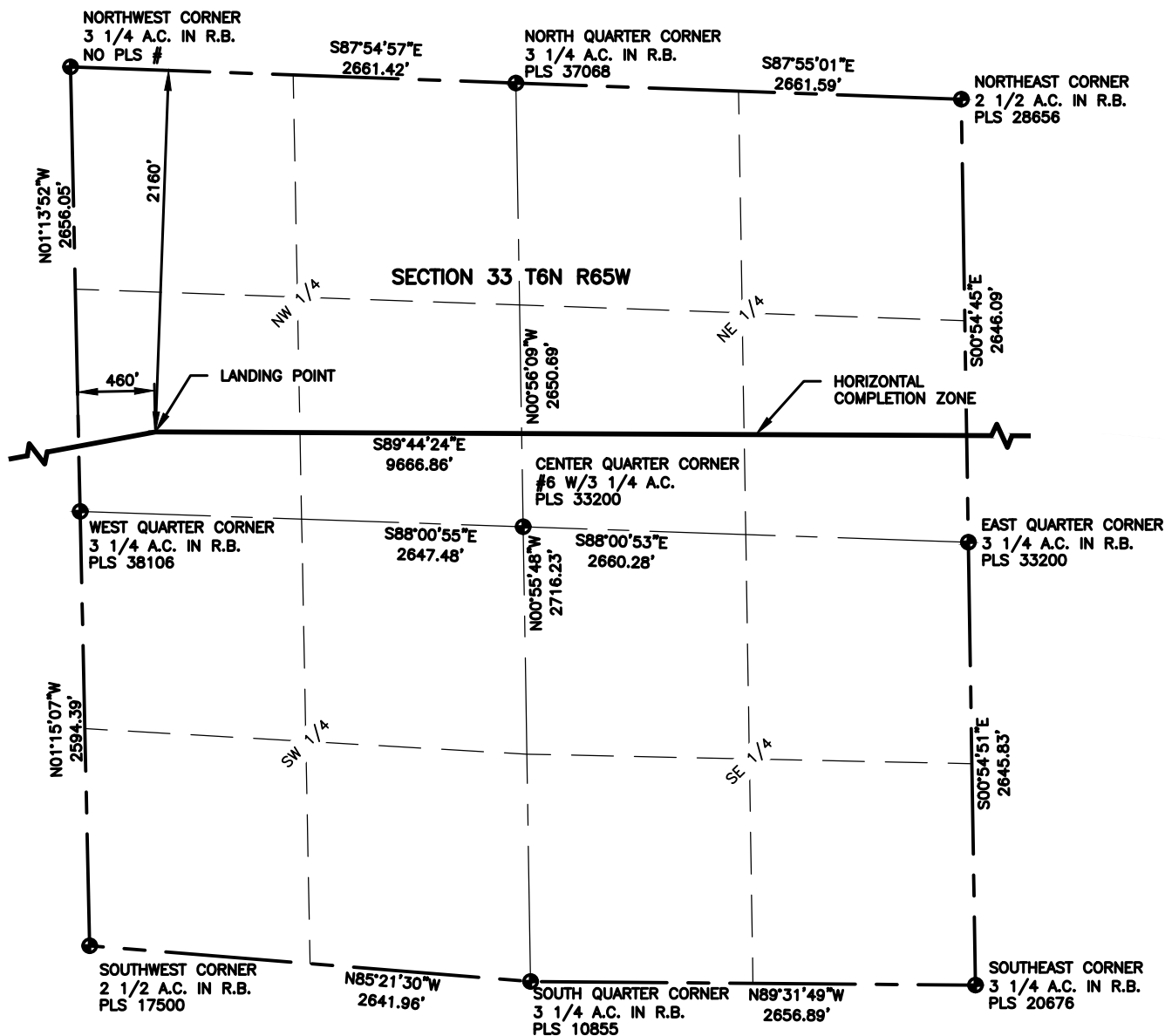
LAMP RYNEARSON
& ASSOCIATES

4715 Innovation Drive 970.226.0342 | P
Fort Collins, CO 80525 970.226.0879 | F
www.LRA-inc.com

PROPOSED WELL LOCATION EXHIBIT
WAKE EAST 33E-20-9N
1 OF 3

DRAWN BY	DATE	COGCC ID	PROJECT - TASK NUMBER	BOOK AND PAGE
BMA	8/2/18	0215045.02	0215045.01	MRI 4/25
PATH/FILENAME	I:\engineering\0215045.02 Extraction Wake East\SURVEY\DRAWINGS\EXHIBITS\0215045.02			

SURFACE - LOCATION
NW1/4, SE1/4, SEC 32, T6N,
R65W



LEGEND

- ◈ COMPUTED ALIQUOT CORNER
- ⊙ PROPOSED WELL
- ALIQUOT CORNER
- A.C. ALUMINUM CAP
- ⊖ BOTTOM HOLE
- R.B. RANGE BOX

NOTES:

- DISTANCES ARE MEASURED PERPENDICULAR TO NEAREST SECTION LINE AND ARE SHOWN ON THE SAME SIDE OF THE SECTION LINE WHERE THE WELL IS LOCATED.
- THIS MAP DOES NOT REPRESENT A MONUMENTED BOUNDARY SURVEY. SIXTEENTH CORNER LOCATIONS ARE COMPUTED, UNLESS OTHERWISE NOTED.
- BOTTOM HOLE LOCATIONS AND HORIZONTAL COMPLETION ZONE PROVIDED BY OTHERS.
- ALL REBAR AND CAPS ARE MEASURED IN INCHES.



0 1000

SCALE: 1" = 1000'
U.S. SURVEY FEET



LAMP RYNEARSON
& ASSOCIATES

4715 Innovation Drive 970.226.0342 | P
Fort Collins, CO 80525 970.226.0879 | F
www.LRA-inc.com

PROPOSED WELL LOCATION EXHIBIT
WAKE EAST 33E-20-9N
2 OF 3

DRAWN BY
BMA
PATH/FILENAME

DATE
8/2/18
I:\engineering\215045.02 Extraction Wake East\WDRP.dwg

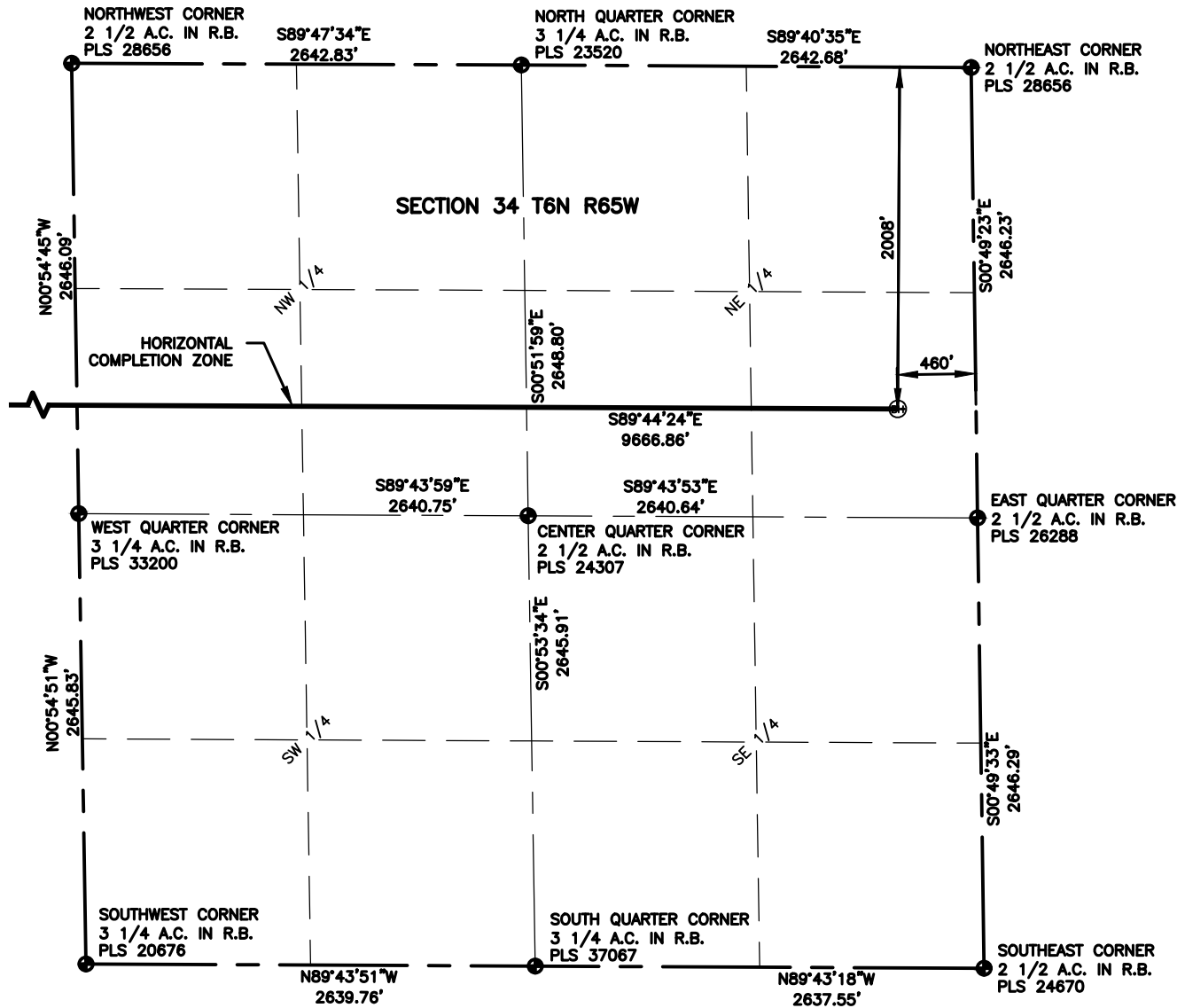
COGCC ID
0215045.02

PROJECT - TASK NUMBER
0215045.01

BOOK AND PAGE
MRI 4/25

0215045.02

SURFACE - LOCATION
NW1/4, SE1/4, SEC 32, T6N,
R65W

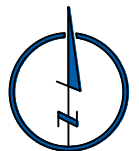


LEGEND

- ◈ COMPUTED ALIQUOT CORNER
- ⊙ PROPOSED WELL
- ⊙ ALIQUOT CORNER
- A.C. ALUMINUM CAP
- ⊙ BOTTOM HOLE
- R.B. RANGE BOX

NOTES:

- DISTANCES ARE MEASURED PERPENDICULAR TO NEAREST SECTION LINE AND ARE SHOWN ON THE SAME SIDE OF THE SECTION LINE WHERE THE WELL IS LOCATED.
- THIS MAP DOES NOT REPRESENT A MONUMENTED BOUNDARY SURVEY. SIXTEENTH CORNER LOCATIONS ARE COMPUTED, UNLESS OTHERWISE NOTED.
- BOTTOM HOLE LOCATIONS AND HORIZONTAL COMPLETION ZONE PROVIDED BY OTHERS.
- ALL REBAR AND CAPS ARE MEASURED IN INCHES.



0 1000

SCALE: 1" = 1000'
U.S. SURVEY FEET



LAMP RYNEARSON
& ASSOCIATES

4715 Innovation Drive 970.226.0342 | P
Fort Collins, CO 80525 970.226.0879 | F
www.LRA-inc.com

PROPOSED WELL LOCATION EXHIBIT
WAKE EAST 33E-20-9N
3 OF 3

DRAWN BY
BMA
PATH/FILENAME

DATE
8/2/18
I:\engineering\WPCOC.dwg

COGCC ID
0215045.02

PROJECT - TASK NUMBER
0215045.01

BOOK AND PAGE
MRI 4/25

0215045.02

SURFACE - LOCATION
NW1/4, SE1/4, SEC 32, T6N,
R65W