

CERTIFICATE OF SURVEY
for
Beaver Mesa Exploration Co.
Weld County, Colorado

RECEIVED

APR 22 1975

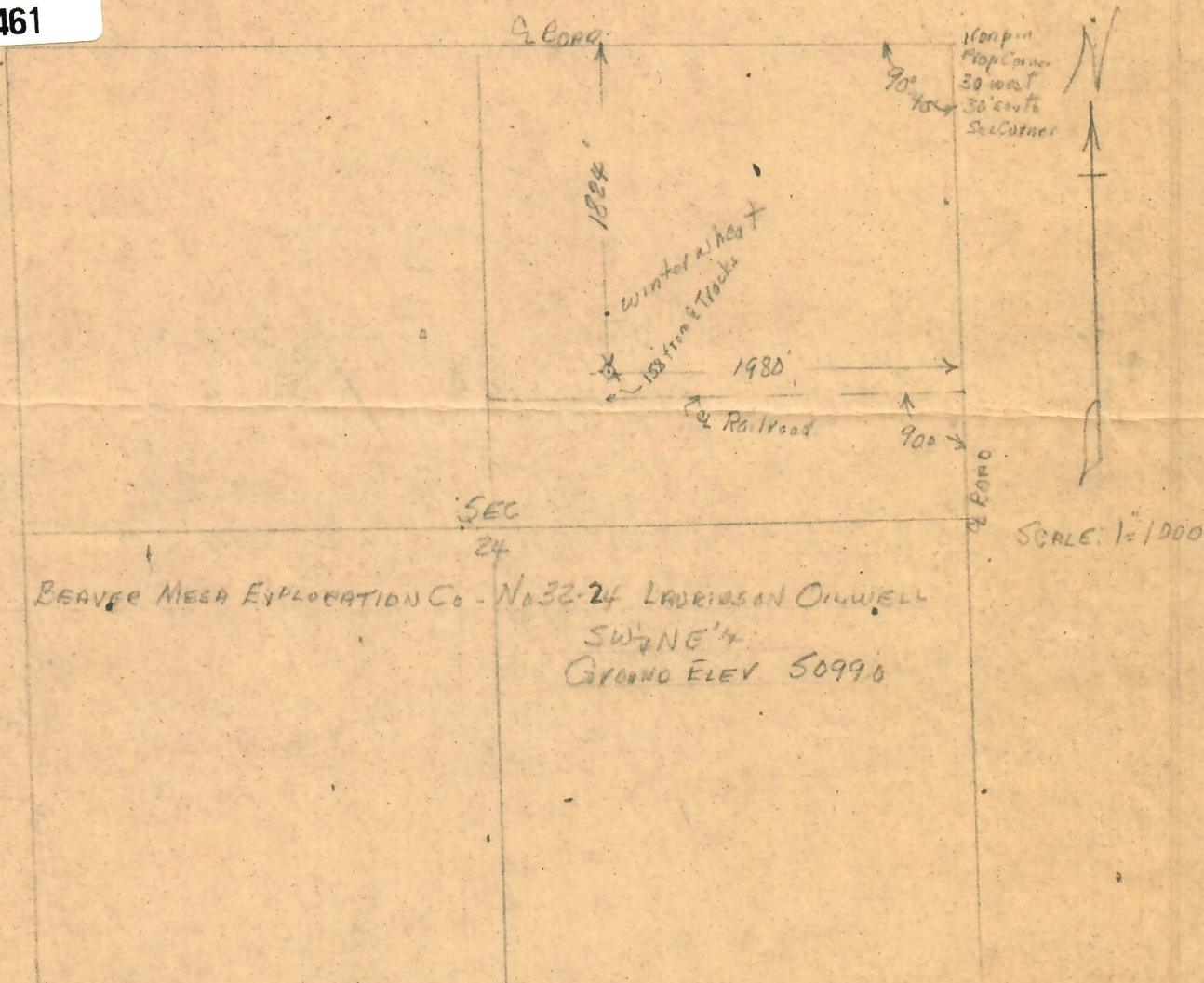
BEST COPY
AVAILABLE



00051461

T1N R68W 6PM

COLORADO GAS CONS. COMM.



I hereby certify that the above plat is an accurate representation of a correct survey showing the location of Beaver Mesa Exploration Co. - No 32-24 Lauridson Oilwell in SW 1/4 NE 1/4 Sec. 24 T1N R68W 6PM. The elevation of the ground at the stake is 5099.0 feet above sea level from U.S.G.S. Bench Mark.

Fort Morgan, Colorado
April 6, 1975

Leif. Osborne
Registered Professional Engineer
State of Colorado

file