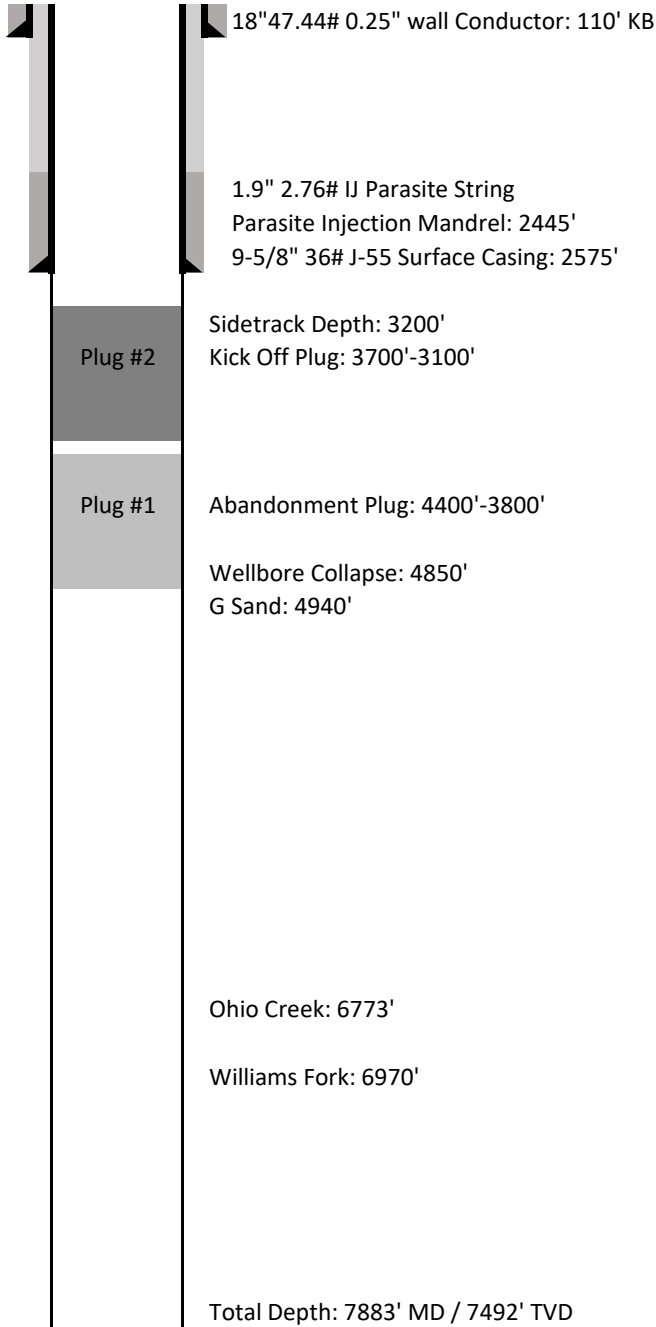


# Laramie Energy LLC

## Proposed Plugging Wellbore Schematic



|                        |                                    |
|------------------------|------------------------------------|
| <b>Well Name</b>       | <b>CC 0697-03-17E</b>              |
| <b>API No.</b>         | <b>05-045-23797-00</b>             |
| <b>Diagram Date</b>    | 8/8/2018                           |
| <b>Legal Location</b>  | Lot 11 Sec 3 TWP 6S RNG 97W 6th PM |
| <b>GPS Coordinates</b> | Lat 39.558215<br>Long -108.2051297 |
| <b>Field</b>           | Cascade Creek                      |
| <b>County</b>          | Garfield                           |
| <b>State</b>           | Colorado                           |
| <b>G.L. Elevation</b>  | 8428'                              |
| <b>K.B. Elevation</b>  | 8458'                              |

### Cementing Details

#### **Conductor Pipe**

18" 47.44# 0.250" wall set at 80'  
6yds of Concrete to surface

#### **Surface Casing**

9-5/8" 36# J-55 set at 2575'  
Lead: 1015sk of 12.3ppg lead  
VariCem GJ1  
2.372cf/sk  
Tail: 292sk of 12.5ppg tail  
VariCem GJ1  
2.107cf/sk  
115sx (25bbbls) of 15.6ppg Top Job Performed

#### **Plug #1 - Abandonment Plug**

4400'-3800': 340sx of Neat G 15.8ppg 1.15cf/sk

#### **Plug #1 - Kick Off Plug**

3700'-3100': 360sx of PlugCem 17ppg 0.99cf/sk

*All depths are referenced to KB  
Not to scale*