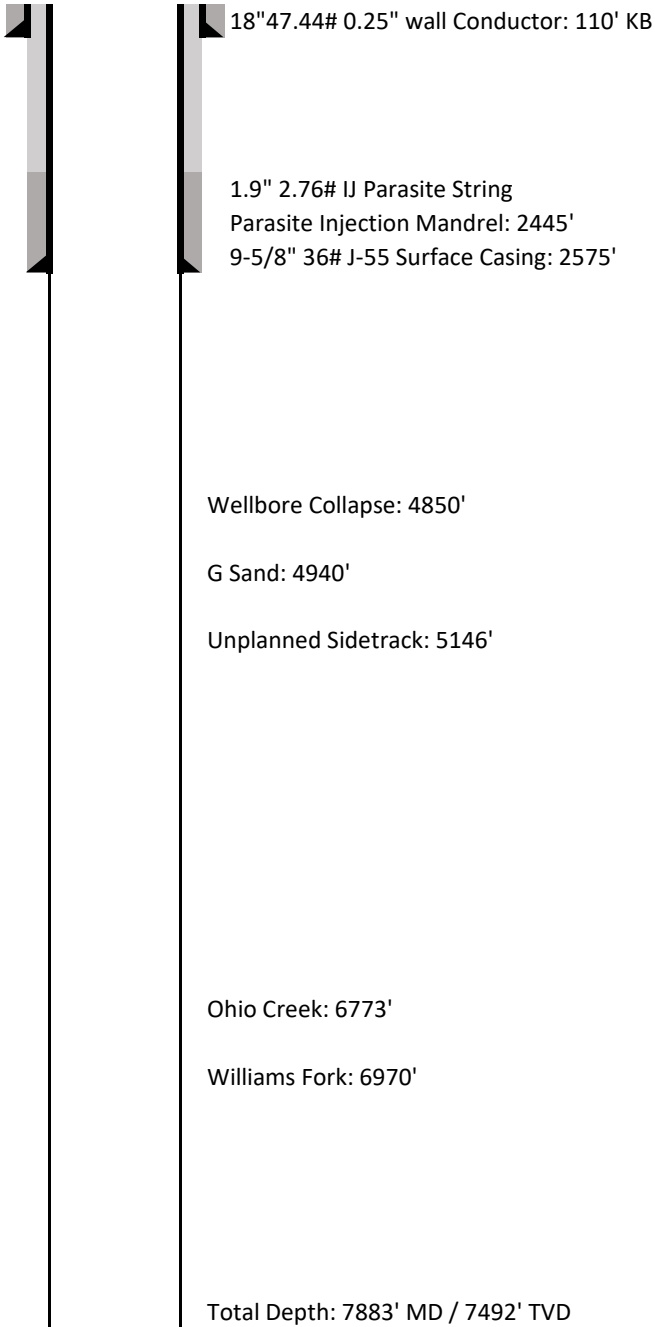


# Laramie Energy LLC

## Current Wellbore Schematic



<b>Well Name</b>	<b>CC 0697-03-17E</b>
<b>API No.</b>	<b>05-045-23797-00</b>
<b>Diagram Date</b>	8/8/2018
<b>Legal Location</b>	Lot 11 Sec 3 TWP 6S RNG 97W 6th PM
<b>GPS Coordinates</b>	Lat 39.558215 Long -108.2051297
<b>Field</b>	Cascade Creek
<b>County</b>	Garfield
<b>State</b>	Colorado
<b>G.L. Elevation</b>	8428'
<b>K.B. Elevation</b>	8458'

### Cementing Details

#### **Conductor Pipe**

18" 47.44# 0.250" wall set at 80'  
6yds of Concrete to surface

#### **Surface Casing**

9-5/8" 36# J-55 set at 2575'  
Lead: 1015sks of 12.3ppg lead  
VariCem GJ1  
2.372cf/sk  
Tail: 292sks of 12.5ppg tail  
VariCem GJ1  
2.107cf/sk  
115sx (25bbbls) of 15.6ppg Top Job Performed

#### **Fish**

No fish left in the hole

*All depths are referenced to KB  
Not to scale*