



07/02/2018

Colorado Oil and Gas Conservation Commission
1120 Lincoln Street, Suite 801
Denver, CO 80203

RE: Proposed Wellbore Spacing Unit
B-Farm LD 18-382HC
Codell New Drill
NENW Sec. 7, Township 1S, Range 67W
Adams County, Colorado

Dear Director Murphy,

Great Western Operating Company, LLC (Great Western) is planning to drill the above captioned well in accordance with the provisions of Colorado Oil and Gas Conservation Commission (COGCC) Rule 318A.e.

Great Western's proposed wellbore spacing unit consists of:

Township 1 South, Range 67 West (Adams County):
Section 7: W/2, W/2E/2
Section 18: W/2, W/2E/2
Section 19: N/2NW/4, NW/4NE/4

Total Acres: 1080 ac

The 30 day notification time period has passed and we have not yet received any objections to such well locations or proposed spacing unit, therefore Great Western hereby requests the Director to approve the above mentioned well. Great Western respectfully requests the COGCC review the enclosed map illustrating the proposed wellbore spacing unit.

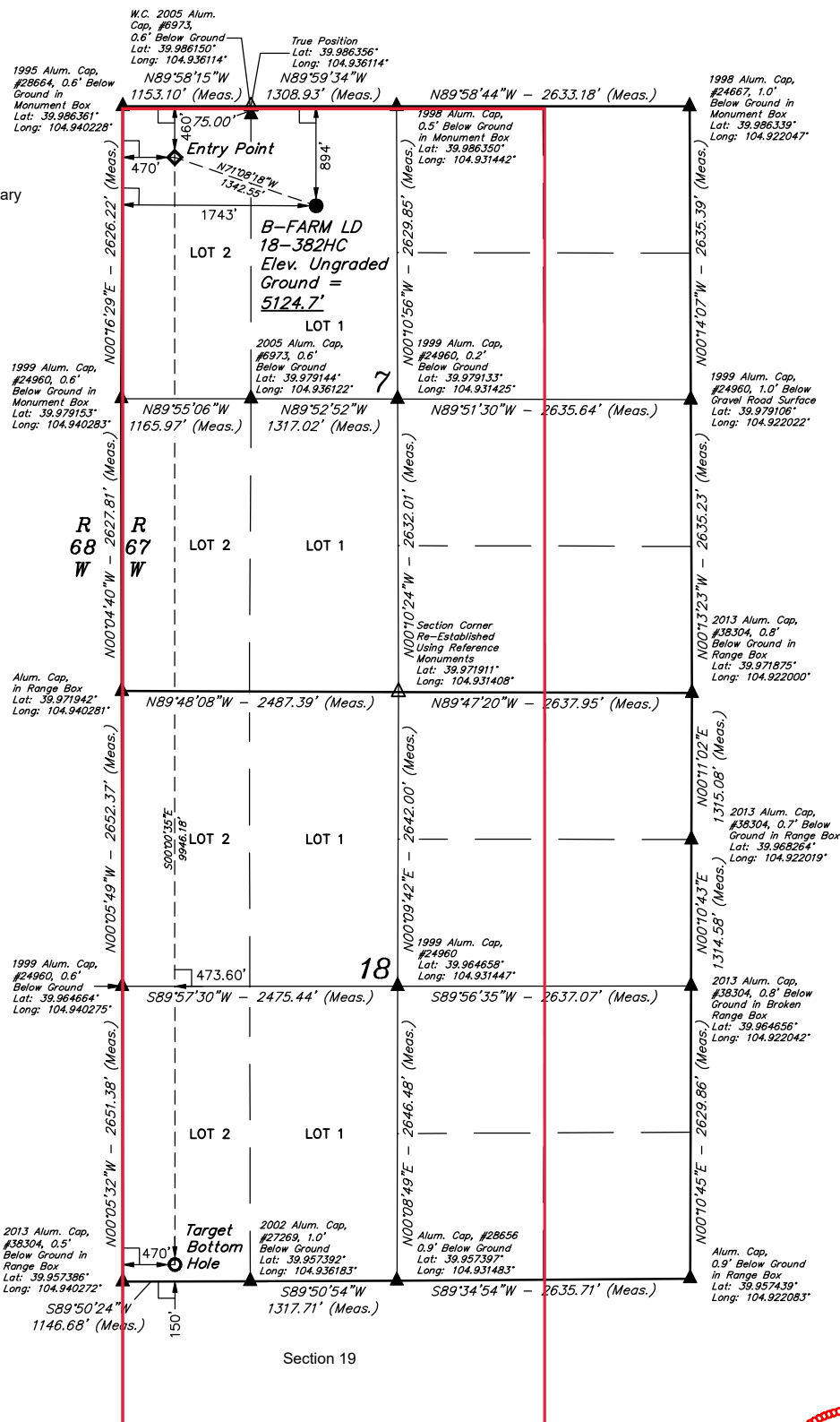
Respectfully,

Geoff Lee

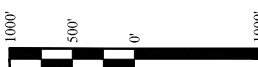
Geoff Lee
Regulatory Analyst
Great Western Operating Company, LLC

T1S, R67W, 6th P.M.

-
- PSU Boundary



PDOP = 1.8



NAD 83 (SURFACE LOCATION)	NAD 83 (ENTRY POINT)	NAD 83 (TARGET BOTTOM HOLE)
LATITUDE = 39°59'02.04" (94.983900)	LATITUDE = 39°59'06.35" (94.985097)	LATITUDE = 39°57'28.08" (94.957800)
LONGITUDE = 104°56'02.50" (104.934028)	LONGITUDE = 104°56'18.81" (104.938558)	LONGITUDE = 104°56'18.94" (104.938594)
NAD 27 (SURFACE LOCATION)	NAD 27 (ENTRY POINT)	NAD 27 (TARGET BOTTOM HOLE)
LATITUDE = 39°59'02.10" (94.983917)	LATITUDE = 39°59'06.40" (94.985111)	LATITUDE = 39°57'28.13" (94.957814)
LONGITUDE = 104°56'00.58" (104.933494)	LONGITUDE = 104°56'16.89" (104.938025)	LONGITUDE = 104°56'17.02" (104.938061)

BASIS OF BEARINGS

BASIS OF BEARINGS

BASIS OF BEARINGS IS A G.P.S. OBSERVATION

BASIS OF ELEVATION

USGS COOPERATIVE BASE NETWORK CONTROL STATION, DESIGNATION "JR 53 5026".
NGS DATA SHEET LISTS THE NAVD 88 ELEVATION AS BEING 5028 FEET.



UELS, LLC
Corporate Office * 85 South 200 East
Vernal, UT 84078 * (435) 789-1017



CERTIFICATE OF ADOPTION

THIS IS TO CERTIFY THAT THE ABOVE DRAWINGS PREPARED AND THE FIELD NOTES OF ACTUAL SURVEYS MADE THEREON UNDER MY SUPERVISION, AND THAT THE SAME ARE TRUE AND CORRECT TO THE BEST OF MY KNOWLEDGE AND BELIEF.



REGISTERED LAND SURVEYOR
REGISTRATION NO. 28285
STATE OF COLORADO

REV: 2 10-17-16 M.F.D. (SL, EP, TBH & NAME CHANGE)

GREAT WESTERN OPERATING COMPANY

B-FARM LD 18-382HC
NE 1/4 NW 1/4, SECTION 7, T1S, R67W, 6th P.M.
ADAMS COUNTY, COLORADO

SURVEYED BY	DALLAS NIELSEN, G.W.	03-24-16	SCALE
DRAWN BY	M.F.D.	03-31-16	1" = 1000'

WELL LOCATION PLAT