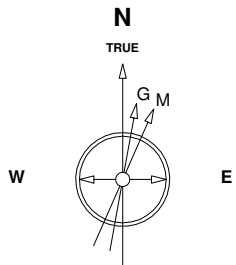


Great Western Operating Company, LLC

Location Colorado
Field Wattenburg
Installation B-Farm
Slot W-11 - B-Farm LD 18-384HC
Well B-Farm LD 18-384HC
Wellbore B-Farm LD 18-384HC (PWB)

Created by admin
Date plotted 28-Nov-2016

Plot reference is B-Farm LD 18-384HC (PWB).
Ref wellpath is B-Farm LD 18-384HC (PWP#1).
Coordinates are in Feet reference W-11 - B-Farm LD 18-384HC.
True Vertical Depths are reference Rig Datum.
Measured Depths are reference Rig Datum.
Rig Datum: Planned Datum #1
Rig Datum to Mean Sea Level: 20.00 ft.
Plot North is aligned to TRUE North.



Scale 1 cm = 300 ft

East (Feet) ->

-3600 -3000 -2400 -1800 -1200 -600 0 600 1200 1800 2400 3000 3600 4200

2400

TPZ - 8470 / 7939 MD/TVD, 460 FNL, 1043 FWL Sec 7

1600

Sec 7 T1S, R67W

800

Surface 0.00 N 0.00 E

0

-800

-1600

-2400

-3200

-4000

-4800

-5600

-6400

-7200

-8000

-8800

-9600

-10400

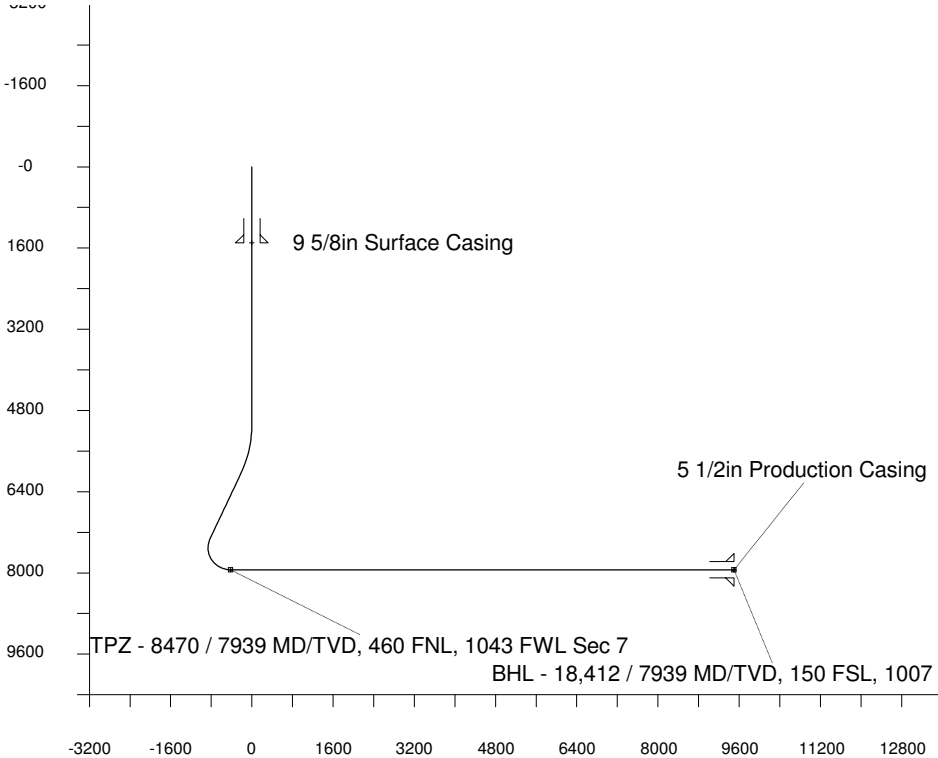
<- North(Feet)

Scale 1 cm = 400 ft

8-Sep-2016
IGRF Model [1900.0-2020.0] Dip: 66.51 deg Field: 52284.8 nT
Lat: N39 59 3.0300 Long: W104 56 2.5008 Elev: 0.00 ft
Magnetic North is 8.35 deg East of TRUE North
To correct azimuth from Magnetic to TRUE add 8.35 deg

<- True Vertical Depth (Feet)

Scale 1 cm



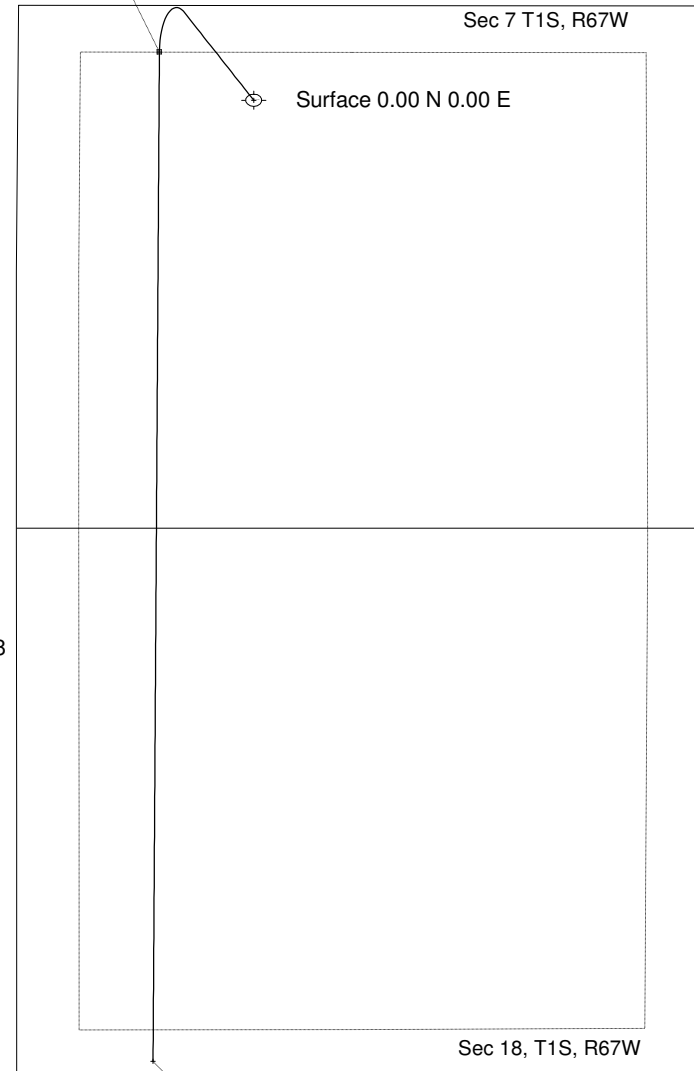
Vertical Section (Feet) ->

Scale 1 cm = 800 ft

Azimuth 184.49 with reference 0.00 N, 0.00 E from W-11 - B-Farm LD 18-384HC

WELL PROFILE DATA

Point	MD	Inc	Azi	TVD	North	East	deg/100ft	V. Sect
Tie on	0.00	0.00	0.00	0.00	S 0.00	W 0.00		-0.00
KOP	5070.50	0.00	329.37	5070.50	S 0.00	W 0.00	0.00	-0.00
End of Build	6070.53	30.00	329.37	6025.46	N 220.18	W 130.38	9.84	-209.29
End of Hold	7582.87	30.00	329.37	7335.17	N 870.84	W 515.69	0.00	-827.78
Target TPZ - ... Sec 7	8470.61	90.00	180.27	7939.00	N 473.58	W 696.64	42.65	-417.57
T.D. & Target BHL... 18	18411.70	90.00	180.27	7939.00	S 9467.40	W 743.73	0.00	9496.57



BHL - 18,412 / 7939 MD/TVD, 150 FSL, 1007 FWL Sec 18