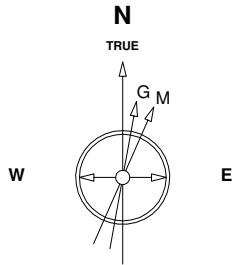


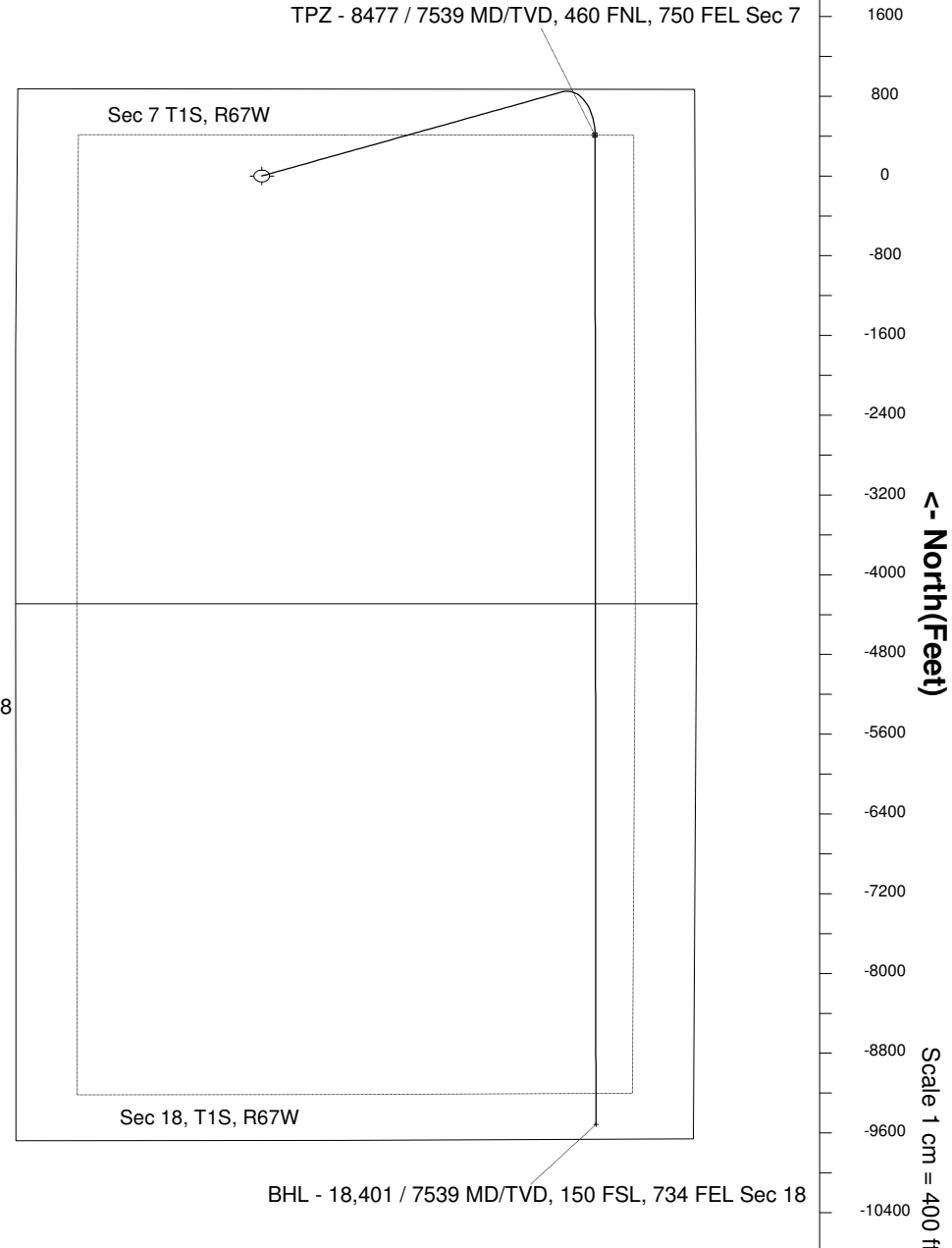
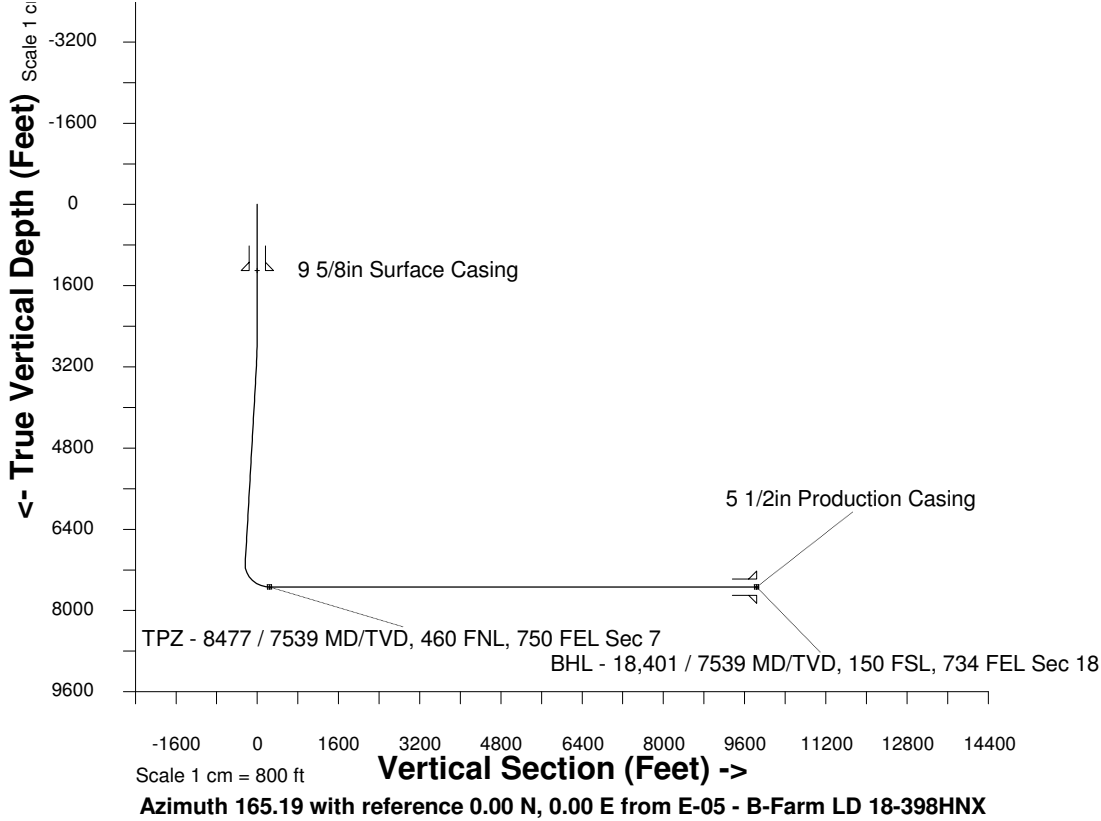
# Great Western Operating Company, LLC

**Location** Colorado  
**Field** Wattenburg  
**Installation** B-Farm  
**Slot** E-05 - B-Farm LD 18-398HNX  
**Well** B-Farm LD 18-398HNX  
**Wellbore** B-Farm LD 18-398HNX (PWB)

Created by admin  
Date plotted 10-Nov-2016  
Plot reference is B-Farm LD 18-398HNX (PWB).  
Ref wellpath is B-Farm LD 18-398HNX (PWP#1).  
Coordinates are in Feet reference E-05 - B-Farm LD 18-398HNX.  
True Vertical Depths are reference Rig Datum.  
Measured Depths are reference Rig Datum.  
Rig Datum: Planned Datum #1  
Rig Datum to Mean Sea Level: 20.00 ft.  
Plot North is aligned to TRUE North.



8-Sep-2016  
IGRF Model [1900.0-2020.0] Dip: 66.51 deg Field: 52284.8 nT  
Lat: N39 59 3.0300 Long: W104 56 2.5008 Elev: 0.00 ft  
Magnetic North is 8.35 deg East of TRUE North  
To correct azimuth from Magnetic to TRUE add 8.35 deg



## WELL PROFILE DATA

Point	MD	Inc	Azi	TVD	North	East	deg/100ft	V. Sect
Tie on	0.00	0.00	0.00	0.00	S 0.00	W 0.00		0.00
KOP	2390.00	0.00	69.55	2390.00	S 0.00	W 0.00	0.00	0.00
End of Build	3390.00	30.00	69.55	3344.93	N 89.42	E 239.74	9.84	-25.17
End of Hold	7707.22	30.00	69.55	7083.75	N 843.77	E 2262.25	0.00	-237.54
Target TPZ - ... Sec 7	8476.80	90.00	179.96	7539.00	N 409.95	E 2508.85	42.65	244.90
T.D. & Target BHL... 18	18400.67	90.00	179.96	7539.00	S 9513.91	E 2515.18	0.00	9840.77