



07/02/2018

Colorado Oil and Gas Conservation Commission  
1120 Lincoln Street, Suite 801  
Denver, CO 80203

**RE: Proposed Wellbore Spacing Unit**  
B-Farm LD 18-398HNX  
Niobrara New Drill  
NENW Sec. 7, Township 1S, Range 67W  
Adams County, Colorado

Dear Director Murphy,

Great Western Operating Company, LLC (Great Western) is planning to drill the above captioned well in accordance with the provisions of Colorado Oil and Gas Conservation Commission (COGCC) Rule 318A.e.

Great Western's proposed wellbore spacing unit consists of:

Township 1 South, Range 67 West (Adams County):  
Section 7: E/2  
Section 18: E/2  
Section 19: N/2NE/4

Total Acres: 720 ac

The 30 day notification time period has passed and we have not yet received any objections to such well locations or proposed spacing unit, therefore Great Western hereby requests the Director to approve the above mentioned well. Great Western respectfully requests the COGCC review the enclosed map illustrating the proposed wellbore spacing unit.

Respectfully,

*Geoff Lee*

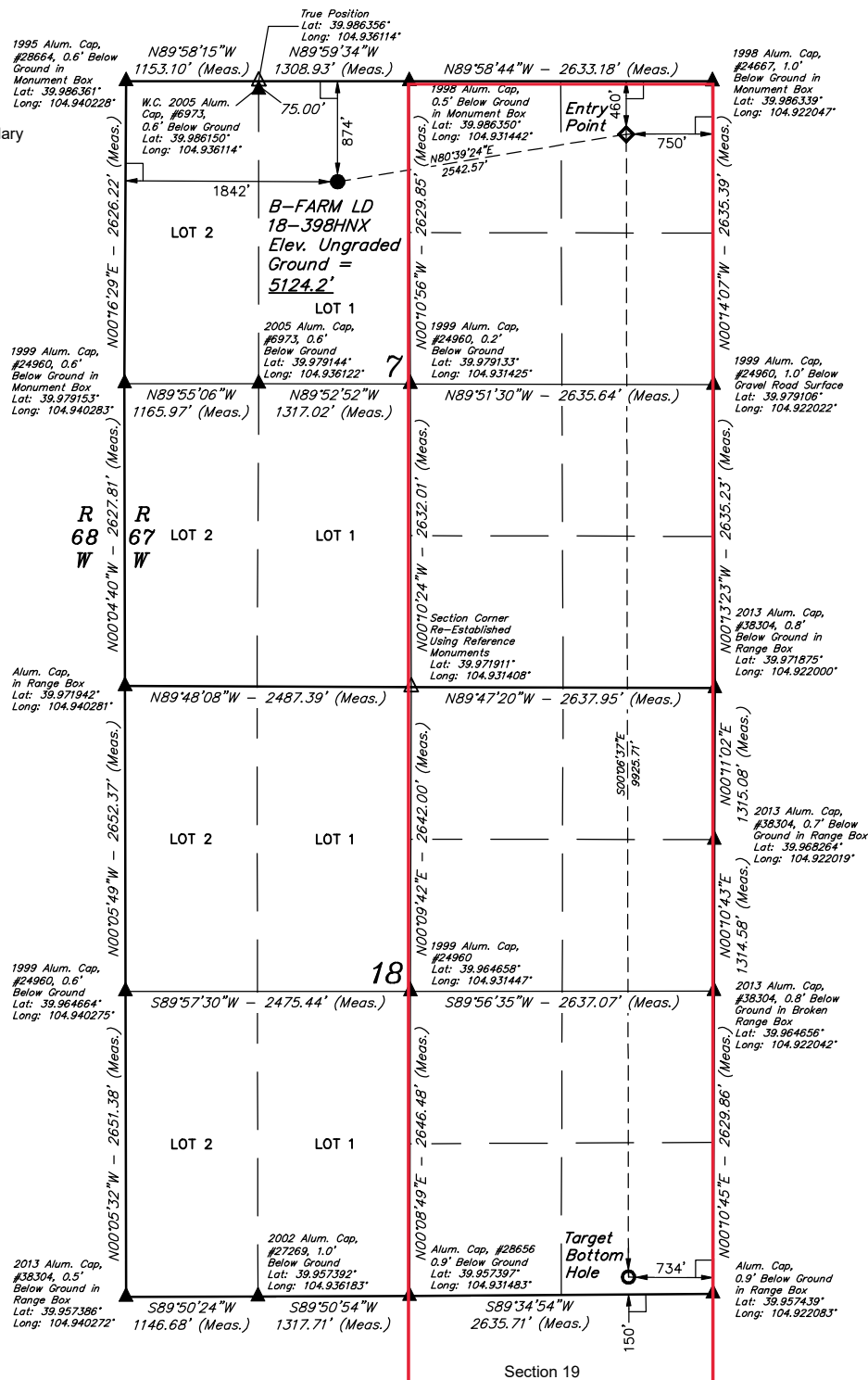
Geoff Lee  
Regulatory Analyst  
Great Western Operating Company, LLC

# LEGEND:

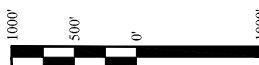
- 90° SYMBOL.
- PROPOSED WELL HEAD.
- TARGET BOTTOM HOLE.
- ENTRY POINT.
- SECTION CORNERS LOCATED. (NAD 83)
- SECTION CORNERS RE-ESTABLISHED. (Not Set on Ground.) (NAD 83)

PSU Boundary

T1S, R67W, 6th P.M.



PDOP = 1.5



NAD 83 (SURFACE LOCATION)	NAD 83 (ENTRY POINT)	NAD 83 (TARGET BOTTOM HOLE)
LATITUDE = 39°59'02.24" (39.983956)	LATITUDE = 39°59'06.29" (39.985081)	LATITUDE = 39°57'28.22" (39.957839)
LONGITUDE = 104°56'01.22" (104.933672)	LONGITUDE = 104°55'28.99" (104.924719)	LONGITUDE = 104°55'28.92" (104.924700)
NAD 27 (SURFACE LOCATION)	NAD 27 (ENTRY POINT)	NAD 27 (TARGET BOTTOM HOLE)
LATITUDE = 39°59'02.30" (39.983972)	LATITUDE = 39°59'06.34" (39.985094)	LATITUDE = 39°57'28.28" (39.957856)
LONGITUDE = 104°55'59.30" (104.933139)	LONGITUDE = 104°55'27.07" (104.924186)	LONGITUDE = 104°55'27.00" (104.924167)

**BASIS OF BEARINGS**  
BASIS OF BEARINGS IS A G.P.S. OBSERVATION

**BASIS OF ELEVATION**  
USGS COOPERATIVE BASE NETWORK CONTROL STATION, DESIGNATION "JR 53 5026"  
NGS DATA SHEET LISTS THE NAVD 88 ELEVATION AS BEING 5028 FEET.



**UELS, LLC**  
Corporate Office \* 85 South 200 East  
Vernal, UT 84078 \* (435) 789-1017

CERTIFICATE OF RECORDATION  
THIS IS TO CERTIFY THAT THE ABOVE DESCRIBED PROPERTY HAS BEEN RECORDED IN THE PUBLIC RECORDS OF THE STATE OF COLORADO UNDER MY SUPERVISION AND THAT THE SAME ARE TRUE AND CORRECT TO THE BEST OF MY KNOWLEDGE AND BELIEF.



REV: 2 10-17-16 M.F.D. (SL, EP, TBH & NAME CHANGE)

**GREAT WESTERN OPERATING COMPANY**

**B-FARM LD 18-398HXX**  
NE 1/4 NW 1/4, SECTION 7, T1S, R67W, 6th P.M.  
ADAMS COUNTY, COLORADO

SURVEYED BY	DALLAS NIELSEN, G.W.	03-24-16	SCALE
DRAWN BY	M.F.D.	03-31-16	1" = 1000'

**WELL LOCATION PLAT**