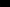




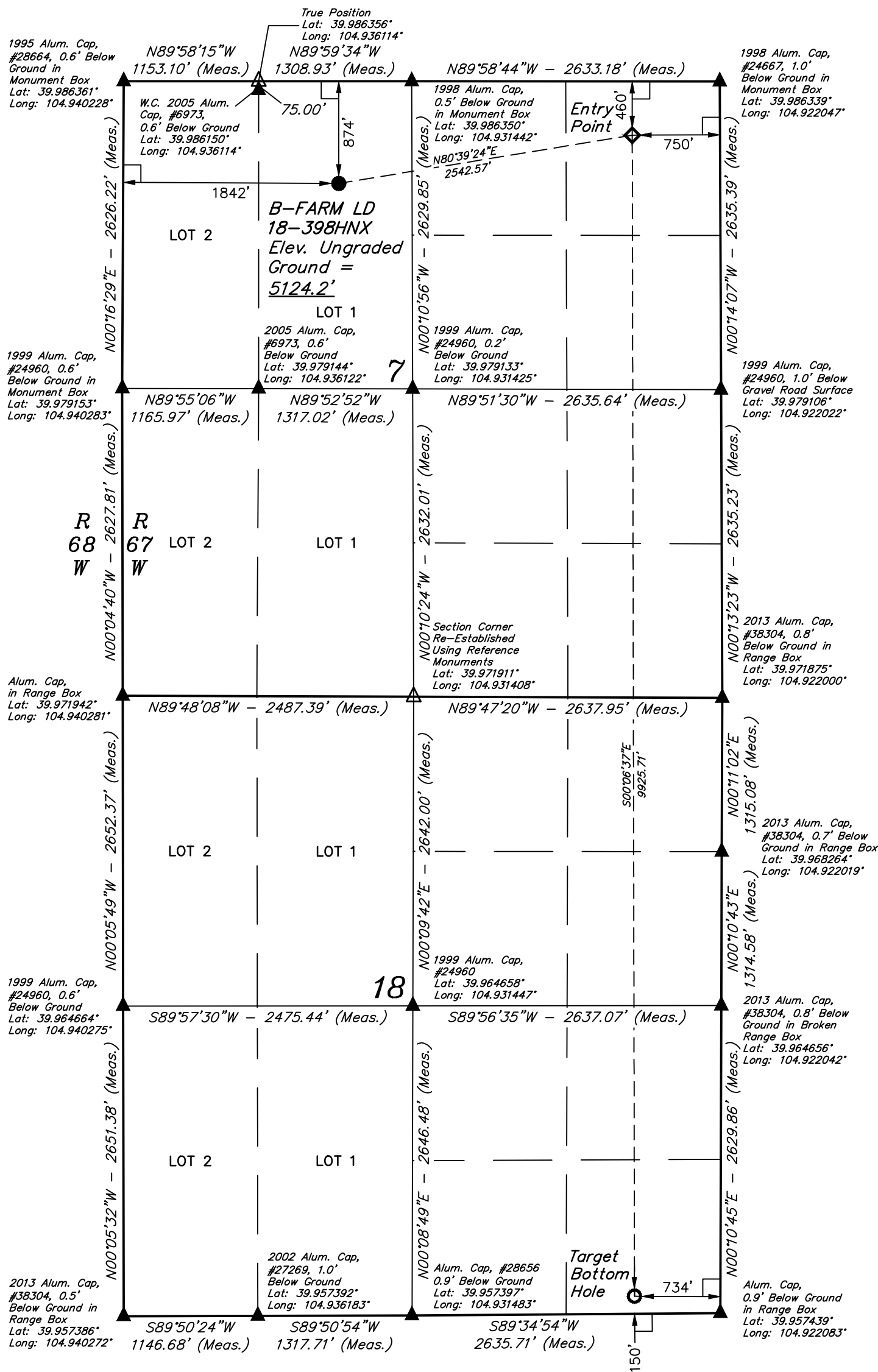


T1S, R67W, 6th P.M.

 = PROPOSED WELLHEAD.
 = TARGET BOTTOM HOLE.
 = ENTRY POINT.
 = SECTION CORNERS
LOCATED. (NAD 83)
 = SECTION CORNERS
RE-ESTABLISHED.
(Not Set on Ground.)
(NAD 83)



A horizontal scale bar with alternating black and white segments. The segments are labeled from left to right: 1000', 500', 0', 500', 1000'.

NAD 83 (SURFACE LOCATION)	NAD 83 (ENTRY POINT)	NAD 83 (TARGET BOTTOM HOLE)
LATITUDE = 39°59'02.24" (39.983956)	LATITUDE = 39°59'06.29" (39.985081)	LATITUDE = 39°57'28.22" (39.957839)
LONGITUDE = 104°56'01.22" (104.933672)	LONGITUDE = 104°55'28.99" (104.924719)	LONGITUDE = 104°55'28.92" (104.924700)
NAD 27 (SURFACE LOCATION)	NAD 27 (ENTRY POINT)	NAD 27 (TARGET BOTTOM HOLE)
LATITUDE = 39°59'02.30" (39.983972)	LATITUDE = 39°59'06.34" (39.985094)	LATITUDE = 39°57'28.28" (39.957856)
LONGITUDE = 104°55'59.30" (104.933139)	LONGITUDE = 104°55'27.07" (104.924186)	LONGITUDE = 104°55'27.00" (104.924167)

USGS COOPERATIVE BASE NETWORK CONTROL STATION, DESIGNATION "JR 53 5026".
NGS DATA SHEET LISTS THE NAVD 88 ELEVATION AS BEING 5028 FEET.



UELS, LLC
Corporate Office * 85 South 200 East
Vernal, UT 84078 * (435) 789-1017



THIS IS TO CERTIFY THAT THE ABOVE THAT WAS PREPARED FROM FIELD NOTES OF ACTUAL SURVEYS MADE BY ME OR UNDER MY SUPERVISION AND THAT THE SAME ARE TRUE AND CORRECT TO THE BEST OF MY KNOWLEDGE AND BELIEF.



REGISTERED LAND SURVEYOR
REGISTRATION NO. 28285
STATE OF COLORADO

REV: 2 10-17-16 M.F.D. (SL, EP, TBH & NAME CHANGE)

GREAT WESTERN OPERATING COMPANY

**B-FARM LD 18-398HNX
NE 1/4 NW 1/4, SECTION 7, T1S, R67W, 6th P.M.
ADAMS COUNTY, COLORADO**

SURVEYED BY	DALLAS NIELSEN, G.W.	03-24-16	SCALE
DRAWN BY	M.F.D.	03-31-16	1" = 1000'

WELL LOCATION PLAT