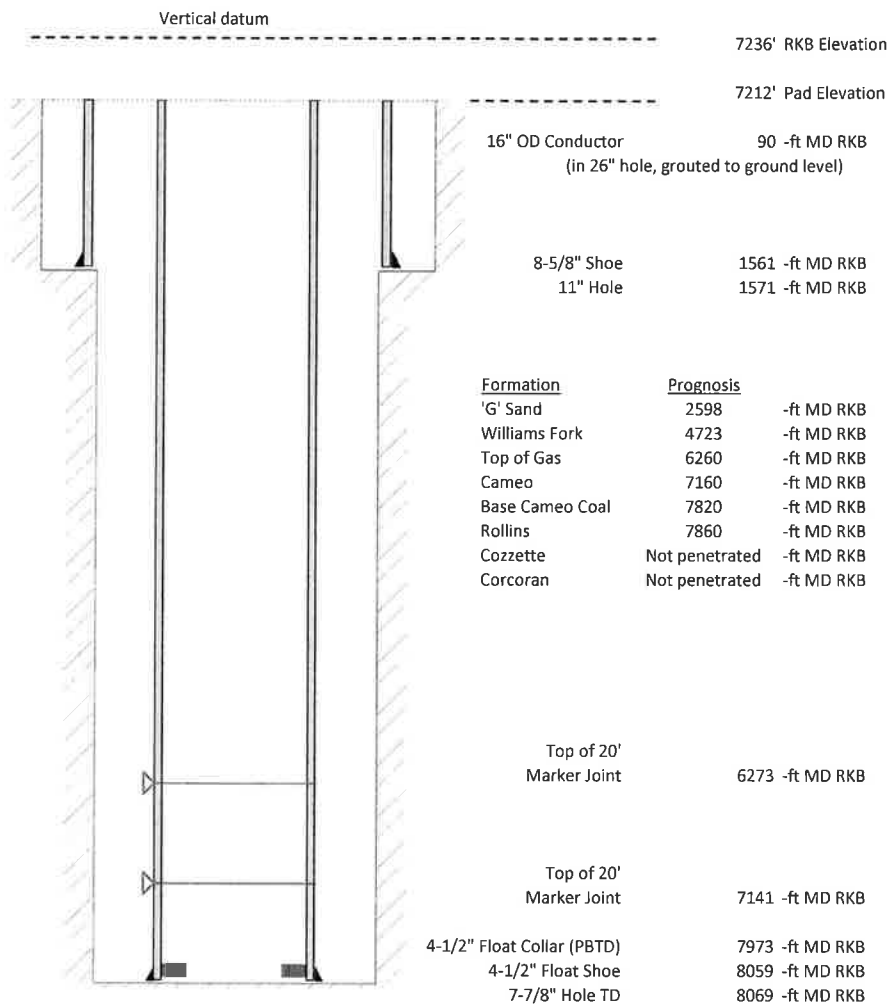


Laramie Energy, LLC
Nichols 0994-24-21W
Slot B-11
H&P 290 (24-ft KB)

API # : 05-077-10399-00
 SENW S24 T9S R94W 6th PM
 Mesa County, CO

Date of diagram :



Cementing details

8-5/8" 28# Surface Csg	Lead	Tail
Density (ppg)	12	12.5
Volume (sx)	192	107
Yield (cf/sx)	2.52	2.22
Top (ft RKB)	24	1030
Bottom (ft RKB)	1030	1561
Returns (full or partial)	Full	Full

4-1/2" 11.6# Prod Csg	Lead	Tail
Density (ppg)	12.7	13.5
Volume (sx)	741	322
Yield (cf/sx)	1.97	1.9
Est Top (ft RKB)	2594	5463
Est Bottom (ft RKB)	5463	8059
Returns (full or partial)	Full	Full

Displacement
8.3 ppg
123 bbls

Other Remarks : Surface- 15 bbls cement to surface
 Partial returns at 98 bbls away in displacement

Production-