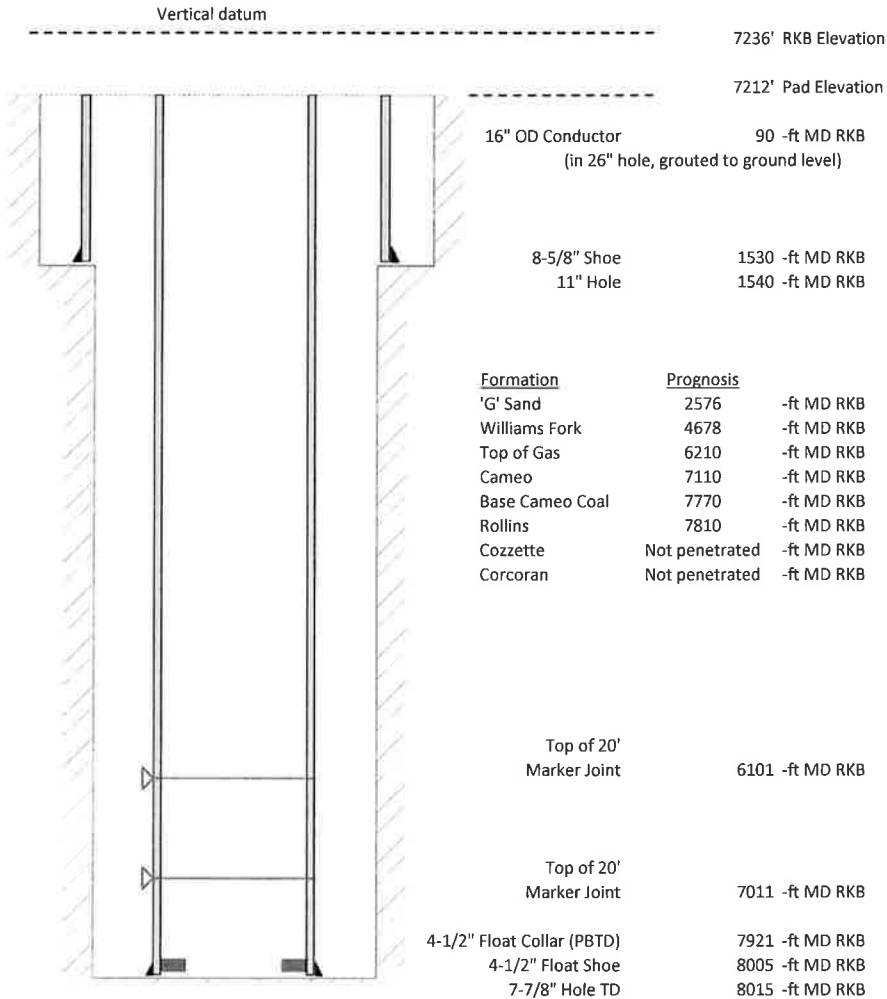


Laramie Energy, LLC
Nichols 0994-24-20W
Slot B-10
H&P 290 (24-ft KB)

API # : 05-077-10401-00
SENW S24 T9S R94W 6th PM
Mesa County, CO

Date of diagram :



Cementing details

8-5/8" 28# Surface Csg	Lead	Tail
Density (ppg)	12	12.5
Volume (sx)	154	87
Yield (cf/sx)	2.52	2.22
Top (ft RKB)	24	1030
Bottom (ft RKB)	1030	1530
Returns (full or partial)	Full	Full

4-1/2" 11.6# Prod Csg	Lead	Tail
Density (ppg)	12.7	13.5
Volume (sx)	784	346
Yield (cf/sx)	1.97	1.9
Est Top (ft RKB)	24	5226
Est Bottom (ft RKB)	5226	8005
Returns (full or partial)	Full	Full

Displacement
8.3 ppg
122 bbls

Other Remarks : Surface- 20 bbls cement to surface Production- 60
bbls spacer & 20 bbls of cement to surface