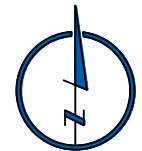


WELL LOCATION DATA:

LATITUDE: 40.44322°N
 LONGITUDE: -104.68558°W
 ELEVATION: 4650'
 PDOP: 1.626
 OPERATOR: C.FISHER
 SURFACE USE: CROP LAND



0 1000'

SCALE: 1" = 1000'
 U.S. SURVEY FEET

LEGEND

- ◆ COMPUTED ALIQUOT CORNER
- ⊙ PROPOSED WELL
- ⊕ ALIQUOT CORNER
- ⊕ A.C. ALUMINUM CAP
- ⊕ BOTTOM HOLE
- ⊕ R.B. RANGE BOX

NOTES:

- DISTANCES ARE MEASURED PERPENDICULAR TO NEAREST SECTION LINE AND ARE SHOWN ON THE SAME SIDE OF THE SECTION LINE WHERE THE WELL IS LOCATED.
- THIS MAP DOES NOT REPRESENT A MONUMENTED BOUNDARY SURVEY. SIXTEENTH CORNER LOCATIONS ARE COMPUTED, UNLESS OTHERWISE NOTED.
- BOTTOM HOLE LOCATIONS AND HORIZONTAL COMPLETION ZONE PROVIDED BY OTHERS.
- ALL REBAR AND CAPS ARE MEASURED IN INCHES.

BASIS OF BEARING:

THE SOUTH LINE OF THE SOUTHEAST QUARTER OF SECTION 32-T6N-R65W BEARS N85°52'57"W BETWEEN THE SOUTHEAST CORNER OF SECTION 32 MONUMENTED WITH A 2 1/2" A.C. IN R.B. STAMPED "LS 17500" AND THE SOUTH QUARTER CORNER OF SECTION 32 MONUMENTED WITH 3 1/4" A.C. IN R.B. STAMPED "PLS 28259" BASED ON THE COLORADO NORTH 0501 STATE PLANE COORDINATE SYSTEM.

ELEVATIONS ARE BASED ON NAVD 88, AS OBSERVED FROM GPS OBSERVATIONS



Laine A. Landau

LAINE A. LANDAU
 COLORADO PLS 31159
 DATE OF SURVEY: 07/25/2018,
 DATE OF SURVEY: 05/18/2016 (WELL LOCATION)



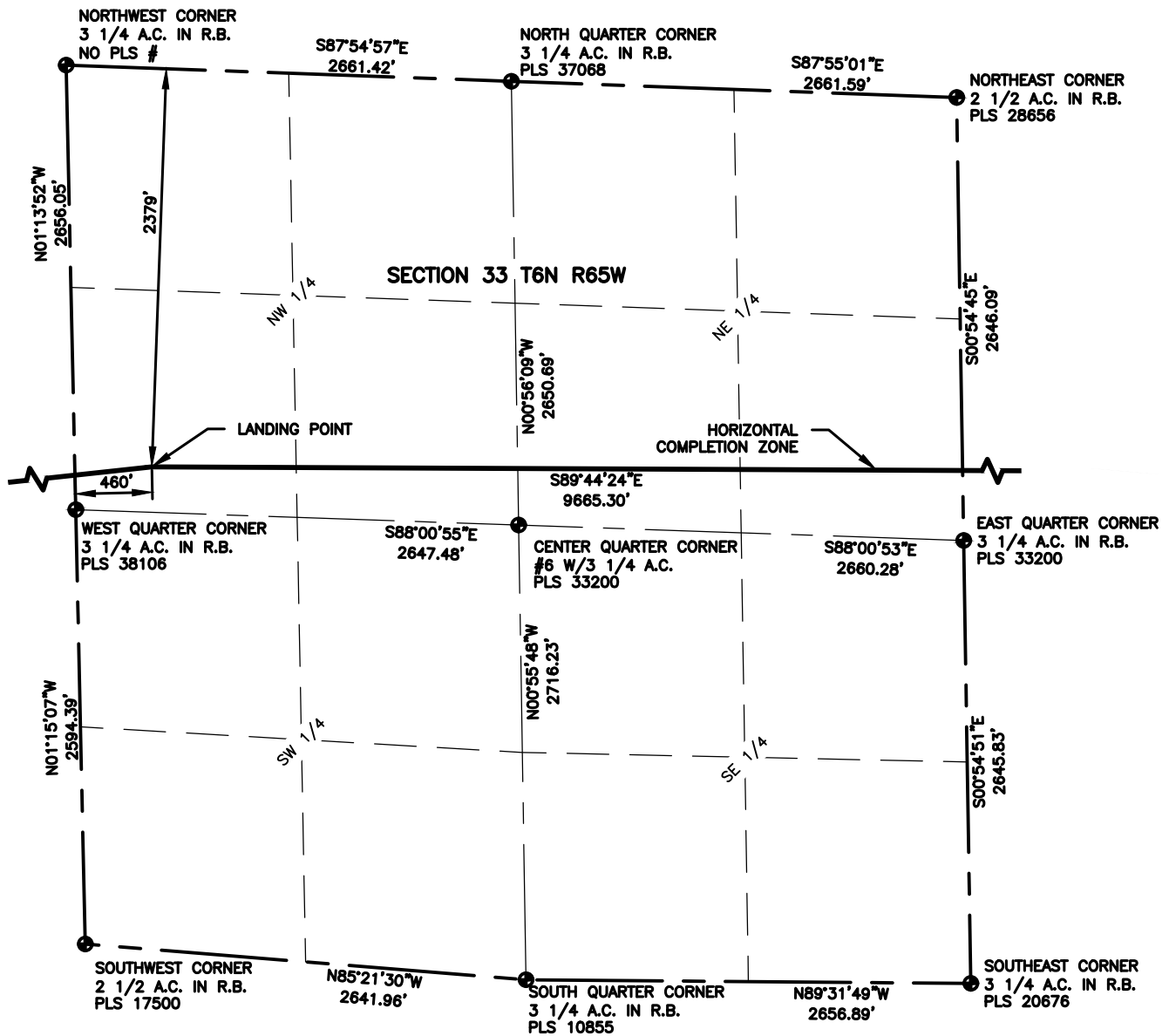
LAMP RYNEARSON
 & ASSOCIATES

4715 Innovation Drive 970.226.0342 | P
 Fort Collins, CO 80525 970.226.0879 | F
 www.LRA-inc.com

PROPOSED WELL LOCATION EXHIBIT
 WAKE EAST 33E-20-10N
 1 OF 3

DRAWN BY	DATE	COGCC ID	PROJECT - TASK NUMBER	BOOK AND PAGE
BMA	8/2/18	0215045.02	0215045.01	MRI 4/25
PATH/FILENAME	I:\engineering\0215045.02 Extraction Wake East\SURVEY\DRAWINGS\EXHIBITS\0215045.02			

SURFACE - LOCATION
 NW1/4, SE1/4, SEC 32, T6N,
 R65W

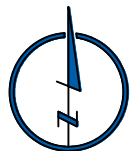


LEGEND

- ◈ COMPUTED ALIQUOT CORNER
- ⊙ PROPOSED WELL
- ⊙ ALIQUOT CORNER
- A.C. ALUMINUM CAP
- ⊙ BOTTOM HOLE
- R.B. RANGE BOX

NOTES:

- DISTANCES ARE MEASURED PERPENDICULAR TO NEAREST SECTION LINE AND ARE SHOWN ON THE SAME SIDE OF THE SECTION LINE WHERE THE WELL IS LOCATED.
- THIS MAP DOES NOT REPRESENT A MONUMENTED BOUNDARY SURVEY. SIXTEENTH CORNER LOCATIONS ARE COMPUTED, UNLESS OTHERWISE NOTED.
- BOTTOM HOLE LOCATIONS AND HORIZONTAL COMPLETION ZONE PROVIDED BY OTHERS.
- ALL REBAR AND CAPS ARE MEASURED IN INCHES.



0 1000

SCALE: 1"= 1000'
U.S. SURVEY FEET



LAMP RYNEARSON
& ASSOCIATES

4715 Innovation Drive 970.226.0342 | P
Fort Collins, CO 80525 970.226.0879 | F
www.LRA-inc.com

PROPOSED WELL LOCATION EXHIBIT
WAKE EAST 33E-20-10N
2 OF 3

DRAWN BY
BMA
PATH/FILENAME

DATE
8/2/18
I:\engineering\2015045.02 Extraction Wake East\WD102.dwg

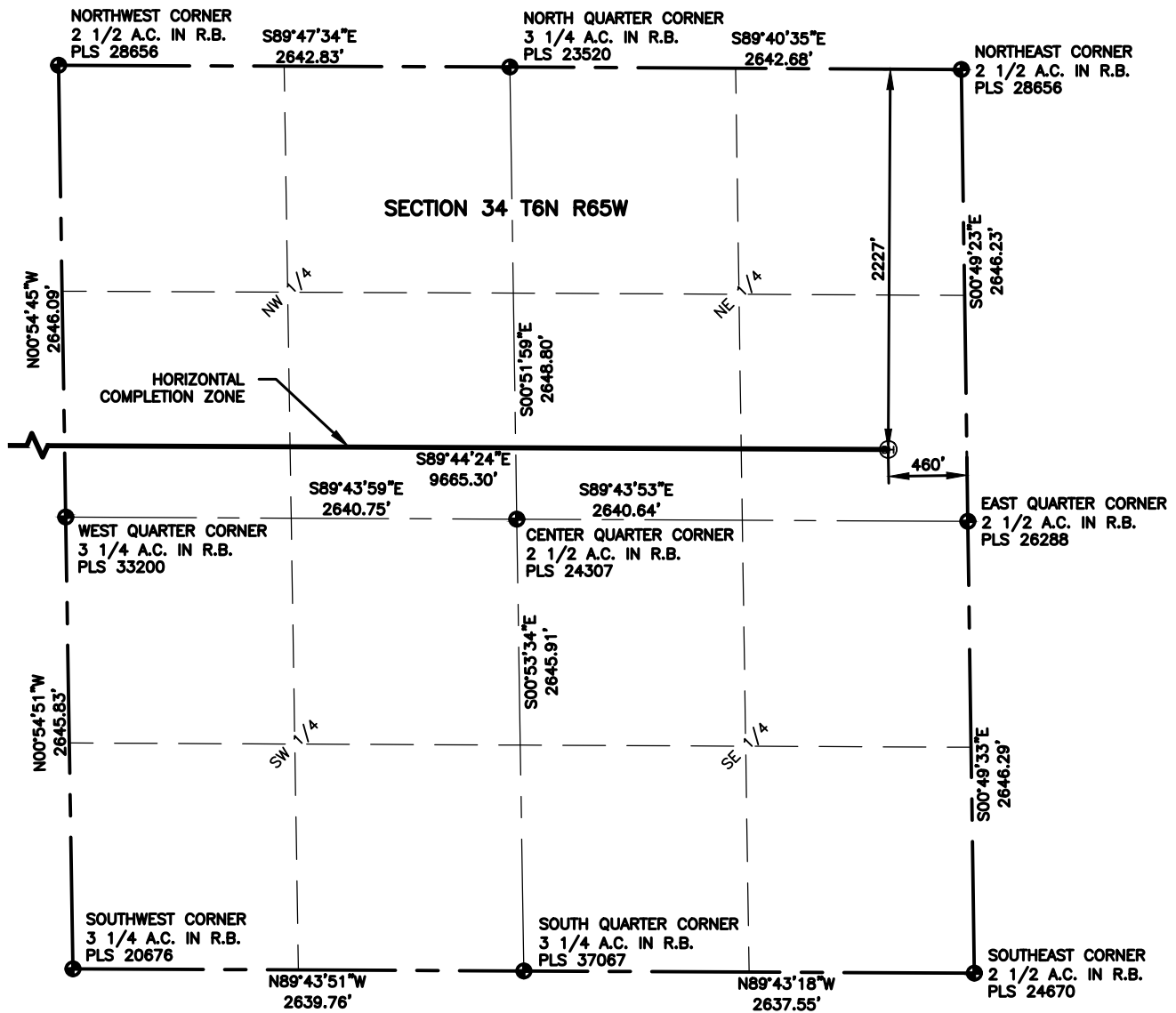
COGCC ID
0215045.02

PROJECT - TASK NUMBER
0215045.01

BOOK AND PAGE
MRI 4/25

0215045.02

SURFACE - LOCATION
NW1/4, SE1/4, SEC 32, T6N,
R65W

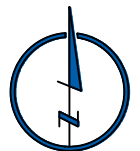


LEGEND

- ◈ COMPUTED ALIQUOT CORNER
- ⊙ PROPOSED WELL
- ⊙ ALIQUOT CORNER
- A.C. ALUMINUM CAP
- ⊙ BOTTOM HOLE
- R.B. RANGE BOX

NOTES:

- DISTANCES ARE MEASURED PERPENDICULAR TO NEAREST SECTION LINE AND ARE SHOWN ON THE SAME SIDE OF THE SECTION LINE WHERE THE WELL IS LOCATED.
- THIS MAP DOES NOT REPRESENT A MONUMENTED BOUNDARY SURVEY. SIXTEENTH CORNER LOCATIONS ARE COMPUTED, UNLESS OTHERWISE NOTED.
- BOTTOM HOLE LOCATIONS AND HORIZONTAL COMPLETION ZONE PROVIDED BY OTHERS.
- ALL REBAR AND CAPS ARE MEASURED IN INCHES.



0 1000

SCALE: 1" = 1000'
U.S. SURVEY FEET



LAMP RYNEARSON
& ASSOCIATES

4715 Innovation Drive 970.226.0342 | P
Fort Collins, CO 80525 970.226.0879 | F
www.LRA-inc.com

PROPOSED WELL LOCATION EXHIBIT
WAKE EAST 33E-20-10N
3 OF 3

DRAWN BY	DATE	COGCC ID	PROJECT - TASK NUMBER	BOOK AND PAGE
BMA	8/2/18	0215045.02	0215045.01	MRI 4/25
PATH/FILENAME	I:\engineering\0215045.02 Extraction Wake East\SURVEY\DRAWINGS\EXHIBITS\0215045.02			

SURFACE - LOCATION
NW1/4, SE1/4, SEC 32, T6N,
R65W