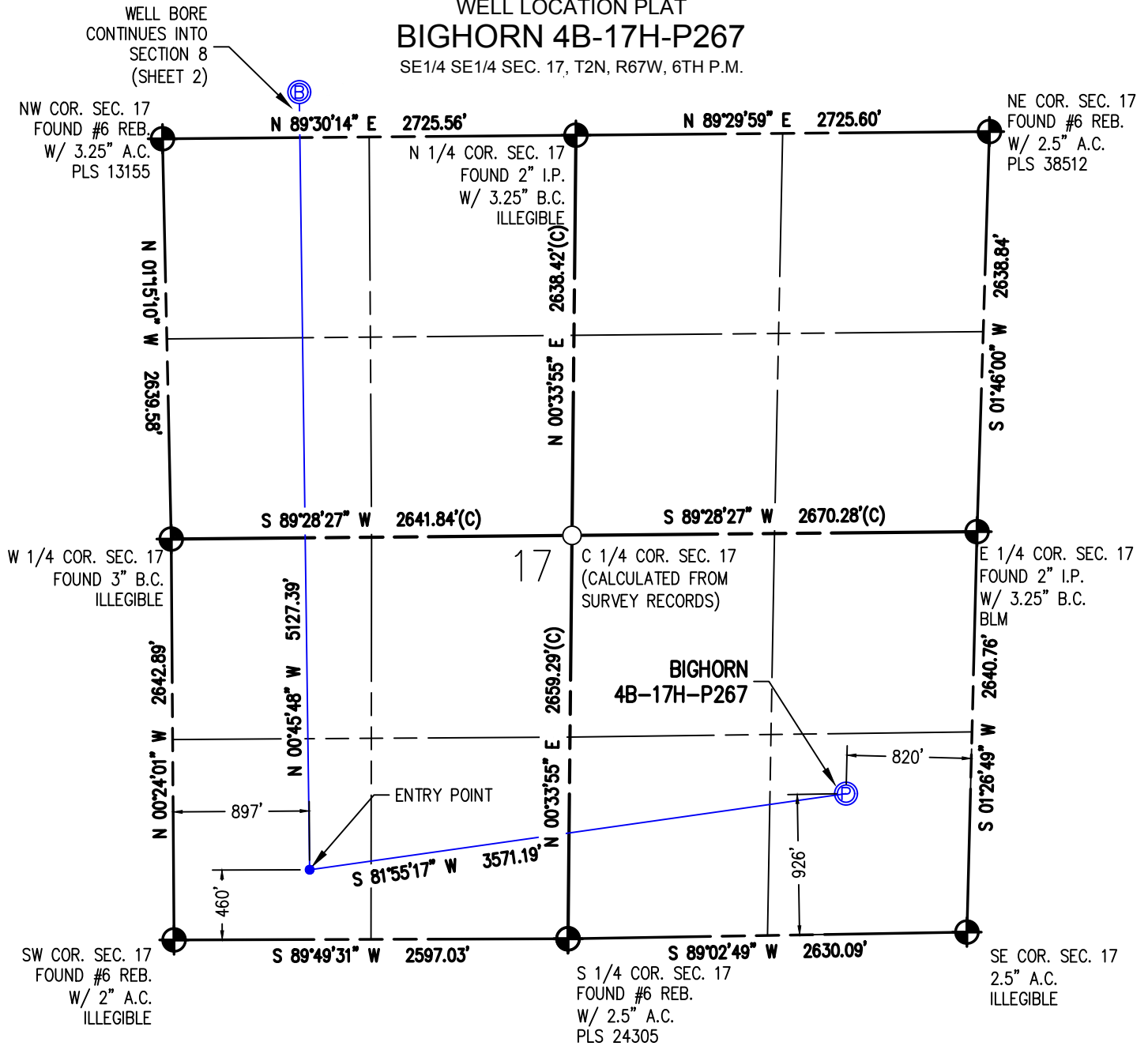


# WELL LOCATION PLAT BIGHORN 4B-17H-P267

SE 1/4 SE 1/4 SEC. 17, T2N, R67W, 6TH P.M.



I HEREBY CERTIFY THAT THIS WELL LOCATION CERTIFICATE WAS PREPARED BY ME, OR UNDER MY DIRECT SUPERVISION, THAT THE FIELD WORK WAS COMPLETED ON 1/20/2018, THAT IT IS NOT A LAND SURVEY PLAT OR AN IMPROVEMENT SURVEY PLAT, AND THAT IT IS NOT TO BE RELED UPON FOR ESTABLISHMENT OF FENCE, BUILDING OR OTHER FUTURE IMPROVEMENT LINES.

AARON A. DEMO  
Professional Land Surveyor Registration No. 38285  
State of Colorado  
FOR AND ON BEHALF OF BASELINE ENGINEERING CORP.

N

0 1000'  
Scale 1" = 1000' ft

SURFACE LOCATION  
SEC. 17, T2N, R67W  
GROUND ELEVATION = 4959.2'  
PDOP = 1.1  
LATITUDE = 40.133684°  
LONGITUDE = -104.908126°  
926' FSL, 820' FEL  
ENTRY POINT LOCATION  
SEC. 17, T2N, R67W  
LATITUDE = 40.132371°  
LONGITUDE = -104.920783°  
460' FSL, 897' FWL  
BOTTOM HOLE LOCATION  
SEC. 8, T2N, R67W  
LATITUDE = 40.146446°  
LONGITUDE = -104.920908°  
300' FSL, 897' FWL

## NOTES:

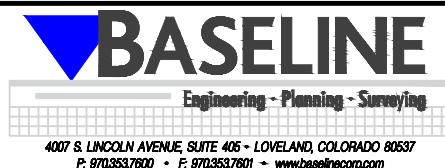
1. INDICATES SECTION CORNER
2. INDICATES CALCULATED CORNER
3. (C) INDICATES CALCULATED DIMENSION
4. ELEVATION BASED ON NAVD88 (GEOID12B)
5. BEARINGS DERIVED FROM COLORADO COORDINATE SYSTEM OF 1983 NORTH ZONE.
6. OPERATOR: TRAVIS WINNICKI
7. IMPROVEMENTS: SEE LOCATION DRAWING FOR ALL VISIBLE IMPROVEMENTS WITHIN 500' OF DISTURBED AREA.
8. WELL FOOTAGES ARE MEASURED AT RIGHT ANGLES TO THE SECTION LINES.

## NEAREST CULTURAL ITEMS:

BUILDING: 780' SE  
BUILDING UNIT: 947' NW  
HIGH OCCUPANCY BUILDING UNIT: 5280'+  
DESIGNATED OUTSIDE ACTIVITY AREA: 5280'+  
PUBLIC ROAD: WELD COUNTY ROAD 20 906' S  
ABOVE GROUND UTILITY: 949' S  
RAILROAD: 5280'+  
PROPERTY LINE: 326' S  
SURFACE USE: NON-CROP LAND.  
NEAREST EXISTING WELL: MILLER 3-17 547' NW

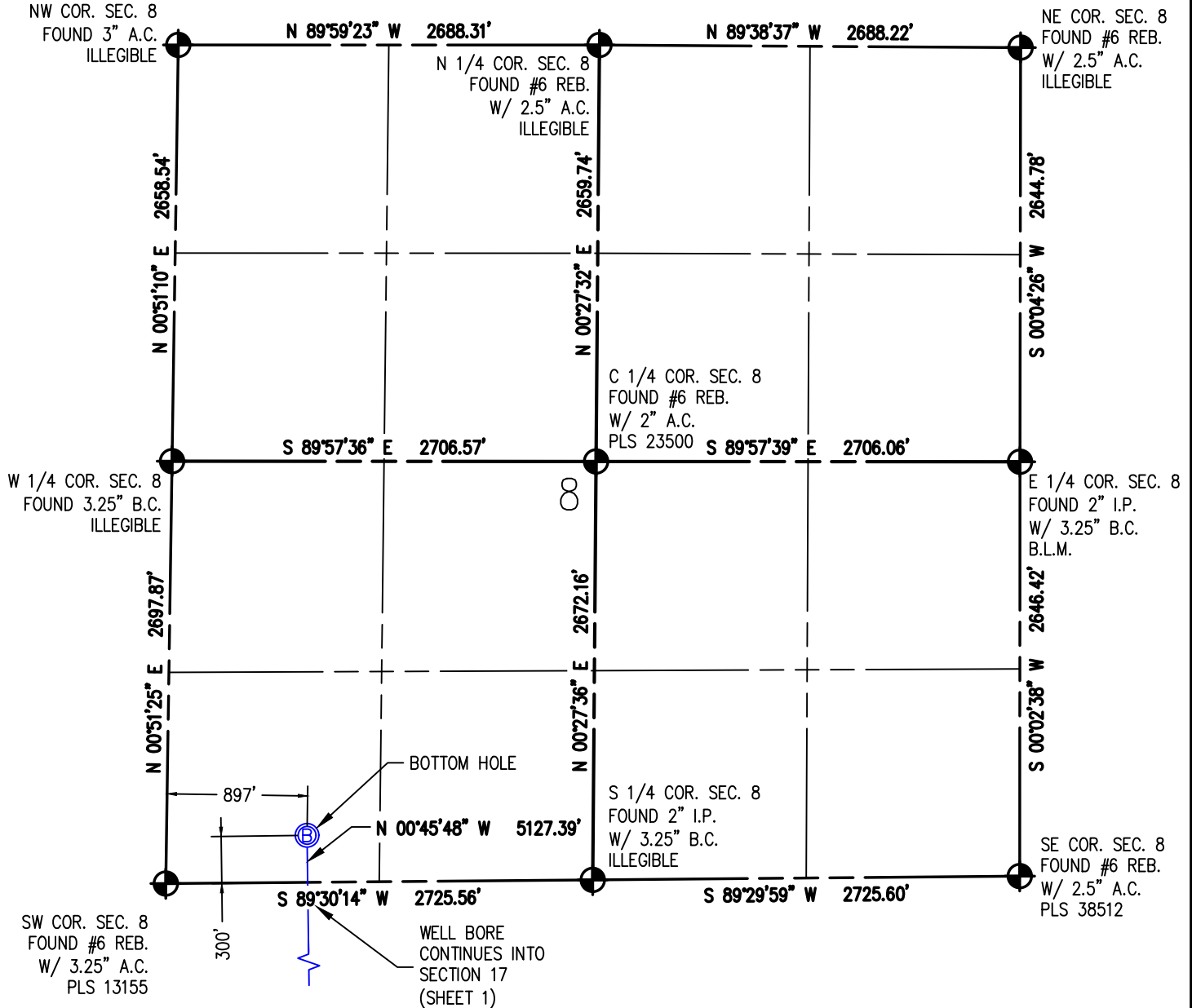


DRAWN BY	CHECKED BY
RPM	AAD
INITIAL SUBMITTAL	4/13/2018
REVISED	N/A
DRAWING SIZE	8.5" X 11"
JOB NO.	361A
SHEET	1 OF 2



# WELL LOCATION PLAT BIGHORN 4B-17H-P267

SE 1/4 SE 1/4 SEC. 17, T2N, R67W, 6TH P.M.



I HEREBY CERTIFY THAT THIS WELL LOCATION CERTIFICATE WAS PREPARED BY ME, OR UNDER MY DIRECT SUPERVISION, THAT THE FIELD WORK WAS COMPLETED ON 1/20/2018, THAT IT IS NOT A LAND SURVEY PLAT OR AN IMPROVEMENT SURVEY PLAT, AND THAT IT IS NOT TO BE RELED UPON FOR ESTABLISHMENT OF FENCE, BUILDING OR OTHER FUTURE IMPROVEMENT LINES.

AARON A. DEMO  
Professional Land Surveyor Registration No. 38285  
State of Colorado  
FOR AND ON BEHALF OF BASELINE ENGINEERING CORP.

N

Scale 1" = 1000' ft

SURFACE LOCATION  
SEC. 17, T2N, R67W  
GROUND ELEVATION = 4959.2'  
PDOP = 1.2  
LATITUDE = 40.133684°  
LONGITUDE = -104.908126°  
926' FSL, 820' FEL  
ENTRY POINT LOCATION  
SEC. 17, T2N, R67W  
LATITUDE = 40.132371°  
LONGITUDE = -104.920783°  
460' FSL, 897' FWL  
BOTTOM HOLE LOCATION  
SEC. 8, T2N, R67W  
LATITUDE = 40.146446°  
LONGITUDE = -104.920908°  
300' FSL, 897' FWL

## NOTES:

1. INDICATES SECTION CORNER
2. INDICATES CALCULATED CORNER
3. (C) INDICATES CALCULATED DIMENSION
4. ELEVATION BASED ON NAVD88 (GEOID12B)
5. BEARINGS DERIVED FROM COLORADO COORDINATE SYSTEM OF 1983 NORTH ZONE.
6. OPERATOR: TRAVIS WINNICKI
7. IMPROVEMENTS: SEE LOCATION DRAWING FOR ALL VISIBLE IMPROVEMENTS WITHIN 500' OF DISTURBED AREA.
8. WELL FOOTAGES ARE MEASURED AT RIGHT ANGLES TO THE SECTION LINES.

## NEAREST CULTURAL ITEMS:

BUILDING: 780' SE  
BUILDING UNIT: 947' NW  
HIGH OCCUPANCY BUILDING UNIT: 5280'+  
DESIGNATED OUTSIDE ACTIVITY AREA: 5280'+  
PUBLIC ROAD: WELD COUNTY ROAD 20 906' S  
ABOVE GROUND UTILITY: 949' S  
RAILROAD: 5280'+  
PROPERTY LINE: 326' S  
SURFACE USE: NON-CROP LAND.  
NEAREST EXISTING WELL: MILLER 3-17 547' NW



DRAWN BY  
RPM

CHECKED BY  
AAD

INITIAL SUBMITTAL 4/13/2018

REVISED N/A

DRAWING SIZE 8.5" X 11"

JOB NO. 361A

SHEET 2 OF 2

**BASELINE**  
Engineering - Planning - Surveying

4007 S. LINCOLN AVENUE, SUITE 405 • LOVELAND, COLORADO 80537  
P: 970.353.7600 • F: 970.353.7601 • www.baselinecorp.com

PLOT\_STAMP