

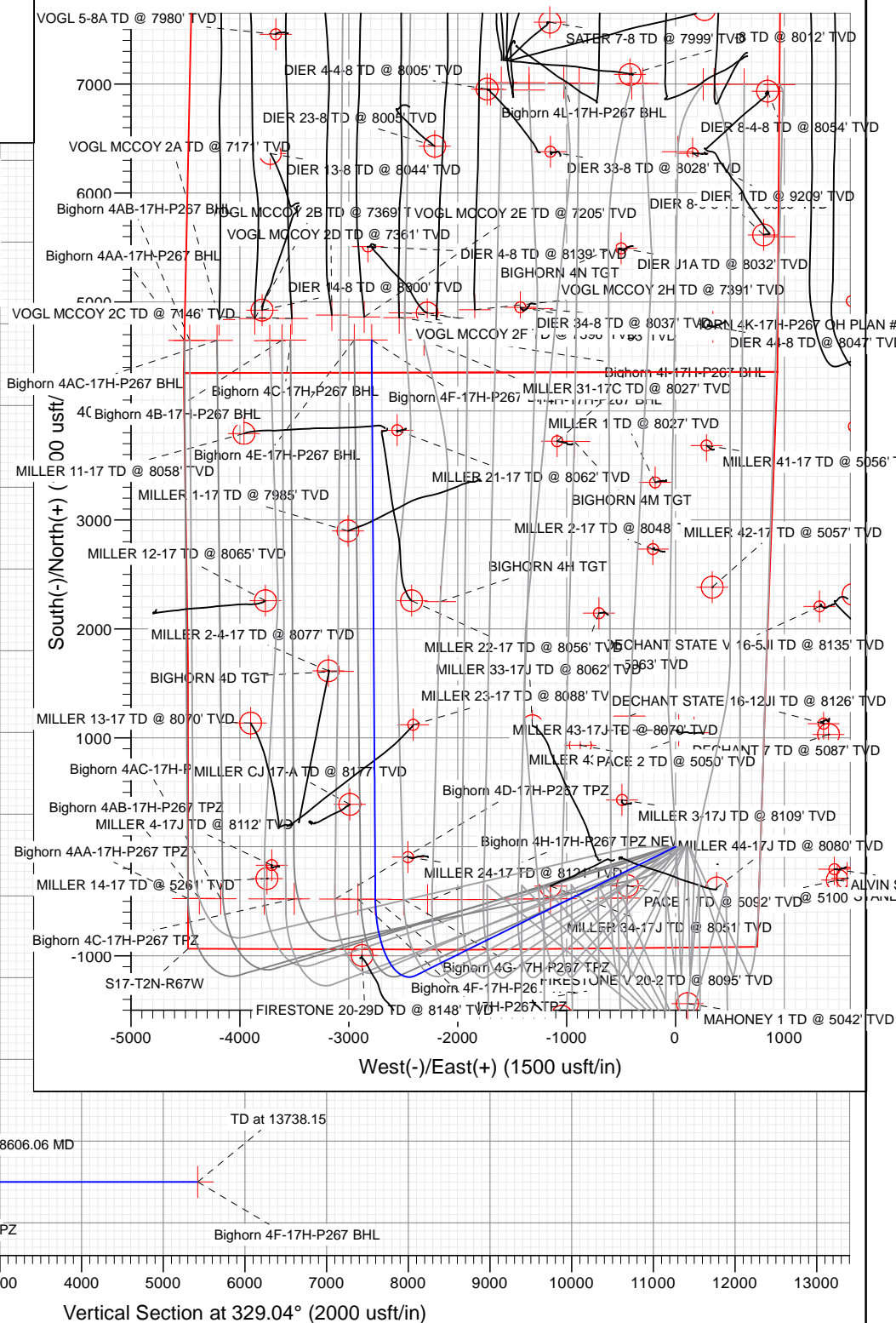


Sec	MD	Inc	Azi	TVD	+N/-S	+E/-W	Dleg	TFace	VSec	Target
1	0.00	0.00	0.00	0.00	0.00	0.00	0.00	0.00	0.00	
2	800.00	0.00	0.00	800.00	0.00	0.00	0.00	0.00	0.00	
3	1950.00	23.00	243.75	1919.36	-100.73	-204.25	2.00	243.75	18.69	
4	2750.00	23.00	243.75	2655.77	-238.98	-484.60	0.00	0.00	44.34	
5	2983.06	27.66	243.65	2866.36	-283.15	-573.96	2.00	-0.57	52.43	
6	7334.43	27.66	243.65	6720.41	-1179.78	-2384.15	0.00	0.00	214.70	
7	8606.06	90.00	359.62	7500.00	-480.97	-2756.11	8.00	113.34	1005.30	Bighorn 4F-17H-P267 TPZ
8	13738.15	90.00	359.62	7500.00	465.01	-2789.93	0.00	0.00	5423.61	Bighorn 4F-17H-P267 BH

Type TD	Target No Target (Freehand)	Azimuth 329.04	Origin Type Spot	N/S 0.00	E/W 0.00	From TVD 0.00
Name	TVD	+N/-S	+E/-W	Latitude	Longitude	
Biphorn 4F-17H-P267 BHL	7500.00	4651.01	-2789.93	40.146451	-104.917963	
Biphorn 4F-17H-P267 TPZ	7500.00	480.97	-2758.93	40.133263	-104.917840	

T/M  
 Azimuths to True North  
 Magnetic North: 0.00°  
 Magnetic Field  
 Strength: 0.0snT  
 Dip Angle: 0.00°  
 Date: 8/8/2017  
 Model: USER DEFINED

Start Build 2.00  
 Start 800.00 hold at 1950.00 MD  
 Start DLS 2.00 TFO -0.57  
 Start 4351.36 hold at 2983.06 MD  
 Start DLS 8.00 TFO 113.34  
 Start 5132.09 hold  
 Bighorn 4F-17H-P267



+N/-S	+E/-W	Northing	Easting	Latitude	Longitude
0.00	0.00	1292097.25	3165529.34	40.133684	-104.907983



# Cathedral Energy Services

## Planning Report

<b>Database:</b>	USA EDM 5000 Multi Users DB	<b>Local Co-ordinate Reference:</b>	Well BIGHORN 4F-17H-P267
<b>Company:</b>	Crestone Peak Resources	<b>TVD Reference:</b>	23' KB @ 4982.00usft
<b>Project:</b>	DJ BASIN	<b>MD Reference:</b>	23' KB @ 4982.00usft
<b>Site:</b>	BIGHORN	<b>North Reference:</b>	True
<b>Well:</b>	BIGHORN 4F-17H-P267	<b>Survey Calculation Method:</b>	Minimum Curvature
<b>Wellbore:</b>	OH		
<b>Design:</b>	PLAN #1		

Project	DJ BASIN		
Map System:	US State Plane 1983	System Datum:	Mean Sea Level
Geo Datum:	North American Datum 1983		
Map Zone:	Colorado Northern Zone		

Site		BIGHORN			
Site Position:		Northing:	1,292,097.01 usft	Latitude:	40.133684
From:	Lat/Long	Easting:	3,165,479.29 usft	Longitude:	-104.908162
Position Uncertainty:	0.00 usft	Slot Radius:	13-3/16 "	Grid Convergence:	0.38 °

Well	BIGHORN 4F-17H-P267					
Well Position	+N/-S	0.00 usft	Northing:	1,292,097.25 usft	Latitude:	40.133684
	+E/-W	0.00 usft	Easting:	3,165,529.34 usft	Longitude:	-104.907983
Position Uncertainty		0.00 usft	Wellhead Elevation:	usft	Ground Level:	4,959.00 usft

Wellbore	OH				
Magnetics	Model Name	Sample Date	Declination (°)	Dip Angle (°)	Field Strength (nT)
	User Defined	8/8/2017	0.00	0.00	0.00000000

Design	PLAN #1			
Audit Notes:				
Version:	Phase:	PLAN	Tie On Depth:	0.00
Vertical Section:	Depth From (TVD) (usft)	+N/-S (usft)	+E/-W (usft)	Direction (°)
	0.00	0.00	0.00	329.04

Plan Sections										
Measured Depth (usft)	Inclination (°)	Azimuth (°)	Vertical Depth (usft)	+N/-S (usft)	+E/-W (usft)	Dogleg Rate (°/100usft)	Build Rate (°/100usft)	Turn Rate (°/100usft)	TFO (°)	Target
0.00	0.00	0.00	0.00	0.00	0.00	0.00	0.00	0.00	0.00	
800.00	0.00	0.00	800.00	0.00	0.00	0.00	0.00	0.00	0.00	
1,950.00	23.00	243.75	1,919.36	-100.73	-204.25	2.00	2.00	0.00	243.75	
2,750.00	23.00	243.75	2,655.77	-238.98	-484.60	0.00	0.00	0.00	0.00	
2,983.06	27.66	243.65	2,866.36	-283.15	-573.96	2.00	2.00	-0.04	-0.57	
7,334.43	27.66	243.65	6,720.41	-1,179.78	-2,384.15	0.00	0.00	0.00	0.00	
8,606.06	90.00	359.62	7,500.00	-480.97	-2,756.11	8.00	4.90	9.12	113.34	Bighorn 4F-17H-P267
13,738.15	90.00	359.62	7,500.00	4,651.01	-2,789.93	0.00	0.00	0.00	0.00	Bighorn 4F-17H-P267

# Cathedral Energy Services

## Planning Report

<b>Database:</b>	USA EDM 5000 Multi Users DB	<b>Local Co-ordinate Reference:</b>	Well BIGHORN 4F-17H-P267
<b>Company:</b>	Crestone Peak Resources	<b>TVD Reference:</b>	23' KB @ 4982.00usft
<b>Project:</b>	DJ BASIN	<b>MD Reference:</b>	23' KB @ 4982.00usft
<b>Site:</b>	BIGHORN	<b>North Reference:</b>	True
<b>Well:</b>	BIGHORN 4F-17H-P267	<b>Survey Calculation Method:</b>	Minimum Curvature
<b>Wellbore:</b>	OH		
<b>Design:</b>	PLAN #1		

### Planned Survey

Measured Depth (usft)	Inclination (°)	Azimuth (°)	Vertical Depth (usft)	+N/-S (usft)	+E/-W (usft)	Vertical Section (usft)	Dogleg Rate (°/100usft)	Build Rate (°/100u)	Comments / Formations
0.00	0.00	0.00	0.00	0.00	0.00	0.00	0.00	0.00	
100.00	0.00	0.00	100.00	0.00	0.00	0.00	0.00	0.00	
200.00	0.00	0.00	200.00	0.00	0.00	0.00	0.00	0.00	
300.00	0.00	0.00	300.00	0.00	0.00	0.00	0.00	0.00	
400.00	0.00	0.00	400.00	0.00	0.00	0.00	0.00	0.00	
500.00	0.00	0.00	500.00	0.00	0.00	0.00	0.00	0.00	
600.00	0.00	0.00	600.00	0.00	0.00	0.00	0.00	0.00	
700.00	0.00	0.00	700.00	0.00	0.00	0.00	0.00	0.00	
800.00	0.00	0.00	800.00	0.00	0.00	0.00	0.00	0.00	
900.00	2.00	243.75	899.98	-0.77	-1.57	0.14	2.00	2.00	
1,000.00	4.00	243.75	999.84	-3.09	-6.26	0.57	2.00	2.00	
1,100.00	6.00	243.75	1,099.45	-6.94	-14.08	1.29	2.00	2.00	
1,200.00	8.00	243.75	1,198.70	-12.33	-25.00	2.29	2.00	2.00	
1,300.00	10.00	243.75	1,297.47	-19.25	-39.03	3.57	2.00	2.00	
1,400.00	12.00	243.75	1,395.62	-27.69	-56.15	5.14	2.00	2.00	
1,500.00	14.00	243.75	1,493.06	-37.64	-76.32	6.98	2.00	2.00	
1,600.00	16.00	243.75	1,589.64	-49.08	-99.53	9.11	2.00	2.00	
1,700.00	18.00	243.75	1,685.27	-62.01	-125.75	11.51	2.00	2.00	
1,800.00	20.00	243.75	1,779.82	-76.41	-154.95	14.18	2.00	2.00	
1,900.00	22.00	243.75	1,873.17	-92.26	-187.09	17.12	2.00	2.00	
1,950.00	23.00	243.75	1,919.36	-100.73	-204.25	18.69	2.00	2.00	
2,000.00	23.00	243.75	1,965.39	-109.37	-221.77	20.29	0.00	0.00	
2,100.00	23.00	243.75	2,057.44	-126.65	-256.82	23.50	0.00	0.00	
2,200.00	23.00	243.75	2,149.49	-143.93	-291.86	26.71	0.00	0.00	
2,300.00	23.00	243.75	2,241.54	-161.21	-326.90	29.91	0.00	0.00	
2,400.00	23.00	243.75	2,333.59	-178.49	-361.95	33.12	0.00	0.00	
2,500.00	23.00	243.75	2,425.64	-195.77	-396.99	36.33	0.00	0.00	
2,600.00	23.00	243.75	2,517.69	-213.06	-432.03	39.53	0.00	0.00	
2,700.00	23.00	243.75	2,609.74	-230.34	-467.08	42.74	0.00	0.00	
2,750.00	23.00	243.75	2,655.77	-238.98	-484.60	44.34	0.00	0.00	
2,800.00	24.00	243.73	2,701.62	-247.80	-502.48	45.98	2.00	2.00	
2,900.00	26.00	243.68	2,792.24	-266.52	-540.37	49.41	2.00	2.00	
2,983.06	27.66	243.65	2,866.36	-283.15	-573.96	52.43	2.00	2.00	
3,000.00	27.66	243.65	2,881.36	-286.64	-581.01	53.06	0.00	0.00	
3,100.00	27.66	243.65	2,969.94	-307.25	-622.61	56.79	0.00	0.00	
3,200.00	27.66	243.65	3,058.51	-327.85	-664.21	60.52	0.00	0.00	
3,300.00	27.66	243.65	3,147.08	-348.46	-705.81	64.25	0.00	0.00	
3,400.00	27.66	243.65	3,235.65	-369.07	-747.41	67.98	0.00	0.00	
3,500.00	27.66	243.65	3,324.22	-389.67	-789.01	71.71	0.00	0.00	
3,600.00	27.66	243.65	3,412.79	-410.28	-830.61	75.44	0.00	0.00	
3,700.00	27.66	243.65	3,501.36	-430.88	-872.21	79.17	0.00	0.00	
3,800.00	27.66	243.65	3,589.93	-451.49	-913.81	82.90	0.00	0.00	
3,900.00	27.66	243.65	3,678.50	-472.09	-955.41	86.63	0.00	0.00	
4,000.00	27.66	243.65	3,767.07	-492.70	-997.01	90.36	0.00	0.00	
4,100.00	27.66	243.65	3,855.64	-513.30	-1,038.61	94.08	0.00	0.00	
4,200.00	27.66	243.65	3,944.22	-533.91	-1,080.22	97.81	0.00	0.00	
4,300.00	27.66	243.65	4,032.79	-554.52	-1,121.82	101.54	0.00	0.00	
4,400.00	27.66	243.65	4,121.36	-575.12	-1,163.42	105.27	0.00	0.00	
4,500.00	27.66	243.65	4,209.93	-595.73	-1,205.02	109.00	0.00	0.00	
4,600.00	27.66	243.65	4,298.50	-616.33	-1,246.62	112.73	0.00	0.00	
4,700.00	27.66	243.65	4,387.07	-636.94	-1,288.22	116.46	0.00	0.00	
4,800.00	27.66	243.65	4,475.64	-657.54	-1,329.82	120.19	0.00	0.00	

# Cathedral Energy Services

## Planning Report

<b>Database:</b>	USA EDM 5000 Multi Users DB	<b>Local Co-ordinate Reference:</b>	Well BIGHORN 4F-17H-P267
<b>Company:</b>	Crestone Peak Resources	<b>TVD Reference:</b>	23' KB @ 4982.00usft
<b>Project:</b>	DJ BASIN	<b>MD Reference:</b>	23' KB @ 4982.00usft
<b>Site:</b>	BIGHORN	<b>North Reference:</b>	True
<b>Well:</b>	BIGHORN 4F-17H-P267	<b>Survey Calculation Method:</b>	Minimum Curvature
<b>Wellbore:</b>	OH		
<b>Design:</b>	PLAN #1		

### Planned Survey

Measured Depth (usft)	Inclination (°)	Azimuth (°)	Vertical Depth (usft)	+N/-S (usft)	+E/-W (usft)	Vertical Section (usft)	Dogleg Rate (°/100usft)	Build Rate (°/100u)	Comments / Formations
4,900.00	27.66	243.65	4,564.21	-678.15	-1,371.42	123.92	0.00	0.00	
5,000.00	27.66	243.65	4,652.78	-698.75	-1,413.02	127.65	0.00	0.00	
5,100.00	27.66	243.65	4,741.35	-719.36	-1,454.62	131.38	0.00	0.00	
5,200.00	27.66	243.65	4,829.93	-739.97	-1,496.22	135.11	0.00	0.00	
5,300.00	27.66	243.65	4,918.50	-760.57	-1,537.82	138.84	0.00	0.00	
5,400.00	27.66	243.65	5,007.07	-781.18	-1,579.42	142.56	0.00	0.00	
5,500.00	27.66	243.65	5,095.64	-801.78	-1,621.02	146.29	0.00	0.00	
5,600.00	27.66	243.65	5,184.21	-822.39	-1,662.62	150.02	0.00	0.00	
5,700.00	27.66	243.65	5,272.78	-842.99	-1,704.22	153.75	0.00	0.00	
5,800.00	27.66	243.65	5,361.35	-863.60	-1,745.82	157.48	0.00	0.00	
5,900.00	27.66	243.65	5,449.92	-884.20	-1,787.42	161.21	0.00	0.00	
6,000.00	27.66	243.65	5,538.49	-904.81	-1,829.02	164.94	0.00	0.00	
6,100.00	27.66	243.65	5,627.06	-925.42	-1,870.62	168.67	0.00	0.00	
6,200.00	27.66	243.65	5,715.63	-946.02	-1,912.22	172.40	0.00	0.00	
6,300.00	27.66	243.65	5,804.21	-966.63	-1,953.83	176.13	0.00	0.00	
6,400.00	27.66	243.65	5,892.78	-987.23	-1,995.43	179.86	0.00	0.00	
6,500.00	27.66	243.65	5,981.35	-1,007.84	-2,037.03	183.59	0.00	0.00	
6,600.00	27.66	243.65	6,069.92	-1,028.44	-2,078.63	187.32	0.00	0.00	
6,700.00	27.66	243.65	6,158.49	-1,049.05	-2,120.23	191.04	0.00	0.00	
6,800.00	27.66	243.65	6,247.06	-1,069.65	-2,161.83	194.77	0.00	0.00	
6,900.00	27.66	243.65	6,335.63	-1,090.26	-2,203.43	198.50	0.00	0.00	
7,000.00	27.66	243.65	6,424.20	-1,110.87	-2,245.03	202.23	0.00	0.00	
7,100.00	27.66	243.65	6,512.77	-1,131.47	-2,286.63	205.96	0.00	0.00	
7,200.00	27.66	243.65	6,601.34	-1,152.08	-2,328.23	209.69	0.00	0.00	
7,300.00	27.66	243.65	6,689.91	-1,172.68	-2,369.83	213.42	0.00	0.00	
7,334.43	27.66	243.65	6,720.41	-1,179.78	-2,384.15	214.70	0.00	0.00	
7,400.00	26.00	254.69	6,778.96	-1,190.33	-2,411.67	219.81	8.00	-2.54	
7,500.00	25.27	273.17	6,869.26	-1,194.95	-2,454.19	237.72	8.00	-0.72	
7,600.00	26.85	291.09	6,959.23	-1,185.62	-2,496.65	267.56	8.00	1.58	
7,700.00	30.38	306.14	7,047.11	-1,162.54	-2,538.21	308.73	8.00	3.53	
7,800.00	35.28	317.86	7,131.20	-1,126.16	-2,578.08	360.44	8.00	4.89	
7,900.00	41.04	326.86	7,209.86	-1,077.18	-2,615.46	421.67	8.00	5.77	
8,000.00	47.36	333.91	7,281.55	-1,016.56	-2,649.65	491.24	8.00	6.32	
8,100.00	54.03	339.63	7,344.89	-945.47	-2,679.96	567.80	8.00	6.67	
8,200.00	60.93	344.44	7,398.63	-865.30	-2,705.81	649.85	8.00	6.90	
8,300.00	67.98	348.64	7,441.74	-777.61	-2,726.71	735.79	8.00	7.05	
8,400.00	75.13	352.43	7,473.37	-684.11	-2,742.23	823.95	8.00	7.15	
8,500.00	82.33	355.98	7,492.91	-586.62	-2,752.08	912.63	8.00	7.20	
8,600.00	89.56	359.42	7,499.98	-487.03	-2,756.06	1,000.08	8.00	7.23	
8,606.06	90.00	359.62	7,500.00	-480.97	-2,756.11	1,005.30	8.00	7.24	Bighorn 4F-17H-P267 TPZ
8,700.00	90.00	359.62	7,500.00	-387.03	-2,756.73	1,086.18	0.00	0.00	
8,800.00	90.00	359.62	7,500.00	-287.04	-2,757.39	1,172.27	0.00	0.00	
8,900.00	90.00	359.62	7,500.00	-187.04	-2,758.05	1,258.36	0.00	0.00	
9,000.00	90.00	359.62	7,500.00	-87.04	-2,758.71	1,344.45	0.00	0.00	
9,100.00	90.00	359.62	7,500.00	12.96	-2,759.37	1,430.54	0.00	0.00	
9,200.00	90.00	359.62	7,500.00	112.96	-2,760.03	1,516.63	0.00	0.00	
9,300.00	90.00	359.62	7,500.00	212.95	-2,760.69	1,602.73	0.00	0.00	
9,400.00	90.00	359.62	7,500.00	312.95	-2,761.35	1,688.82	0.00	0.00	
9,500.00	90.00	359.62	7,500.00	412.95	-2,762.00	1,774.91	0.00	0.00	
9,600.00	90.00	359.62	7,500.00	512.95	-2,762.66	1,861.00	0.00	0.00	
9,700.00	90.00	359.62	7,500.00	612.94	-2,763.32	1,947.09	0.00	0.00	
9,800.00	90.00	359.62	7,500.00	712.94	-2,763.98	2,033.19	0.00	0.00	

# Cathedral Energy Services

## Planning Report

<b>Database:</b>	USA EDM 5000 Multi Users DB	<b>Local Co-ordinate Reference:</b>	Well BIGHORN 4F-17H-P267
<b>Company:</b>	Crestone Peak Resources	<b>TVD Reference:</b>	23' KB @ 4982.00usft
<b>Project:</b>	DJ BASIN	<b>MD Reference:</b>	23' KB @ 4982.00usft
<b>Site:</b>	BIGHORN	<b>North Reference:</b>	True
<b>Well:</b>	BIGHORN 4F-17H-P267	<b>Survey Calculation Method:</b>	Minimum Curvature
<b>Wellbore:</b>	OH		
<b>Design:</b>	PLAN #1		

### Planned Survey

Measured Depth (usft)	Inclination (°)	Azimuth (°)	Vertical Depth (usft)	+N/-S (usft)	+E/-W (usft)	Vertical Section (usft)	Dogleg Rate (°/100usft)	Build Rate (°/100u)	Comments / Formations
9,900.00	90.00	359.62	7,500.00	812.94	-2,764.64	2,119.28	0.00	0.00	
10,000.00	90.00	359.62	7,500.00	912.94	-2,765.30	2,205.37	0.00	0.00	
10,100.00	90.00	359.62	7,500.00	1,012.94	-2,765.96	2,291.46	0.00	0.00	
10,200.00	90.00	359.62	7,500.00	1,112.93	-2,766.62	2,377.55	0.00	0.00	
10,300.00	90.00	359.62	7,500.00	1,212.93	-2,767.28	2,463.65	0.00	0.00	
10,400.00	90.00	359.62	7,500.00	1,312.93	-2,767.93	2,549.74	0.00	0.00	
10,500.00	90.00	359.62	7,500.00	1,412.93	-2,768.59	2,635.83	0.00	0.00	
10,600.00	90.00	359.62	7,500.00	1,512.93	-2,769.25	2,721.92	0.00	0.00	
10,700.00	90.00	359.62	7,500.00	1,612.92	-2,769.91	2,808.01	0.00	0.00	
10,800.00	90.00	359.62	7,500.00	1,712.92	-2,770.57	2,894.10	0.00	0.00	
10,900.00	90.00	359.62	7,500.00	1,812.92	-2,771.23	2,980.20	0.00	0.00	
11,000.00	90.00	359.62	7,500.00	1,912.92	-2,771.89	3,066.29	0.00	0.00	
11,100.00	90.00	359.62	7,500.00	2,012.91	-2,772.55	3,152.38	0.00	0.00	
11,200.00	90.00	359.62	7,500.00	2,112.91	-2,773.21	3,238.47	0.00	0.00	
11,300.00	90.00	359.62	7,500.00	2,212.91	-2,773.86	3,324.56	0.00	0.00	
11,400.00	90.00	359.62	7,500.00	2,312.91	-2,774.52	3,410.66	0.00	0.00	
11,500.00	90.00	359.62	7,500.00	2,412.91	-2,775.18	3,496.75	0.00	0.00	
11,600.00	90.00	359.62	7,500.00	2,512.90	-2,775.84	3,582.84	0.00	0.00	
11,700.00	90.00	359.62	7,500.00	2,612.90	-2,776.50	3,668.93	0.00	0.00	
11,800.00	90.00	359.62	7,500.00	2,712.90	-2,777.16	3,755.02	0.00	0.00	
11,900.00	90.00	359.62	7,500.00	2,812.90	-2,777.82	3,841.11	0.00	0.00	
12,000.00	90.00	359.62	7,500.00	2,912.89	-2,778.48	3,927.21	0.00	0.00	
12,100.00	90.00	359.62	7,500.00	3,012.89	-2,779.14	4,013.30	0.00	0.00	
12,200.00	90.00	359.62	7,500.00	3,112.89	-2,779.79	4,099.39	0.00	0.00	
12,300.00	90.00	359.62	7,500.00	3,212.89	-2,780.45	4,185.48	0.00	0.00	
12,400.00	90.00	359.62	7,500.00	3,312.89	-2,781.11	4,271.57	0.00	0.00	
12,500.00	90.00	359.62	7,500.00	3,412.88	-2,781.77	4,357.67	0.00	0.00	
12,600.00	90.00	359.62	7,500.00	3,512.88	-2,782.43	4,443.76	0.00	0.00	
12,700.00	90.00	359.62	7,500.00	3,612.88	-2,783.09	4,529.85	0.00	0.00	
12,800.00	90.00	359.62	7,500.00	3,712.88	-2,783.75	4,615.94	0.00	0.00	
12,900.00	90.00	359.62	7,500.00	3,812.88	-2,784.41	4,702.03	0.00	0.00	
13,000.00	90.00	359.62	7,500.00	3,912.87	-2,785.07	4,788.13	0.00	0.00	
13,100.00	90.00	359.62	7,500.00	4,012.87	-2,785.72	4,874.22	0.00	0.00	
13,200.00	90.00	359.62	7,500.00	4,112.87	-2,786.38	4,960.31	0.00	0.00	
13,300.00	90.00	359.62	7,500.00	4,212.87	-2,787.04	5,046.40	0.00	0.00	
13,400.00	90.00	359.62	7,500.00	4,312.86	-2,787.70	5,132.49	0.00	0.00	
13,500.00	90.00	359.62	7,500.00	4,412.86	-2,788.36	5,218.58	0.00	0.00	
13,600.00	90.00	359.62	7,500.00	4,512.86	-2,789.02	5,304.68	0.00	0.00	
13,700.00	90.00	359.62	7,500.00	4,612.86	-2,789.68	5,390.77	0.00	0.00	
13,738.15	90.00	359.62	7,500.00	4,651.01	-2,789.93	5,423.61	0.00	0.00	Bighorn 4F-17H-P267 BHL

# Cathedral Energy Services

## Planning Report

<b>Database:</b>	USA EDM 5000 Multi Users DB	<b>Local Co-ordinate Reference:</b>	Well BIGHORN 4F-17H-P267
<b>Company:</b>	Crestone Peak Resources	<b>TVD Reference:</b>	23' KB @ 4982.00usft
<b>Project:</b>	DJ BASIN	<b>MD Reference:</b>	23' KB @ 4982.00usft
<b>Site:</b>	BIGHORN	<b>North Reference:</b>	True
<b>Well:</b>	BIGHORN 4F-17H-P267	<b>Survey Calculation Method:</b>	Minimum Curvature
<b>Wellbore:</b>	OH		
<b>Design:</b>	PLAN #1		

Targets									
Target Name									
- hit/miss target	Dip Angle	Dip Dir.	TVD	+N/-S	+E/-W	Northing	Easting	Latitude	Longitude
- Shape	(°)	(°)	(usft)	(usft)	(usft)	(usft)	(usft)		
Bighorn 4F-17H-P267 B	0.00	0.00	7,500.00	4,651.01	-2,789.93	1,296,729.53	3,162,708.42	40.146451	-104.917963
- plan hits target center									
- Point									
Bighorn 4F-17H-P267 TI	0.00	0.00	7,500.00	-480.97	-2,756.11	1,291,597.89	3,162,776.50	40.132363	-104.917840
- plan hits target center									
- Point									