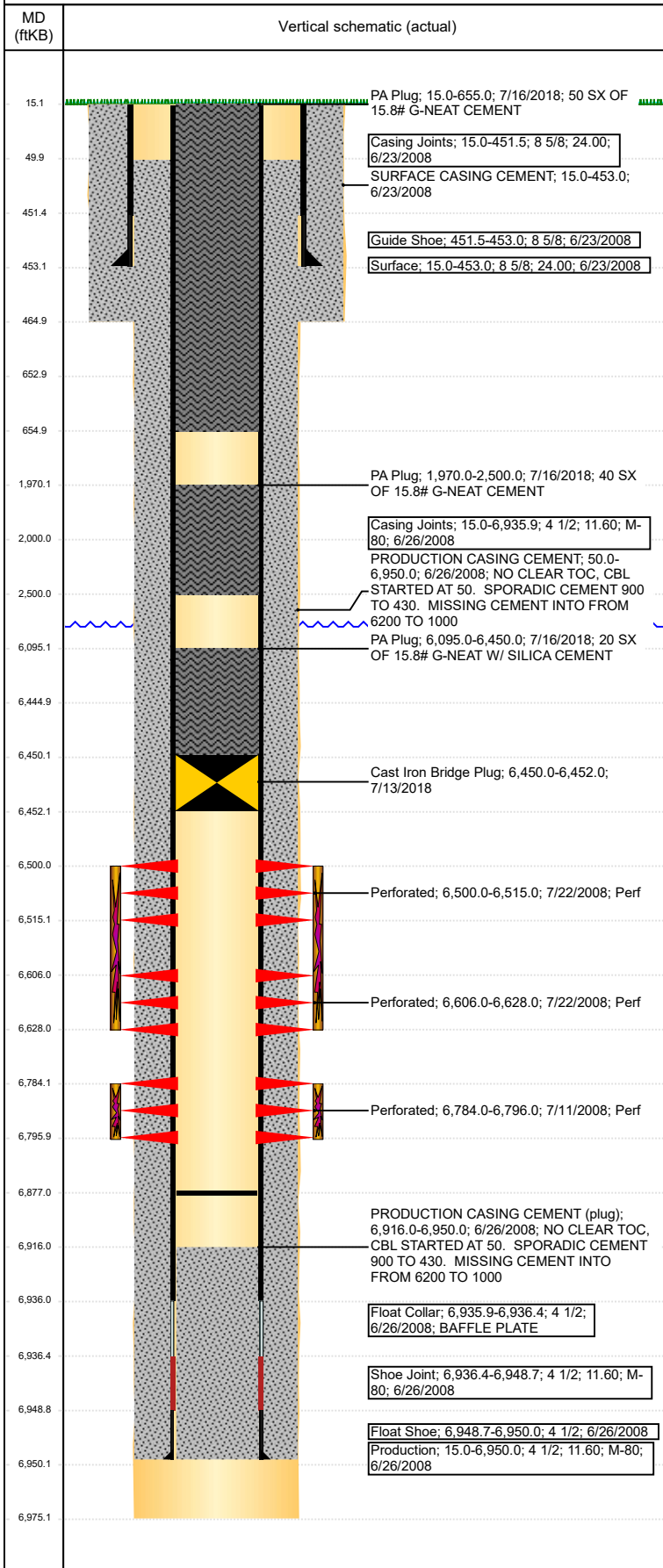


Well Name: LAPP 13-34

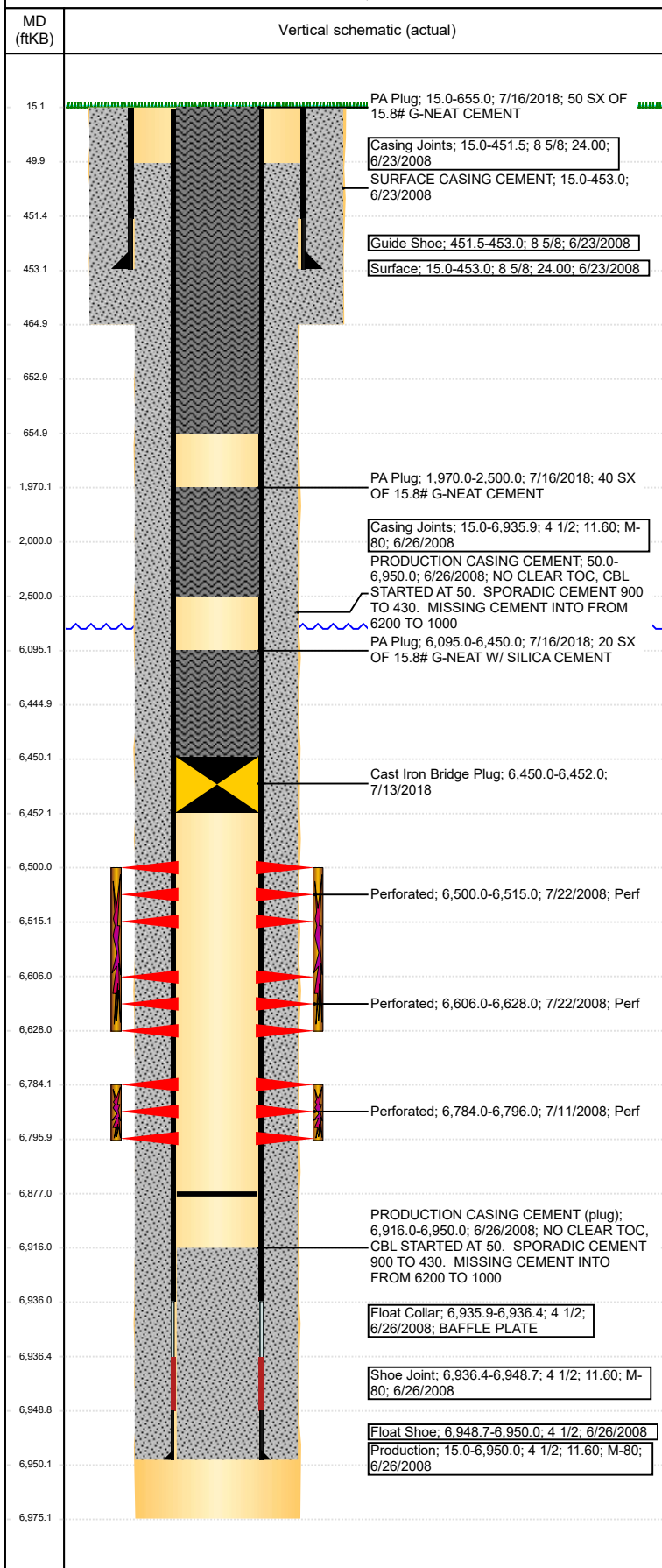
VERTICAL - ORIGINAL HOLE, 8/7/2018 8:49:38 AM



Well Header							
API 05-123-24045		Business Unit DJ BASIN		District 15		Well Config VERTICAL	
Original KB Elevation (ft) 4,663		KB - GL / MSL (ftKB) 15.00		Spud Date 6/22/2008		P & A Date 7/16/2018	
Comment							
Directions To Well HWY 392 AND CR 59 N .4 E .7 S .5 INTO							
Congressional Location							
Quarter 3 SE	Quarter 4 SW	Section 13	Township 6	Twnshp N/S Dir N	Range 64	Range E/W Dir W	
Bottom Hole Location							
North-South Distance (ft)		From N or S Line		East-West Distance (ft)		From E or W Line	
Plug Back Total Depths							
Date	Depth (ftKB)	Method			Com		
6/26/2008	6,936.0	TAG			FLOAT SHOE W/ BAFFLE		
7/16/2008	6,916.0	CASED HOLE LOG			DEPTH LOGGER ON CBL		
11/13/2008	6,907.0	TAG			CLEAN OUT TO LAND TUBING		
2/23/2015	6,877.0	TBG TAG			81 FT OF RAT HOLE		
Wellbore Sections							
Section Des		Size (in)		Act Top, MD (ftKB)		Act Btm, MD (ftKB)	
SURFACE		12 1/4		15		465	
PRODUCTION		7 7/8		465		6,975	
Zone Statuses							
Zone Name	Status Date	Status	Fluid Type	Job	Prod Method		
CODELL	7/28/2008	PR		DRILLING/CO...			
CODELL	7/16/2018	P&A		ABANDON WE...			
NIOBRARA	7/28/2008	PR		DRILLING/CO...			
NIOBRARA	7/16/2018	P&A		ABANDON WE...			
Casing Strings							
Surface, 453.0ftKB							
Casing Description	Run Date	OD (in)	Wt/Len (l...	Grade	Top, MD (ft...	MD (ftKB)	
Surface	6/23/2008	8 5/8	24.00		15.0	453.0	
Production, 6,950.0ftKB							
Casing Description	Run Date	OD (in)	Wt/Len (l...	Grade	Top, MD (ft...	MD (ftKB)	
Production	6/26/2008	4 1/2	11.60	M-80	15.0	6,950.0	
Cement							
Description				Top Depth (ftKB)		Bottom Depth (ftKB)	
SURFACE CASING CEMENT				15.0		453.0	
Description				Top Depth (ftKB)		Bottom Depth (ftKB)	
PRODUCTION CASING CEMENT				50.0		6,950.0	
Description				Top Depth (ftKB)		Bottom Depth (ftKB)	
Balance Plug				2,000.0		2,500.0	
Description				Top Depth (ftKB)		Bottom Depth (ftKB)	
Balance Plug				15.0		653.0	
Description				Top Depth (ftKB)		Bottom Depth (ftKB)	
PA Plug				6,095.0		6,450.0	
Description				Top Depth (ftKB)		Bottom Depth (ftKB)	
PA Plug				1,970.0		2,500.0	
Description				Top Depth (ftKB)		Bottom Depth (ftKB)	
PA Plug				15.0		655.0	
Tubing Strings							
Tubing Description	Run Date	String...	ID (in)	Wt (lb/ft)	Grade	Len (ft)	Set De...
Tubing	11/13/2008	2 3/8				6,747.00	
Tubing Components							
Item Des	OD (in)	Wt (lb/ft)	Grade	Jts	Len (ft)	Btm (ftKB)	Btm (TVD) (ftKB)
Tubing	2 3/8			218	6,745.40	6,760.4	
Seal Nipple	2 3/8			1	1.10	6,761.5	
Notched collar	2 3/8			1	0.50	6,762.0	
Tubing Description	Run Date	String...	ID (in)	Wt (lb/ft)	Grade	Len (ft)	Set De...
Tubing - Production	2/25/2015	2 3/8	2.00	4.70	J-55	6,751.31	
Tubing Components							
Item Des	OD (in)	Wt (lb/ft)	Grade	Jts	Len (ft)	Btm (ftKB)	Btm (TVD) (ftKB)
EUE 8rd Tubing	2 3/8	4.70	J-55	218	6,749.66	6,764.7	

Well Name: LAPP 13-34

VERTICAL - ORIGINAL HOLE, 8/7/2018 8:49:38 AM



Tubing Components

Item Des	OD (in)	Wt (lb/ft)	Grade	Jts	Len (ft)	Btm (ftKB)	Btm (TVD) (ftKB)
Pump Seating Nipple	2 3/8	0.00	X	1	1.10	6,765.8	
Notched collar	2 3/8	0.00	X	1	0.55	6,766.3	

Other In Hole

Run Date	Des	OD (in)	Top (ftKB)	Btm (ftKB)
2/24/2015	Cast Iron Bridge Plug w/ 20 SX Cement	3.99	6,445.0	6,450.0
7/13/2018	Cast Iron Bridge Plug	3.99	6,450.0	6,452.0

Logs

Date	Type	Top, MD (ftKB)	Btm, MD (ftKB)
6/26/2008	COMPENSATED DENSITY	3,500.0	6,956.0
6/26/2008	INDUCTION	453.0	6,976.0
7/16/2008	CBL/CCL/GR	50.0	6,914.0
12/16/2013	GYRO	15.0	6,750.0

Perforation Data

Linked Zone	Bnch/St g	Sum of Entered Shot Total	Top (ftKB)	Btm (ftKB)	Date
NIOBRARA, ORIGINAL HOLE	A	30	6,500.00	6,515.00	7/23/2008
NIOBRARA, ORIGINAL HOLE	B	88	6,606.00	6,628.00	7/23/2008
CODELL, ORIGINAL HOLE		48	6,784.00	6,796.00	7/12/2008
Total (Sum)		166			

Stimulation Intervals

Start Date 7/23/2008	Primary Job Type DRILLING/COMPLETION - ORIGINAL	
Technical Result	Tech Result Details	Tech Result Note
Comment		
Start Date 7/23/2008	Primary Job Type DRILLING/COMPLETION - ORIGINAL	
Technical Result	Tech Result Details	Tech Result Note
Comment		