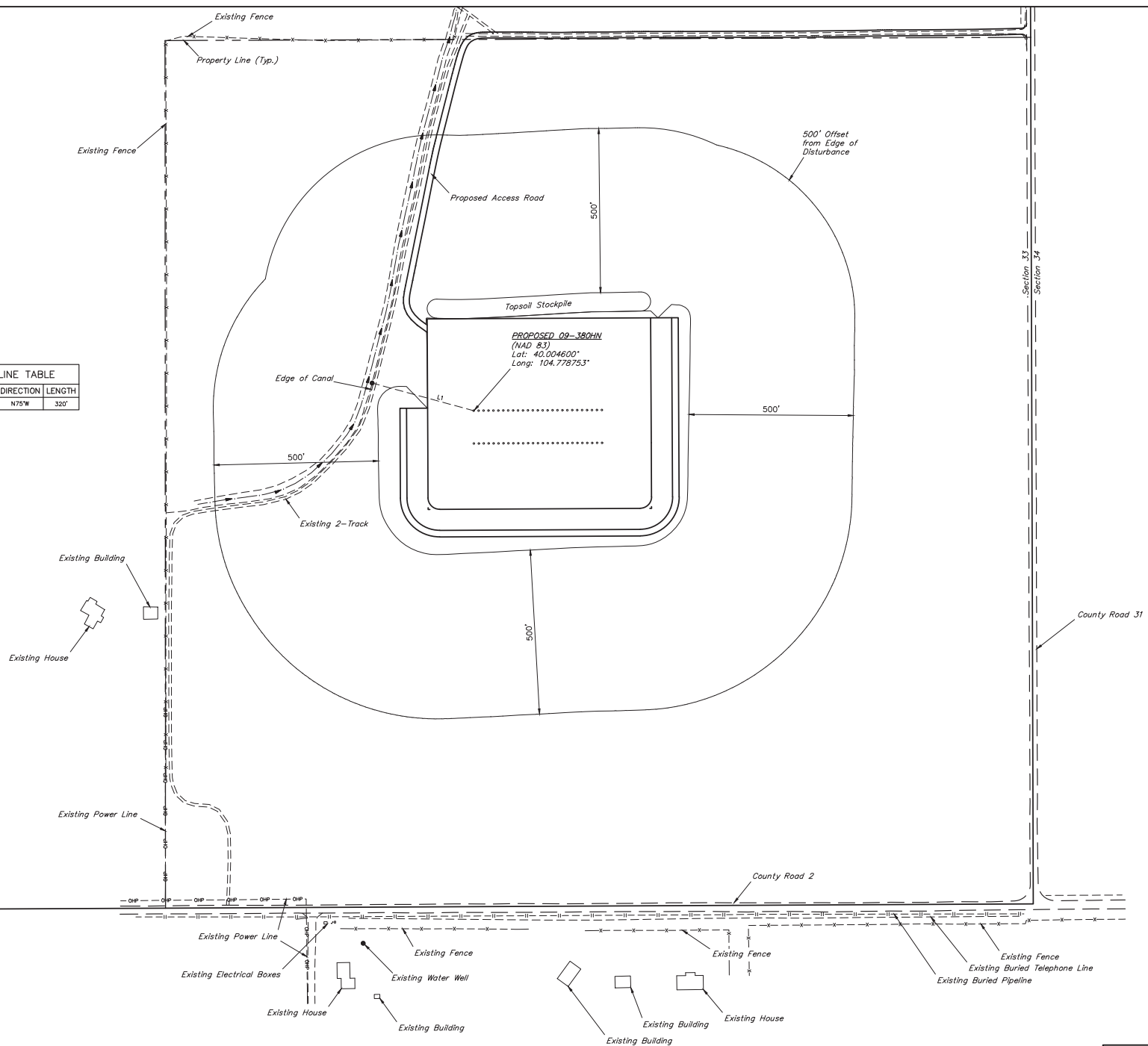


| LINE TABLE |           |        |
|------------|-----------|--------|
| LINE       | DIRECTION | LENGTH |
| L1         | N75°W     | 320'   |



T1N  
T1S

Section 33  
Section 4

REV: 3 12-01-17 K.B. (WELL ADD & NAME CHANGE)

GREAT WESTERN OPERATING COMPANY

OTTESEN LE PAD  
N 1/2 SE 1/4, SECTION 33, T1N, R66W, 6th P.M.  
WELD COUNTY, COLORADO

|                  |             |           |           |
|------------------|-------------|-----------|-----------|
| SURVEYED BY      | GREG WEIMER | 11-03-17  | SCALE     |
| DRAWN BY         | C.E.        | 11-11-15  | 1" = 200' |
| LOCATION DRAWING |             | FIGURE #5 |           |

NOTES:



UELS, LLC  
Corporate Office \* 85 South 280 East  
Vernal, UT 84078 \* (435) 789-1017