

LEGEND:

— TRUCK ROUTE



GREAT WESTERN OPERATING COMPANY

OTTESEN LE PAD  
N 1/2 SE 1/4, SECTION 33, T1N, R66W, 6th P.M.  
WELD COUNTY, COLORADO

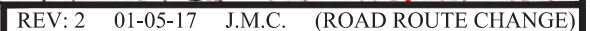
UELS, LLC  
Corporate Office \* 85 South 200 East  
Vernal, UT 84078 \* (435) 789-1017



SURVEYED BY	D.N., C.M.	06-30-16	SCALE
DRAWN BY	J.L.G.	12-08-17	1 : 12,000

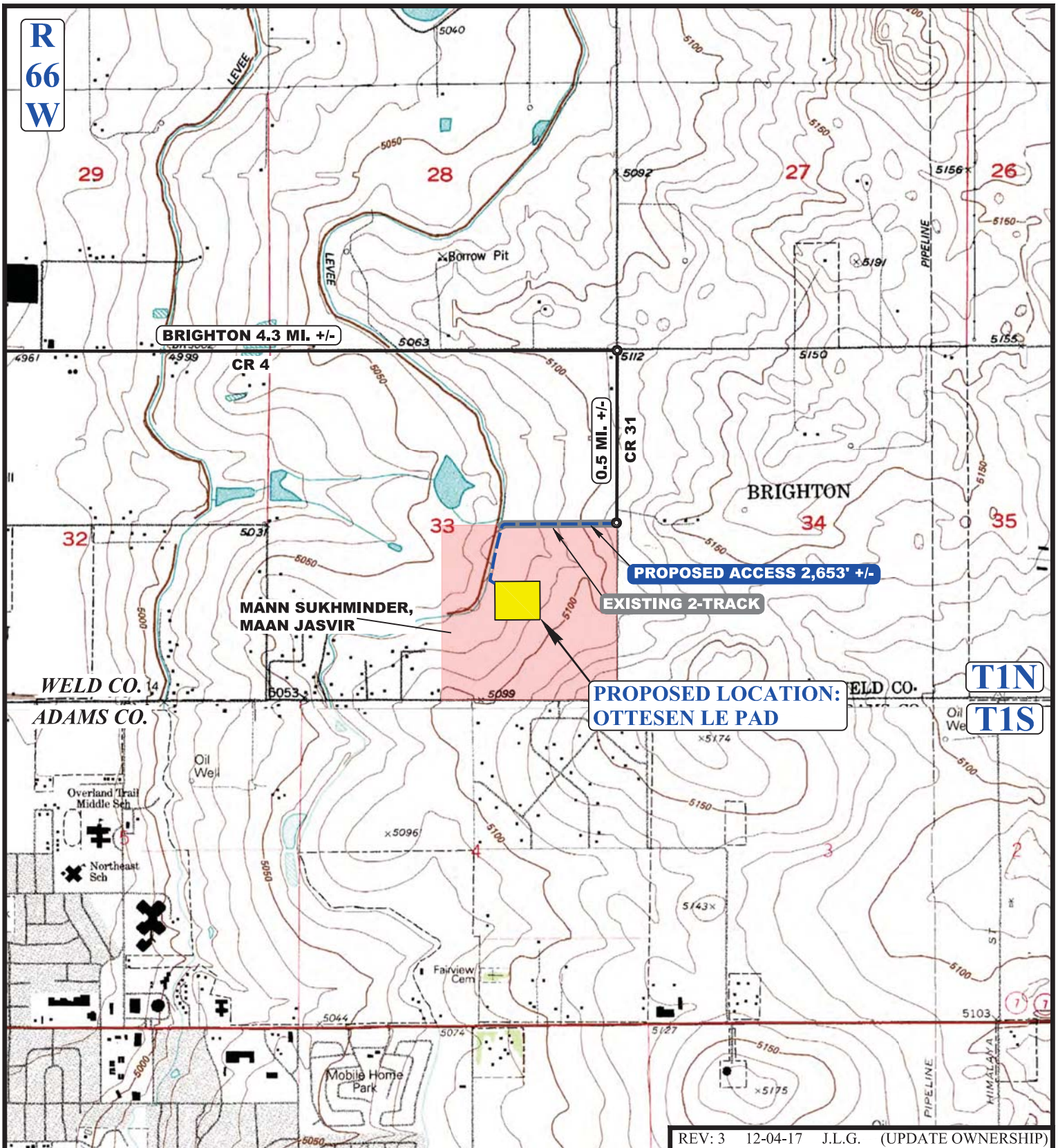
TRUCK ROUTE MAP





**UELS, LLC**  
Corporate Office \* 85 South 200 East  
Vernal, UT 84078 \* (435) 789-1017





NOTE: PARCEL DATA SHOWN HAS BEEN OBTAINED FROM VARIOUS SOURCES AND SHOULD BE USED FOR MAPPING, GRAPHIC AND PLANNING PURPOSES ONLY. NO WARRANTY IS MADE BY UINAH ENGINEERING AND LAND SURVEYING (UELS) FOR ACCURACY OF THE PARCEL DATA.

#### LEGEND:

- EXISTING ROAD
- PROPOSED ROAD
- EXISTING 2-TRACK



#### GREAT WESTERN OPERATING COMPANY

**OTTESEN LE PAD**  
**N 1/2 SE 1/4, SECTION 33, T1N, R66W, 6th P.M.**  
**WELD COUNTY, COLORADO**

SURVEYED BY	D.N., C.M.	06-30-16	SCALE
DRAWN BY	J.L.G.	11-12-15	1 : 24,000
<b>ACCESS ROAD MAP</b>			<b>TOPO B</b>



**UELS, LLC**  
 Corporate Office \* 85 South 200 East  
 Vernal, UT 84078 \* (435) 789-1017