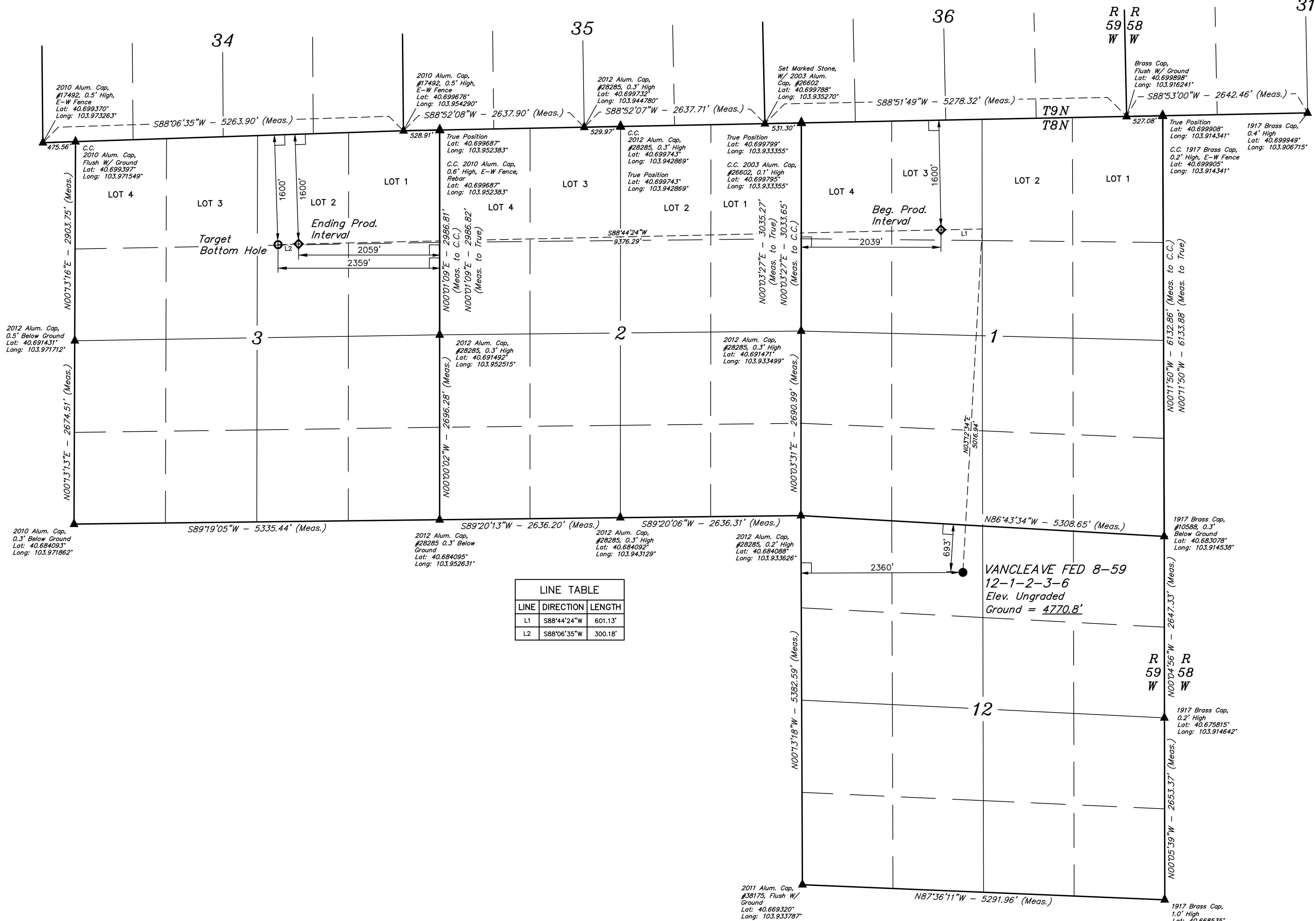
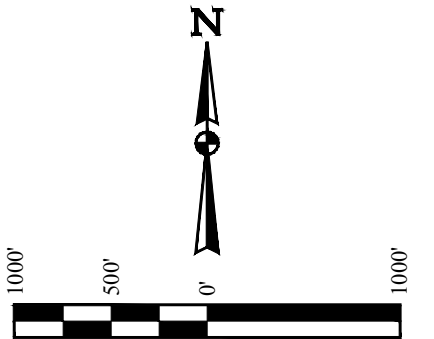


T8N, R59W, 6th P.M.

BISON OIL & GAS II

VANCLEAVE FED 8-59 12-1-2-3-6
NE 1/4 NW 1/4, SECTION 12, T8N, R59W, 6th P.M.
WELD COUNTY, COLORADO

BASIS OF BEARINGS
TRANSVERSE MERCATOR PROJECTION WITH
A CENTRAL MERIDIAN OF W105°00'00".
BASIS OF ELEVATION
OPUS SOLUTION GENERATED NAVD 88



LINE TABLE		
LINE	DIRECTION	LENGTH
L1	S88°44'24"W	601.13'
L2	S88°06'35"W	300.18'

PDOP = 1.4

SURFACE LOCATION 693' FNL 2360' FWL	BEG. PROD. INTERVAL 1600' FNL 2039' FWL	ENDING PROD. INTERVAL 1600' FNL 2059' FEL	TARGET BOTTOM HOLE 1600' FNL 2359' FEL
NAD 83 (SURFACE LOCATION) LATITUDE = 40°40'54.24" (40.681733°) LONGITUDE = 103°55'30.52" (103.925144°)	NAD 83 (BEG. PROD. INTERVAL) LATITUDE = 40°41'43.62" (40.695451°) LONGITUDE = 103°55'33.88" (103.926078°)	NAD 83 (ENDING PROD. INTERVAL) LATITUDE = 40°41'42.70" (40.695195°) LONGITUDE = 103°57'35.56" (103.959878°)	NAD 83 (TARGET BOTTOM HOLE) LATITUDE = 40°41'42.64" (40.695177°) LONGITUDE = 103°57'39.46" (103.960960°)
NAD 27 (SURFACE LOCATION) LATITUDE = 40°40'54.29" (40.681746°) LONGITUDE = 103°55'28.70" (103.924640°)	NAD 27 (BEG. PROD. INTERVAL) LATITUDE = 40°41'43.67" (40.695464°) LONGITUDE = 103°55'32.07" (103.925574°)	NAD 27 (ENDING PROD. INTERVAL) LATITUDE = 40°41'42.75" (40.695207°) LONGITUDE = 103°57'33.75" (103.959374°)	NAD 27 (TARGET BOTTOM HOLE) LATITUDE = 40°41'42.68" (40.695190°) LONGITUDE = 103°57'37.64" (103.960456°)
STATE PLANE NAD 83 (CO. NORTH) N: 1495077.16' E: 3436767.79'	STATE PLANE NAD 83 (CO. NORTH) N: 1500069.44' E: 3436420.19'	STATE PLANE NAD 83 (CO. NORTH) N: 1499811.51' E: 3427050.65'	STATE PLANE NAD 83 (CO. NORTH) N: 1499799.96' E: 3426750.79'
STATE PLANE NAD 27 (CO. NORTH) N: 495075.76' E: 2436919.27'	STATE PLANE NAD 27 (CO. NORTH) N: 500067.94' E: 2436571.58'	STATE PLANE NAD 27 (CO. NORTH) N: 499809.88' E: 2427201.81'	STATE PLANE NAD 27 (CO. NORTH) N: 499798.32' E: 2426901.95'

LEGEND:

- 90° SYMBOL
- PROPOSED WELLHEAD.
- PRODUCTION INTERVAL.
- TARGET BOTTOM HOLE.
- SECTION CORNERS LOCATED. (NAD 83)
- SECTION CORNERS RE-ESTABLISHED. (Not Set on Ground.) (NAD 83)

CERTIFICATION
THIS IS TO CERTIFY THAT THE ABOVE DESCRIBED SURVEY WAS MADE IN ACCORDANCE WITH THE NOTES OF ACTUAL SURVEYS MADE BY ME OR UNDER MY SUPERVISION, AND THAT THE SAME ARE TRUE AND CORRECT TO THE BEST OF MY KNOWLEDGE AND BELIEF.

REGISTERED LAND SURVEYOR
REGISTRATION NO. 28285
STATE OF COLORADO
JAMES FRESHWATER, N.W.

UINTAH
ENGINEERING & LAND SURVEYING

UELS, LLC
Corporate Office * 85 South 200 East
Vernal, UT 84078 * (435) 789-1017

SURVEYED BY JAMES FRESHWATER, N.W. 07-11-18 SCALE
DRAWN BY C. IVIE 07-19-18 1" = 1000'
WELL LOCATION PLAT