

SECTION 26, T6N, R66W

N. 1/4 COR.
SEC. 26, T6N, R66W
FOUND 2 1/2" ALUM. CAP
L.S. NO. 23501
LAT: 40.466583
LON: -104.744575

MATCH LINE
SEE SHEET 1B

WELLBORE
CONTINUES INTO
SECTION 23

NW. COR.
SEC. 26, T6N, R66W
SET 2 1/2" ALUM. CAP
P.L.S. NO. 38230
LAT: 40.466619
LON: -104.754107

S 89°48'14" W
1326.28' (M)

S 89°47'56" W
1326.10' (M)

S 89°29'20" W
1335.90' (M)

S 89°28'57" W
1335.88' (M)

NE COR.
SEC. 26, T6N, R66W
FOUND 2 1/2" ALUM. CAP
W.C. 1505' SOUTH OF
CORNER POSITION
L.S. NO. 38175
LAT: 40.466586
LON: -104.734972

W. 1/16 COR.
SEC. 23 & SEC. 26, T6N, R66W
SET 3 1/4" ALUM. CAP
W.C. 55' NW. AND 80' NE.
OF CORNER POSITION
P.L.S. NO. 38230
LAT: 40.466601
LON: -104.749341

E. 1/16 COR.
SEC. 23 & SEC. 26, T6N, R66W
FOUND 3 1/4" ALUM. CAP
L.S. NO. 22098
LAT: 40.466584
LON: -104.739773

W. 1/4 COR.
SEC. 26, T6N, R66W
FOUND 2 1/2" ALUM. CAP
L.S. NO. 23501
LAT: 40.459387
LON: -104.754117

CW. 1/16 COR.
SEC. 26, T6N, R66W
FOUND 3 1/4" ALUM. CAP
L.S. NO. 4392
LAT: 40.459376
LON: -104.749298

26

S 89°41'20" W
1340.98' (M)

S 89°40'46" W
1340.34' (M)

S 89°37'43" W
1343.32' (M)

S 89°37'47" W
1343.26' (M)

E. 1/4 COR.
SEC. 26, T6N, R66W
FOUND 3 1/4" ALUM. CAP
P.L.S. NO. 10855
LAT: 40.459350
LON: -104.734827

CENTER 1/4 COR.
SEC. 26, T6N, R66W
FOUND 3 1/4" ALUM. CAP
L.S. NO. 4392
LAT: 40.459365
LON: -104.744482

TOP OF
PRODUCTION (TYP.)

CE. 1/16 COR.
SEC. 26, T6N, R66W
FOUND 2 1/2" ALUM. CAP
L.S. NO. 30462
LAT: 40.459358
LON: -104.739654

S. 1/16 COR.
SEC. 26 & SEC. 27
T6N, R66W
FOUND 3 1/4" ALUM. CAP
L.S. NO. 38106
LAT: 40.455771
LON: -104.754236

N 00°57'29" E
1317.95' (M)
N 00°58'08" E
1317.75' (M)

N 01°02'30" W
2628.58' (M)

N 01°01'28" W
2624.19' (M)

SE. COR.
SEC. 26, T6N, R66W
FOUND 2 1/2" ALUM. CAP
ILLEGIBLE
LAT: 40.452147
LON: -104.734740

SW. COR.
SEC. 26, T6N, R66W
FOUND 3 1/4" ALUM. CAP
P.L.S. NO. 10855
LAT: 40.452154
LON: -104.754356

MATCH LINE
SEE SHEET 1F

S 89°32'46" W 2773.48' (M)

S. 1/4 COR.
SEC. 26, T6N, R66W
FOUND 3 1/4" ALUM. CAP W.C.
105.59' N. OF CORNER POSITION
L.S. NO. 4392
LAT: 40.452150
LON: -104.744390

S 89°31'53" W
1342.94' (M)

S 89°32'24" W
1342.80' (M)

E. 1/16 COR.
SEC. 26 & SEC. 35, T6N, R66W
FOUND 2 1/2" ALUM. CAP
P.L.S. NO. 28285
LAT: 40.432149
LON: -104.739565

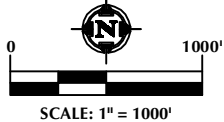
MATCH LINE
SEE SHEET 1D

WELLBORES
CONTINUE INTO
SECTION 25

WELLBORES CONTINUE
INTO SECTION 35

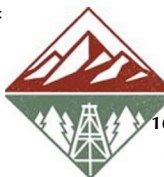
NOTES:

- ▲ INDICATES SECTION CORNER.
- INDICATES CALCULATED CORNER.
- BASIS OF BEARING DERIVED FROM COLORADO COORDINATE SYSTEM OF 1983 NORTH ZONE.
- ALL MEASURED DISTANCES ARE GRID. COMBINED SCALE FACTOR: .99974177 CALCULATED FROM THE E. 1/4 CORNER OF SECTION 26, T6N, R66W.
- WELL FOOTAGES ARE MEASURED AT RIGHT ANGLES TO THE SECTION LINES.



WELL PAD - CHALK-SEELEY FEDERAL 7-26 PAD

MULTI-WELL PLAN
SEELEY FEDERAL 38C-19-L, SEELEY FEDERAL 38N-19C-L, SEELEY FEDERAL 26N-30B-L, SEELEY FEDERAL 26C-30-L,
SEELEY FEDERAL 1N-30C-L, SEELEY FEDERAL 1N-30A-L, SEELEY FEDERAL 1N-30B-L, SEELEY FEDERAL 41C-30-L,
SEELEY FEDERAL 41N-30C-L, SEELEY FEDERAL 8N-30B-L, SEELEY FEDERAL 9C-30-L, SEELEY FEDERAL 9N-30C-L,
SEELEY FEDERAL 40C-30-L, SEELEY FEDERAL 40N-30B-L, SEELEY FEDERAL 40N-30C-L, SEELEY FEDERAL 9C-30-L,
SEELEY FEDERAL 9N-30B-L, SEELEY FEDERAL 9N-30C-L, SEELEY FEDERAL 39N-30A-L, SEELEY FEDERAL 39C-30-L,
SEELEY FEDERAL 39N-30B-L, SEELEY FEDERAL 16C-30-L, SEELEY FEDERAL 16N-30C-L, SEELEY FEDERAL 16N-30B-L,
SEELEY FEDERAL 30C-30-L, SEELEY FEDERAL 30N-30C-L, CHALK 36N-2C-XR, CHALK 36C-2-XR,
CHALK 15N-2B-XR, CHALK 15C-2-XR, CHALK 37N-2C-XR, CHALK 37N-2A-XR, CHALK 20C-35-M,
CHALK 20N-35B-M, CHALK 9N-35C-M, CHALK 9C-35-M, CHALK 39N-35A-M & CHALK 39N-35C-M
LOCATED IN SECTIONS 23, 24, 25 & 26
T6N, R66W, 6TH P.M. &
LOCATED IN SECTION 2
T5N, R66W, 6TH P.M. &
LOCATED IN SECTIONS 19 & 30
T6N, R65W, 6TH P.M.
WELD COUNTY, COLORADO



SRC ENERGY
1675 Broadway, Suite 2600
Denver, Colorado 80202

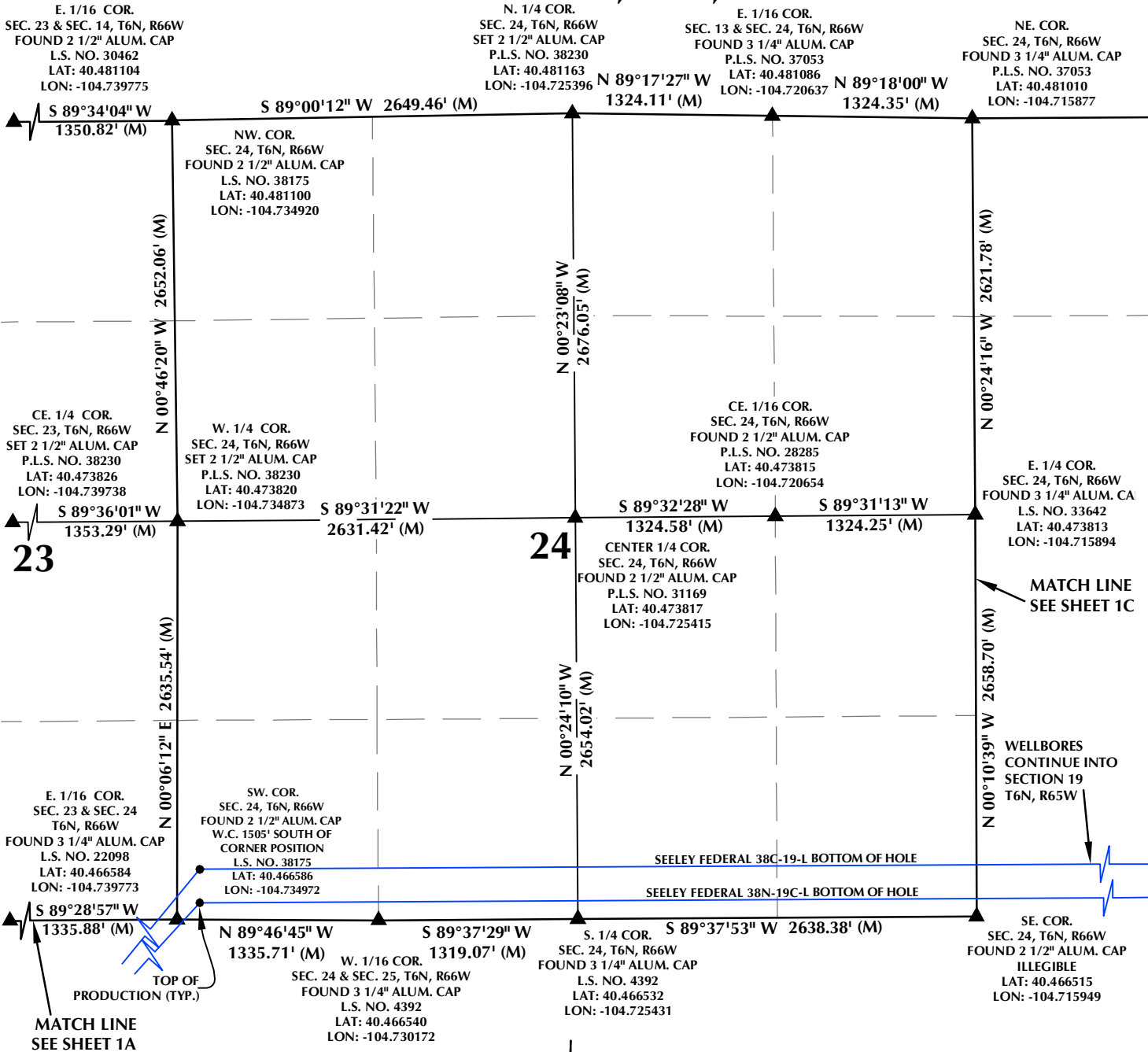


CONSULTING, LLC

SHERIDAN OFFICE 1095 Saberton Avenue
Sheridan, Wyoming 82801
Phone 307-674-0609
LOVELAND OFFICE 1635 Foxtrail Drive, Suite 204
Loveland, Colorado 80538
Phone 970-776-4331

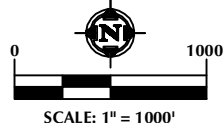
DRAFTED BY:	LMO	CHECKED BY:	JRS	SHEET NO:
DATE DRAFTED:	9/26/17	DATE SURVEYED:	2/12/18	1A
REVISED:	6/5/18	FILE NAME:	17-41	1A OF 3

SECTION 23 & 24, T6N, R66W



NOTES:

- ▲ INDICATES SECTION CORNER.
- INDICATES CALCULATED CORNER.
- BASIS OF BEARING DERIVED FROM COLORADO COORDINATE SYSTEM OF 1983 NORTH ZONE.
- ALL MEASURED DISTANCES ARE GRID.
COMBINED SCALE FACTOR: .99974177 CALCULATED FROM THE E. 1/4 CORNER OF SECTION 26, T6N, R66W.
- WELL FOOTAGES ARE MEASURED AT RIGHT ANGLES TO THE SECTION LINES.

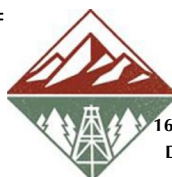


WELL PAD - CHALK-SEELEY FEDERAL 7-26 PAD

MULTI-WELL PLAN

SEELEY FEDERAL 38C-19-L, SEELEY FEDERAL 38N-19C-L, SEELEY FEDERAL 26N-30B-L, SEELEY FEDERAL 26C-30-L, SEELEY FEDERAL 1N-30C-L, SEELEY FEDERAL 1N-30A-L, SEELEY FEDERAL 1N-30B-L, SEELEY FEDERAL 41C-30-L, SEELEY FEDERAL 41N-30C-L, SEELEY FEDERAL 8N-30B-L, SEELEY FEDERAL 8C-30-L, SEELEY FEDERAL 9N-30C-L, SEELEY FEDERAL 40C-30-L, SEELEY FEDERAL 40N-30B-L, SEELEY FEDERAL 40N-30C-L, SEELEY FEDERAL 9C-30-L, SEELEY FEDERAL 9N-30B-L, SEELEY FEDERAL 9N-30C-L, SEELEY FEDERAL 39N-30A-L, SEELEY FEDERAL 39C-30-L, SEELEY FEDERAL 39N-30B-L, SEELEY FEDERAL 16C-30-L, SEELEY FEDERAL 16N-30C-L, SEELEY FEDERAL 16N-30B-L, SEELEY FEDERAL 38C-30-L, SEELEY FEDERAL 38N-30C-L, CHALK 36N-2C-XR, CHALK 36C-2-XR, CHALK 15N-2B-XR, CHALK 15C-2-XR, CHALK 37N-2C-XR, CHALK 37N-2A-XR, CHALK 20C-35-M, CHALK 20N-35B-M, CHALK 9N-35C-M, CHALK 9C-35-M, CHALK 39N-35A-M & CHALK 39N-35C-M

LOCATED IN SECTIONS 23, 24, 25 & 26
T6N, R66W, 6TH P.M. &
LOCATED IN SECTION 2
T5N, R66W, 6TH P.M. &
LOCATED IN SECTIONS 19 & 30
T6N, R65W, 6TH P.M.
WELD COUNTY, COLORADO



SRC ENERGY
1675 Broadway, Suite 2600
Denver, Colorado 80202



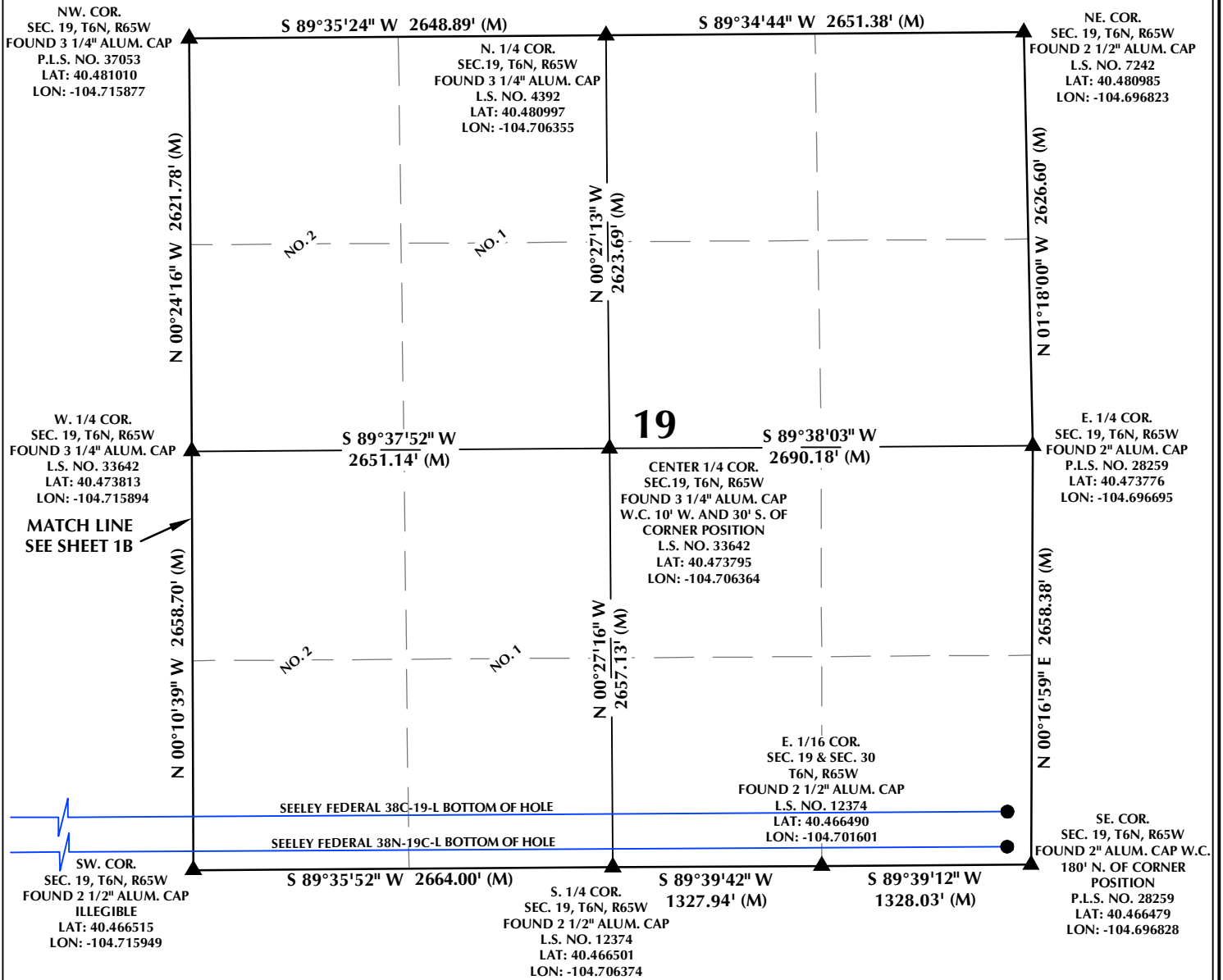
CONSULTING, LLC

SHERIDAN OFFICE
1095 Saberton Avenue
Sheridan, Wyoming 82801
Phone 307-674-0609

LOVELAND OFFICE
1635 Foxtrail Drive, Suite 204
Loveland, Colorado 80538
Phone 970-776-4331

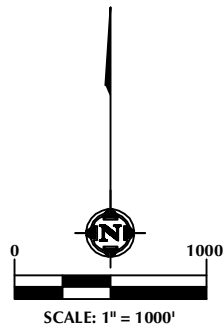
DRAFTED BY:	LMO	CHECKED BY:	JRS	SHEET NO:
DATE DRAFTED:	9/26/17	DATE SURVEYED:	2/12/18	1B
REVISED:	2/28/18	FILE NAME:	17-41	1B OF 3

SECTION 19, T6N, R65W



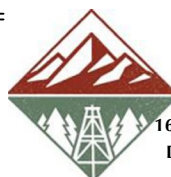
NOTES:

- ▲ INDICATES SECTION CORNER
- INDICATES CALCULATED CORNER
- BASIS OF BEARING DERIVED FROM COLORADO COORDINATE SYSTEM OF 1983 NORTH ZONE.
- ALL MEASURED DISTANCES ARE GRID. COMBINED SCALE FACTOR: .99974177 CALCULATED FROM THE E. 1/4 CORNER OF SECTION 26, T6N, R66W
- WELL FOOTAGES ARE MEASURED AT RIGHT ANGLES TO THE SECTION LINES.
- NO. 1 & NO. 2 AS SHOWN HEREON ARE GOVERNMENT LOTS 1 & 2 PER THE ORIGINAL GLO SURVEY

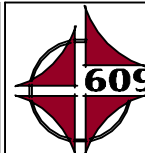


WELL PAD - CHALK-SEELEY FEDERAL 7-26 PAD

MULTI-WELL PLAN
SEELEY FEDERAL 38C-19-L, SEELEY FEDERAL 38N-19C-L, SEELEY FEDERAL 26N-30B-L, SEELEY FEDERAL 26C-30-L, SEELEY FEDERAL 1N-30C-L, SEELEY FEDERAL 1N-30A-L, SEELEY FEDERAL 1N-30B-L, SEELEY FEDERAL 41C-30-L, SEELEY FEDERAL 41N-30C-L, SEELEY FEDERAL 8N-30B-L, SEELEY FEDERAL 8C-30-L, SEELEY FEDERAL 9N-30C-L, SEELEY FEDERAL 40C-30-L, SEELEY FEDERAL 40N-30B-L, SEELEY FEDERAL 40N-30C-L, SEELEY FEDERAL 9C-30-L, SEELEY FEDERAL 9N-30B-L, SEELEY FEDERAL 9N-30C-L, SEELEY FEDERAL 39N-30A-L, SEELEY FEDERAL 39C-30-L, SEELEY FEDERAL 39N-30B-L, SEELEY FEDERAL 16C-30-L, SEELEY FEDERAL 16N-30C-L, SEELEY FEDERAL 16N-30B-L, SEELEY FEDERAL 38C-30-L, SEELEY FEDERAL 38N-30C-L, CHALK 36N-2C-XR, CHALK 36C-2-XR, CHALK 15N-2B-XR, CHALK 15C-2-XR, CHALK 37N-2C-XR, CHALK 37N-2A-XR, CHALK 20C-35-M, CHALK 20N-35B-M, CHALK 9N-35C-M, CHALK 9C-35-M, CHALK 39N-35A-M & CHALK 39N-35C-M
LOCATED IN SECTIONS 23, 24, 25 & 26
T6N, R66W, 6TH P.M. &
LOCATED IN SECTION 2
T5N, R66W, 6TH P.M. &
LOCATED IN SECTIONS 19 & 30
T6N, R65W, 6TH P.M.
WELD COUNTY, COLORADO



SRC ENERGY
1675 Broadway, Suite 2600
Denver, Colorado 80202



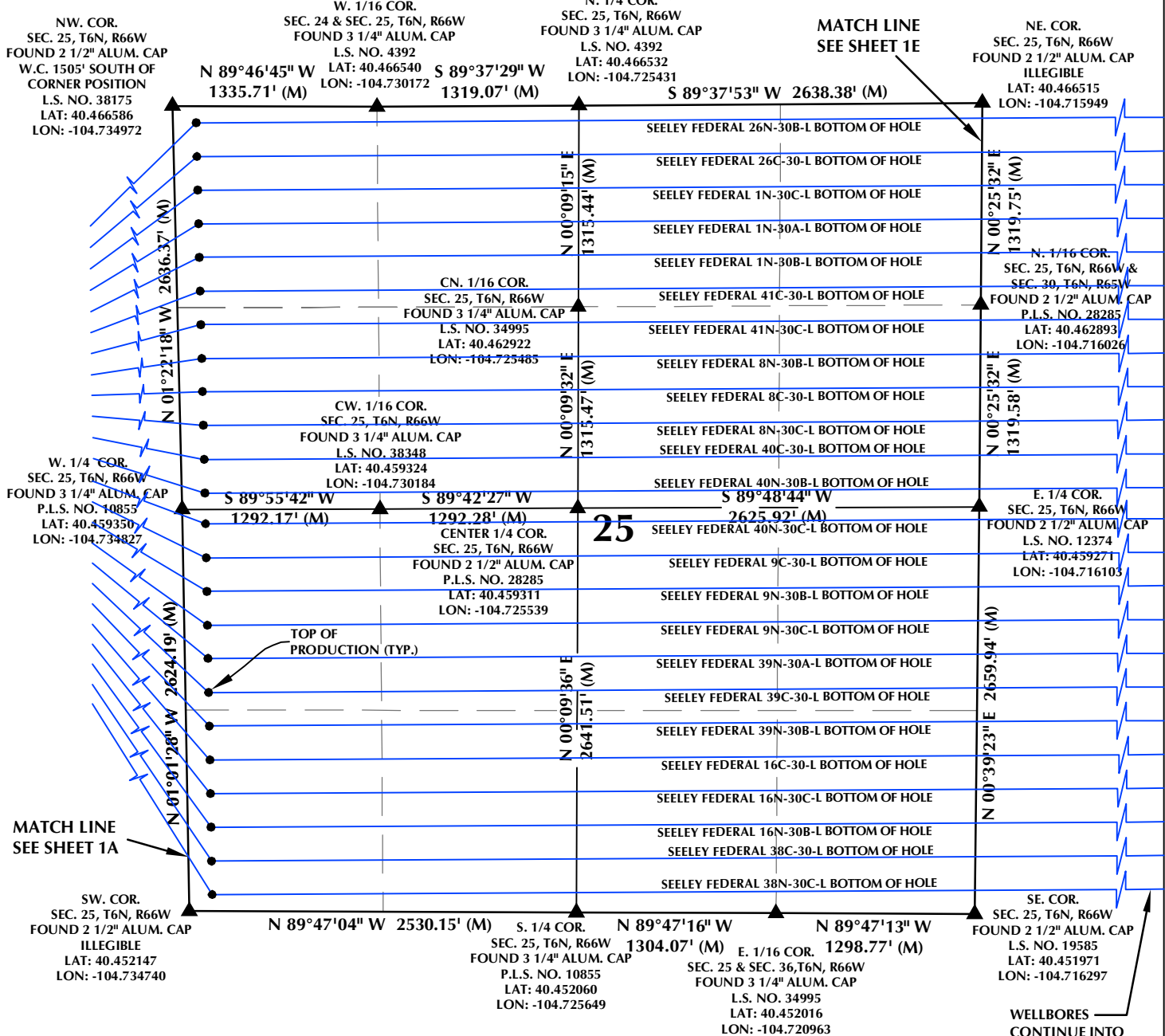
CONSULTING, LLC

SHERIDAN OFFICE
1095 Saberton Avenue
Sheridan, Wyoming 82801
Phone 307-674-0609

LOVELAND OFFICE
1635 Foxtrail Drive, Suite 204
Loveland, Colorado 80538
Phone 970-776-4331

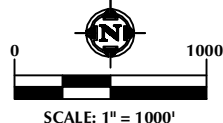
DRAFTED BY:	LMO	CHECKED BY:	JRS	SHEET NO:
DATE DRAFTED:	9/26/17	DATE SURVEYED:	2/12/18	1C
REVISED:	2/28/18	FILE NAME:	17-41	1C OF 3

SECTION 25, T6N, R66W



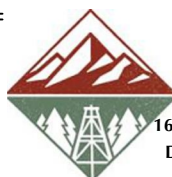
NOTES:

- ▲ INDICATES SECTION CORNER.
- INDICATES CALCULATED CORNER.
- BASIS OF BEARING DERIVED FROM COLORADO COORDINATE SYSTEM OF 1983 NORTH ZONE.
- ALL MEASURED DISTANCES ARE GRID. COMBINED SCALE FACTOR: .99974177 CALCULATED FROM THE E. 1/4 CORNER OF SECTION 26, T6N, R66W.
- WELL FOOTAGES ARE MEASURED AT RIGHT ANGLES TO THE SECTION LINES.



WELL PAD - CHALK-SEELEY FEDERAL 7-26 PAD

MULTI-WELL PLAN
SEELEY FEDERAL 38C-19-L, SEELEY FEDERAL 38N-19C-L, SEELEY FEDERAL 26N-30B-L, SEELEY FEDERAL 26C-30-L, SEELEY FEDERAL 1N-30C-L, SEELEY FEDERAL 1N-30A-L, SEELEY FEDERAL 1N-30B-L, SEELEY FEDERAL 41C-30-L, SEELEY FEDERAL 41N-30C-L, SEELEY FEDERAL 8N-30B-L, SEELEY FEDERAL 8C-30-L, SEELEY FEDERAL 8N-30C-L, SEELEY FEDERAL 40C-30-L, SEELEY FEDERAL 40N-30B-L, SEELEY FEDERAL 40N-30C-L, SEELEY FEDERAL 9C-30-L, SEELEY FEDERAL 9N-30B-L, SEELEY FEDERAL 9N-30C-L, SEELEY FEDERAL 39N-30A-L, SEELEY FEDERAL 39C-30-L, SEELEY FEDERAL 39N-30B-L, SEELEY FEDERAL 16C-30-L, SEELEY FEDERAL 16N-30C-L, SEELEY FEDERAL 16N-30B-L, SEELEY FEDERAL 38C-30-L, SEELEY FEDERAL 38N-30C-L, CHALK 36N-2C-XR, CHALK 36C-2-XR, CHALK 15N-2B-XR, CHALK 15C-2-XR, CHALK 37N-2C-XR, CHALK 37N-2A-XR, CHALK 20C-35-M, CHALK 20N-35B-M, CHALK 9N-35C-M, CHALK 9C-35-M, CHALK 39N-35A-M & CHALK 39N-35C-M
LOCATED IN SECTIONS 23, 24, 25 & 26
T6N, R66W, 6TH P.M. &
LOCATED IN SECTION 2
T5N, R66W, 6TH P.M. &
LOCATED IN SECTIONS 19 & 30
T6N, R65W, 6TH P.M.
WELD COUNTY, COLORADO



SRC ENERGY
1675 Broadway, Suite 2600
Denver, Colorado 80202



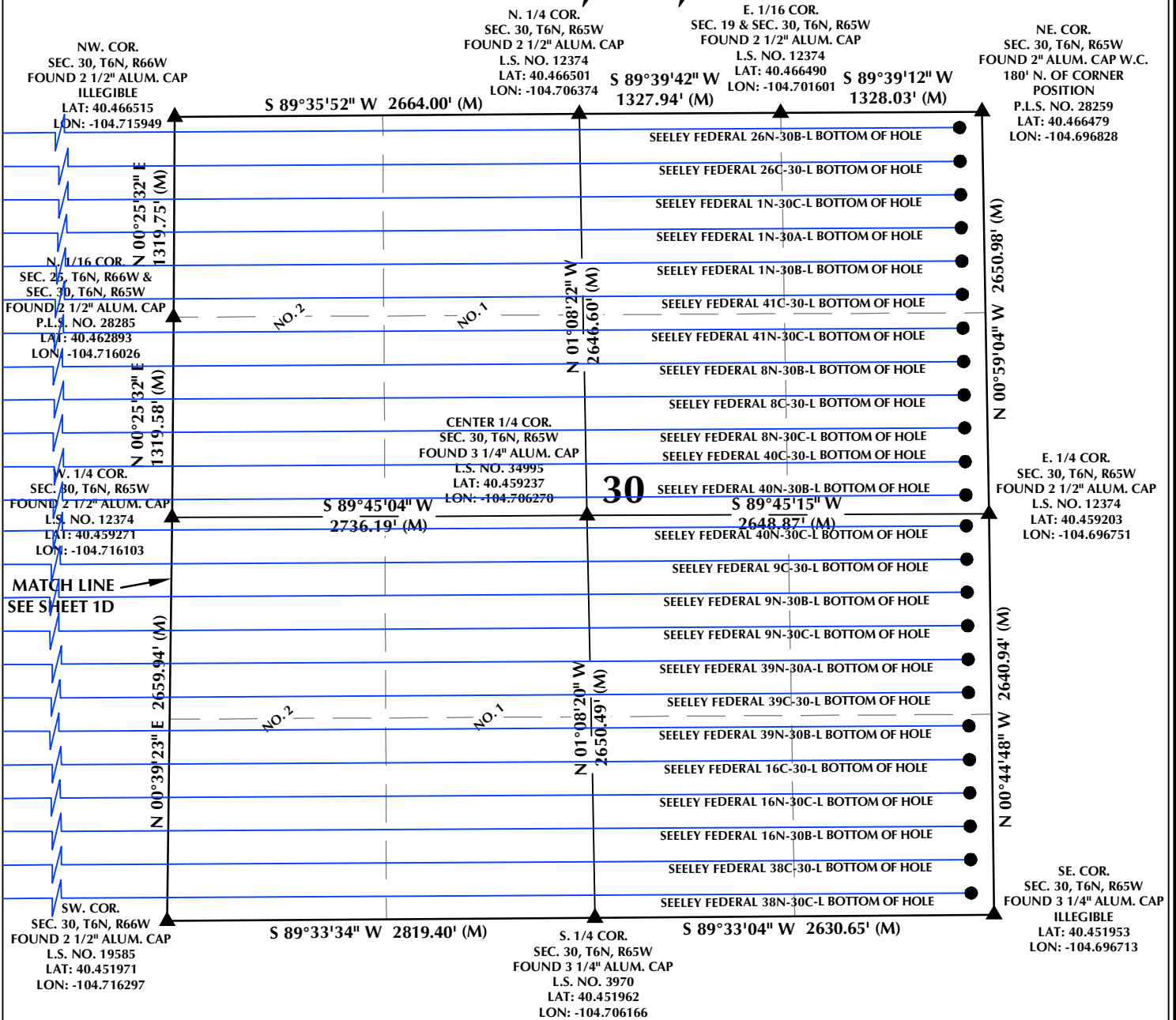
CONSULTING, LLC

SHERIDAN OFFICE
1095 Saberton Avenue
Sheridan, Wyoming 82801
Phone 307-674-0609

LOVELAND OFFICE
1635 Foxtrail Drive, Suite 204
Loveland, Colorado 80538
Phone 970-776-4331

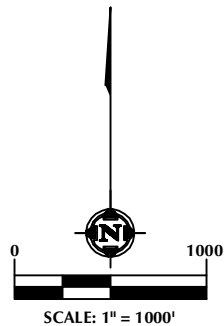
DRAFTED BY:	LMO	CHECKED BY:	JRS	SHEET NO:
DATE DRAFTED:	9/26/17	DATE SURVEYED:	2/12/18	1D
REVISED:	2/28/18	FILE NAME:	17-41	1D OF 3

SECTION 30, T6N, R65W



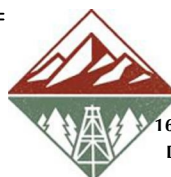
NOTES:

- ▲ INDICATES SECTION CORNER.
- INDICATES CALCULATED CORNER.
- BASIS OF BEARING DERIVED FROM COLORADO COORDINATE SYSTEM OF 1983 NORTH ZONE.
- ALL MEASURED DISTANCES ARE GRID. COMBINED SCALE FACTOR: .99974177 CALCULATED FROM THE E. 1/4 CORNER OF SECTION 26, T6N, R66W.
- WELL FOOTAGES ARE MEASURED AT RIGHT ANGLES TO THE SECTION LINES.
- NO. 1 & NO. 2 AS SHOWN HEREON ARE GOVERNMENT LOTS 1 & 2 PER THE ORIGINAL GLO SURVEY.



WELL PAD - CHALK-SEELEY FEDERAL 7-26 PAD

MULTI-WELL PLAN
SEELEY FEDERAL 38C-19-L, SEELEY FEDERAL 38N-19C-L, SEELEY FEDERAL 26N-30B-L, SEELEY FEDERAL 26C-30-L, SEELEY FEDERAL 1N-30C-L, SEELEY FEDERAL 1N-30A-L, SEELEY FEDERAL 1N-30B-L, SEELEY FEDERAL 41C-30-L, SEELEY FEDERAL 41N-30C-L, SEELEY FEDERAL 8N-30B-L, SEELEY FEDERAL 8C-30-L, SEELEY FEDERAL 8N-30C-L, SEELEY FEDERAL 40C-30-L, SEELEY FEDERAL 40N-30B-L, SEELEY FEDERAL 40N-30C-L, SEELEY FEDERAL 9C-30-L, SEELEY FEDERAL 9N-30B-L, SEELEY FEDERAL 9N-30C-L, SEELEY FEDERAL 39N-30A-L, SEELEY FEDERAL 39C-30-L, SEELEY FEDERAL 39N-30B-L, SEELEY FEDERAL 16C-30-L, SEELEY FEDERAL 16N-30C-L, SEELEY FEDERAL 16N-30B-L, SEELEY FEDERAL 38C-30-L, SEELEY FEDERAL 38N-30C-L, CHALK 36N-2C-XR, CHALK 36C-2-XR, CHALK 15N-2B-XR, CHALK 15C-2-XR, CHALK 37N-2C-XR, CHALK 37N-2A-XR, CHALK 20C-35-M, CHALK 20N-35B-M, CHALK 9N-35C-M, CHALK 9C-35-M, CHALK 39N-35A-M & CHALK 39N-35C-M
LOCATED IN SECTIONS 23, 24, 25 & 26
T6N, R65W, 6TH P.M. &
LOCATED IN SECTION 2
T5N, R66W, 6TH P.M. &
LOCATED IN SECTIONS 19 & 30
T6N, R65W, 6TH P.M.
WELD COUNTY, COLORADO



SRC ENERGY
1675 Broadway, Suite 2600
Denver, Colorado 80202



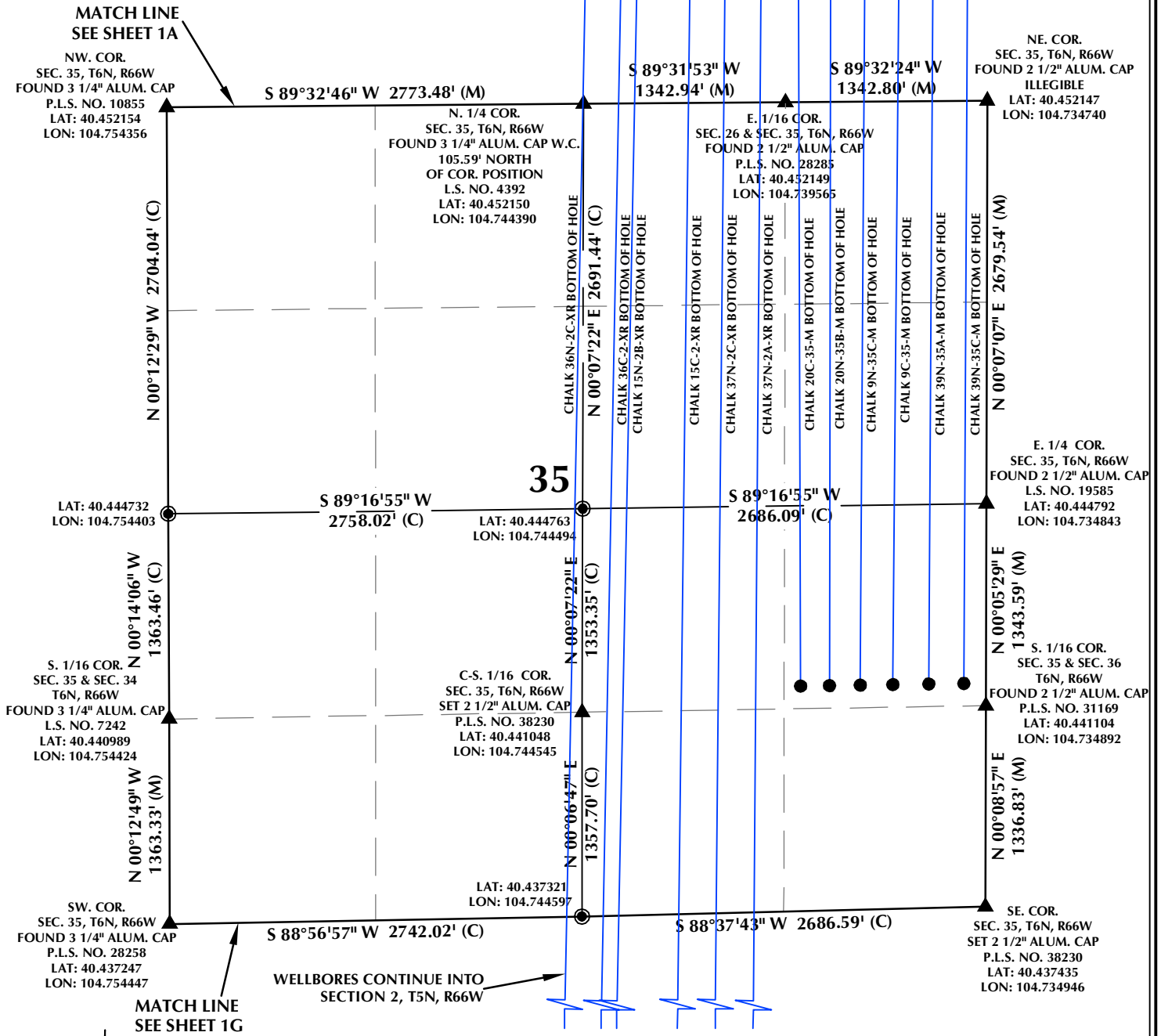
CONSULTING, LLC

SHERIDAN OFFICE
1095 Saberton Avenue
Sheridan, Wyoming 82801
Phone 307-674-0609

LOVELAND OFFICE
1635 Foxtrail Drive, Suite 204
Loveland, Colorado 80538
Phone 970-776-4331

DRAFTED BY:	LMO	CHECKED BY:	JRS	SHEET NO:
DATE DRAFTED:	9/26/17	DATE SURVEYED:	2/12/18	1E
REVISED:	2/28/18	FILE NAME:	17-41	1E OF 3

SECTION 35, T6N, R66W

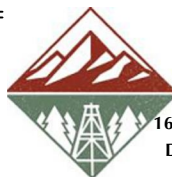


NOTES:

- ▲ INDICATES SECTION CORNER.
- INDICATES CALCULATED CORNER.
- BASIS OF BEARING DERIVED FROM COLORADO COORDINATE SYSTEM OF 1983 NORTH ZONE.
- ALL MEASURED DISTANCES ARE GRID. COMBINED SCALE FACTOR: .99974177 CALCULATED FROM THE E. 1/4 CORNER OF SECTION 26, T6N, R66W.
- WELL FOOTAGES ARE MEASURED AT RIGHT ANGLES TO THE SECTION LINES.

WELL PAD - CHALK-SEELEY FEDERAL 7-26 PAD

MULTI-WELL PLAN
SEELEY FEDERAL 38C-19-L, SEELEY FEDERAL 38N-19C-L, SEELEY FEDERAL 26N-30B-L, SEELEY FEDERAL 26C-30-L, SEELEY FEDERAL 1N-30C-L, SEELEY FEDERAL 1N-30A-L, SEELEY FEDERAL 1N-30B-L, SEELEY FEDERAL 41C-30-L, SEELEY FEDERAL 41N-30C-L, SEELEY FEDERAL 8N-30B-L, SEELEY FEDERAL 8C-30-L, SEELEY FEDERAL 8N-30C-L, SEELEY FEDERAL 40C-30-L, SEELEY FEDERAL 40N-30B-L, SEELEY FEDERAL 40N-30C-L, SEELEY FEDERAL 9C-30-L, SEELEY FEDERAL 9N-30B-L, SEELEY FEDERAL 9N-30C-L, SEELEY FEDERAL 39N-30A-L, SEELEY FEDERAL 39C-30-L, SEELEY FEDERAL 39N-30B-L, SEELEY FEDERAL 16C-30-L, SEELEY FEDERAL 16N-30C-L, SEELEY FEDERAL 16N-30B-L, SEELEY FEDERAL 30C-30-L, SEELEY FEDERAL 30N-30C-L, CHALK 36N-2C-XR, CHALK 36C-2-XR, CHALK 15N-2B-XR, CHALK 15C-2-XR, CHALK 37N-2C-XR, CHALK 37N-2A-XR, CHALK 20C-35-M, CHALK 20N-35B-M, CHALK 9N-35C-M, CHALK 9C-35-M, CHALK 39N-35A-M & CHALK 39N-35C-M
LOCATED IN SECTIONS 23, 24, 25 & 26
T6N, R66W, 6TH P.M. &
LOCATED IN SECTION 2
T5N, R66W, 6TH P.M. &
LOCATED IN SECTIONS 19 & 30
T6N, R65W, 6TH P.M.
WELD COUNTY, COLORADO



SRC ENERGY

1675 Broadway, Suite 2600
Denver, Colorado 80202



CONSULTING, LLC

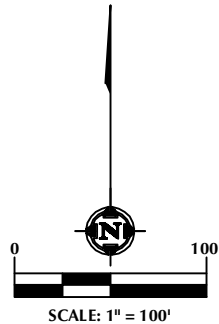
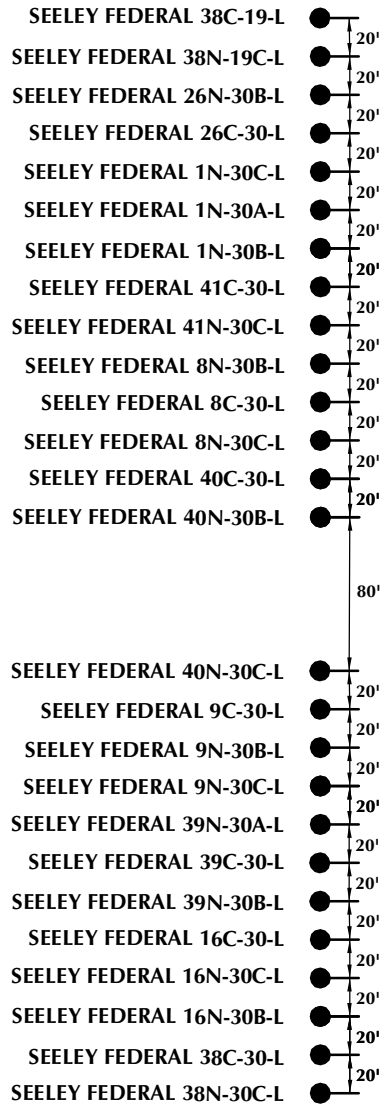
SHERIDAN OFFICE
1095 Saberton Avenue
Sheridan, Wyoming 82801
Phone 307-674-0609

LOVELAND OFFICE
1635 Foxtrail Drive, Suite 204
Loveland, Colorado 80538
Phone 970-776-4331

DRAFTED BY:	LMO	CHECKED BY:	JRS	SHEET NO:
DATE DRAFTED:	9/26/17	DATE SURVEYED:	2/12/18	1F
REVISED:	6/5/18	FILE NAME:	17-41	1F OF 3

C:\SYNERGY RESOURCES\2017\2017_41_CHALK_T6N_R66W_SEC_26\PLATS\SEELEY 7-26 MW PLAN.dwg, 6/5/2018 3:20:14 PM, jake

CHALK-SEELEY FEDERAL 7-26 PAD



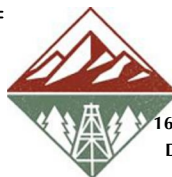
NOTES:

- ▲ INDICATES SECTION CORNER
- INDICATES CALCULATED CORNER
- BASIS OF BEARING DERIVED FROM COLORADO COORDINATE SYSTEM OF 1983 NORTH ZONE.
- ALL MEASURED DISTANCES ARE GRID.
COMBINED SCALE FACTOR: .99974177 CALCULATED FROM THE E. 1/4 CORNER OF SECTION 26, T6N, R66W
- WELL FOOTAGES ARE MEASURED AT RIGHT ANGLES TO THE SECTION LINES.

WELL PAD - CHALK-SEELEY FEDERAL 7-26 PAD

MULTI-WELL PLAN

SEELEY FEDERAL 38C-19-L, SEELEY FEDERAL 38N-19C-L, SEELEY FEDERAL 26N-30B-L, SEELEY FEDERAL 26C-30-L, SEELEY FEDERAL 1N-30C-L, SEELEY FEDERAL 1N-30A-L, SEELEY FEDERAL 1N-30B-L, SEELEY FEDERAL 41C-30-L, SEELEY FEDERAL 41N-30C-L, SEELEY FEDERAL 8N-30B-L, SEELEY FEDERAL 8C-30-L, SEELEY FEDERAL 8N-30C-L, SEELEY FEDERAL 40C-30-L, SEELEY FEDERAL 40N-30B-L, SEELEY FEDERAL 40N-30C-L, SEELEY FEDERAL 9C-30-L, SEELEY FEDERAL 9N-30B-L, SEELEY FEDERAL 9N-30C-L, SEELEY FEDERAL 39N-30A-L, SEELEY FEDERAL 39C-30-L, SEELEY FEDERAL 39N-30B-L, SEELEY FEDERAL 16C-30-L, SEELEY FEDERAL 16N-30C-L, SEELEY FEDERAL 16N-30B-L, SEELEY FEDERAL 38C-30-L, SEELEY FEDERAL 38N-30C-L, CHALK 36N-2C-XR, CHALK 36C-2-XR, CHALK 15N-2B-XR, CHALK 15C-2-XR, CHALK 37N-2C-XR, CHALK 37N-2A-XR, CHALK 20C-35-M, CHALK 20N-35B-M, CHALK 9N-35C-M, CHALK 9C-35-M, CHALK 39N-35A-M & CHALK 39N-35C-M LOCATED IN SECTIONS 23, 24, 25 & 26 T6N, R66W, 6TH P.M. & LOCATED IN SECTION 2 T5N, R66W, 6TH P.M. & LOCATED IN SECTIONS 19 & 30 T6N, R65W, 6TH P.M. WELD COUNTY, COLORADO



SRC ENERGY
1675 Broadway, Suite 2600
Denver, Colorado 80202



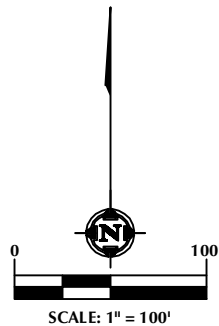
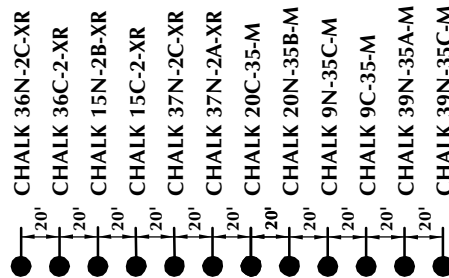
CONSULTING, LLC

SHERIDAN OFFICE
1095 Saberton Avenue
Sheridan, Wyoming 82801
Phone 307-674-0609

LOVELAND OFFICE
1635 Foxtrail Drive, Suite 204
Loveland, Colorado 80538
Phone 970-776-4331

DRAFTED BY:	LMO	CHECKED BY:	JRS	SHEET NO:
DATE DRAFTED:	9/26/17	DATE SURVEYED:	2/12/18	2A
REVISED:	2/28/18	FILE NAME:	17-41	2A OF 3

CHALK-SEELEY FEDERAL 7-26 PAD

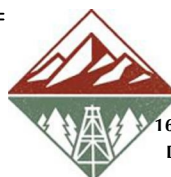


NOTES:

- ▲ INDICATES SECTION CORNER
- INDICATES CALCULATED CORNER
- BASIS OF BEARING DERIVED FROM COLORADO COORDINATE SYSTEM OF 1983 NORTH ZONE.
- ALL MEASURED DISTANCES ARE GRID.
COMBINED SCALE FACTOR: .99974177 CALCULATED FROM THE E. 1/4 CORNER OF SECTION 26, T6N, R66W
- WELL FOOTAGES ARE MEASURED AT RIGHT ANGLES TO THE SECTION LINES.

WELL PAD - CHALK-SEELEY FEDERAL 7-26 PAD

MULTI-WELL PLAN
SEELEY FEDERAL 38C-19-L, SEELEY FEDERAL 38N-19C-L, SEELEY FEDERAL 26N-30B-L, SEELEY FEDERAL 26C-30-L,
SEELEY FEDERAL 1N-30C-L, SEELEY FEDERAL 1N-30A-L, SEELEY FEDERAL 1N-30B-L, SEELEY FEDERAL 41C-30-L,
SEELEY FEDERAL 41N-30C-L, SEELEY FEDERAL 8N-30B-L, SEELEY FEDERAL 8C-30-L, SEELEY FEDERAL 9N-30C-L,
SEELEY FEDERAL 40C-30-L, SEELEY FEDERAL 40N-30B-L, SEELEY FEDERAL 40N-30C-L, SEELEY FEDERAL 39C-30-L,
SEELEY FEDERAL 9N-30B-L, SEELEY FEDERAL 9N-30C-L, SEELEY FEDERAL 39N-30A-L, SEELEY FEDERAL 39C-30-L,
SEELEY FEDERAL 39N-30B-L, SEELEY FEDERAL 16C-30-L, SEELEY FEDERAL 16N-30C-L, SEELEY FEDERAL 16N-30B-L,
SEELEY FEDERAL 38C-30-L, SEELEY FEDERAL 38N-30C-L, CHALK 36N-2C-XR, CHALK 36C-2-XR,
CHALK 15N-2B-XR, CHALK 15C-2-XR, CHALK 37N-2C-XR, CHALK 37N-2A-XR, CHALK 20C-35-M,
CHALK 20N-35B-M, CHALK 9N-35C-M, CHALK 9C-35-M, CHALK 39N-35A-M & CHALK 39N-35C-M
LOCATED IN SECTIONS 23, 24, 25 & 26
T6N, R66W, 6TH P.M. &
LOCATED IN SECTION 2
T5N, R66W, 6TH P.M. &
LOCATED IN SECTIONS 19 & 30
T6N, R65W, 6TH P.M.
WELD COUNTY, COLORADO



SRC ENERGY
1675 Broadway, Suite 2600
Denver, Colorado 80202



CONSULTING, LLC

SHERIDAN OFFICE
1095 Saberton Avenue
Sheridan, Wyoming 82801
Phone 307-674-0609

LOVELAND OFFICE
1635 Foxtrail Drive, Suite 204
Loveland, Colorado 80538
Phone 970-776-4331

DRAFTED BY:	LMO	CHECKED BY:	JRS	SHEET NO:
DATE DRAFTED:	9/26/17	DATE SURVEYED:	2/12/18	2B
REVISED:	2/28/18	FILE NAME:	17-41	2B OF 3

CHALK-SEELEY FEDERAL 7-26 PAD

WELL NOTES:

SEELEY FEDERAL 38C-19-L

SURFACE:

1713' FNL & 1589' FEL

LATITUDE= 40.461883°

LONGITUDE= -104.740588°

TOP OF PRODUCTION:

332' FSL & 150' FWL

LATITUDE= 40.467492°

LONGITUDE= -104.734421°

BOTTOM HOLE:

336' FSL & 150' FEL

LATITUDE= 40.467403°

LONGITUDE= -104.697351°

FORMATION:

CODELL

SEELEY FEDERAL 38N-19C-L

SURFACE:

1733' FNL & 1589' FEL

LATITUDE= 40.461828°

LONGITUDE= -104.740589°

TOP OF PRODUCTION:

110' FSL & 150' FWL

LATITUDE= 40.466883°

LONGITUDE= -104.734429°

BOTTOM HOLE:

114' FSL & 150' FEL

LATITUDE= 40.466793°

LONGITUDE= -104.697362°

FORMATION:

NIOBRARA

SEELEY FEDERAL 26N-30B-L

SURFACE:

1753' FNL & 1590' FEL

LATITUDE= 40.461773°

LONGITUDE= -104.740589°

TOP OF PRODUCTION:

108' FNL & 150' FWL

LATITUDE= 40.466284°

LONGITUDE= -104.734427°

BOTTOM HOLE:

103' FNL & 150' FEL

LATITUDE= 40.466198°

LONGITUDE= -104.697365°

FORMATION:

NIOBRARA

SEELEY FEDERAL 26C-30-L

SURFACE:

1773' FNL & 1590' FEL

LATITUDE= 40.461719°

LONGITUDE= -104.740590°

TOP OF PRODUCTION:

329' FNL & 150' FWL

LATITUDE= 40.465677°

LONGITUDE= -104.734415°

BOTTOM HOLE:

325' FNL & 150' FEL

LATITUDE= 40.465588°

LONGITUDE= -104.697358°

FORMATION:

CODELL

SEELEY FEDERAL 1N-30C-L

SURFACE:

1793' FNL & 1591' FEL

LATITUDE= 40.461664°

LONGITUDE= -104.740590°

TOP OF PRODUCTION:

548' FNL & 150' FWL

LATITUDE= 40.465076°

LONGITUDE= -104.734403°

BOTTOM HOLE:

545' FNL & 150' FEL

LATITUDE= 40.464984°

LONGITUDE= -104.697352°

FORMATION:

NIOBRARA

SEELEY FEDERAL 1N-30A-L

SURFACE:

1813' FNL & 1591' FEL

LATITUDE= 40.461609°

LONGITUDE= -104.740591°

TOP OF PRODUCTION:

768' FNL & 150' FWL

LATITUDE= 40.464472°

LONGITUDE= -104.734391°

BOTTOM HOLE:

764' FNL & 150' FEL

LATITUDE= 40.464383°

LONGITUDE= -104.697345°

FORMATION:

NIOBRARA

SEELEY FEDERAL 1N-30B-L

SURFACE:

1833' FNL & 1592' FEL

LATITUDE= 40.461554°

LONGITUDE= -104.740592°

TOP OF PRODUCTION:

987' FNL & 150' FWL

LATITUDE= 40.463871°

LONGITUDE= -104.734379°

BOTTOM HOLE:

984' FNL & 150' FEL

LATITUDE= 40.463779°

LONGITUDE= -104.697339°

FORMATION:

NIOBRARA

SEELEY FEDERAL 41C-30-L

SURFACE:

1853' FNL & 1592' FEL

LATITUDE= 40.461499°

LONGITUDE= -104.740592°

TOP OF PRODUCTION:

1208' FNL & 150' FWL

LATITUDE= 40.463264°

LONGITUDE= -104.734366°

BOTTOM HOLE:

1203' FNL & 150' FEL

LATITUDE= 40.463178°

LONGITUDE= -104.697332°

FORMATION:

CODELL

SEELEY FEDERAL 41N-30C-L

SURFACE:

1873' FNL & 1593' FEL

LATITUDE= 40.461444°

LONGITUDE= -104.740593°

TOP OF PRODUCTION:

1427' FNL & 150' FWL

LATITUDE= 40.462663°

LONGITUDE= -104.734354°

BOTTOM HOLE:

1425' FNL & 150' FEL

LATITUDE= 40.462569°

LONGITUDE= -104.697326°

FORMATION:

NIOBRARA

SEELEY FEDERAL 8N-30B-L

SURFACE:

1893' FNL & 1593' FEL

LATITUDE= 40.461389°

LONGITUDE= -104.740594°

TOP OF PRODUCTION:

1649' FNL & 150' FWL

LATITUDE= 40.462053°

LONGITUDE= -104.734342°

BOTTOM HOLE:

1645' FNL & 150' FEL

LATITUDE= 40.461965°

LONGITUDE= -104.697319°

FORMATION:

NIOBRARA

SEELEY FEDERAL 8C-30-L

SURFACE:

1913' FNL & 1594' FEL

LATITUDE= 40.461334°

LONGITUDE= -104.740594°

TOP OF PRODUCTION:

1865' FNL & 150' FWL

LATITUDE= 40.461460°

LONGITUDE= -104.734330°

BOTTOM HOLE:

1865' FNL & 150' FEL

LATITUDE= 40.461361°

LONGITUDE= -104.697313°

FORMATION:

CODELL

SEELEY FEDERAL 8N-30C-L

SURFACE:

1933' FNL & 1594' FEL

LATITUDE= 40.461279°

LONGITUDE= -104.740595°

TOP OF PRODUCTION:

2085' FNL & 150' FWL

LATITUDE= 40.460856°

LONGITUDE= -104.734318°

BOTTOM HOLE:

2083' FNL & 150' FEL

LATITUDE= 40.460763°

LONGITUDE= -104.697307°

FORMATION:

NIOBRARA

SEELEY FEDERAL 40C-30-L

SURFACE:

1953' FNL & 1594' FEL

LATITUDE= 40.461224°

LONGITUDE= -104.740595°

TOP OF PRODUCTION:

2308' FNL & 150' FWL

LATITUDE= 40.460244°

LONGITUDE= -104.734306°

BOTTOM HOLE:

2305' FNL & 150' FEL

LATITUDE= 40.460153°

LONGITUDE= -104.697300°

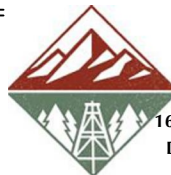
FORMATION:

CODELL

WELL PAD - CHALK-SEELEY FEDERAL 7-26 PAD

MULTI-WELL PLAN

SEELEY FEDERAL 38C-19-L, SEELEY FEDERAL 38N-19C-L, SEELEY FEDERAL 26N-30B-L, SEELEY FEDERAL 26C-30-L, SEELEY FEDERAL 1N-30C-L, SEELEY FEDERAL 1N-30A-L, SEELEY FEDERAL 1N-30B-L, SEELEY FEDERAL 41C-30-L, SEELEY FEDERAL 41N-30C-L, SEELEY FEDERAL 8N-30B-L, SEELEY FEDERAL 8C-30-L, SEELEY FEDERAL 8N-30C-L, SEELEY FEDERAL 40C-30-L, SEELEY FEDERAL 40N-30B-L, SEELEY FEDERAL 40N-30C-L, SEELEY FEDERAL 9C-30-L, SEELEY FEDERAL 9N-30B-L, SEELEY FEDERAL 9N-30C-L, SEELEY FEDERAL 39N-30A-L, SEELEY FEDERAL 39C-30-L, SEELEY FEDERAL 39N-30B-L, SEELEY FEDERAL 16C-30-L, SEELEY FEDERAL 16N-30C-L, SEELEY FEDERAL 16N-30B-L, SEELEY FEDERAL 38C-30-L, SEELEY FEDERAL 38N-30C-L, CHALK 36N-2C-XR, CHALK 36C-2-XR, CHALK 15N-2B-XR, CHALK 15C-2-XR, CHALK 37N-2C-XR, CHALK 37N-2A-XR, CHALK 20C-35-M, CHALK 20N-35B-M, CHALK 9N-35C-M, CHALK 9C-35-M, CHALK 39N-35A-M & CHALK 39N-35C-M
LOCATED IN SECTIONS 23, 24, 25 & 26
T6N, R66W, 6TH P.M. &
LOCATED IN SECTION 2
T5N, R66W, 6TH P.M. &
LOCATED IN SECTIONS 19 & 30
T6N, R65W, 6TH P.M.
WELD COUNTY, COLORADO



SRC ENERGY

1675 Broadway, Suite 2600
Denver, Colorado 80202



CONSULTING, LLC

SHERIDAN OFFICE
1095 Saberton Avenue
Sheridan, Wyoming 82801
Phone 307-674-0609

LOVELAND OFFICE
1635 Foxtrail Drive, Suite 204
Loveland, Colorado 80538
Phone 970-776-4331

DRAFTED BY:	LMO	CHECKED BY:	JRS	SHEET NO:
DATE DRAFTED:	9/26/17	DATE SURVEYED:	2/12/18	3A
REVISED:	2/28/18	FILE NAME:	17-41	3A OF 3

CHALK-SEELEY FEDERAL 7-26 PAD

WELL NOTES:

SEELEY FEDERAL 40N-30B-L

SURFACE:

1973' FNL & 1595' FEL

LATITUDE= 40.461170°

LONGITUDE= -104.740596°

TOP OF PRODUCTION:

2528' FSL & 150' FWL

LATITUDE= 40.459640°

LONGITUDE= -104.734294°

BOTTOM HOLE:

2525' FNL & 150' FEL

LATITUDE= 40.459549°

LONGITUDE= -104.697294°

FORMATION:

NIOBRARA

SEELEY FEDERAL 40N-30C-L

SURFACE:

2053' FNL & 1597' FEL

LATITUDE= 40.460950°

LONGITUDE= -104.740598°

TOP OF PRODUCTION:

2530' FSL & 150' FWL

LATITUDE= 40.459088°

LONGITUDE= -104.734285°

BOTTOM HOLE:

2563' FSL & 150' FEL

LATITUDE= 40.458989°

LONGITUDE= -104.697289°

FORMATION:

NIOBRARA

SEELEY FEDERAL 9C-30-L

SURFACE:

2073' FNL & 1597' FEL

LATITUDE= 40.460895°

LONGITUDE= -104.740599°

TOP OF PRODUCTION:

2308' FSL & 150' FWL

LATITUDE= 40.458478°

LONGITUDE= -104.734277°

BOTTOM HOLE:

2343' FSL & 150' FEL

LATITUDE= 40.458385°

LONGITUDE= -104.697286°

FORMATION:

CODELL

SEELEY FEDERAL 9N-30B-L

SURFACE:

2093' FNL & 1598' FEL

LATITUDE= 40.460840°

LONGITUDE= -104.740600°

TOP OF PRODUCTION:

2089' FSL & 150' FWL

LATITUDE= 40.457877°

LONGITUDE= -104.734270°

BOTTOM HOLE:

2126' FSL & 150' FEL

LATITUDE= 40.457790°

LONGITUDE= -104.697283°

FORMATION:

NIOBRARA

SEELEY FEDERAL 9N-30C-L

SURFACE:

2112' FNL & 1598' FEL

LATITUDE= 40.460785°

LONGITUDE= -104.740600°

TOP OF PRODUCTION:

1867' FSL & 150' FWL

LATITUDE= 40.457268°

LONGITUDE= -104.734263°

BOTTOM HOLE:

1905' FSL & 150' FEL

LATITUDE= 40.457183°

LONGITUDE= -104.697280°

FORMATION:

NIOBRARA

SEELEY FEDERAL 39N-30A-L

SURFACE:

2132' FNL & 1599' FEL

LATITUDE= 40.460730°

LONGITUDE= -104.740601°

TOP OF PRODUCTION:

1650' FSL & 150' FWL

LATITUDE= 40.456672°

LONGITUDE= -104.734256°

BOTTOM HOLE:

1683' FSL & 150' FEL

LATITUDE= 40.456574°

LONGITUDE= -104.697276°

FORMATION:

NIOBRARA

SEELEY FEDERAL 39C-30-L

SURFACE:

2152' FNL & 1599' FEL

LATITUDE= 40.460675°

LONGITUDE= -104.740602°

TOP OF PRODUCTION:

1428' FSL & 150' FWL

LATITUDE= 40.456062°

LONGITUDE= -104.734248°

BOTTOM HOLE:

1464' FSL & 150' FEL

LATITUDE= 40.455973°

LONGITUDE= -104.697273°

FORMATION:

CODELL

SEELEY FEDERAL 39N-30B-L

SURFACE:

2172' FNL & 1600' FEL

LATITUDE= 40.460621°

LONGITUDE= -104.740602°

TOP OF PRODUCTION:

1209' FSL & 150' FWL

LATITUDE= 40.455461°

LONGITUDE= -104.734241°

BOTTOM HOLE:

1244' FSL & 150' FEL

LATITUDE= 40.455369°

LONGITUDE= -104.697270°

FORMATION:

NIOBRARA

SEELEY FEDERAL 16C-30-L

SURFACE:

2192' FNL & 1600' FEL

LATITUDE= 40.460566°

LONGITUDE= -104.740603°

TOP OF PRODUCTION:

987' FSL & 150' FWL

LATITUDE= 40.454852°

LONGITUDE= -104.734233°

BOTTOM HOLE:

1022' FSL & 150' FEL

LATITUDE= 40.454759°

LONGITUDE= -104.697267°

FORMATION:

CODELL

SEELEY FEDERAL 16N-30C-L

SURFACE:

2212' FNL & 1601' FEL

LATITUDE= 40.460511°

LONGITUDE= -104.740603°

TOP OF PRODUCTION:

767' FSL & 150' FWL

LATITUDE= 40.454248°

LONGITUDE= -104.734226°

BOTTOM HOLE:

803' FSL & 150' FEL

LATITUDE= 40.454158°

LONGITUDE= -104.697264°

FORMATION:

NIOBRARA

SEELEY FEDERAL 16N-30B-L

SURFACE:

2232' FNL & 1601' FEL

LATITUDE= 40.460456°

LONGITUDE= -104.740604°

TOP OF PRODUCTION:

548' FSL & 150' FWL

LATITUDE= 40.453646°

LONGITUDE= -104.734219°

BOTTOM HOLE:

583' FSL & 150' FEL

LATITUDE= 40.453554°

LONGITUDE= -104.697261°

FORMATION:

NIOBRARA

SEELEY FEDERAL 38C-30-L

SURFACE:

2252' FNL & 1602' FEL

LATITUDE= 40.460401°

LONGITUDE= -104.740605°

TOP OF PRODUCTION:

326' FSL & 150' FWL

LATITUDE= 40.453037°

LONGITUDE= -104.734212°

BOTTOM HOLE:

363' FSL & 150' FEL

LATITUDE= 40.452950°

LONGITUDE= -104.697257°

FORMATION:

CODELL

SEELEY FEDERAL 38N-30C-L

SURFACE:

2272' FNL & 1602' FEL

LATITUDE= 40.460346°

LONGITUDE= -104.740605°

TOP OF PRODUCTION:

107' FSL & 150' FWL

LATITUDE= 40.452436°

LONGITUDE= -104.734204°

BOTTOM HOLE:

142' FSL & 150' FEL

LATITUDE= 40.452344°

LONGITUDE= -104.697254°

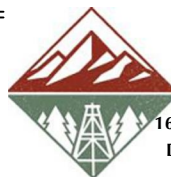
FORMATION:

NIOBRARA

WELL PAD - CHALK-SEELEY FEDERAL 7-26 PAD

MULTI-WELL PLAN

SEELEY FEDERAL 38C-19-L, SEELEY FEDERAL 38N-19C-L, SEELEY FEDERAL 26N-30B-L, SEELEY FEDERAL 26C-30-L, SEELEY FEDERAL 1N-30C-L, SEELEY FEDERAL 1N-30A-L, SEELEY FEDERAL 1N-30B-L, SEELEY FEDERAL 41C-30-L, SEELEY FEDERAL 41N-30C-L, SEELEY FEDERAL 8N-30B-L, SEELEY FEDERAL 8C-30-L, SEELEY FEDERAL 8N-30C-L, SEELEY FEDERAL 40C-30-L, SEELEY FEDERAL 40N-30B-L, SEELEY FEDERAL 40N-30C-L, SEELEY FEDERAL 9C-30-L, SEELEY FEDERAL 9N-30B-L, SEELEY FEDERAL 9N-30C-L, SEELEY FEDERAL 39N-30A-L, SEELEY FEDERAL 39C-30-L, SEELEY FEDERAL 39N-30B-L, SEELEY FEDERAL 16C-30-L, SEELEY FEDERAL 16N-30C-L, SEELEY FEDERAL 16N-30B-L, SEELEY FEDERAL 38C-30-L, SEELEY FEDERAL 38N-30C-L, CHALK 36N-2C-XR, CHALK 36C-2-XR, CHALK 15N-2B-XR, CHALK 15C-2-XR, CHALK 37N-2C-XR, CHALK 37N-2A-XR, CHALK 20C-35-M, SEELEY FEDERAL 38C-30-L, SEELEY FEDERAL 38N-30C-L, CHALK 36N-2C-XR, CHALK 36C-2-XR, CHALK 15N-2B-XR, CHALK 15C-2-XR, CHALK 37N-2C-XR, CHALK 37N-2A-XR, CHALK 20C-35-M, CHALK 20N-35B-M, CHALK 9N-35C-M, CHALK 9C-35-M, CHALK 39N-35A-M & CHALK 39N-35C-M LOCATED IN SECTIONS 23, 24, 25 & 26 T6N, R66W, 6TH P.M. & LOCATED IN SECTION 2 T5N, R66W, 6TH P.M. & LOCATED IN SECTIONS 19 & 30 T6N, R65W, 6TH P.M. WELD COUNTY, COLORADO



SRC ENERGY

1675 Broadway, Suite 2600
Denver, Colorado 80202



CONSULTING, LLC

SHERIDAN OFFICE
1095 Saberton Avenue
Sheridan, Wyoming 82801
Phone 307-674-0609

LOVELAND OFFICE
1635 Foxtrail Drive, Suite 204
Loveland, Colorado 80538
Phone 970-776-4331

DRAFTED BY:	LMO	CHECKED BY:	JRS	SHEET NO:
DATE DRAFTED:	9/26/17	DATE SURVEYED:	2/12/18	3B
REVISED:	2/28/18	FILE NAME:	17-41	3B OF 3

CHALK-SEELEY FEDERAL 7-26 PAD

WELL NOTES:

CHALK 36N-2C-XR

SURFACE:

2329' FNL & 2251' FEL

LATITUDE= 40.460190°

LONGITUDE= -104.742934°

TOP OF PRODUCTION:

2168' FSL & 2607' FEL

LATITUDE= 40.458102°

LONGITUDE= -104.744181°

BOTTOM HOLE:

460' FSL & 2870' FEL

LATITUDE= 40.423365°

LONGITUDE= -104.745487°

FORMATION:

NIOBRARA

CHALK 36C-2-XR

SURFACE:

2329' FNL & 2231' FEL

LATITUDE= 40.460189°

LONGITUDE= -104.742862°

TOP OF PRODUCTION:

2168' FSL & 2371' FEL

LATITUDE= 40.458101°

LONGITUDE= -104.743333°

BOTTOM HOLE:

460' FSL & 2621' FEL

LATITUDE= 40.423432°

LONGITUDE= -104.744591°

FORMATION:

CODELL

CHALK 15N-2B-XR

SURFACE:

2330' FNL & 2211' FEL

LATITUDE= 40.460189°

LONGITUDE= -104.742790°

TOP OF PRODUCTION:

2168' FSL & 2266' FEL

LATITUDE= 40.458100°

LONGITUDE= -104.742956°

BOTTOM HOLE:

460' FSL & 2519' FEL

LATITUDE= 40.423459°

LONGITUDE= -104.744224°

FORMATION:

NIOBRARA

CHALK 15C-2-XR

SURFACE:

2330' FNL & 2191' FEL

LATITUDE= 40.460188°

LONGITUDE= -104.742718°

TOP OF PRODUCTION:

2167' FSL & 1921' FEL

LATITUDE= 40.458098°

LONGITUDE= -104.741715°

BOTTOM HOLE:

460' FSL & 2083' FEL

LATITUDE= 40.423576°

LONGITUDE= -104.742656°

FORMATION:

CODELL

CHALK 37N-2C-XR

SURFACE:

2330' FNL & 2171' FEL

LATITUDE= 40.460188°

LONGITUDE= -104.742647°

TOP OF PRODUCTION:

2167' FSL & 1693' FEL

LATITUDE= 40.458097°

LONGITUDE= -104.740896°

BOTTOM HOLE:

460' FSL & 1817' FEL

LATITUDE= 40.423647°

LONGITUDE= -104.741699°

FORMATION:

NIOBRARA

CHALK 37N-2A-XR

SURFACE:

2330' FNL & 2151' FEL

LATITUDE= 40.460187°

LONGITUDE= -104.742575°

TOP OF PRODUCTION:

2166' FSL & 1457' FEL

LATITUDE= 40.458096°

LONGITUDE= -104.740048°

BOTTOM HOLE:

460' FSL & 1558' FEL

LATITUDE= 40.423716°

LONGITUDE= -104.740767°

FORMATION:

NIOBRARA

CHALK 20C-35-M

SURFACE:

2330' FNL & 2131' FEL

LATITUDE= 40.460187°

LONGITUDE= -104.742503°

TOP OF PRODUCTION:

2166' FSL & 1221' FEL

LATITUDE= 40.458094°

LONGITUDE= -104.739200°

BOTTOM HOLE:

1496' FSL & 1233' FEL

LATITUDE= 40.441490°

LONGITUDE= -104.739317°

FORMATION:

CODELL

CHALK 20N-35B-M

SURFACE:

2331' FNL & 2111' FEL

LATITUDE= 40.460186°

LONGITUDE= -104.742431°

TOP OF PRODUCTION:

2166' FSL & 1002' FEL

LATITUDE= 40.458093°

LONGITUDE= -104.738413°

BOTTOM HOLE:

1494' FSL & 1042' FEL

LATITUDE= 40.441494°

LONGITUDE= -104.738631°

FORMATION:

NIOBRARA

CHALK 9N-35C-M

SURFACE:

2331' FNL & 2091' FEL

LATITUDE= 40.460186°

LONGITUDE= -104.742359°

TOP OF PRODUCTION:

2165' FSL & 768' FEL

LATITUDE= 40.458092°

LONGITUDE= -104.737572°

BOTTOM HOLE:

1493' FSL & 836' FEL

LATITUDE= 40.441499°

LONGITUDE= -104.737891°

FORMATION:

NIOBRARA

CHALK 9C-35-M

SURFACE:

2331' FNL & 2071' FEL

LATITUDE= 40.460185°

LONGITUDE= -104.742287°

TOP OF PRODUCTION:

2165' FSL & 535' FEL

LATITUDE= 40.458090°

LONGITUDE= -104.736734°

BOTTOM HOLE:

1491' FSL & 619' FEL

LATITUDE= 40.441503°

LONGITUDE= -104.737111°

FORMATION:

CODELL

CHALK 39N-35A-M

SURFACE:

2331' FNL & 2051' FEL

LATITUDE= 40.460185°

LONGITUDE= -104.742215°

TOP OF PRODUCTION:

2165' FSL & 313' FEL

LATITUDE= 40.458089°

LONGITUDE= -104.735937°

BOTTOM HOLE:

1489' FSL & 380' FEL

LATITUDE= 40.441508°

LONGITUDE= -104.736252°

FORMATION:

NIOBRARA

CHALK 39N-35C-M

SURFACE:

2331' FNL & 2031' FEL

LATITUDE= 40.460184°

LONGITUDE= -104.742143°

TOP OF PRODUCTION:

2164' FSL & 85' FEL

LATITUDE= 40.458088°

LONGITUDE= -104.735117°

BOTTOM HOLE:

1487' FSL & 147' FEL

LATITUDE= 40.441513°

LONGITUDE= -104.735415°

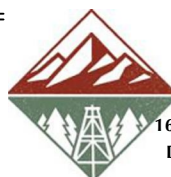
FORMATION:

NIOBRARA

WELL PAD - CHALK-SEELEY FEDERAL 7-26 PAD

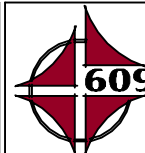
MULTI-WELL PLAN

SEELEY FEDERAL 38C-19-L, SEELEY FEDERAL 38N-19C-L, SEELEY FEDERAL 26N-30B-L, SEELEY FEDERAL 26C-30-L, SEELEY FEDERAL 1N-30C-L, SEELEY FEDERAL 1N-30A-L, SEELEY FEDERAL 1N-30B-L, SEELEY FEDERAL 41C-30-L, SEELEY FEDERAL 41N-30C-L, SEELEY FEDERAL 8N-30B-L, SEELEY FEDERAL 8C-30-L, SEELEY FEDERAL 8N-30C-L, SEELEY FEDERAL 40C-30-L, SEELEY FEDERAL 40N-30B-L, SEELEY FEDERAL 40N-30C-L, SEELEY FEDERAL 9C-30-L, SEELEY FEDERAL 9N-30B-L, SEELEY FEDERAL 9N-30C-L, SEELEY FEDERAL 39N-30A-L, SEELEY FEDERAL 39C-30-L, SEELEY FEDERAL 39N-30B-L, SEELEY FEDERAL 16C-30-L, SEELEY FEDERAL 16N-30C-L, SEELEY FEDERAL 16N-30B-L, SEELEY FEDERAL 30C-30-L, SEELEY FEDERAL 30N-30C-L, CHALK 36N-2C-XR, CHALK 36C-2-XR, CHALK 15N-2B-XR, CHALK 15C-2-XR, CHALK 37N-2C-XR, CHALK 37N-2A-XR, CHALK 20C-35-M, CHALK 20N-35B-M, CHALK 9N-35C-M, CHALK 9C-35-M, CHALK 39N-35A-M & CHALK 39N-35C-M
LOCATED IN SECTIONS 23, 24, 25 & 26
T6N, R66W, 6TH P.M. &
LOCATED IN SECTION 2
T5N, R66W, 6TH P.M. &
LOCATED IN SECTIONS 19 & 30
T6N, R65W, 6TH P.M.
WELD COUNTY, COLORADO



SRC ENERGY

1675 Broadway, Suite 2600
Denver, Colorado 80202



CONSULTING, LLC

SHERIDAN OFFICE
1095 Saberton Avenue
Sheridan, Wyoming 82801
Phone 307-674-0609

LOVELAND OFFICE
1635 Foxtrail Drive, Suite 204
Loveland, Colorado 80538
Phone 970-776-4331

DRAFTED BY:	LMO	CHECKED BY:	JRS	SHEET NO: 3C 3C OF 3
DATE DRAFTED:	9/26/17	DATE SURVEYED:	2/12/18	
REVISED:	6/5/18	FILE NAME:	17-41	