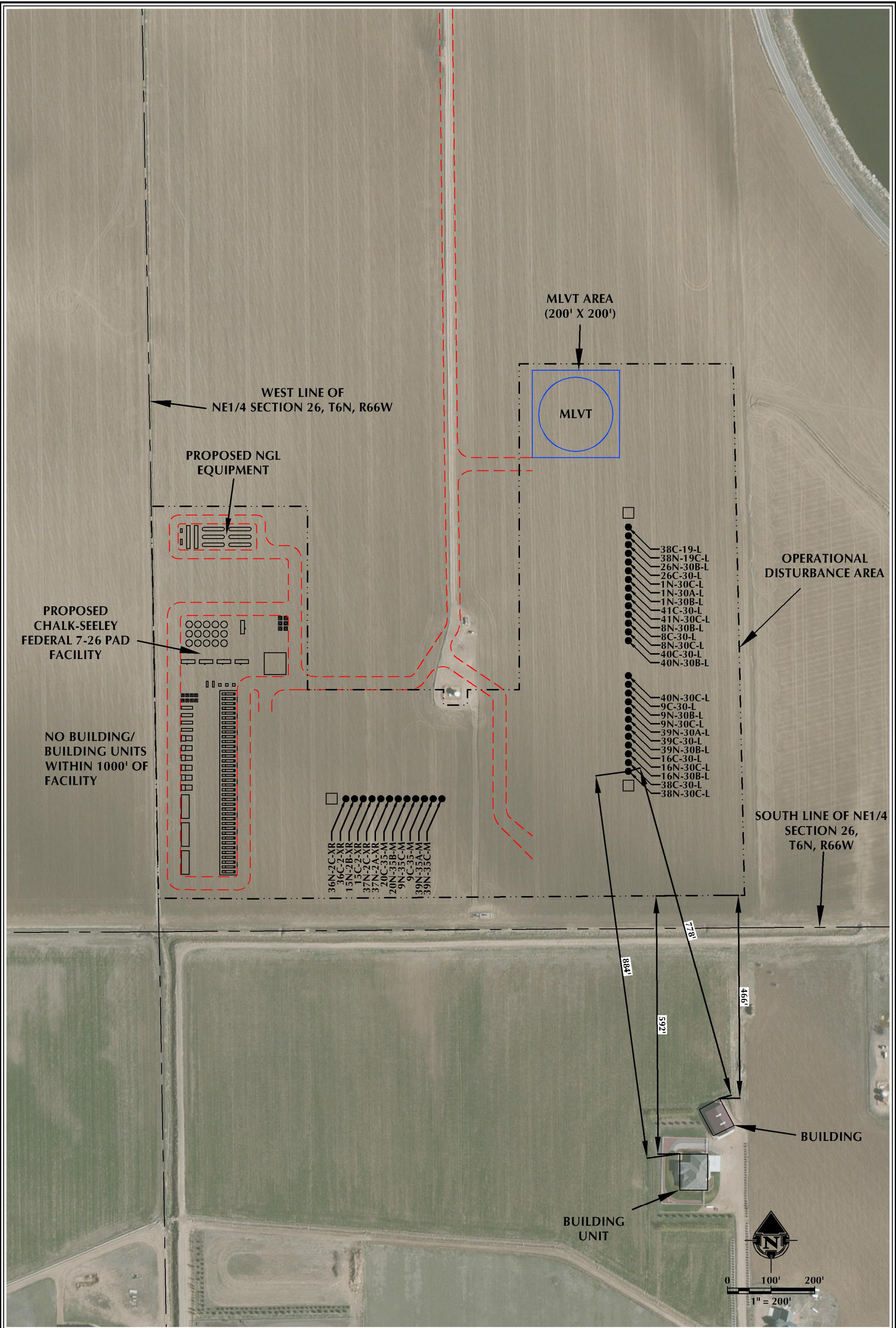


K:\SYSTEM\RESOURCES\2017\_01\CHALK-T6N-R66W\_SEC\_26\DWG\CHALK.dwg, 3/8/2018 1:20:05 PM, shawn



**DATA SOURCES:**  
- AERIAL COURTESY OF ESRI, INC.

**NOTES:**  
1. EQUIPMENT PLACEMENT IS APPROXIMATE  
AND SUBJECT TO MINOR MODIFICATION  
DUE TO SPECIFIC CIRCUMSTANCES.



LOVELAND OFFICE  
1635 Foxtrail Drive, Suite 204  
Loveland, Colorado 80538  
Phone 970-776-4331  
  
SHERIDAN OFFICE  
1095 Saberton Avenue  
Sheridan, Wyoming 82801  
Phone 307-674-0609



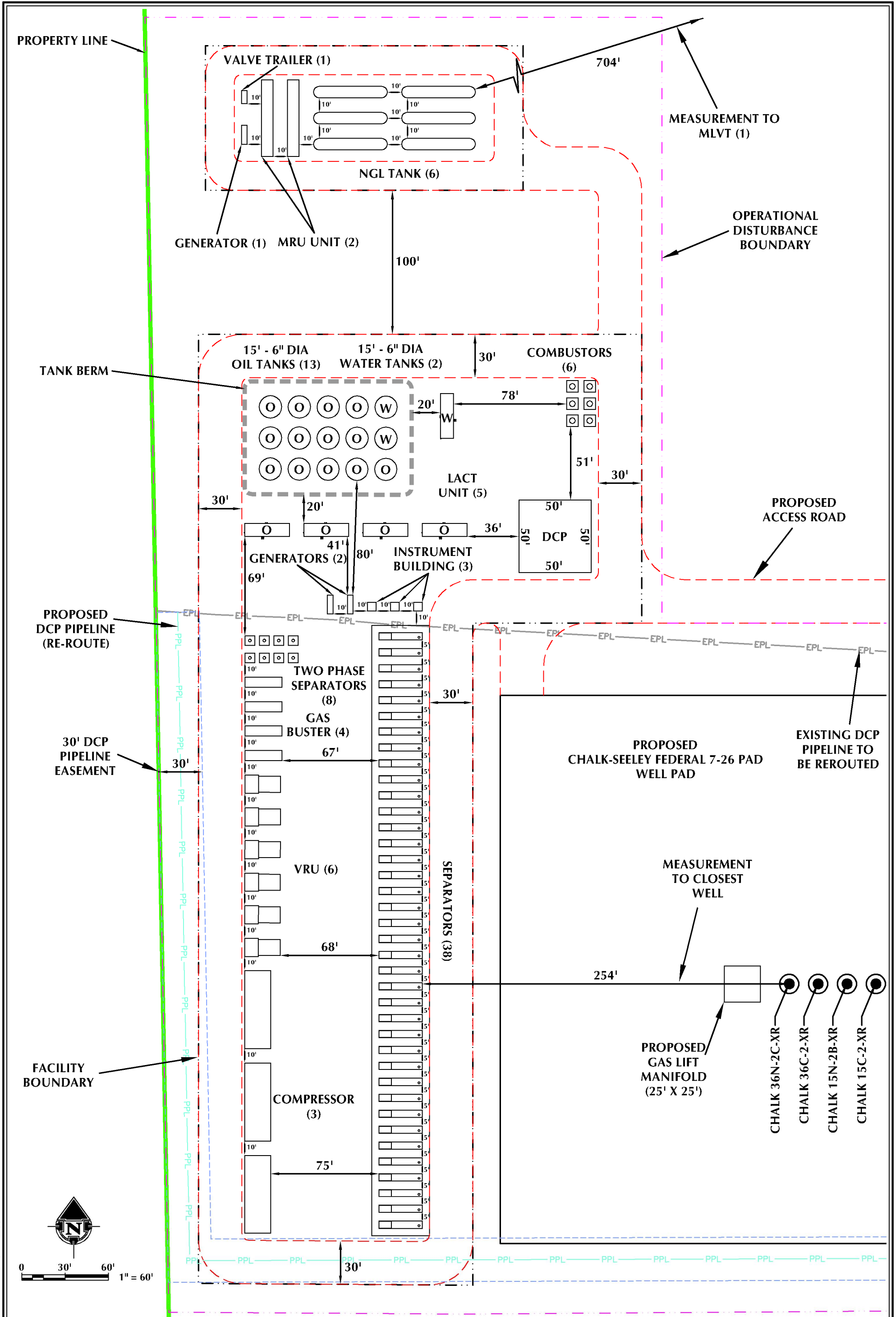
**SRC ENERGY**  
1675 Broadway, Suite 2600  
Denver, Colorado 80202

**SCALE:** 1" = 200'  
**DATE SURVEYED:** 7/7/17  
**DATE:** 9/29/17  
**DRAFTER:** CDJ  
**REVISED:** 3/8/18

**FACILITY LOCATION DRAWING (A)**  
CHALK-SEELEY FEDERAL 7-26 PAD  
LOCATED IN SECTION 26  
T6N, R66W, 6TH P.M.  
WELD COUNTY, COLORADO



K:\S\ENERGY RESOURCES\2017\_41\_CHALK\_T6N\_R66W\_SEC\_26\DWG\CHALK.dwg, 3/7/2018 9:39:00 P.M., dlevan



<p><b>NOTES:</b></p> <p>1. EQUIPMENT PLACEMENT IS APPROXIMATE AND SUBJECT TO MINOR MODIFICATION DUE TO SPECIFIC CIRCUMSTANCES.</p>	<p><b>609 CONSULTING, LLC</b></p> <p>LOVELAND OFFICE 1635 Foxtrail Drive, Suite 204 Loveland, Colorado 80538 Phone 970-776-4331</p> <p>SHERIDAN OFFICE 1095 Saberton Avenue Sheridan, Wyoming 82801 Phone 307-674-0609</p>	<p><b>SRC ENERGY</b></p> <p>1675 Broadway, Suite 2600 Denver, Colorado 80202</p>	<p><b>SCALE:</b> 1" = 50'</p> <p><b>DATE SURVEYED:</b> 7/7/17</p> <p><b>DATE:</b> 7/5/17</p> <p><b>DRAFTER:</b> CDJ</p> <p><b>REVISED:</b> 3/7/18</p>	<p><b>FACILITY LOCATION DRAWING (B)</b></p> <p>CHALK-SEELEY FEDERAL 7-26 PAD LOCATED IN SECTION 26 T6N, R66W, 6TH P.M. WELD COUNTY, COLORADO</p>
--	--	--	---	--

**FACILITY LOCATION DRAWING (C)  
CHALK-SEELEY FEDERAL 7-26 PAD  
PRODUCTION FACILITY & MISC. EQUIPMENT**

# MLVTs	1
# VRUs	6
# Compressors	3
# LACT Units	5
# Combustors	6
# Gas Busters	4
# Oil Tanks	13
# Water Tanks	2
# Generators	3
# Single Separators	38
# Two Phase Separators	8
# Instrument Air Buildings	3
# Gas Lift Skids	3
# Valve Trailer	1
# MRU Unit	2
NGL Tank	6
* No existing facility equipment within disturbance area *	

**WELLS**

Proposed:

CHALK 36N-2C-XR, CHALK 36C-2-XR, CHALK 15N-2B-XR,  
CHALK 15C-2-XR, CHALK 37N-2C-XR, CHALK 37N-2A-XR,  
CHALK 20C-35-M, CHALK 20N-35B-M, CHALK 9N-35C-M,  
CHALK 9C-35-M, CHALK 39N-35A-M, CHALK 39N-35C-M,  
SEELEY FEDERAL 38C-19-L, SEELEY FEDERAL 38N-19C-L,  
SEELEY FEDERAL 26N-30B-L, SEELEY FEDERAL 26C-30-L,  
SEELEY FEDERAL 1N-30C-L, SEELEY FEDERAL 1N-30A-L,  
SEELEY FEDERAL 1N-30B-L, SEELEY FEDERAL 41C-30-L,  
SEELEY FEDERAL 41N-30C-L, SEELEY FEDERAL 8N-30B-L,  
SEELEY FEDERAL 8C-30-L, SEELEY FEDERAL 8N-30C-L,  
SEELEY FEDERAL 40C-30-L, SEELEY FEDERAL 40N-30B-L,  
SEELEY FEDERAL 40N-30C-L, SEELEY FEDERAL 9C-30-L,  
SEELEY FEDERAL 9N-30B-L, SEELEY FEDERAL 9N-30C-L,  
SEELEY FEDERAL 39N-30A-L, SEELEY FEDERAL 39C-30-L,  
SEELEY FEDERAL 39N-30B-L, SEELEY FEDERAL 16C-30-L,  
SEELEY FEDERAL 16N-30C-L, SEELEY FEDERAL 16N-30B-L,  
SEELEY FEDERAL 38C-30-L & SEELEY FEDERAL 38N-30C-L

\* No existing wells within disturbance area \*