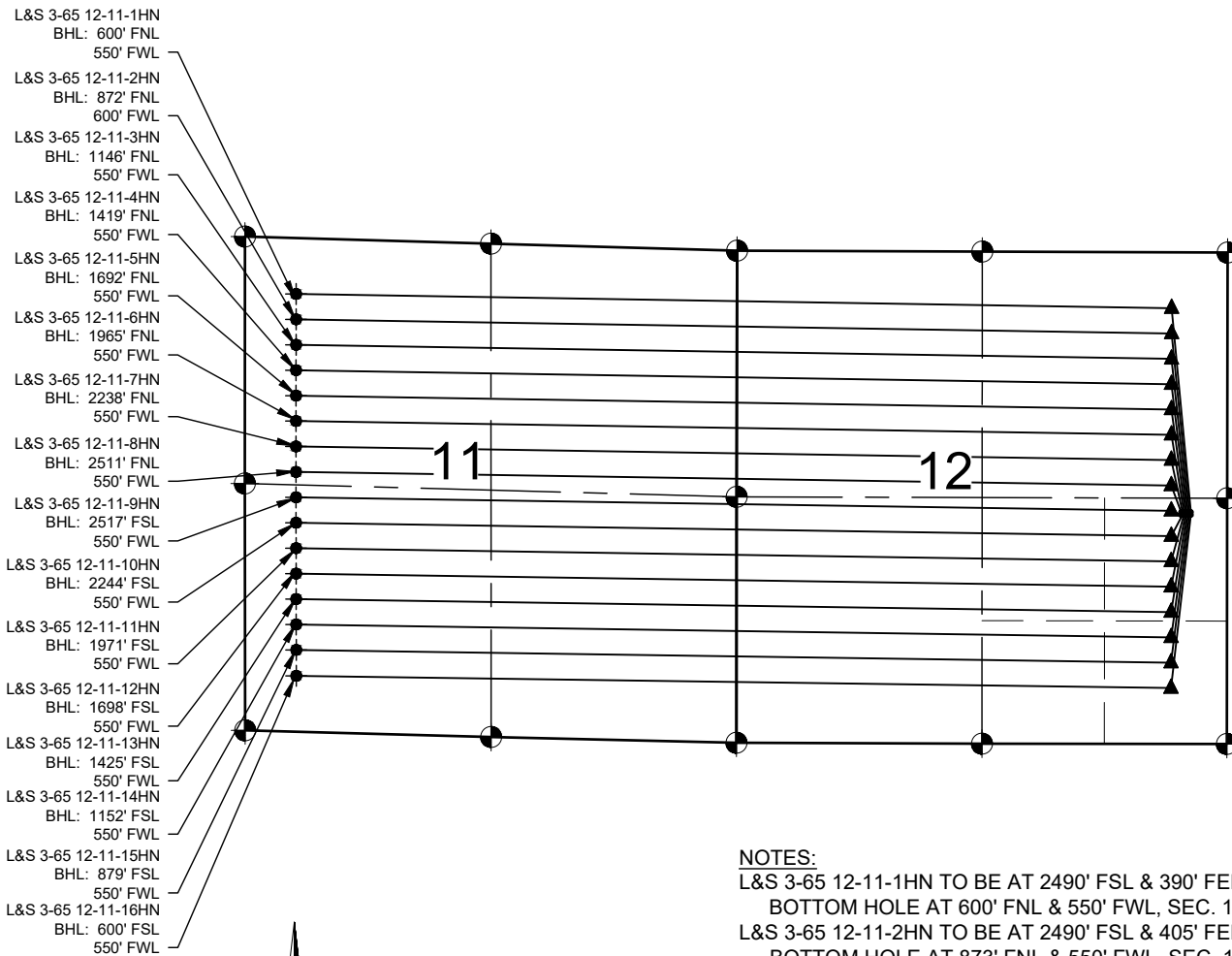


L&S 3-65 12-11 PAD MULTI-WELL PLAN



LEGEND

- Existing Monument: Circle with a dot
- Calculated Position: Circle
- Proposed Well: Circle with a dot
- Existing Well: Diamond
- Bottom Hole: Circle with a cross
- Landing Point: Triangle
- BHL = Bottom Hole Location

NOTES:

- THIS FIELD SURVEY CONFORMS TO THE MINIMUM STANDARDS SET BY THE C.O.G.C.C., RULE NO. 215
- ALL DISTANCES AND BEARINGS SHOWN HEREON ARE GROUND VALUES AS GPS MEASURED IN THE FIELD, WITH TIES TO WELLS MEASURED PERPENDICULAR TO SECTION LINES. THIS LOW DISTORTION PROJECTION (LDP) IS BASED ON THE NORTH AMERICAN DATUM OF 1983, U.S. SURVEY FOOT WITH A LATITUDE ORIGIN OF 39.783608°N, A CENTRAL MERIDIAN LONGITUDE OF 104.659233°W, AND A SCALE FACTOR ON THE CENTRAL MERIDIAN OF 1.000260 (EXACT). THE LDP BASIS OF BEARINGS IS GEODETIC NORTH.
- FIELD VERIFICATION OF MONUMENTS COMPLETED WITHIN 1 YEAR OF SIGNATURE DATE.

NOTES:

- L&S 3-65 12-11-1HN TO BE AT 2490' FSL & 390' FEL. BOTTOM HOLE AT 600' FNL & 550' FWL, SEC. 11.
- L&S 3-65 12-11-2HN TO BE AT 2490' FSL & 405' FEL. BOTTOM HOLE AT 873' FNL & 550' FWL, SEC. 11.
- L&S 3-65 12-11-3HN TO BE AT 2490' FSL & 420' FEL. BOTTOM HOLE AT 1146' FNL & 550' FWL, SEC. 11.
- L&S 3-65 12-11-4HN TO BE AT 2490' FSL & 435' FEL. BOTTOM HOLE AT 1419' FNL & 550' FWL, SEC. 11.
- L&S 3-65 12-11-5HN TO BE AT 2490' FSL & 450' FEL. BOTTOM HOLE AT 1692' FNL & 550' FWL, SEC. 11.
- L&S 3-65 12-11-6HN TO BE AT 2490' FSL & 465' FEL. BOTTOM HOLE AT 1985' FNL & 550' FWL, SEC. 11.
- L&S 3-65 12-11-7HN TO BE AT 2490' FSL & 480' FEL. BOTTOM HOLE AT 2238' FNL & 550' FWL, SEC. 11.
- L&S 3-65 12-11-8HN TO BE AT 2490' FSL & 495' FEL. BOTTOM HOLE AT 2511' FNL & 550' FWL, SEC. 11.
- L&S 3-65 12-11-9HN TO BE AT 2460' FSL & 495' FEL. BOTTOM HOLE AT 2517' FSL & 550' FWL, SEC. 11.
- L&S 3-65 12-11-10HN TO BE AT 2460' FSL & 480' FEL. BOTTOM HOLE AT 2244' FSL & 550' FWL, SEC. 11.
- L&S 3-65 12-11-11HN TO BE AT 2460' FSL & 465' FEL. BOTTOM HOLE AT 1971' FSL & 550' FWL, SEC. 11.
- L&S 3-65 12-11-12HN TO BE AT 2460' FSL & 450' FEL. BOTTOM HOLE AT 1698' FSL & 550' FWL, SEC. 11.
- L&S 3-65 12-11-13HN TO BE AT 2460' FSL & 435' FEL. BOTTOM HOLE AT 1425' FSL & 550' FWL, SEC. 11.
- L&S 3-65 12-11-14HN TO BE AT 2460' FSL & 420' FEL. BOTTOM HOLE AT 1152' FSL & 550' FWL, SEC. 11.
- L&S 3-65 12-11-15HN TO BE AT 2460' FSL & 405' FEL. BOTTOM HOLE AT 879' FSL & 550' FWL, SEC. 11.
- L&S 3-65 12-11-16HN TO BE AT 2460' FSL & 390' FEL. BOTTOM HOLE AT 600' FSL & 550' FWL, SEC. 11.