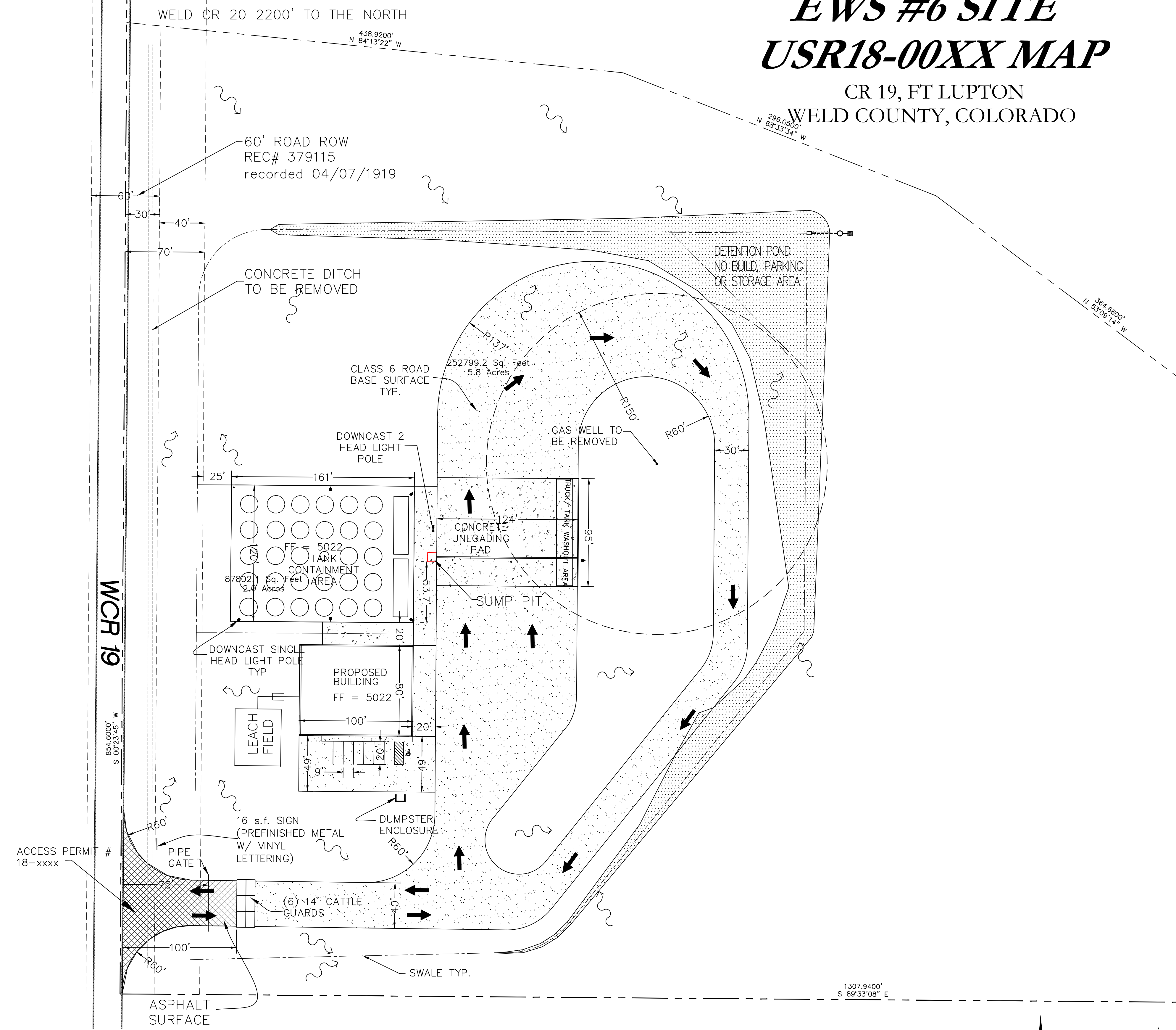
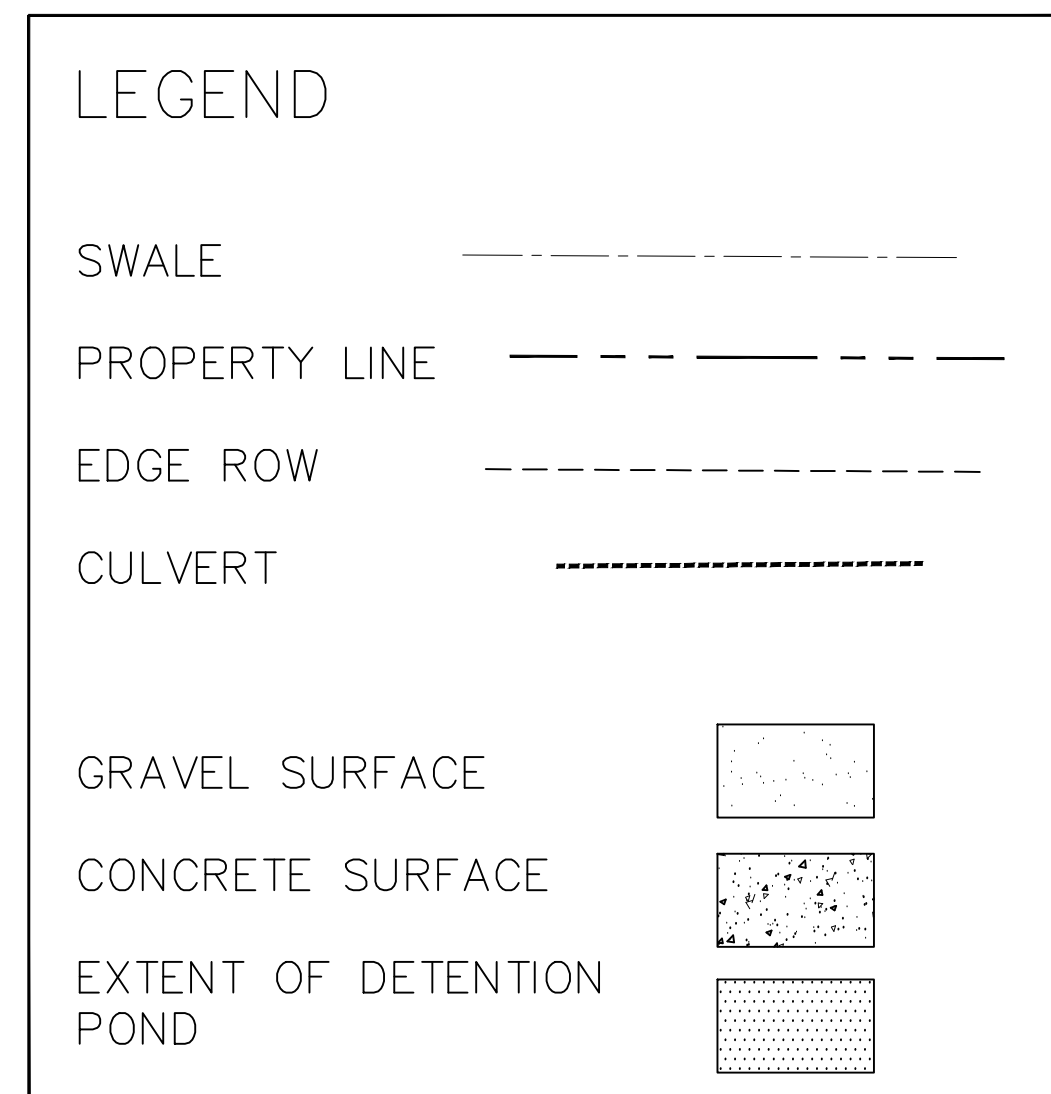
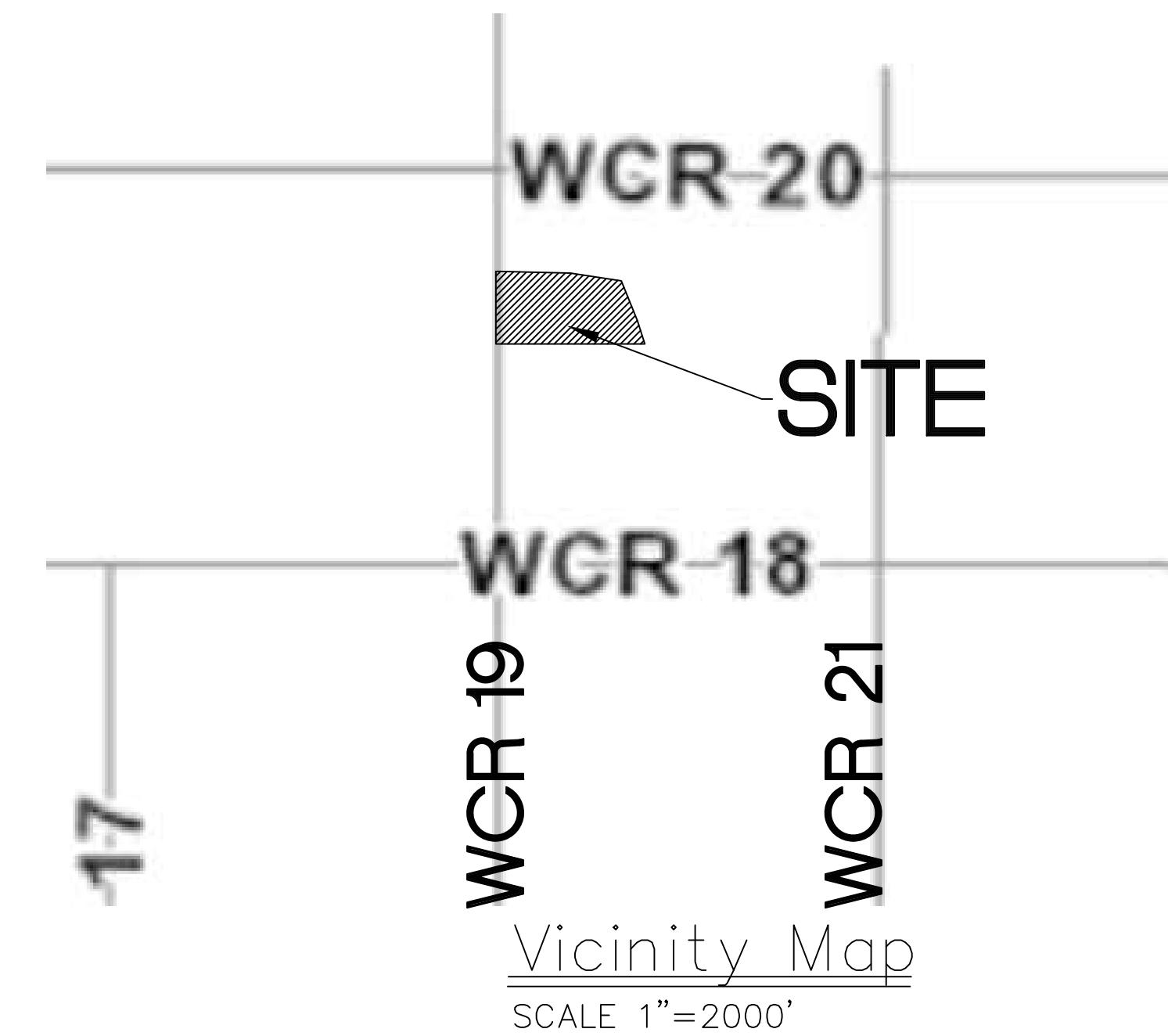


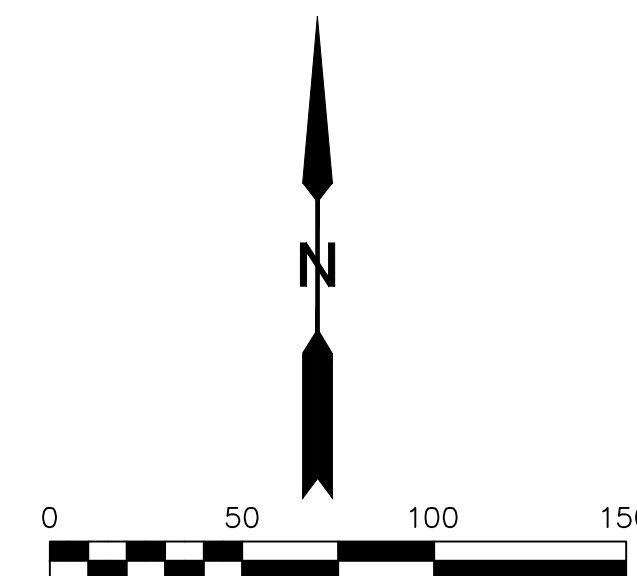
EWS #6 SITE USR18-00XX MAP

CR 19, FT LUPTON
WELD COUNTY, COLORADO



PARTIAL SITE PLAN

LEGAL DESC:
LOT B OF REC EX 3877 PART OF
NW 1/4 OF SEC 22 T2N R67W
WELD COUNTY COLORADO



PROPERTY OWNER'S CERTIFICATION

The undersigned major property owner(s) do hereby agree to the Site Specific Development Plan and Use by Special Review Development Standards as described herein this ____ day of _____, 20____.

Signature _____ Signature _____

PLANNING COMMISSION CERTIFICATION

This is to certify that the Weld County Planning Commission has certified and does hereby recommend to the Board of County Commissioners, Weld County Colorado, for its confirmation, approval and adoption this Site Specific Development Plan and Use by Special Review as shown and described thereon this ____ day of _____, 20____.

Chair, Weld County Planning Commission

BOARD OF COUNTY COMMISSIONERS CERTIFICATION

This is to certify that the Board of County Commissioners, Weld County, Colorado, does hereby confirm and adopt this Site Specific Development Plan and Use by Special Review and Development Standards as shown and described herein this ____ day of _____, 20____.

Chair, Board of County Commissioners

ATTEST:
Weld County Clerk to the Board

BY: _____ Deputy Clerk to the Board Dated: _____

DRAWN FOR
Expedition Water
Solutions
P.O. Box 336597
Creely Colorado 80633

EXPEDITION WATER
SOLUTIONS EWS #6 SITE
CR 19
FT LUPTON CO

WERNISMAN ENGINEERING
AND LAND DEVELOPMENT LLC
16493 ESSEX ROAD SOUTH
PLATTEVILLE CO 80651
PHONE 970-539-2656

DRAWN
EJW
CHECKED

DATE
3/19/2018

SCALE
1" = 50'

PROJECT #

SHEET

C1