

**Scale 1:240 (5"=100') Imperial
Measured Depth Log**

Well Name: Harvesters State 32N-16A-M
API: 051234635400
Location: Section 15, T6N, R66W, Weld County, CO.
License Number: Region: Wattenberg
Spud Date: May 31, 2018 Drilling Completed: June 2, 2018
Surface Coordinates: SWNE T6N, R66W Sec 15, 1,793' FNL & 2,334' FEL
LAT 40.490681 LONG -104.762512
Bottom Hole Coordinates: SWNW T6N, R66W Sec 16, 2,354' FNL & 337' FWL
Ground Elevation (ft): 4,802' K.B. Elevation (ft): 4,822'
Logged Interval (ft): 6,900' To: 14.543' Total Depth (ft): 14,543' DMTD
Formation: Pierre Shales / Sands, Sharon Springs, Niobrara A (Target)
Type of Drilling Fluid: FW Surface, OBM Vertical, Curve & Lateral
Printed by HORIZONTAL.LOG from WellSight Systems 1-800-447-1534 www.WellSight.com

OPERATOR

Company: SRC Energy Inc.
Address: 1675 Broadway, Suite 2600
Denver, Colorado 80202
(720) 616-4300

GEOLOGIST

Name: Ryan Scribner & Brian Spitzmiller
Company: Goolsby Brothers & Assoc. (GBA), Inc. (www.goolsbybrothers.com)
Address: 575 Union Blvd. Suite 208,
 Lakewood CO. 80228
 Tel 303-618-7736

Logs

PULSE MWD GR from 1,842'-14,528' MD

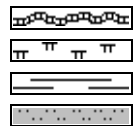
Casing

9 5/8" Surface Casing set @ 1,820' MD
5 1/2" Production Casing set @ 14,530' MD

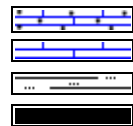
Comments

- 1) Drilling Contractor: Precision Drilling, Rig #462
Toolpusher: Cody Teeter, Joseph Credeur
- 2) Company Man: Steve Wilson, Buddy Davis
Lovell Young, Tony Pershall
- 3) Mud Company : Anchor USA
Engineer: Tim Pattison, James Eckhardt
- 4) Directional Drilling: Baker Hughes Directional
Rotary Steerable BHA
Drillers: Josh Otero, Matthew Leopold
- 5) Gas Equipment: Pason Gas Analyzer (Spectrometer)
- 6) SRC Geologist: Tony Williams

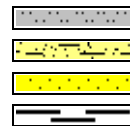
ROCK TYPES



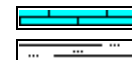
Bent
Mrlst
Shale
Slstst



Carb chalk
Chalk
Slty sh
Coal



Slstst
Arg_ss
Ss
Carb sh



Ls
Slty sh

ACCESSORIES

MINERAL

	Anhy
	Arggrn
	Arg
	Bent
	Bit
	Brecfrag
	Calc
	Carb
	Chtdk
	Chtlit
	Dol
	Feldspar
	Ferrpel
	Ferr
	Glau
	Gyp
	Hvymin
	Kaol
	Marl

	Minxl
	Nodule
	Phos
	Pyr
	Salt
	Sandy
	Silt
	Sil
	Sulphur
	Tuff

FOSSIL

	Algae
	Amph
	Belm
	Bioclst
	Brach
	Bryozoa
	Cephal
	Coral

	Crin
	Echin
	Fish
	Foram
	Fossil
	Gastro
	Oolite
	Ostra
	Pelec
	Pellet
	Pisolite
	Plant
	Strom

STRINGER

	Chlkstg
	Anhy
	Arg
	Bent
	Coal

	Dol
	Gyp
	Ls
	Mrst
	Slststrg
	Ssstrg

TEXTURE

	Boundst
	Chalky
	Cryxln
	Earthy
	Finexln
	Grainst
	Lithogr
	Microxln
	Mudst
	Packst
	Wackest

OTHER SYMBOLS

POROSITY TYPE

	Earthy
	Fenest
	Fracture
	Inter
	Moldic
	Organic
	Pinpoint
	Vuggy

SORTING

	Well
	Moderate
	Poor

ROUNDING

	Rounded
	Subrnd
	Subang
	Angular

OIL SHOWS

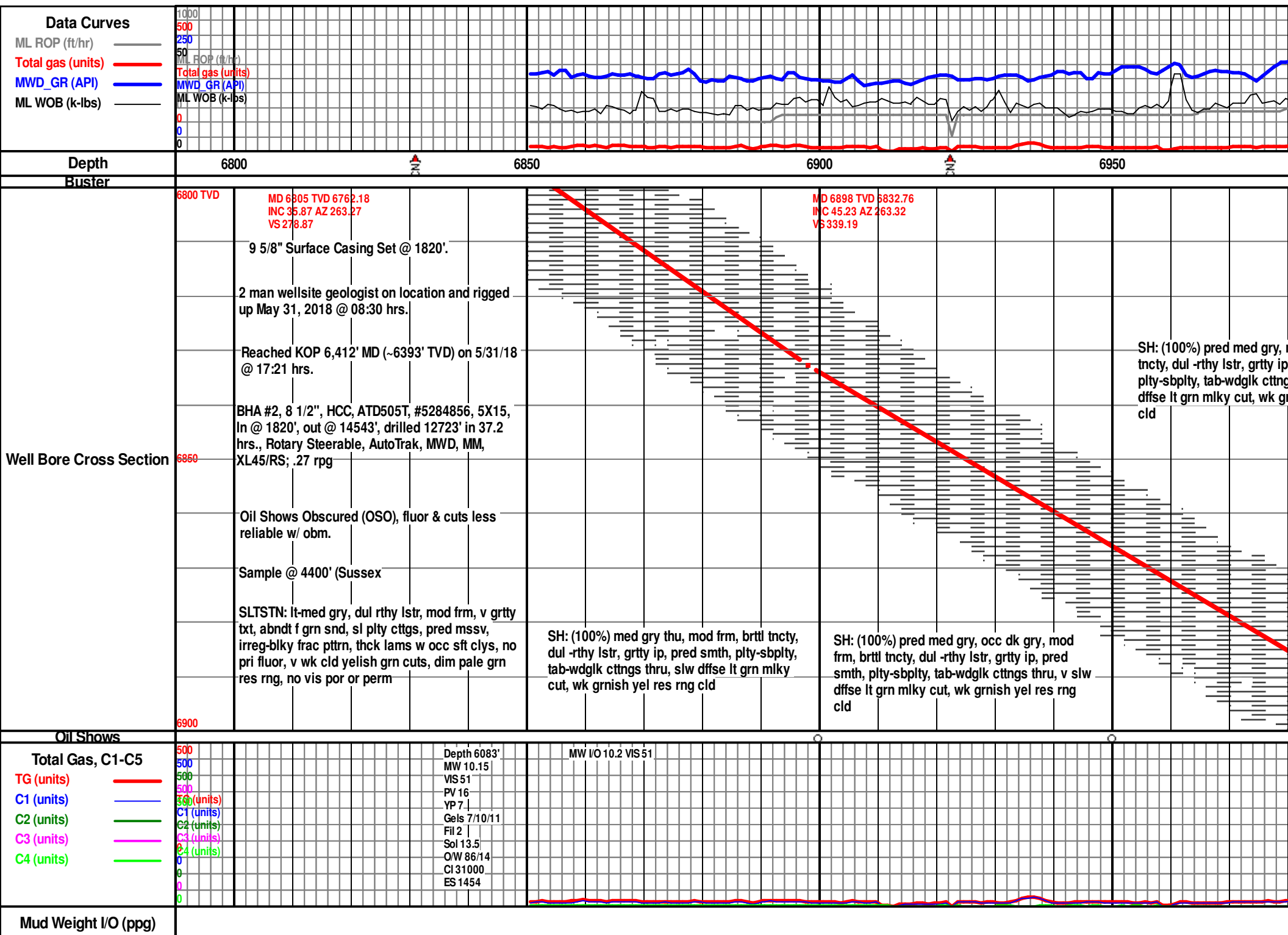
	Even
	Spotted
	Ques
	Dead
	Vspotty
	near even

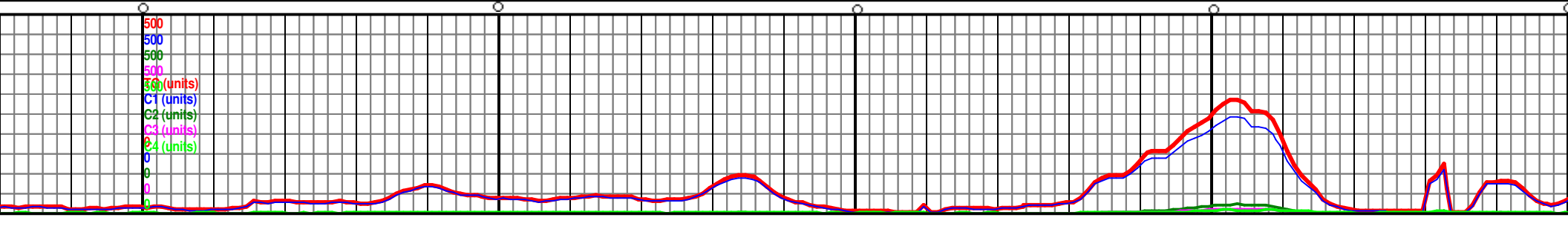
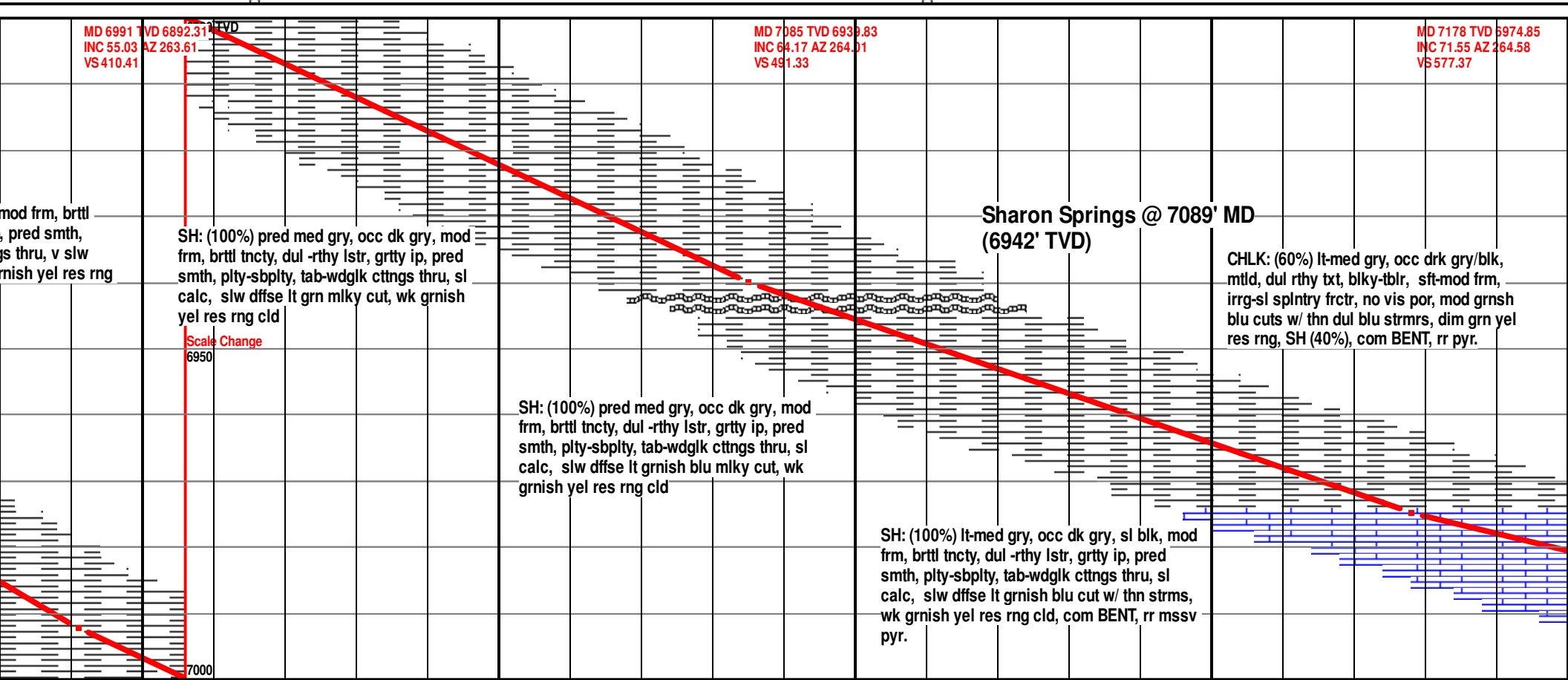
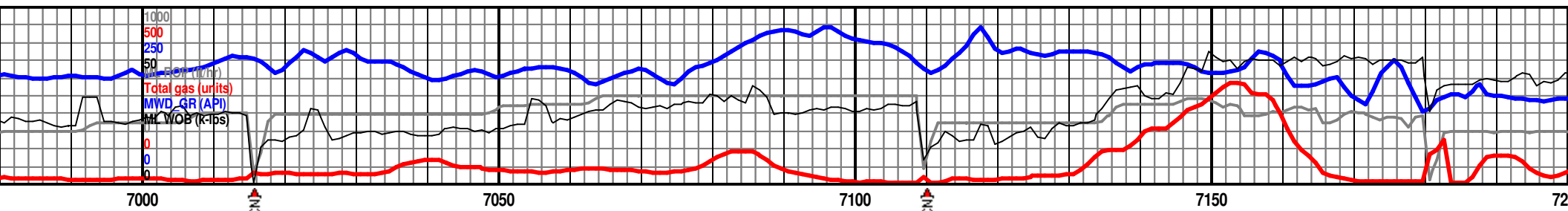
INTERVALS

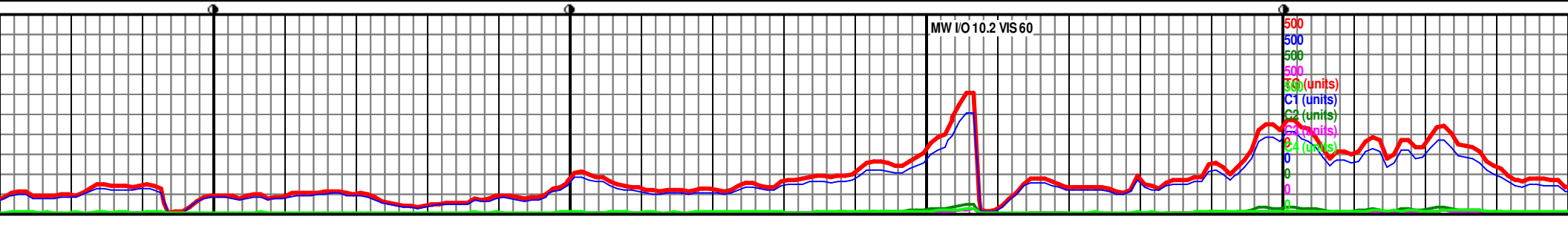
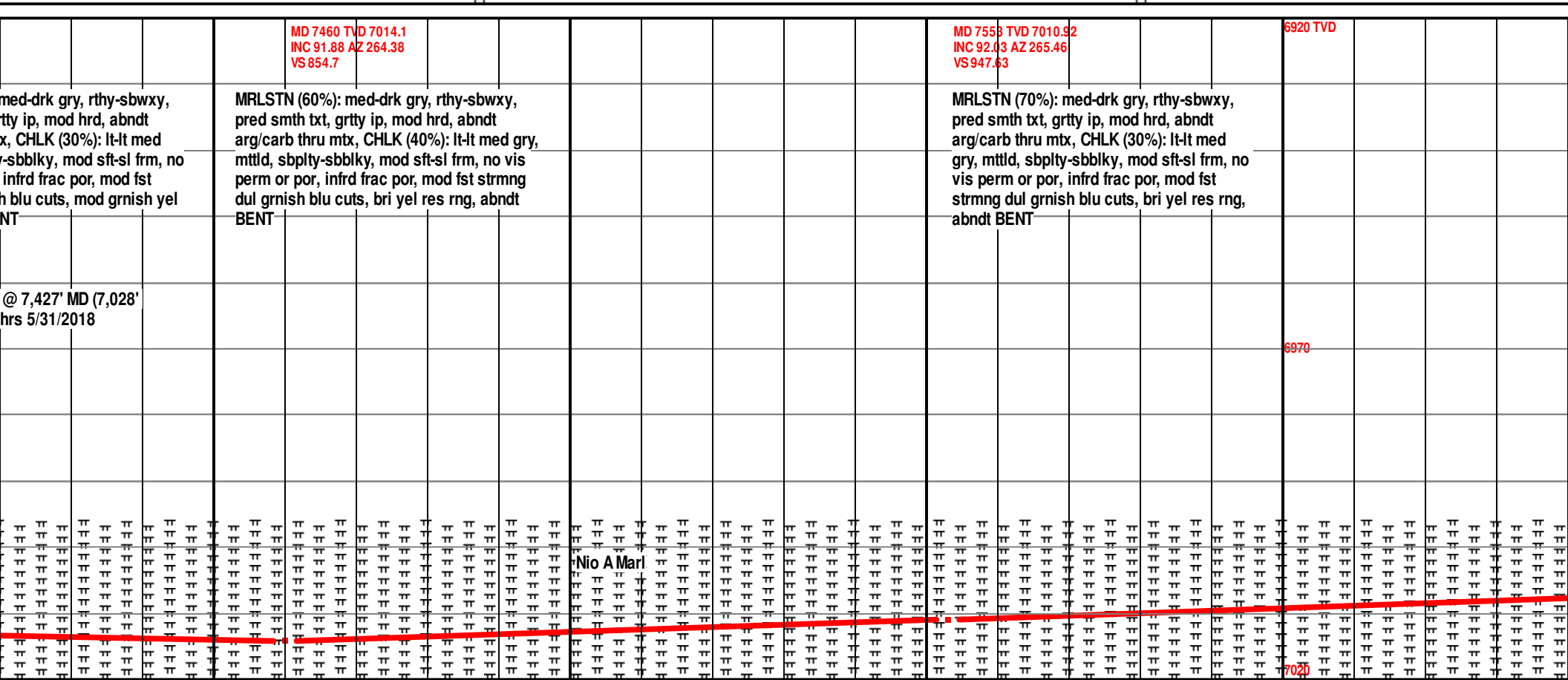
	Core
	Dst

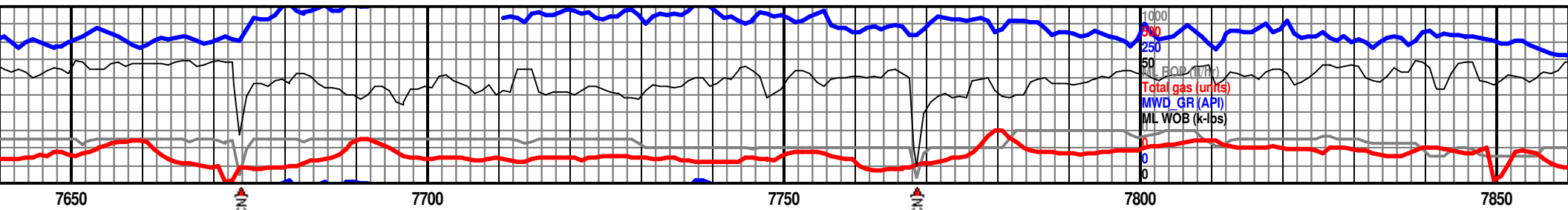
EVENTS

	Casing shoe_hzl
	Trip_point_1
	Off bottom
	conn
	Survey(mwd)
	Survey(red)
	bit









MD 7647 TVD 7007.59
INC 92.03 AZ 247.15
VS 1041.57

MRLSTN (90%): med-drk gry, rthy-sbwxy,
pred smth txt, rr grtty ip, mod hrd, CHLK
(30%): lt-lt med gry, mtltd, sbply-sbblky,
mod sft-sl frm, no vis perm or por, infrd
frac por, mod fst strrng dul grnish blu
cuts, bri yel res rng, com BENT

MD 7740 TVD 7004.23
INC 92.12 AZ 268.79
VS 1134.45

MRLSTN (90%): med-drk gry, rthy-sbwxy,
pred smth txt, rr grtty ip, mod hrd, CHLK
(30%): lt-lt med gry, mtltd, sbply-sbblky,
mod sft-sl frm, no vis perm or por, infrd
frac por, mod strrng dul grnish blu cuts
w/ slw thn strrms, bri yel res rng, tr BENT

6920 TVD

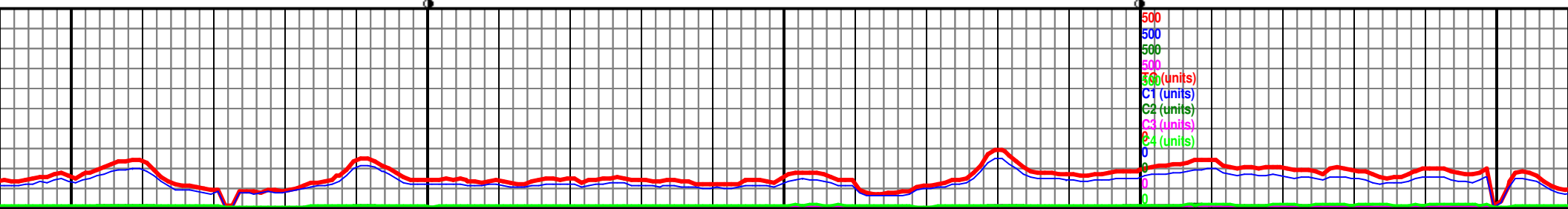
MD 7835 TVD 7000.55
INC 92.31 AZ 270.67
VS 1229.19

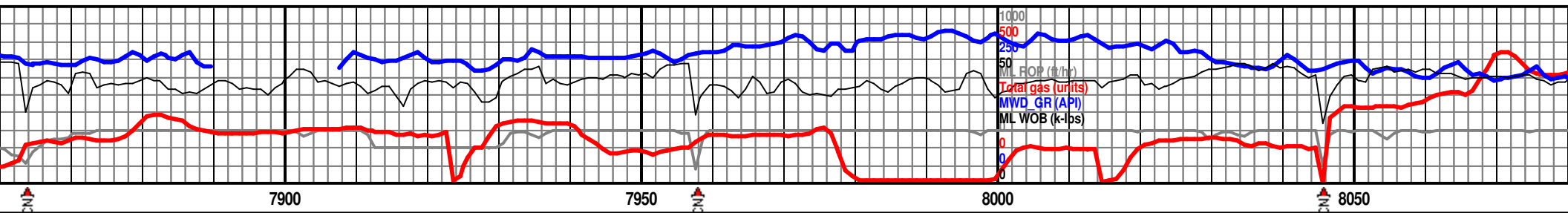
MRLSTN (90%): med-drk gry, rthy-sbwxy,
pred smth txt, rr grtty ip, mod hrd, CHLK
(30%): lt-lt med gry, mtltd, sbply-sbblky,
mod sft-sl frm, no vis perm or por, infrd
frac por, mod strrng dul grnish blu cuts
w/ slw thn strrms, bri yel res rng, tr BENT



6970

7020





MD 7928 TVD 5996.9
INC 92.19 AZ 274.03
VS 1321.56

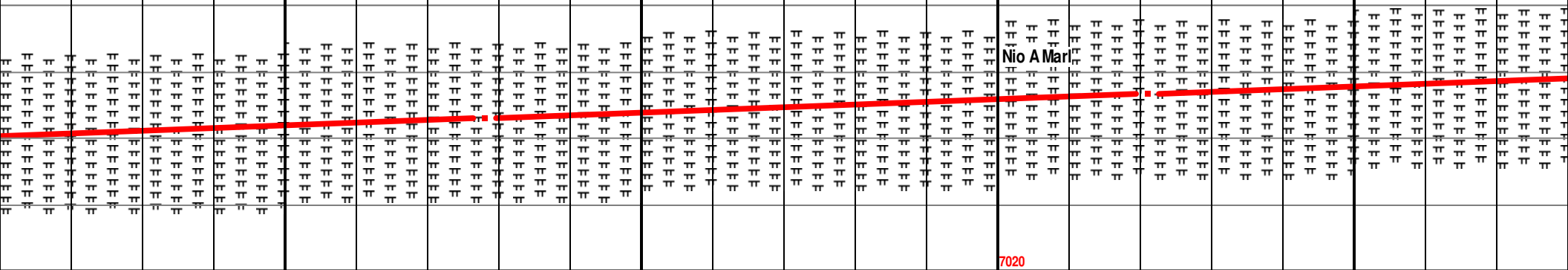
6920 TVD

MD 8021 TVD 6993.3
INC 92.25 AZ 274.26
VS 1413.57

STN (90%): med-drk gry,
sbwxy, pred smth txt, rr grtty ip,
hrd, CHLK (30%): lt-lt med gry,
sbply-sbblky, mod sft-sl frm, no
vis perm or por, infrd frac por, mod
strmng dul grnsh blu cuts w/ slw thn
strms, bri yel res rng, rr BENT, tr PYR

MRLSTN (80%): med-drk gry,
rthy-sbwxy, pred smth txt, rr grtty ip,
mod hrd, CHLK (20%): lt-lt med gry,
mttld, sbply-sbblky, mod sft-sl frm, no
vis perm or por, infrd frac por, mod
strmng dul grnsh blu cuts w/ slw thn
strms, bri yel res rng, rr BENT, tr PYR

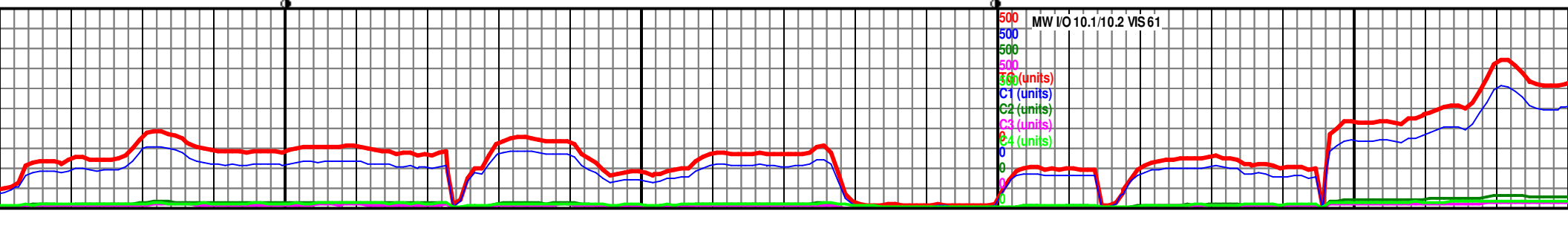
MRLSTN (90%): med-drk gry,
rthy-sbwxy, pred smth txt,
mod hrd, CHLK (30%): lt-lt
mttld, sbply-sbblky, mod
vis perm or por, infrd frac
strmng dul grnsh blu cuts
strms, bri yel res rng, rr BENT, tr PYR



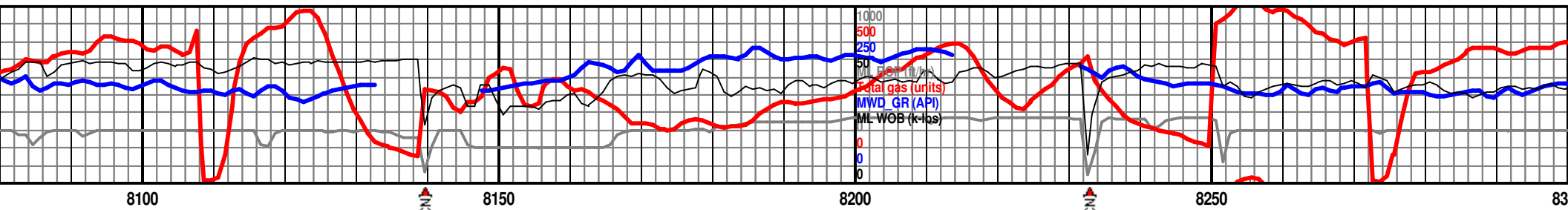
6970

7020

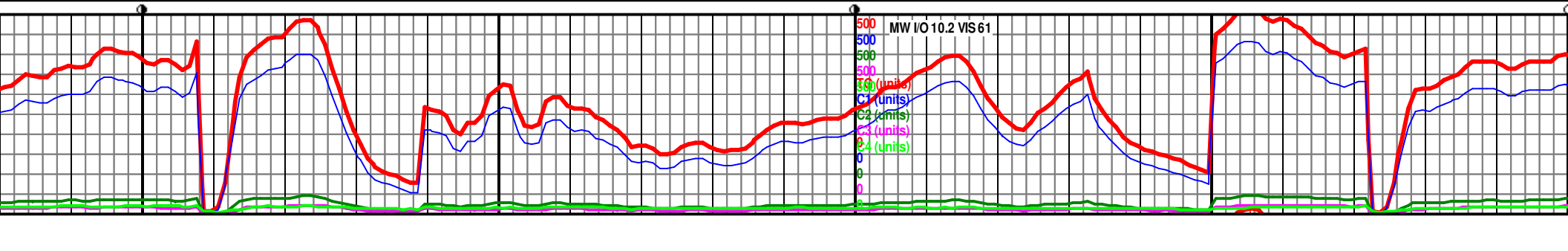
Nio A Mar

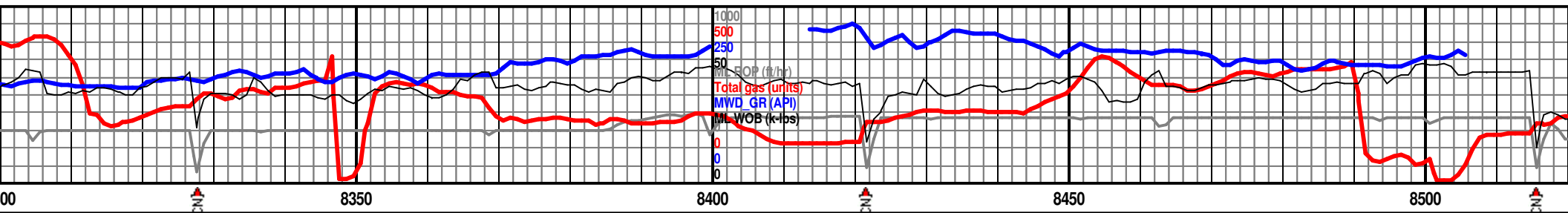


MW I/O 10.1/10.2 VIS 61

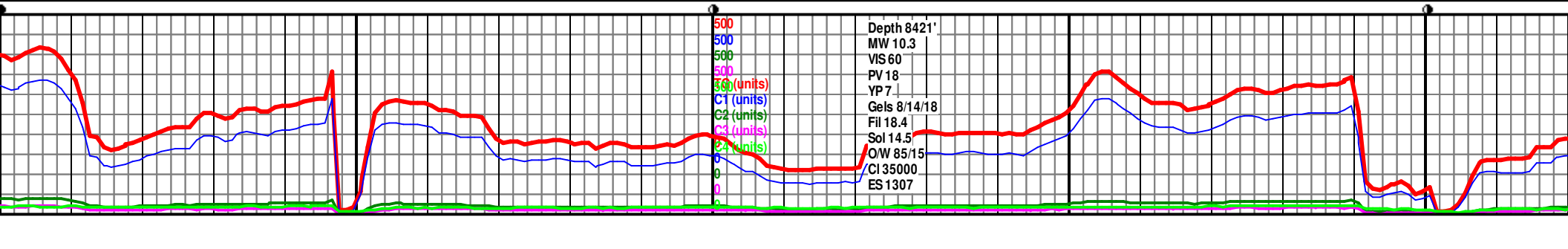


<p>MD 8114 TVD 6989.67 INC 92.22 AZ 273.48 VS 1505.64</p> <p>ry, rr grtty ip, med gry, sft-sl frm, no por, mod s w/ slw thn PYR.</p>	<p>MRLSTN (80%): med-drk gry, rthy-sbwxy, pred smth txt, rr grtty ip, mod hrd, CHLK (20%): lt-lt med gry, mttld, sbply-sbblky, mod sft-sl frm, no vis perm or por, infrd frac por, gd strmnng dul grnish blu cuts w/ slw thn strmr, bri yel res rng.</p>	<p>6920 TVD MD 8207 TVD 6987.69 INC 90.22 AZ 274.5 VS 1597.73</p> <p>6970</p> <p>7020</p>	<p>MRLSTN (70%): med-drk gry, rthy-sbwxy, pred smth txt, rr grtty ip, mod hrd, CHLK (30%): lt-lt med gry, mttld, sbply-sbblky, mod sft-sl frm, no vis perm or por, infrd frac por, g strmnng dul grnish blu cuts w/ thn strmr, bri yel grn res rng, rr BENT.</p>
--	--	---	--

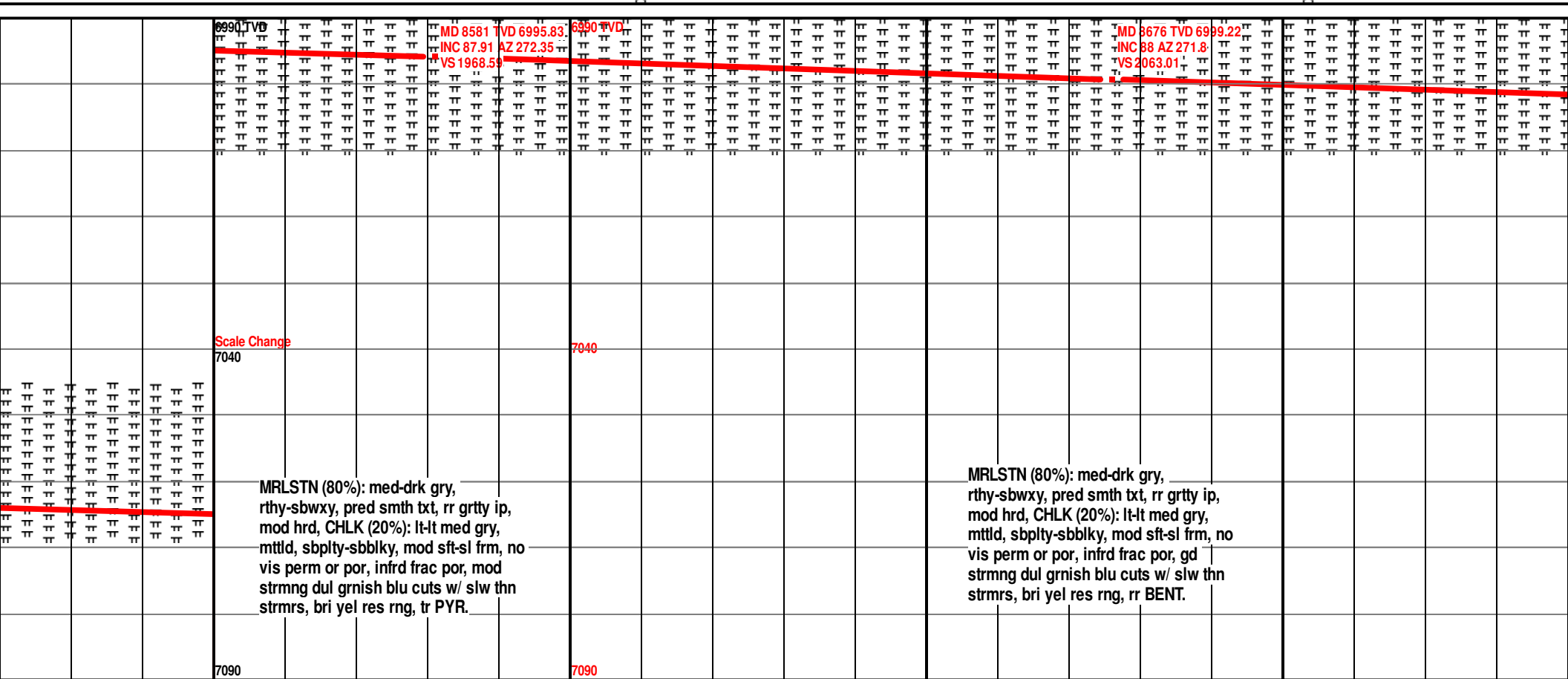
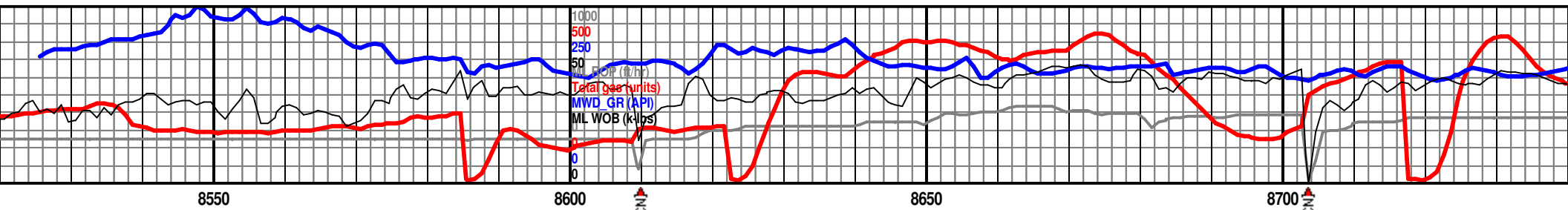




<p>MD 8301 TVD 6988.59 INC 88.68 AZ 274 VS 1690.77</p> <p>MRLSTN (80%): med-drk gry, rthy-sbwxy, pred smth txt, rr grtty ip, mod hrd, CHLK (20%): lt-lt med gry, mttld, sbplty-sbbkly, mod sft-sl frm, no vis perm or por, infrd frac por, gd strrng dul grnish blu cuts w/ slw thn strmr, bri yel grn res rng, rr BENT, tr PYR</p>	<p>MD 8394 TVD 6990.74 INC 88.68 AZ 273.28 VS 1782.93</p>	<p>MD 8488 TVD 6992.98 INC 88.58 AZ 272.68 VS 1876.22</p>	
<p>6970</p>	<p>7020</p>		<p>Nio A Mar</p>

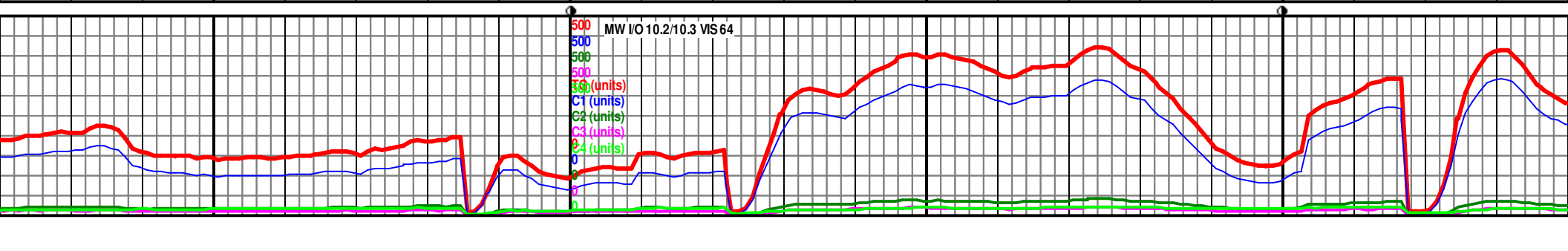


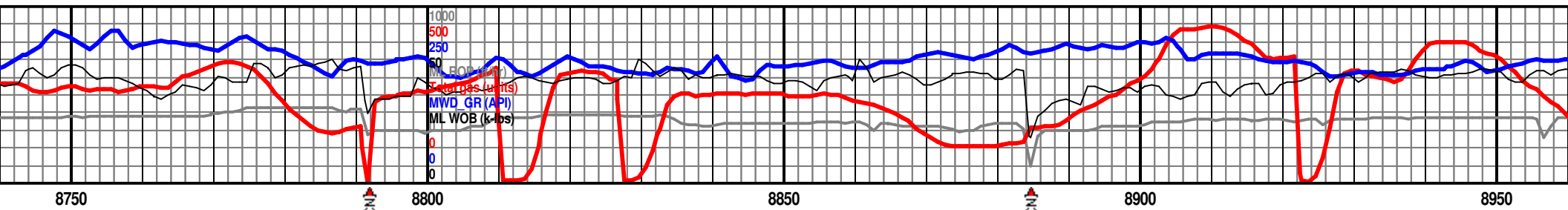
Depth 8421'
MW 10.3
VIS 60
PV 18
YP 7
Gels 8/14/18
Fil 18.4
Sol 14.5
OW 85/15
CI 35000
ES 1307



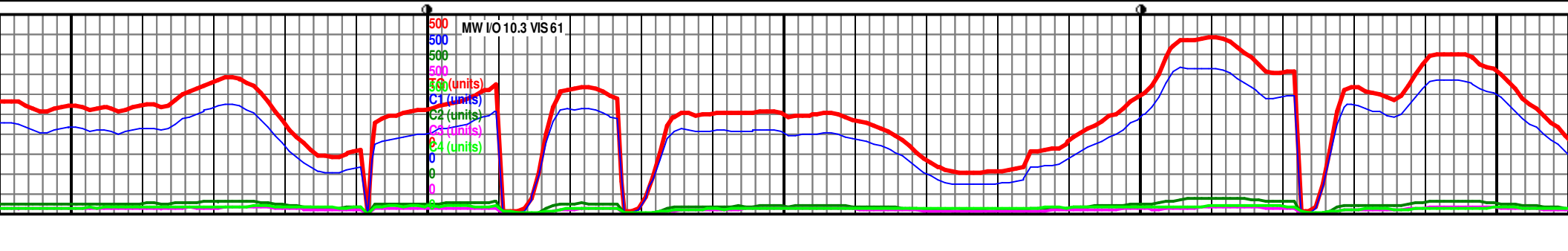
MRLSTN (80%): med-drk gry, rthy-sbwxy, pred smth txt, rr grtty ip, mod hrd, CHLK (20%): lt-lt med gry, mttld, sbplty-sbbiky, mod sft-sl frm, no vis perm or por, infrd frac por, mod strmg dul grnish blu cuts w/ slw thn strms, bri yel res rng, tr PYR.

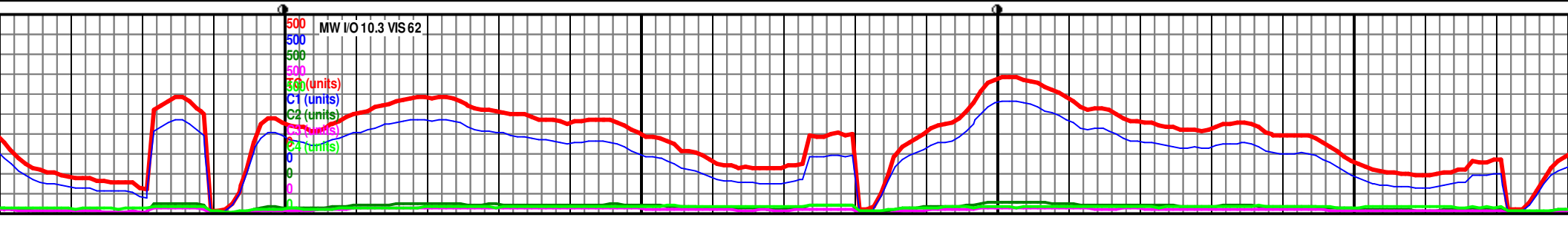
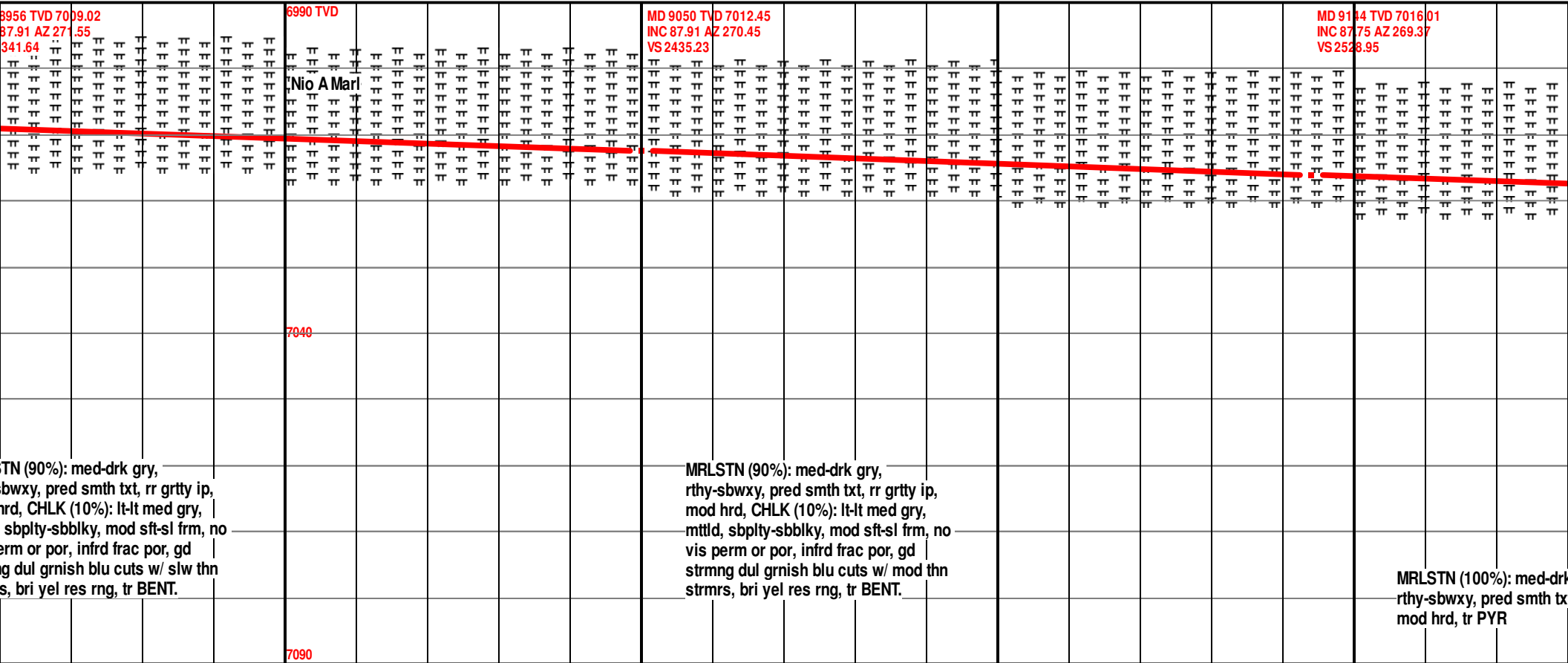
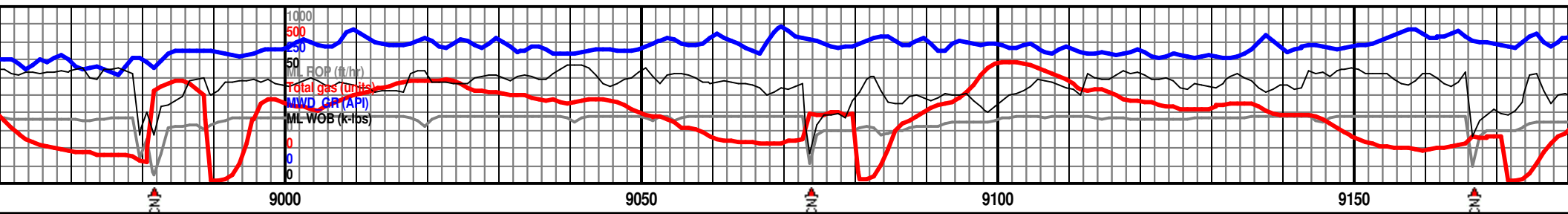
MRLSTN (80%): med-drk gry, rthy-sbwxy, pred smth txt, rr grtty ip, mod hrd, CHLK (20%): lt-lt med gry, mttld, sbplty-sbbiky, mod sft-sl frm, no vis perm or por, infrd frac por, gd strmg dul grnish blu cuts w/ slw thn strms, bri yel res rng, rr BENT.

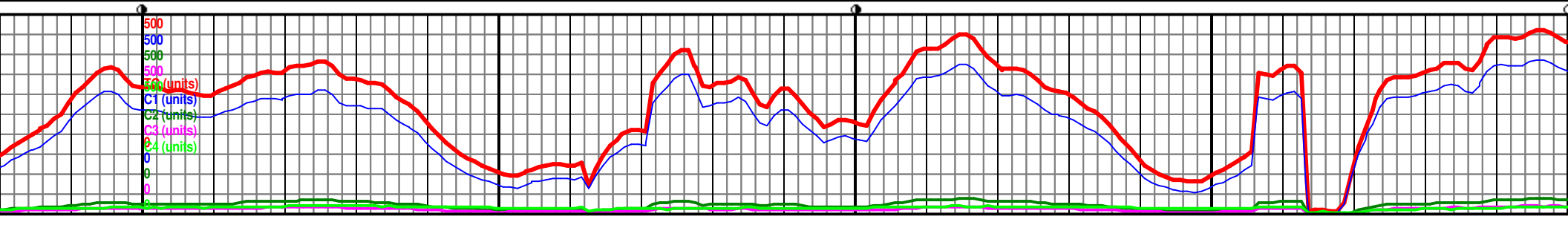
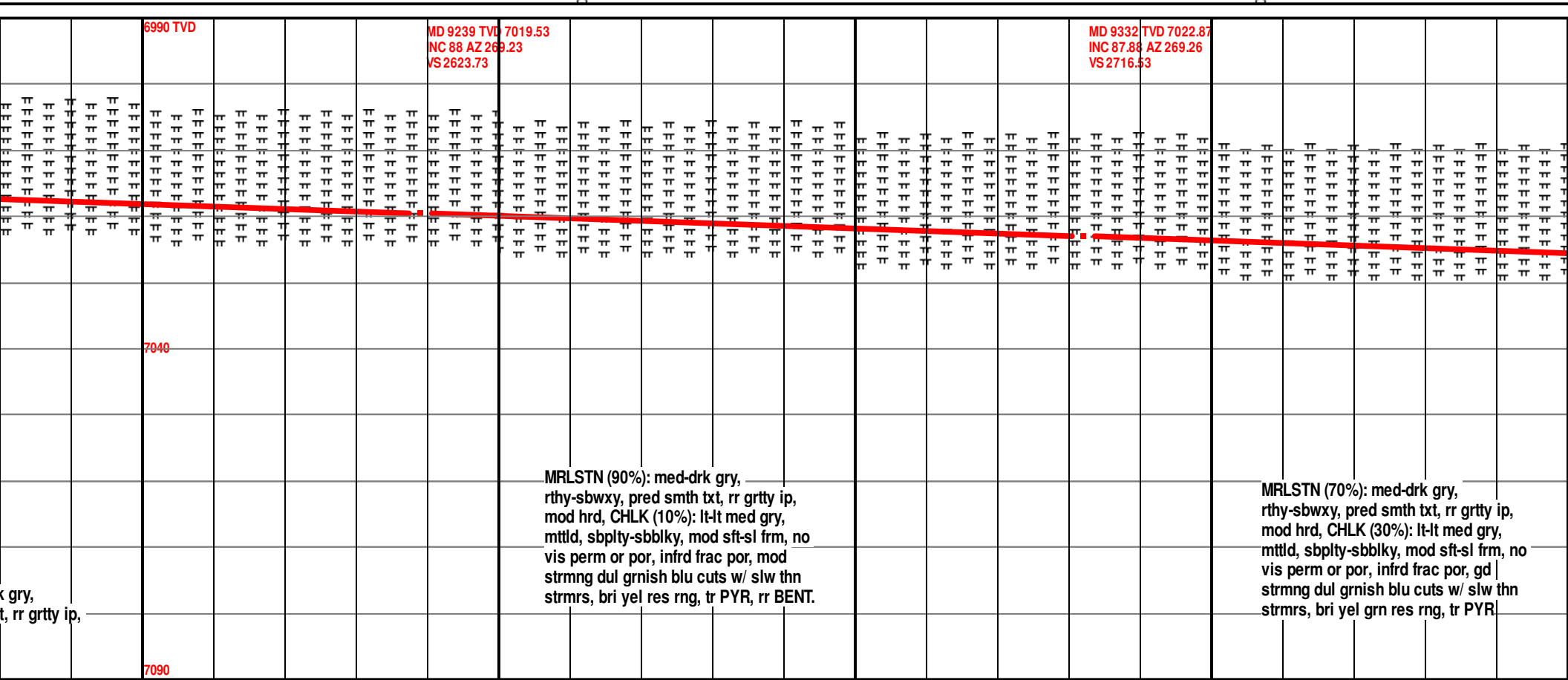
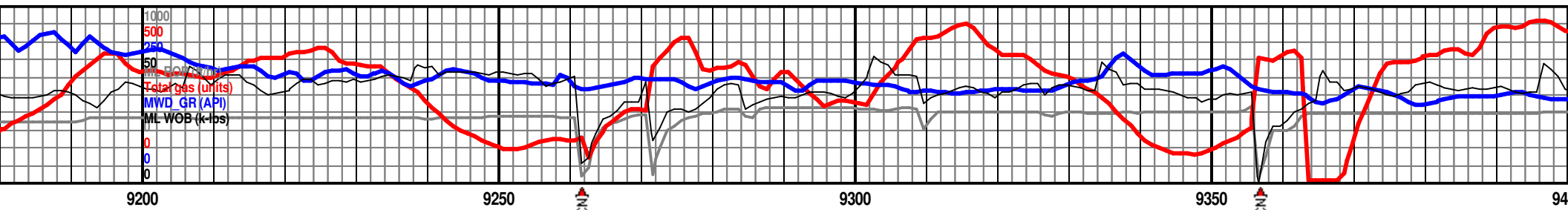


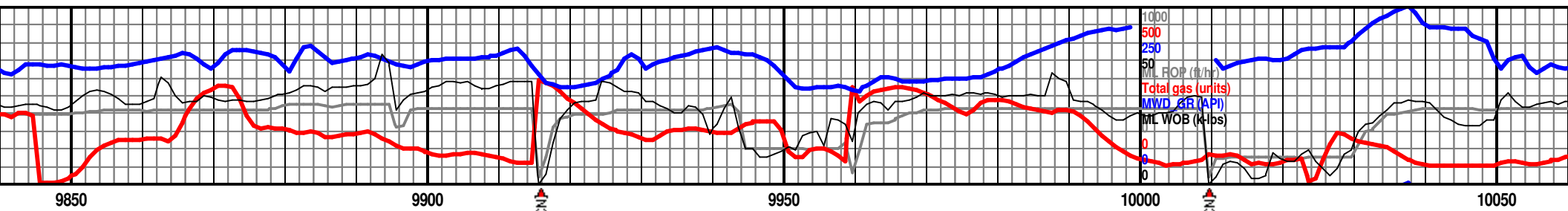


<p>MD 8768 TVD 7002.46 INC 87.97 AZ 271.39 VS 2154.53</p>	<p>6990 TVD</p>	<p>MD 8862 TVD 7005.71 INC 88.06 AZ 271.14 VS 2248.09</p>	<p>MD INC VS 2</p>
<p>MRLSTN (90%): med-drk gry, rthy-sbwxy, pred smth txt, rr grtty ip, mod hrd, CHLK (10%): lt-lt med gry, mtld, sbply-sbblky, mod sft-sl frm, no vis perm or por, infrd frac por, gd strmng dul grnish blu cuts w/ slw thn strmrs, bri yel res rng, rr BENT</p>	<p>7040</p>	<p>MRLSTN (90%): med-drk gry, rthy-sbwxy, pred smth txt, rr grtty ip, mod hrd, CHLK (10%): lt-lt med gry, mtld, sbply-sbblky, mod sft-sl frm, no vis perm or por, infrd frac por, gd strmng dul grnish blu cuts w/ slw thn strmrs, bri yel grn res rng, tr BENT.</p>	<p>MRLS rthy-s mod h mtld, vis pe strmn strmr</p>
<p>7090</p>			









MD 9892 TVD 7038.34
INC 90.12 AZ 266.11
VS 3276.1

MD 9985 TVD 7037.39 TVD
INC 91.05 AZ 266.8
VS 3369.1

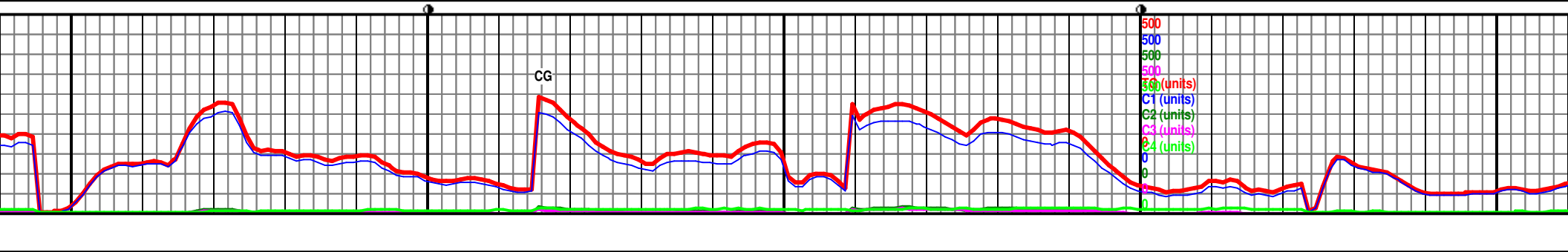
Fault #1 @ 9981' MD, ~62' Throw "Down"

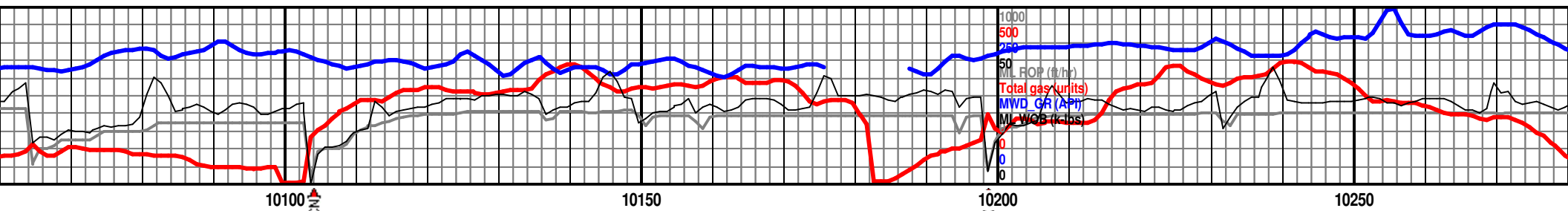
Nio A Mar

MRLSTN (70%): med-drk gry,
rthy-sbwxy, pred smth txt, rr grtty ip,
mod hrd, CHLK (30%): lt-lt med gry,
mtld, sbplty-sbblky, mod sft-sl frm, no
vis perm or por, infrd frac por, mod
strmng dul grnish blu cuts w/ slw thn
strmrs, bri yel res rng.

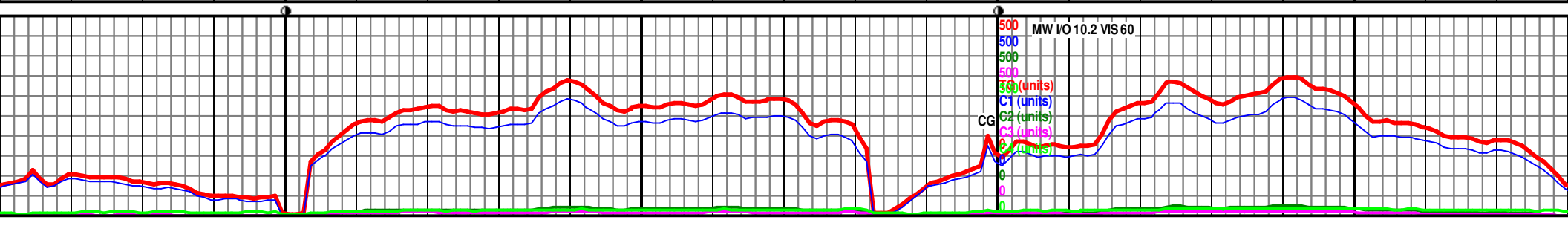
MRLSTN (70%): med-drk gry,
rthy-sbwxy, pred smth txt, rr grtty ip,
mod hrd, CHLK (30%): lt-lt med gry,
mtld, sbplty-sbblky, mod sft-sl frm, no
vis perm or por, infrd frac por, mod
strmng dul grnish blu cuts w/ slw thn
strmrs, bri yel res rng.

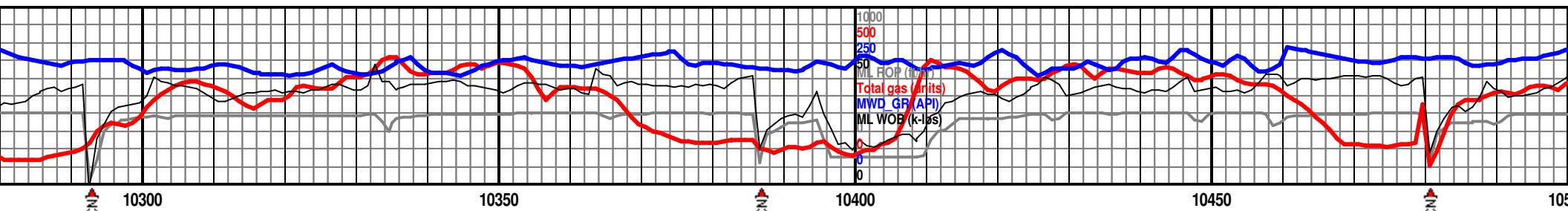
MRL
rthy-
mod
mtld
vis p
strm
strm

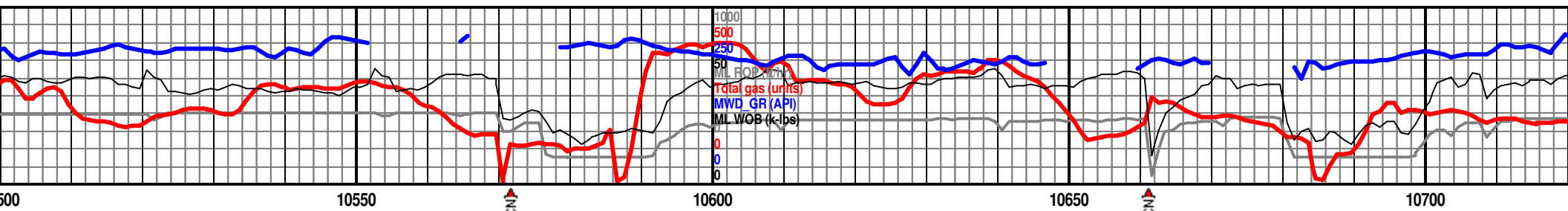
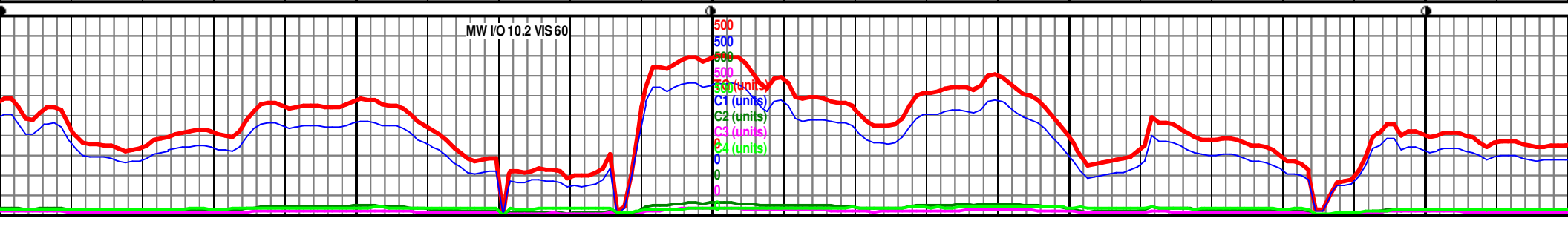


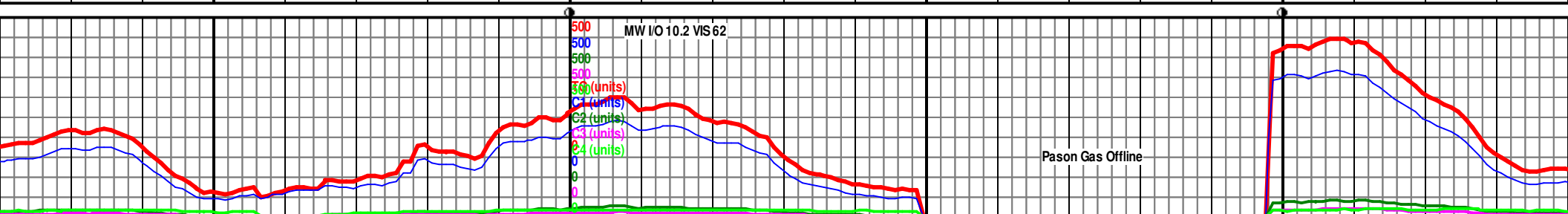
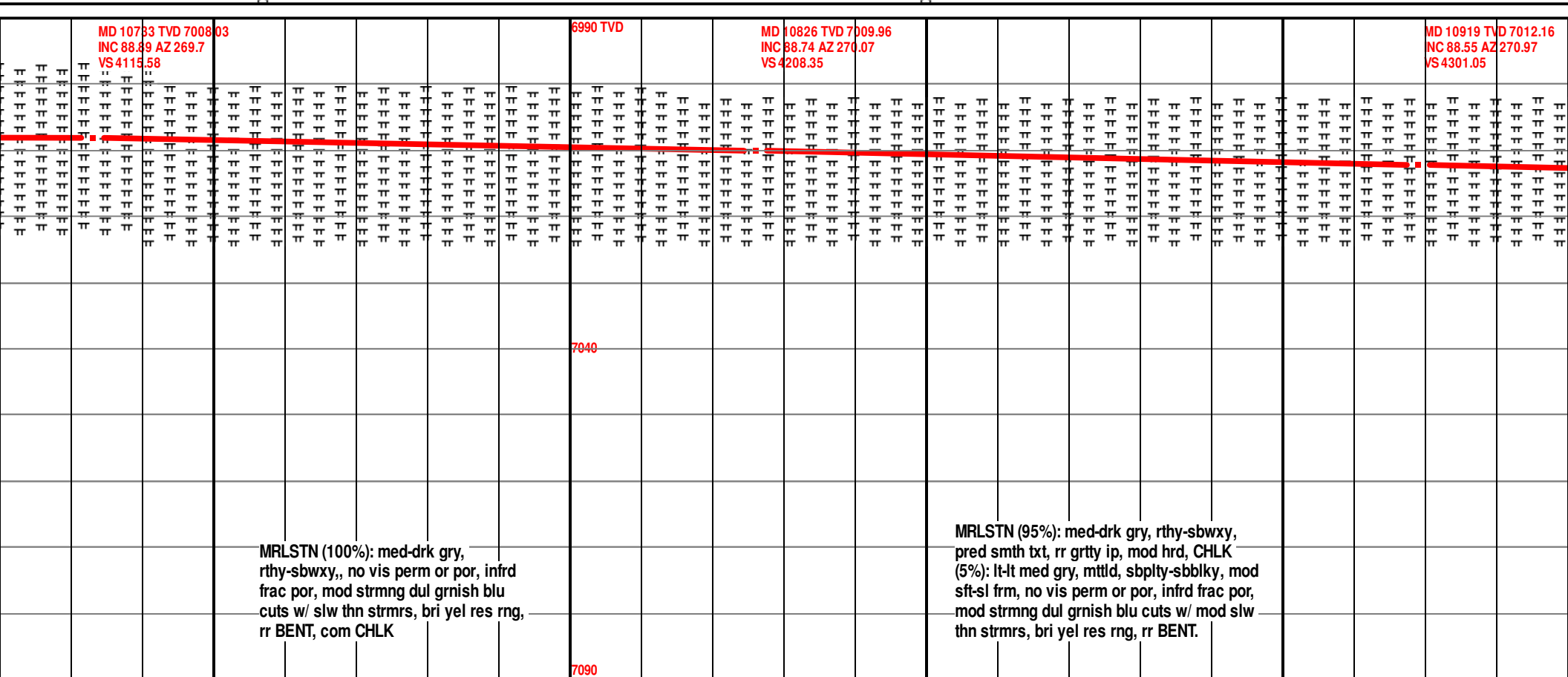


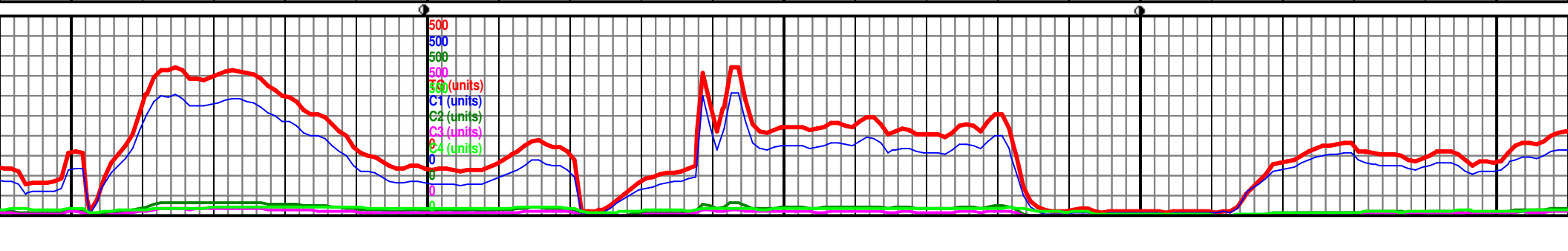
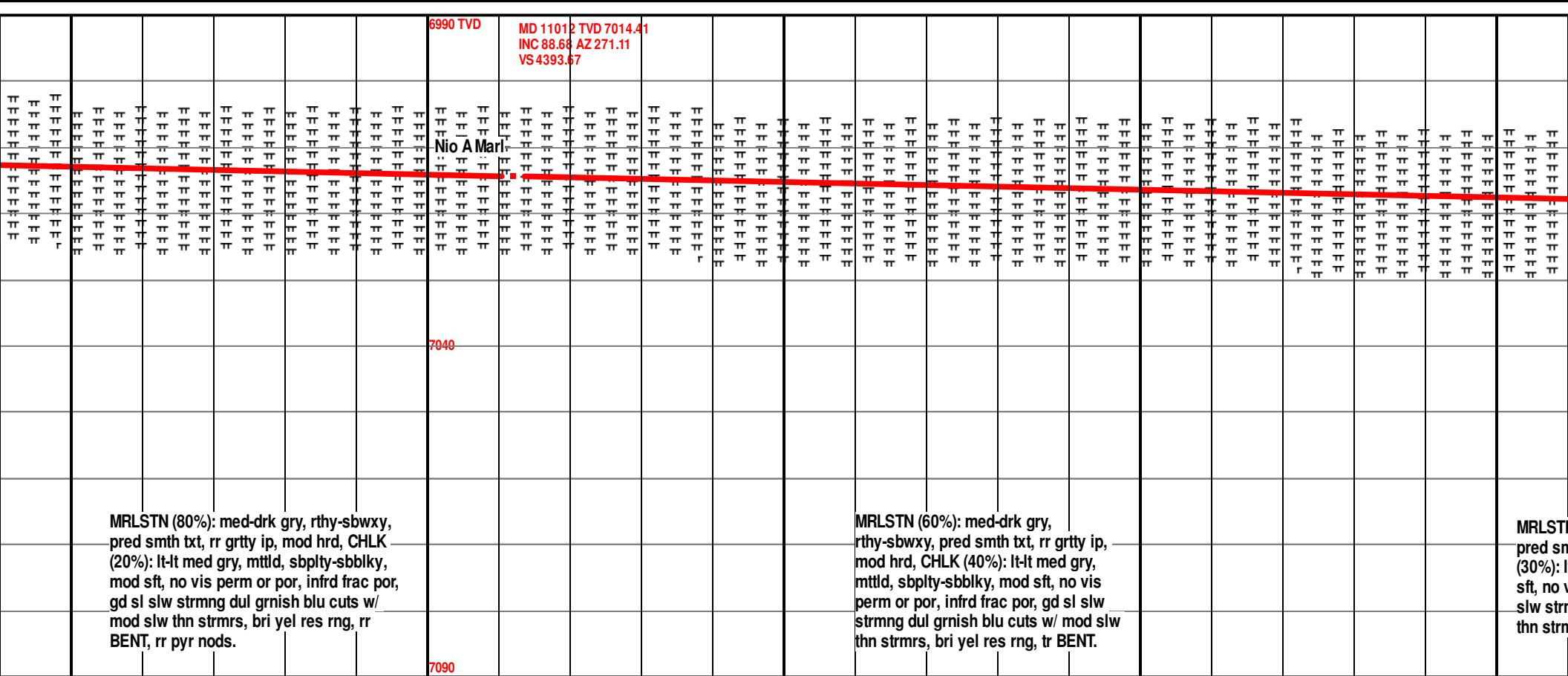
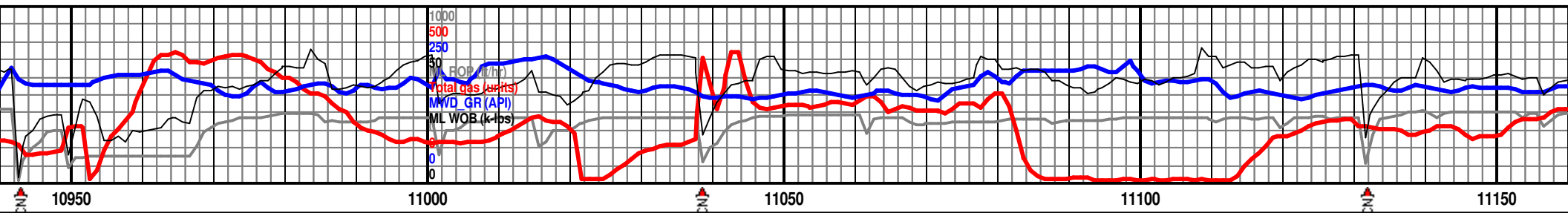
<p>MD 10078 TVD 7034.27 INC 92.8 AZ 246.77 VS 3462.05</p>		<p>MD 10172 TVD 7029.73 INC 92.74 AZ 267.75 VS 3555.91</p>	<p>6990 TVD</p>	<p>MD 10265 TVD 7034.27 INC 92.74 AZ 268.75 VS 3648.75</p>
<p>STN (80%): med-drk gry, sbwxy, pred smth txt, rr grtty ip, hrd, CHLK (20%): lt-lt med gry, sbplty-sbblky, mod sft-sl frm, no perm or por, infrd frac por, mod ng dul grnish blu cuts w/ slw thn rs, bri yel res rng, com BENT</p>		<p>MRLSTN (90%): med-drk gry, rthy-sbwxy, pred smth txt, rr grtty ip, mod hrd, CHLK (10%): lt-lt med gry, mtld, sbplty-sbblky, mod sft-sl frm, no vis perm or por, infrd frac por, gd strmgng dul grnish blu cuts w/ occ thn strmr, bri yel sl grn res rng, rr BENT.</p>	<p>7040</p>	<p>MRLSTN (80%): med-drk gry, pred smth txt, rr grtty ip, m (20%): lt-lt med gry, mtld, s mod sft-sl frm, no vis perm or, gd strmgng dul grnish b strmr, bri yel res rng, tr B</p>

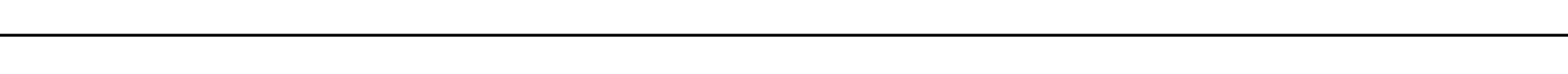
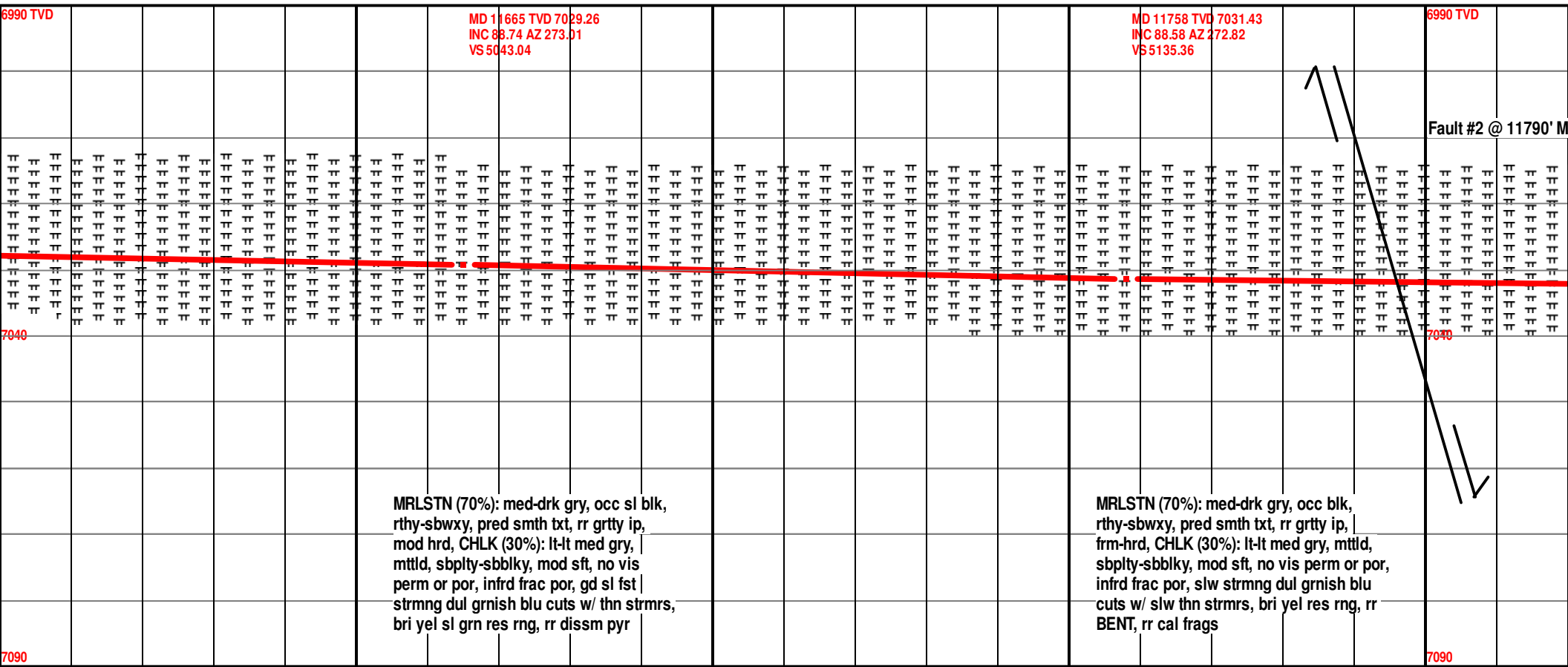


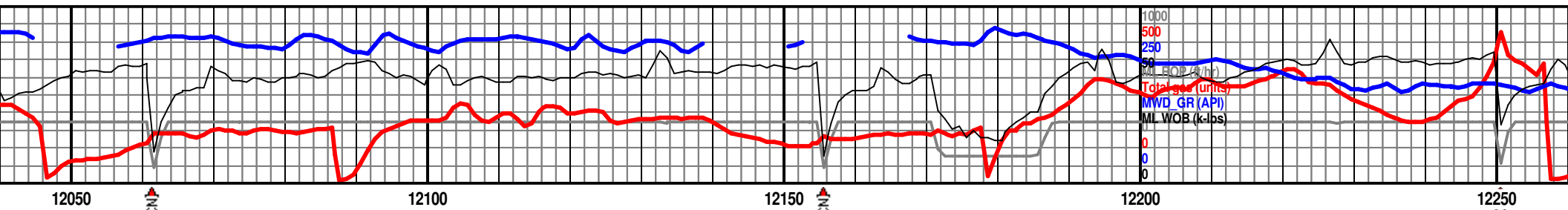
[illegible]

[illegible]







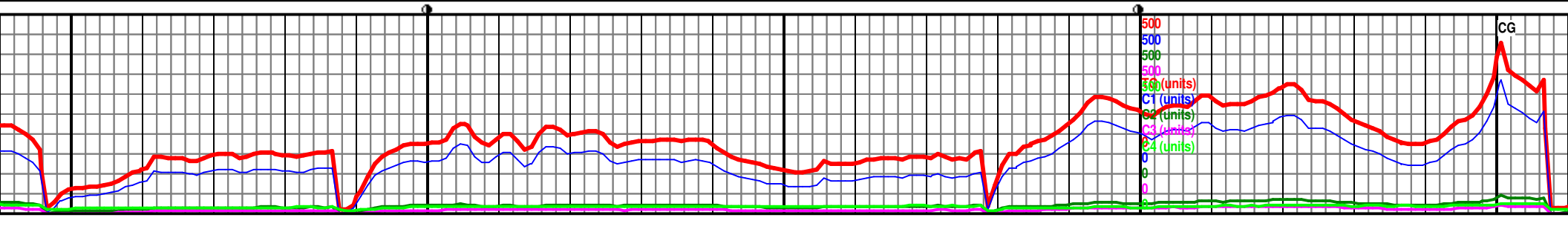
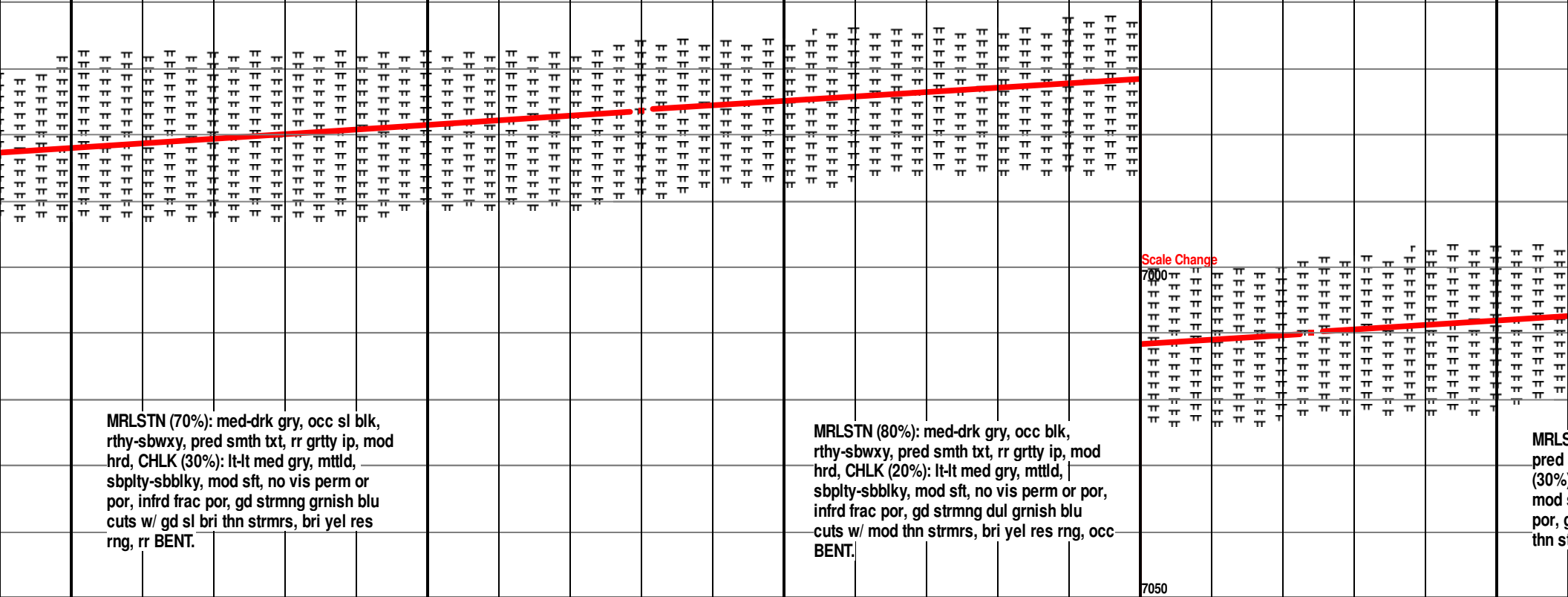


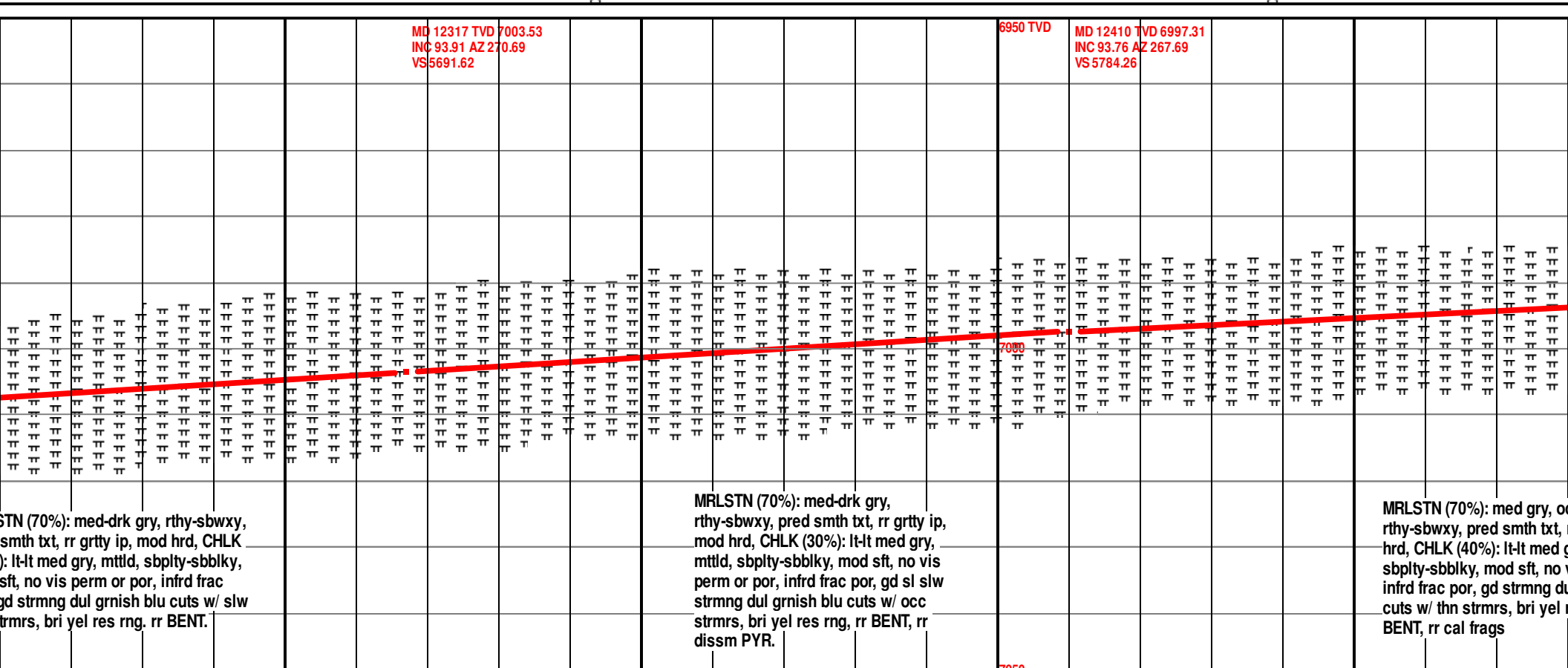
12037 TVD 7023
INC 94.13 AZ 249.85
VS 5413.18

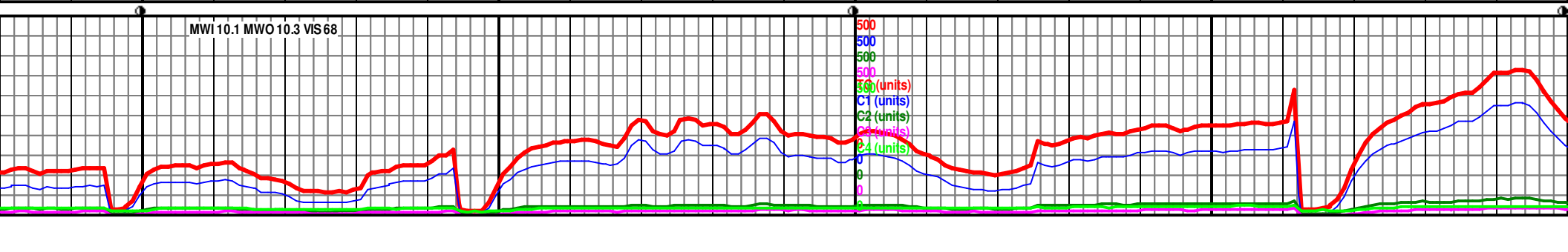
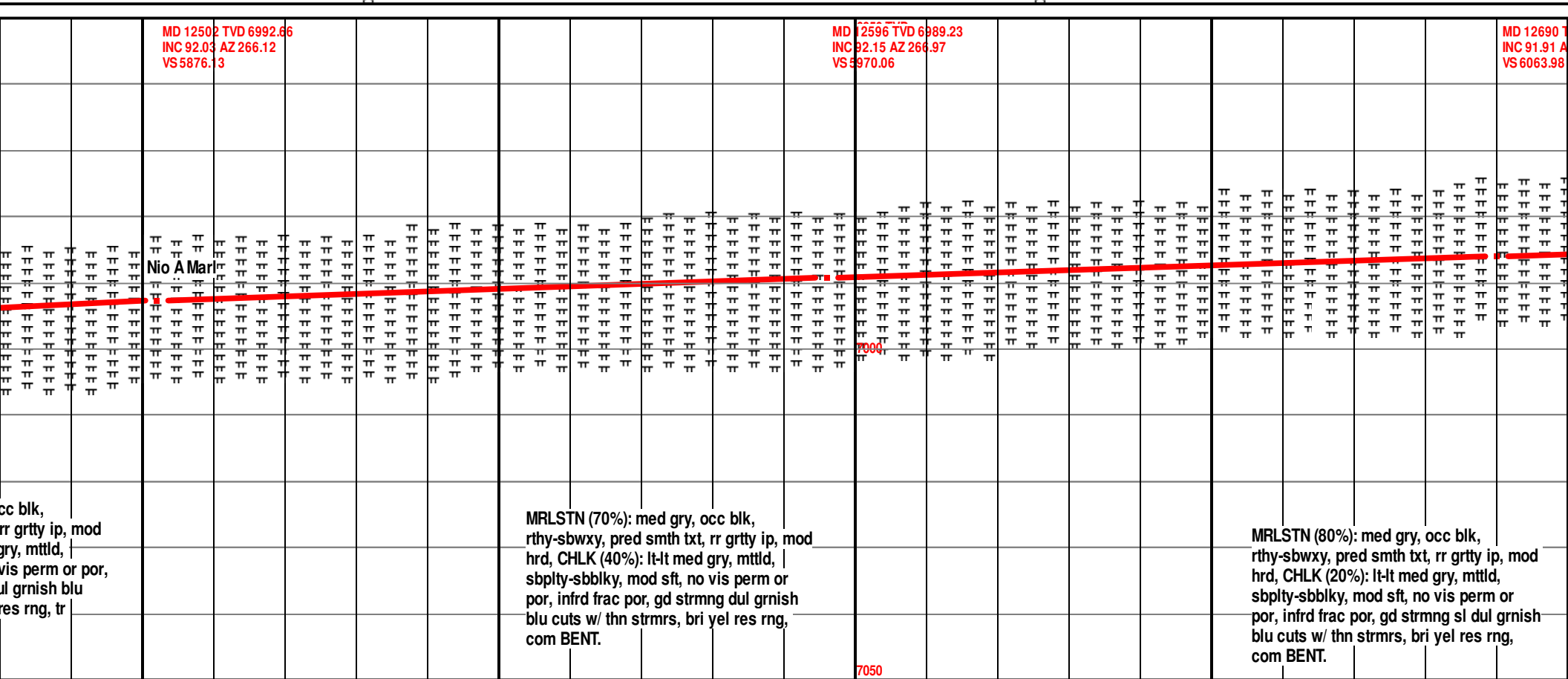
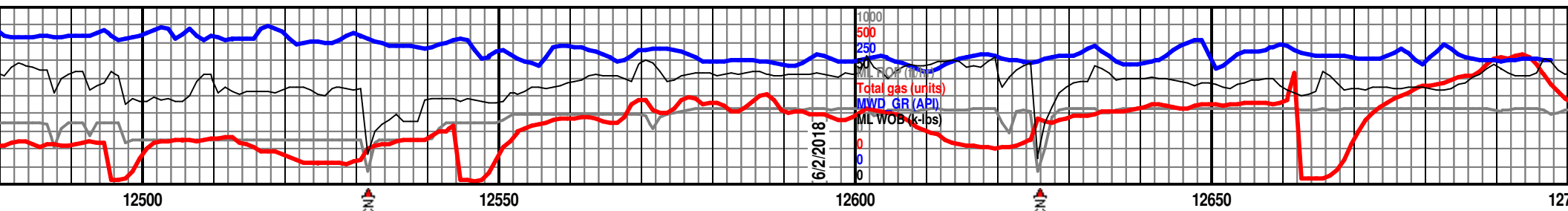
MD 12130 TVD 7016.4
INC 94 AZ 270.67
VS 5505.7

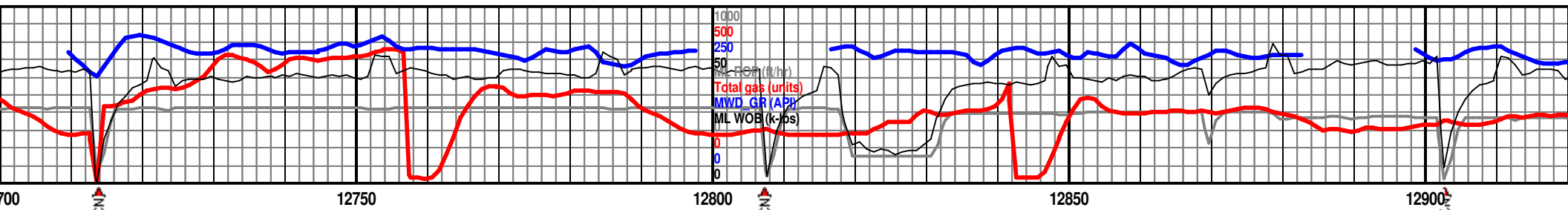
6950 TVD

MD 12224 TVD 7009.9
INC 93.94 AZ 270.92
VS 5599.15







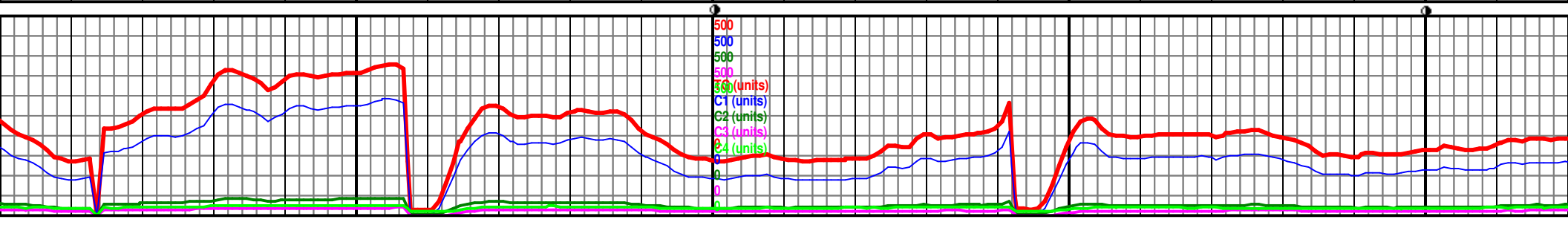


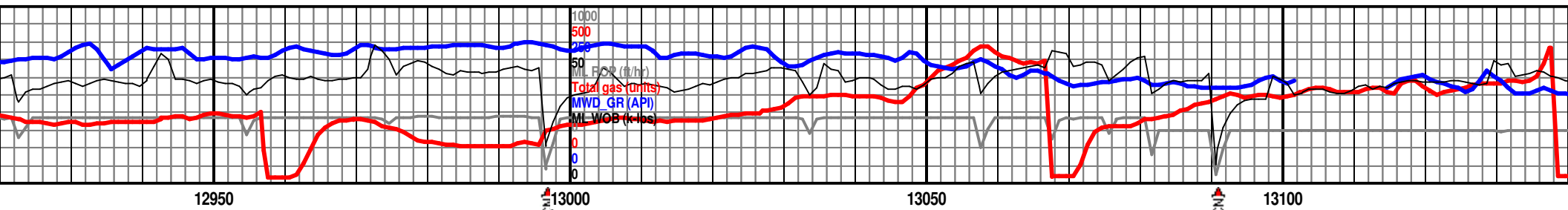
VD 6985.9
2 267.91

MD 12783 TVD 6982
INC 92.03 AZ 269.65
VS 6156.82

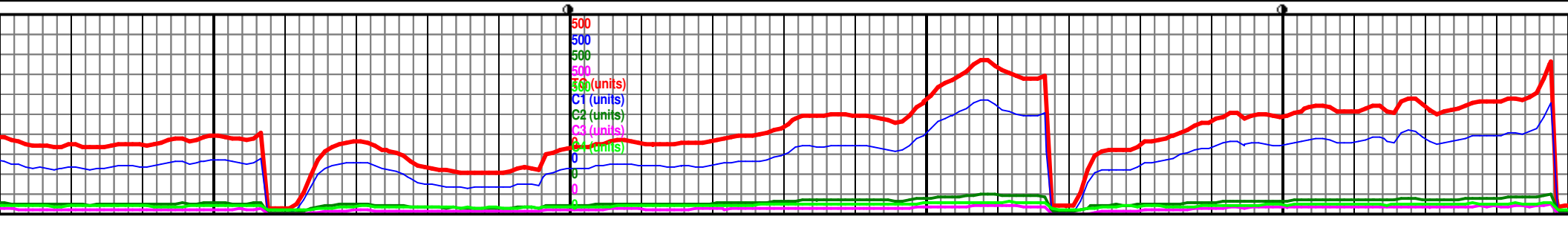
MD 12876 TVD 6979.69
INC 91.69 AZ 269.01
VS 6249.62

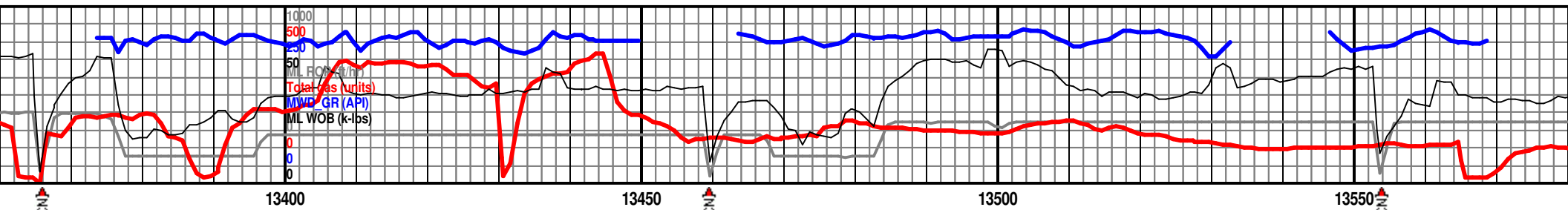
MRLSTN (80%): med-dk gry, occ blk, rthy-sbwxy, pred smth txt, rr grtty ip, mod hrd, CHLK (20%): lt-lt med gry, mttld, sbply-sbblky, mod sft, no vis perm or por, inprd frac por, gd strmgng sl dul grnsh blu cuts w/ thn strms, bri yel res rng, com BENT.									
MRLSTN (80%): med-dk gry, occ blk, rthy-sbwxy, pred smth txt, rr grtty ip, mod hrd, CHLK (20%): lt-lt med gry, mttld, sbply-sbblky, mod sft, no vis perm or por, inprd frac por, gd strmgng sl dul grnsh blu cuts w/ thn strms, bri yel res rng, com BENT.									



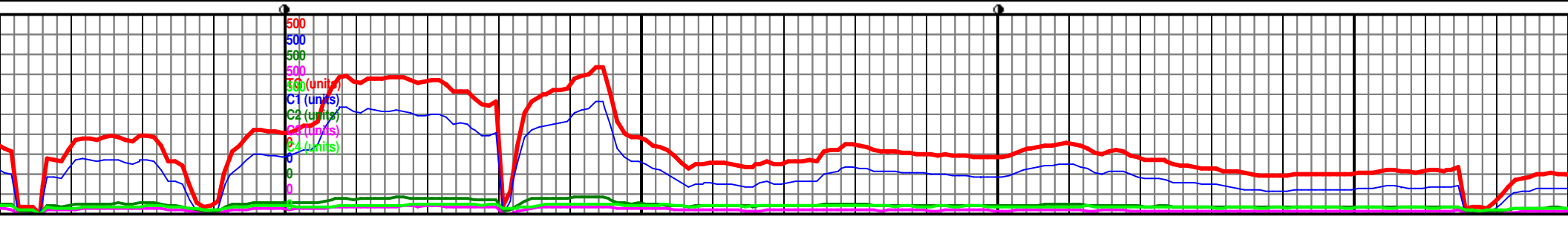


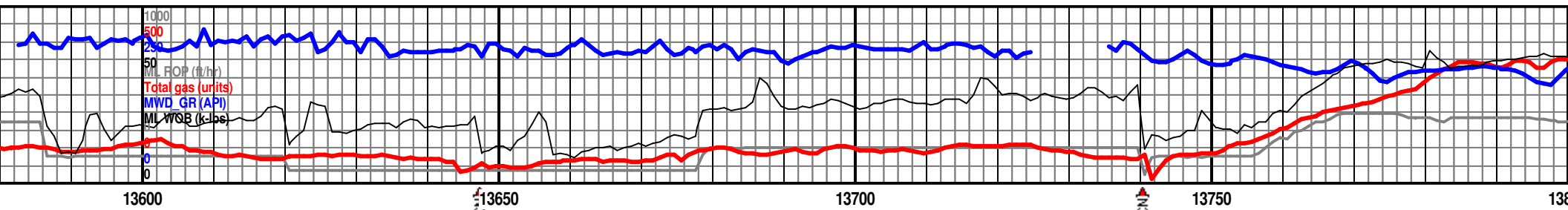
MD 12970 TVD 6976.73 INC 91.91 AZ 270.56 VS 6343.37										MD 13063 TVD 6973.63 INC 91.91 AZ 271.35 VS 6435.98									
Nio A Marl										Nio A Marl									
7000										7000									
MRLSTN (90%): med-dk gry, occ blk, rthy-sbwxy, pred smth txt, rr grtty ip, mod hrd, CHLK (10%): lt-lt med gry, mtlld, sbpity-sbblky, mod sft, no vis perm or por, infrd frac por, gd strrng sl dul grnish blu cuts w/ thn strrms, bri yel res rng, com BENT.										MRLSTN (80%): med-dk gry, occ blk, rthy-sbwxy, pred smth txt, rr grtty ip, mod hrd, CHLK (20%): lt-lt med gry, mtlld, sbpity-sbblky, mod sft, no vis perm or por, infrd frac por, gd strrng sl dul grnish blu cuts w/ thn strrms, bri yel res rng, com BENT.									
7050										7050									



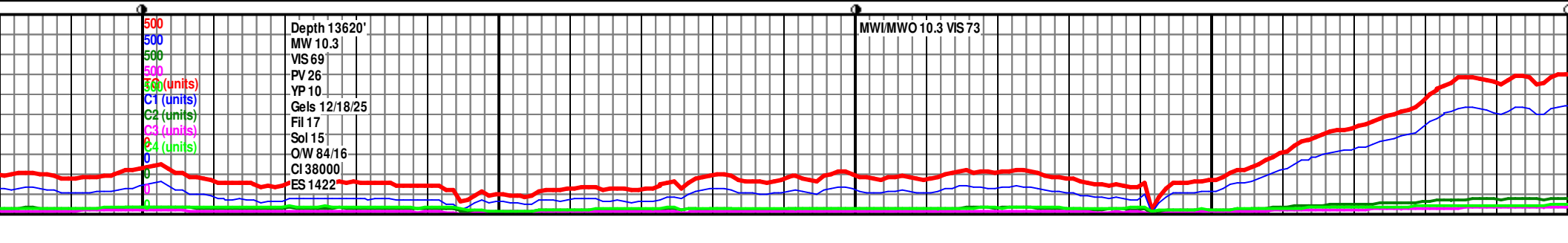


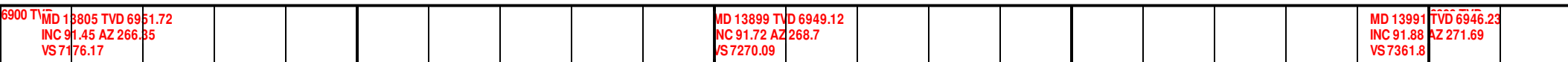
<p>STN (95%): med-dk gry, occ blk, sbwxy, pred smth txt, rr grtty ip, hrd, CHLK (5%): lt-lt med gry, sbpity-sbbiky, mod sft, no vis perm or por, infrd frac por, gd strrng sl, rnish blu cuts w/ thn strmr, bri es rng, tr PYR.</p>	<p>6900 TVD</p>	<p>MD 13434 TVD 6962.88 INC 91.66 AZ 264.85 VS 6806.42</p>	<p>MRLSTN (90%): med-dk gry, occ blk, rthy-sbwxy, pred smth txt, rr grtty ip, mod hrd, CHLK (10%): lt-lt med gry, mttld, sbpity-sbbiky, mod sft, no vis perm or por, infrd frac por, gd strrng sl, dul grnish blu cuts w/ thn strmr, bri yel res rng, tr PYR.</p>	<p>MD 13527 TVD 6959.96 INC 91.94 AZ 245.98 VS 6899.36</p>	<p>MRLSTN (90%): med-dk gry, occ blk, rthy-sbwxy, pred smth txt, rr grtty ip, mod hrd, CHLK (10%): lt-lt med gry, mttld, sbpity-sbbiky, mod sft, no vis perm or por, infrd frac por, gd strrng sl, dul grnish blu cuts w/ thn strmr, bri yel res rng, tr PYR.</p>
<p>6950</p>	<p>6950</p>				
	<p>7000</p>				





6900 TVD	MD 13620 TVD 6957.1 INC 91.57 AZ 256.32 VS 6991.87		MD 13713 TVD 6954.35 INC 91.82 AZ 263.58 VS 7084.23	
ry, occ blk, t, rr grtty ip, t med gry, sft, no vis or, gd strrng sl n strrms, bri		MRLSTN (90%): med-dk gry, occ blk, rthy-sbwxy, pred smth txt, rr grtty ip, mod hrd, CHLK (10%): lt-lt med gry, mttld, sbpity-sbblky, mod sft, no vis perm or por, infrd frac por, gd strrng sl dul grnish blu cuts w/ thn strrms, bri yel res rng, tr PYR.		MRLSTN (90%): med-dk gry, occ blk, rthy-sbwxy, pred smth txt, rr grtty ip, mod hrd, CHLK (10%): lt-lt med gry, mttld, sbpity-sbblky, mod sft, no vis perm or por, infrd frac por, gd strrng sl dul grnish blu cuts w/ thn strrms, bri yel res rng, tr PYR.
6950				





MRLSTN (90%): med-dk gry, occ blk,
rthy-sbwxy, pred smth txt, rr grtty ip,
mod hrd, CHLK (10%): lt-lt med gry,
mtltd, sbpty-sbbkly, mod sft, no vis
perm or por, inlrd frac por, gd strrng sl
dul grnish blk cuts w/ thn strrms, bri
yel res rng, tr PYR.

