

May 15, 2018

Colorado Oil and Gas Conservation Commission  
The Chancery Building  
1120 Lincoln Street, Suite 801  
Denver, CO 80203  
Attn: Ms. Julie Murphy, Director

RE: **30 Day Certification Letter – 318A.e**  
Guttersen Y05-756 (Doc No. 401628625)  
Weld County, Colorado  
Township 3 North, Range 64 West, 6<sup>th</sup> P.M.  
Section 29: SENW  
Unit Acreage: 955.700  
Unit Spacing: T2N-R64W, Sec. 5: E/2W/2, W/2E/2; Sec. 8: NE/4NW/4, NW/4NE/4; T3N-R64W, Sec.  
29: W/2SE/4, E/2SW/4, SE/4NW/4, SW/4NE/4; Sec. 32: E/2W/2, W/2E/2

Dear Director,

Nobel Energy, Inc. ("NEI") hereby certifies that a thirty (30) day notice has been given by certified mail to all mineral owners in the proposed wellbore spacing unit. We have not received any objections to this spacing unit or location. NEI hereby respectfully requests approval of this well.

If you have any questions or issues regarding this permit, please contact me at (281) 943-1940, or [brittany.mcfadden@nblenergy.com](mailto:brittany.mcfadden@nblenergy.com).

Respectfully,

*Brittany McFadden*

Brittany McFadden  
Regulatory Analyst  
Noble Energy Inc.

### Bottom Hole Location

## WELL LOCATION CERTIFICATE

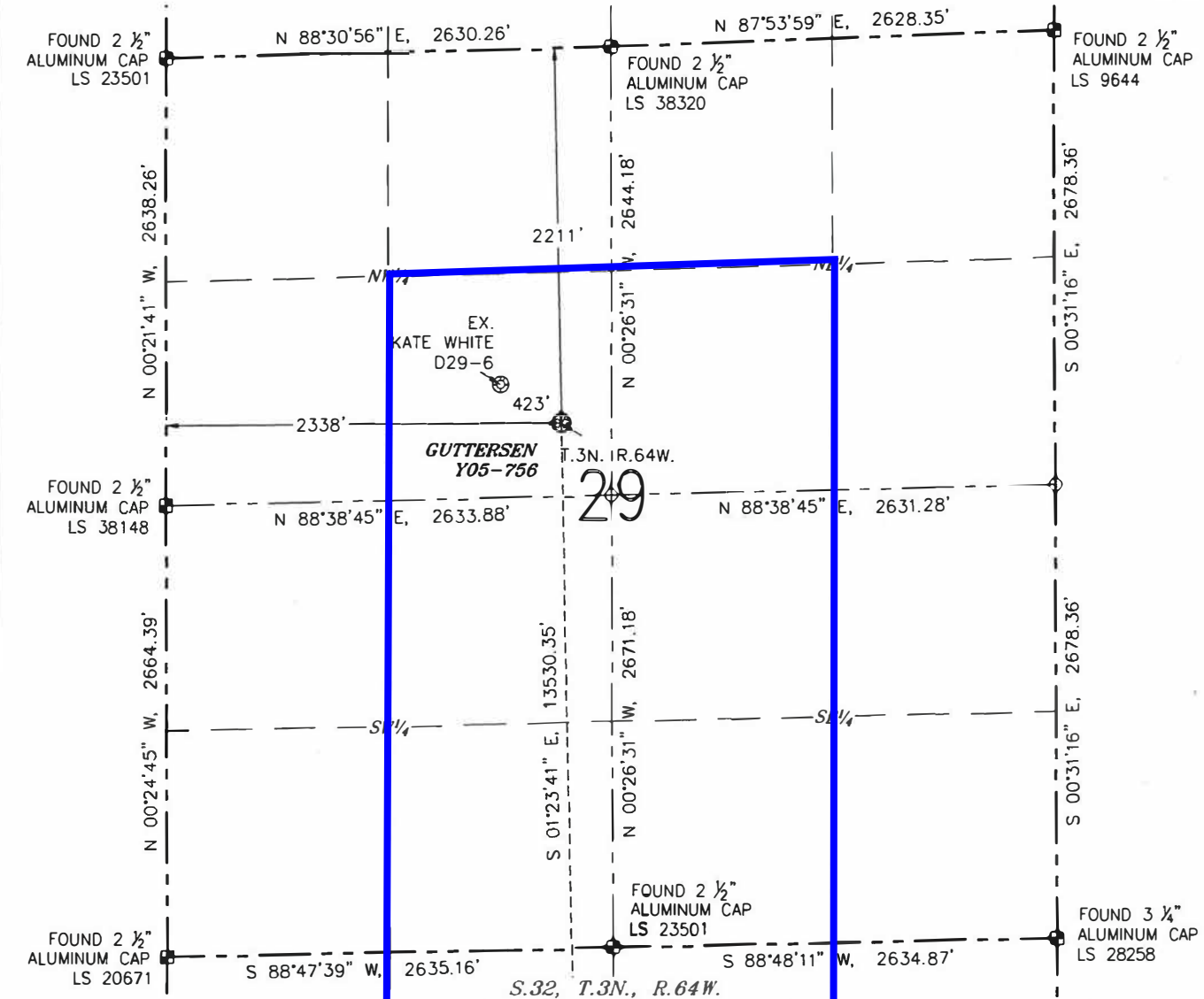
GUTTERSEN.Y05-756

(SHEET 1 OF 3)

SECTION: 29

TOWNSHIP: 3N

RANGE: 64W



## NOTES:

1. BEARINGS ARE GRID BEARINGS OF THE COLORADO STATE PLANE COORDINATE SYSTEM, NORTH ZONE, NAD 83. THE LINEAL DIMENSIONS SHOWN HEREON ARE BASED UPON THE "U.S. SURVEY FOOT".
2. GROUND ELEVATIONS ARE BASED UPON NGS OPUS SOLUTION NAVD 88 DATUM COMPUTED USING GEOID09.
3. IMPROVEMENTS: SEE LOCATION DRAWING FOR ALL VISIBLE IMPROVEMENTS WITHIN 500' OF THE DISTURBED AREA.
4. SURFACE USE: RANGELAND.
5. INSTRUMENT OPERATOR: JASON DOW-PETERSON.
6. THE NEAREST EXISTING WELL: KATE WHITE D29-6, 423' NW.

IN ACCORDANCE WITH A REQUEST FROM MATT CAMPBELL WITH NOBLE ENERGY INC., R&R ENGINEERS-SURVEYORS, INC. HAS DETERMINED THE SURFACE HOLE LOCATION OF THE GUTTERSEN Y05-756 WELL TO BE 2211' FROM THE NORTH LINE AND 2338' FROM THE WEST LINE AS MEASURED AT RIGHT ANGLES FROM THE SECTION LINES OF SECTION 29, TOWNSHIP 3 NORTH, RANGE 64 WEST, AND THE BOTTOM HOLE LOCATION TO BE 75' FROM THE SOUTH LINE AND 2552' FROM THE WEST LINE AS MEASURED AT RIGHT ANGLES FROM THE SECTION LINES OF SECTION 5, TOWNSHIP 2 NORTH, RANGE 64 WEST OF THE 6TH PRINCIPAL MERIDIAN, WELD COUNTY, COLORADO.

I HEREBY CERTIFY THAT THIS WELL LOCATION CERTIFICATE WAS PREPARED BY ME, OR UNDER MY DIRECT SUPERVISION, THAT THE FIELD WORK WAS COMPLETED ON 02/21/2018 FOR AND ON BEHALF OF NOBLE ENERGY INC., THAT IT IS NOT A LAND SURVEY PLAT OR AN IMPROVEMENT SURVEY PLAT AND THAT IT IS NOT TO BE RELIED UPON FOR ESTABLISHMENT OF FENCES, BUILDINGS, OR OTHER FUTURE IMPROVEMENT LINES.

## SURFACE HOLE LOCATION

LATITUDE: N 40.19748°  
 LONGITUDE: W 104.57621°  
 PDOP: 1.4  
 ELEVATION: 4780'  
 1/4-1/4: SE 1/4 NW 1/4

## BOTTOM HOLE LOCATION

LATITUDE: N 40.16134°  
 LONGITUDE: W 104.57553°

## LEGEND

- ⊗ PROPOSED WELL
- ⊙ EXISTING WELL
- BOTTOM HOLE
- FOUND MONUMENT
- CALCULATED POSITION



0 1000'  
 SCALE: 1" = 1000'

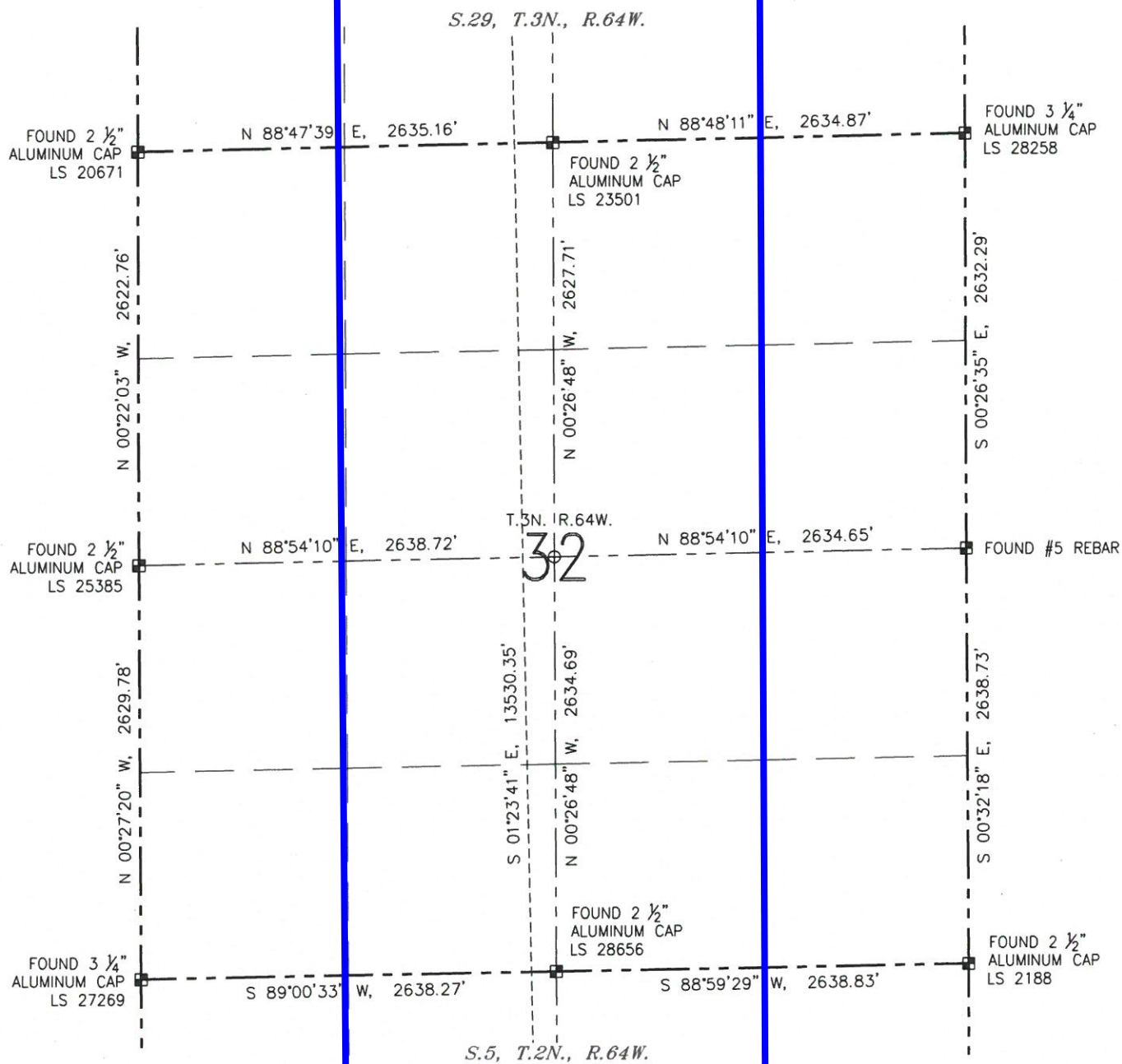


STACY LYNN BALZER, PLS 38495  
 FOR AND ON BEHALF OF R&R ENGINEERS-SURVEYORS, INC. DATE: 03/15/2018  
 JOB #: NE17302

## WELL LOCATION CERTIFICATE

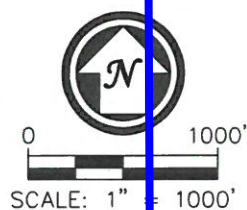
GUTTERSEN Y05-756

(SHEET 2 OF 3)

SECTION: 29  
TOWNSHIP: 3N  
RANGE: 64W

## LEGEND

- ⊗ PROPOSED WELL
- ⊙ EXISTING WELL
- ⊙ BOTTOM HOLE
- ⊙ FOUND MONUMENT
- CALCULATED POSITION

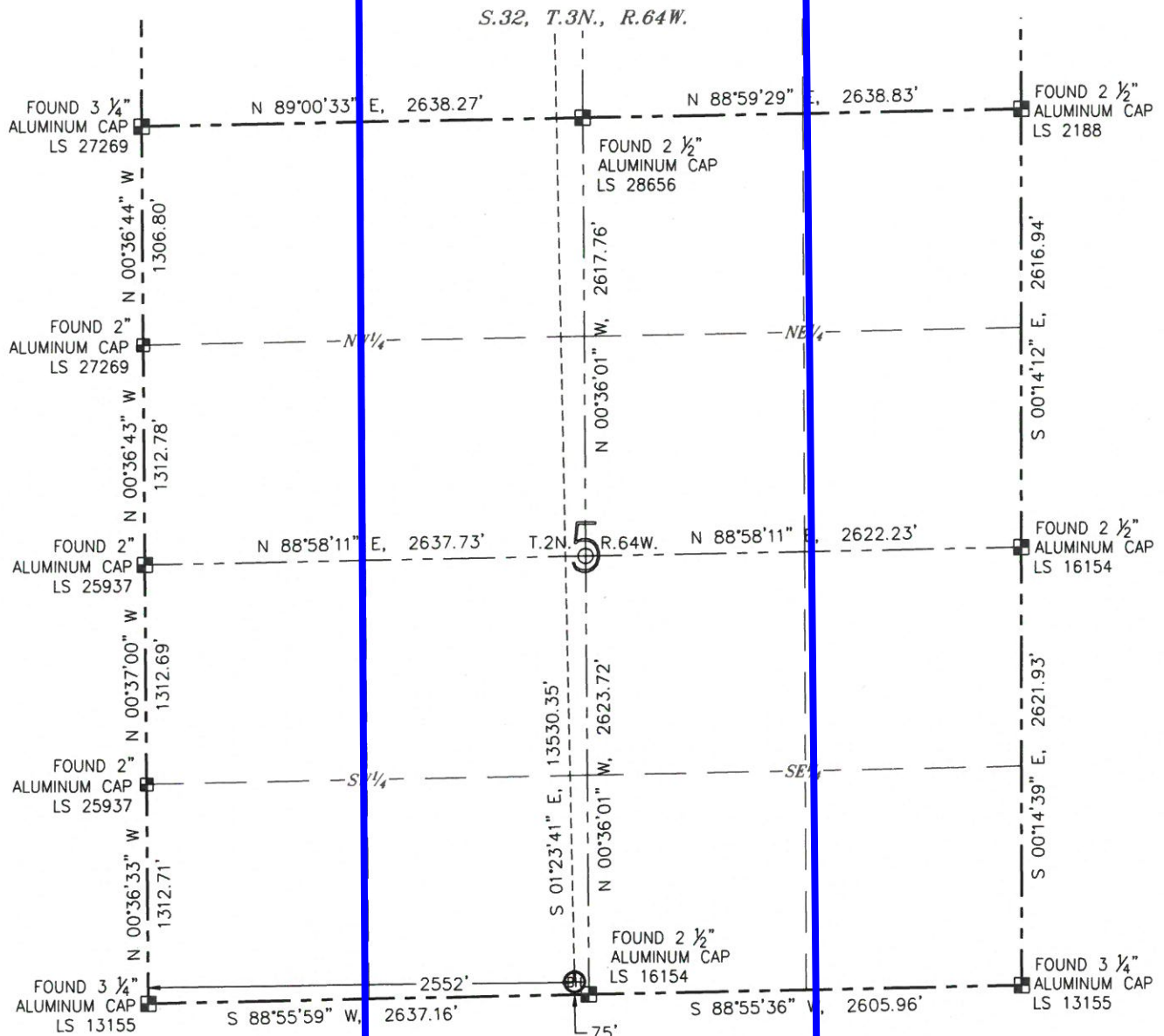
DATE: 03/15/2018  
JOB #: NE17302



## WELL LOCATION CERTIFICATE

GUTTERSEN Y05-756

(SHEET 3 OF 3)

SECTION: 29  
TOWNSHIP: 3N  
RANGE: 64W

## LEGEND

- ⊗ PROPOSED WELL
- ⊙ EXISTING WELL
- ⊙ BOTTOM HOLE
- ⊠ FOUND MONUMENT
- CALCULATED POSITION



0 1000'

SCALE: 1" = 1000'