

May 15, 2018

Colorado Oil and Gas Conservation Commission
The Chancery Building
1120 Lincoln Street, Suite 801
Denver, CO 80203
Attn: Ms. Julie Murphy, Director

RE: **30 Day Certification Letter – 318A.e**
Guttersen Y05-771 (Doc No. 401628619)
Weld County, Colorado
Township 3 North, Range 64 West, 6th P.M.
Section 29: SWNW
Unit Acreage: 478.422
Unit Spacing: T2N-R64W, Sec.5: E/2W/2; Sec. 8: NE/4NW/4; T3N-R64W, Sec. 29: SE/4NW/4,
E/2SW/4; Sec. 32: E/2W/2

Dear Director,

Nobel Energy, Inc. ("NEI") hereby certifies that a thirty (30) day notice has been given by certified mail to all mineral owners in the proposed wellbore spacing unit. We have not received any objections to this spacing unit or location. NEI hereby respectfully requests approval of this well.

If you have any questions or issues regarding this permit, please contact me at (281) 943-1940, or brittany.mcfadden@nblenergy.com.

Respectfully,

Brittany McFadden

Brittany McFadden
Regulatory Analyst
Noble Energy Inc.

Guttersen Y05-771

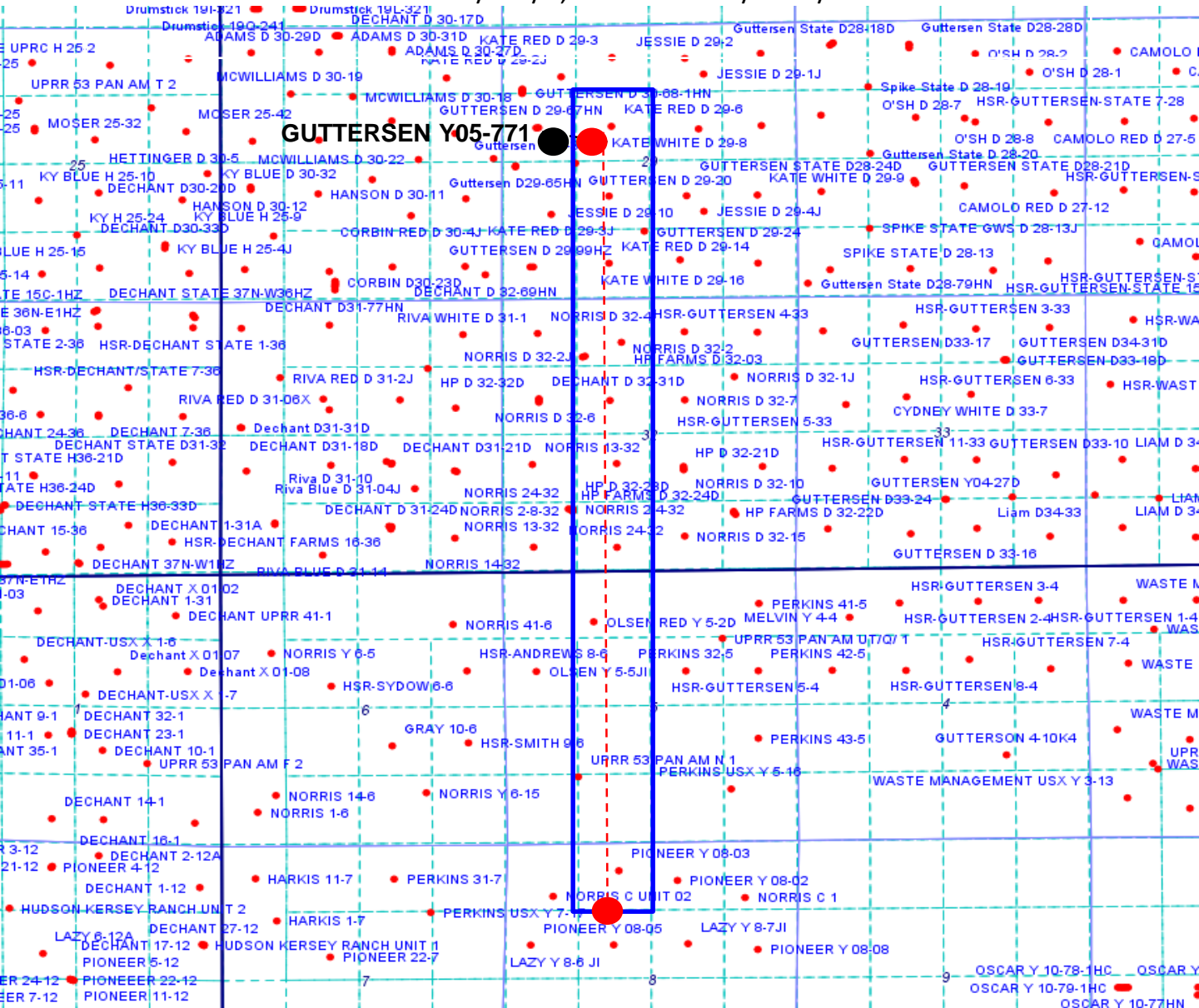
Proposed Spacing Unit – Noble Energy, Inc

Township 3 North, Range 64 West, 6th P.M.

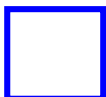
Section 29: SE/4NW/4,E/2SW/4; Section 32: E/2W/2

Township 2 North, Range 64 West, 6th P.M.

Section 5: E/2W/2; Section 8: NE/4NW/4



Legend



Proposed 478.422± acre spacing unit

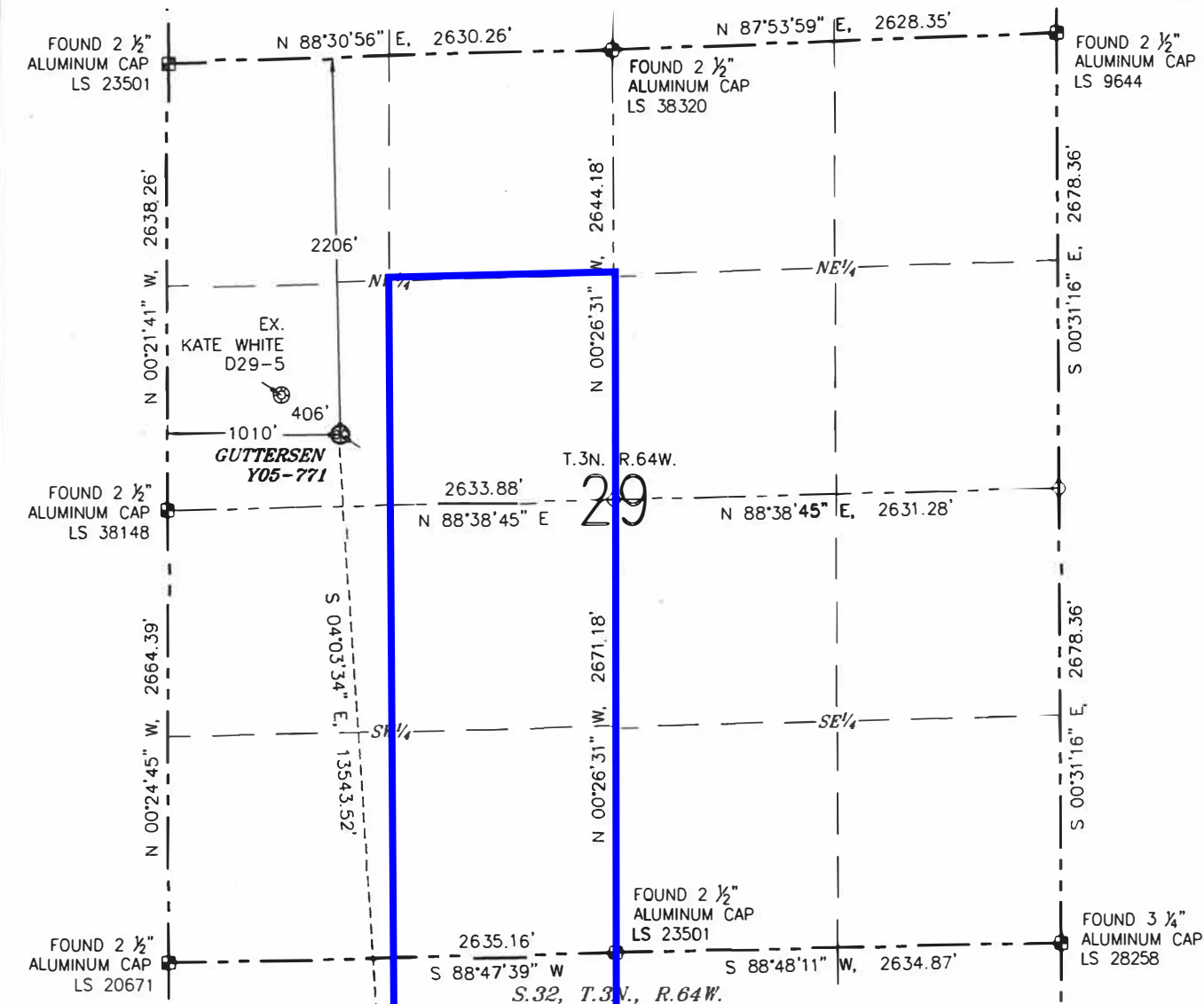


Bottom Hole Location

WELL LOCATION CERTIFICATE

GUTTERSEN Y05-771

(SHEET 1 OF 3)

SECTION: 29
TOWNSHIP: 3N
RANGE: 64W

NOTES

1. BEARINGS ARE GRID BEARINGS OF THE COLORADO STATE PLANE COORDINATE SYSTEM, NORTH ZONE, NAD 83. THE LINEAL DIMENSIONS SHOWN HEREON ARE BASED UPON THE "U.S. SURVEY FOOT".
2. GROUND ELEVATIONS ARE BASED UPON NGS OPUS SOLUTION NAVD 88 DATUM COMPUTED USING GEOID09.
3. IMPROVEMENTS: SEE LOCATION DRAWING FOR ALL VISIBLE IMPROVEMENTS WITHIN 500' OF THE DISTURBED AREA.
4. SURFACE USE: RANGELAND.
5. INSTRUMENT OPERATOR: JASON DOW-PETERSON.
6. THE NEAREST EXISTING WELL: KATE WHITE D29-5, 405' NW.

IN ACCORDANCE WITH A REQUEST FROM MATT CAMPBELL WITH NOBLE ENERGY INC., R&R ENGINEERS-SURVEYORS, INC. HAS DETERMINED THE SURFACE HOLE LOCATION OF THE GUTTERSEN Y05-771 WELL TO BE 2206' FROM THE NORTH LINE AND 1010' FROM THE WEST LINE AS MEASURED AT RIGHT ANGLES FROM THE SECTION LINES OF SECTION 29, TOWNSHIP 3 NORTH, RANGE 64 WEST, AND THE BOTTOM HOLE LOCATION TO BE 75' FROM THE SOUTH LINE AND 1854' FROM THE WEST LINE AS MEASURED AT RIGHT ANGLES FROM THE SECTION LINES OF SECTION 5, TOWNSHIP 2 NORTH, RANGE 64 WEST OF THE 6TH PRINCIPAL MERIDIAN, WELD COUNTY, COLORADO.

I HEREBY CERTIFY THAT THIS WELL LOCATION CERTIFICATE WAS PREPARED BY ME, OR UNDER MY DIRECT SUPERVISION, THAT THE FIELD WORK WAS COMPLETED ON 02/21/2018, FOR AND ON BEHALF OF NOBLE ENERGY INC., THAT IT IS NOT A LAND SURVEY PLAT OR AN IMPROVEMENT SURVEY PLAT, AND THAT IT IS NOT TO BE RELIED UPON FOR ESTABLISHMENT OF FENCES, BUILDINGS, OR OTHER FUTURE IMPROVEMENT LINES.

SURFACE HOLE LOCATION

LATITUDE: N 40.19744°
LONGITUDE: W 104.58096°
PDOP: 1.3
ELEVATION: 4785'
¼-¼: SW¼NW¼

BOTTOM HOLE LOCATION

LATITUDE: N 40.1603°
LONGITUDE: W 104.5703°

LEGEND

- ⊗ PROPOSED WELL
- ⊙ EXISTING WELL
- ⊖ BOTTOM HOLE
- ⊠ FOUND MONUMENT
- CALCULATED POSITION



0 1000'
SCALE: 1" = 1000'



STACY LYNN BALZER, PLS 38495
FOR AND ON BEHALF OF R&R
ENGINEERS-SURVEYORS, INC.

DATE: 03/15/2018
JOB #: NE17302

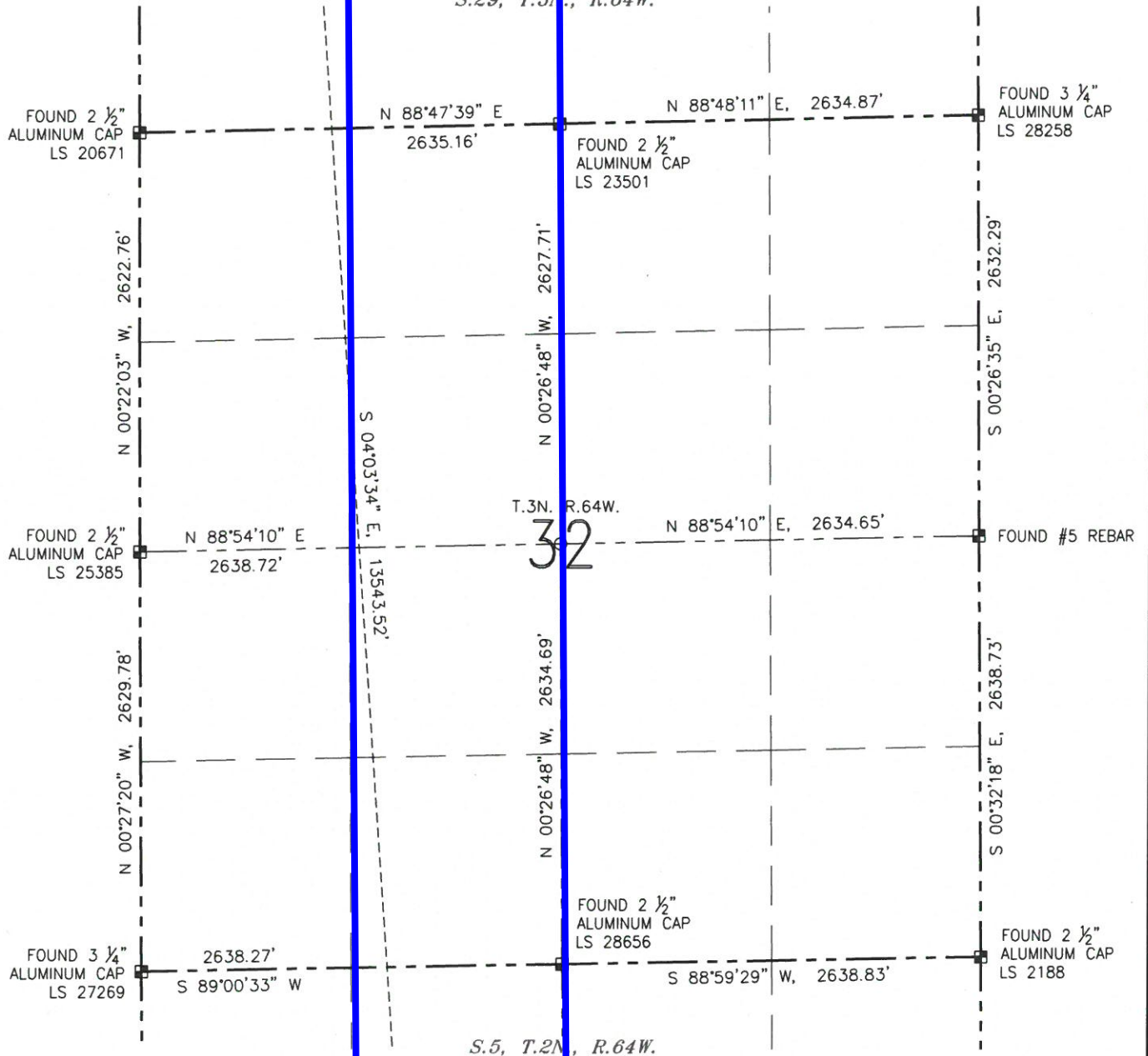
WELL LOCATION CERTIFICATE

GUTTERSEN Y05-771

(SHEET 2 OF 3)

SECTION: 29
TOWNSHIP: 3N
RANGE: 64W

S.29, T.3N, R.64W.



LEGEND

- ⊗ PROPOSED WELL
- ⊙ EXISTING WELL
- ⊙ BOTTOM HOLE
- ⊙ FOUND MONUMENT
- CALCULATED POSITION



0 1000'

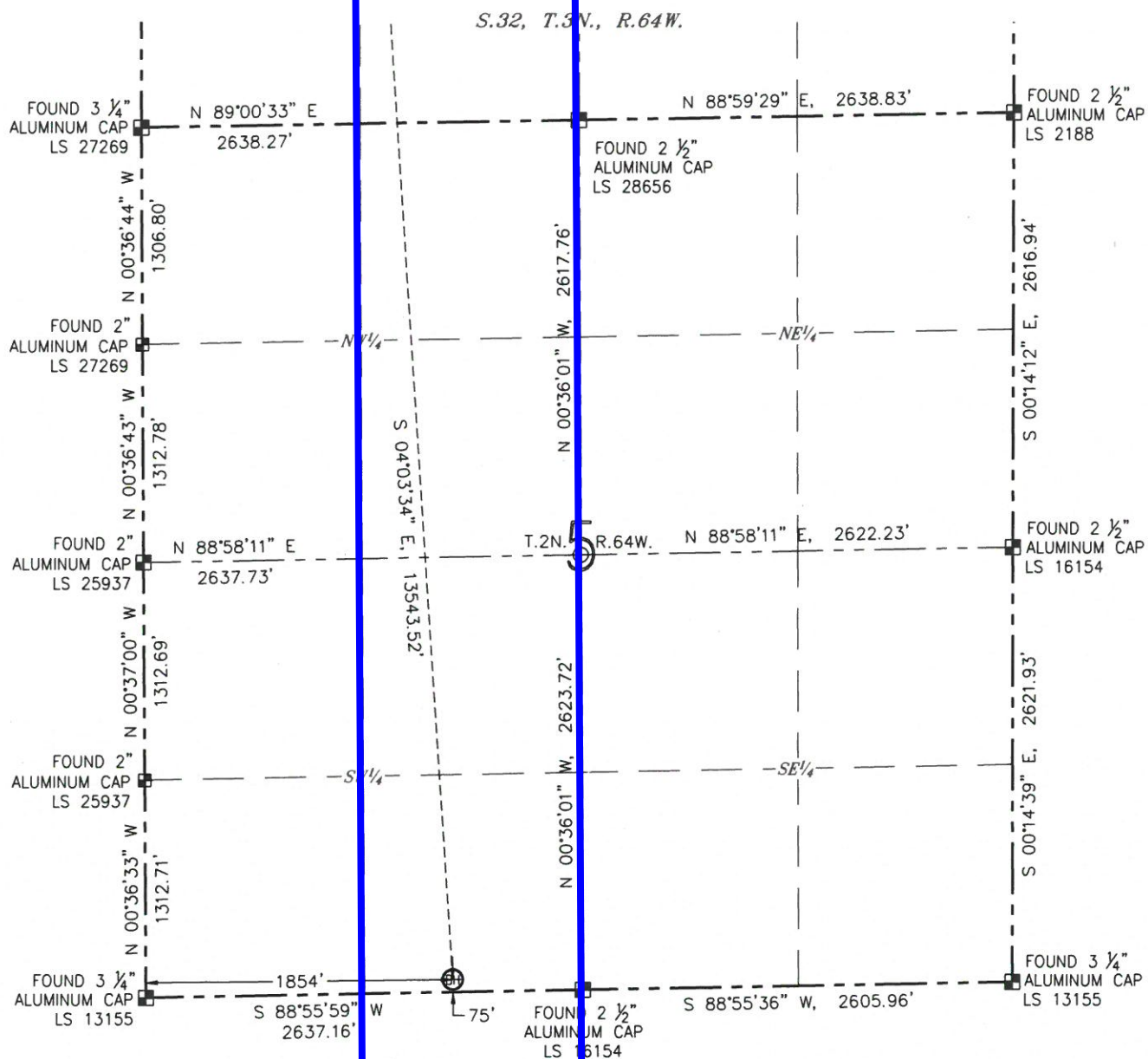
SCALE: 1" = 1000'

DATE: 03/15/2018
JOB #: NE17302

WELL LOCATION CERTIFICATE

GUTTERSEN Y05-771

(SHEET 3 OF 3)

SECTION: 29
TOWNSHIP: 3N
RANGE: 64W

LEGEND

- ⊗ PROPOSED WELL
- ⊙ EXISTING WELL
- ⊕ BOTTOM HOLE
- ⊠ FOUND MONUMENT
- CALCULATED POSITION



0 1000'

SCALE: 1" = 1000'

DATE: 03/15/2018
JOB #: NE17302