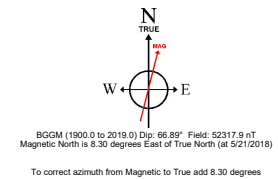
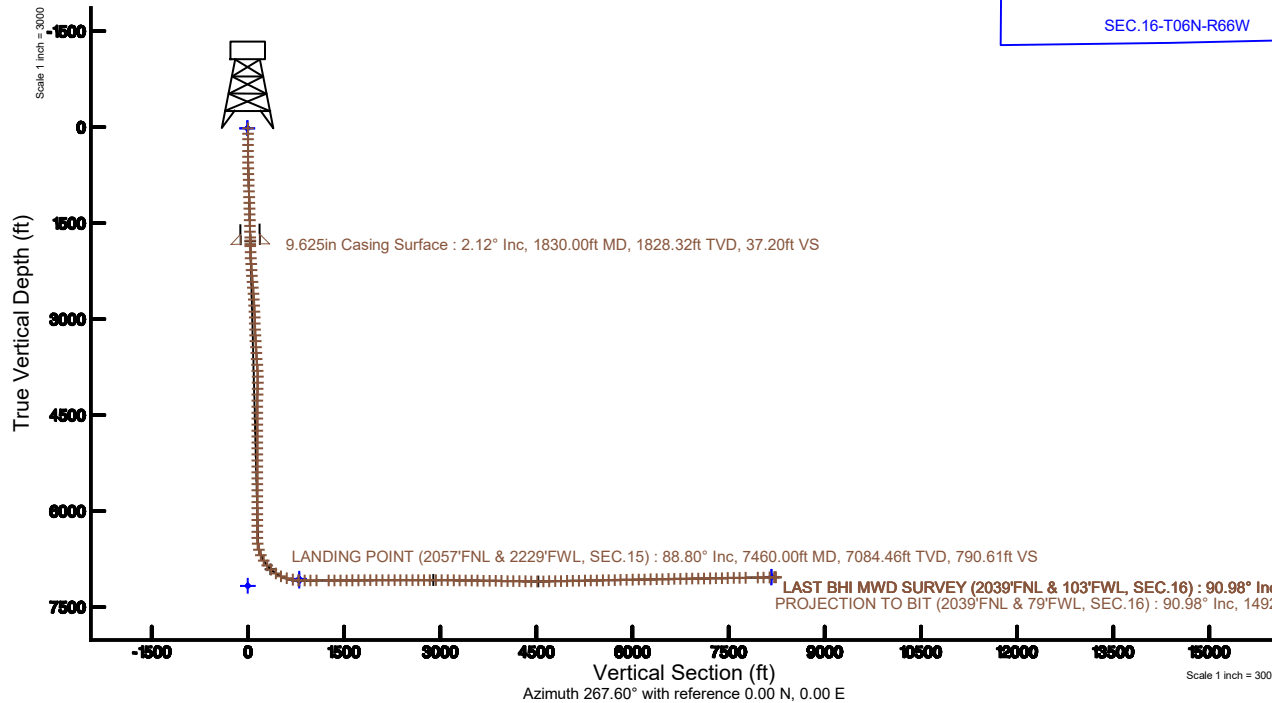
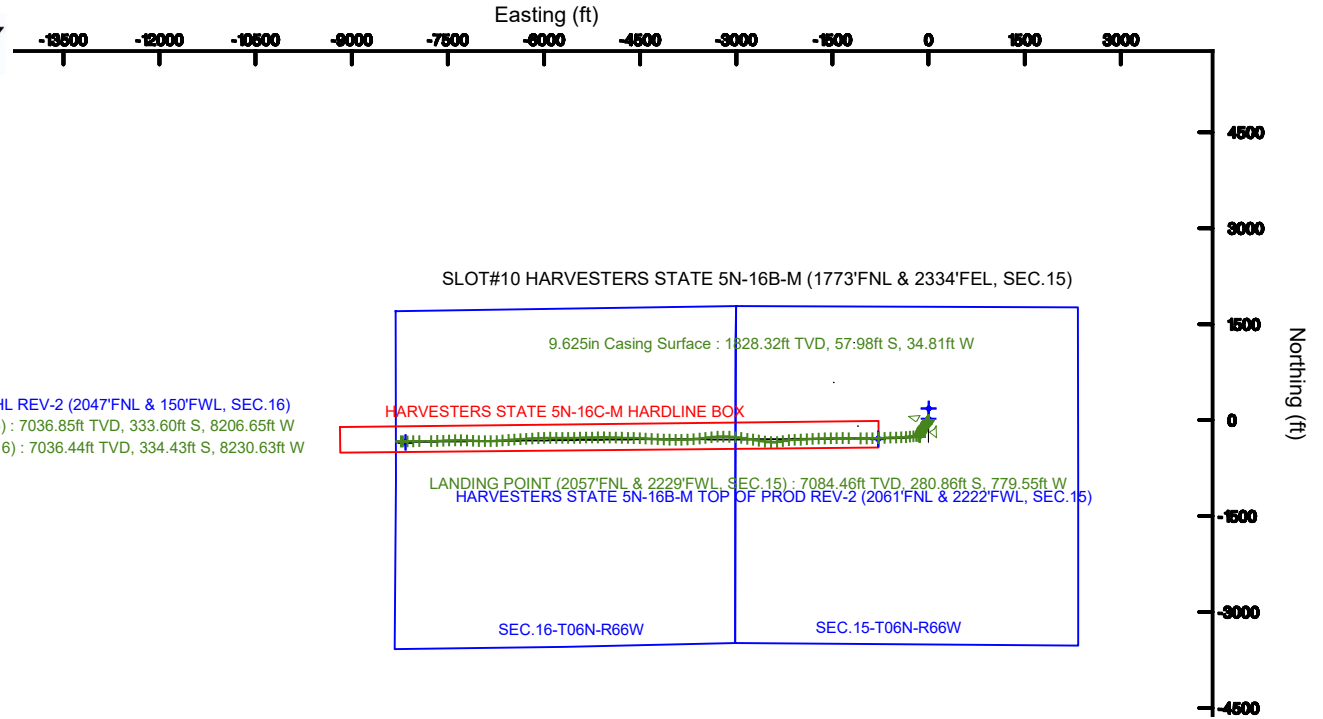


SRC ENERGY

Location: COLORADO Slot: SLOT#10 HARVESTERS STATE 5N-16B-M (1773°FNL & 2334°FEL, SEC.15)
 Field: WELD COUNTY (NAD83,TRUE NORTH) Well: HARVESTERS STATE 5N-16B-M
 Facility: SEC.15-T06N-R66W Wellbore: HARVESTERS STATE 5N-16B-M PWB

Plot reference wellpath is HARVESTERS STATE 5N-16B-M (REV-8.0) PWP	Grid System: NAD83 / Lambert Colorado SP, Northern Zone (501), US feet
True vertical depths are referenced to PRECISION 462 (20') (RKB)	* = Wellpath was transformed from a different geodetic datum
Measured depths are referenced to PRECISION 462 (20') (RKB)	North Reference: True north
PRECISION 462 (20') (RKB) to Mean Sea Level: 4822 feet	Scale: True distance
Mean Sea Level to Mud line (At Slot: SLOT#10 HARVESTERS STATE 5N-16B-M (1773°FNL & 2334°FEL, SEC.15)): 0 feet	Depths are in feet
Coordinates are in feet referenced to Slot	Created by: doddanna on 2019-06-06
	Database: WellArchitectDB





Actual Wellpath Report

HARVESTERS STATE 5N-16B-M AWP

Page 1 of 9



REFERENCE WELLPATH IDENTIFICATION

Operator	SRC ENERGY	Slot	SLOT#10 HARVESTERS STATE 5N-16B-M (1773'FNL & 2334'FEL, SEC.15)
Area	COLORADO	Well	HARVESTERS STATE 5N-16B-M
Field	WELD COUNTY (NAD83, TRUE NORTH)	Wellbore	HARVESTERS STATE 5N-16B-M AWP
Facility	SEC.15-T06N-R66W		

REPORT SETUP INFORMATION

Projection System	NAD83 / Lambert Colorado SP, Northern Zone (501), US feet	Software System	WellArchitect® 5.0
North Reference	True	User	Doddanna
Scale	0.999966	Report Generated	6/6/2018 at 3:57:54 PM
Convergence at slot	0.48° East	Database/Source file	WellArchitectDB/HARVESTERS_STATE_5N-16B-M_AWP.xml

WELLPATH LOCATION

	Local coordinates		Grid coordinates		Geographic coordinates	
	North[ft]	East[ft]	Easting[US ft]	Northing[US ft]	Latitude	Longitude
Slot Location	-179.93	-1.39	3205121.02	1422468.59	40°29'26.650"N	104°45'45.040"W
Facility Reference Pt			3205120.91	1422648.52	40°29'28.428"N	104°45'45.022"W
Field Reference Pt			3171284.48	1426358.81	40°30'07.643"N	104°53'02.634"W

WELLPATH DATUM

Calculation method	Minimum curvature	PRECISION 462 (20') (RKB) to Facility Vertical Datum	4822.00ft
Horizontal Reference Pt	Slot	PRECISION 462 (20') (RKB) to Mean Sea Level	4822.00ft
Vertical Reference Pt	PRECISION 462 (20') (RKB)	PRECISION 462 (20') (RKB) to Mud Line at Slot (SLOT#10 HARVESTERS STATE 5N-16B-M (1773'FNL & 2334'FEL, SEC.15))	4822.00ft
MD Reference Pt	PRECISION 462 (20') (RKB)	Section Origin	N 0.00, E 0.00 ft
Field Vertical Reference	Mean Sea Level	Section Azimuth	267.60°



Actual Wellpath Report

HARVESTERS STATE 5N-16B-M AWP

Page 2 of 9



REFERENCE WELLPATH IDENTIFICATION

Operator	SRC ENERGY	Slot	SLOT#10 HARVESTERS STATE 5N-16B-M (1773'FNL & 2334'FEL, SEC.15)
Area	COLORADO	Well	HARVESTERS STATE 5N-16B-M
Field	WELD COUNTY (NAD83, TRUE NORTH)	Wellbore	HARVESTERS STATE 5N-16B-M AWP
Facility	SEC.15-T06N-R66W		

WELLPATH DATA (162 stations) † = interpolated/extrapolated station

MD [ft]	Inclination [°]	Azimuth [°]	TVD [ft]	Vert Sect [ft]	North [ft]	East [ft]	DLS [°/100ft]	Comments
0.00†	0.000	333.100	0.00	0.00	0.00	0.00	0.00	
20.00	0.000	333.100	20.00	0.00	0.00	0.00	0.00	
102.00	0.400	333.100	102.00	0.12	0.26	-0.13	0.49	
189.00	0.210	27.120	189.00	0.17	0.67	-0.19	0.37	
280.00	0.100	359.090	280.00	0.08	0.90	-0.12	0.14	
373.00	0.570	208.720	373.00	0.32	0.57	-0.34	0.71	
464.00	1.290	205.420	463.98	1.03	-0.75	-1.00	0.79	
554.00	2.030	208.030	553.95	2.31	-3.07	-2.18	0.83	
644.00	2.650	213.020	643.87	4.32	-6.22	-4.07	0.72	
734.00	3.270	216.080	733.75	7.13	-10.04	-6.71	0.71	
824.00	3.120	216.230	823.61	10.25	-14.09	-9.67	0.17	
914.00	3.130	212.260	913.48	13.18	-18.15	-12.43	0.24	
1004.00	3.080	213.160	1003.34	15.98	-22.25	-15.06	0.08	
1094.00	3.130	211.810	1093.21	18.77	-26.36	-17.68	0.10	
1184.00	3.090	211.750	1183.08	21.51	-30.51	-20.25	0.04	
1274.00	2.840	216.230	1272.96	24.27	-34.37	-22.85	0.38	
1364.00	2.770	213.270	1362.85	26.93	-37.99	-25.36	0.18	
1454.00	2.430	208.990	1452.76	29.19	-41.48	-27.48	0.43	
1544.00	2.880	205.960	1542.66	31.25	-45.18	-29.39	0.52	
1634.00	3.000	201.590	1632.54	33.29	-49.40	-31.25	0.28	
1724.00	2.810	201.970	1722.43	35.15	-53.64	-32.94	0.21	
1776.00	2.660	202.100	1774.37	36.18	-55.94	-33.87	0.29	
1863.00	1.800	212.940	1861.30	37.81	-58.95	-35.37	1.10	
1956.00	3.140	214.100	1954.21	40.17	-62.29	-37.60	1.44	
2049.00	4.900	216.630	2046.98	44.18	-67.59	-41.39	1.90	
2144.00	6.060	217.100	2141.55	49.93	-74.84	-46.84	1.22	
2236.00	6.080	219.730	2233.03	56.28	-82.46	-52.88	0.30	
2329.00	6.250	224.230	2325.49	63.27	-89.88	-59.56	0.55	
2423.00	6.040	227.690	2418.95	70.78	-96.87	-66.79	0.45	
2515.00	5.930	224.820	2510.45	77.98	-103.50	-73.72	0.35	



Actual Wellpath Report

HARVESTERS STATE 5N-16B-M AWP

Page 3 of 9



REFERENCE WELLPATH IDENTIFICATION

Operator	SRC ENERGY	Slot	SLOT#10 HARVESTERS STATE 5N-16B-M (1773'FNL & 2334'FEL, SEC.15)
Area	COLORADO	Well	HARVESTERS STATE 5N-16B-M
Field	WELD COUNTY (NAD83,TRUE NORTH)	Wellbore	HARVESTERS STATE 5N-16B-M AWP
Facility	SEC.15-T06N-R66W		

WELLPATH DATA (162 stations)

MD [ft]	Inclination [°]	Azimuth [°]	TVD [ft]	Vert Sect [ft]	North [ft]	East [ft]	DLS [°/100ft]	Comments
2610.00	5.900	224.000	2604.95	85.12	-110.50	-80.57	0.09	
2702.00	6.240	217.480	2696.43	91.75	-117.87	-86.90	0.83	
2797.00	6.500	210.390	2790.85	97.97	-126.60	-92.76	0.87	
2890.00	6.260	197.420	2883.27	102.54	-135.98	-96.94	1.57	
2983.00	5.970	189.980	2975.75	105.29	-145.58	-99.29	0.91	
3077.00	6.150	196.810	3069.22	108.00	-155.22	-101.60	0.79	
3171.00	6.190	195.570	3162.68	111.22	-164.92	-104.41	0.15	
3263.00	6.050	201.150	3254.15	114.69	-174.22	-107.50	0.66	
3356.00	6.030	214.830	3346.64	119.60	-182.80	-112.05	1.54	
3448.00	6.020	217.920	3438.14	125.64	-190.57	-117.78	0.35	
3541.00	5.990	211.620	3530.63	131.51	-198.55	-123.32	0.71	
3635.00	6.070	214.400	3624.11	137.23	-206.83	-128.70	0.32	
3728.00	6.100	219.970	3716.58	143.51	-214.67	-134.65	0.64	
3821.00	6.040	212.400	3809.06	149.63	-222.59	-140.45	0.86	
3914.00	6.270	188.390	3901.54	153.37	-231.75	-143.81	2.76	
4007.00	5.940	167.050	3994.03	153.44	-241.46	-143.47	2.45	
4102.00	4.610	156.930	4088.62	151.20	-249.76	-140.88	1.70	
4196.00	2.070	122.520	4182.46	148.47	-254.15	-137.96	3.33	
4290.00	1.820	38.770	4276.43	146.09	-253.90	-135.60	2.77	
4385.00	0.090	315.050	4371.41	145.15	-252.67	-134.70	1.91	
4478.00	0.030	170.630	4464.41	145.20	-252.65	-134.75	0.12	
4570.00	0.060	205.450	4556.41	145.22	-252.71	-134.77	0.04	
4664.00	0.090	357.450	4650.41	145.24	-252.68	-134.79	0.16	
4758.00	0.220	253.990	4744.41	145.42	-252.66	-134.97	0.27	
4851.00	0.100	267.010	4837.41	145.67	-252.71	-135.22	0.13	
4944.00	0.130	205.010	4930.41	145.80	-252.81	-135.35	0.13	
5036.00	0.070	231.840	5022.41	145.89	-252.94	-135.44	0.08	
5129.00	0.040	107.210	5115.41	145.91	-252.99	-135.45	0.11	
5224.00	0.070	234.010	5210.41	145.93	-253.03	-135.47	0.10	
5317.00	0.060	92.490	5303.41	145.93	-253.07	-135.46	0.13	



SRC ENERGY

Actual Wellpath Report

HARVESTERS STATE 5N-16B-M AWP

Page 4 of 9



REFERENCE WELLPATH IDENTIFICATION

Operator	SRC ENERGY	Slot	SLOT#10 HARVESTERS STATE 5N-16B-M (1773'FNL & 2334'FEL, SEC.15)
Area	COLORADO	Well	HARVESTERS STATE 5N-16B-M
Field	WELD COUNTY (NAD83, TRUE NORTH)	Wellbore	HARVESTERS STATE 5N-16B-M AWP
Facility	SEC.15-T06N-R66W		

WELLPATH DATA (162 stations)

MD [ft]	Inclination [°]	Azimuth [°]	TVD [ft]	Vert Sect [ft]	North [ft]	East [ft]	DLS [°/100ft]	Comments
5410.00	0.000	97.540	5396.41	145.88	-253.07	-135.41	0.06	
5502.00	0.040	199.590	5488.41	145.89	-253.10	-135.42	0.04	
5596.00	0.070	239.610	5582.41	145.95	-253.16	-135.49	0.05	
5689.00	0.100	154.110	5675.41	145.97	-253.26	-135.50	0.13	
5782.00	0.060	344.000	5768.41	145.95	-253.29	-135.48	0.17	
5875.00	0.100	309.640	5861.41	146.02	-253.19	-135.55	0.07	
5968.00	0.090	311.080	5954.41	146.13	-253.09	-135.67	0.01	
6062.00	0.100	204.000	6048.41	146.22	-253.12	-135.76	0.16	
6155.00	0.070	271.090	6141.41	146.32	-253.19	-135.85	0.10	
6247.00	0.070	266.010	6233.41	146.43	-253.19	-135.96	0.01	
6340.00	0.070	285.720	6326.41	146.54	-253.18	-136.07	0.03	
6433.00	0.240	278.530	6419.41	146.78	-253.14	-136.32	0.18	
6525.00	8.140	281.710	6511.09	153.30	-251.78	-142.90	8.59	
6620.00	15.790	279.690	6603.96	172.49	-248.24	-162.25	8.06	
6712.00	23.610	267.640	6690.54	203.21	-246.89	-193.06	9.54	
6806.00	31.820	260.850	6773.70	246.73	-251.61	-236.42	9.35	
6899.00	38.910	262.150	6849.50	300.22	-259.51	-289.63	7.67	
6991.00	47.910	265.610	6916.27	363.24	-266.08	-352.42	10.12	
7086.00	55.750	268.940	6974.95	437.85	-269.51	-426.95	8.70	
7178.00	64.780	268.490	7020.53	517.64	-271.32	-506.74	9.82	
7272.00	74.960	267.930	7052.84	605.77	-274.08	-594.83	10.84	
7367.00	78.780	267.770	7074.41	698.27	-277.56	-687.27	4.02	
7460.00	88.800	268.120	7084.46	790.61	-280.86	-779.55	10.78	LANDING POINT (2057'FNL & 2229'FWL, SEC.15)
7554.00	89.750	268.850	7085.65	884.59	-283.35	-873.50	1.27	
7647.00	89.600	268.990	7086.18	977.56	-285.10	-966.49	0.22	
7741.00	89.880	271.060	7086.61	1071.47	-285.06	-1060.48	2.22	
7928.00	90.220	270.900	7086.44	1258.15	-281.86	-1247.45	0.20	
8022.00	90.150	270.130	7086.14	1352.02	-281.02	-1341.45	0.82	
8115.00	90.370	269.530	7085.72	1444.95	-281.29	-1434.44	0.69	
8208.00	90.370	268.490	7085.12	1537.92	-282.90	-1527.43	1.12	



Actual Wellpath Report

HARVESTERS STATE 5N-16B-M AWP

Page 5 of 9



REFERENCE WELLPATH IDENTIFICATION

Operator	SRC ENERGY	Slot	SLOT#10 HARVESTERS STATE 5N-16B-M (1773'FNL & 2334'FEL, SEC.15)
Area	COLORADO	Well	HARVESTERS STATE 5N-16B-M
Field	WELD COUNTY (NAD83, TRUE NORTH)	Wellbore	HARVESTERS STATE 5N-16B-M AWP
Facility	SEC.15-T06N-R66W		

WELLPATH DATA (162 stations)

MD [ft]	Inclination [°]	Azimuth [°]	TVD [ft]	Vert Sect [ft]	North [ft]	East [ft]	DLS [°/100ft]	Comments
8302.00	90.340	268.100	7084.53	1631.91	-285.70	-1621.38	0.42	
8395.00	90.490	267.440	7083.86	1724.91	-289.32	-1714.31	0.73	
8488.00	90.430	266.880	7083.11	1817.90	-293.92	-1807.19	0.61	
8581.00	90.310	266.430	7082.51	1910.89	-299.35	-1900.03	0.50	
8676.00	90.280	266.290	7082.02	2005.86	-305.38	-1994.84	0.15	
8769.00	90.220	269.500	7081.62	2098.85	-308.80	-2087.76	3.45	
8863.00	89.970	264.510	7081.46	2192.81	-313.71	-2181.61	5.32	
8957.00	90.090	257.930	7081.41	2286.18	-328.05	-2274.45	7.00	
9050.00	90.250	262.630	7081.14	2378.40	-343.74	-2366.09	5.06	
9144.00	90.150	274.830	7080.81	2472.20	-345.82	-2459.89	12.98	
9239.00	90.340	278.350	7080.40	2566.02	-334.92	-2554.25	3.71	
9332.00	90.220	279.650	7079.95	2657.18	-320.37	-2646.10	1.40	
9425.00	90.220	278.700	7079.59	2748.29	-305.55	-2737.91	1.02	
9518.00	89.690	277.870	7079.66	2839.68	-292.14	-2829.94	1.06	
9612.00	89.720	277.710	7080.15	2932.19	-279.40	-2923.07	0.17	
9705.00	89.380	276.210	7080.88	3023.95	-268.13	-3015.38	1.65	
9799.00	89.050	273.200	7082.16	3117.21	-260.43	-3109.04	3.22	
9892.00	89.290	270.370	7083.51	3209.94	-257.53	-3201.98	3.05	
9985.00	89.170	267.210	7084.76	3302.90	-259.49	-3294.93	3.40	
10079.00	89.230	263.650	7086.07	3396.81	-266.98	-3388.61	3.79	
10172.00	89.350	262.510	7087.23	3489.51	-278.18	-3480.92	1.23	
10266.00	89.290	263.740	7088.34	3583.22	-289.44	-3574.24	1.31	
10359.00	89.170	265.300	7089.59	3676.07	-298.32	-3666.80	1.68	
10453.00	89.080	266.990	7091.03	3770.03	-304.64	-3760.58	1.80	
10547.00	88.980	268.710	7092.62	3864.01	-308.16	-3854.49	1.83	
10641.00	89.290	271.190	7094.04	3957.91	-308.24	-3948.48	2.66	
10734.00	89.080	272.190	7095.36	4050.66	-305.50	-4041.42	1.10	
10826.00	89.290	272.620	7096.67	4142.33	-301.64	-4133.33	0.52	
10920.00	89.050	272.680	7098.03	4235.96	-297.29	-4227.22	0.26	
11013.00	89.290	272.620	7099.38	4328.59	-293.00	-4320.11	0.27	



Actual Wellpath Report

HARVESTERS STATE 5N-16B-M AWP

Page 6 of 9



REFERENCE WELLPATH IDENTIFICATION

Operator	SRC ENERGY	Slot	SLOT#10 HARVESTERS STATE 5N-16B-M (1773'FNL & 2334'FEL, SEC.15)
Area	COLORADO	Well	HARVESTERS STATE 5N-16B-M
Field	WELD COUNTY (NAD83, TRUE NORTH)	Wellbore	HARVESTERS STATE 5N-16B-M AWP
Facility	SEC.15-T06N-R66W		

WELLPATH DATA (162 stations)

MD [ft]	Inclination [°]	Azimuth [°]	TVD [ft]	Vert Sect [ft]	North [ft]	East [ft]	DLS [°/100ft]	Comments
11107.00	89.320	272.930	7100.52	4422.20	-288.44	-4414.00	0.33	
11200.00	89.320	272.770	7101.62	4514.80	-283.82	-4506.88	0.17	
11294.00	91.230	271.860	7101.17	4608.48	-280.02	-4600.79	2.25	
11386.00	91.110	270.700	7099.29	4700.27	-277.97	-4692.75	1.27	
11479.00	91.020	271.520	7097.57	4793.08	-276.17	-4785.71	0.89	
11572.00	90.830	271.480	7096.06	4885.85	-273.73	-4878.67	0.21	
11666.00	91.170	271.170	7094.42	4979.64	-271.56	-4972.63	0.49	
11758.00	91.200	270.360	7092.52	5071.48	-270.33	-5064.60	0.88	
11851.00	91.050	269.360	7090.69	5164.39	-270.56	-5157.58	1.09	
11945.00	91.080	268.950	7088.95	5258.33	-271.95	-5251.56	0.44	
12038.00	91.230	268.680	7087.07	5351.29	-273.87	-5344.52	0.33	
12131.00	91.170	268.860	7085.13	5444.25	-275.86	-5437.48	0.20	
12225.00	90.980	269.220	7083.36	5538.21	-277.44	-5531.45	0.43	
12318.00	91.080	270.250	7081.69	5631.13	-277.87	-5624.43	1.11	
12410.00	91.050	270.170	7079.98	5723.02	-277.53	-5716.41	0.09	
12503.00	91.290	270.600	7078.08	5815.89	-276.91	-5809.39	0.53	
12597.00	91.260	270.450	7075.99	5909.74	-276.05	-5903.36	0.16	
12690.00	91.230	268.460	7073.97	6002.67	-276.93	-5996.33	2.14	
12783.00	90.920	266.920	7072.22	6095.65	-280.68	-6089.24	1.69	
12877.00	90.980	266.200	7070.66	6189.62	-286.32	-6183.05	0.77	
12970.00	90.860	266.080	7069.17	6282.58	-292.58	-6275.83	0.18	
13063.00	91.140	266.730	7067.55	6375.54	-298.41	-6368.63	0.76	
13156.00	91.020	266.130	7065.80	6468.50	-304.20	-6461.44	0.66	
13248.00	90.950	265.500	7064.21	6560.45	-310.91	-6553.18	0.69	
13342.00	91.080	264.440	7062.55	6654.33	-319.15	-6646.80	1.14	
13435.00	90.890	266.150	7060.95	6747.24	-326.78	-6739.47	1.85	
13528.00	90.950	270.550	7059.46	6840.19	-329.46	-6832.39	4.73	
13620.00	90.890	270.890	7057.98	6932.05	-328.30	-6924.38	0.38	
13713.00	91.080	271.480	7056.38	7024.85	-326.38	-7017.34	0.67	
13805.00	90.830	273.830	7054.85	7116.47	-322.12	-7109.22	2.57	



Actual Wellpath Report

HARVESTERS STATE 5N-16B-M AWP

Page 7 of 9



REFERENCE WELLPATH IDENTIFICATION			
Operator	SRC ENERGY	Slot	SLOT#10 HARVESTERS STATE 5N-16B-M (1773'FNL & 2334'FEL, SEC.15)
Area	COLORADO	Well	HARVESTERS STATE 5N-16B-M
Field	WELD COUNTY (NAD83, TRUE NORTH)	Wellbore	HARVESTERS STATE 5N-16B-M AWB
Facility	SEC.15-T06N-R66W		

WELLPATH DATA (162 stations)								
MD [ft]	Inclination [°]	Azimuth [°]	TVD [ft]	Vert Sect [ft]	North [ft]	East [ft]	DLS [°/100ft]	Comments
13899.00	91.020	272.050	7053.33	7210.05	-317.30	-7203.08	1.90	
13992.00	91.080	270.300	7051.62	7302.85	-315.39	-7296.04	1.88	
14084.00	90.830	269.000	7050.09	7394.78	-315.95	-7388.03	1.44	
14177.00	91.050	267.840	7048.57	7487.75	-318.51	-7480.98	1.27	
14269.00	90.890	266.840	7047.01	7579.74	-322.78	-7572.87	1.10	
14361.00	90.890	269.150	7045.58	7671.72	-326.00	-7664.79	2.51	
14456.00	90.920	268.740	7044.08	7766.68	-327.75	-7759.76	0.43	
14643.00	90.800	270.060	7041.27	7953.56	-329.71	-7946.73	0.71	
14736.00	90.830	269.330	7039.95	8046.49	-330.20	-8039.72	0.79	
14829.00	91.230	268.920	7038.28	8139.44	-331.62	-8132.69	0.62	
14903.00	90.980	268.020	7036.85	8213.42	-333.60	-8206.65	1.26	LAST BHI MWD SURVEY (2039'FNL & 103'FWL, SEC.16)
14927.00	90.980	268.020	7036.44	8237.42	-334.43	-8230.63	0.00	PROJECTION TO BIT (2039'FNL & 79'FWL, SEC.16)

HOLE & CASING SECTIONS									
- Ref Wellbore: HARVESTERS STATE 5N-16B-M AWB					Ref Wellpath: HARVESTERS STATE 5N-16B-M AWP				
String/Diameter	Start MD [ft]	End MD [ft]	Interval [ft]	Start TVD [ft]	End TVD [ft]	Start N/S [ft]	Start E/W [ft]	End N/S [ft]	End E/W [ft]
13.5in Open Hole	20.00	1830.00	1810.00	20.00	1828.32	0.00	0.00	-57.98	-34.81
9.625in Casing Surface	20.00	1830.00	1810.00	20.00	1828.32	0.00	0.00	-57.98	-34.81
8.5in Open Hole	1830.00	14927.00	13097.00	1828.32	7036.44	-57.98	-34.81	-334.43	-8230.63



Actual Wellpath Report

HARVESTERS STATE 5N-16B-M AWP

Page 8 of 9



REFERENCE WELLPATH IDENTIFICATION			
Operator	SRC ENERGY	Slot	SLOT#10 HARVESTERS STATE 5N-16B-M (1773'FNL & 2334'FEL, SEC.15)
Area	COLORADO	Well	HARVESTERS STATE 5N-16B-M
Field	WELD COUNTY (NAD83, TRUE NORTH)	Wellbore	HARVESTERS STATE 5N-16B-M AWB
Facility	SEC.15-T06N-R66W		

TARGETS								
Name	TVD [ft]	North [ft]	East [ft]	Grid East [US ft]	Grid North [US ft]	Latitude	Longitude	Shape
SEC.15-T06N-R66W	16.00	179.93	1.39	3205120.91	1422648.52	40°29'28.428"N	104°45'45.022"W	polygon
SEC.16-T06N-R66W	16.00	179.93	1.39	3205120.91	1422648.52	40°29'28.428"N	104°45'45.022"W	polygon
HARVESTERS STATE 5N-16B-M BHL ON PLAT (2062'FNL & 150'FWL, SEC.16)	7029.00	-356.49	-8160.12	3196964.44	1422044.26	40°29'23.114"N	104°47'30.653"W	point
HARVESTERS STATE 5N-16B-M BHL REV-2 (2047'FNL & 150'FWL, SEC.16)	7036.41	-341.49	-8160.12	3196964.31	1422059.26	40°29'23.262"N	104°47'30.653"W	point
HARVESTERS STATE 5N-16B-M TOP OF PROD ON PLAT (2076'FNL & 2222'FWL, SEC.15)	7061.00	-300.25	-787.17	3204336.40	1422161.82	40°29'23.683"N	104°45'55.228"W	point
HARVESTERS STATE 5N-16B-M TOP OF PROD REV-2 (2061'FNL & 2222'FWL, SEC.15)	7090.28	-285.25	-787.17	3204336.28	1422176.82	40°29'23.831"N	104°45'55.228"W	point
HARVESTERS STATE 5N-16C-M HARDLINE BOX	7169.87	20.04	0.00	3205120.85	1422488.63	40°29'26.848"N	104°45'45.040"W	polygon

WELLPATH COMPOSITION - Ref Wellbore: HARVESTERS STATE 5N-16B-M AWB					Ref Wellpath: HARVESTERS STATE 5N-16B-M AWP	
Start MD [ft]	End MD [ft]	Positional Uncertainty Model	Log Name/Comment		Wellbore	
20.00	1776.00	BHI NaviTrak (Standard)	13 1/2" SURFACE SECTION <86'-1760'>		HARVESTERS STATE 5N-16B-M AWB	
1776.00	14903.00	BHI AutoTrak Curve (MagCAD+IFR1, Short spacing)	8 1/2" MONOBORE SURVEYS <1863'-14903'>		HARVESTERS STATE 5N-16B-M AWB	
14903.00	14927.00	Blind Drilling (std)	Projection to bit		HARVESTERS STATE 5N-16B-M AWB	



Actual Wellpath Report

HARVESTERS STATE 5N-16B-M AWP

Page 9 of 9



REFERENCE WELLPATH IDENTIFICATION

Operator	SRC ENERGY	Slot	SLOT#10 HARVESTERS STATE 5N-16B-M (1773'FNL & 2334'FEL, SEC.15)
Area	COLORADO	Well	HARVESTERS STATE 5N-16B-M
Field	WELD COUNTY (NAD83, TRUE NORTH)	Wellbore	HARVESTERS STATE 5N-16B-M AWB
Facility	SEC.15-T06N-R66W		

WELLPATH COMMENTS

MD [ft]	Inclination [°]	Azimuth [°]	TVD [ft]	Comment
7460.00	88.800	268.120	7084.46	LANDING POINT (2057'FNL & 2229'FWL, SEC.15)
14903.00	90.980	268.020	7036.85	LAST BHI MWD SURVEY (2039'FNL & 103'FWL, SEC.16)
14927.00	90.980	268.020	7036.44	PROJECTION TO BIT (2039'FNL & 79'FWL, SEC.16)