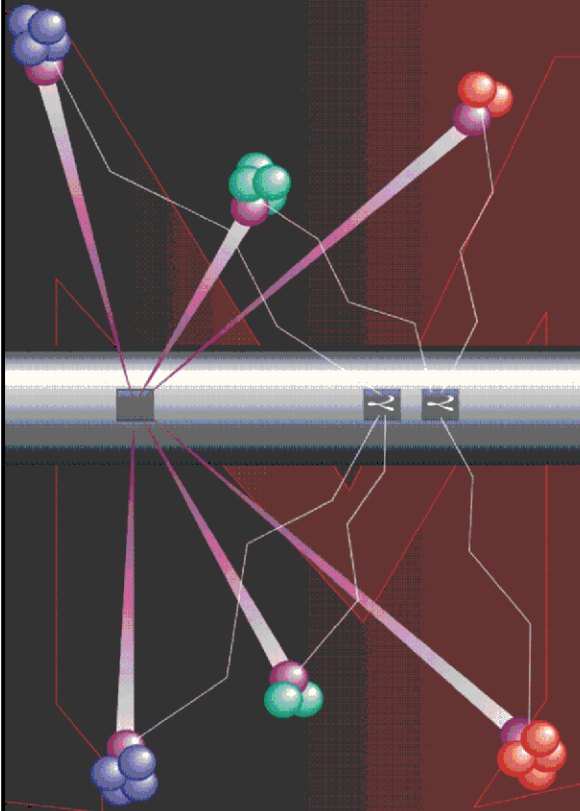


Pulsed Neutron Formation Evaluation



RESERVOIR PERFORMANCE MONITOR NEO Neutron Emulated Openhole

COMPANY LARAMIE ENERGY LLC

WELL NICHOLS FEDERAL 0994-24-19E

FIELD VEGA

COUNTY MESA STATE COLORADO

LOCATION:

SEE REMARKS

SEC 24 TWP 9S RGE 94W

ELEVATIONS:

KB 7236 FT DF GL 7212 FT

DATE 16-JUL-2018 ECC 136072

IN MAKING INTERPRETATIONS OF LOGS OUR EMPLOYEES WILL GIVE THE CUSTOMER THE BENEFIT OF THEIR BEST JUDGEMENT. BUT SINCE ALL INTERPRETATIONS ARE OPINIONS BASED ON INFERENCES FROM ELECTRICAL OR OTHER MEASUREMENTS, WE CANNOT, AND WE DO NOT GUARANTEE THE ACCURACY OR CORRECTNESS OF ANY INTERPRETATION. WE SHALL NOT BE LIABLE OR RESPONSIBLE FOR ANY LOSS, COST, DAMAGES, OR EXPENSES WHATSOEVER INCURRED OR SUSTAINED BY THE CUSTOMER RESULTING FROM ANY INTERPRETATION MADE BY ANY OF OUR EMPLOYEES.

COMPUTATION PARAMETERS

COMPUTATION	LOGS USED: <u>RPM-C</u>		PROGRAM: <u>NEO</u>
	CENTER: <u>HOUSTON</u>	LOG ANALYST: <u>KIMBERLY ELLSWORTH</u>	DATE: <u>16-JUL-2018</u>
FIELD DATA	LOCATION: <u>GRAND JUNCTION</u>	ENGINEER: <u>M. BAUKA</u>	DATE: <u>26-JUN-2018</u>

FROM	TO								
<u>2285 FT</u>	<u>7957 FT</u>								

REMARKS

LOCATION: SHL: 2317' FNL & 2791' FWL
BHL: 697 FSL & 1423' FEL

TRAINING WELL:
NICHOLS 24-06W

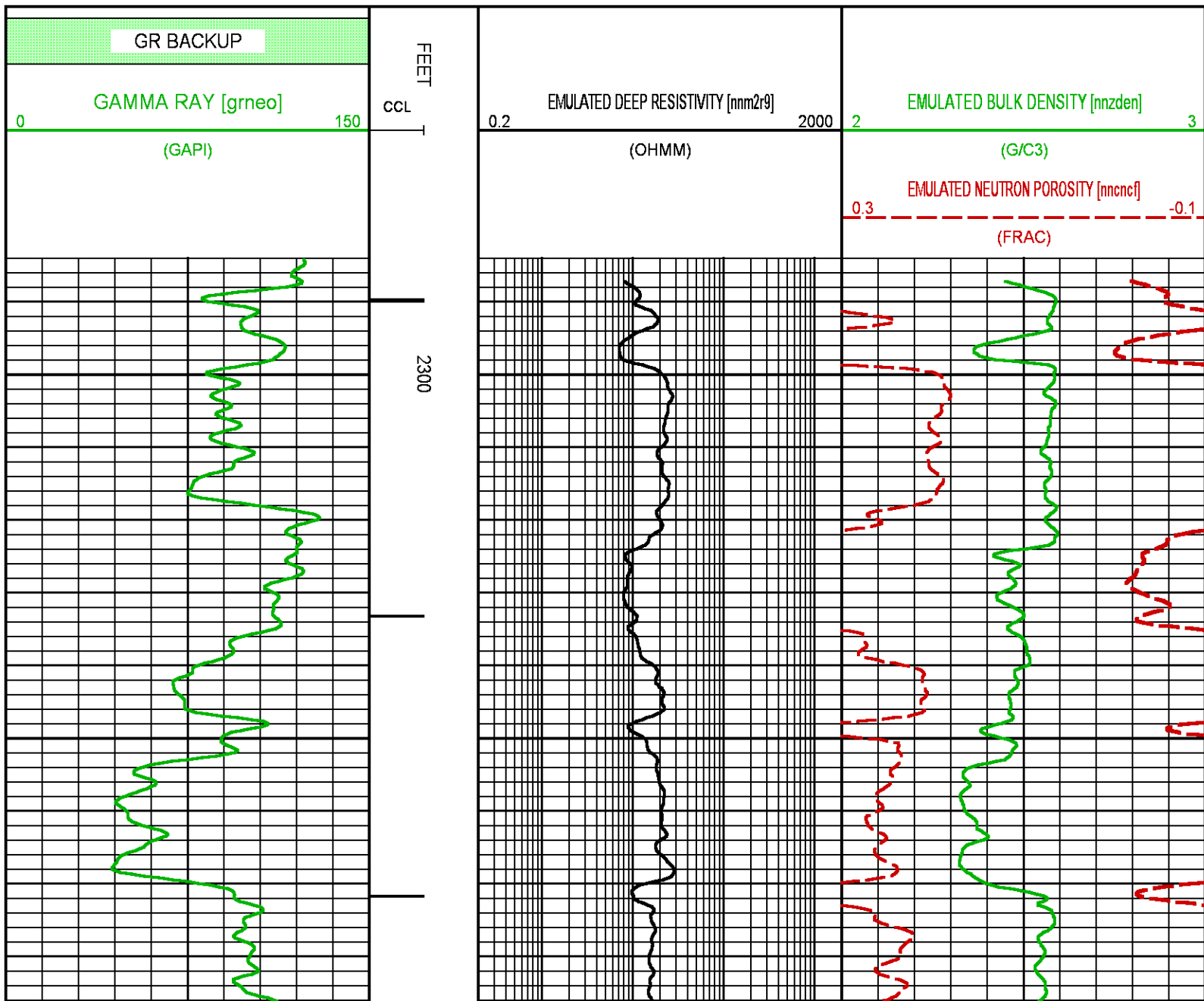
ANY ERRORS IN THE TRAINING WELL OPENHOLE DATA CAN PERETUATE THROUGH AS ERROR IN THE EMULATED RESULTS

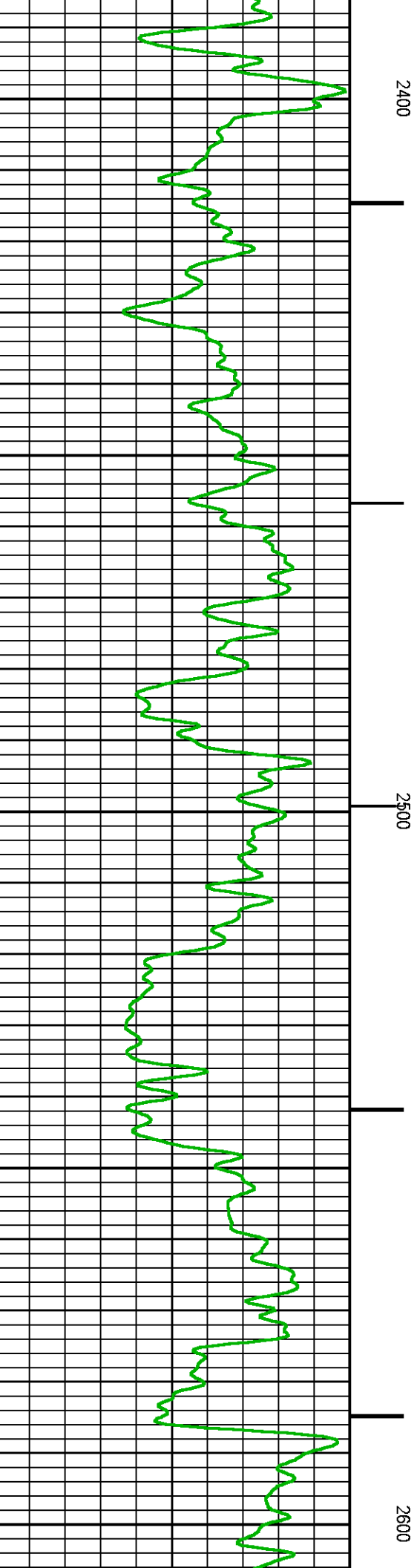
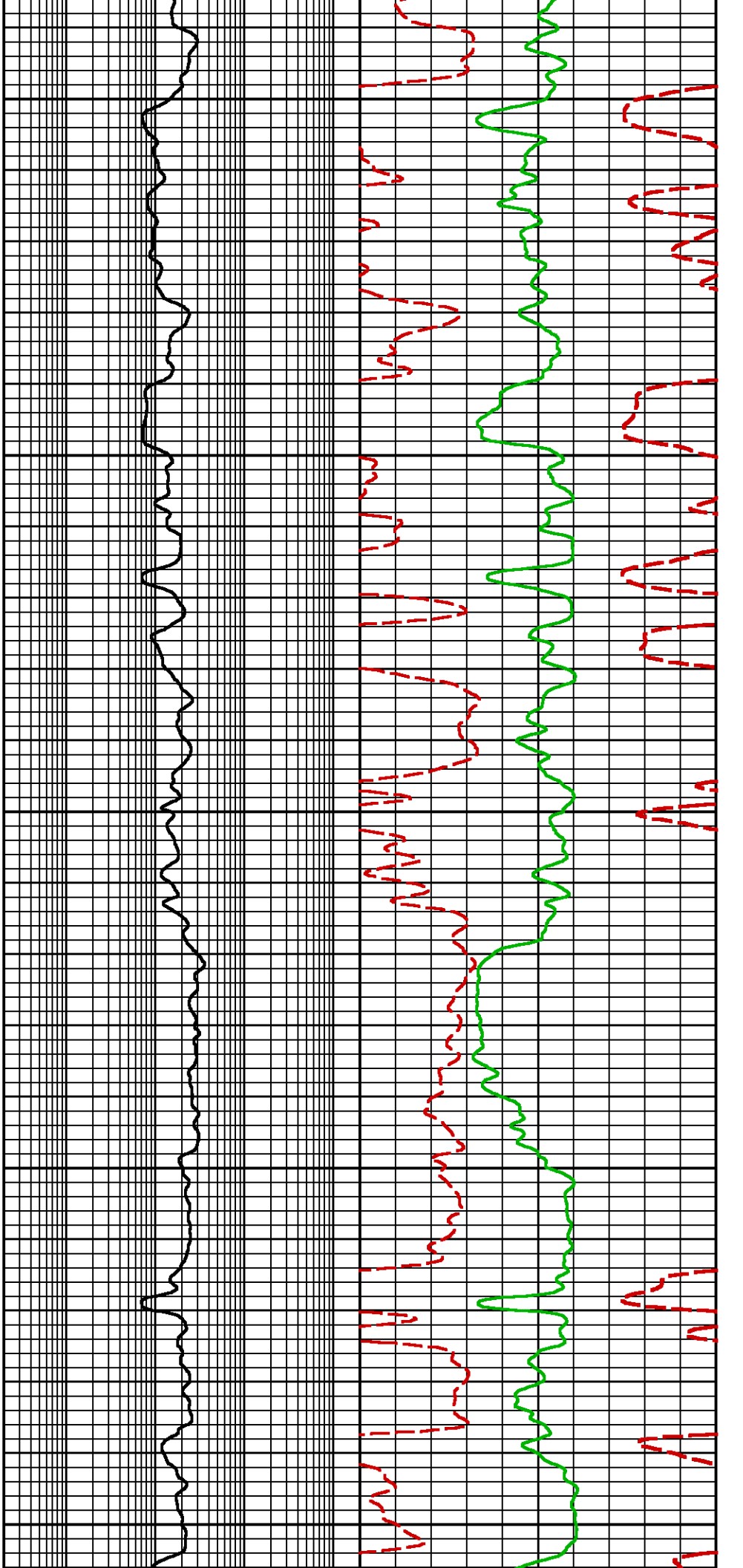
BOND LOG IS DEPTH REFERENCE LOG

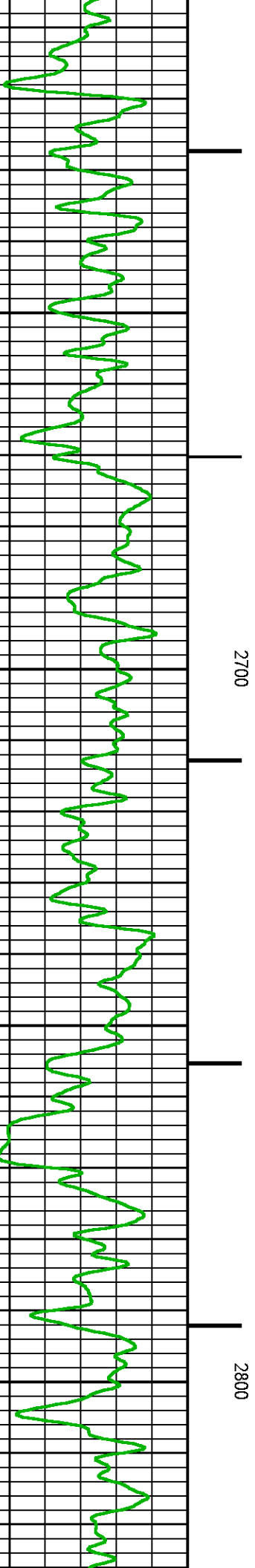
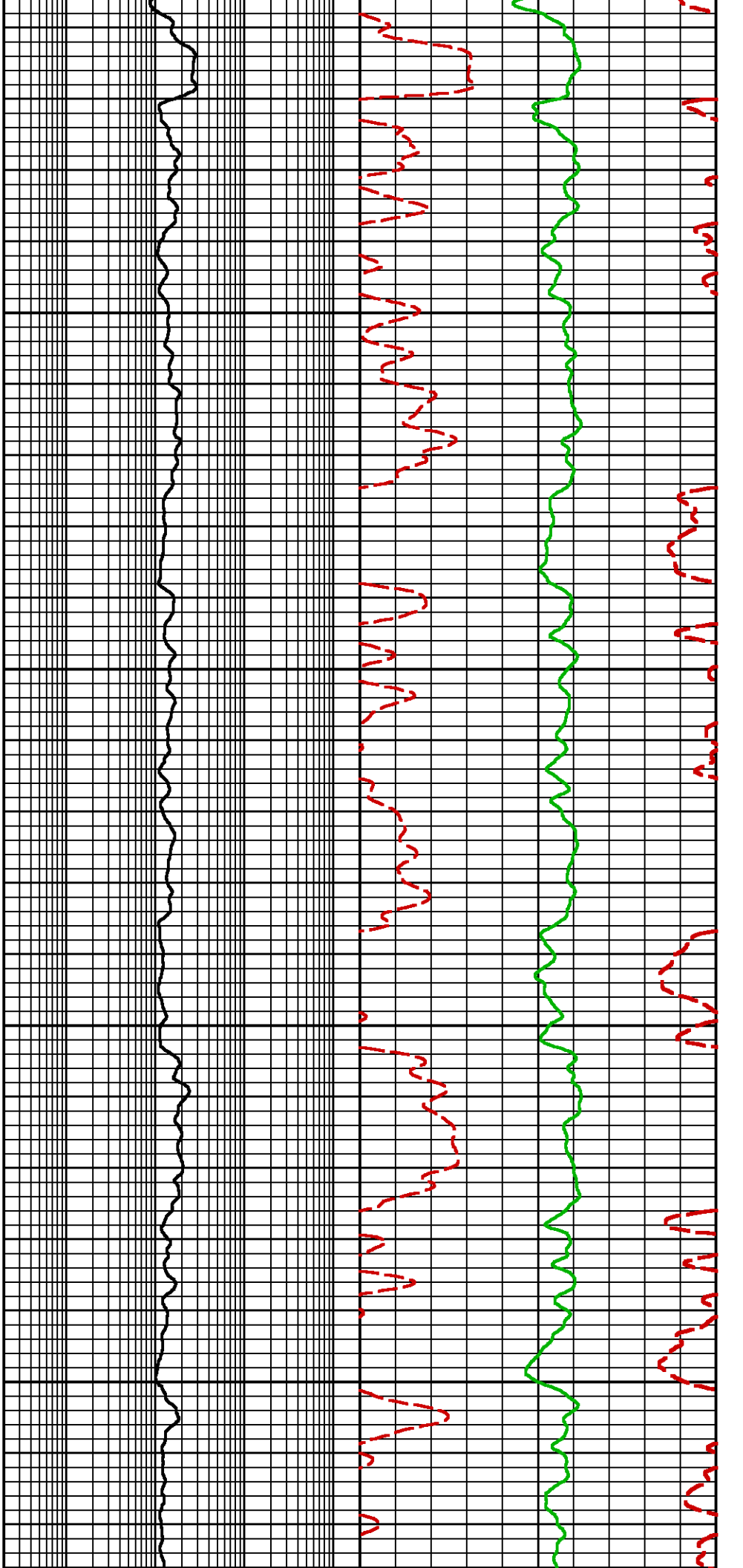
NEO RESULTS FOR NICHOLS 0994-24-19E (G-SAND)

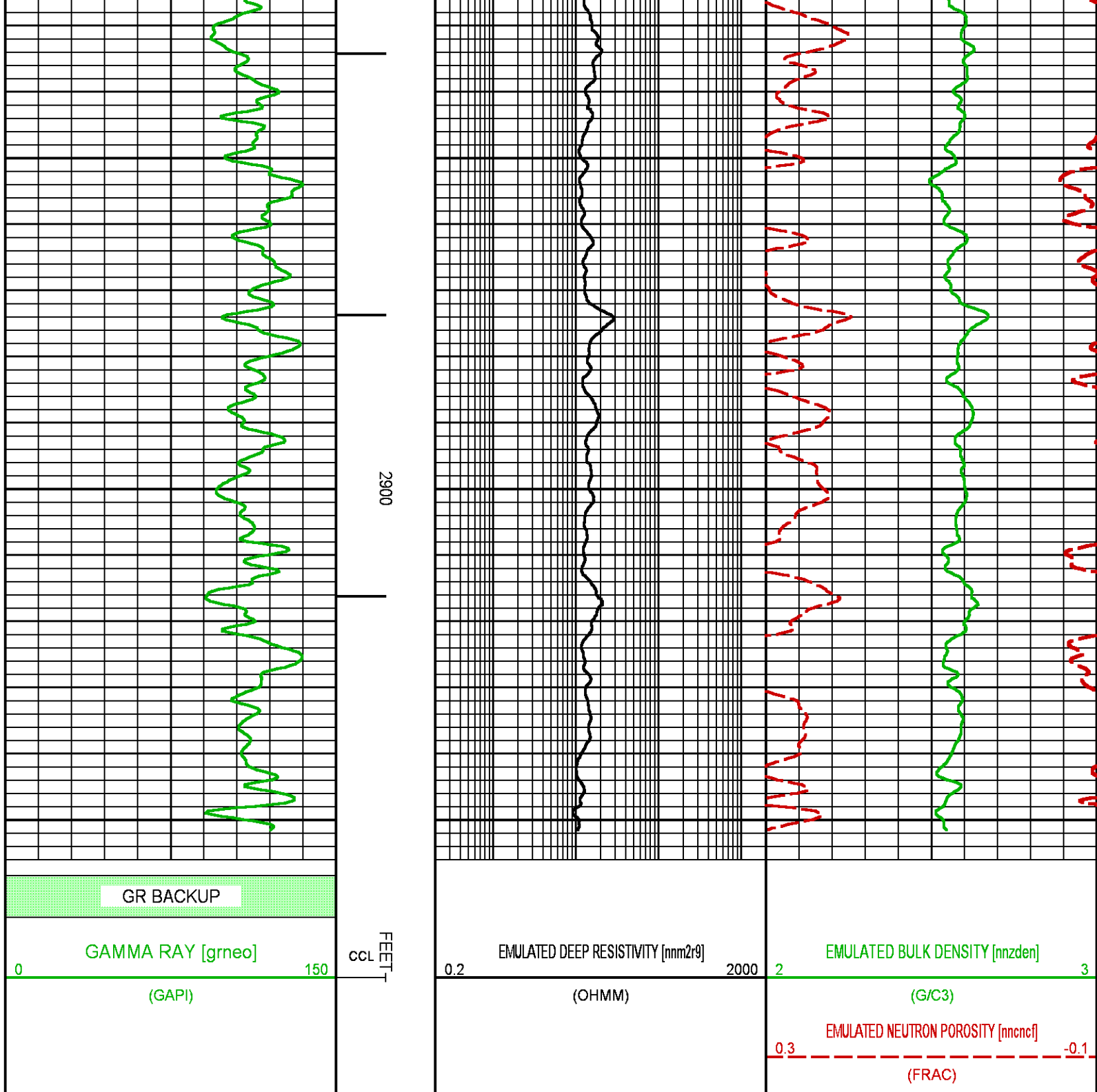
Project : NA
User : ellskima
Presentation : BHI3BKZH12:C:\Ape_Projects\laramie_nichols_24_19e\NEO_PRESENTATION_LARAMIE_G-Sand.pdf [5"/100' Scale]
Plot Interval : 2284.25 - 2955 Feet

Data File 1 : F1 : BHI3BKZH12:C:\Ape_Projects\laramie_nichols_24_19e\Merged_Set_Final.xtf
Created On : N/A
Company : LARAMIE ENERGY LLC
Well : NICHOLS FEDERAL 0994-24-19E
Field : VEGA
File Interval : 2284.25 - 2956.25 Feet
OCT : NA





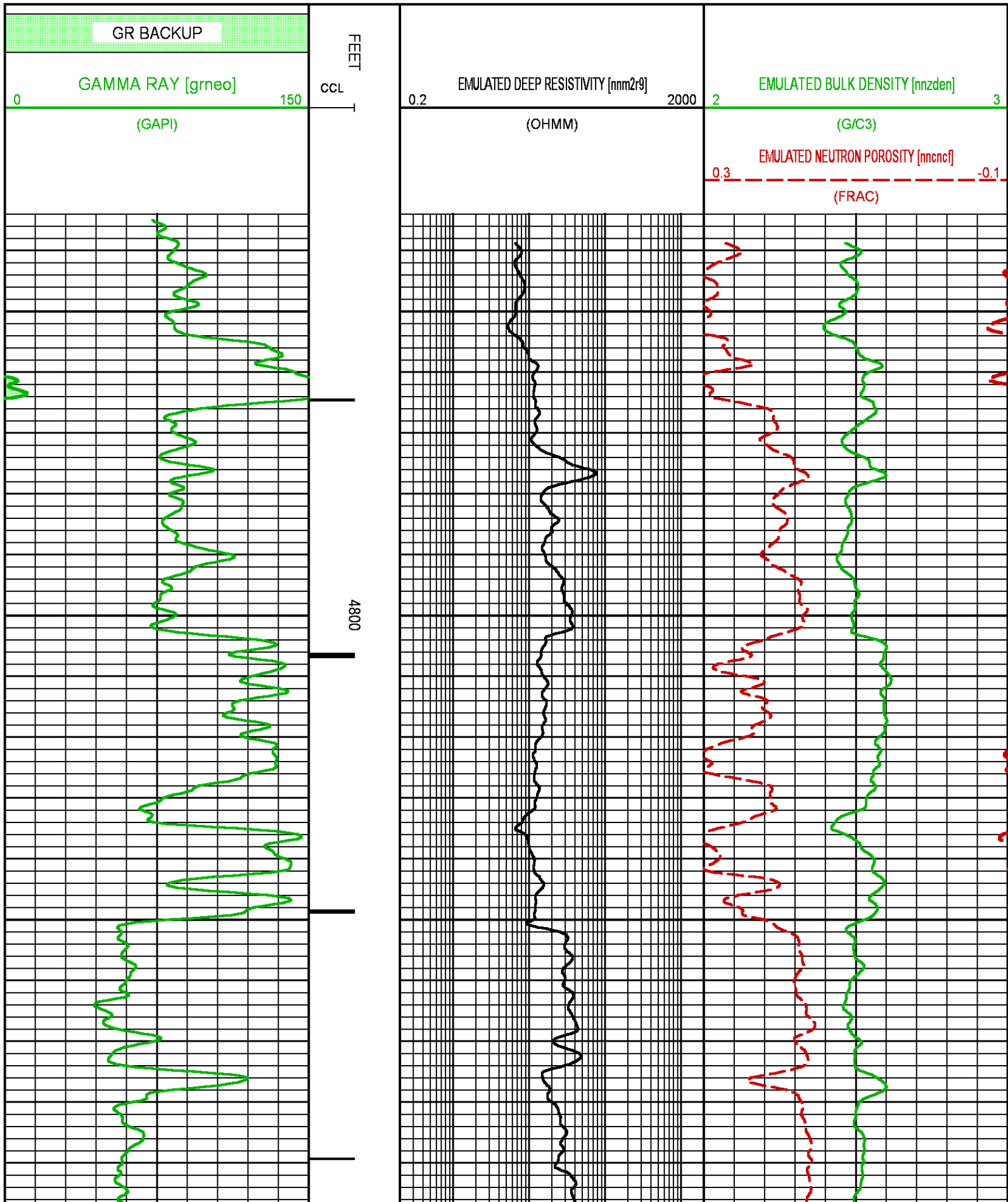


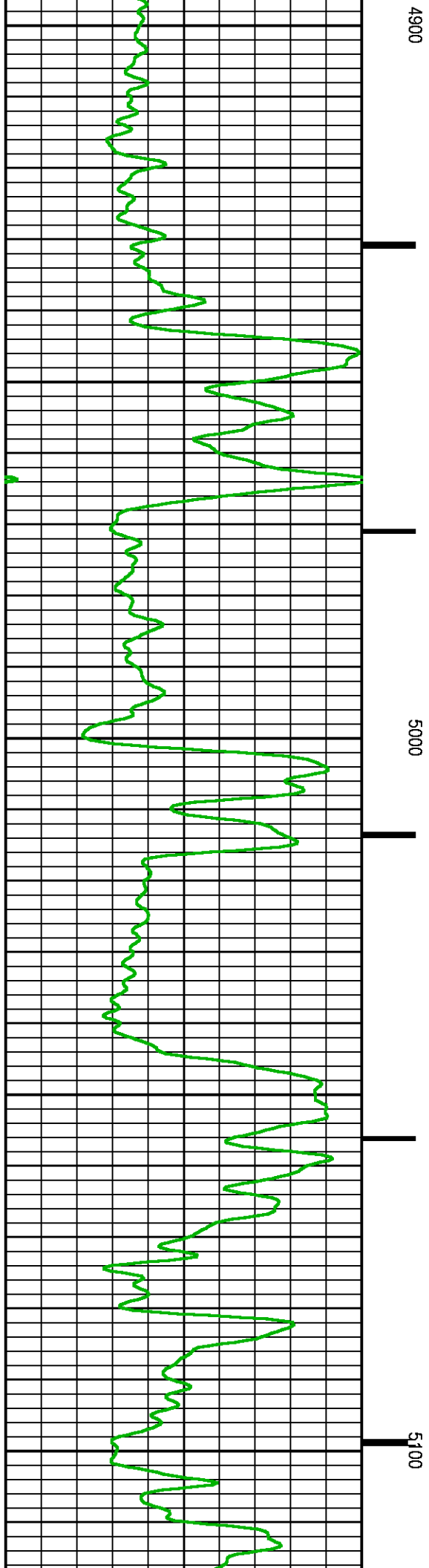
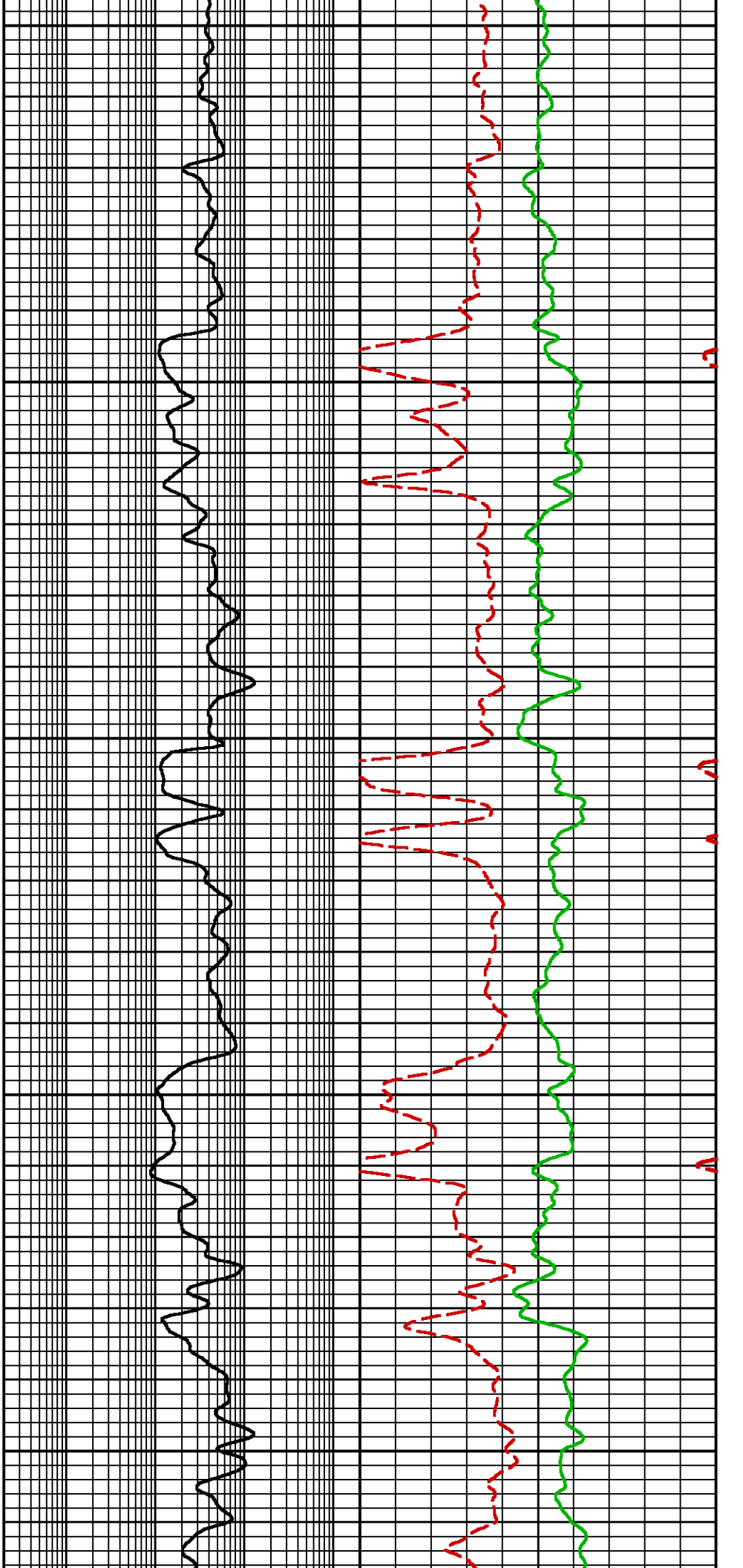


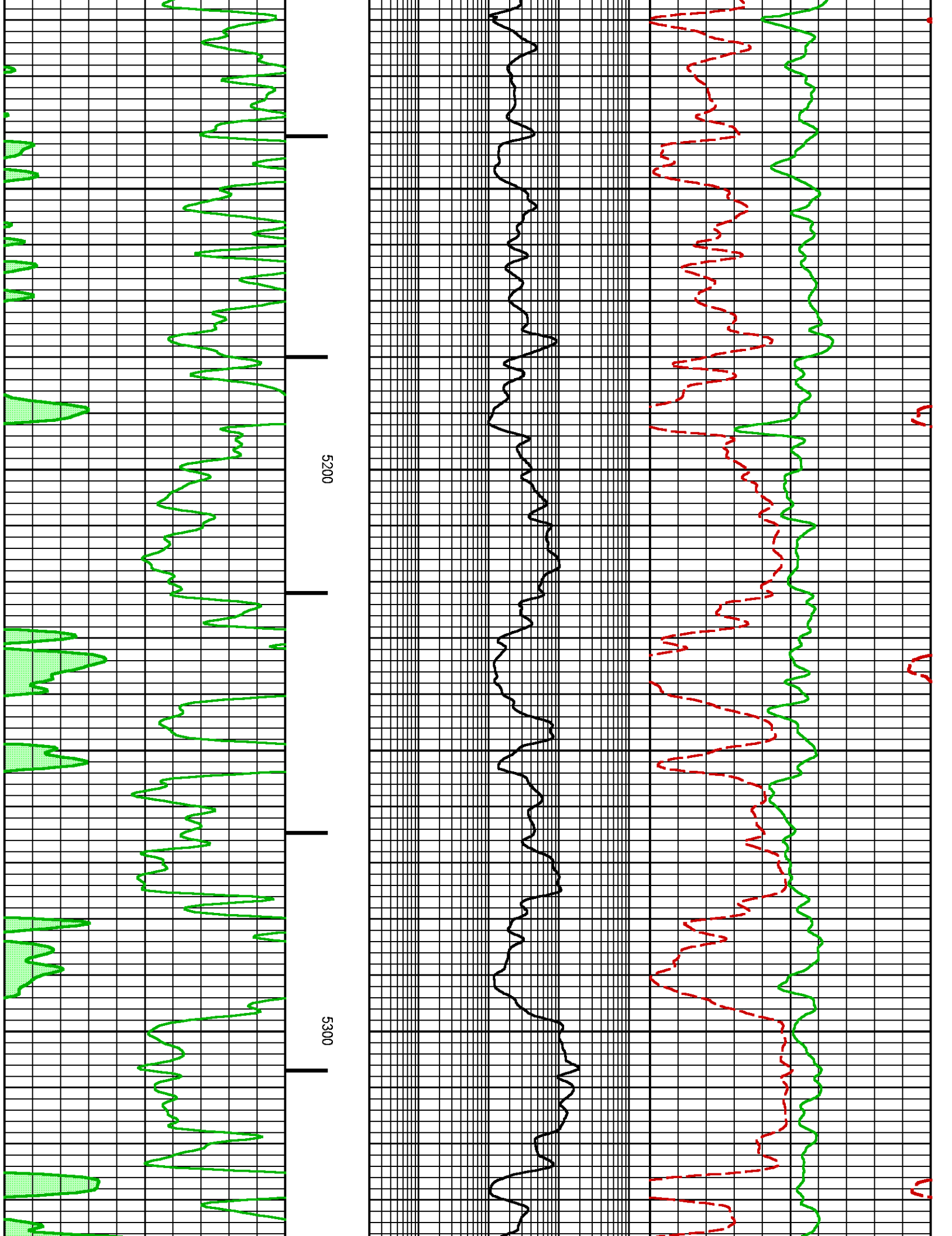
NEO RESULTS FOR NICHOLS 0994-24-19E (MAIN)

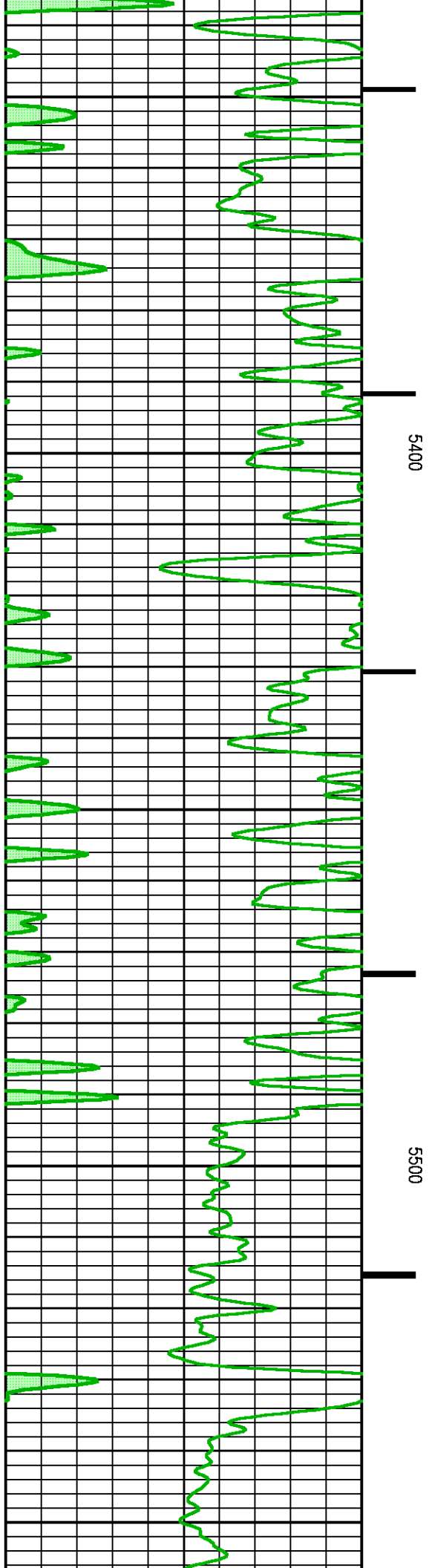
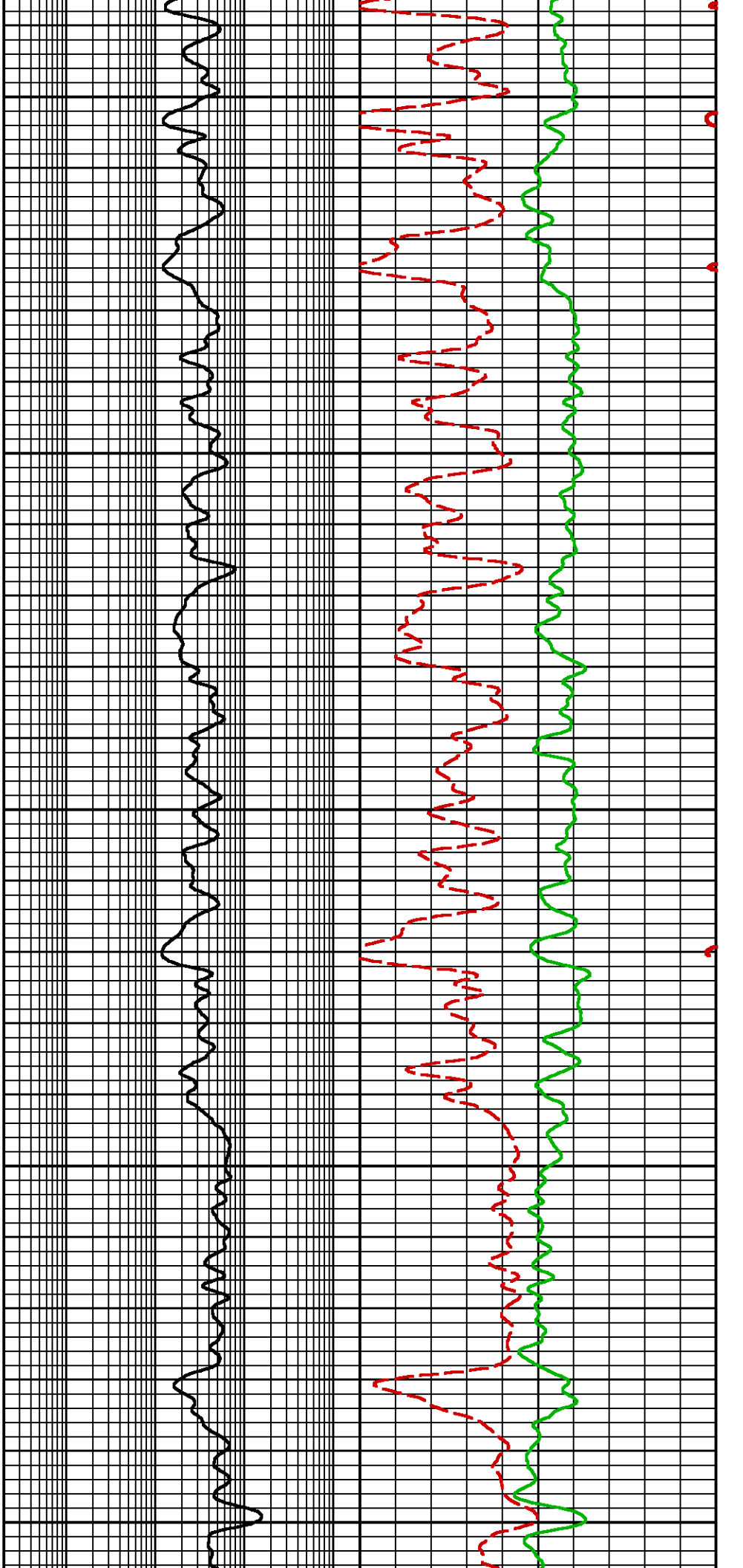
Project : NA
User : ellskima
Presentation : BHI3BKZH12:C:\Ape Projects\laramie_nichols_24_19e\NEO_PRESENTATION_LARAMIE_MAIN.pdf [5"/100" Scale]
Plot Interval : 4735 - 7956.25 Feet

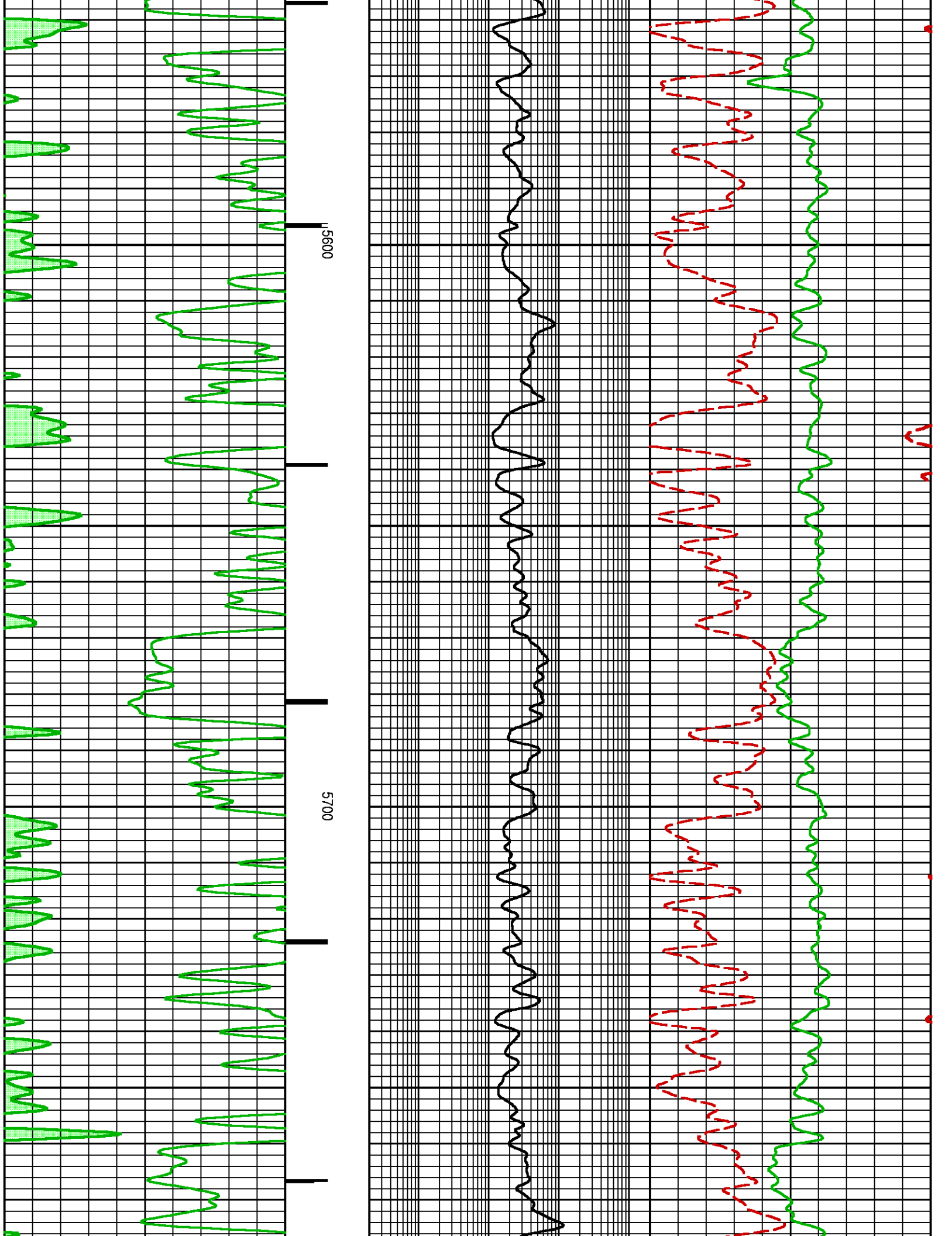
Data File 1 : F1 : BHI3BKZH12:C:\Ape_Projects\laramie_nichols_24_19e\Merged_Set_Final.xtf
Created On : N/A
Company : LARAMIE ENERGY LLC
Well : NICHOLS FEDERAL 0994-24-19E
Field : VEGA
File Interval : 2284.25 - 7956.25 Feet
OCT : NA

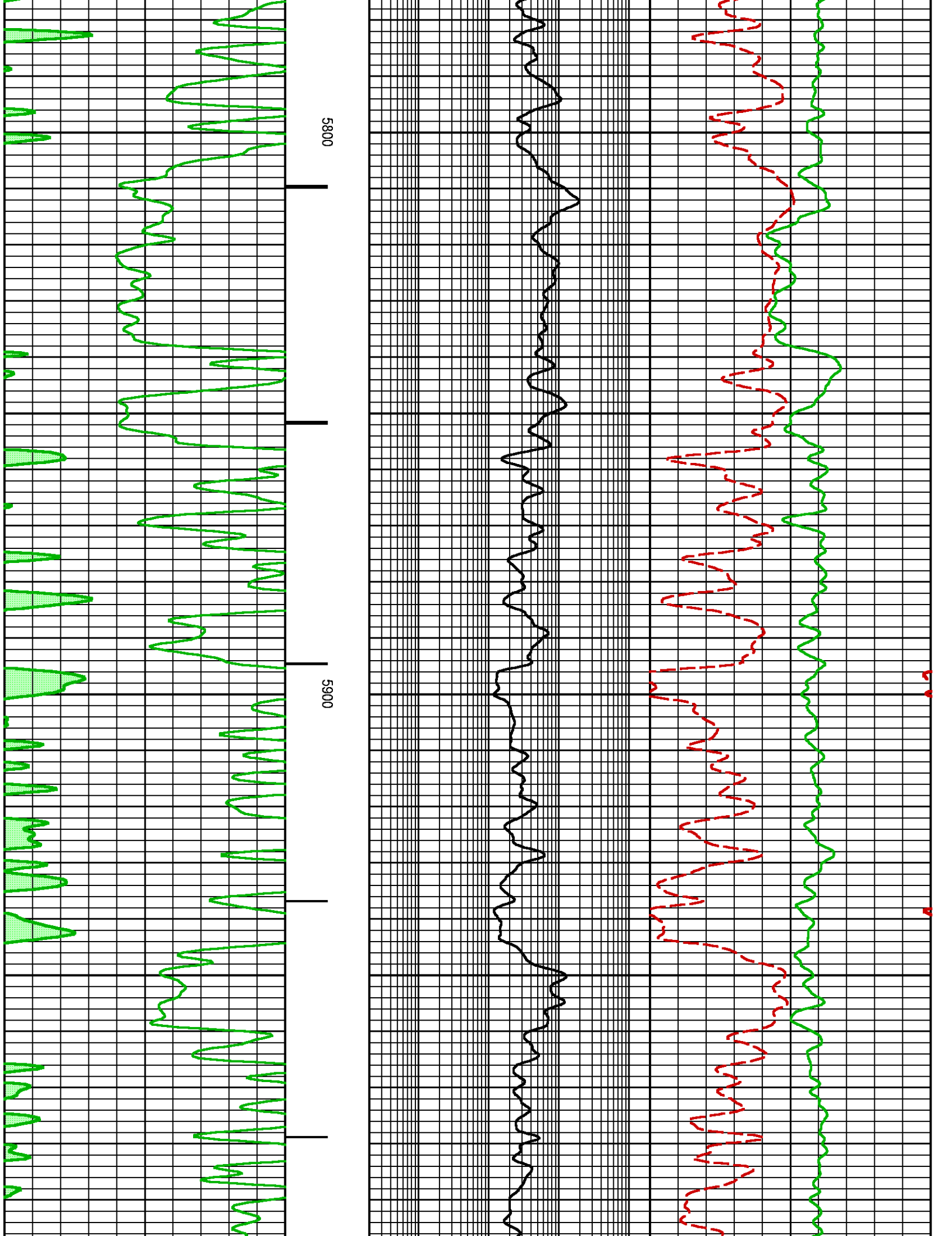


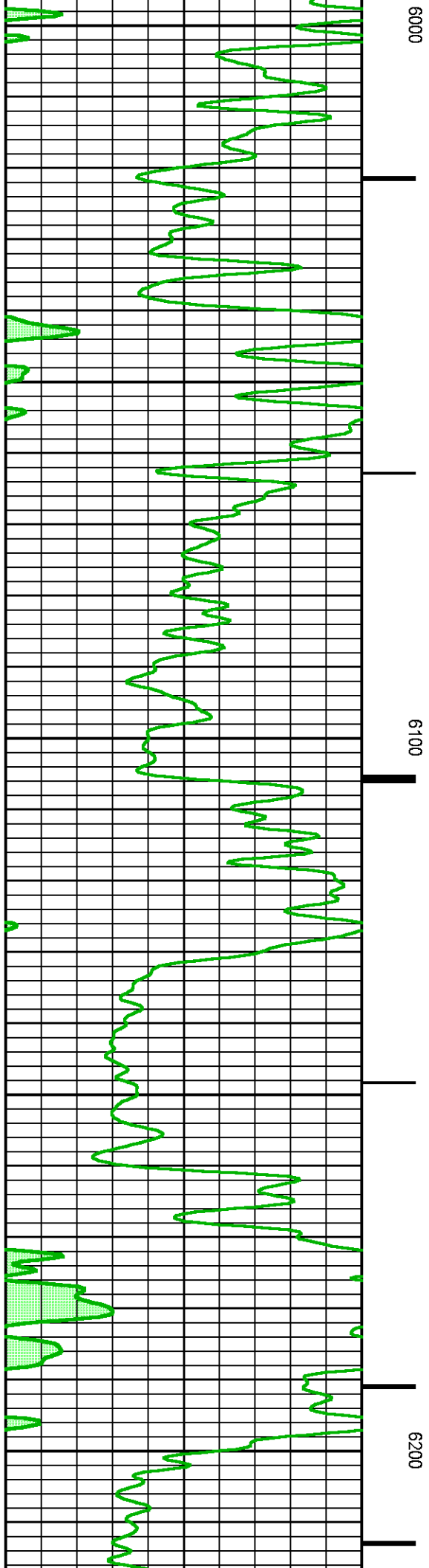
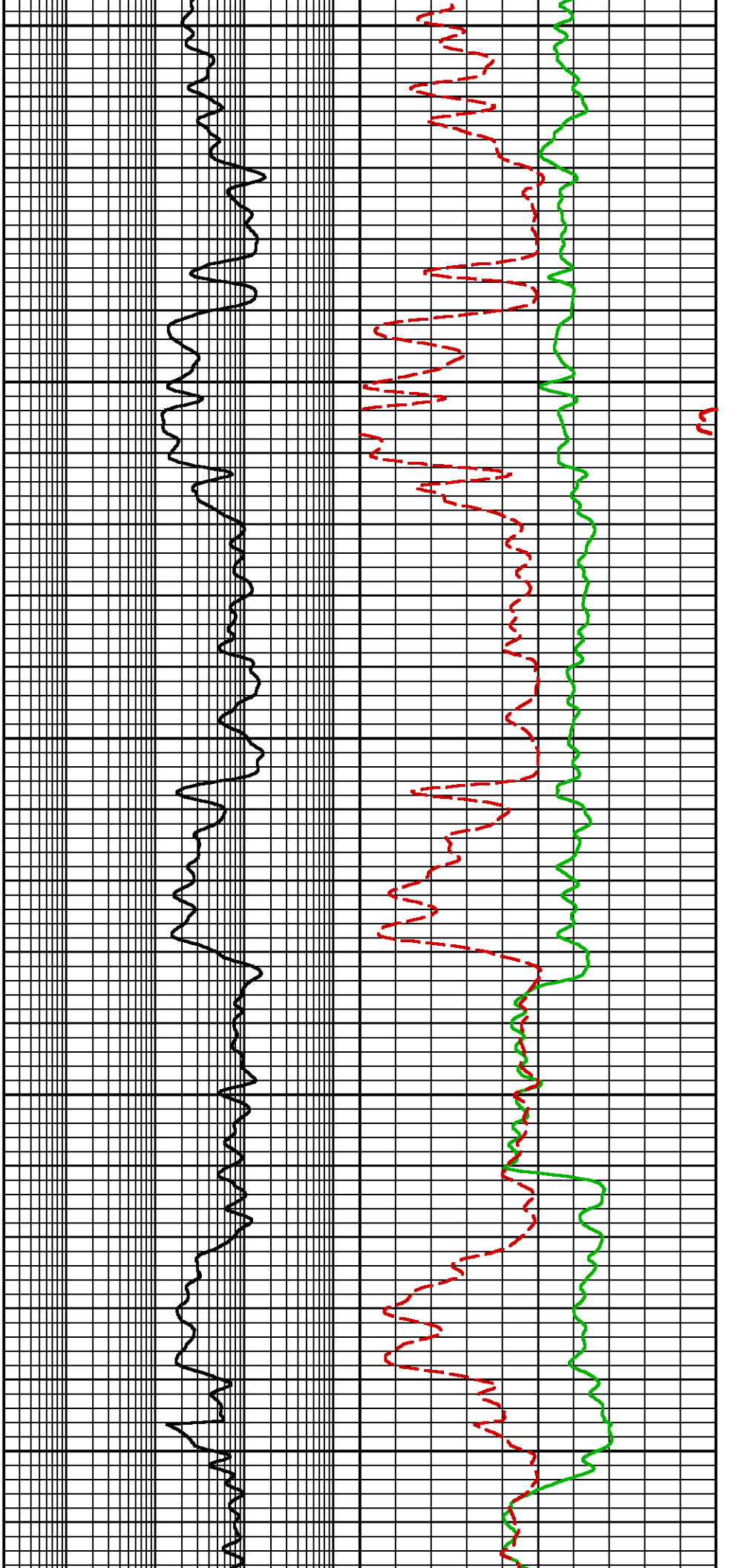


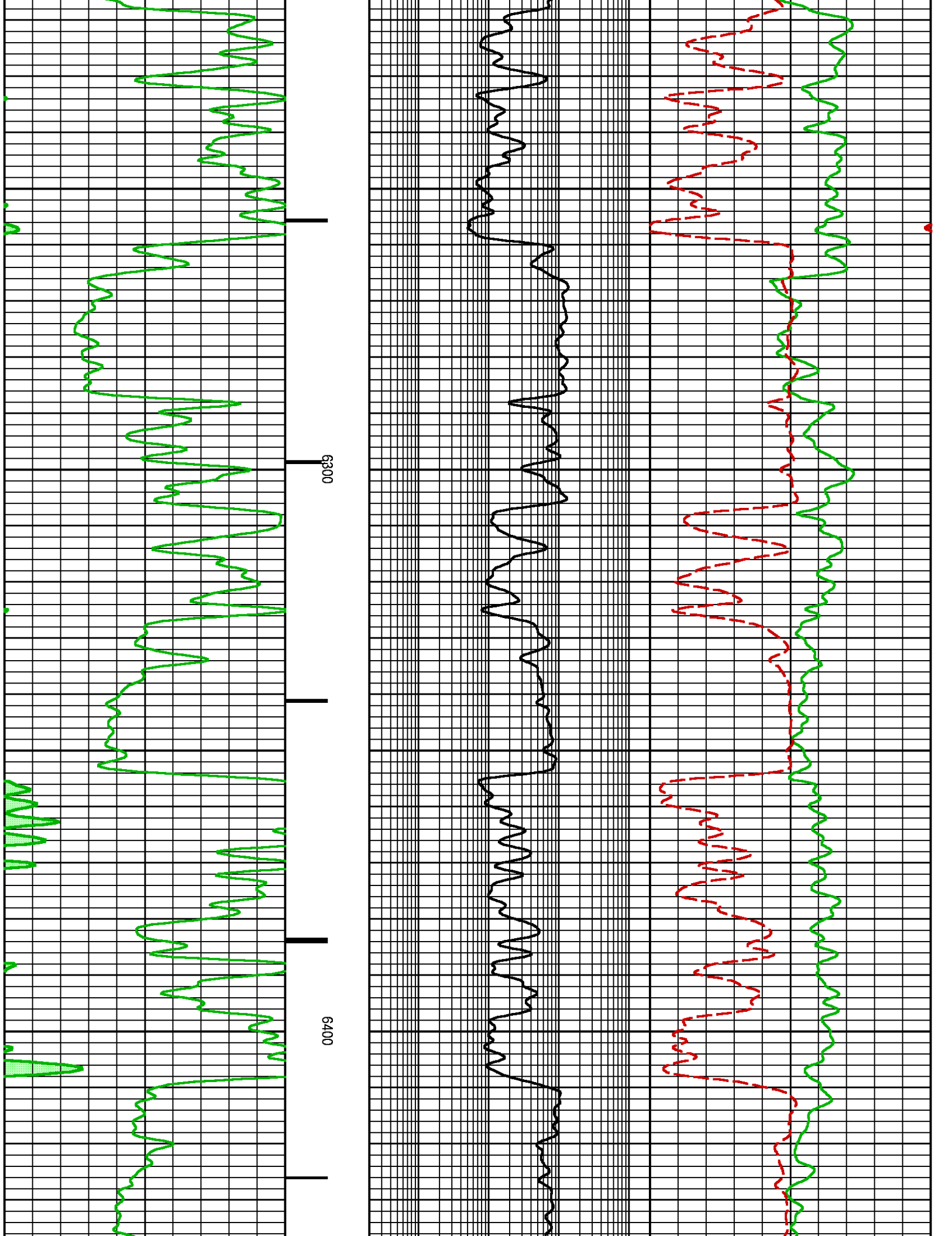


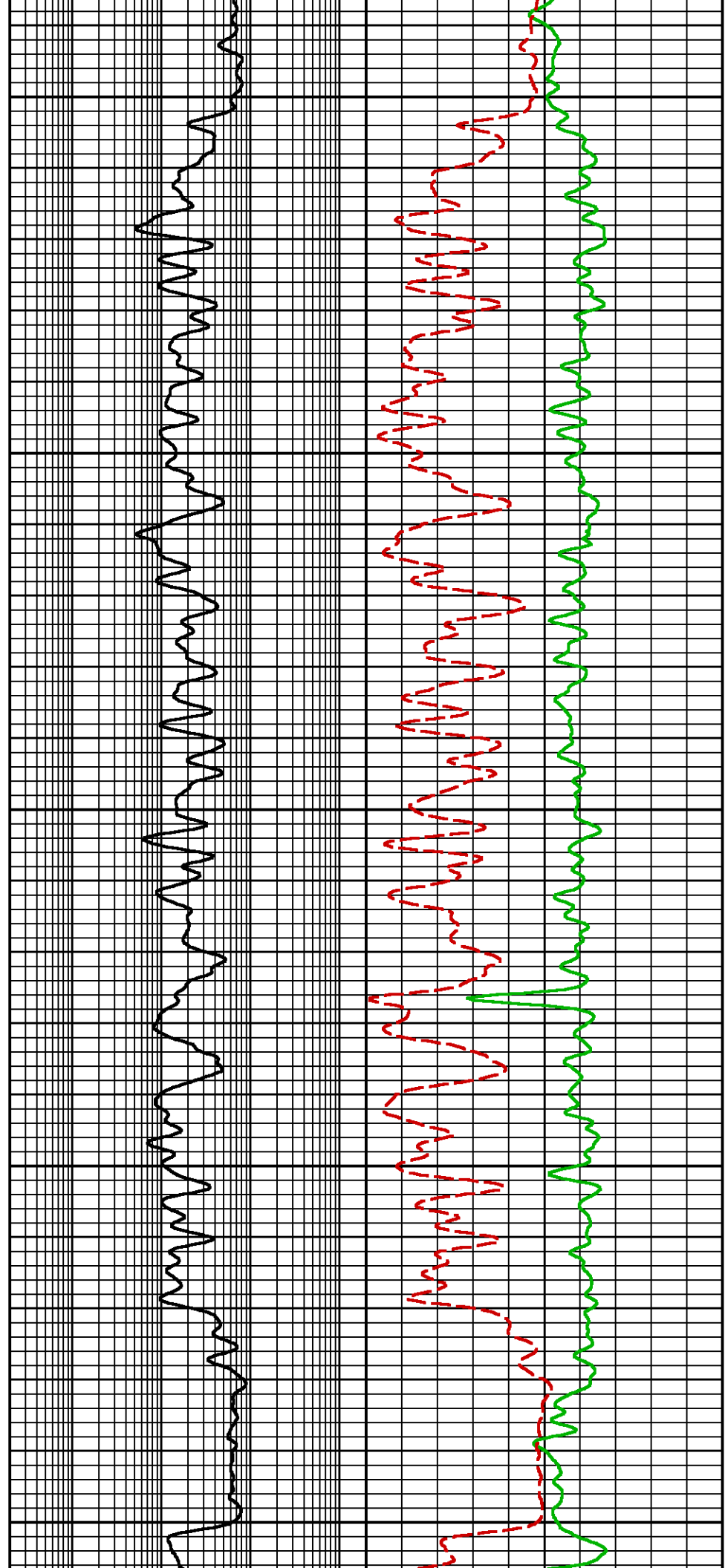
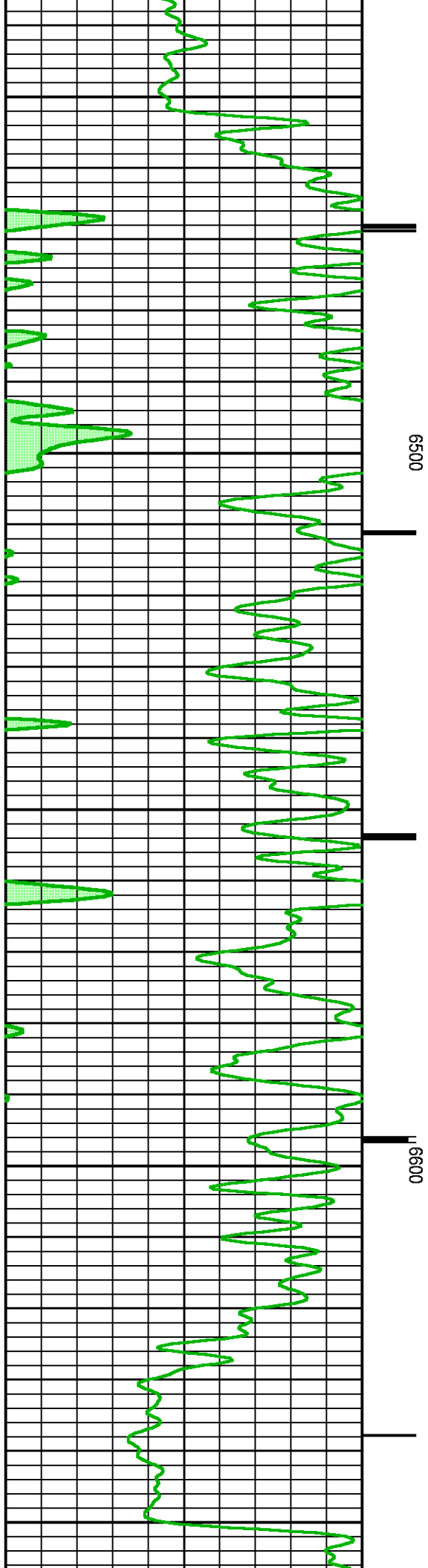


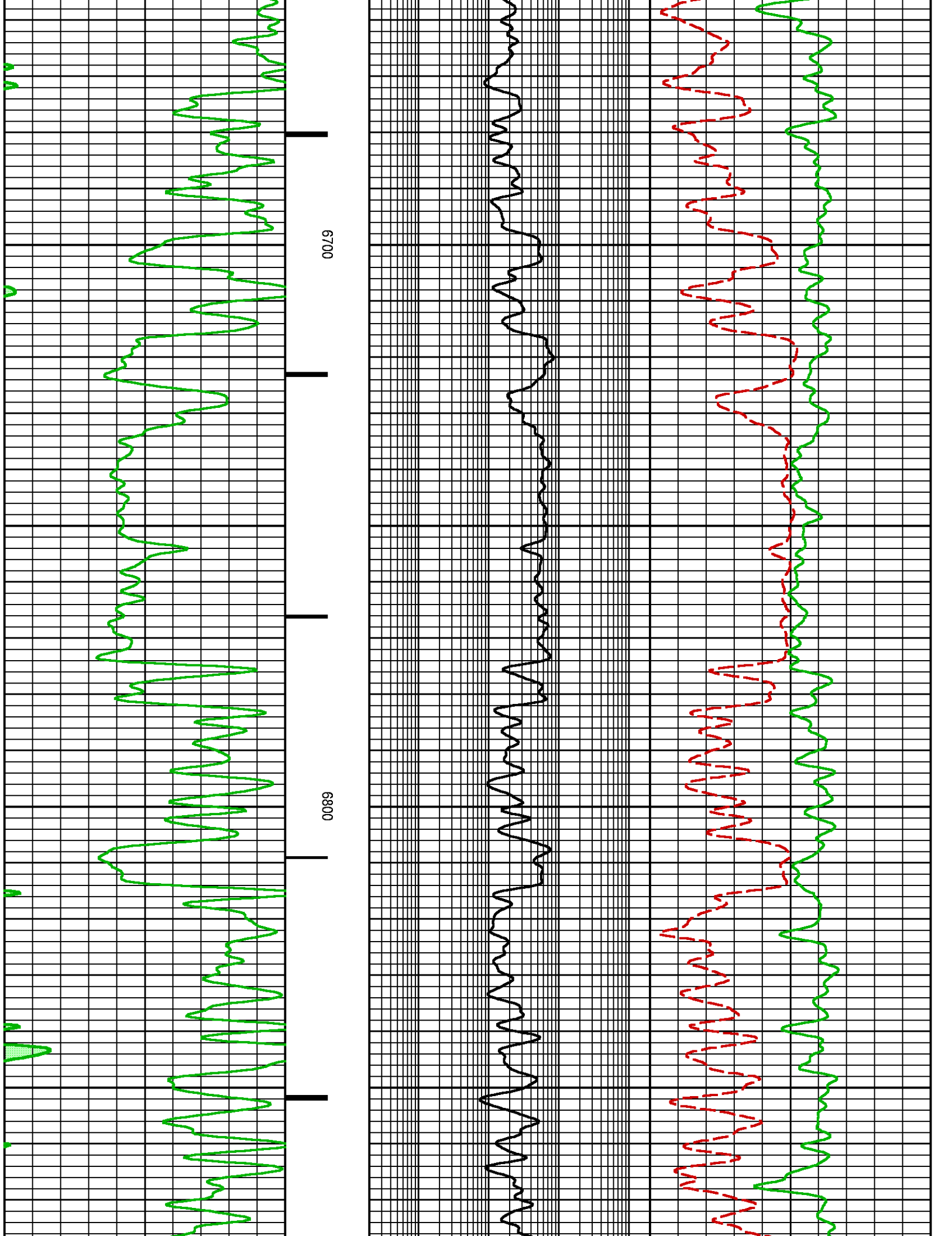


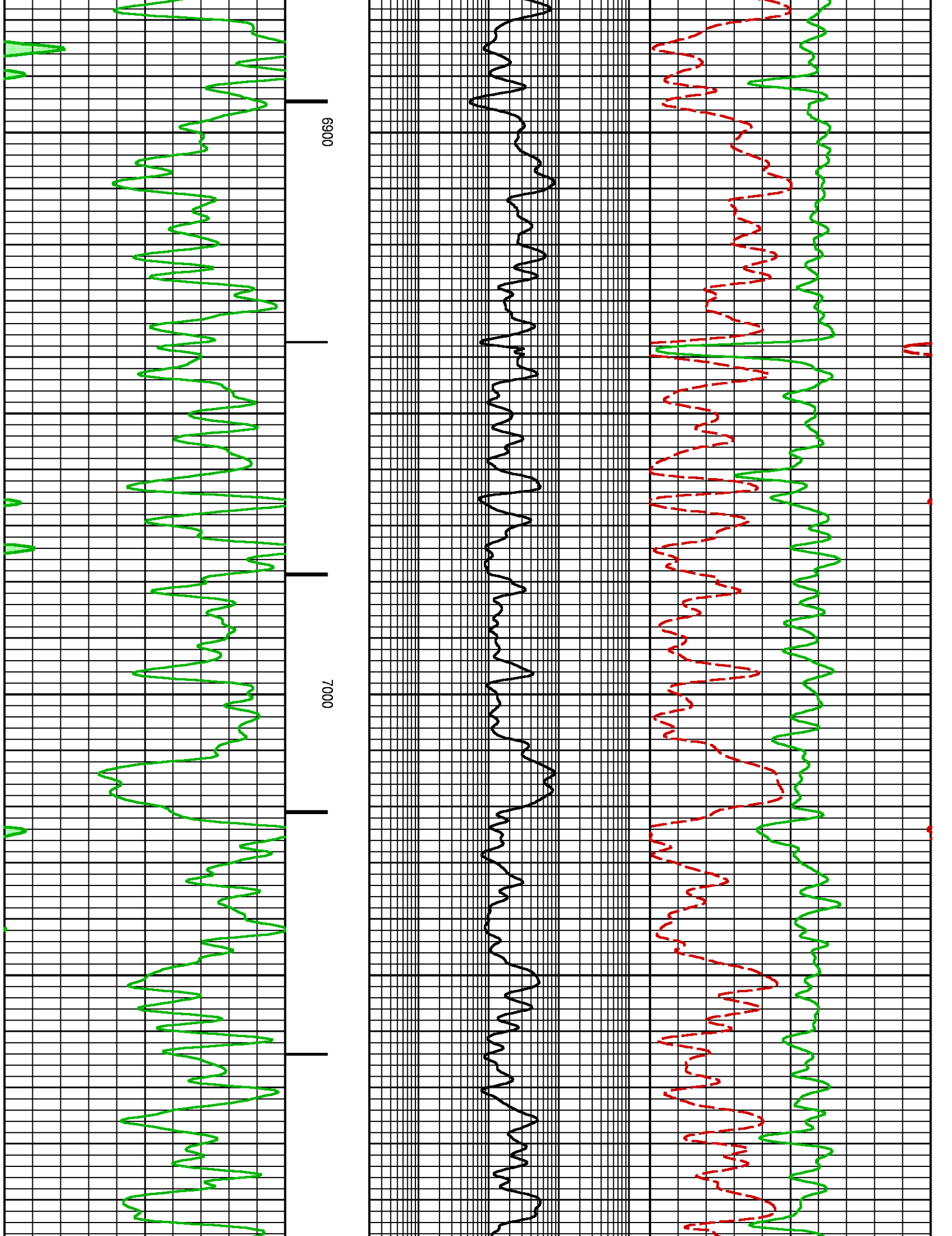


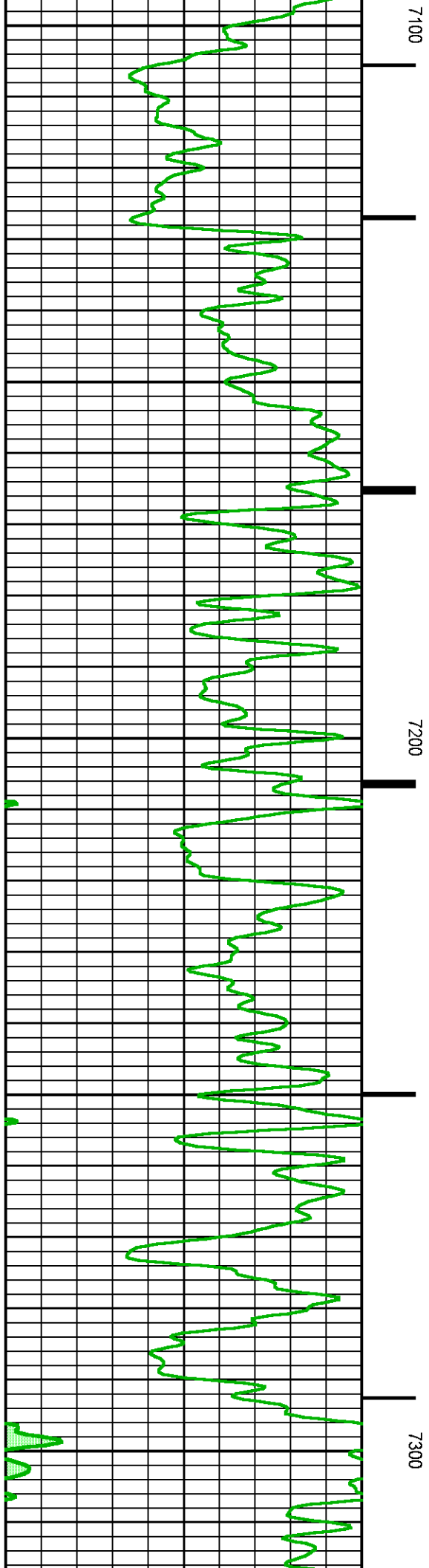
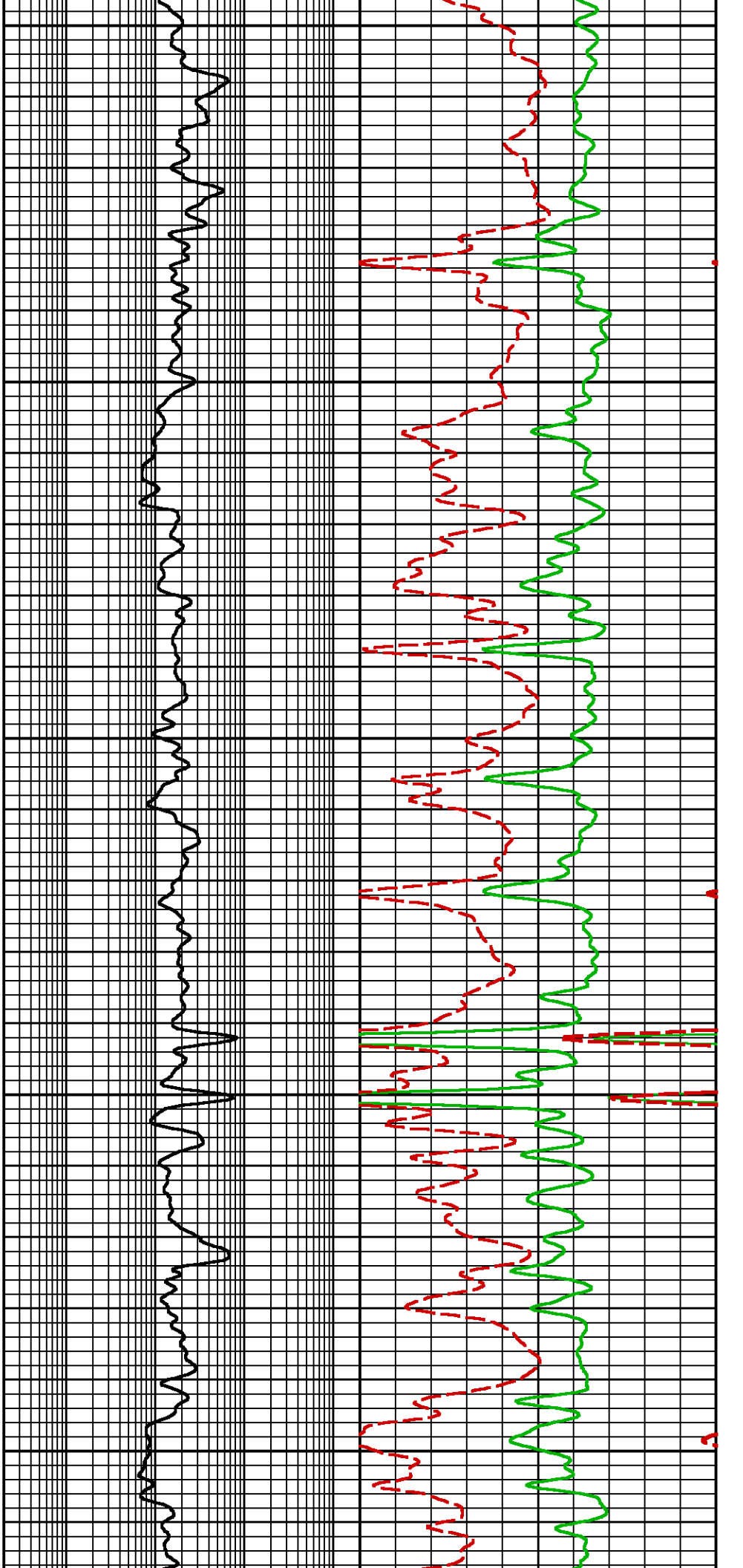


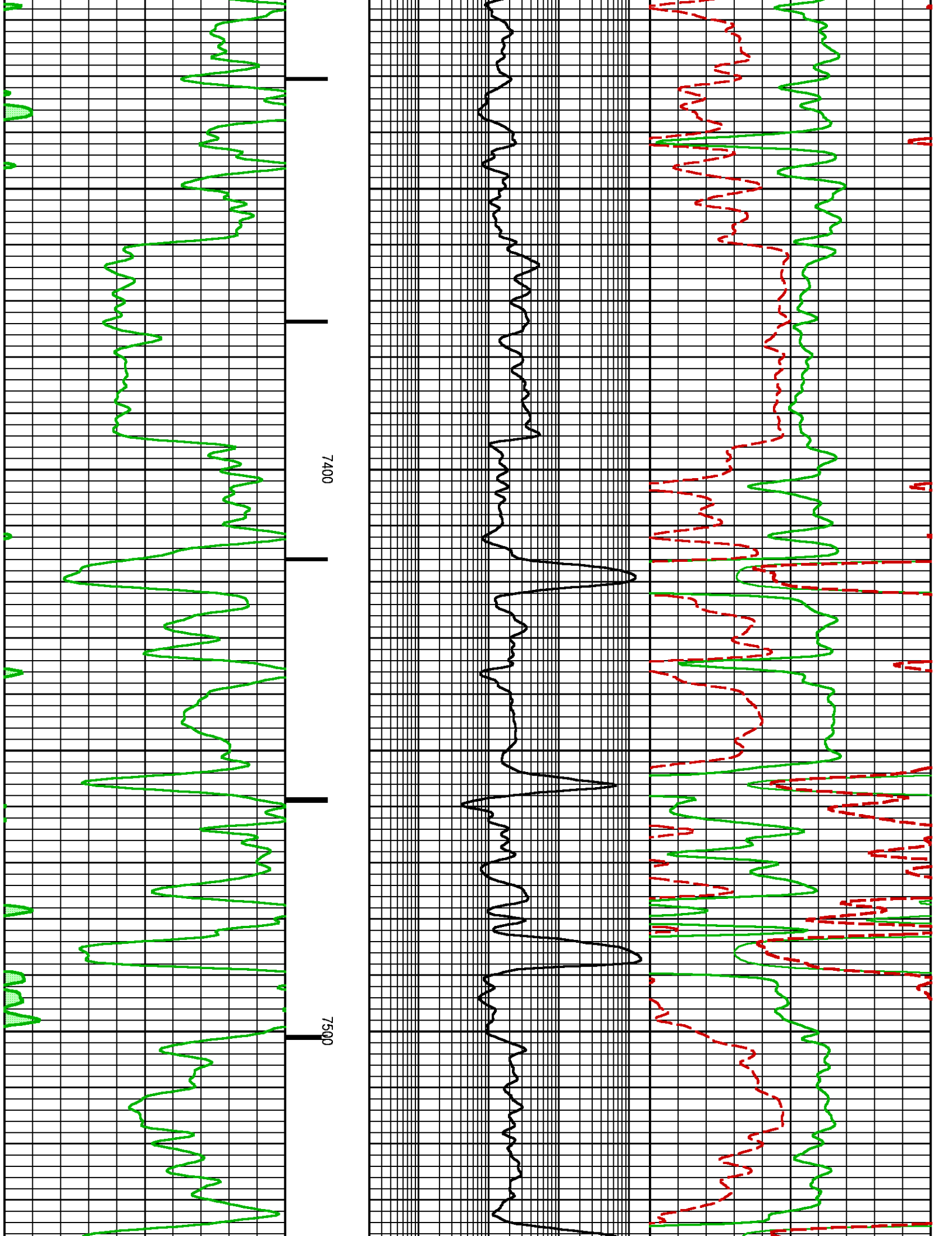


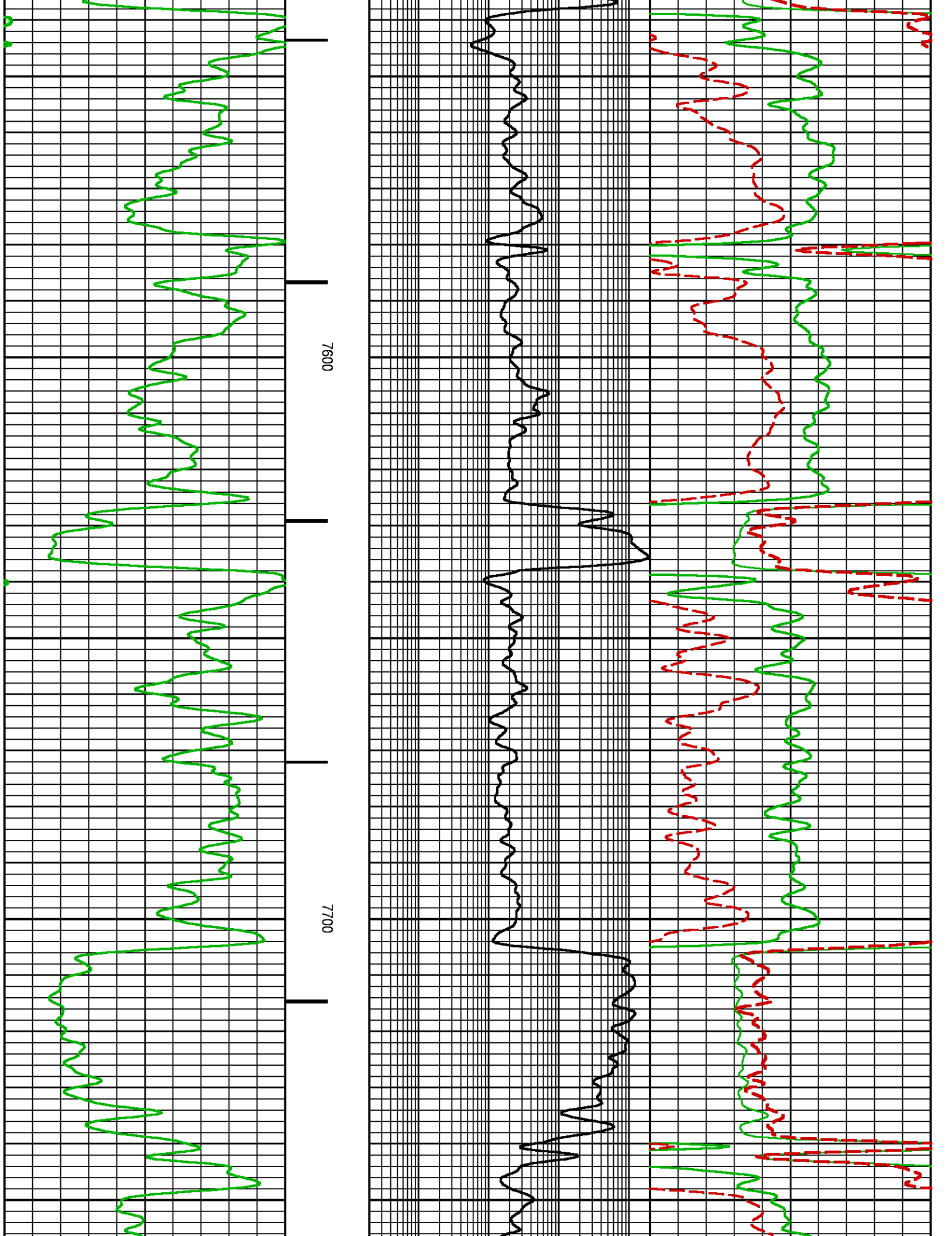


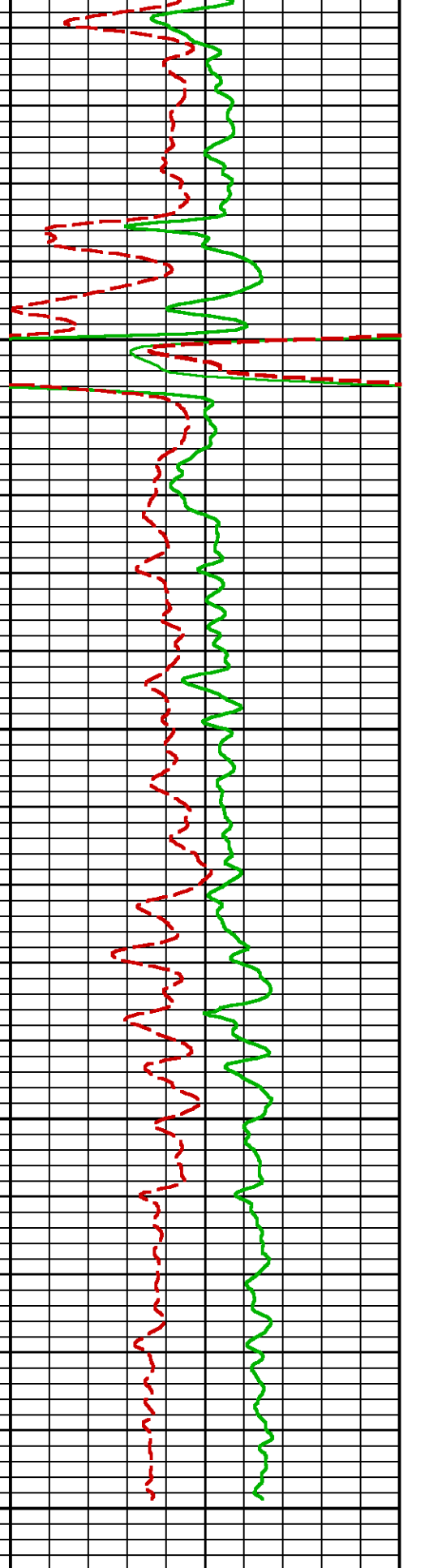
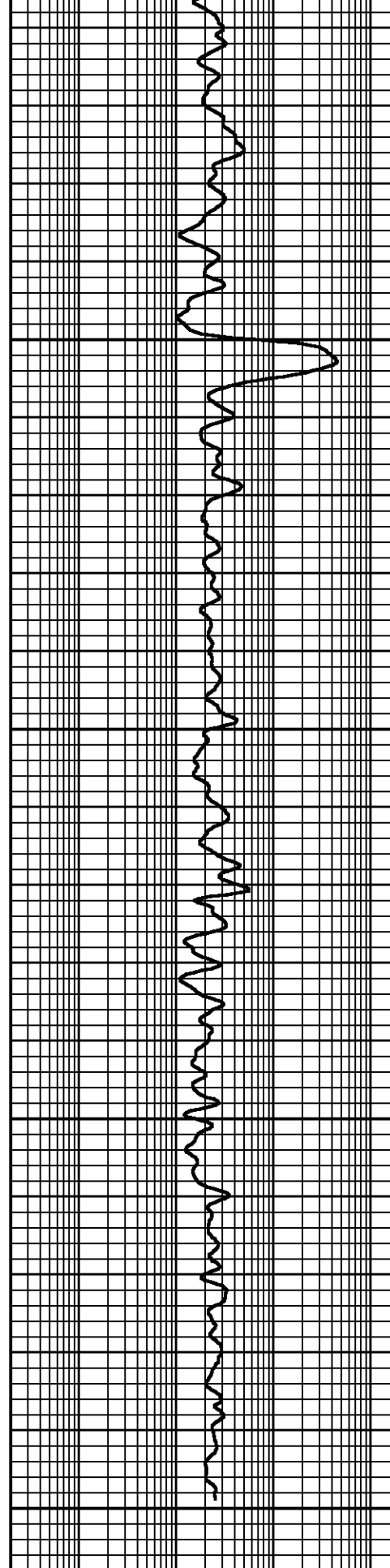
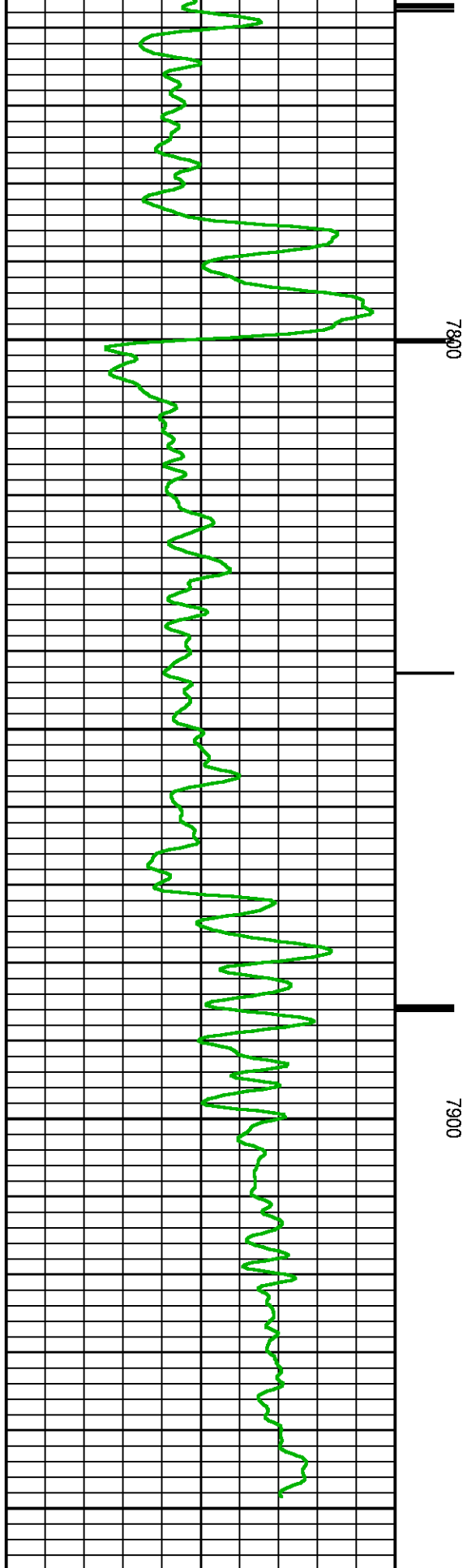












(GAPI)

(OHMM)

(G/C3)

EMULATED NEUTRON POROSITY [nnncf]

0.3

-0.1

(FRAC)

**BAKER
HUGHES**
a GE company



COMPANY

LARAMIE ENERGY LLC

WELL

NICHOLS FEDERAL 0994-24-19E

FIELD

VEGA

COUNTY

MESA

STATE

COLORADO

FILE NO:

API NO:

05-077-10393-0000

LOCATION:

SEE REMARKS

ELEVATIONS:

KB 7236 FT

DF

GL 7212 FT

SEC 24

TWP 9S

RGE 94W

DATE

16-JUL-2018

Pulsed Neutron
Formation Evaluation

