



Laramie Energy

End of Well Cement Report

Nichols Federal 0994-24-18E 05-077-10386

S:24 T:9S R:94W Mesa CO

Quote #: 10827/10969

I Execution #: 06203/06347



Laramie Energy

Attention: Mr. Aaron Duncan | (303) 339-4913 | aduncan@laramie-energy.com

Laramie Energy | 1401 17th St, Suite 1400 | Denver, CO 80202

Dear Mr. Duncan,

Thank you for the opportunity to provide cementing services on this well. BJ Services strives to achieve complete customer satisfaction. If you have any questions regarding the services or data provided, please contact BJ Services at any time.

Sincerely,

Zen Keith
Field Engineer III | (307) 757-7178 | Zen.Keith@BJServices.com

Field Office 28730 US-6, Rifle, CO 81650
Phone: (970) 632-2412

Sales Office 999 18th St. Suite 1200 Denver, CO 80202
Phone: (281) 408-2361

Cementing Treatment



Start Date	4/29/2018	Well	Nichols Federal 0994-24-18E
End Date	4/29/2018	County	MESA
Client	LARAMIE ENERGY	State/Province	CO
Client Field Rep	Roger Foster	API	05-077-10386
Service Supervisor	Jerod Dent	Formation	-
Field Ticket No.	Surface	Rig	H&P 290
District	Rifle, CO	Type of Job	Surface

WELL GEOMETRY

Type	ID (in)	OD (in)	Wt. (lb/ft)	MD (ft)	Excess(%)	Grade	Thread
Previous Casing	15.25	16.00	65.00	60.00	0.00		
Open Hole	11.00			1,030.00	48.00		
Open Hole	11.00			1,573.00	75.00		
Casing	8.02	8.63	28.00	1,563.00		J-55	ST&C

Shoe Length (ft): 40

HARDWARE

Bottom Plug Used?	Yes	Tool Type	Float Collar
Bottom Plug Provided By	Non BJ	Tool Depth (ft)	1,517.50
Bottom Plug Size	8.625	Max Tubing Pressure - Rated (psi)	-
Top Plug Used?	Yes	Max Tubing Pressure - Operated (psi)	-
Top Plug Provided By	Non BJ	Max Casing Pressure - Rated (psi)	2,530.00
Top Plug Size	8.625	Max Casing Pressure - Operated (psi)	2,020.00
Centralizers Used	Yes	Pipe Movement	None
Centralizers Quantity	-	Job Pumped Through	Manifold
Centralizers Type	Bow	Top Connection Thread	8RD
Landing Collar Depth (ft)	1,490	Top Connection Size	8.625

Cementing Treatment



CIRCULATION PRIOR TO JOB

Well Circulated By	Rig	Solids Present at End of Circulation	No
Circulation Prior to Job	Yes	10 sec SGS	-
Circulation Time (min)	30.00	10 min SGS	-
Circulation Rate (bpm)	8.00	30 min SGS	-
Circulation Volume (bbls)	240.00	Flare Prior to/during the Cement Job	No
Lost Circulation Prior to Cement Job	No	Gas Present	No
Mud Density In (ppg)	9.30	Gas Units	0
Mud Density Out (ppg)	-		
PV Mud In	-		
PV Mud Out	-		
YP Mud In	-		
YP Mud Out	-		

TEMPERATURE

Ambient Temperature (°F)	55.00	Slurry Cement Temperature (°F)	64.00
Mix Water Temperature (°F)	62.00	Flow Line Temperature (°F)	82.00

BJ FLUID DETAILS

Fluid Type	Fluid Name	Density (ppg)	Yield (Cu Ft/sk)	H2O Req. (gals/sk)	Planned Top of Fluid (Ft)	Length (Ft)	Vol (sk)	Vol (Cu Ft)	Vol (bbls)
Spacer / Pre Flush / Flush	Fresh Water	8.33			0.00				40.00
Lead Slurry	BJCem S100.3.01D	12.00	2.5329	14.89	0.00	1,030.00	170	417.00	74.20
Tail Slurry	BJCem S100.3.01D	12.50	2.2282	12.62	1,030.00	500.00	107	237.00	42.10
Displacement Final	Water	8.33			0.00			0.00	93.00

Cementing Treatment



Fluid Type	Fluid Name	Component	Concentration	UOM
Lead Slurry	BJCem S100.3.01D	CEMENT EXTENDER,SODIUM METASILICATE A-2 ANHYDROUS	2.0000	LBS/SK
Lead Slurry	BJCem S100.3.01D	CEMENT EXTENDER, GYPSUM, A-10	5.0000	BWOB
Lead Slurry	BJCem S100.3.01D	ACCELERATOR, SALT, CHLORIDE, CALCIUM, A-7P, PELLETS	2.0000	LBS/SK
Lead Slurry	BJCem S100.3.01D	CEMENT, ASTM TYPE III	100.0000	PCT
Lead Slurry	BJCem S100.3.01D	IntegraSeal CELLO	0.1300	LBS/SK
Lead Slurry	BJCem S100.3.01D	Foam Preventer, FP-25	0.3000	BWOB
Tail Slurry	BJCem S100.3.01D	CEMENT, ASTM TYPE III	100.0000	PCT
Tail Slurry	BJCem S100.3.01D	Foam Preventer, FP-25	0.3000	BWOB
Tail Slurry	BJCem S100.3.01D	CEMENT EXTENDER,SODIUM METASILICATE A-2 ANHYDROUS	2.0000	LBS/SK
Tail Slurry	BJCem S100.3.01D	CEMENT EXTENDER, GYPSUM, A-10	5.0000	BWOB
Tail Slurry	BJCem S100.3.01D	ACCELERATOR, SALT, CHLORIDE, CALCIUM, A-7P, PELLETS	2.0000	LBS/SK
Tail Slurry	BJCem S100.3.01D	IntegraSeal CELLO	0.1300	LBS/SK

TREATMENT SUMMARY

Time	Fluid	Rate (bpm)	Fluid Vol. (bbls)	Pipe Pressure (psi)
4/29/2018 12:50 PM	Fresh Water	2.00	40.00	190.00
4/29/2018 1:10 PM	BJCem S100.3.01D	5.50	74.20	220.00
4/29/2018 1:23 PM	BJCem S100.3.01D	5.50	42.10	258.00
4/29/2018 1:37 PM	Water	8.00	93.00	630.00

	Min	Max	Avg
Pressure (psi)	190.00	1,685.00	400.00
Rate (bpm)	0.50	8.00	5.00

Cementing Treatment



DISPLACEMENT AND END OF JOB SUMMARY

Displaced By	BJ	Amount of Cement Returned/Reversed	32.00
Calculated Displacement Volume (bbls)	92.40	Method Used to Verify Returns	Visual
Actual Displacement Volume (bbls)	92.00	Amount of Spacer to Surface	40.00
Did Float Hold?	Yes	Pressure Left on Casing (psi)	0.00
Bump Plug	Yes	Amount Bled Back After Job	1.50
Bump Plug Pressure (psi)	448.00	Total Volume Pumped (bbls)	252.00
Were Returns Planned at Surface	Yes	Top Out Cement Spotted	No
Cement returns During Job	Full	Lost Circulation During Cement Job	No

EVENT LOG

Service Line Cementing
Client LARAMIE ENERGY
District Rifle, CO



Well: Nichols Federal 0994-24-18E **Quotes:** QUO-10827-S2Q4K7
Job Type: Surface **Plans:** ORD-06203-W1N1D3
BJ Supervisor: Jerod Dent **Executions:** EXC-06203-W1N1D302
BJ Engineer: Gage Putnam

Seq.	Start Dt./Time	End Dt./Time	Duration	Category	Event	Density (ppg)	Pump Rate (bpm)	Pump Vol (bbls)	Pipe Pressure (psi)	Comments
1	04/29/2018 07:00	04/29/2018 07:01	0.02	Mobilization	Callout					BJ CALLED TO LARAMIE NICHOLS 24-18E SURFACE. REQUESTED TIME TO START 14:00
2	04/29/2018 07:01	04/29/2018 07:30	0.48	Mobilization	Leave Location					BJ CREW DEPART FACILITY FOR LOCATION
3	04/29/2018 08:30	04/29/2018 08:31	0.02	Mobilization	Arrive on Location					BJ CREW ARRIVE AT LOCATION
4	04/29/2018 08:31	04/29/2018 08:40	0.15	Operational	Safety Meeting					BJ CREW DISCUSS SPOTTING IN EQUIPMENT AND HAZARDS ON LOCATION
5	04/29/2018 08:40	04/29/2018 08:59	0.32	Operational	Spot Units					BJ CREW SPOT IN EQUIPMENT
6	04/29/2018 08:59	04/29/2018 09:45	0.77	Operational	Rig Up					RIG UP ALL GROUND FITTINGS AND EQUIPMENT
7	04/29/2018 09:51	04/29/2018 12:15	2.40	Operational	Other (See comment)					WAIT ON RIG TO RUN CASING
8	04/29/2018 12:15	04/29/2018 12:25	0.17	Operational	Rig Up					RIG UP FLOOR

EVENT LOG

Service Line Cementing
Client LARAMIE ENERGY
District Rifle, CO



9	04/29/2018 12:25	04/29/2018 12:45	0.33	Operational	Safety Meeting					BJ CREW, CUSTOMER REPRESENTATIVE AND RIG CREW DISCUSS JOB PROCEDURES AND SAFETY CONCERNS SUCH AS MUSTER POINT, FIRE EXT, FIRST AID, RED ZONES, PRESSURE ON IRON, PINCH POINTS ETC
10	04/29/2018 12:50	04/29/2018 12:53	0.05	Operational	Pump Spacer	8.3300	2.00	5.00	176.00	DROP BOTTOM PLUG AND FILL LINES WITH 5 BBLS WATER AHEAD
11	04/29/2018 12:53	04/29/2018 12:56	0.05	Operational	Pressure Test					PRESSURE TEST LINES TO 3,000 PSI
12	04/29/2018 12:56	04/29/2018 13:03	0.12	Operational	Pump Spacer	8.3300	5.00	35.00	190.00	PUMP REMAINING 35 BBLS WATER SPACER AHEAD
13	04/29/2018 13:03	04/29/2018 13:23	0.33	Operational	Pump Lead Cement	12.0000	5.00	76.60	220.00	MIX AND PUMP 170 SKS BJCEM S100 LEAD CEMENT AT 12 PPG, 2.53 YLD, 14.89 GAL/SK (TOTAL OF 76.6 BBLS CEMENT SLURRY)
14	04/29/2018 13:23	04/29/2018 13:31	0.13	Operational	Pump Tail Cement	12.5000	5.00	42.50	258.00	MIX AND PUMP 107 SKS BJCEM S100 TAIL CEMENT AT 12.5 PPG, 2.23 YLD, 12.62 GAL/SK (TOTAL OF 42.5 BBLS CEMENT SLURRY)
15	04/29/2018 13:31	04/29/2018 13:32	0.02	Operational	Other (See comment)					SHUTDOWN
16	04/29/2018 13:33	04/29/2018 13:34	0.02	Operational	Drop Top Plug					DROP TOP PLUG
17	04/29/2018 13:34	04/29/2018 13:44	0.17	Operational	Pump Displacement	8.3300	10.00	82.00	579.00	PUMP 82 BBLS FRESH WATER DISPLACEMENT
18	04/29/2018 13:44	04/29/2018 13:46	0.03	Operational	Pump Displacement	8.3300	4.00	10.40	630.00	SLOW RATE AND PUMP REMAINING 10.4 BBLS WATER DISPLACEMENT
19	04/29/2018 13:46	04/29/2018 13:47	0.02	Operational	Land Plug				448.00	LAND PLUG AND BUMP TO 1600 PSI, FINAL CIRCULATING PRESSURE WAS
20	04/29/2018 13:47	04/29/2018 13:57	0.17	Operational	Pressure Test				1,685.00	PRESSURE TEST CASING FOR 10 MINUTES AT 1685 PSI
21	04/29/2018 13:57	04/29/2018 13:58	0.02	Operational	Check Floats					CHECK FLOATS
22	04/29/2018 13:58	04/29/2018 13:59	0.02	Operational	Other (See comment)					FLOATS HELD WITH BBLS BACK TO PUMP, BBLS CEMENT TO SURFACE

EVENT LOG

Service Line Cementing
Client LARAMIE ENERGY
District Rifle, CO



23	04/29/2018 14:00	04/29/2018 14:40	0.67	Operational	Rig Down					BJ CREW RIG DOWN ALL FITTINGS AND EQUIPMENT
24	04/29/2018 15:01	04/29/2018 15:01	0.00	Mobilization	Leave Location					BJ CREW DEPART LOCATION FOR FACILITY
25	04/29/2018 15:02	04/29/2018 15:03	0.02	Operational	Other (See comment)					PLUG LANDED AT 448 AND BUMPED TO 1685 FOR 10 MINUTE CASING TEST, FLOATS HELD WITH 1.5 BBLS BACK TO TRUCK. 32 BBLS CEMENT TO SURFACE.

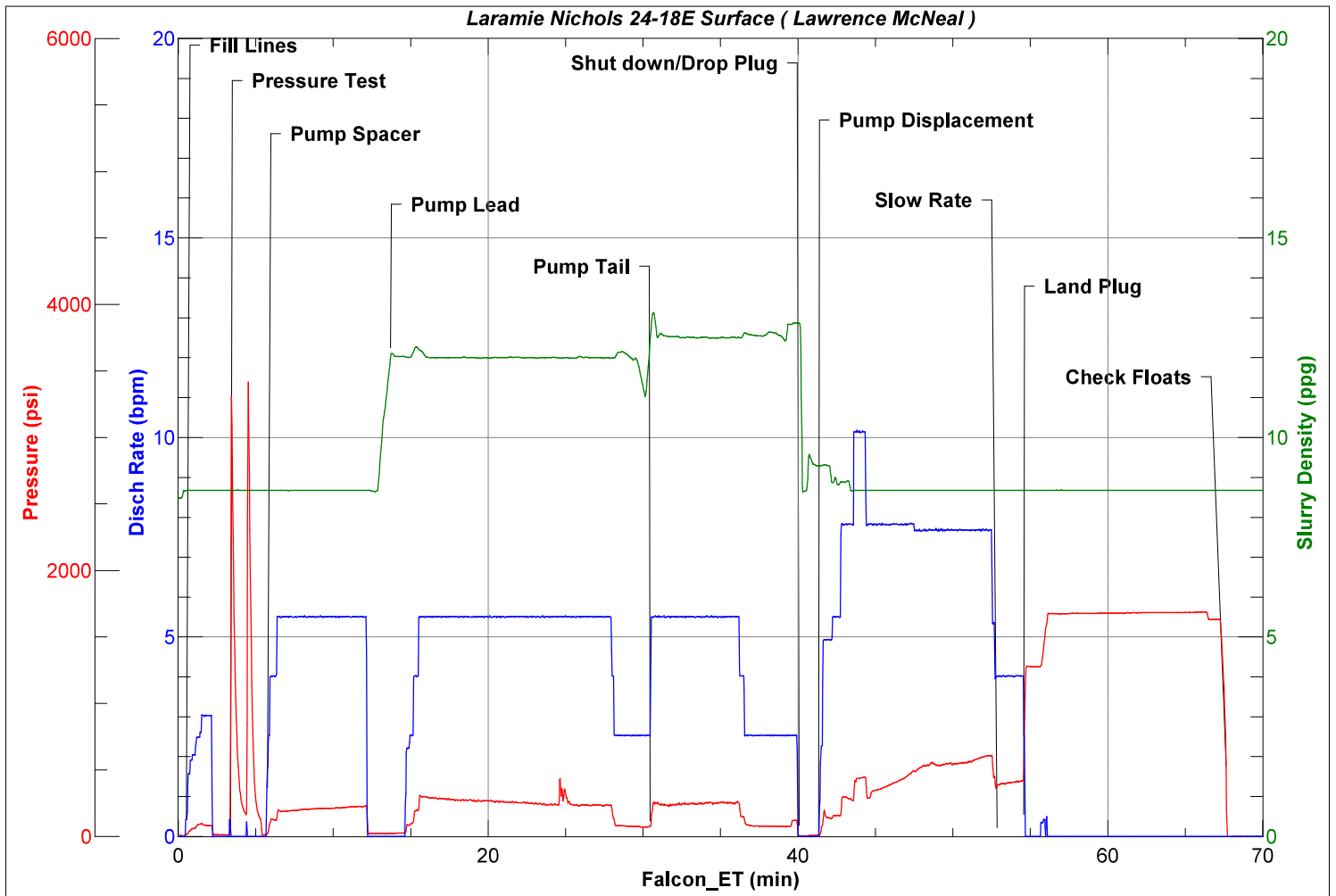


JobMaster Program Version 4.02C1

Job Number: 5041

Customer: Laramie

Well Name: Nichols 0994-24-18E



Cementing Treatment



Start Date	5/2/2018	Well	Nichols Federal 0994-24-18E
End Date	5/3/2018	County	MESA
Client	LARAMIE ENERGY	State/Province	CO
Client Field Rep	Roger Foster	API	05-077-10386
Service Supervisor	Andrew Linn	Formation	-
Field Ticket No.	Production	Rig	H&P 290
District	Rifle, CO	Type of Job	Long String

WELL GEOMETRY

Type	ID (in)	OD (in)	Wt. (lb/ft)	MD (ft)	Excess(%)	Grade	Thread
Previous Casing	8.02	8.63	28.00	1,530.00		J-55	ST&C
Open Hole	8.88			7,979.00	3.50		
Casing	4.00	4.50	11.60	7,969.00		L-80	LT&C
Open Hole	8.88			5,958.00	3.50		

Shoe Length (ft): 84

HARDWARE

Bottom Plug Used?	Yes	Tool Type	Float Collar
Bottom Plug Provided By	Non BJ	Tool Depth (ft)	7,886.00
Bottom Plug Size	4.500	Max Tubing Pressure - Rated (psi)	-
Top Plug Used?	Yes	Max Tubing Pressure - Operated (psi)	-
Top Plug Provided By	Non BJ	Max Casing Pressure - Rated (psi)	4,960.00
Top Plug Size	4.500	Max Casing Pressure - Operated (psi)	3,968.00
Centralizers Used	Yes	Pipe Movement	None
Centralizers Quantity	107.00	Job Pumped Through	Manifold
Centralizers Type	Bow	Top Connection Thread	8 rnd.
Landing Collar Depth (ft)	7,969	Top Connection Size	4.5

Cementing Treatment



CIRCULATION PRIOR TO JOB

Well Circulated By	Rig	Solids Present at End of Circulation	No
Circulation Prior to Job	Yes	10 sec SGS	9.00
Circulation Time (min)	150.00	10 min SGS	55.00
Circulation Rate (bpm)	10.00	30 min SGS	98.00
Circulation Volume (bbls)	1,500.00	Flare Prior to/during the Cement Job	No
Lost Circulation Prior to Cement Job	No	Gas Present	No
Mud Density In (ppg)	9.20	Gas Units	0
Mud Density Out (ppg)	-		
PV Mud In	12		
PV Mud Out	-		
YP Mud In	14		
YP Mud Out	-		

TEMPERATURE

Ambient Temperature (°F)	39.00	Slurry Cement Temperature (°F)	52.60
Mix Water Temperature (°F)	48.40	Flow Line Temperature (°F)	115.00

BJ FLUID DETAILS

Fluid Type	Fluid Name	Density (ppg)	Yield (Cu Ft/sk)	H2O Req. (gals/sk)	Planned Top of Fluid (Ft)	Length (Ft)	Vol (sk)	Vol (Cu Ft)	Vol (bbls)
Spacer / Pre Flush / Flush	IntegraGuard EZ Spacer	11.00			0.00				60.00
Lead Slurry	BJCem P100.3.01R	12.70	1.9849	11.10	1,030.00	4,928.00	801	1,583.00	281.90
Tail Slurry	BJCem P70.6.01R	13.50	1.8561	9.31	5,958.00	2,051.00	369	685.00	121.90
Displacement Final	Water + ResCare +Biocide	8.33			0.00			0.00	123.20

Cementing Treatment



Fluid Type	Fluid Name	Component	Concentration	UOM
Spacer / Pre Flush / Flush	IntegraGuard EZ Spacer	RETARDER, R-7C	0.3000	PPB
Spacer / Pre Flush / Flush	IntegraGuard EZ Spacer	GELLANT WATER, GW-86	0.8000	PPB
Spacer / Pre Flush / Flush	IntegraGuard EZ Spacer	SAND, S-8, Silica Flour, 200 Mesh	168.8967	PPB
Spacer / Pre Flush / Flush	IntegraGuard EZ Spacer	EXTENDER, BENTONITE	10.0000	PPB
Spacer / Pre Flush / Flush	IntegraGuard EZ Spacer	RETARDER, R-3	1.4000	PPB
Lead Slurry	BJCem P100.3.01R	CEMENT, ASTM TYPE III	100.0000	PCT
Lead Slurry	BJCem P100.3.01R	IntegraSeal PHENO	0.5000	LBS/SK
Lead Slurry	BJCem P100.3.01R	RETARDER, R-3	0.5000	BWOB
Lead Slurry	BJCem P100.3.01R	DISPERSANT, CD-31	0.1000	BWOB
Lead Slurry	BJCem P100.3.01R	BONDING AGENT, BA-60	0.3000	BWOB
Lead Slurry	BJCem P100.3.01R	GELLANT WATER, GW-86	0.1000	BWOB
Lead Slurry	BJCem P100.3.01R	Foam Preventer, FP-25	0.3000	BWOB
Lead Slurry	BJCem P100.3.01R	IntegraSeal CELLO	0.2500	LBS/SK
Tail Slurry	BJCem P70.6.01R	CEMENT, CLASS G	70.0000	PCT
Tail Slurry	BJCem P70.6.01R	Flyash (Rockies)	20.0000	PCT
Tail Slurry	BJCem P70.6.01R	EXTENDER, BENTONITE	6.0000	BWOB
Tail Slurry	BJCem P70.6.01R	BONDING AGENT, BA-90	10.0000	PCT
Tail Slurry	BJCem P70.6.01R	IntegraSeal CELLO	0.2500	LBS/SK
Tail Slurry	BJCem P70.6.01R	IntegraSeal PHENO	0.5000	LBS/SK
Tail Slurry	BJCem P70.6.01R	FLUID LOSS, FL-24	0.4000	BWOB
Tail Slurry	BJCem P70.6.01R	SAND, S-8, Silica Flour, 200 Mesh	25.0000	BWOB
Tail Slurry	BJCem P70.6.01R	BONDING AGENT, BA-60	0.2000	BWOB
Tail Slurry	BJCem P70.6.01R	Foam Preventer, FP-25	0.3000	BWOB
Tail Slurry	BJCem P70.6.01R	RETARDER, R-3	0.2000	BWOB
Displacement Final	Water + ResCare +Biocide	CLAY STABILIZER ResCare CS	0.0800	GPB

Cementing Treatment



TREATMENT SUMMARY

Time	Fluid	Rate (bpm)	Fluid Vol. (bbls)	Pipe Pressure (psi)
5/3/2018 9:38 PM	IntegraGuard EZ Spacer	3.50	60.00	436.00
5/3/2018 10:08 PM	BJCem P100.3.01R	5.00	282.46	351.00
5/3/2018 11:10 PM	BJCem P70.6.01R	5.00	122.24	546.00
5/3/2018 11:45 PM	Water + ResCare +Biocide	11.00	122.22	1,927.00

	Min	Max	Avg
Pressure (psi)	169.00	2,684.00	358.00
Rate (bpm)	2.00	11.00	5.00

DISPLACEMENT AND END OF JOB SUMMARY

Displaced By	BJ	Amount of Cement Returned/Reversed	10.00
Calculated Displacement Volume (bbls)	122.22	Method Used to Verify Returns	Visual
Actual Displacement Volume (bbls)	122.00	Amount of Spacer to Surface	60.00
Did Float Hold?	Yes	Pressure Left on Casing (psi)	0.00
Bump Plug	Yes	Amount Bled Back After Job	1.00
Bump Plug Pressure (psi)	2,684.00	Total Volume Pumped (bbls)	644.00
Were Returns Planned at Surface	Yes	Top Out Cement Spotted	No
Cement returns During Job	Full	Lost Circulation During Cement Job	No

Customer Name LARAMIE
 Well Name NICHOLS FED. 24-18E
 Job Type Long String

District Rifle
 Supervisor ANDREW LINN
 Engineer GAGE PUTNAM



Seq No.	Start Date	Start Time	Event	Density (lb/gal)	Pump Rate (bpm)	Pump Vol (bbls)	Pipe Pressure (psi)	Comments
1	5/2/2018	8:30	CALL OUT					CALL OUT. ON LOCATION TIME OF 17:00
2	5/2/2018	11:20	STEACS					PRE CONVOY SAFETY MEETING
3	5/2/2018	11:35	DEPART RIFLE YARD					DEPART FROM RIFLE YARD FOR H&P 290
4	5/2/2018	13:25	ARRIVE ON LOCATION					ARRIVE ON LOCATION. RIG WAS RUNNING CASING
5	5/2/2018	13:30	SITE ASSESSMENT					CREW DID A SITE ASSESSMENT
6	5/2/2018	13:38	SPOT EQUIPMENT					SPOTTED IN EQUIPMENT
7	5/2/2018	13:49	STEACS					PRE RIG UP SAFETY MEETING WITH ALL BJ CEMENT CREW
8	5/2/2018	14:00	RIG UP					RIG UP ALL GROUND EQUIPMENT
9	5/2/2018	21:05	SAFETY MEETING					PRE JOB SAFETY MEETING WITH RIG CREW AND ALL BJ CEMENT CREW
10	5/2/2018	21:15	RIG UP					LOAD BOTH PLUGS IN PLUG CONTAINER, STAB PLUG CONTAINER, HOOK LINES TO PLUG CONTAINER.
11	5/2/2018	21:26	FILL LINES	8.33	2	5	426	FILL LINES WITH 5 BBLS. OF FRESH WATER
12	5/2/2018	21:30	PRESSURE TEST				5770	PRESSURE TEST TO 5770 PSI.
13	5/2/2018	21:33	DROP PLUG					DROP BOTTOM PLUG
14	5/2/2018	21:38	WEIGHTED SPACER	11	3.5	10	436	11 PPG. WEIGHTED SPACER.
15	5/2/2018	21:53	WEIGHTED SPACER	11	3.5	50	169	11 PPG WEIGHTED SPACER
16	5/2/2018	22:05	WEIGHTED SPACER	11	3.5	95	220	FINISHED PUMPING 11 PPG. WEIGHTED SPACER WITH 95 BBLS AWAY.
17	5/2/2018	22:08	LEAD CEMENT	12.7	5	10	351	LEAD CEMENT 12.7 PPG 872 SKS 1.98 CUFT/SK 11.1 GAL/SK FOR A TOTAL OF 282.46 BBLS OF LEAD CEMENT, REQUIRING 211.69 BBLS. OF WATER. WEIGHT VERIFIED WITH MUD SCALE. CALCULATED TOP OF LEAD IS 0 FT WITH A HEIGHT OF 4989.94 FT.
18	5/2/2018	22:15	LEAD CEMENT	12.7	5	50	370	PUMPED LEAD CEMENT
19	5/2/2018	22:26	LEAD CEMENT	12.7	5	100	352	PUMPED LEAD CEMENT
20	5/2/2018	22:35	LEAD CEMENT	12.7	5	150	346	PUMPED LEAD CEMENT
21	5/2/2018	22:46	LEAD CEMENT	12.7	5	200	354	PUMPED LEAD CEMENT
22	5/2/2018	22:56	LEAD CEMENT	12.7	5	250	358	PUMPED LEAD CEMENT
23	5/2/2018	22:58	LEAD CEMENT	12.7	4	270	239	PUMPED LEAD CEMENT
24	5/2/2018	23:05	LEAD CEMENT	12.7	4	295	270	FINISHED PUMPING LEAD CEMENT WITH 295 BBLS. AWAY.
25	5/2/2018	23:10	TAIL CEMENT	13.5	5	10	546	TAIL CEMENT 13.5 PPG. 369 SKS 1.86 CUFT/SK 9.31 GAL/SK FOR A TOTAL OF 122.24 BBLS OF TAIL CEMENT, REQUIRING 81.8 BBLS OF WATER. WEIGHT VERIFIED WITH MUD SCALE. CALCULATED TOP OF TAIL IS 4989.94 FT. WITH A HEIGHT OF 2979.06 FT.
26	5/2/2018	23:16	TAIL CEMENT	13.5	5	50	360	PUMPED TAIL CEMENT
27	5/2/2018	23:27	TAIL CEMENT	13.5	4	100	271	PUMPED TAIL CEMENT
28	5/2/2018	23:36	TAIL CEMENT	13.5	4	132	230	FINISHED PUMPING TAIL CEMENT WITH 126 BBLS. AWAY.
29	5/2/2018	23:36	SHUT DOWN					SHUT DOWN
30	5/2/2018	23:37	WASH PUMPS AND LINES					WASH PUMPS AND LINES TO CELLAR
31	5/2/2018	23:42	DROP PLUG					DROP TOP PLUG VERIFIED BY COMPANY MAN
32	5/2/2018	23:45	DISPLACEMENT	8.33	11	10	1927	FRESH WATER DISPLACEMENT WITH 10 GALS OF RESCARE AND 5 GALS OF BIOCID
33	5/2/2018	23:50	DISPLACEMENT	8.33	9	50	2075	FRESH WATER DISPLACEMENT WITH 10 GALS. OF RESCARE
34	5/2/2018	23:50	SPACER TO SURFACE					60 BBLS OF WEIGHTED SPACER TO SURFACE
35	5/2/2018	23:55	DISPLACEMENT	8.33	8	100	2557	FRESH WATER DISPLACEMENT WITH 10 GALS. OF RESCARE
36	5/2/2018	23:57	DISPLACEMENT	8.33	8	112	2703	FRESH WATER DISPLACEMENT WITH 10 GALS. OF RESCARE.
37	5/2/2018	23:57	CEMENT TO SURFACE					10 BBLS. OF CEMENT TO SURFACE
38	5/2/2018	23:59	DISPLACEMENT	8.33	4	113	2146	FRESH WATER DISPLACEMENT WITH 10 GALS. OF RESCARE
39	5/3/2018	0:00	DISPLACEMENT	8.33	4	122	2684	FRESH WATER DISPLACEMENT WITH 10 GALS. OF RESCARE
40	5/3/2018	0:00	LAND PLUG				2684	LANDED THE PLUG FINAL CIRCULATING PRESSURE WAS 2684 PSI.
41	5/3/2018	0:00	CASING TEST				3009	TOOK TO 3009 PSI.
42	5/3/2018	0:11	CHECK FLOATS					10 MIN CASING TEST AT 3009 PSI.
43	5/3/2018	0:20	SAFETY MEETING					CHECK FLOATS, FLOATS HELD 2 BBLS. BACK.
44	5/3/2018	0:28	RIG DOWN					PRE RIG DOWN SAFETY MEETING WITH RIG CREW
45	5/3/2018	0:28	WASH PUMPS AND LINES					RIG DOWN RIG FLOOR
46	5/3/2018	0:40	SAFETY MEETING					WASH PUMPS AND LINES TO CELLAR
47	5/3/2018	0:49	RIG DOWN					PRE RIG DOWN SAFETY MEETING WITH ALL BJ SERVICES CEMENT CREW
48	5/3/2018	1:25	AAR					RIG DOWN ALL EQUIPMENT.
49	5/3/2018	1:30	STEACS					AFTER ACTION REVIEW
50	5/3/2018	1:45	DEPART FROM LOCATION					PRE CONVOY SAFETY MEETING
								DEPART FROM LOCATION FOR RIFLE YARD. THANK YOU FOR USING BJ SERVICES, ANDREW LINN AND CREW.



JobMaster Program Version 4.02C1

Job Number: 5152

Customer: LARAMIE

Well Name: NICHOLS FED. 24-18E

