

Extraction Oil & Gas
Project: Weld County, CO (NAD83)
Site: Berthoud Farms Pad KB 29
Well: Berthoud Fams 8E-10-1N
Wellbore: Wellbore #1
Plan: Plan #1 (Berthoud Fams 8E-10-1N/Wellbore #1)

WELL DETAILS: Berthoud Fams 8E-10-1N
Ground Elevation:: 5033.00
RKB Elevation: KB=29 @ 5062.00ft
Rig Name:

Northing 1361362.99 Easting 3128263.97 Latitude 40.324429 Longitude -105.039975



PROJECT DETAILS: Weld County, CO (NAD83)
Geodetic System: US State Plane 1983
Datum: North American Datum 1983
Ellipsoid: GRS 1980
Zone: Colorado Northern Zone
System Datum: Ground Level
Local North: True

T

↑

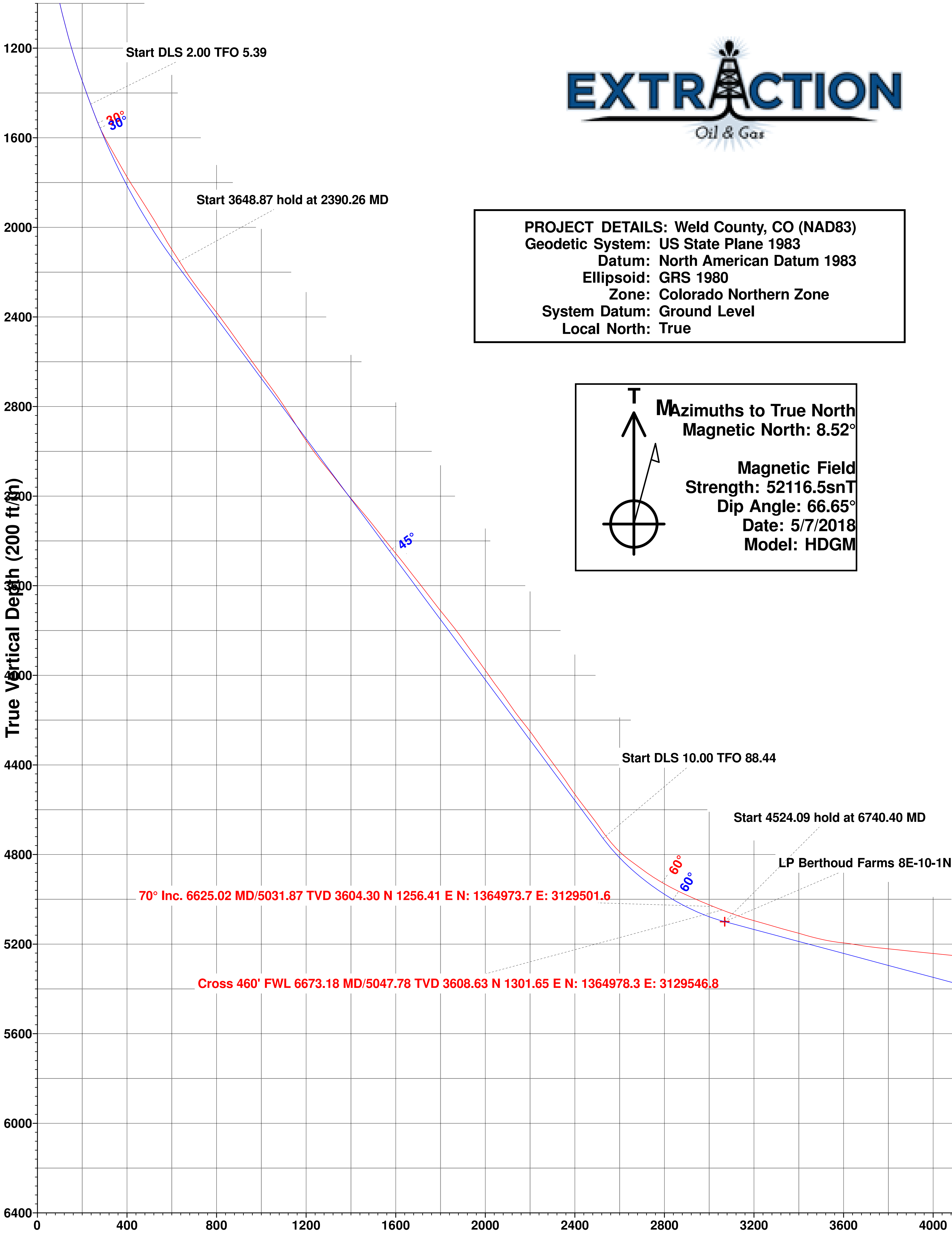
M

↗

↻

Mazimuths to True North
Magnetic North: 8.52°

Magnetic Field
Strength: 52116.5snT
Dip Angle: 66.65°
Date: 5/7/2018
Model: HDGM



Vertical Section at 56.99° (200 ft/in)

Planned Section Details

| Sec | MD | Inc | Azi | TVD | +N/-S | +E/-W | Dleg | TFace | VSect |
|-----|----------|-------|-------|---------|---------|---------|-------|-------|---------|
| 1 | 1504.00 | 27.60 | 12.08 | 1450.19 | 325.63 | 72.13 | 0.00 | 0.00 | 237.88 |
| 2 | 2390.26 | 45.27 | 14.39 | 2160.40 | 835.43 | 194.30 | 2.00 | 5.39 | 618.04 |
| 3 | 6039.13 | 45.27 | 14.39 | 4728.12 | 3346.63 | 838.41 | 0.00 | 0.00 | 2526.17 |
| 4 | 6740.40 | 77.23 | 88.95 | 5100.00 | 3630.55 | 1301.52 | 10.00 | 88.44 | 3069.20 |
| 5 | 11264.50 | 77.23 | 88.95 | 6100.00 | 3711.13 | 5712.98 | 0.00 | 0.00 | 6812.53 |

