



Laramie Energy

End of Well Cement Report

Nichols 0994-24-17W 05-077-10388

S:24 T:9S R:94W Mesa CO

Quote #: 09124/09136

| Execution #: 05934/06049



Laramie Energy

Attention: Mr. Aaron Duncan | (303) 339-4913 | aduncan@laramie-energy.com

Laramie Energy | 1401 17th St, Suite 1400 | Denver, CO 80202

Dear Mr. Duncan,

Thank you for the opportunity to provide cementing services on this well. BJ Services strives to achieve complete customer satisfaction. If you have any questions regarding the services or data provided, please contact BJ Services at any time.

Sincerely,

Gage Putnam
Field Engineer I | (307) 887-4243 | Gage.Putnam@BJServices.com

Field Office 28730 US-6, Rifle, CO 81650
Phone: (970) 632-2412

Sales Office 999 18th St. Suite 1200 Denver, CO 80202
Phone: (281) 408-2361

Cementing Treatment



Start Date	4/21/2018	Well	Nichols 0994-24-17W
End Date	4/21/2018	County	MESA
Client	LARAMIE ENERGY	State/Province	CO
Client Field Rep	Matt Settles	API	05-077-10388
Service Supervisor	Jerod Dent	Formation	
Field Ticket No.	Surface	Rig	H&P 290
District	Rifle, CO	Type of Job	Surface

WELL GEOMETRY

Type	ID (in)	OD (in)	Wt. (lb/ft)	MD (ft)	Excess(%)	Grade	Thread
Previous Casing	15.25	16.00	65.00	60.00	0.00		
Open Hole	11.00			1,030.00	48.00		
Open Hole	11.00			1,547.00	75.00		
Casing	8.02	8.63	28.00	1,536.00		J-55	ST&C

Shoe Length (ft): 40

HARDWARE

Bottom Plug Used?	No	Tool Type	Float Collar
Top Plug Used?	Yes	Tool Depth (ft)	1,490.50
Top Plug Provided By	Non BJ	Max Casing Pressure - Rated (psi)	2,530.00
Top Plug Size	8.625	Max Casing Pressure - Operated (psi)	2,020.00
Centralizers Used	Yes	Pipe Movement	None
Centralizers Quantity	18.00	Job Pumped Through	Manifold
Centralizers Type	Bow	Top Connection Thread	8 RD
Landing Collar Depth (ft)	1,490	Top Connection Size	8.625

Cementing Treatment



CIRCULATION PRIOR TO JOB

Well Circulated By	Rig	Solids Present at End of Circulation	No
Circulation Prior to Job	Yes	10 sec SGS	13.00
Circulation Time (min)	30.00	10 min SGS	21.00
Circulation Rate (bpm)	10.00	30 min SGS	34.00
Circulation Volume (bbls)	300.00	Flare Prior to/during the Cement Job	No
Lost Circulation Prior to Cement Job	No	Gas Present	No
Mud Density In (ppg)	9.30	Gas Units	
Mud Density Out (ppg)	9.30		
PV Mud In	12		
YP Mud In	15		

TEMPERATURE

Ambient Temperature (°F)	42.00	Slurry Cement Temperature (°F)	67.00
Mix Water Temperature (°F)	64.00	Flow Line Temperature (°F)	93.00

BJ FLUID DETAILS

Fluid Type	Fluid Name	Density (ppg)	Yield (Cu Ft/sk)	H2O Req. (gals/sk)	Planned Top of Fluid (Ft)	Length (Ft)	Vol (sk)	Vol (Cu Ft)	Vol (bbls)
Spacer / Pre Flush / Flush	Fresh Water	8.3300			0.00				40.0000
Lead Slurry	BJCem S100.3.01D	12.0000	2.5329	14.89	0.00	1,030.00	170	417.0000	74.2000
Tail Slurry	BJCem S100.3.01D	12.5000	2.2282	12.62	1,030.00	500.00	107	237.0000	42.1000
Displacement Final	Water	8.3300			0.00			0.0000	93.0000

Cementing Treatment



Fluid Type	Fluid Name	Component	Concentration	UOM
Lead Slurry	BJCem S100.3.01D	CEMENT EXTENDER,SODIUM METASILICATE A-2 ANHYDROUS	2.0000	LBS/SK
Lead Slurry	BJCem S100.3.01D	CEMENT, ASTM TYPE III	100.0000	PCT
Lead Slurry	BJCem S100.3.01D	CEMENT EXTENDER, GYPSUM, A-10	5.0000	BWOB
Lead Slurry	BJCem S100.3.01D	ACCELERATOR, SALT, CHLORIDE, CALCIUM, A-7P, PELLETS	2.0000	LBS/SK
Lead Slurry	BJCem S100.3.01D	IntegraSeal CELLO	0.1300	LBS/SK
Lead Slurry	BJCem S100.3.01D	Foam Preventer, FP-25	0.3000	BWOB
Tail Slurry	BJCem S100.3.01D	ACCELERATOR, SALT, CHLORIDE, CALCIUM, A-7P, PELLETS	2.0000	LBS/SK
Tail Slurry	BJCem S100.3.01D	CEMENT EXTENDER, GYPSUM, A-10	5.0000	BWOB
Tail Slurry	BJCem S100.3.01D	CEMENT EXTENDER,SODIUM METASILICATE A-2 ANHYDROUS	2.0000	LBS/SK
Tail Slurry	BJCem S100.3.01D	CEMENT, ASTM TYPE III	100.0000	PCT
Tail Slurry	BJCem S100.3.01D	IntegraSeal CELLO	0.1300	LBS/SK
Tail Slurry	BJCem S100.3.01D	Foam Preventer, FP-25	0.3000	BWOB

TREATMENT SUMMARY

Time	Fluid	Rate (bpm)	Fluid Vol. (bbls)	Pipe Pressure (psi)	Annulus Pressure (psi)	Comments
	Fresh Water	0.00	40.00			
	BJCem S100.3.01D	0.00	74.20			
	BJCem S100.3.01D	0.00	42.10			
	Water	0.00	93.00			

	Min	Max	Avg
Pressure (psi)	84.00	1,600.00	450.00
Rate (bpm)	0.50	8.00	6.00

Cementing Treatment



DISPLACEMENT AND END OF JOB SUMMARY

Displaced By	BJ	Amount of Cement Returned/Reversed	35.00
Calculated Displacement Volume (bbls)	90.80	Method Used to Verify Returns	Visual
Actual Displacement Volume (bbls)	92.00	Amount of Spacer to Surface	40.00
Did Float Hold?	Yes	Pressure Left on Casing (psi)	
Bump Plug	Yes	Amount Bled Back After Job	0.50
Bump Plug Pressure (psi)	510.00	Total Volume Pumped (bbls)	252.00
Were Returns Planned at Surface	Yes	Top Out Cement Spotted	No
Cement returns During Job	Full	Lost Circulation During Cement Job	No

EVENT LOG

Service Line Cementing
Client LARAMIE ENERGY
District Rifle, CO



Well: Nichols 24-17W **Quotes:** H8V2Z1QUO-09124-H8V2Z1
Job Type: Surface **Plans:** ORD-05934-MOD2Z8
Supervisor: Jerod Dent **Executions:** MOD2Z802EXC-05934-MOD2Z802
Engineer: Zen Keith

Seq.	Start Dt./Time	End Dt./Time	Duration	Category	Event	Equipment	Density (ppg)	Pump Rate (bpm)	Pump Vol(bbls)	Pipe Pressure(psi)	Comments
1	04/21/2018 05:00	04/21/2018 05:01	0.02	Mobilization	Callout						CREW CALLED OUT TO LARAMIE NICHOLS 24-17W SURFACE
2	04/21/2018 05:01	04/21/2018 06:00	0.98	Mobilization	Leave Location						CREW DEPART FACILITY FOR LARAMIE NICHOLS 24-17W SURFACE
3	04/21/2018 07:15	04/21/2018 07:16	0.02	Mobilization	Arrive on Location						CREW ARRIVE AT LARAMIE NICHOLS 24-17W SURFACE
4	04/21/2018 07:16	04/21/2018 08:00	0.73	Operational	Rig Up						CREW RIG UP FOR SURFACE CEMENT JOB
5	04/21/2018 08:01	04/21/2018 08:34	0.55	Operational	Other (See comment)						CREW WAIT ON RIG TO RUN CASING
6	04/21/2018 09:30	04/21/2018 09:45	0.25	Operational	Other (See comment)						8.625", 32 LB, J-55 CASING SET AT 1,536' ON BOTTOM AT 09:30 HRS, CIRCULATING AT 10 BBLs/MIN, WITH 400 PSI FOR A TOTAL OF 300 BBLs
7	04/21/2018 09:45	04/21/2018 09:55	0.17	Operational	Safety Meeting						BJ CREW, CUSTOMER REPRESENTATIVE AND RIG PERSONNEL CONDUCT A SAFETY MEETING DISCUSSING JOB PROCEDURES, RED ZONES,

EVENT LOG

Service Line Cementing
Client LARAMIE ENERGY
District Rifle, CO



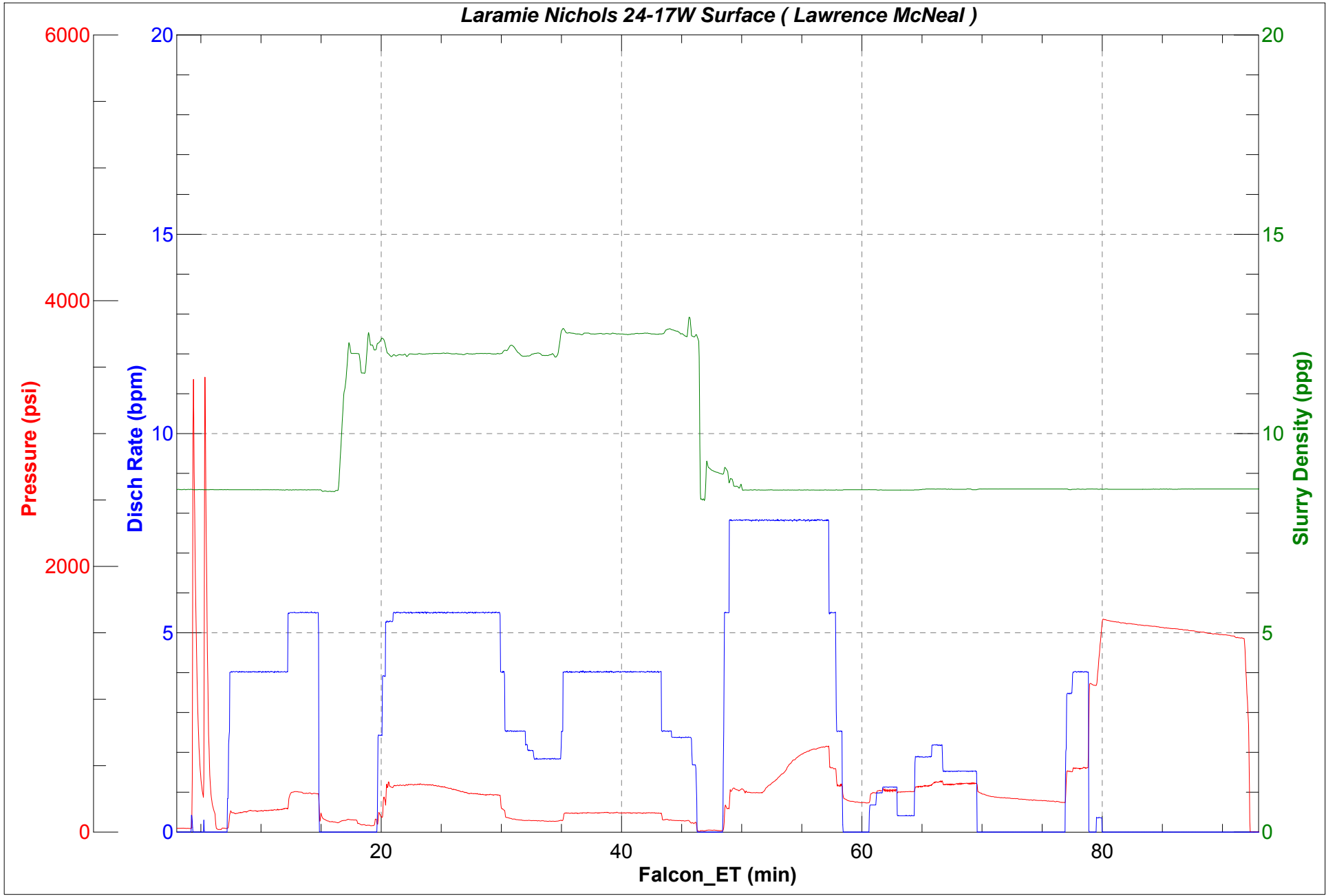
											HAZARDS ON RIG FLOOR, PRESSURE, MUSTER POINTS, EMERGENCY #'S ETC
8	04/21/2018 10:03	04/21/2018 10:06	0.05	Operational	Start Pumping		8.3300	2.00	5.00		FILL LINES WITH 5 BBLS WATER AHEAD
9	04/21/2018 10:06	04/21/2018 10:07	0.02	Operational	Other (See comment)						SHUTDOWN
10	04/21/2018 10:07	04/21/2018 10:08	0.02	Operational	Pressure Test						PRESSURE TEST LINES TO 3,000 PSI
11	04/21/2018 10:10	04/21/2018 10:18	0.13	Operational	Pump Spacer		8.3300	5.00	35.00	302.00	PUMP REMAINING 35 BBLS FRESH WATER SPACER AHEAD
12	04/21/2018 10:18	04/21/2018 10:32	0.23	Operational	Pump Lead Cement		12.0000	5.00	50.00	281.00	MIX AND PUMP LEAD CEMENT
13	04/21/2018 10:32	04/21/2018 10:38	0.10	Operational	Pump Lead Cement		12.0000	5.00	26.60	260.00	50 BBLS AWAY, PUMP REMAINING 26.6 BBLS LEAD
14	04/21/2018 10:38	04/21/2018 10:39	0.02	Operational	Pump Lead Cement		12.0000	5.00	76.60	245.00	PUMPED 76.6 TOTAL BBLS OF LEAD CEMENT (170 SKS BJCEM S-100 LEAD CEMENT AT 12 PPG, 2.53 YLD, 14.89 GAL/SK)
15	04/21/2018 10:39	04/21/2018 10:49	0.17	Operational	Pump Tail Cement		12.5000	5.00	42.50	142.00	PUMPED 42.5 TOTAL BBLS OF TAIL CEMENT (107 SKS BJCEM S-100 TAIL CEMENT AT 12.5 PPG, 2.23 YLD, 12.62 GAL/SK)
16	04/21/2018 10:49	04/21/2018 10:50	0.02	Operational	Other (See comment)						SHUTDOWN
17	04/21/2018 10:50	04/21/2018 10:52	0.03	Operational	Other (See comment)						DROP TOP PLUG
18	04/21/2018 10:53	04/21/2018 10:55	0.03	Operational	Pump Displacement		8.3300	8.00	70.00	325.00	PUMP FRESH WATER DISPLACEMENT
19	04/21/2018 10:55	04/21/2018 10:58	0.05	Operational	Other (See comment)						SHUTDOWN DUE TO LACK OF WATER/ SWAP TO RIG DAY TANK
20	04/21/2018 10:58	04/21/2018 11:10	0.20	Operational	Pump Displacement		8.3300	4.00	14.00	482.00	PUMP 14 BBLS WATER DISPLACEMENT

EVENT LOG

Service Line Cementing
Client LARAMIE ENERGY
District Rifle, CO



21	04/21/2018 11:10	04/21/2018 11:10	0.00	Operational	Pump Displacement						SHUTDOWN/RIG TANK EMPTY SWAP TO UPRIGHT AS TANKER TRUCK FILLING
22	04/21/2018 11:20	04/21/2018 11:22	0.03	Operational	Pump Displacement		8.3300	4.00	92.00	498.00	PUMP REMAINING 8 BBLS WATER DISPLACEMENT
23	04/21/2018 11:22	04/21/2018 11:23	0.02	Operational	Land Plug					510.00	LAND PLUG
24	04/21/2018 11:22	04/21/2018 11:22	0.00	Operational	Check Floats						FLOATS HELD WITH .5 BBL BACK TO PUMP
25	04/21/2018 11:22		0.00	Operational	Other (See comment)						35 BBLS CEMENT TO SURFACE / EST TOP OF TAIL 659.4'.
26	04/21/2018 11:23	04/21/2018 11:33	0.17	Operational	Pressure Test					1,600.00	CASING TEST TO 1600 PSI / HOLD FOR 10 MINUTES



Cementing Treatment



Start Date	4/24/2018	Well	Nichols 0994-24-17W
End Date	4/24/2018	County	MESA
Client	LARAMIE ENERGY	State/Province	CO
Client Field Rep	Roger Foster	API	05-077-10388
Service Supervisor	Wendell Youngberg	Formation	-
Field Ticket No.	Production	Rig	H&P 290
District	Rifle, CO	Type of Job	Long String

WELL GEOMETRY

Type	ID (in)	OD (in)	Wt. (lb/ft)	MD (ft)	Excess(%)	Grade	Thread
Previous Casing	8.10	8.63	24.00	1,530.00		J-55	ST&C
Open Hole	8.88			5,752.00	3.50		
Open Hole	8.88			7,800.00	3.50		
Casing	4.00	4.50	11.60	7,789.00		L-80	LT&C

Shoe Length (ft): 82

HARDWARE

Bottom Plug Used?	No	Tool Type	Float Collar
Bottom Plug Provided By	-	Tool Depth (ft)	7,707.00
Bottom Plug Size	-	Max Tubing Pressure - Rated (psi)	-
Top Plug Used?	Yes	Max Tubing Pressure - Operated (psi)	-
Top Plug Provided By	Non BJ	Max Casing Pressure - Rated (psi)	8,852.00
Top Plug Size	4.500	Max Casing Pressure - Operated (psi)	4,000.00
Centralizers Used	Yes	Pipe Movement	None
Centralizers Quantity	115.00	Job Pumped Through	No Manifold
Centralizers Type	Bow	Top Connection Thread	8 round
Landing Collar Depth (ft)	7,789	Top Connection Size	4.5

Cementing Treatment



CIRCULATION PRIOR TO JOB

Well Circulated By	Rig	Solids Present at End of Circulation	No
Circulation Prior to Job	Yes	10 sec SGS	21.00
Circulation Time (min)	60.00	10 min SGS	59.00
Circulation Rate (bpm)	10.00	30 min SGS	118.00
Circulation Volume (bbls)	600.00	Flare Prior to/during the Cement Job	No
Lost Circulation Prior to Cement Job	No	Gas Present	No
Mud Density In (ppg)	10.20	Gas Units	0
Mud Density Out (ppg)	-		
PV Mud In	28		
PV Mud Out	-		
YP Mud In	25		
YP Mud Out	-		

TEMPERATURE

Ambient Temperature (°F)	45.00	Slurry Cement Temperature (°F)	54.00
Mix Water Temperature (°F)	42.00	Flow Line Temperature (°F)	120.00

BJ FLUID DETAILS

Fluid Type	Fluid Name	Density (ppg)	Yield (Cu Ft/sk)	H2O Req. (gals/sk)	Planned Top of Fluid (Ft)	Length (Ft)	Vol (sk)	Vol (Cu Ft)	Vol (bbls)
Spacer / Pre Flush / Flush	IntegraGuard EZ Spacer	11.00			0.00				60.00
Lead Slurry	BJCem P100.3.01R	12.70	1.9849	11.10	1,030.00	4,722.00	767	1,519.00	270.40
Tail Slurry	BJCem P70.6.01R	13.50	1.8561	9.31	5,752.00	2,051.00	369	685.00	121.90
Displacement Final	Water + ResCare +Biocide	8.33			0.00			0.00	120.00

Cementing Treatment



Fluid Type	Fluid Name	Component	Concentration	UOM
Spacer / Pre Flush / Flush	IntegraGuard EZ Spacer	SAND, S-8, Silica Flour, 200 Mesh	168.8967	PPB
Spacer / Pre Flush / Flush	IntegraGuard EZ Spacer	RETARDER, R-3	1.4000	PPB
Spacer / Pre Flush / Flush	IntegraGuard EZ Spacer	GELLANT WATER, GW-86	0.8000	PPB
Spacer / Pre Flush / Flush	IntegraGuard EZ Spacer	EXTENDER, BENTONITE	10.0000	PPB
Spacer / Pre Flush / Flush	IntegraGuard EZ Spacer	RETARDER, R-7C	0.3000	PPB
Lead Slurry	BJCem P100.3.01R	RETARDER, R-3	0.5000	BWOB
Lead Slurry	BJCem P100.3.01R	DISPERSANT, CD-31	0.1000	BWOB
Lead Slurry	BJCem P100.3.01R	IntegraSeal CELLO	0.2500	LBS/SK
Lead Slurry	BJCem P100.3.01R	CEMENT, ASTM TYPE III	100.0000	PCT
Lead Slurry	BJCem P100.3.01R	BONDING AGENT, BA-60	0.3000	BWOB
Lead Slurry	BJCem P100.3.01R	IntegraSeal PHENO	0.5000	LBS/SK
Lead Slurry	BJCem P100.3.01R	GELLANT WATER, GW-86	0.1000	BWOB
Lead Slurry	BJCem P100.3.01R	Foam Preventer, FP-25	0.3000	BWOB
Tail Slurry	BJCem P70.6.01R	IntegraSeal PHENO	0.5000	LBS/SK
Tail Slurry	BJCem P70.6.01R	Flyash (Rockies)	20.0000	PCT
Tail Slurry	BJCem P70.6.01R	EXTENDER, BENTONITE	6.0000	BWOB
Tail Slurry	BJCem P70.6.01R	BONDING AGENT, BA-60	0.2000	BWOB
Tail Slurry	BJCem P70.6.01R	BONDING AGENT, BA-90	10.0000	PCT
Tail Slurry	BJCem P70.6.01R	IntegraSeal CELLO	0.2500	LBS/SK
Tail Slurry	BJCem P70.6.01R	FLUID LOSS, FL-24	0.4000	BWOB
Tail Slurry	BJCem P70.6.01R	CEMENT, CLASS G	70.0000	PCT
Tail Slurry	BJCem P70.6.01R	SAND, S-8, Silica Flour, 200 Mesh	25.0000	BWOB
Tail Slurry	BJCem P70.6.01R	Foam Preventer, FP-25	0.3000	BWOB
Tail Slurry	BJCem P70.6.01R	RETARDER, R-3	0.2000	BWOB
Displacement Final	Water + ResCare +Biocide	CLAY STABILIZER ResCare CS	0.0800	GPB

Cementing Treatment



TREATMENT SUMMARY

Time	Fluid	Rate (bpm)	Fluid Vol. (bbls)	Pipe Pressure (psi)
4/24/2018 4:16 AM	IntegraGuard EZ Spacer	5.00	60.00	715.00
4/24/2018 4:39 AM	BJCem P100.3.01R	5.00	270.40	415.00
4/24/2018 5:40 AM	BJCem P70.6.01R	5.00	121.90	564.00
4/24/2018 6:08 AM	Water + ResCare +Biocide	10.00	120.00	2,315.00

	Min	Max	Avg
Pressure (psi)	415.00	2,315.00	1,002.25
Rate (bpm)	5.00	10.00	6.25

DISPLACEMENT AND END OF JOB SUMMARY

Displaced By	BJ	Amount of Cement Returned/Reversed	0.00
Calculated Displacement Volume (bbls)	120.00	Method Used to Verify Returns	Visual
Actual Displacement Volume (bbls)	120.00	Amount of Spacer to Surface	29.00
Did Float Hold?	Yes	Pressure Left on Casing (psi)	0.00
Bump Plug	Yes	Amount Bled Back After Job	1.00
Bump Plug Pressure (psi)	2,047.00	Total Volume Pumped (bbls)	120.00
Were Returns Planned at Surface	Yes	Top Out Cement Spotted	No
Cement returns During Job	Partial	Lost Circulation During Cement Job	Yes

EVENT LOG

Service Line Cementing
Client LARAMIE ENERGY
District Rifle, CO



Well: Nichols 0994-24-17W **Quotes:** QUO-09136-L7B3Z9
Job Type: Long String **Plans:** ORD-06049-W1Z9Z3
Supervisor: Wendell Youngberg **Executions:** EXC-06049-W1Z9Z302
Engineer: Zen Keith

Seq.	Start Dt./Time	End Dt./Time	Duration	Category	Event	Equipment	Density (ppg)	Pump Rate (bpm)	Pump Vol (bbls)	Pipe Pressure (psi)	Comments
1	04/23/2018 20:00	04/23/2018 21:10	1.17	Mobilization	Callout						Yard time of 20:00 with a RTS 02:00
2	04/23/2018 21:10	04/23/2018 21:25	0.25	Operational	Safety Meeting						BJ crew travel STEACS
3	04/23/2018 21:25	04/23/2018 23:30	2.08	Mobilization	Arrive on Location						BJ crew leave yard
4	04/23/2018 23:30	04/23/2018 23:45	0.25	Operational	Spot Units						BJ crew spot equipment
5	04/23/2018 23:45	04/23/2018 23:55	0.17	Operational	Safety Meeting						BJ Crew Rig Up STEACS
6	04/23/2018 23:55	04/24/2018 00:30	0.58	Operational	Rig Up						Rig up equipment
7	04/24/2018 00:30	04/24/2018 2:30	2.00	Standby	Other (See comment)						Standby Rig running casing

EVENT LOG

Service Line Cementing
Client LARAMIE ENERGY
District Rifle, CO



8	04/24/2018 2:30	04/24/2018 3:40	1.17	Operational	Rig Up						finish rigging up lines
9	04/24/2018 3:40	04/24/2018 4:06	0.43	Operational	Safety Meeting						STEACS meeting with rig about the job
10	04/24/2018 4:06	04/24/2018 4:12	0.10	Operational	Open Wellhead						stab head
11	04/24/2018 4:12	04/24/2018 4:16	0.07	Operational	Pressure Test						test lines to 5000
12	04/24/2018 4:16	04/24/2018 4:21	0.08	Operational	Pump Spacer				60.00		batch up 11# spacer
13	04/24/2018 4:21	04/24/2018 4:30	0.15	Operational	Pump Spacer			6.00		715.00	starting down hole with spacer
14	04/24/2018 4:30	04/24/2018 4:39	0.15	Operational	Pump Spacer			3.00		109.00	50 bbls gone 11# spacer
15	04/24/2018 4:39	04/24/2018 4:48	0.15	Operational	Pump Lead Cement			4.50	270.00	220.00	starting in to lead cement
16	04/24/2018 4:48	04/24/2018 4:56	0.13	Operational	Pump Lead Cement			6.00		415.00	50 bbls gone lead cement
17	04/24/2018 4:56	04/24/2018 5:05	0.15	Operational	Pump Lead Cement			6.00		419.00	100 bbls gone lead cement
18	04/24/2018 5:05	04/24/2018 5:14	0.15	Operational	Pump Lead Cement			6.00		436.00	150 bbls gone lead cement
19	04/24/2018 5:14	04/24/2018 5:23	0.15	Operational	Pump Lead Cement			6.00		437.00	200 bbls gone lead cement
20	04/24/2018 5:23	04/24/2018 5:29	0.10	Operational	Pump Lead Cement			4.50		262.00	250 bbls gone lead cement
21	04/24/2018 5:29	04/24/2018 5:29	0.00	Operational	Pump Lead Cement			4.50		262.00	250 bbls gone lead cement

EVENT LOG

Service Line Cementing
Client LARAMIE ENERGY
District Rifle, CO



22	04/24/2018 5:29	04/24/2018 5:40	0.18	Operational	Pump Tail Cement				121.00		starting in to tail cement
23	04/24/2018 5:40	04/24/2018 5:49	0.15	Operational	Pump Tail Cement			5.50		564.00	50 bbls gone tail cement
24	04/24/2018 5:49	04/24/2018 5:57	0.13	Operational	Pump Tail Cement			5.50		565.00	100 bbls gone tail cement
25	04/24/2018 5:57	04/24/2018 6:08	0.18	Operational	Close Wellhead						Shut down and start wash up lines
26	04/24/2018 6:08	04/24/2018 6:15	0.12	Operational	Pump Displacement				119.00		start pumping displacement
27	04/24/2018 6:15	04/24/2018 6:21	0.10	Operational	Pump Displacement			8.00		1,803.00	50 bbls gone displacement
28	04/24/2018 6:21	04/24/2018 6:27	0.10	Operational	Pump Displacement			8.00		1,960.00	100 bbls gone displacement
29	04/24/2018 6:27	04/24/2018 6:37	0.17	Operational	Pump Displacement			2.50		2,047.00	119 bbls gone displacement
30	04/24/2018 6:37	04/24/2018 6:45	0.13	Operational	Land Plug						Land plug FCP 2047 psi run up to 3000 casing test floats good 1 bbl back
31	04/24/2018 6:45	04/24/2018 6:50	0.08	Operational	Safety Meeting						rig down steacs
32	04/24/2018 6:50	04/24/2018 7:40	0.83	Operational	Rig Down						rig down equipment
33	04/24/2018 7:45	04/24/2018 7:55	0.17	Operational	Safety Meeting						travel steacs
34	04/24/2018 7:55	04/24/2018 8:00	0.08	Mobilization	Leave Location						leave location



JobMaster Program Version 4.02C1

Job Number: 4903

Customer: Laramie

Well Name: Nichols 24-17W

