



FILE NO: CH137652	COMPANY <b>LARAMIE ENERGY LLC</b>
API NO: 05077103880000	WELL <b>NICHOLS 0994-24-17W</b>
	FIELD <b>VEGA</b>
	COUNTY <b>MESA</b> STATE <b>COLORADO</b>

Ver. 4.10	LOCATION: SHL: 2301' FNL & 2782' FWL BHL: 1154' FSL & 1549' FWL SEC <u>24</u> TWP <u>9S</u> RGE <u>94W</u>	OTHER SERVICES RAL
-----------	---	-----------------------

PERMANENT DATUM LOG MEASURED FROM DRILL. MEAS. FROM	GL KB KB KB	ELEVATION 24 FT ABOVE P.D.	ELEVATIONS: KB 7236 FT DF GL 7212 FT
---	----------------------	----------------------------------	---

DATE	RUN	TRIP		
	1	1		
SERVICE ORDER	US137652			
DEPTH DRILLER	7707 FT			
DEPTH LOGGER	7639 FT			
BOTTOM LOGGED INTERVAL	7639 FT			
TOP LOGGED INTERVAL	2128 FT			
TIME STARTED	16:30			
TIME FINISHED	22:00			
OPERATOR RIG TIME	5.5 HOURS			
TYPE OF FLUID IN HOLE	WATER			
FLUID DENSITY	NA			
FLUID SALINITY	NA			
FLUID LEVEL	64 FT			
LOGGED CEMENT TOP	1695 FT			
WELLHEAD PRESSURE	0 PSI			
MAXIMUM HOLE DEVIATION	NA			
NOMINAL LOGGING SPEED	10 FMIN			
MAX. RECORDED TEMP.	224 DEGF			
REFERENCE LOG	BAKER HUGHES RAL			
REFERENCE LOG DATE	24-Jun-2018			
EQUIP. NO.	LOCATION	ML-4268	GRAND JCT.	
RECORDED BY	T. NEWELL			
WITNESSED BY	NA			

IN MAKING INTERPRETATIONS OF LOGS OUR EMPLOYEES WILL GIVE THE CUSTOMER THE BENEFIT OF THEIR BEST JUDGEMENT. BUT SINCE ALL INTERPRETATIONS ARE OPINIONS BASED ON INFERENCES FROM ELECTRICAL OR OTHER MEASUREMENTS, WE CANNOT, AND WE DO NOT GUARANTEE THE ACCURACY OR CORRECTNESS OF ANY INTERPRETATION. WE SHALL NOT BE LIABLE OR RESPONSIBLE FOR ANY LOSS, COST, DAMAGES, OR EXPENSES WHATSOEVER INCURRED OR SUSTAINED BY THE CUSTOMER RESULTING FROM ANY INTERPRETATION MADE BY ANY OF OUR EMPLOYEES.

### REMARKS

RUN 1 TRIP 1: 2 OPERATIONS RUN IN THE WELL

\*OPERATION 1: RAL/GR/CCL RUN CENTRALIZED\*

\*\*OPERATION 2: RPM/GR/CCL RUN IN PNC-3D MODE\*\*

SJ: 5886' - 5907'

SJ: 6772' - 6793'

### EQUIPMENT DATA

RUN	TRIP	TOOL	SERIES NO.	SERIAL NO.	POSITION
1	1	PCM	8250EA	11902197	FREE
1	1	TEL/CCL	8248ED	10407093	FREE
1	1	GR	2812LB	11621284	FREE
1	1	RPM	8281EA	10190985	FREE
1	1	RPM	8283PA	10068031	FREE
1	1	RPM	8281FA	10076673	FREE
1	1	TEMP	8255XXA	166341	FREE

# RPM MAIN PASS G-SAND

ECLIPS 7.0i ECLIPS General Release Rel 7.0i Thu Jun 08 20:36:10 CDT 2017

Patches: 4

Plotted: Mon Jul 2 23:58:13 2018

## PARAMETER AND FILTER SUMMARY REPORT

FILE: /dat1a/LARAMIE\_NICHOLS\_0994-24-17W/p354h03.prm  
LOGGING MODE: DEPTH DIRECTION: UP  
TOP DEPTH: 2090.684 ft BOTTOM DEPTH: 2749.352 ft

### SYMMETRIC FILTER

MEASUREMENT TYPE	PARAMETER	VALUE	UNITS	INTERVAL (ft)	
GR	FILTER ( )	medium (1)		TOP	BOTTOM

### RPM PROCESSING

MEASUREMENT TYPE	PARAMETER	VALUE	UNITS	INTERVAL (ft)	
PNC Parameters	BOREHOLE CONTENTS	FLUID		TOP	BOTTOM
	OPEN/CASED HOLE	CASED HOLE		"	"
	BOREHOLE SIZE	7.88	in	"	"
	LARGEST CASING OD	4.50	in	"	"
	MATRIX	SANDSTONE		"	"

## CURVE DESCRIPTION REPORT

CURVE NAME	CREATION DATE	CURVE DESCRIPTION
F1:CCL	N/A	CASING COLLAR LOCATOR
F1:GR2	N/A	GAMMA RAY 2
F1:ISS	N/A	INELASTIC SHORT SPACE COUNT RATE
F1:LS	N/A	LONG SPACE COUNT RATE
F1:RATO	N/A	SHORT/LONG SPACE COUNT RATE RATIO
F1:RICS	N/A	SHORT SPACE INELASTIC TO CAPTURE COUNT RATE RATIO (ISS/CSS)
F1:SGFC	N/A	BOREHOLE AND DIFFUSION CORRECTED SIGMA
F1:SS	N/A	SHORT SPACE COUNT RATE

## CURVE MEASURE POINT OFFSET

CURVE	OFFSET (ft)	CURVE	OFFSET (ft)	CURVE	OFFSET (ft)	CURVE	OFFSET (ft)
CCL	-25.00	ISS	-12.75	RATO	-12.75	SGFC	-12.75
GR2	-22.75	LS	-12.75	RICS	-12.75	SS	-12.75

Presentation : SysA:/dat1a/LARAMIE\_NICHOLS\_0994-24-17W/17W\_RPM\_GS.fvpdf [5"/100' Scale]  
Plot Interval : 2110 - 2740 Feet

Data File 1 : F1 : SysA:/dat1a/LARAMIE\_NICHOLS\_0994-24-17W/17W\_RPM\_GS.xtf  
Created On : N/A  
Company : LARAMIE ENERGY LLC  
Well : NICHOLS 0994\_24\_17W  
Field : VEGA  
File Interval : 2083.25 - 2763.25 Feet  
OCT : p354h

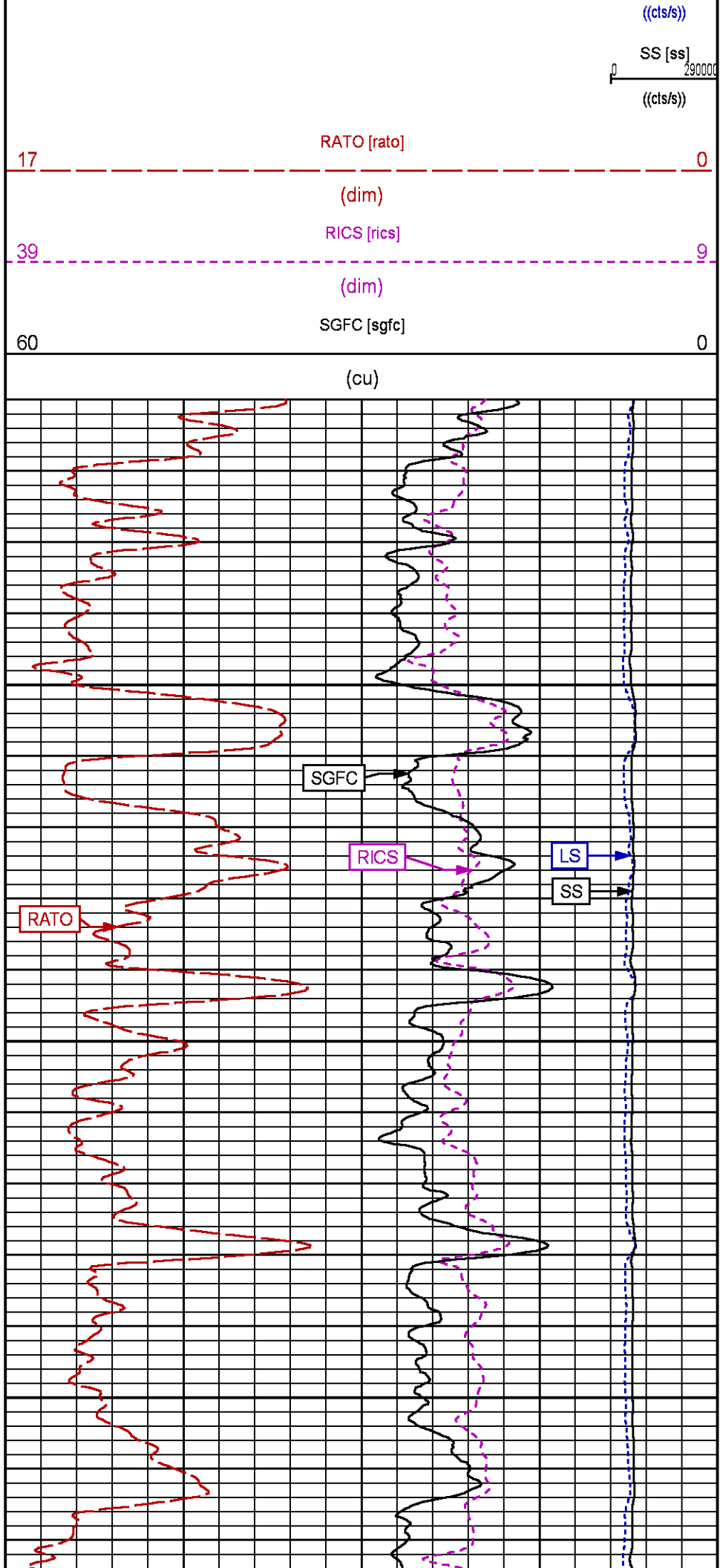
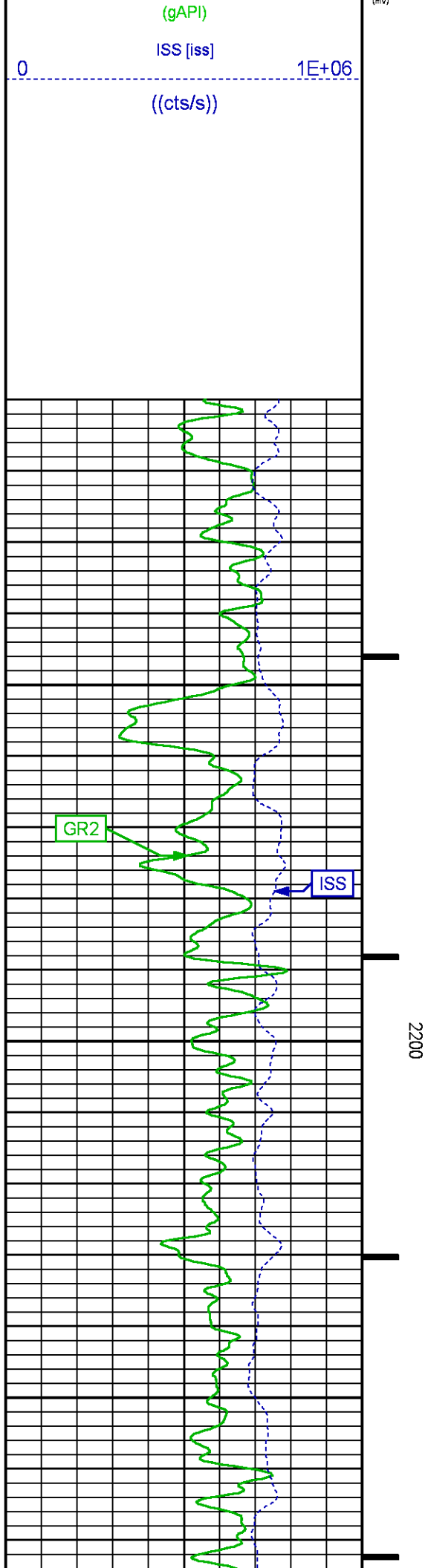
GR BACKUP

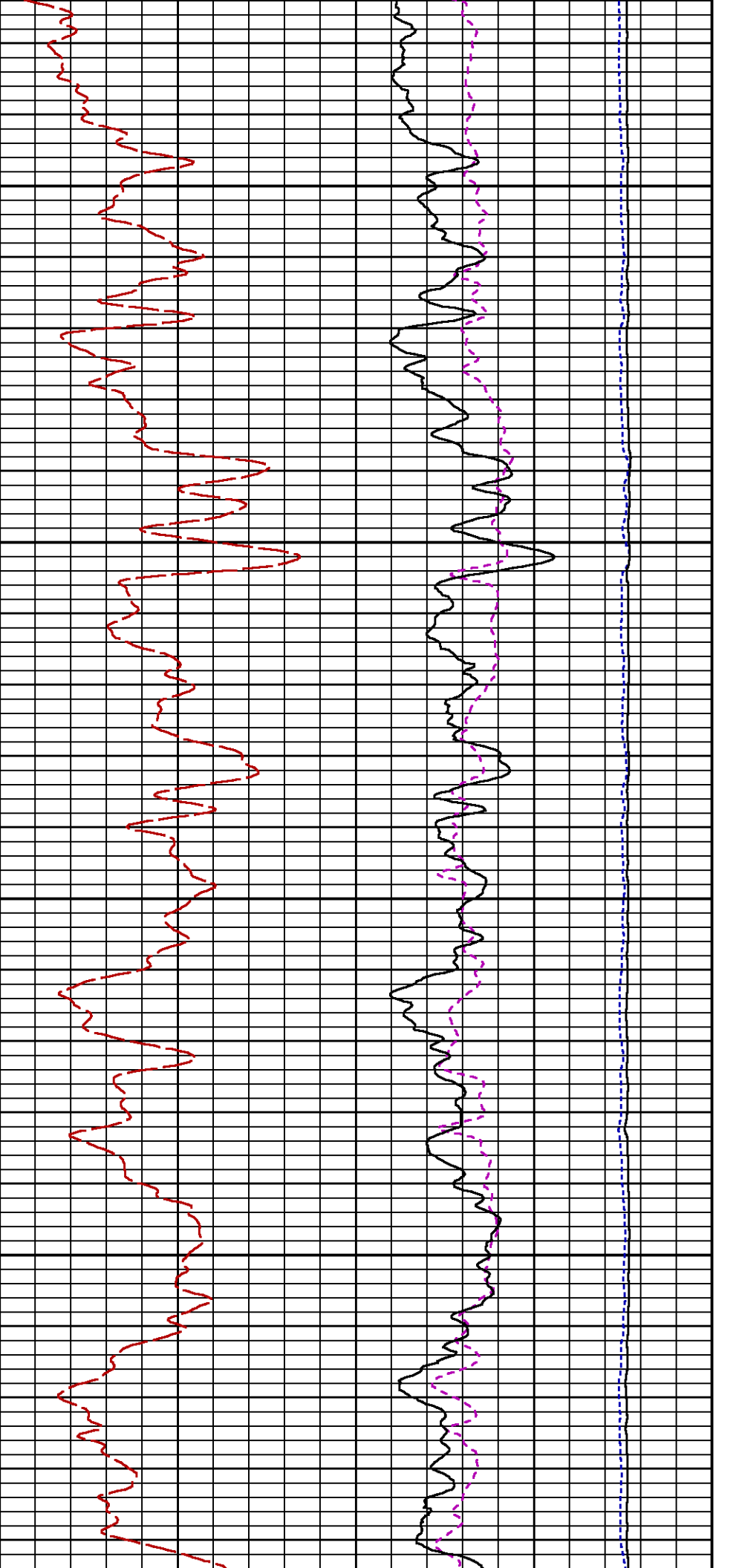
GAMMA RAY [gr2]

FEET

LS [ls]

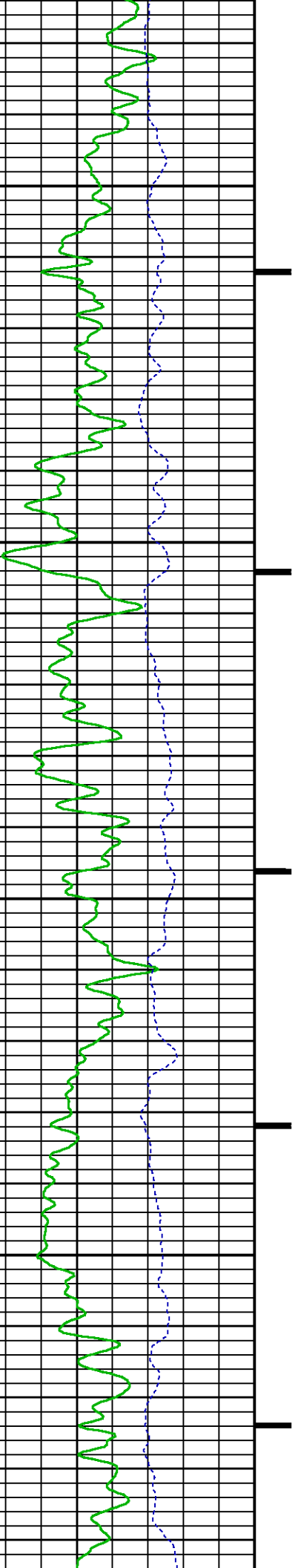
29000

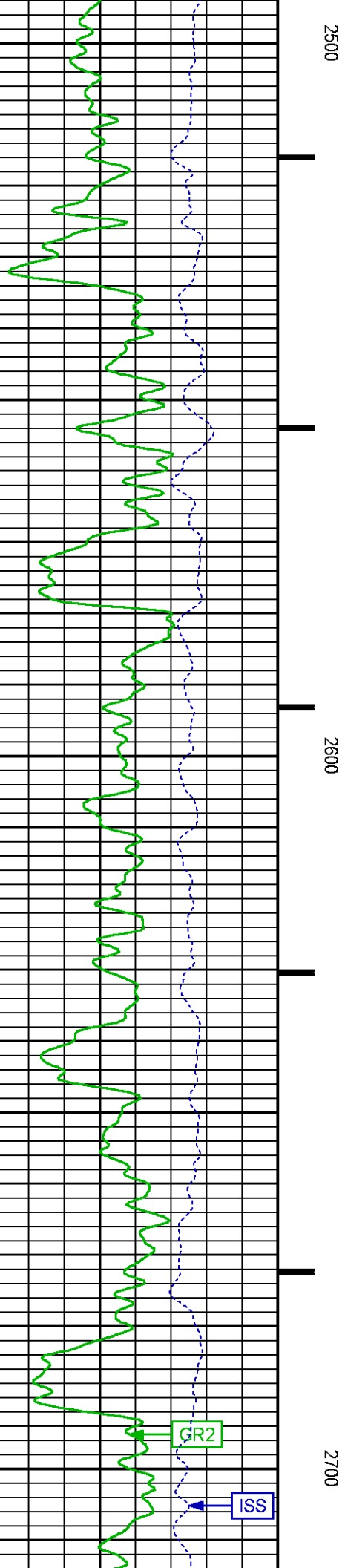
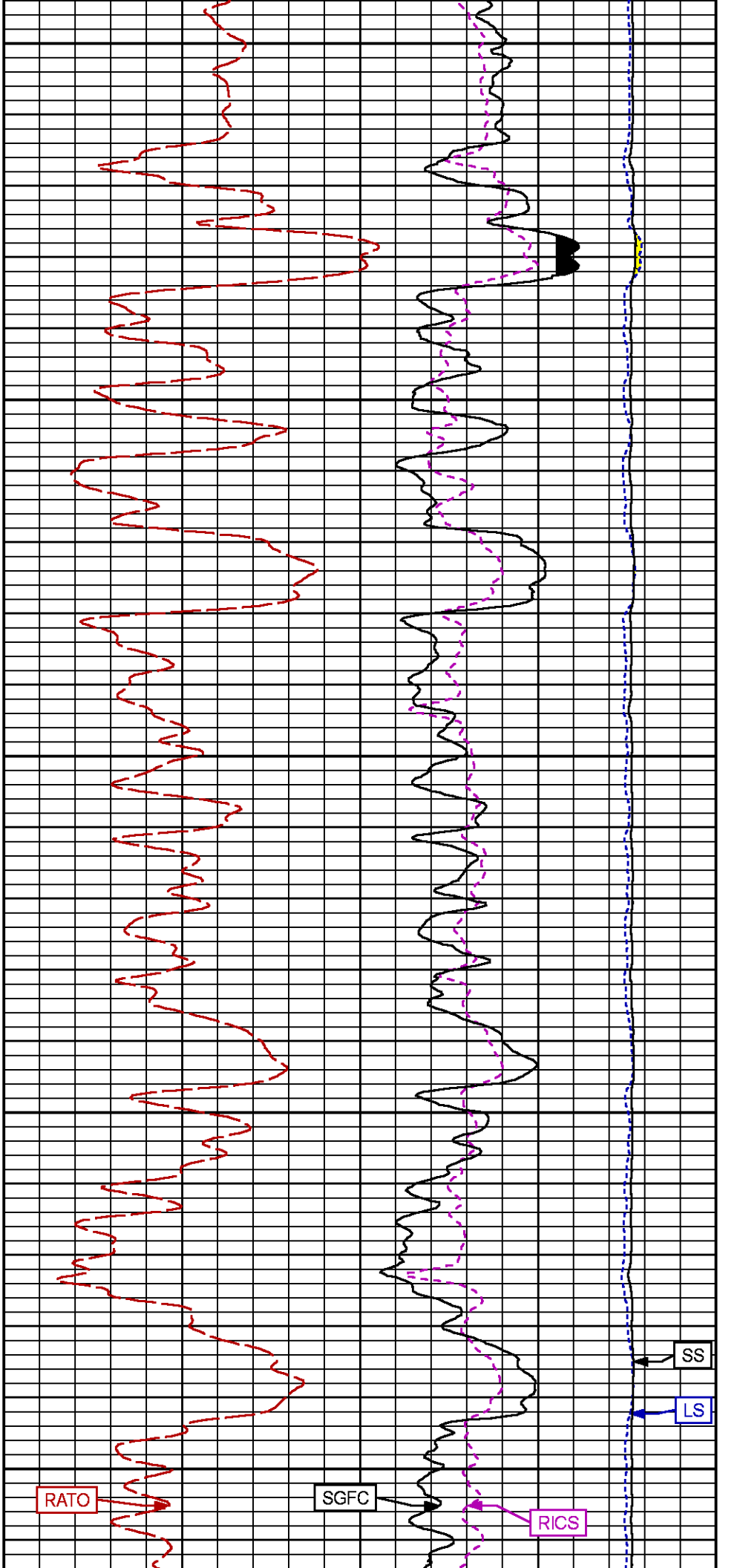


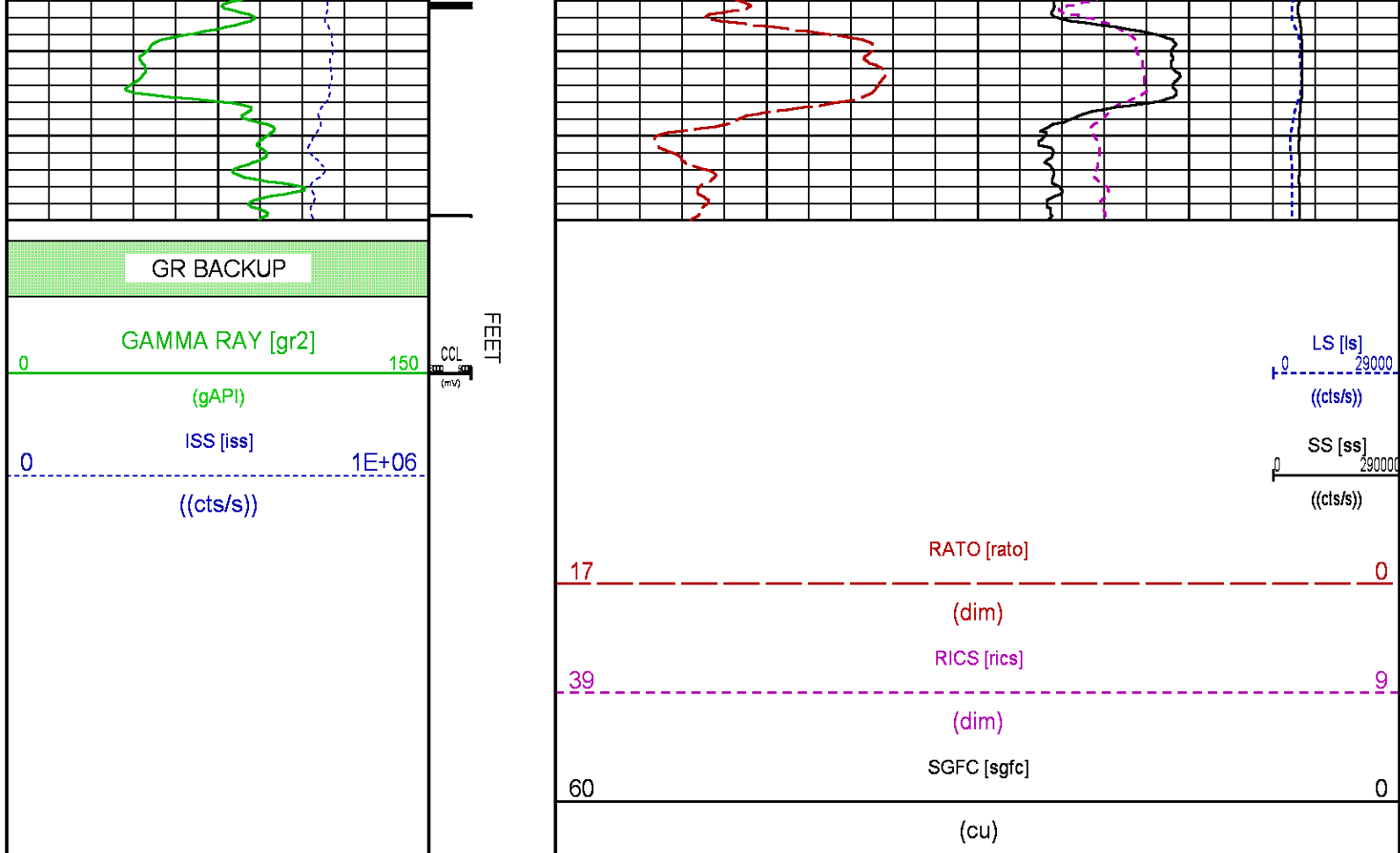


2300

2400







## RPM MAIN PASS WILLIAMS FORK

ECLIPS 7.0i ECLIPS General Release Rel 7.0i Thu Jun 08 20:36:10 CDT 2017

Patches: 4

Plotted: Mon Jul 2 23:59:14 2018

### PARAMETER AND FILTER SUMMARY REPORT

FILE: /dat1a/LARAMIE\_NICHOLS\_0994-24-17W/p354h02.prm  
 LOGGING MODE: DEPTH DIRECTION: UP  
 TOP DEPTH: 4299.474 ft BOTTOM DEPTH: 7633.366 ft

#### SYMMETRIC FILTER

MEASUREMENT TYPE	PARAMETER	VALUE	UNITS	INTERVAL (ft)
GR	FILTER ()	medium (1)		TOP BOTTOM

#### RPM PROCESSING

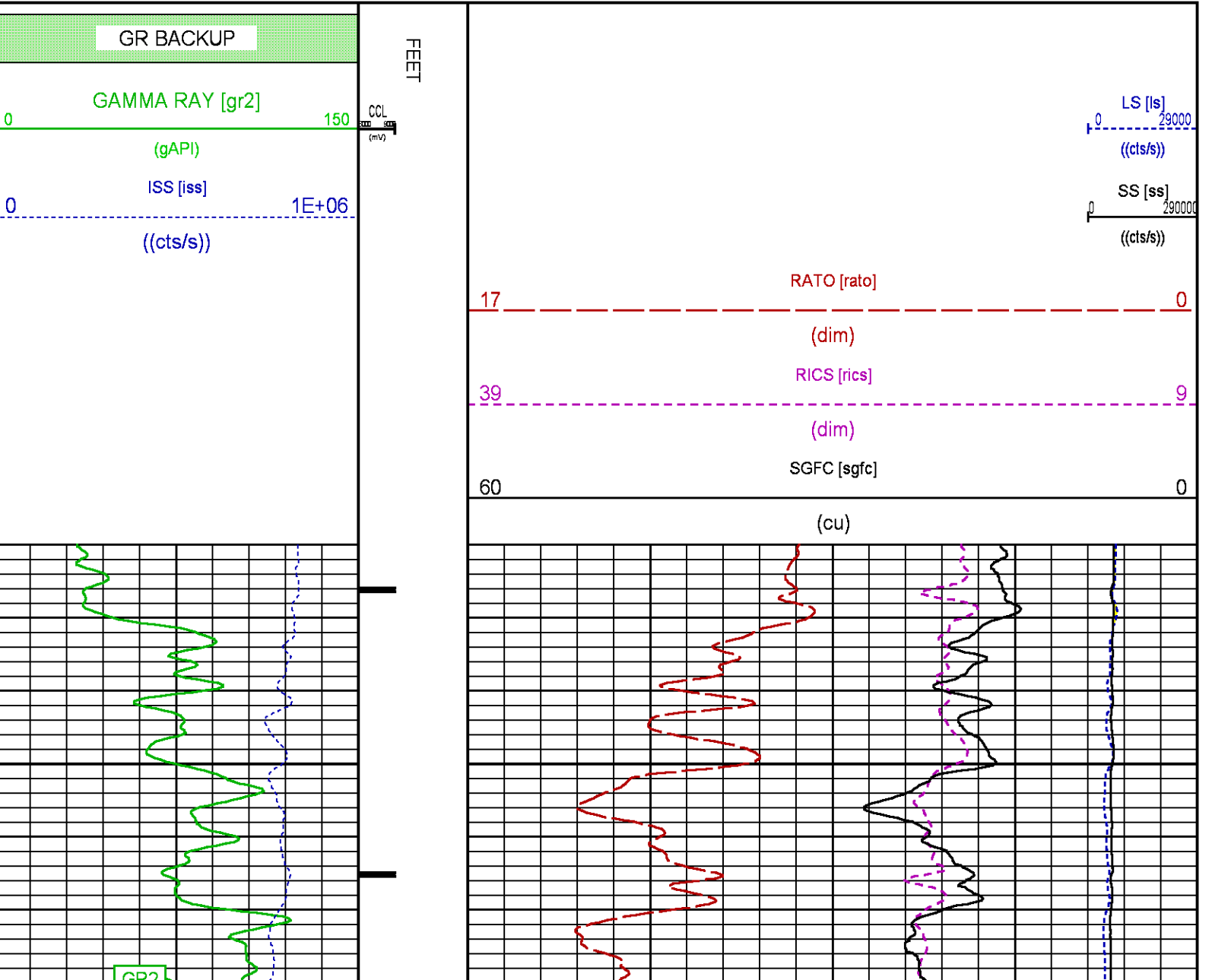
MEASUREMENT TYPE	PARAMETER	VALUE	UNITS	INTERVAL (ft)
PNC Parameters	BOREHOLE CONTENTS	FLUID		TOP BOTTOM
	OPEN/CASED HOLE	CASED HOLE		" "
	BOREHOLE SIZE	7.88	in	" "
	LARGEST CASING OD	4.50	in	" "
	MATRIX	SANDSTONE		" "

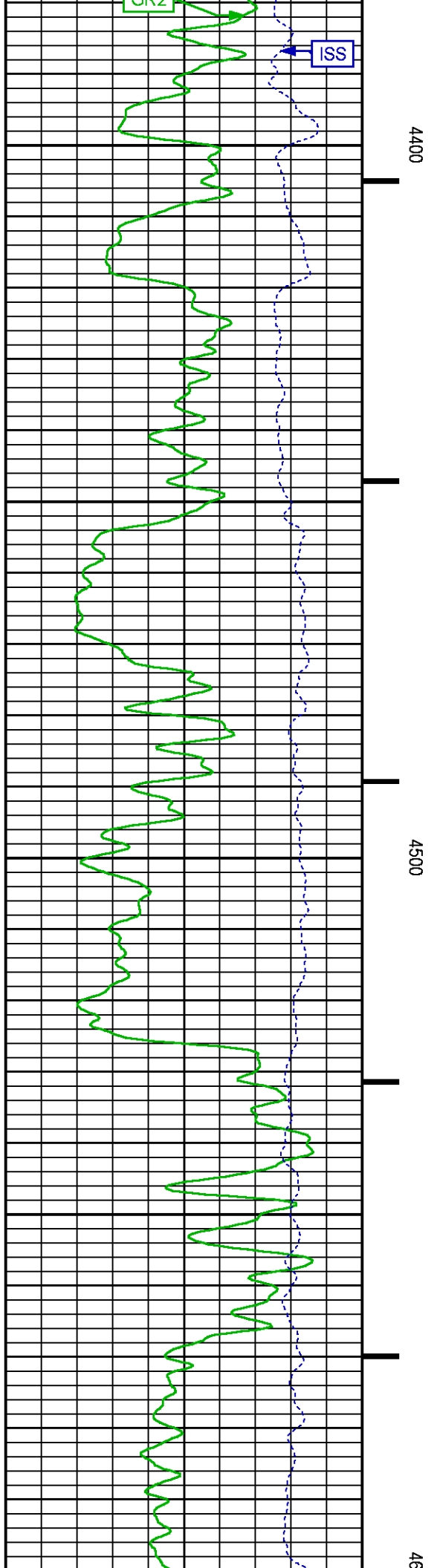
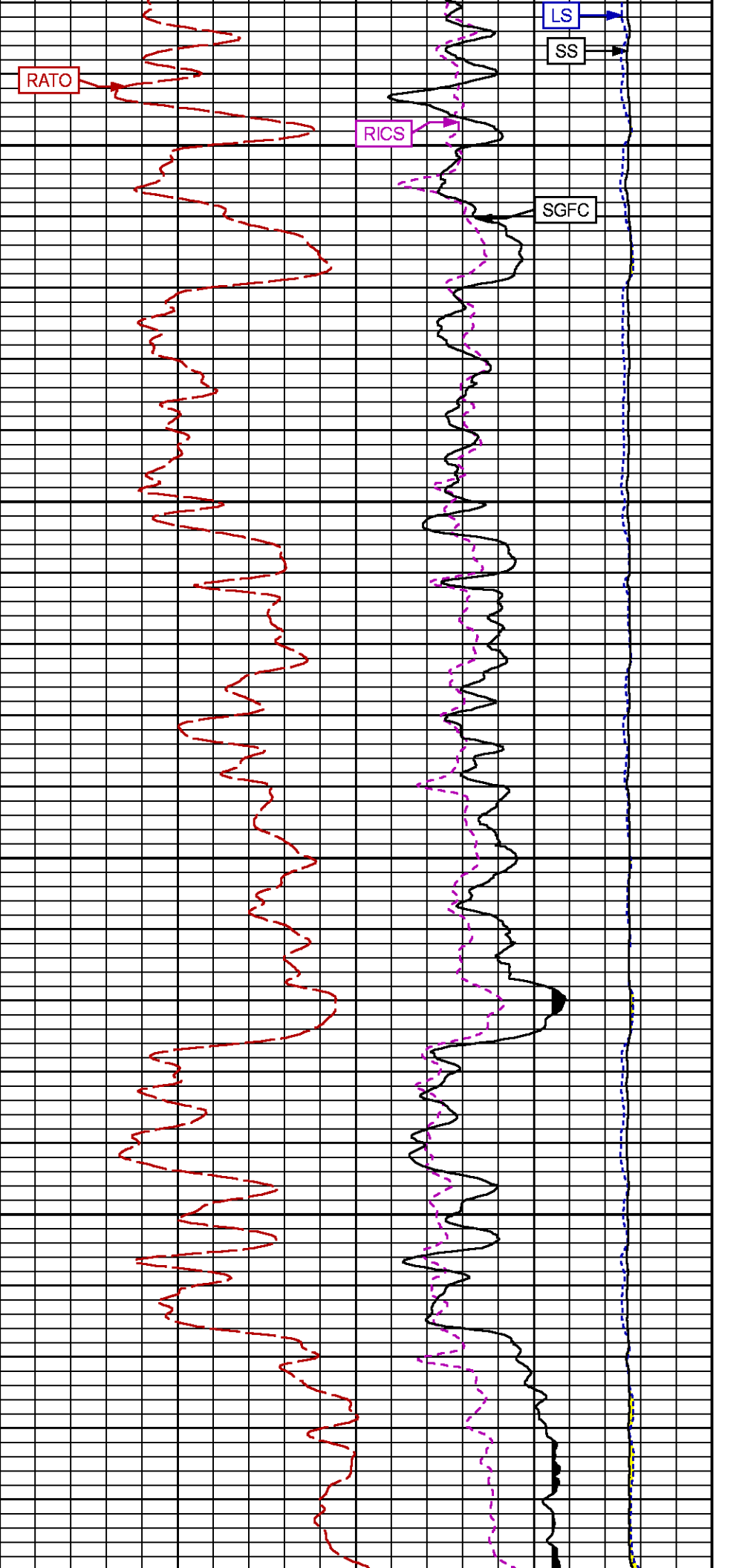
### CURVE DESCRIPTION REPORT

CURVE NAME	CREATION DATE	CURVE DESCRIPTION
F1:CCL	N/A	CASING COLLAR LOCATOR
F1:GR2	N/A	GAMMA RAY 2
F1:ISS	N/A	INELASTIC SHORT SPACE COUNT RATE
F1:LS	N/A	LONG SPACE COUNT RATE
F1:RATO	N/A	SHORT/LONG SPACE COUNT RATE RATIO
F1:RICS	N/A	SHORT SPACE INELASTIC TO CAPTURE COUNT RATE RATIO (ISS/CSS)
F1:SGFC	N/A	BOREHOLE AND DIFFUSION CORRECTED SIGMA
F1:SS	N/A	SHORT SPACE COUNT RATE

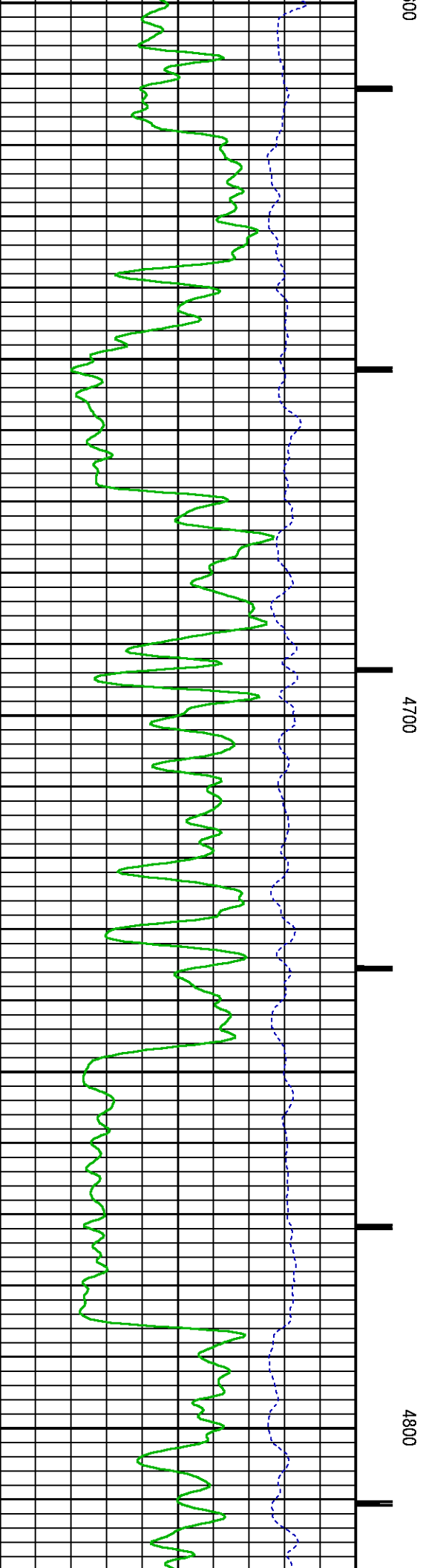
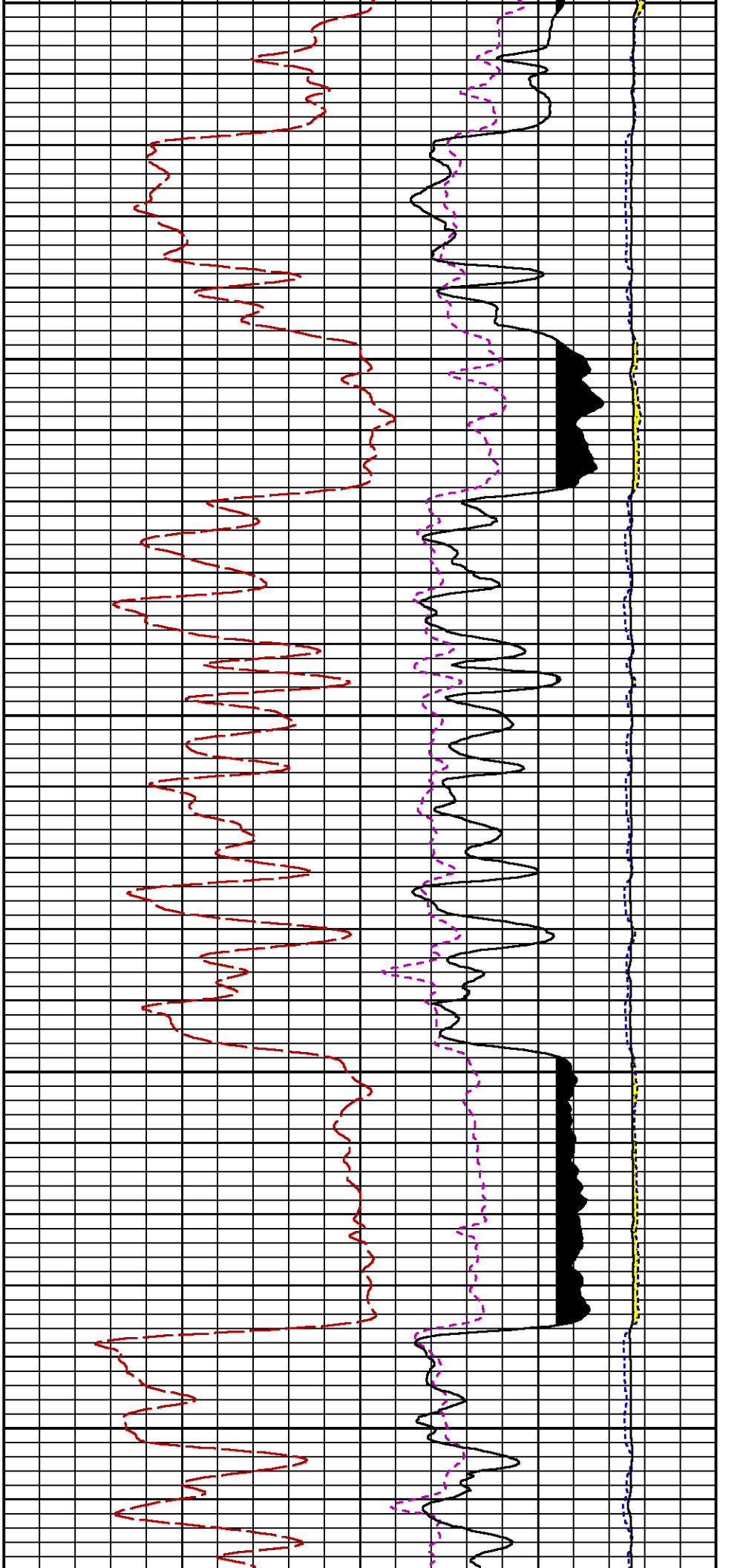
CURVE MEASURE POINT OFFSET							
CURVE	OFFSET (ft)	CURVE	OFFSET (ft)	CURVE	OFFSET (ft)	CURVE	OFFSET (ft)
CCL	-25.00	ISS	-12.75	RATO	-12.75	SGFC	-12.75
GR2	-22.75	LS	-12.75	RICS	-12.75	SS	-12.75

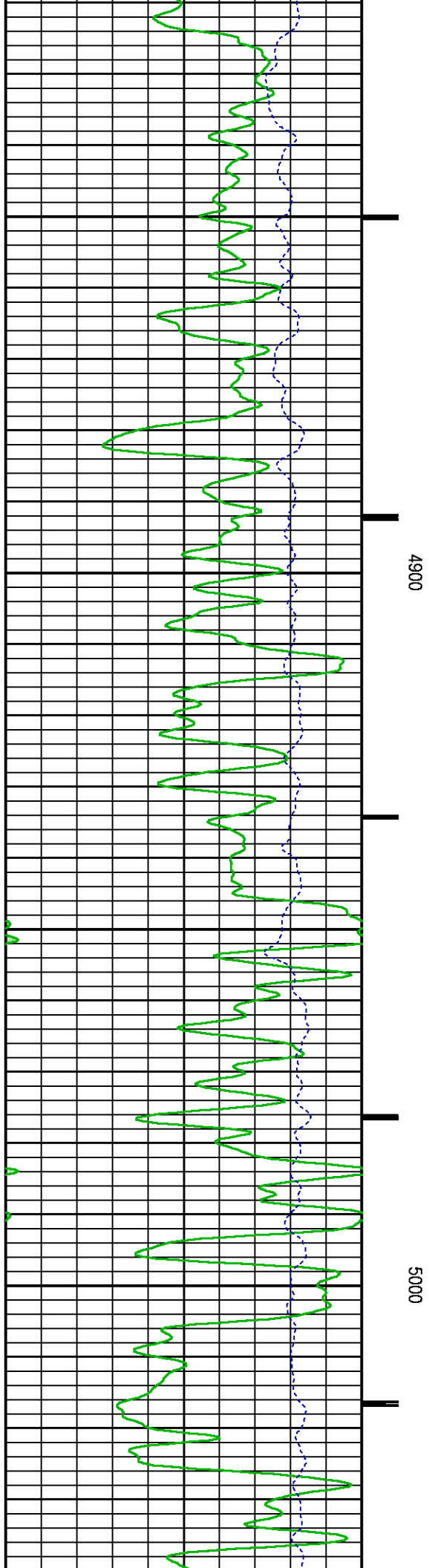
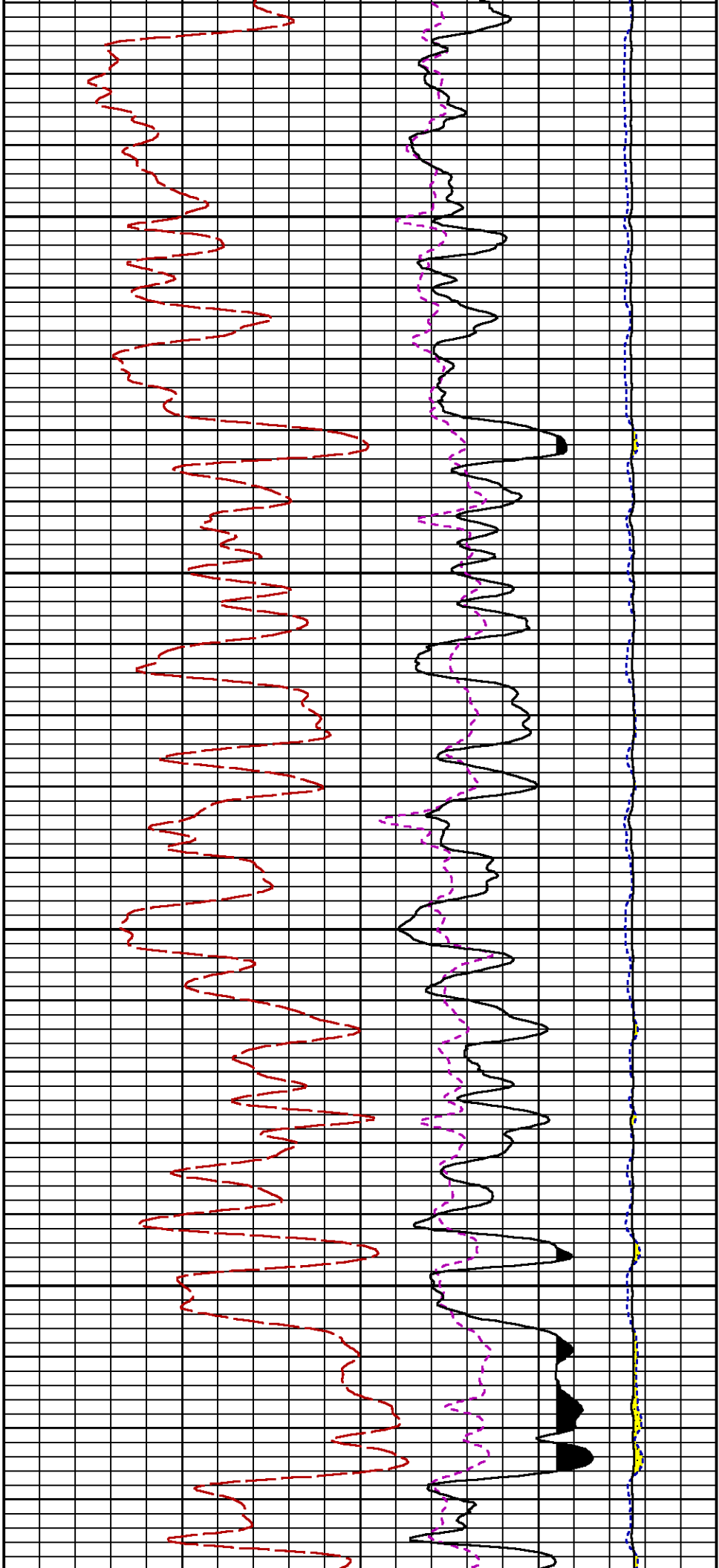
Presentation	: SysA:/dat1a/LARAMIE_NICHOLS_0994-24-17W/17W_RPM_WF.fvpdf [5"/100' Scale]
Plot Interval	: 4320 - 7649.25 Feet
Data File 1	: F1 : SysA:/dat1a/LARAMIE_NICHOLS_0994-24-17W/17W_RPM_WF.xtf
Created On	: N/A
Company	: LARAMIE ENERGY LLC
Well	: NICHOLS 0994_24_17W
Field	: VEGA
File Interval	: 4291 - 7649.5 Feet
OCT	: p354h

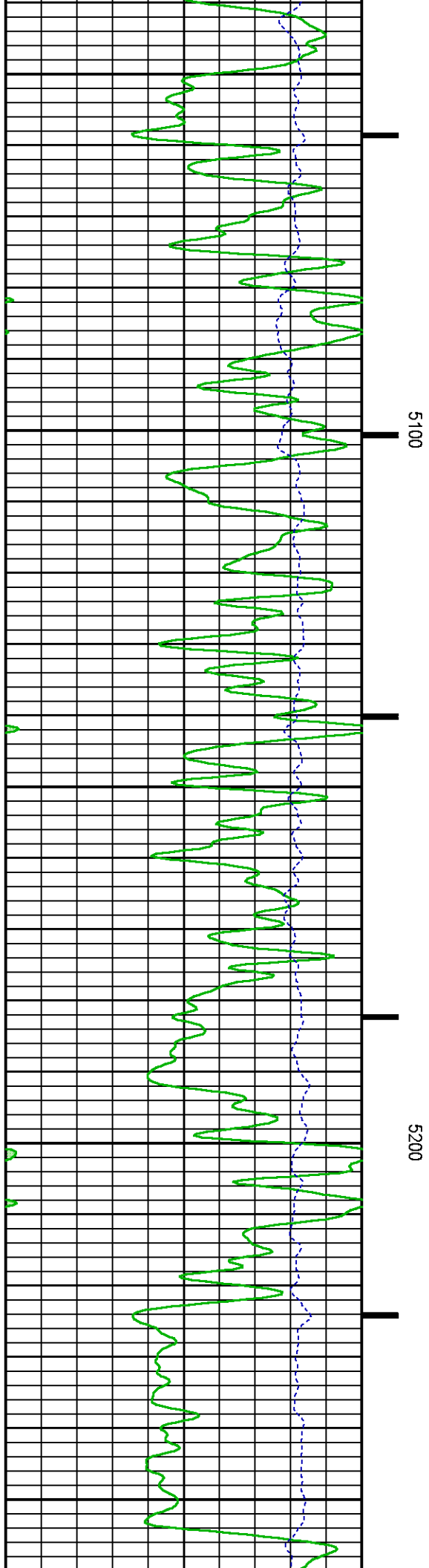
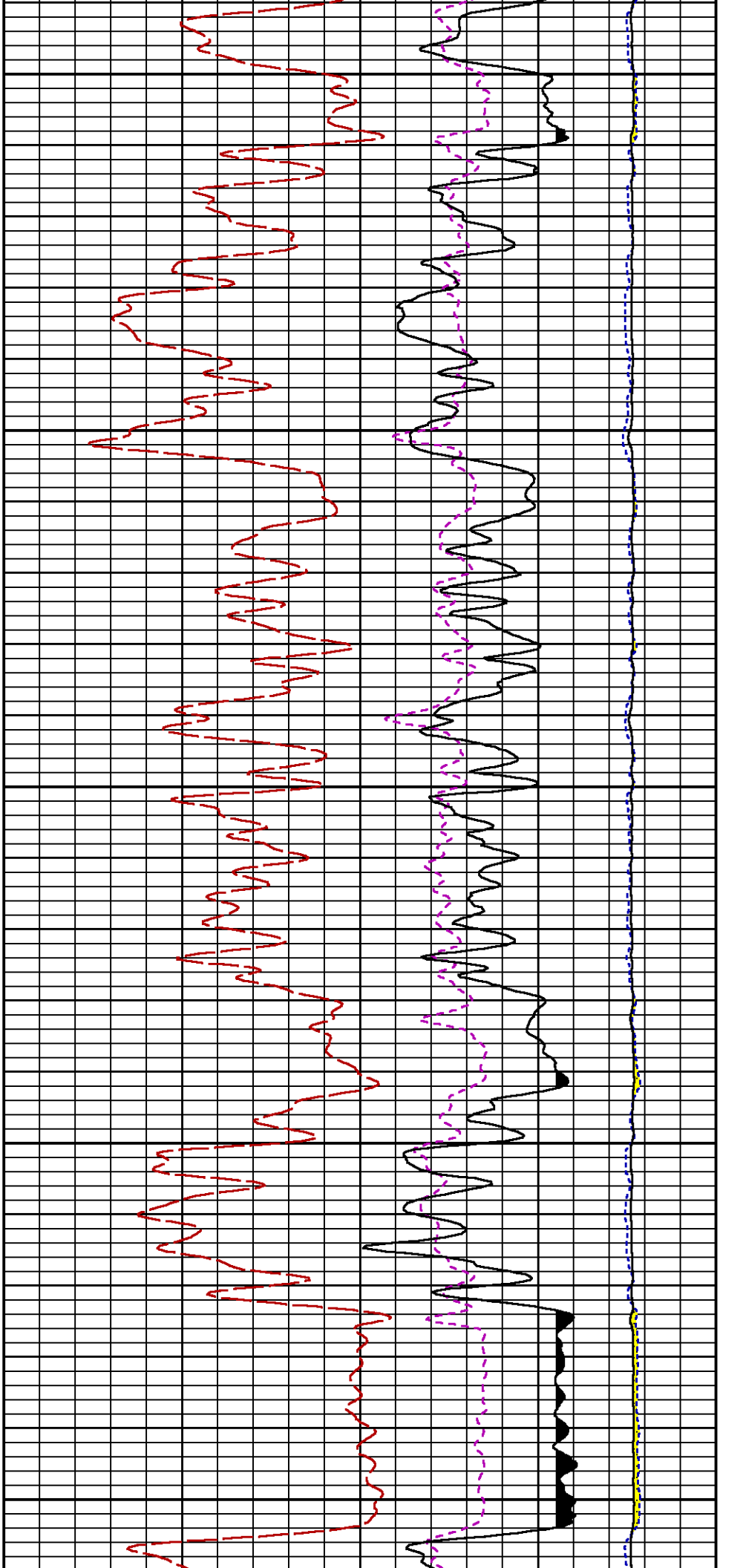


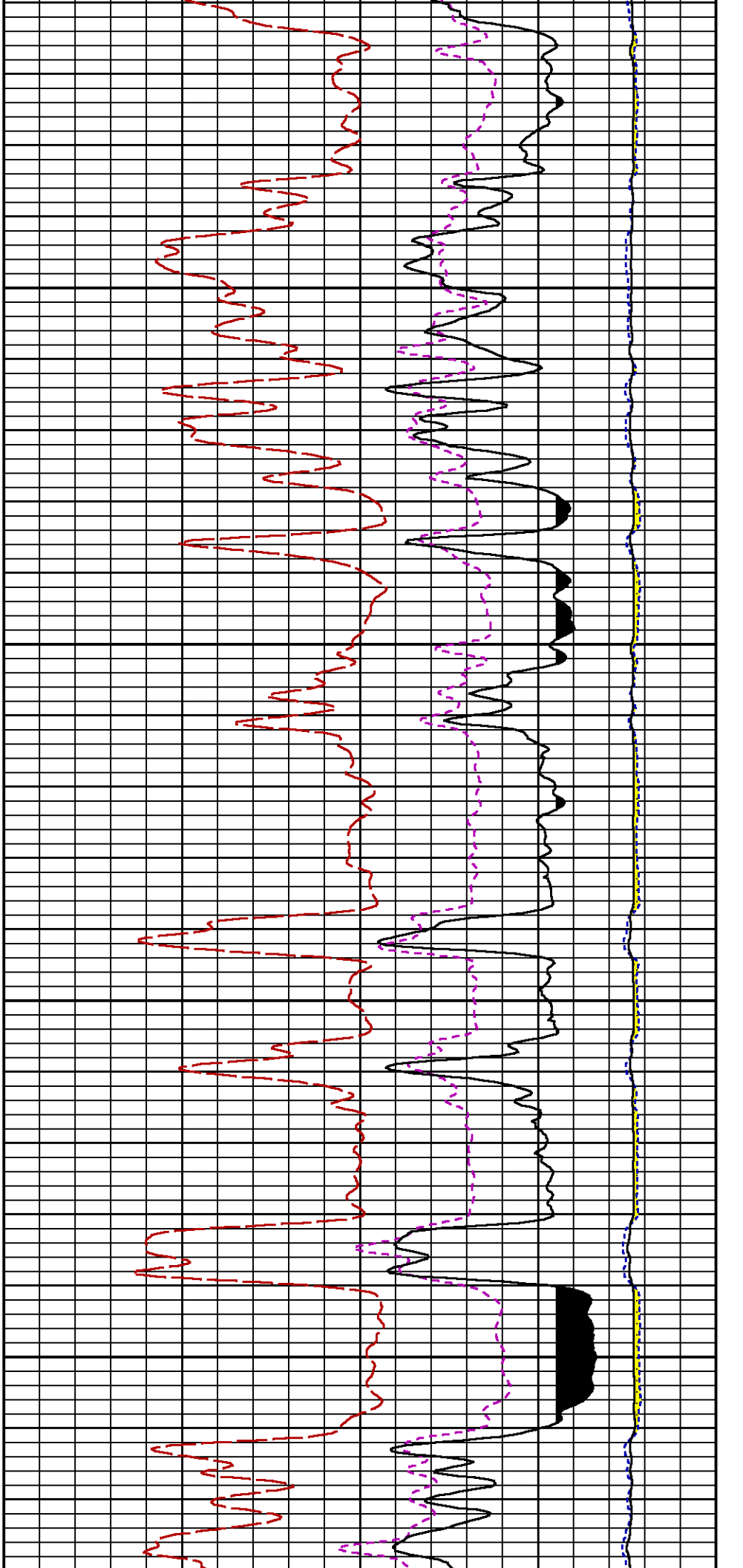






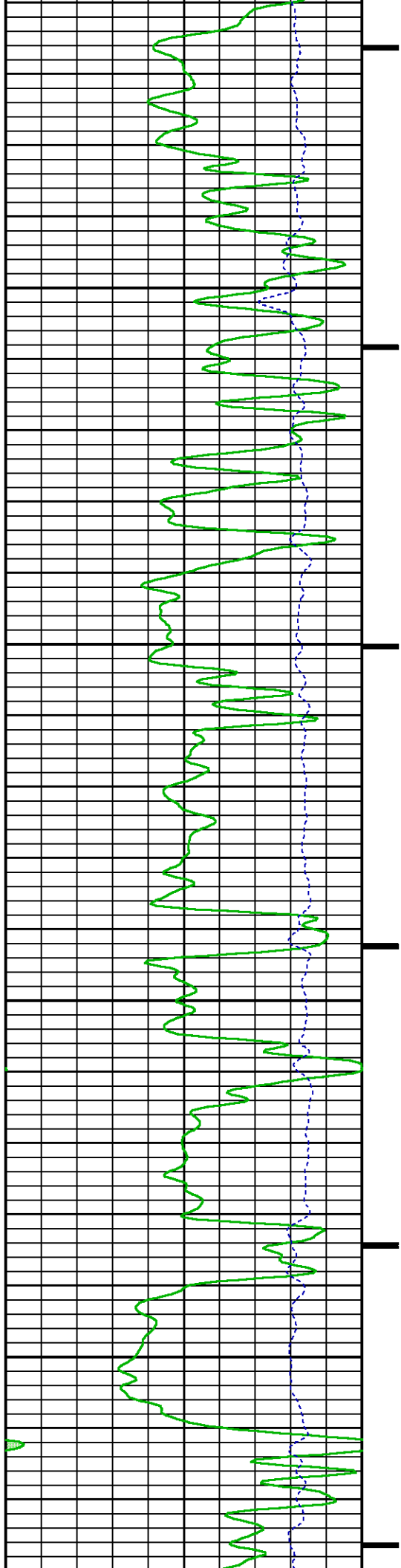


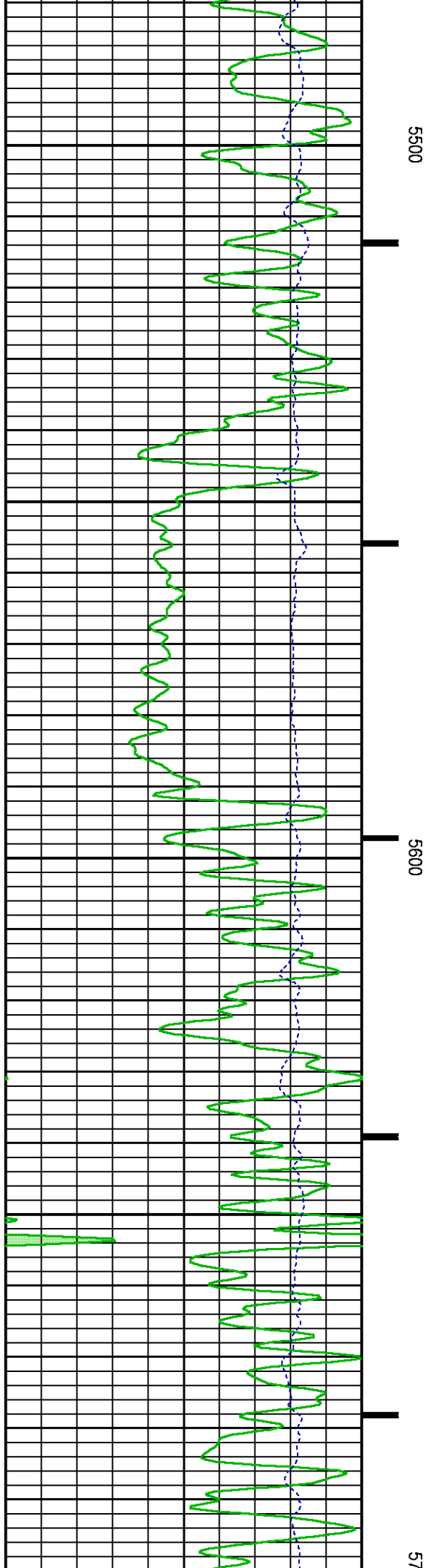
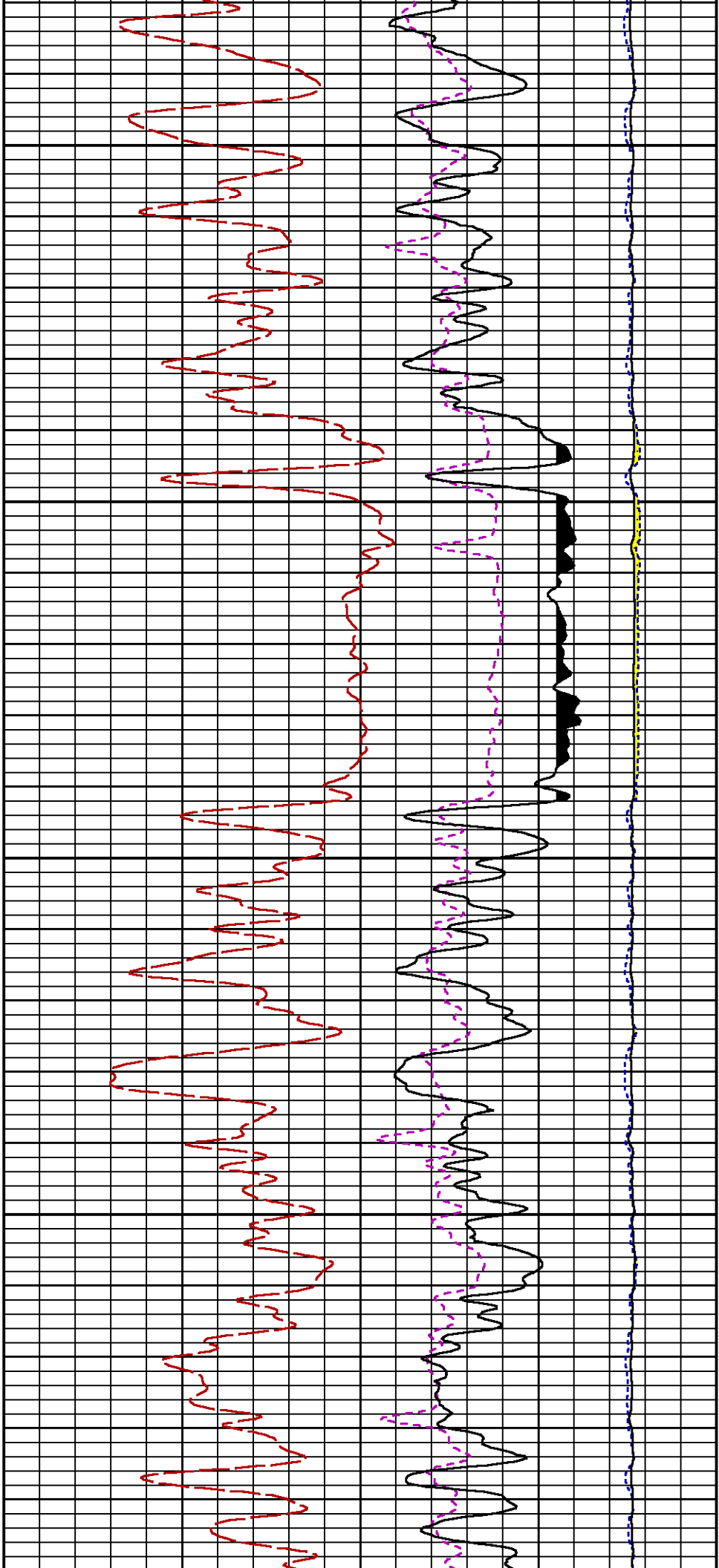


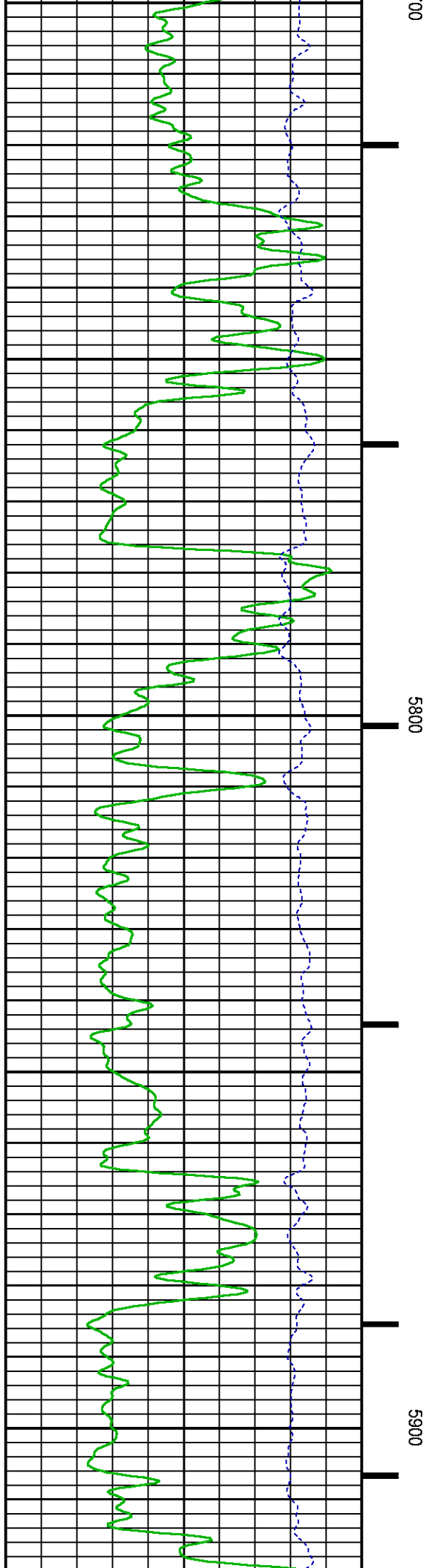
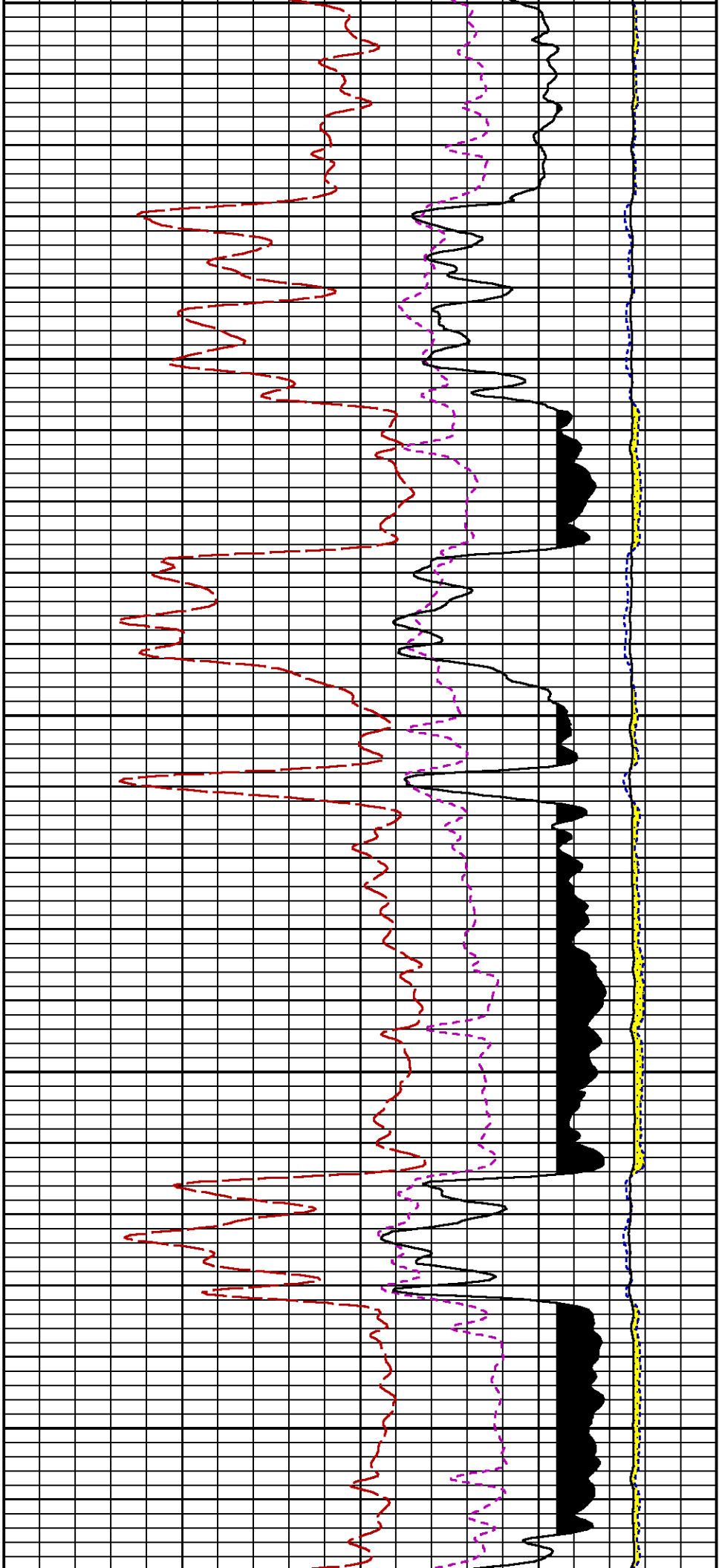


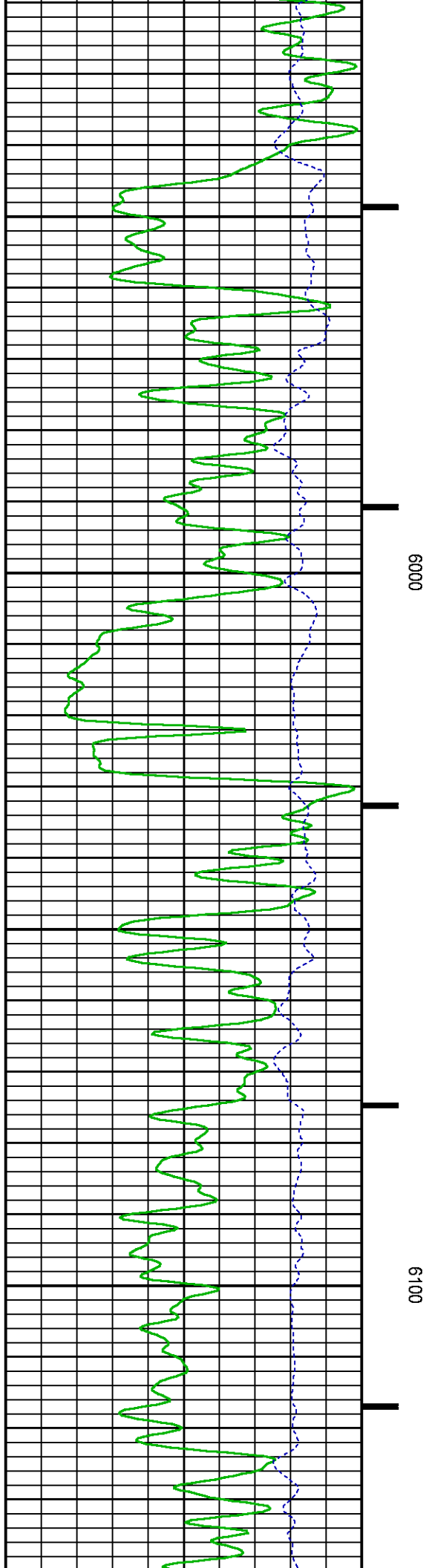
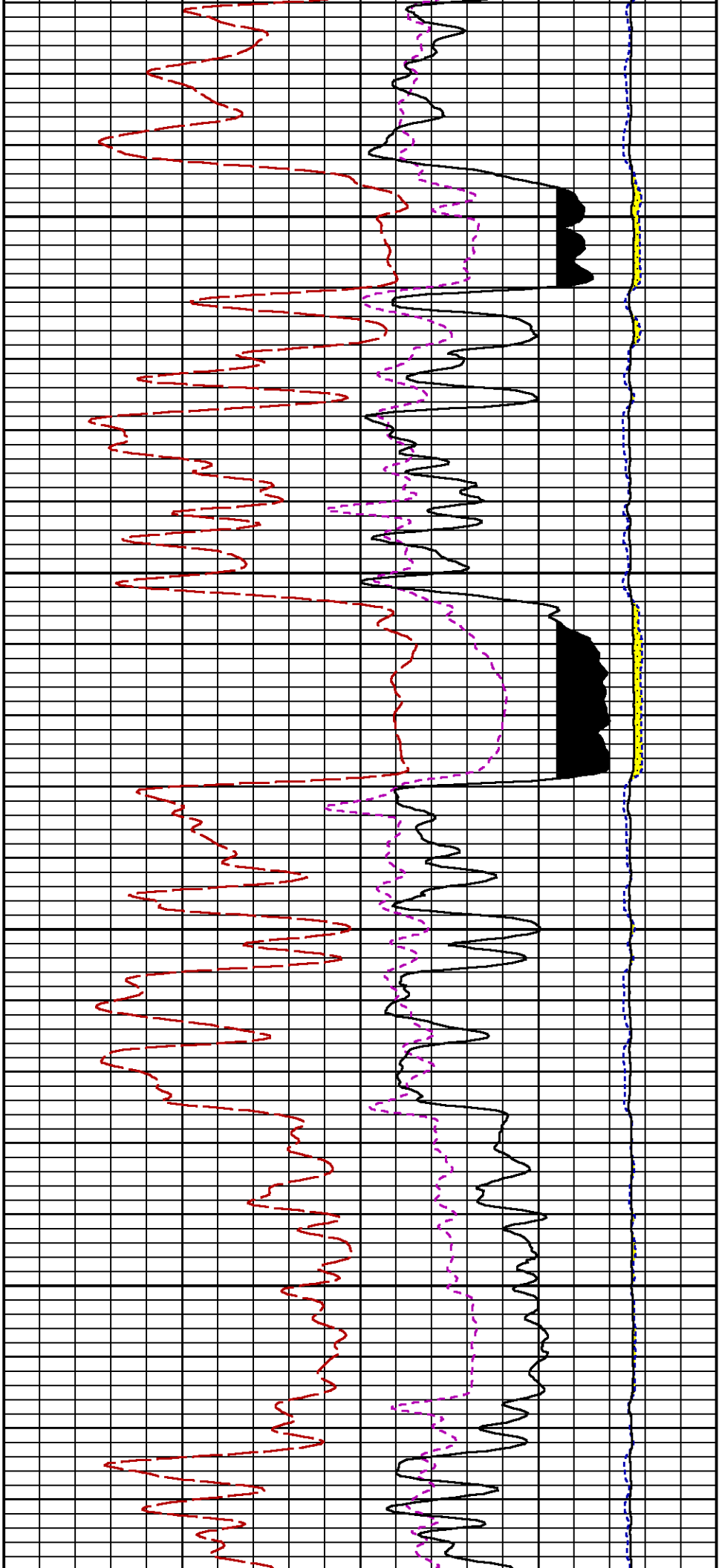
5300

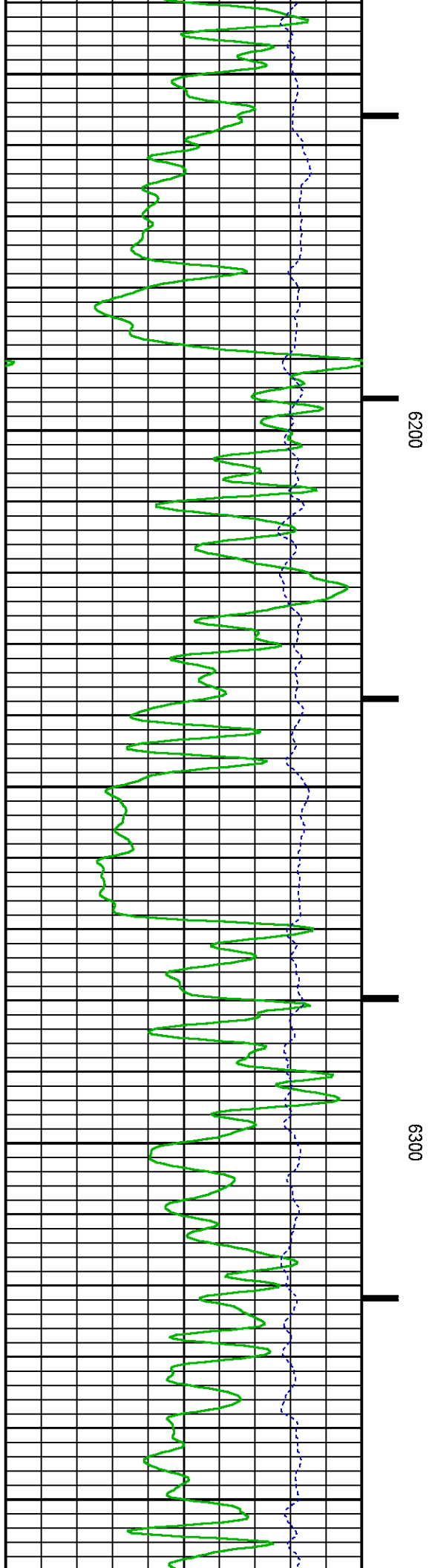
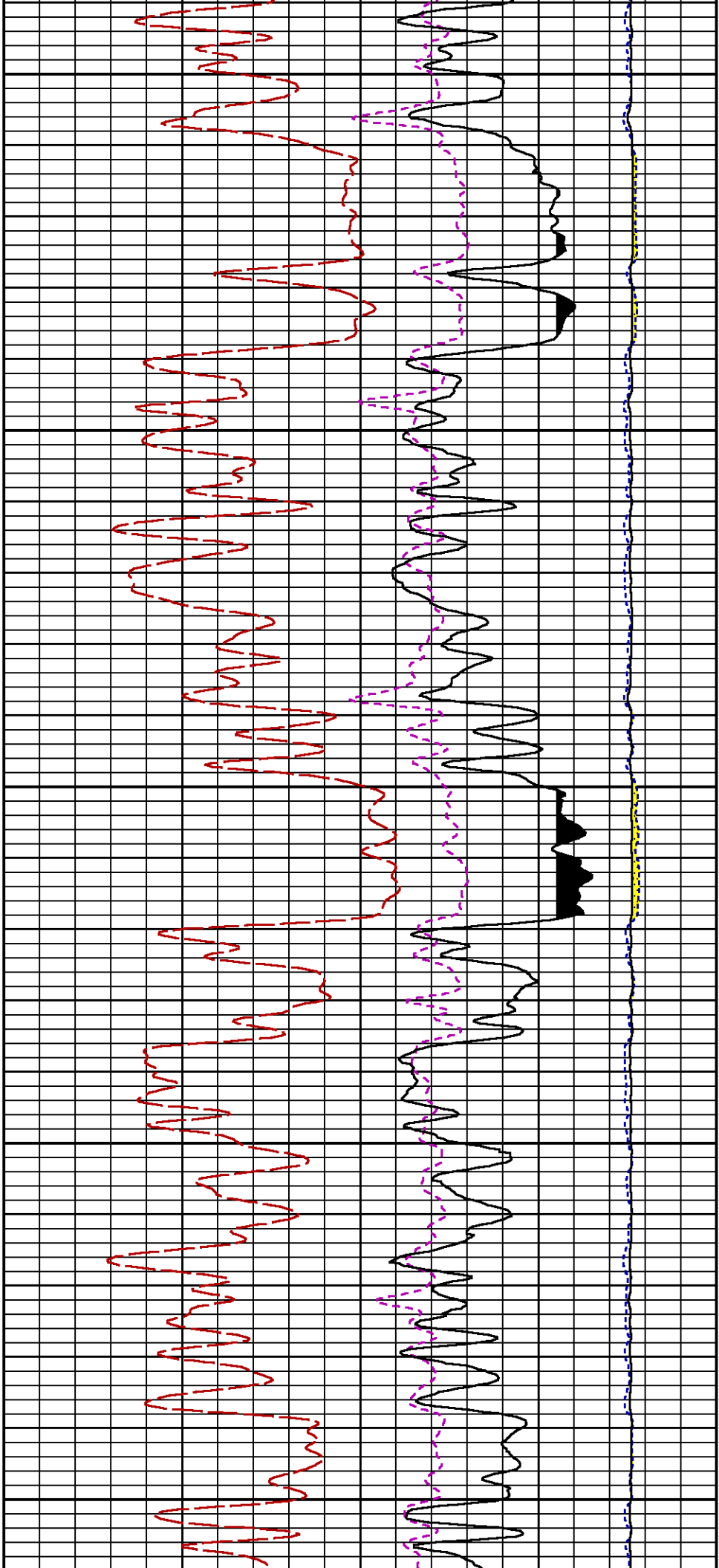
5400



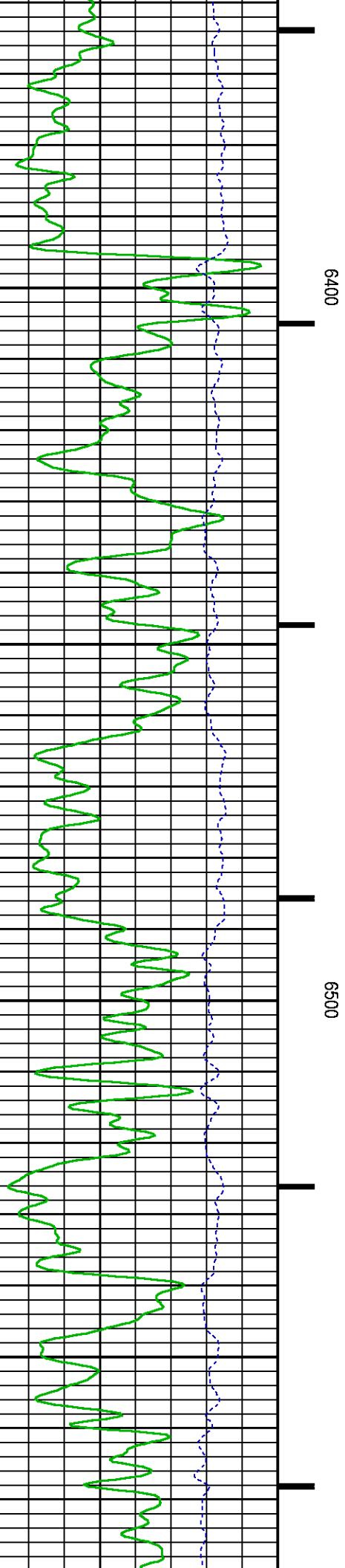
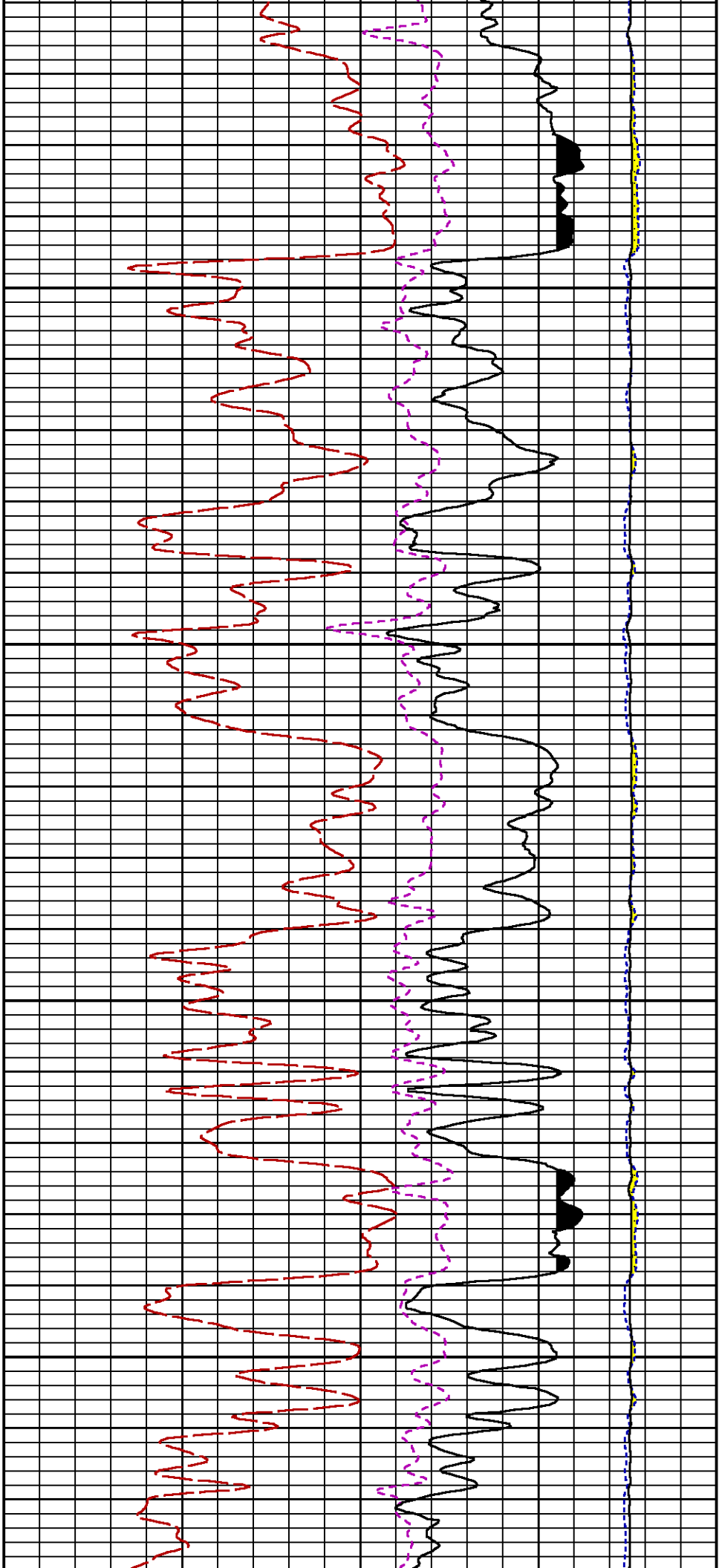


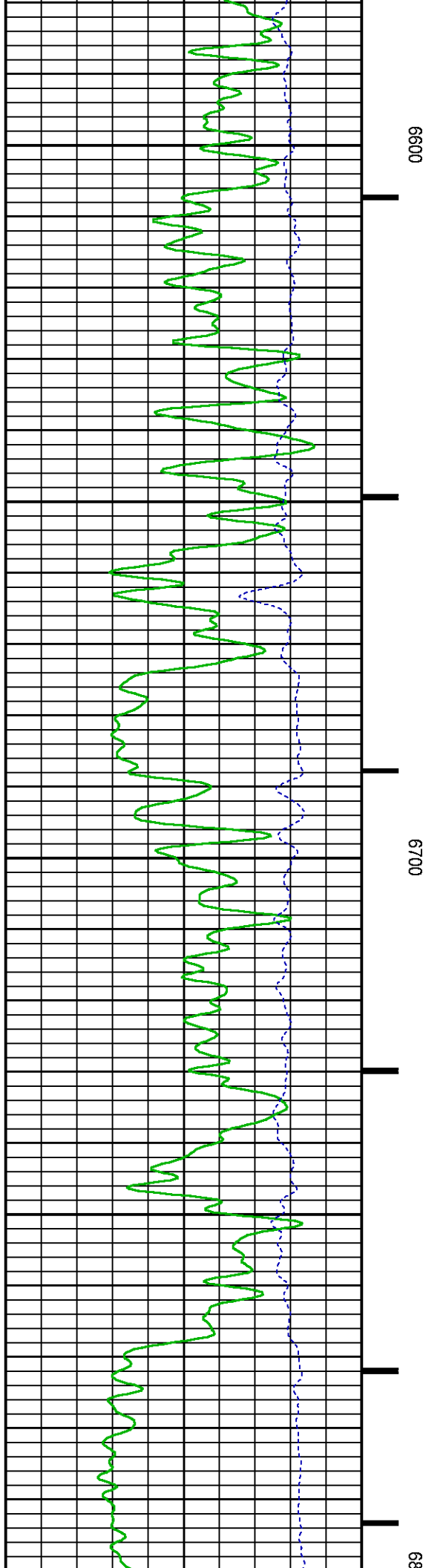
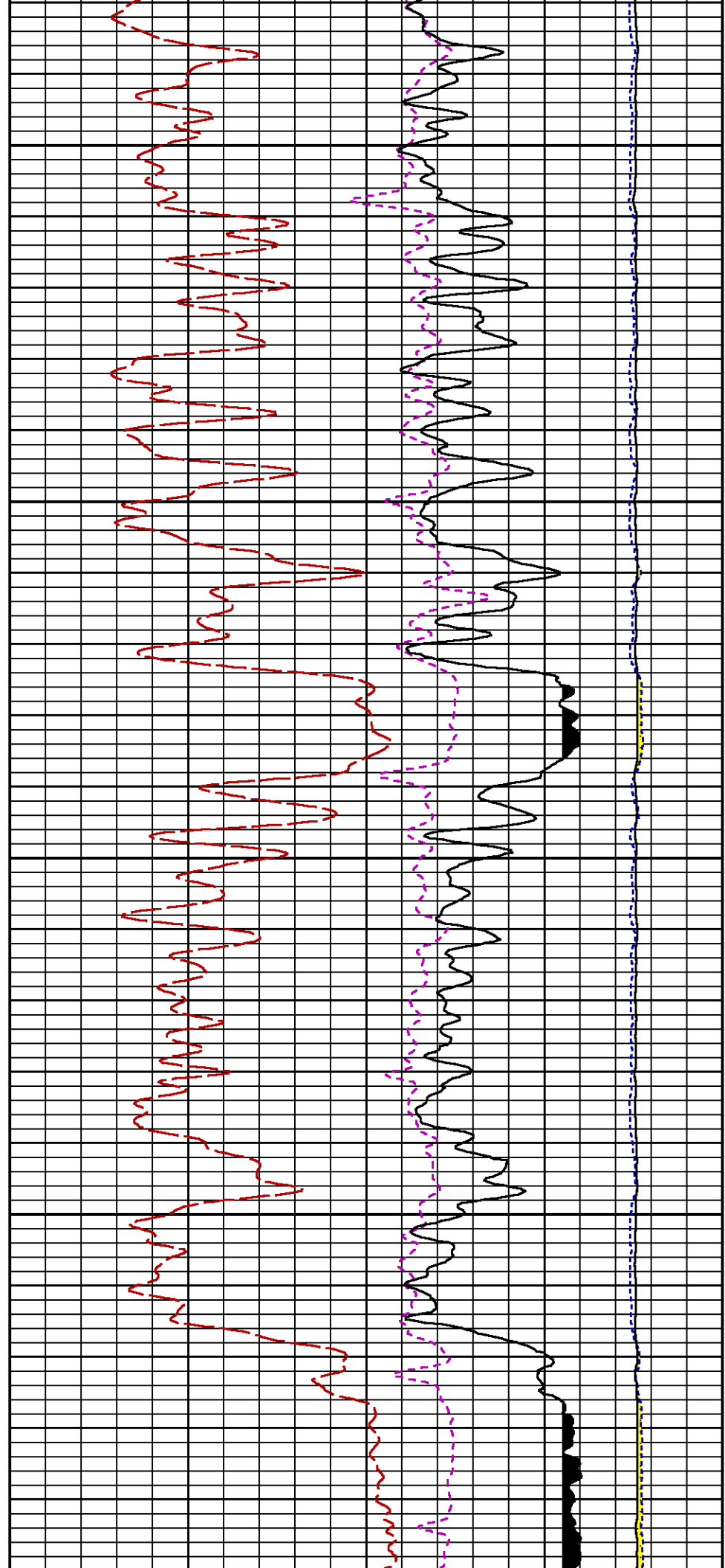


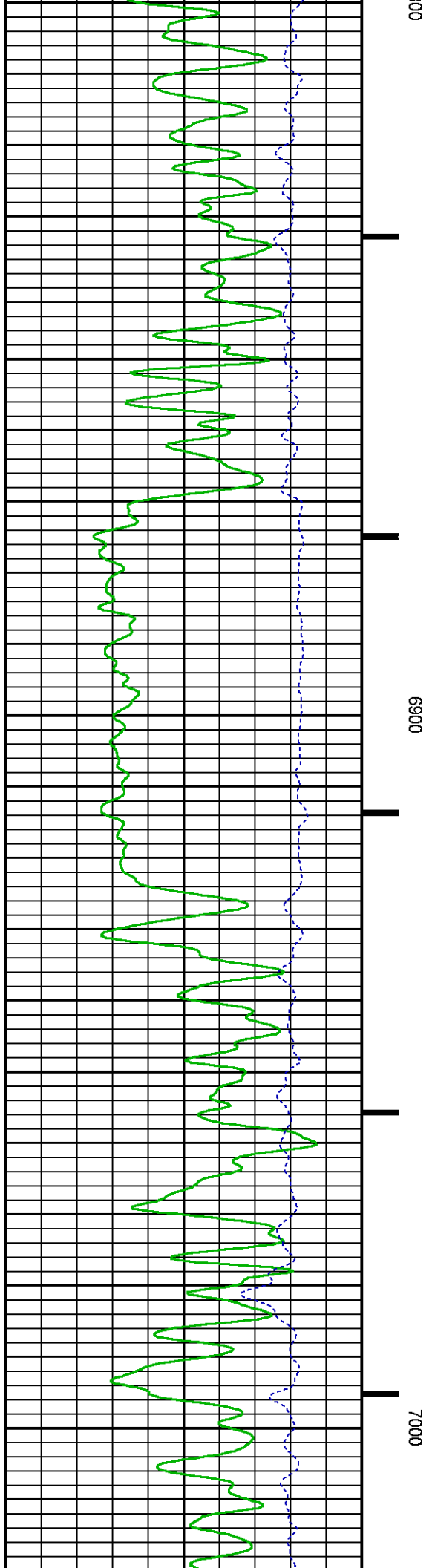
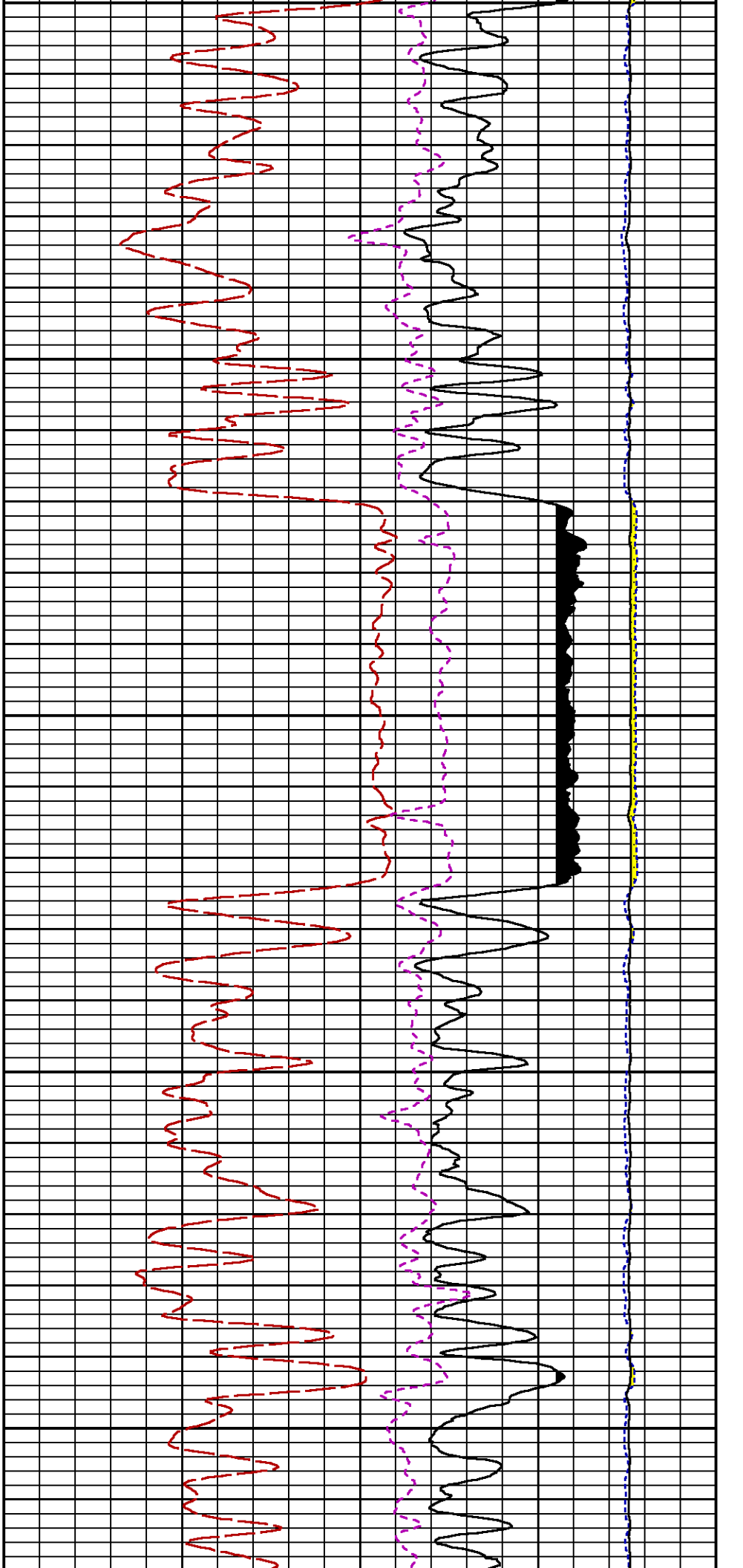


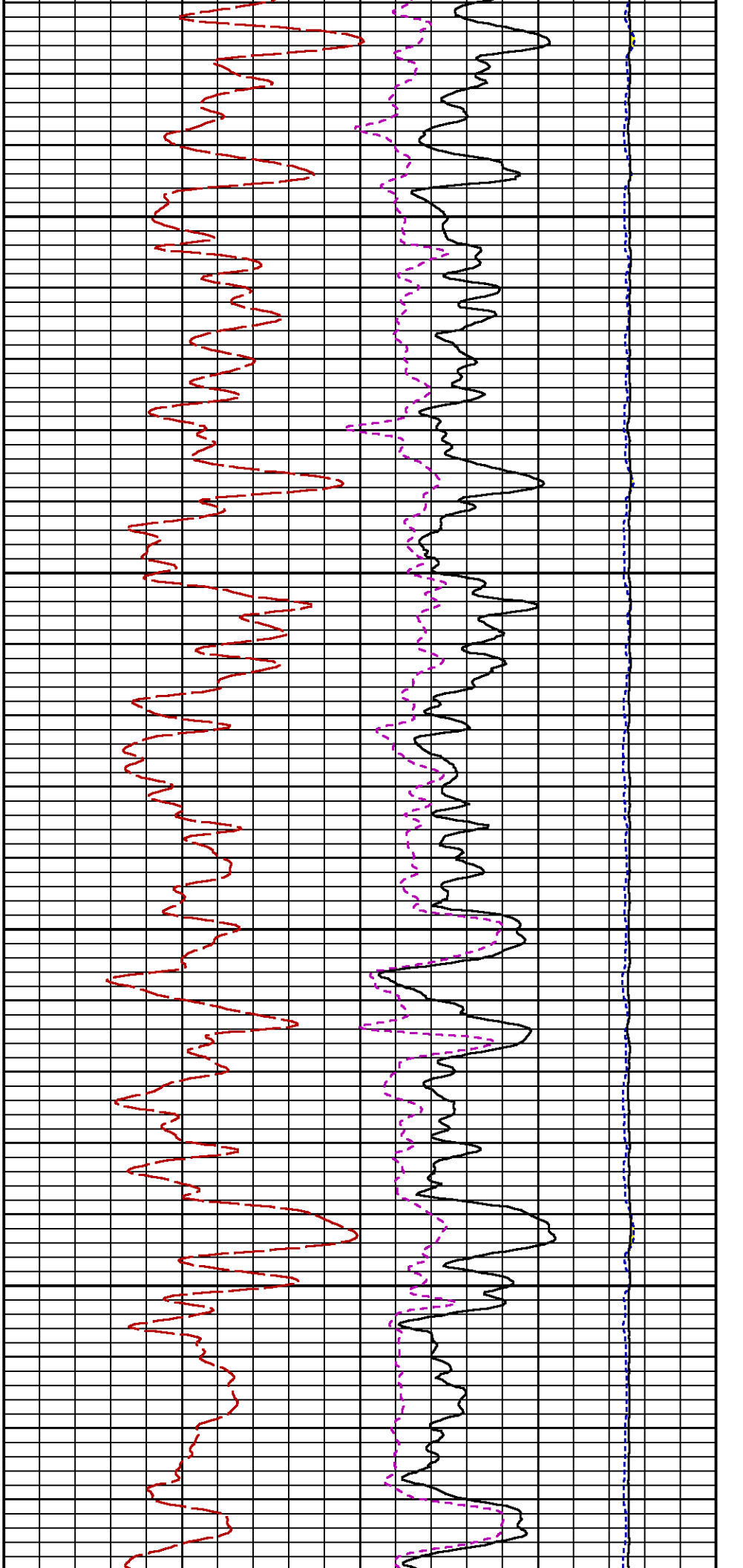






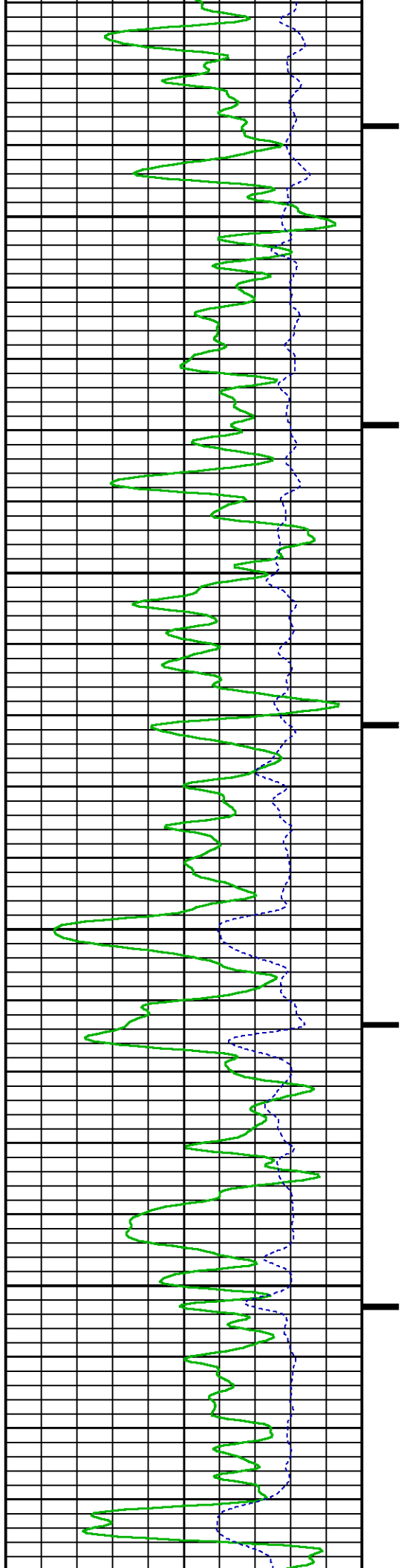


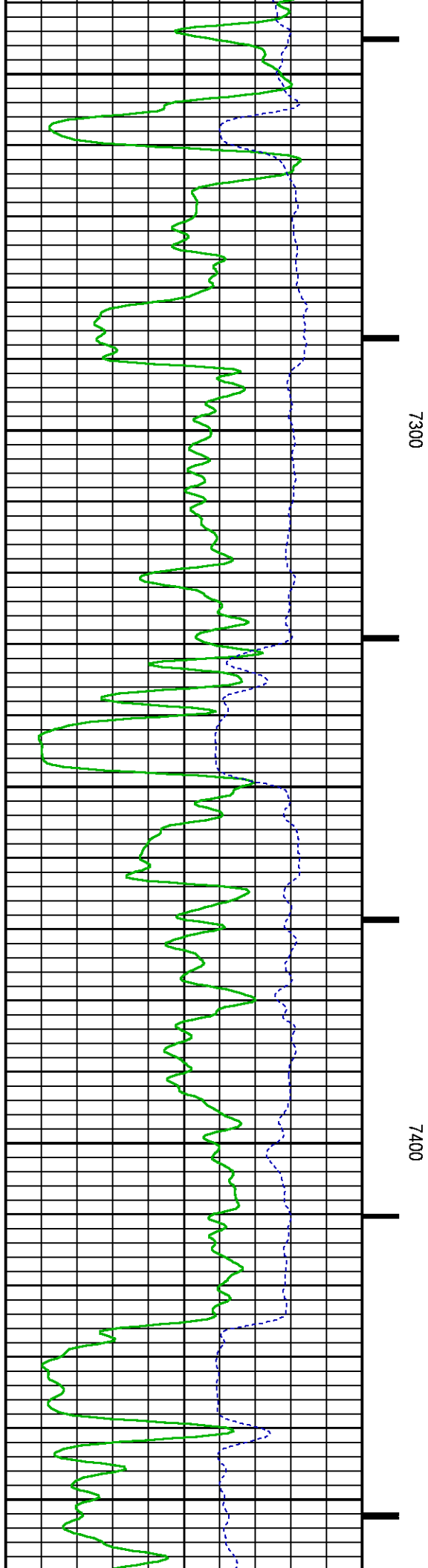
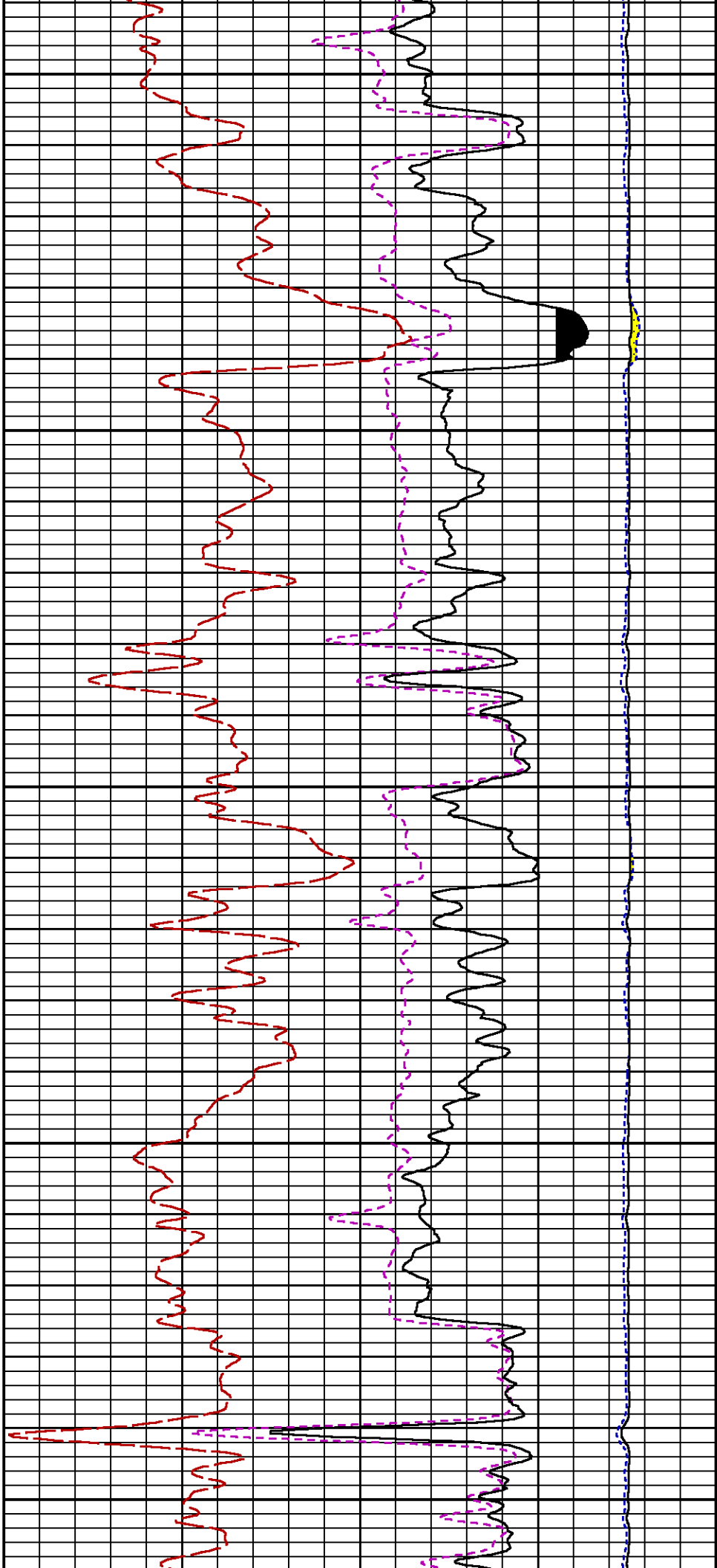


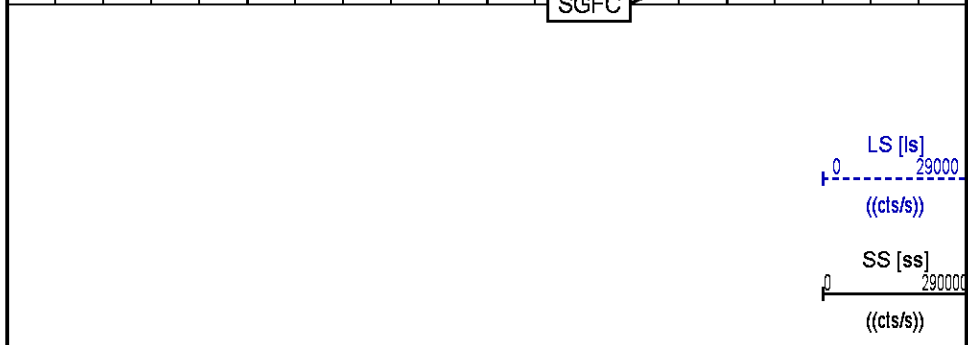
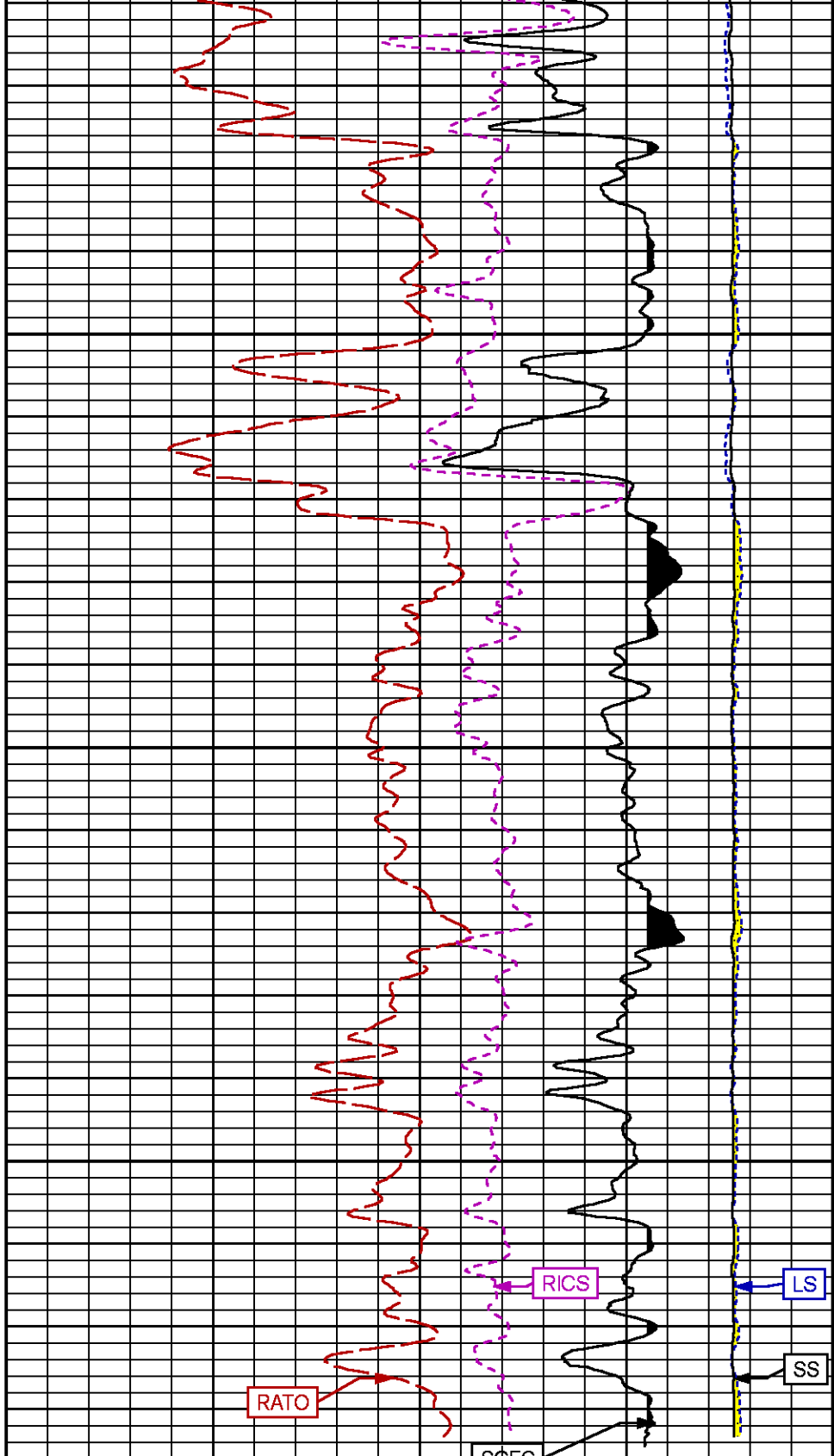
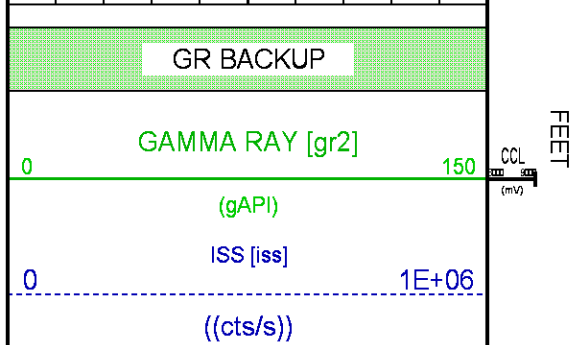
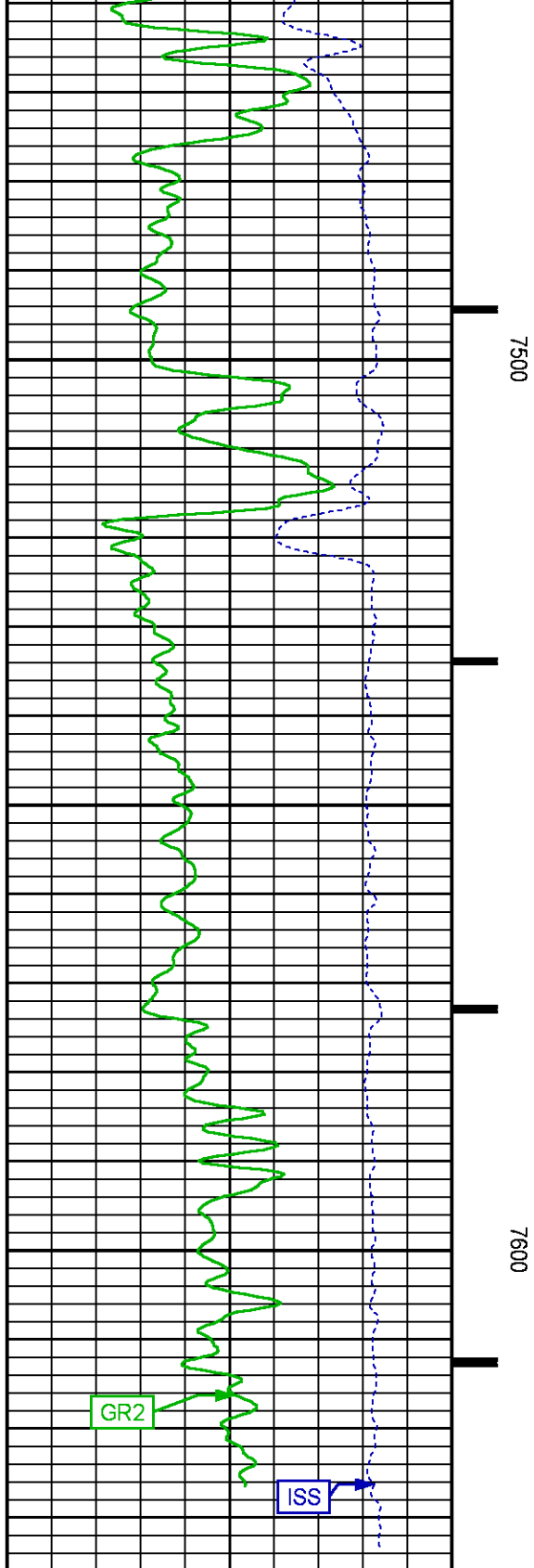


7100

7200







		(dim)
		RICS [rics]
	39	9
		(dim)
	60	0
		(cu)

REPEAT PASS

ECLIPS 7.0i ECLIPS General Release Rel 7.0i Thu Jun 08 20:36:10 CDT 2017  
Patches: 4

Plotted: Mon Jul 2 19:58:05 2018

### PARAMETER AND FILTER SUMMARY REPORT

FILE: /dat1a/LARAMIE\_NICHOLS\_0994-24-17W/p354h01.prm  
LOGGING MODE: DEPTH DIRECTION: UP  
TOP DEPTH: 5311.718 ft BOTTOM DEPTH: 5593.032 ft

### SYMMETRIC FILTER

MEASUREMENT TYPE	PARAMETER	VALUE	UNITS	INTERVAL (ft)
GR	FILTER ()	medium (1)		TOP BOTTOM

### RPM PROCESSING

MEASUREMENT TYPE	PARAMETER	VALUE	UNITS	INTERVAL (ft)
PNC Parameters	BOREHOLE CONTENTS	FLUID		TOP BOTTOM
	OPEN/CASED HOLE	CASED HOLE		" "
	BOREHOLE SIZE	7.88	in	" "
	LARGEST CASING OD	4.50	in	" "
	MATRIX	SANDSTONE		" "

### CURVE DESCRIPTION REPORT

CURVE NAME	CREATION DATE	CURVE DESCRIPTION
F1:CCL	N/A	CASING COLLAR LOCATOR
F1:GR2	N/A	GAMMA RAY 2
F1:ISS	N/A	INELASTIC SHORT SPACE COUNT RATE
F1:LS	N/A	LONG SPACE COUNT RATE
F1:RATO	N/A	SHORT/LONG SPACE COUNT RATE RATIO
F1:RICS	N/A	SHORT SPACE INELASTIC TO CAPTURE COUNT RATE RATIO (ISS/CSS)
F1:SGFC	N/A	BOREHOLE AND DIFFUSION CORRECTED SIGMA
F1:SS	N/A	SHORT SPACE COUNT RATE

### CURVE MEASURE POINT OFFSET

CURVE	OFFSET (ft)	CURVE	OFFSET (ft)	CURVE	OFFSET (ft)	CURVE	OFFSET (ft)
CCL	-25.00	ISS	-12.75	RATO	-12.75	SGFC	-12.75
GR2	-22.75	LS	-12.75	RICS	-12.75	SS	-12.75

Presentation : SysA:/dat1a/LARAMIE\_NICHOLS\_0994-24-17W/17W\_RPM\_REPEAT.fvpdf [5"/100' Scale]  
Plot Interval : 5298.75 - 5601.25 Feet

Data File 1 : F1 : SysA:/dat1a/LARAMIE\_NICHOLS\_0994-24-17W/17W\_RPM\_REPEAT.xtf  
Created On : N/A

Company : LARAMIE ENERGY LLC

Company : LARAMIE ENERGY LLC  
Well : NICHOLS 0994\_24\_17W  
Field : VEGA  
File Interval : 5298 - 5601.5 Feet  
OCT : p354h

GR BACKUP

FEET

GAMMA RAY [gr2]

0 150 CCL (m)

(gAPI)

ISS [iss]

0 1E+06

((cts/s))

5300

5400

LS [ls]

0 29000

((cts/s))

SS [ss]

0 29000

((cts/s))

RATO [rato]

17

0

(dim)

RICS [rics]

39

9

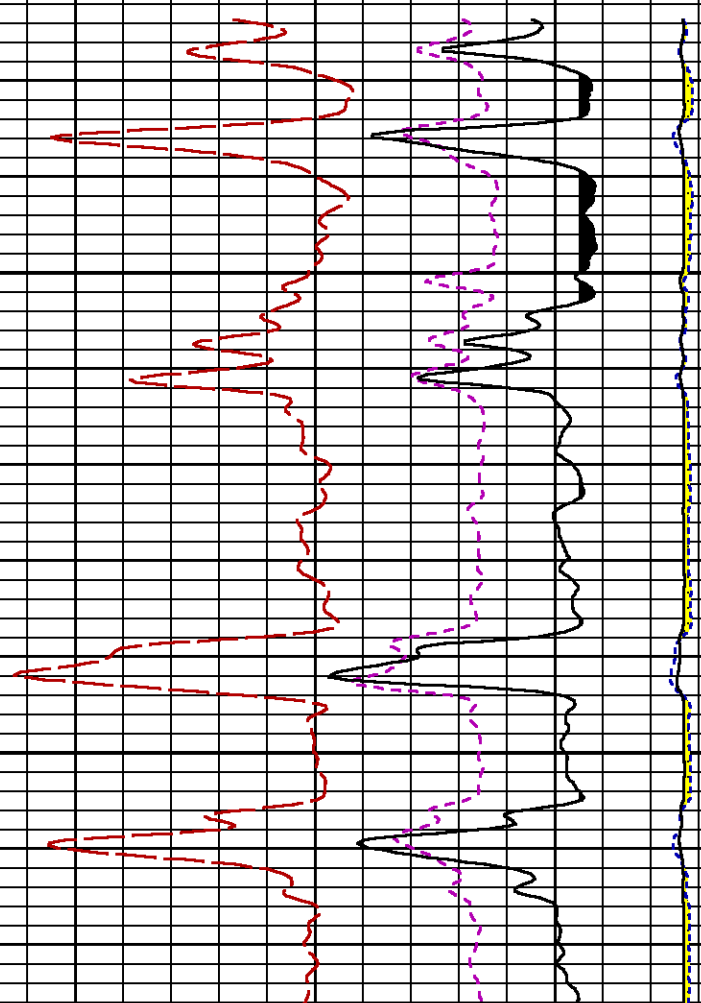
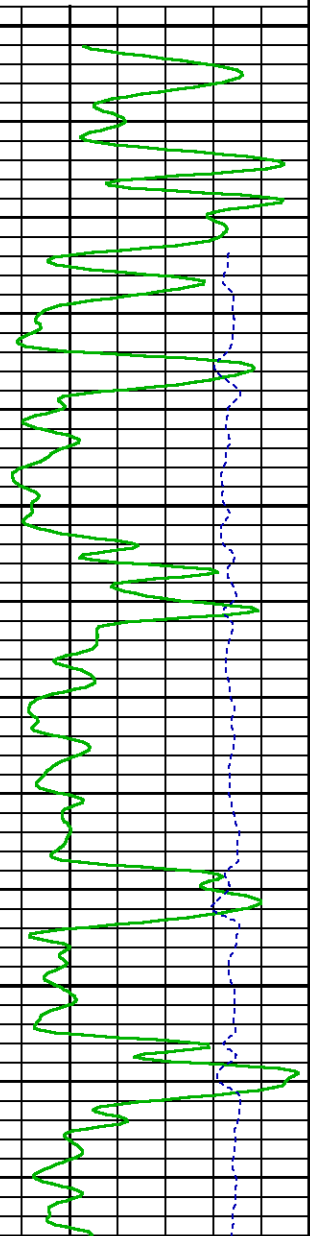
(dim)

SGFC [sgfc]

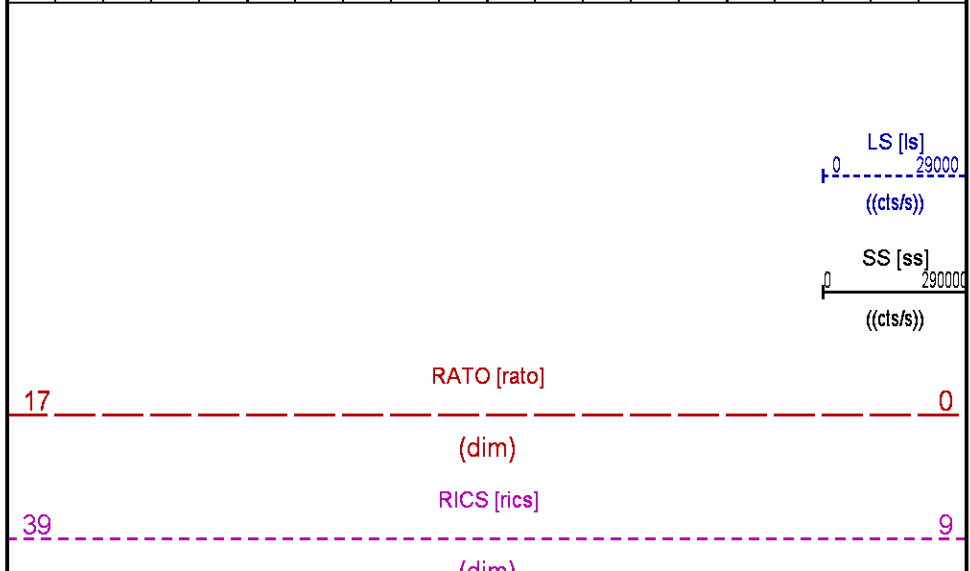
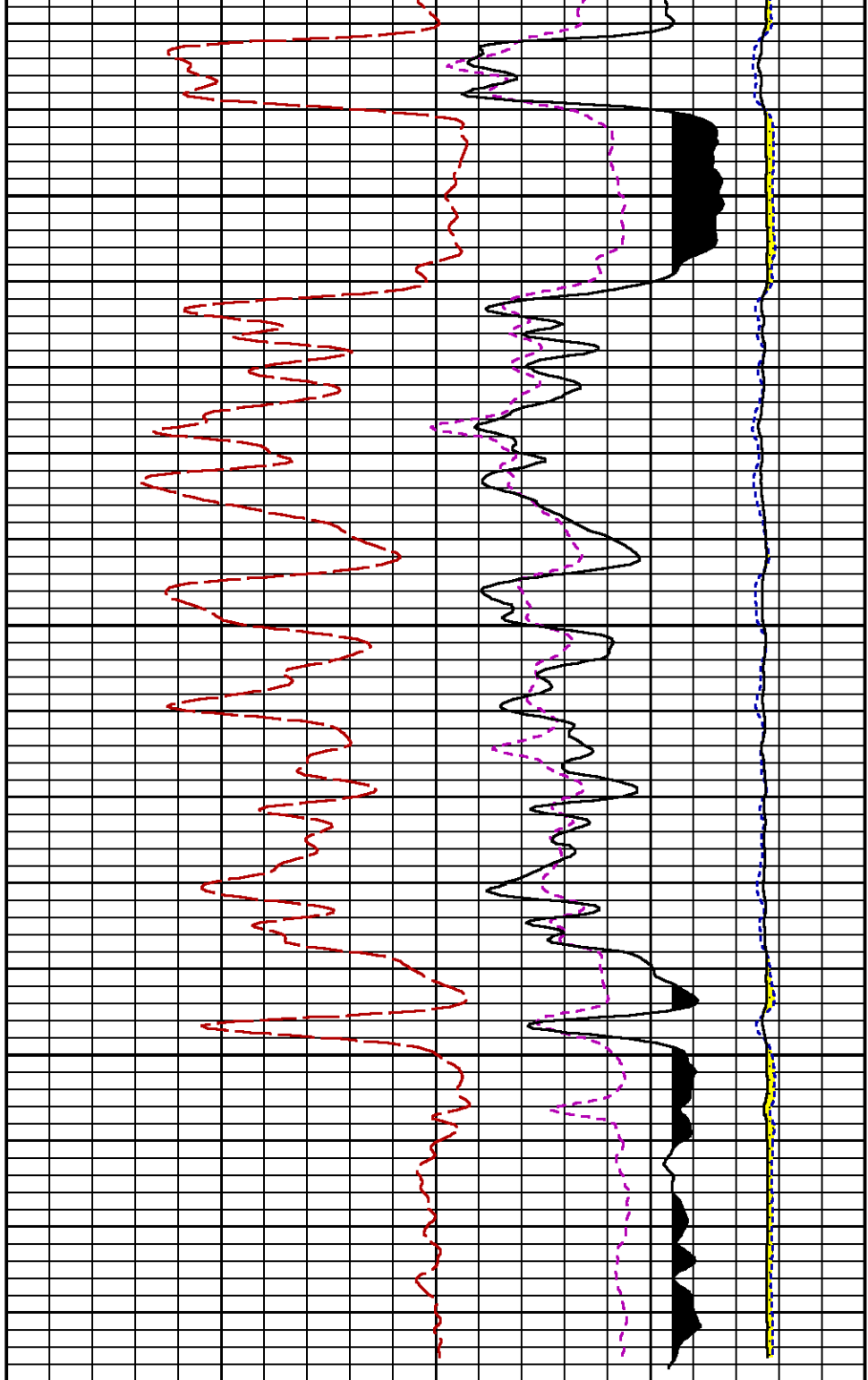
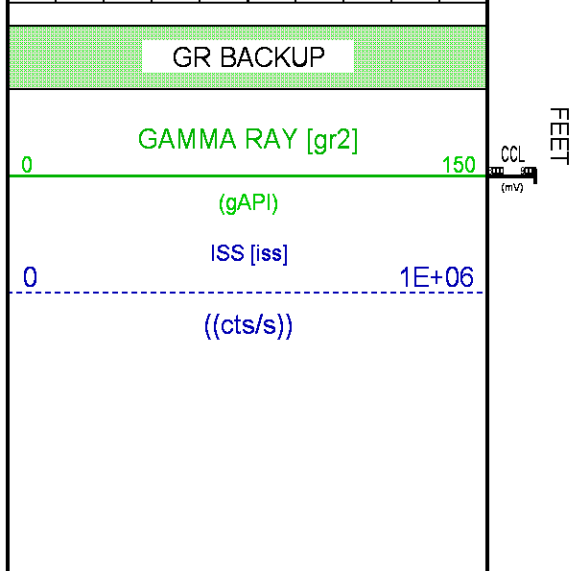
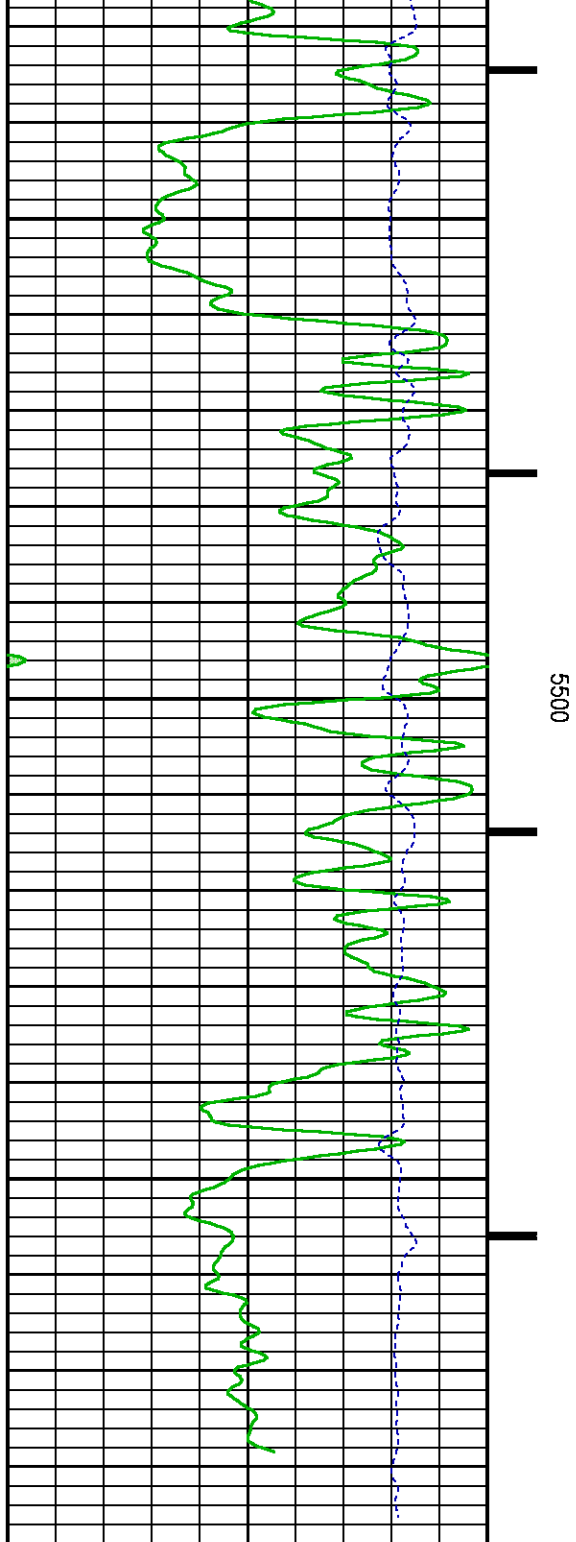
60

0

(cu)







60

SGFC [sgfc]

0

(cu)

**CALIBRATION / VERIFICATION SUMMARY**

Source File: /dat1a/LARAMIE\_NICHOLS\_0994-24-17W/p354h.tp1

**GR PRIMARY CALIBRATION SUMMARY**

TOOL #: 2812LB 11621284

DATE/TIME PERFORMED: Fri May 11 07:38:13 2018

UNIT #: 3885TD SHAFT1

CALB JIG #: 4702NK BA-930

	BACKGROUND (cts/s)	CALBRTR ON (cts/s)	CR DIFF (cts/s)	MULT	BACKGROUND (gAPI)	CALBRTR ON (gAPI)	CALBRTR (gAPI)
GR	63.62	275.42	211.8	0.992	63.08	273.08	210

**GR PRIMARY VERIFICATION SUMMARY**

TOOL #: 2812LB 11621284

DATE/TIME PERFORMED: Fri May 11 07:40:26 2018

UNIT #: 3885TD SHAFT1

VERI JIG #: 4702NK BA-930

	BACKGROUND (cts/s)	CALBRTR ON (cts/s)	MULT	BACKGROUND (gAPI)	CALBRTR ON (gAPI)	DIFF. (gAPI)
GR	58.89	276.18	0.992	58.39	273.83	215.44
						200.00 220.00

**RPM\_PNC\_3D PRIMARY CALIBRATION SUMMARY**

TOOL: 8283PA 10068031

DATE/TIME PERFORMED: Mon May 7 23:51:27 2018

UNIT: 5753XD 111111

CALIBRATOR: 2437XB 112674

SOURCE: 8281AA 10047980

HOURS: 8281AA 63

	ISS	Mtr VIts (V)	SS Gain	LS Gain	XLS Gain	EA Temp (degF)	Sync Delay (usec)	RCAL
Raw Data	802814	119	2217	2481	2198	114	8.0	1.0138

Interpolated	1300000	139	2201	2485	2184
--------------	---------	-----	------	------	------

	ISS	BKS	BKL	BKX	SGA1	SDA1	SGA2	SDA2
Raw Data	802814	7129	1185	158	25.96	0.15	24.13	0.33
					25.35 26.40	0.00 0.20	23.60 24.80	0.00 0.40

	ISS	ILS	IXS	SS	SS2	LS	CSS	CLS
Raw Data	802814	174125	28683	86762	30909	8359	52608	13370
Fit Quality %		0.791	0.627	0.866	0.857	0.798	0.841	0.839

	ISS	RBOR	RIN ISS/ILS	RIN13 ISS/IXS	RICS ISS/CSS	RATO SS/LS	RTWO SS2/LS	RONE CSS/CLS
Raw Data	802814	1.44	4.61	28.00	15.26	10.38	3.70	3.94
		1.42 1.45	3.55 5.52	22.20 32.70	10.99 16.34	10.06 11.10	3.57 3.95	3.76 4.22
Fit Quality %		0.030	0.272	1.006	0.137	0.113	0.110	0.077
Reduced	1449874	1.44	4.61	27.83	15.26	10.37	3.69	3.93
		1.42 1.45	4.33 5.52	27.60 32.70	13.70 16.34	10.06 11.10	3.57 3.95	3.76 4.22

# INSTRUMENT CONFIGURATION

Source File: /dat1a/LARAMIE\_GUNDERSON\_0994-14-17E/RPM-tdg

<u>A3 CABLEHEAD</u> Diameter : 1.37"	33.24'
<u>PCM POWER SUPPLY</u> Diameter : 1.70" Length : 3.86' Weight : 18 lbs Series : 8250EA Mnemonic : PCM	
<u>TELEMETRY / CCL</u> Diameter : 1.70" Length : 4.46' Weight : 20 lbs Series : 8248ED Mnemonic : PCM Measure Point: 1.00': CCL MP	CCL MP 25.19'
<u>GAMMA RAY 1 11/16"</u> Diameter : 1.69" Length : 2.17' Weight : 10 lbs Series : 2812LA Mnemonic : GR	GR MP 22.64'
<u>RPM ELECTRONICS</u> Diameter : 1.70" Length : 4.48' Weight : 16 lbs Series : 8281EA Mnemonic : RPM	
<u>RPM C DETECTOR SECTION</u> Diameter : 1.70" Length : 9.40' Weight : 41 lbs Series : 8283PA Mnemonic : RPM Measure Point: 5.45': XLS MP Measure Point: 5.04': LS MP Measure Point: 4.79': SS MP	XLS MP 13.58' LS MP 13.16' SS MP 12.91'
<u>RPM SOURCE SECTION</u> Diameter : 1.70" Length : 4.70' Weight : 18 lbs Series : 8281FA Mnemonic : RPM	
<u>TEMPERATURE / PRESSURE</u> Diameter : 1.70" Length : 3.30' Weight : 13 lbs Series : 8255XA Mnemonic : SRPL Measure Point: 1.52': TEMP MP	TEMP MP 1.65' PRES MP
<u>BULL PLUG 1 11/16</u>	0.00'
TOTAL LENGTH: 33.24' TOTAL WEIGHT: 140 lbs MAX DIAMETER: 0'1.70"	



COMPANY	LARAMIE ENERGY LLC		FILE NO:
WELL	NICHOLS 0994-24-17W		CH137652
FIELD	VEGA		API NO:
COUNTY	MESA	STATE COLORADO	05077103880000
LOCATION:		ELEVATIONS:	
SHL: 2301' FNL & 2782' FWL		KB 7236 FT	
BHL: 1154' FSL & 1549' FWL		DF	
		GL 7212 FT	
SEC 24	TWP 9S	RGE 94W	DATE 02-Jul-2018

