

OPERATOR: **Extraction Oil & Gas**

WELL NAME: **Trott 8E-10-11N**

FIELD NAME: DJ Basin - Wattenberg

DRILLING RIG: Patterson 901

API #: 05-123-45712

LAT/LONG: 40.324428, -105.039652
SURFACE HOLE: NESE S7-T4N-R68W, 1542' FSL, 768' FEL
BOTTOM HOLE: S8-T4N-R68W, 1524' FSL, 460' FEL

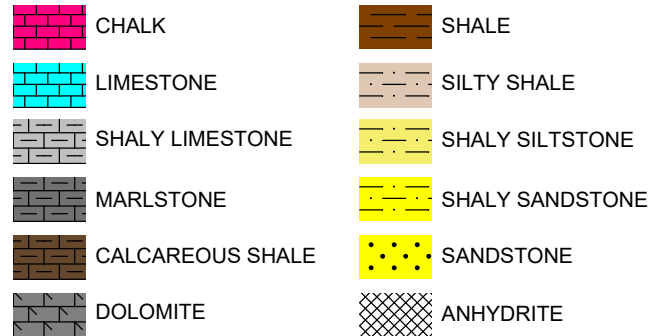


Earth Science Agency, LLC

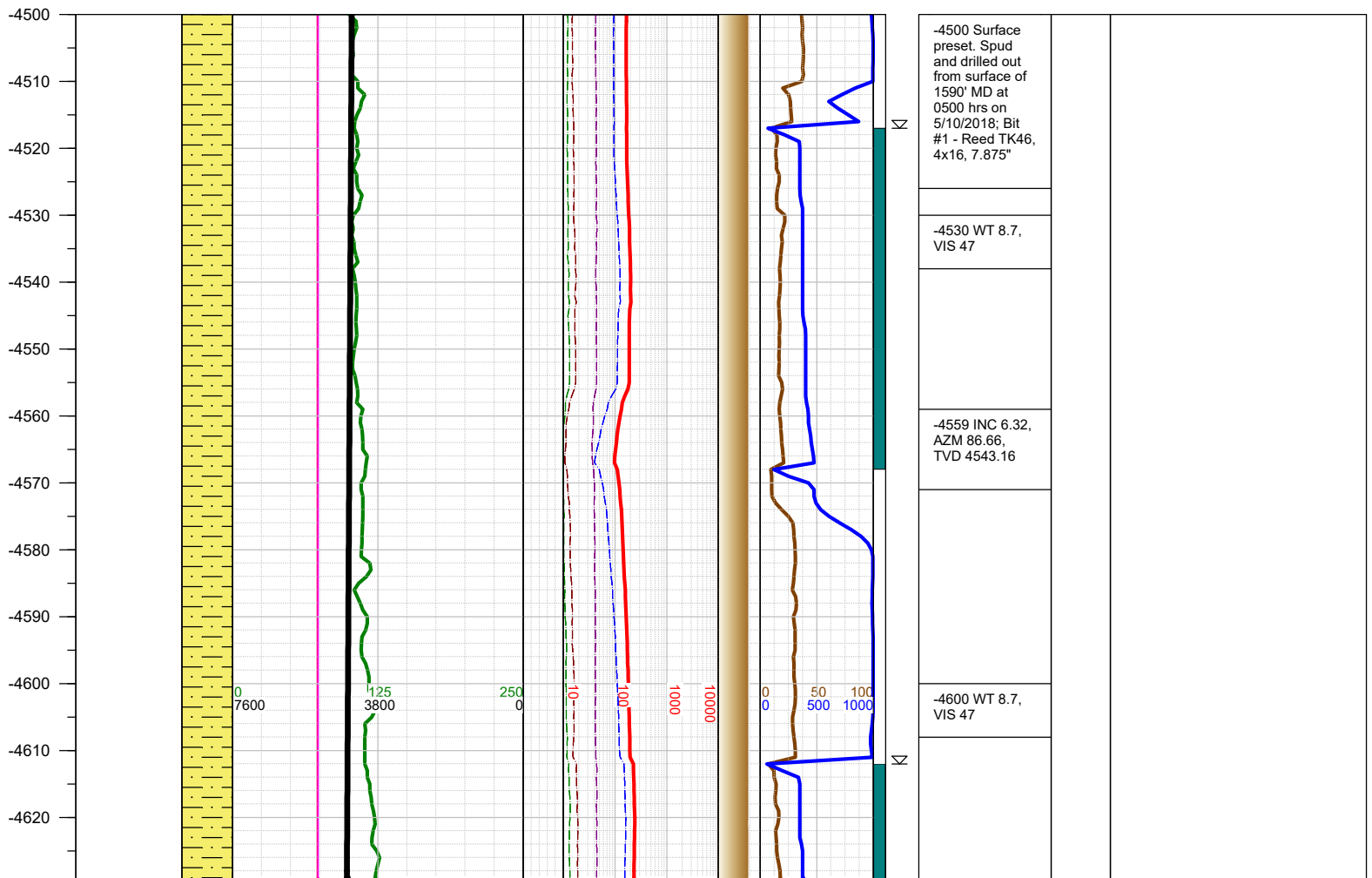
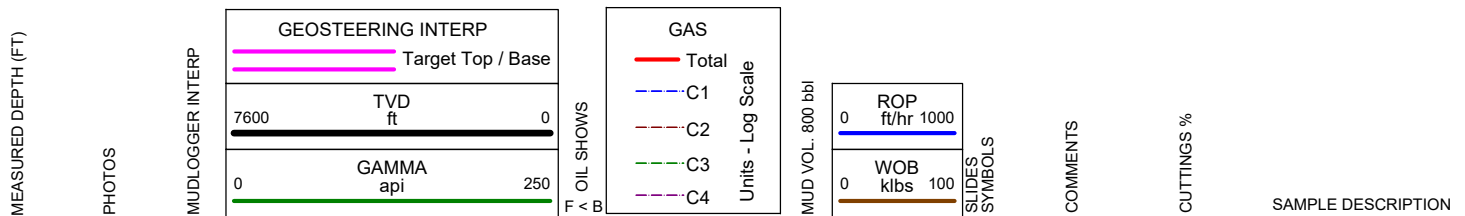
COUNTY: Weld
STATE: Colorado
GROUND ELEVATION: 5031'
KELLY BUSHING: 5060'
DRILLING FLUID: OBM
TVD VS. MD: 6185' / 10450'
SPUD DATE: May 10, 2018
TD DATE: May 11, 2018

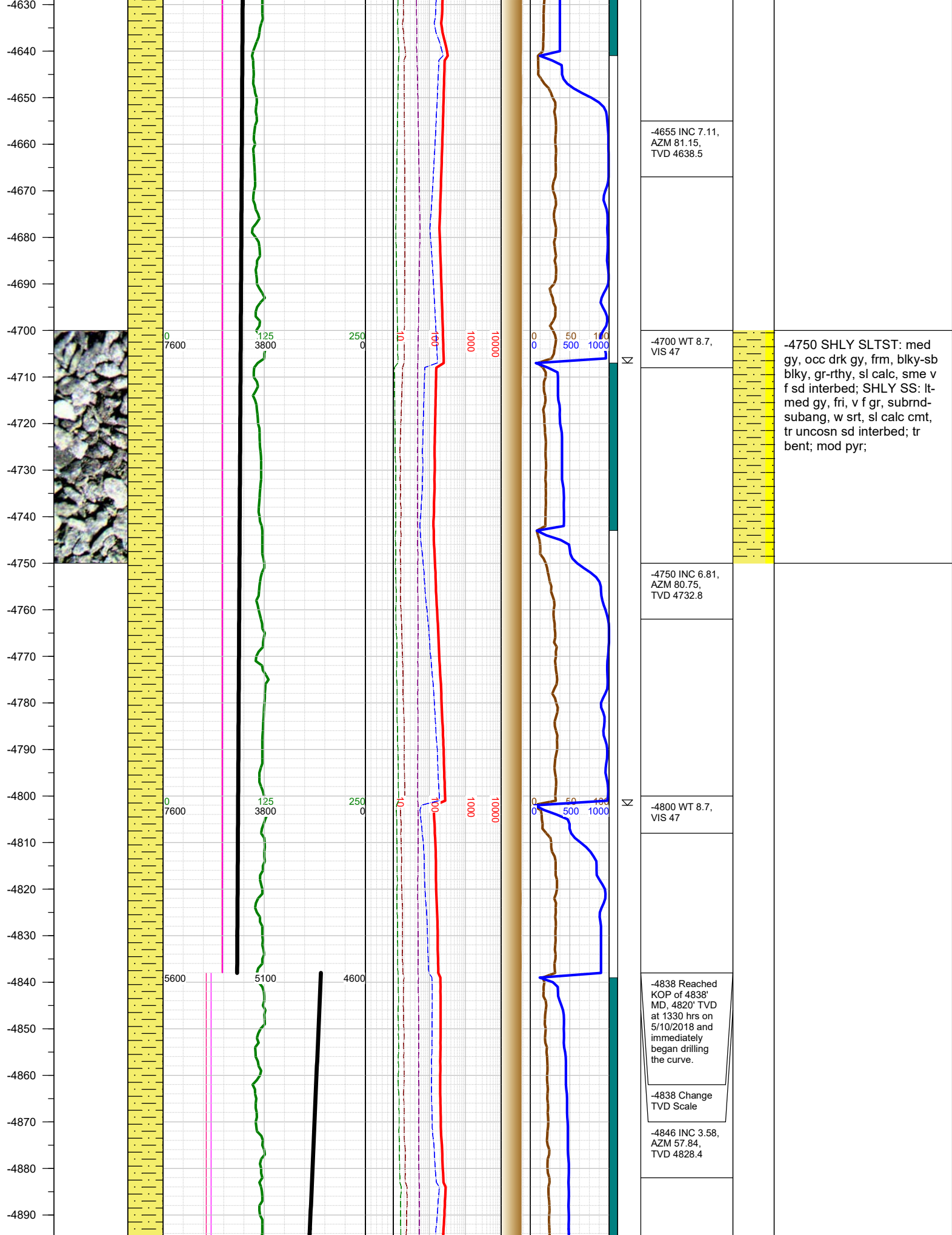
DEPTHS LOGGED: 4500' - 10450'
DATES LOGGED: May 10, 2018 - May 11, 2018
GEOLOGISTS: Blake Eatherton, Levi Heintzelman
SCALE: 5" = 100'

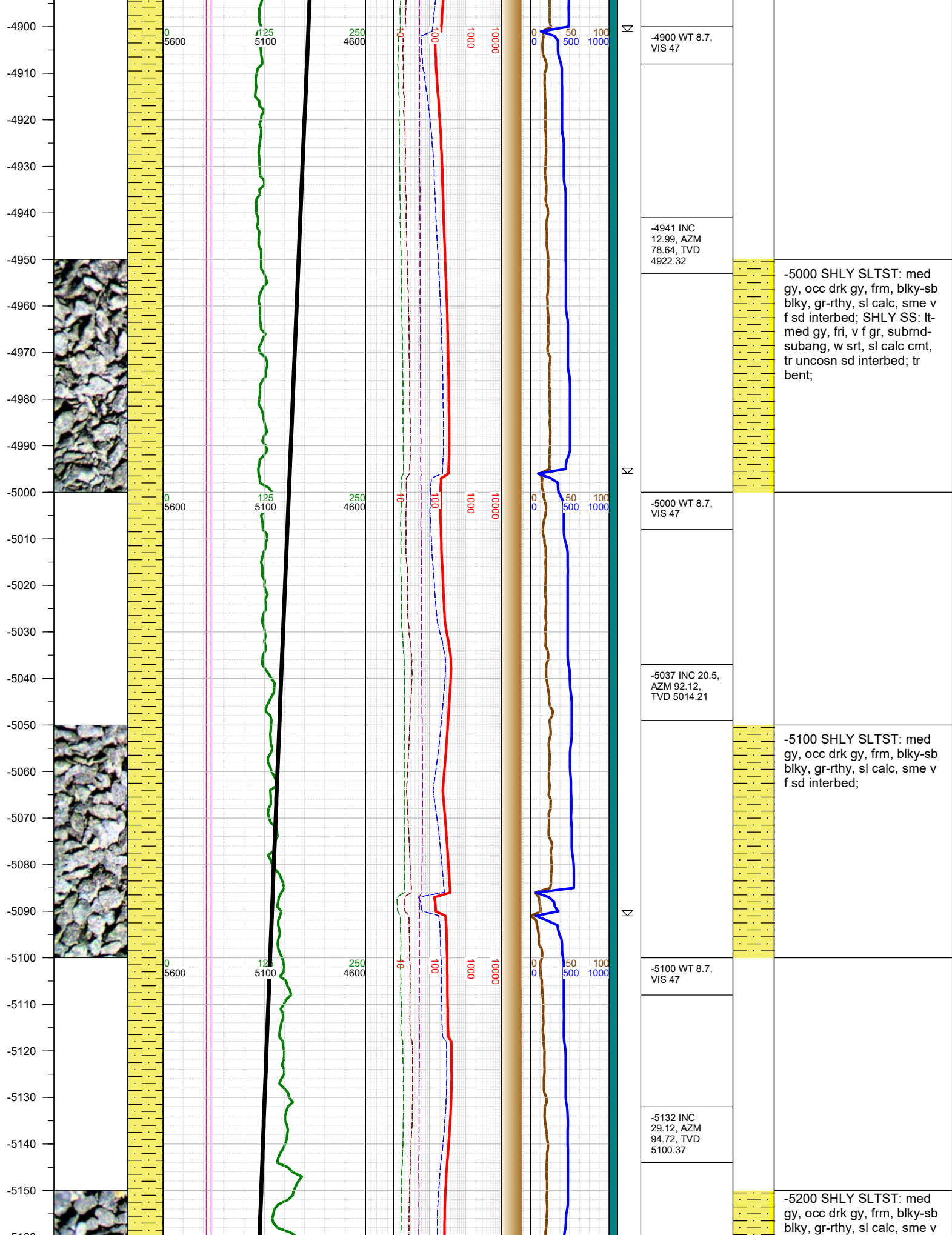
LEGEND

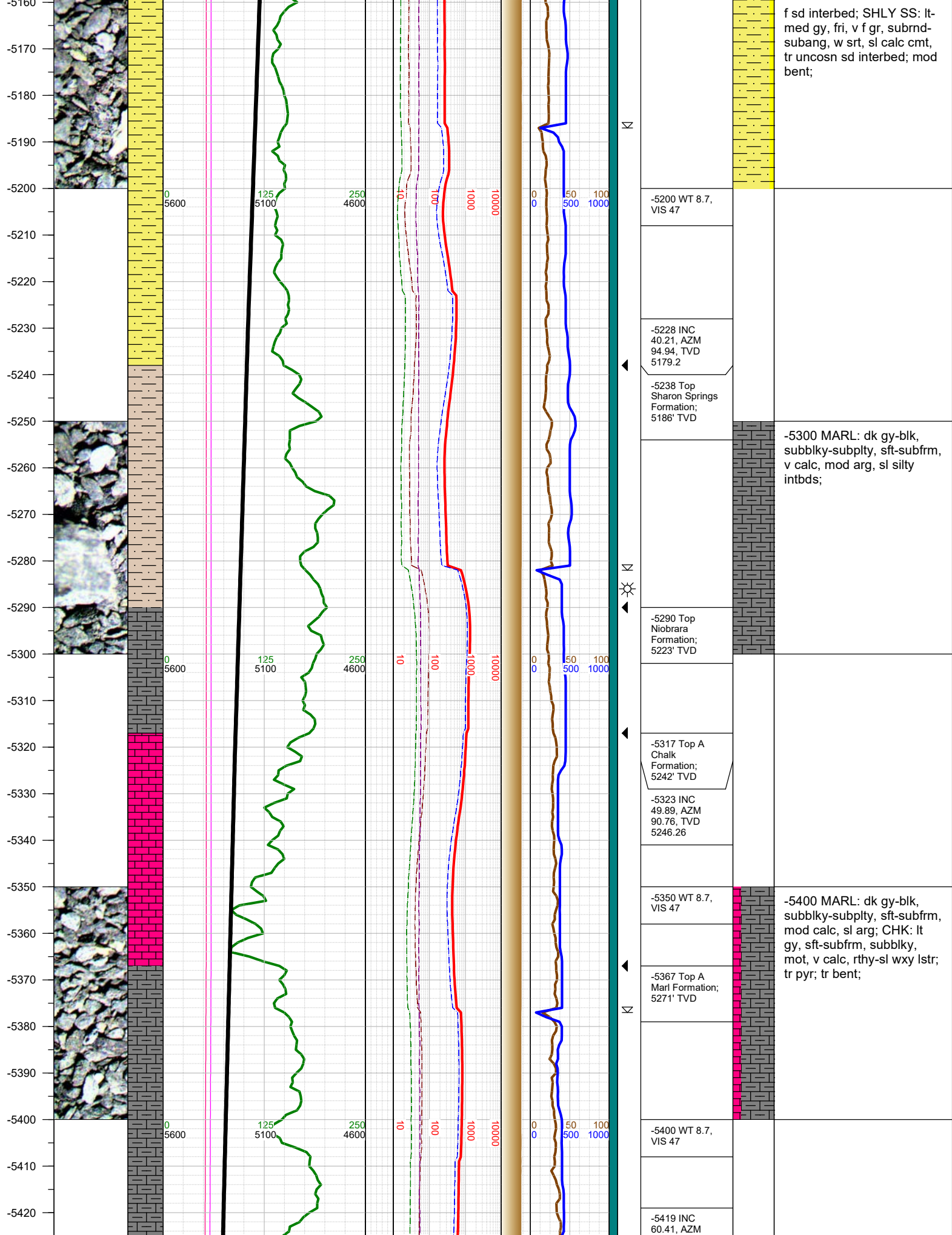


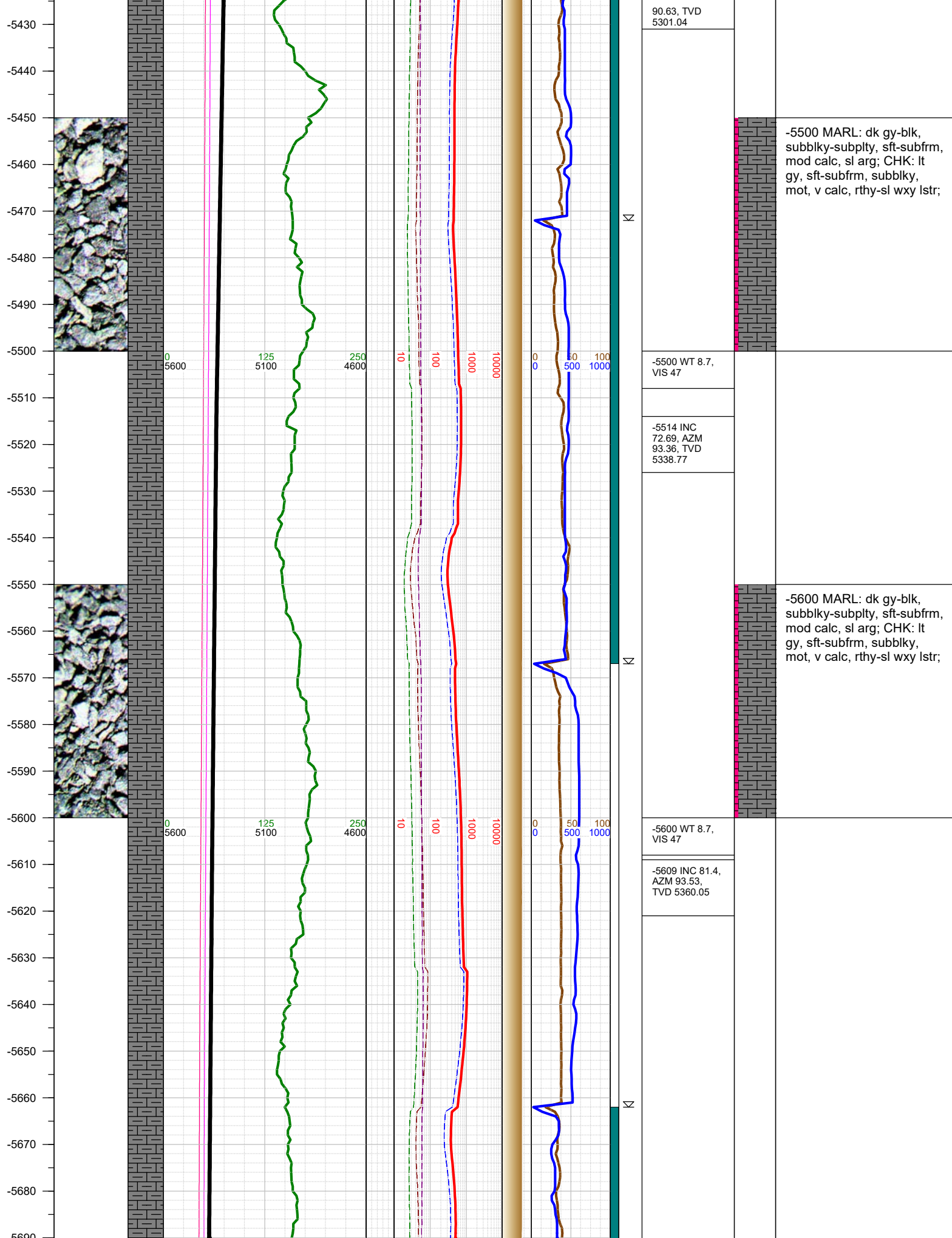
FORMATION CONNECTION MIDNIGHT NEW BIT GAS SHOW FAULT

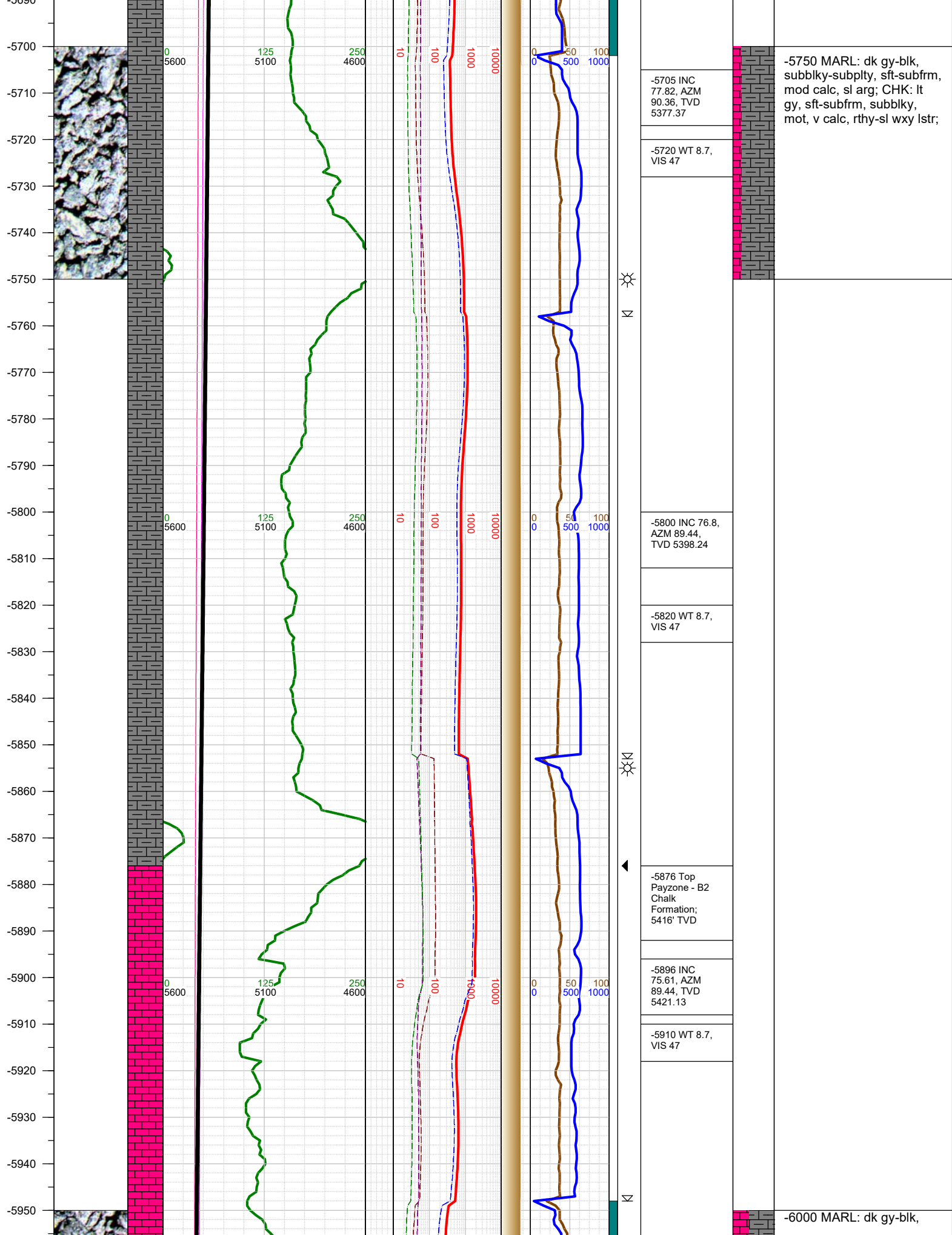


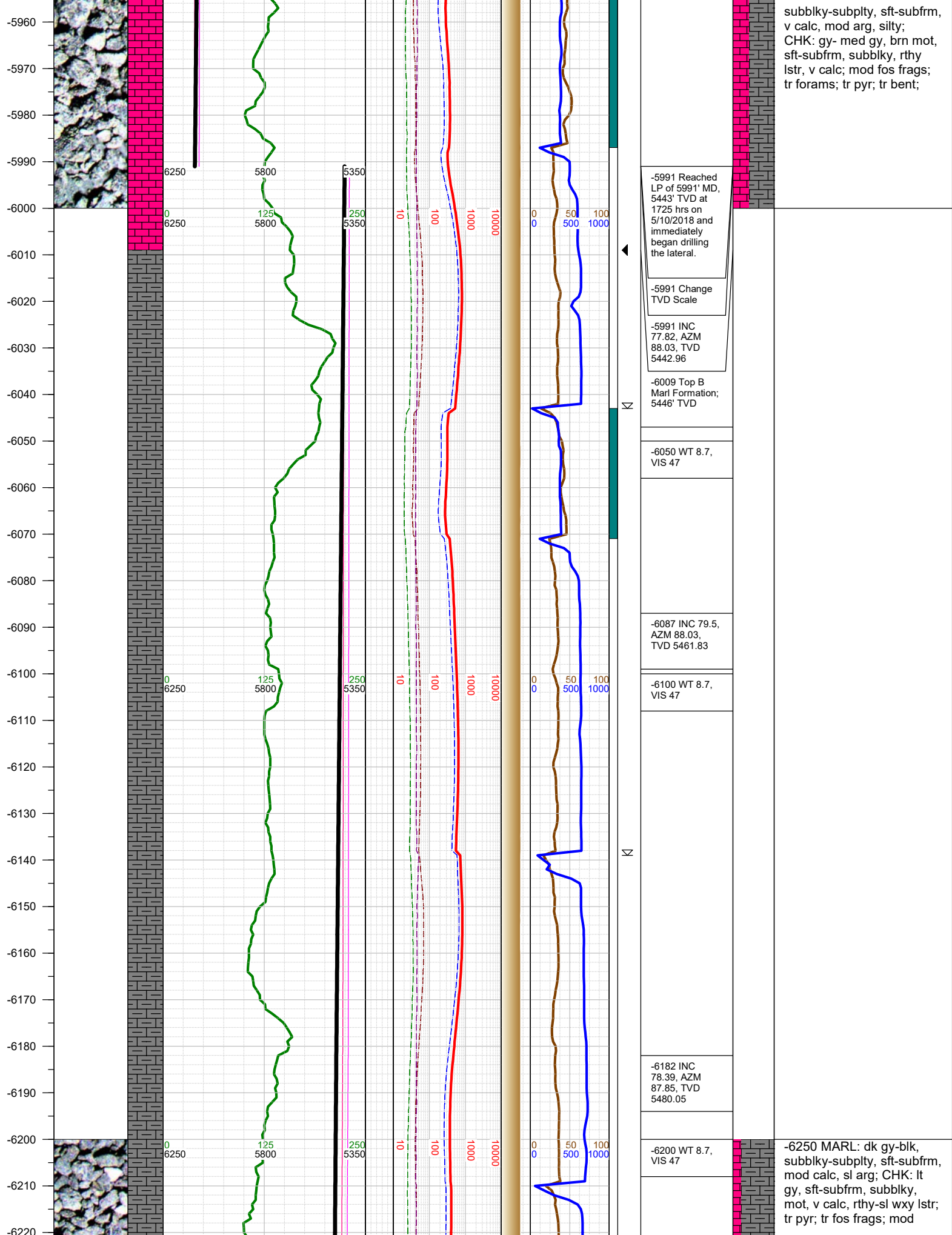


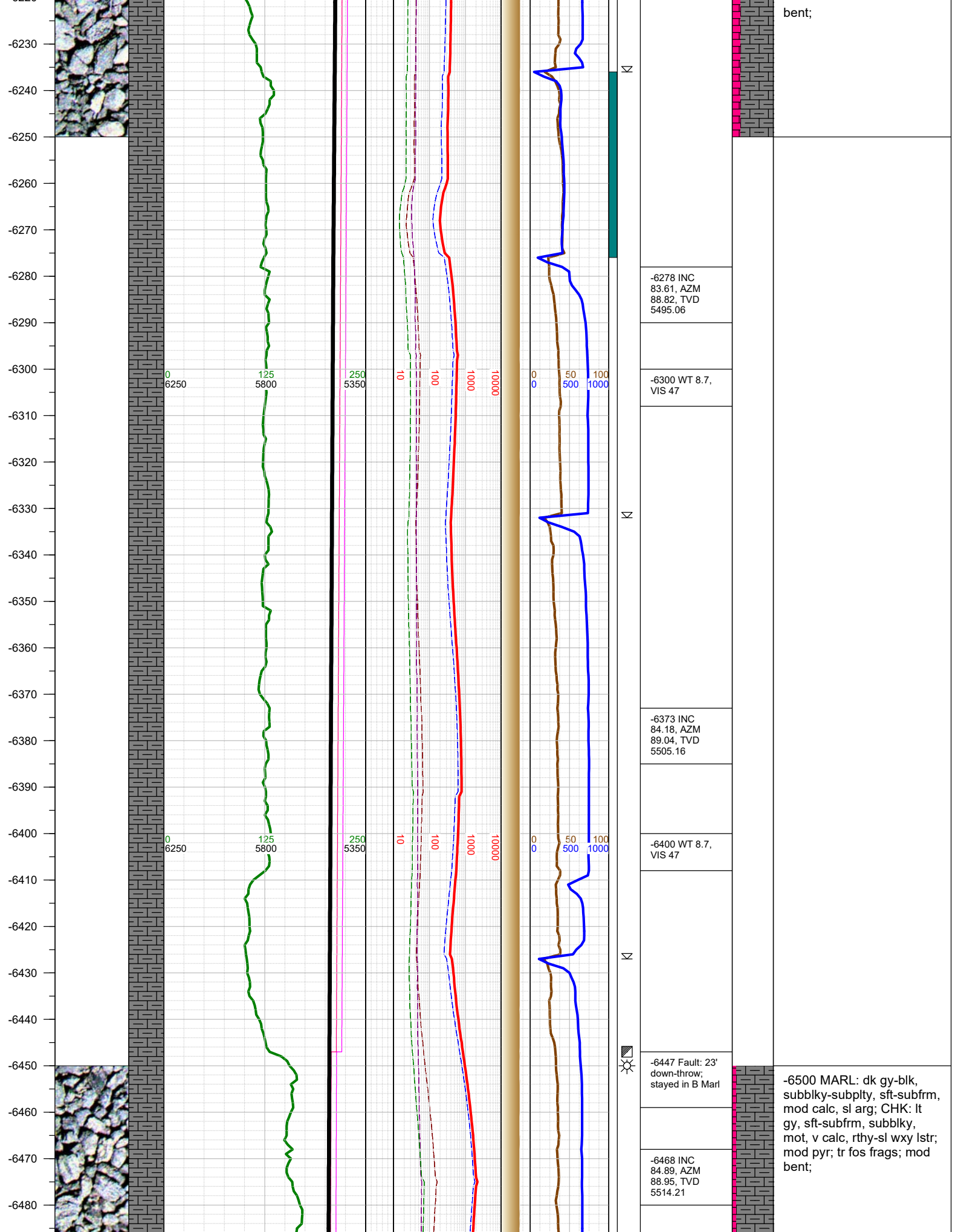


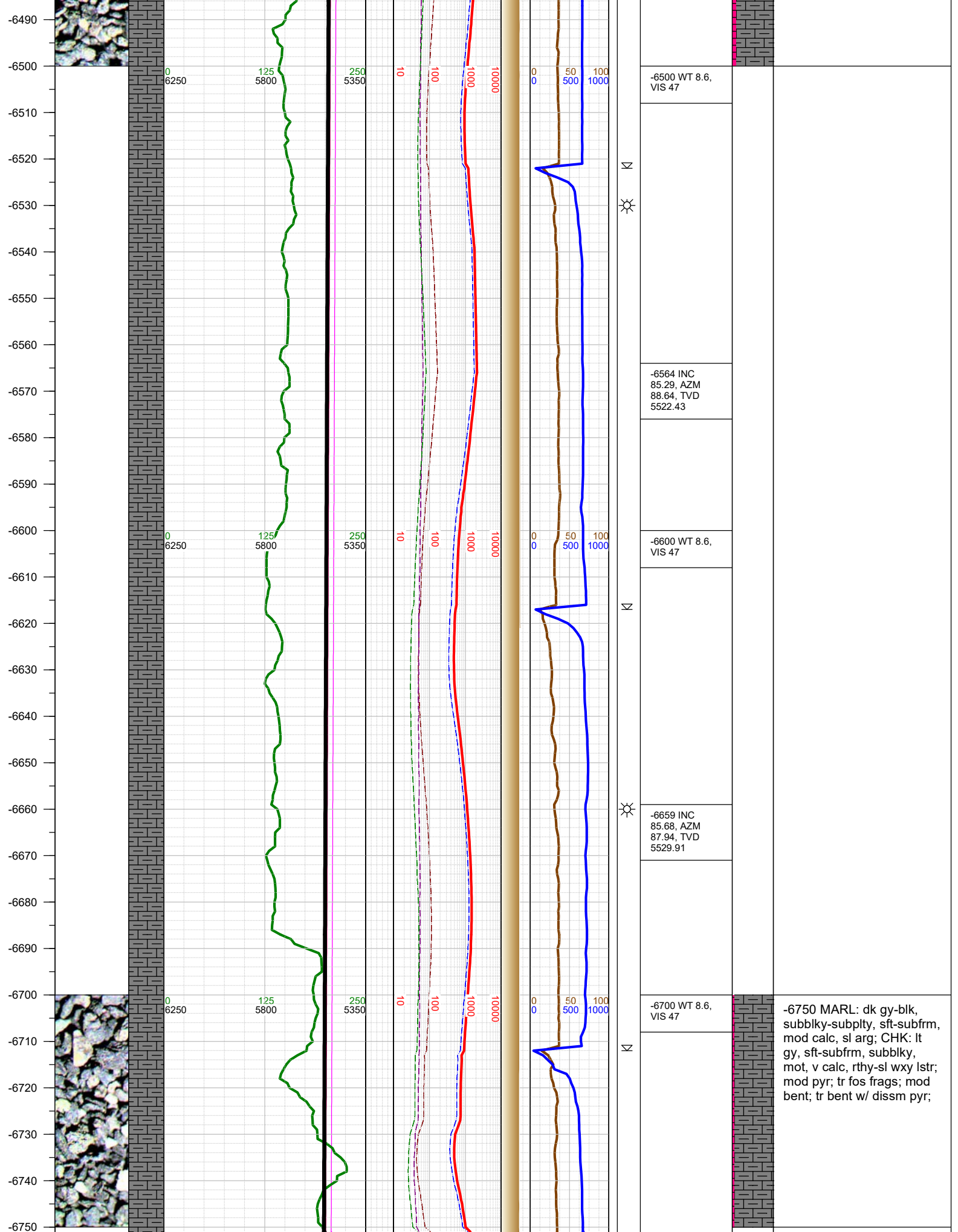


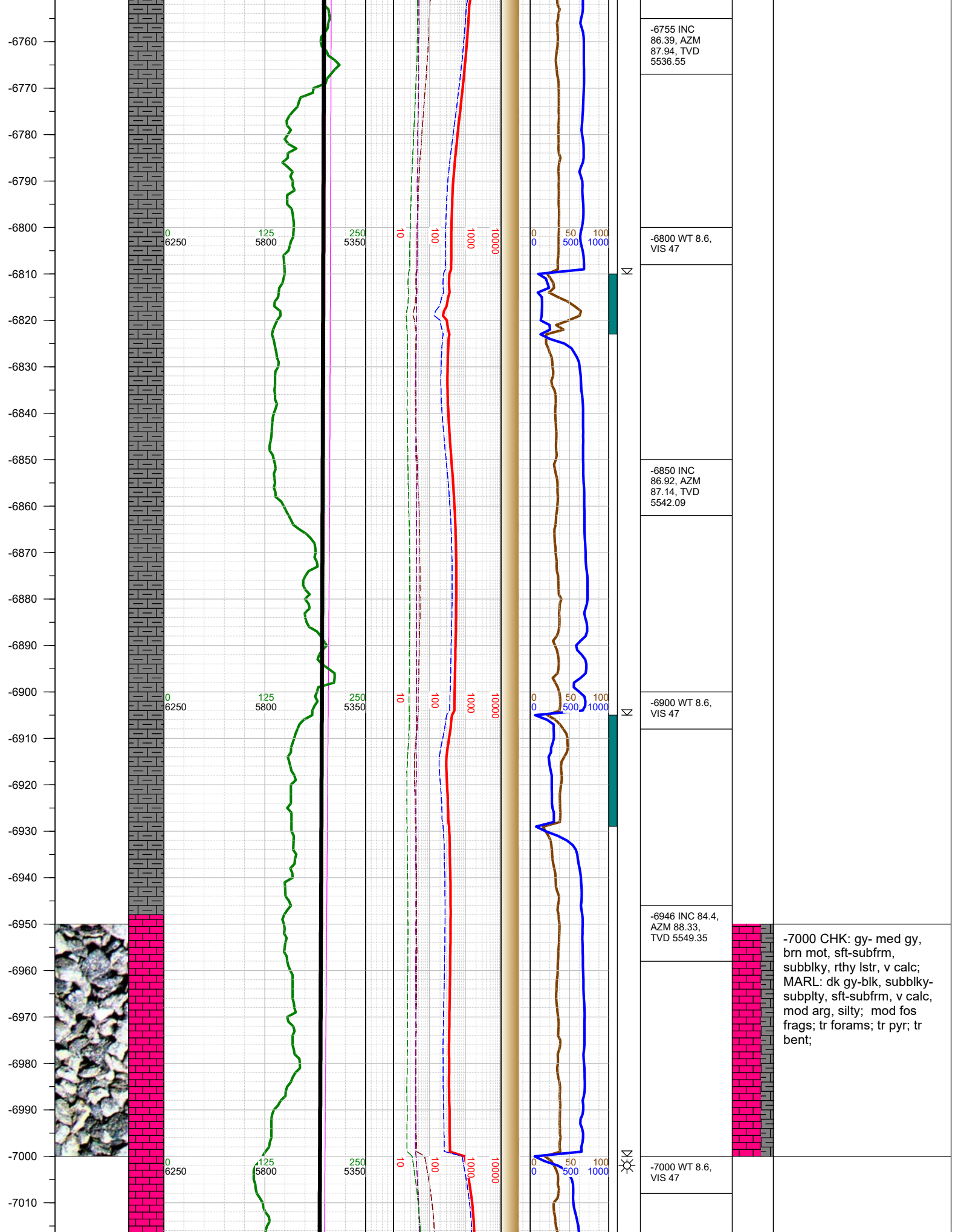


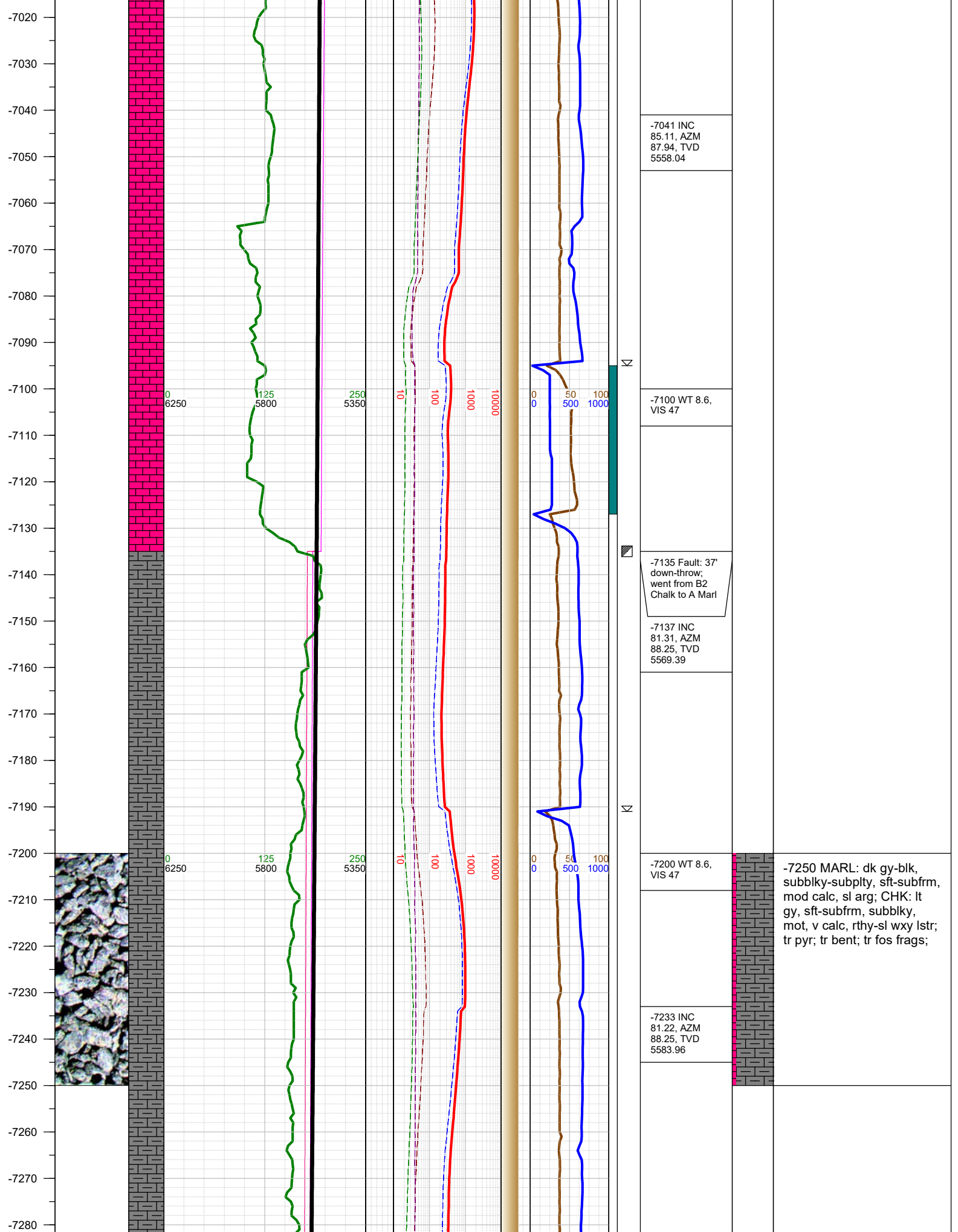


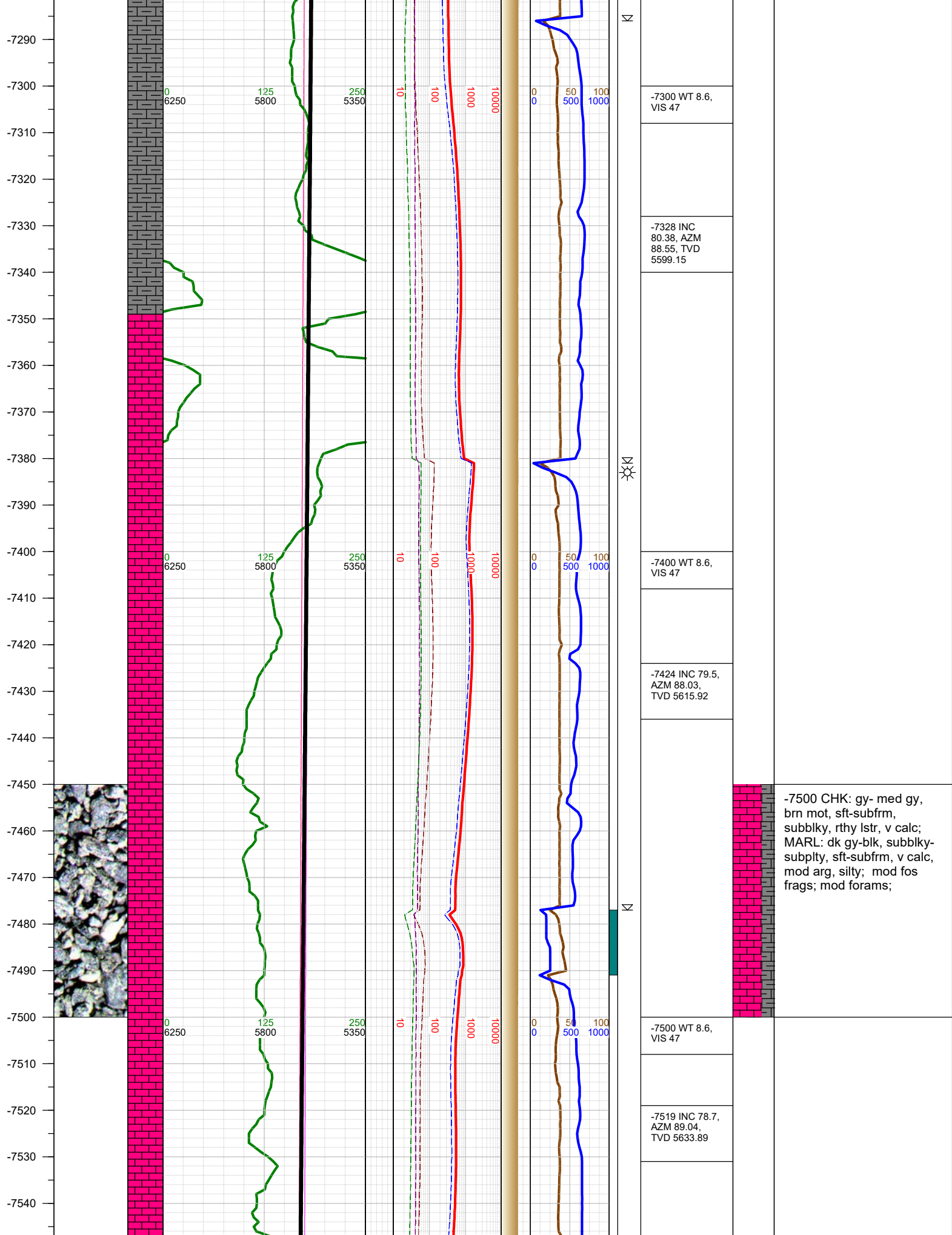


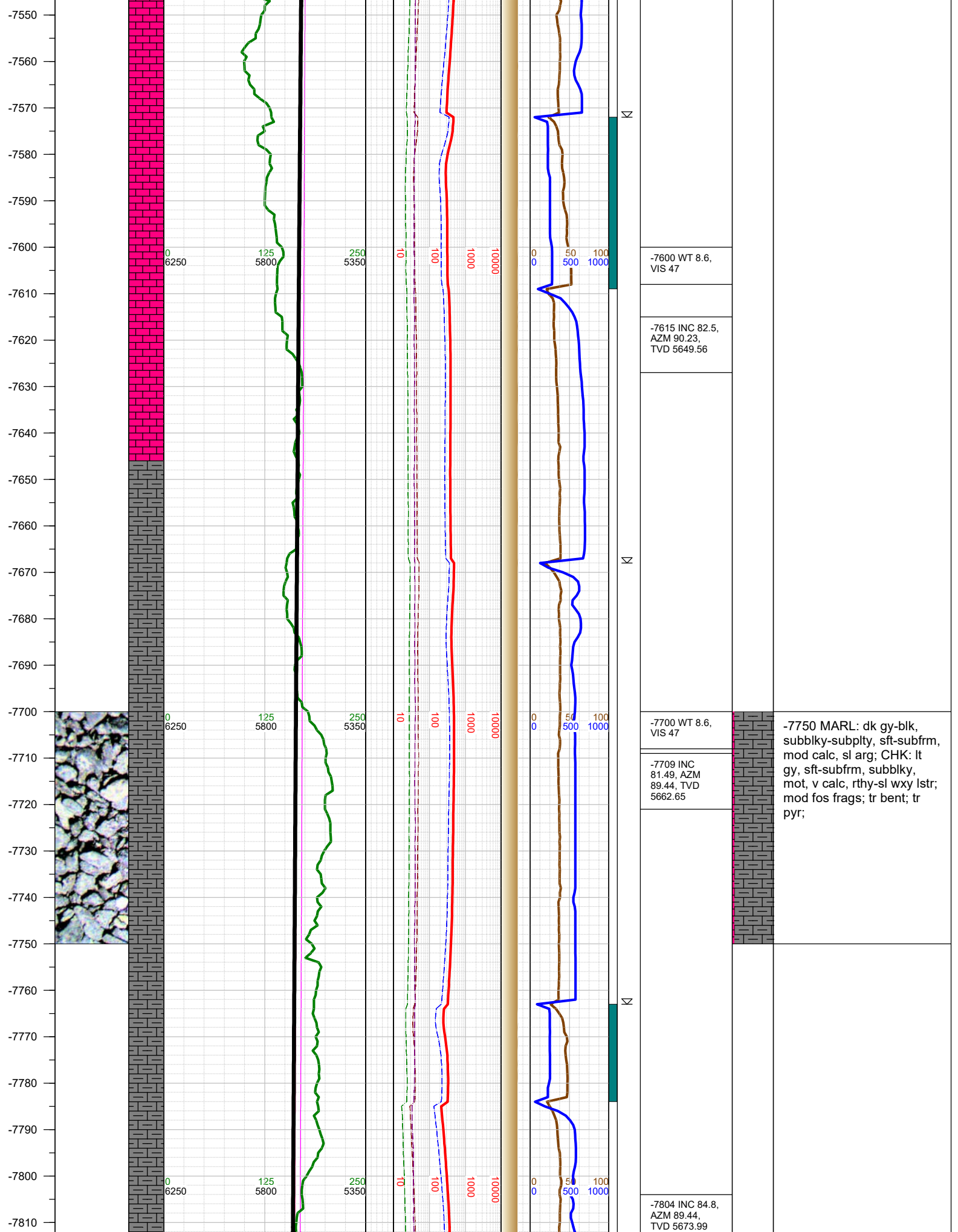


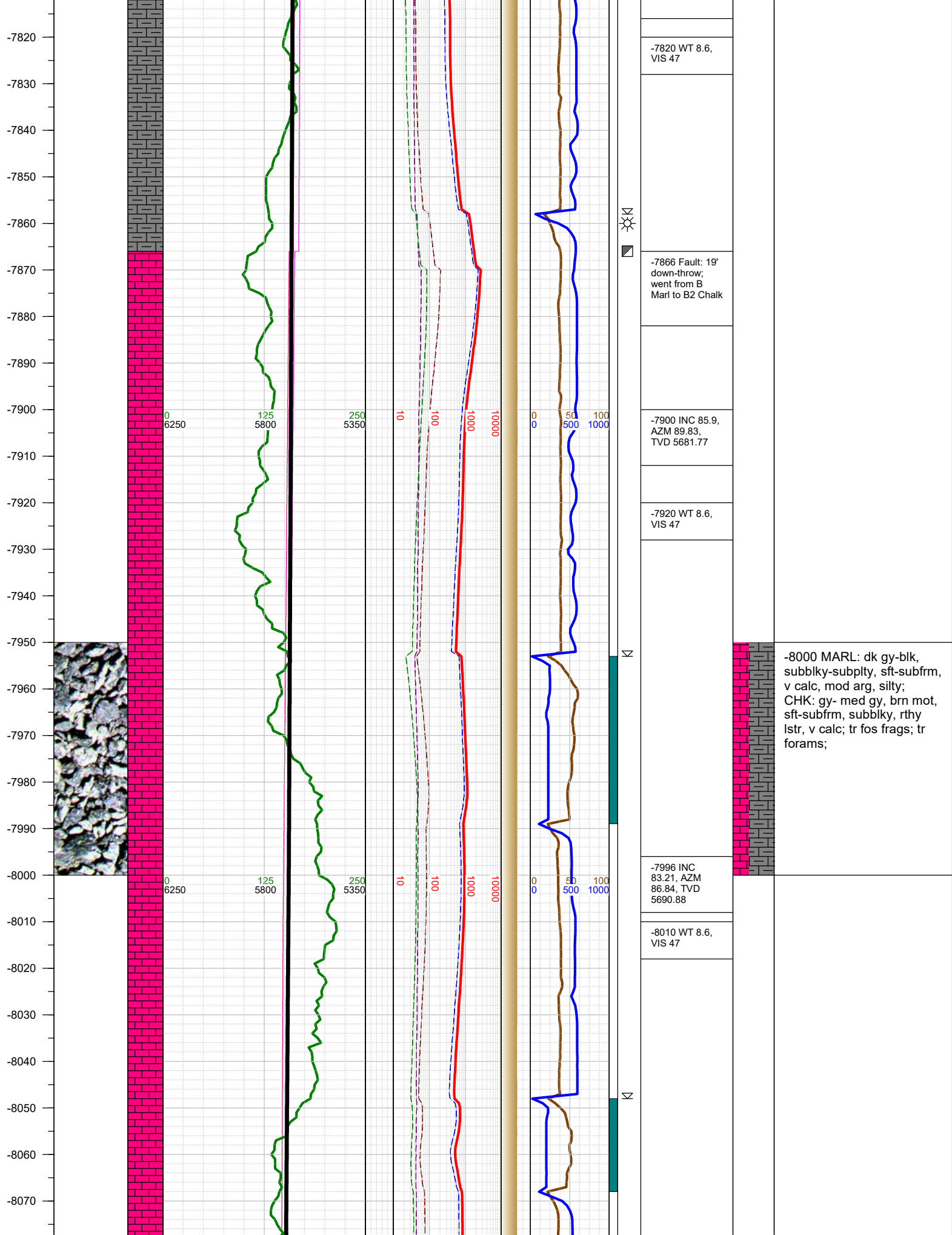


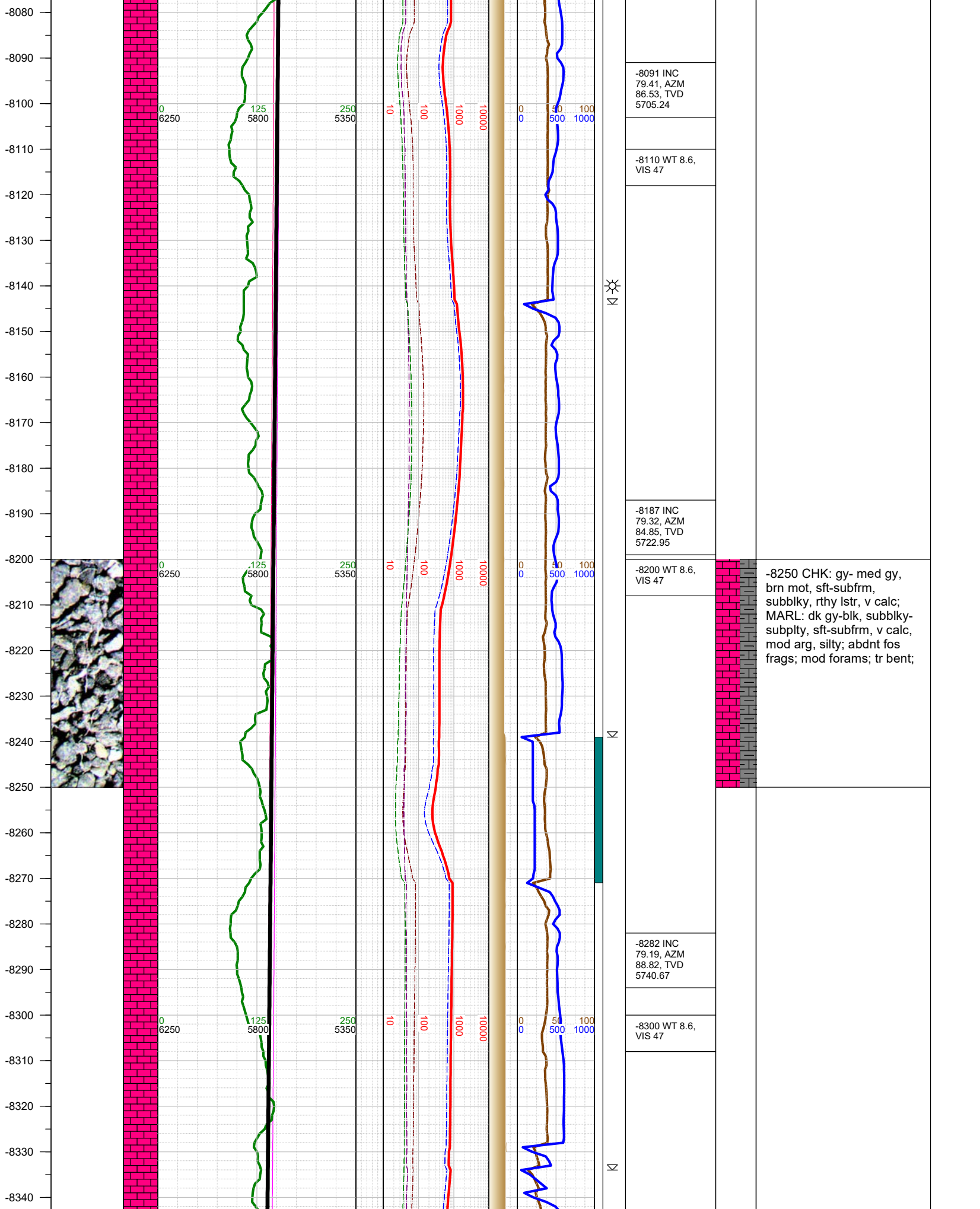


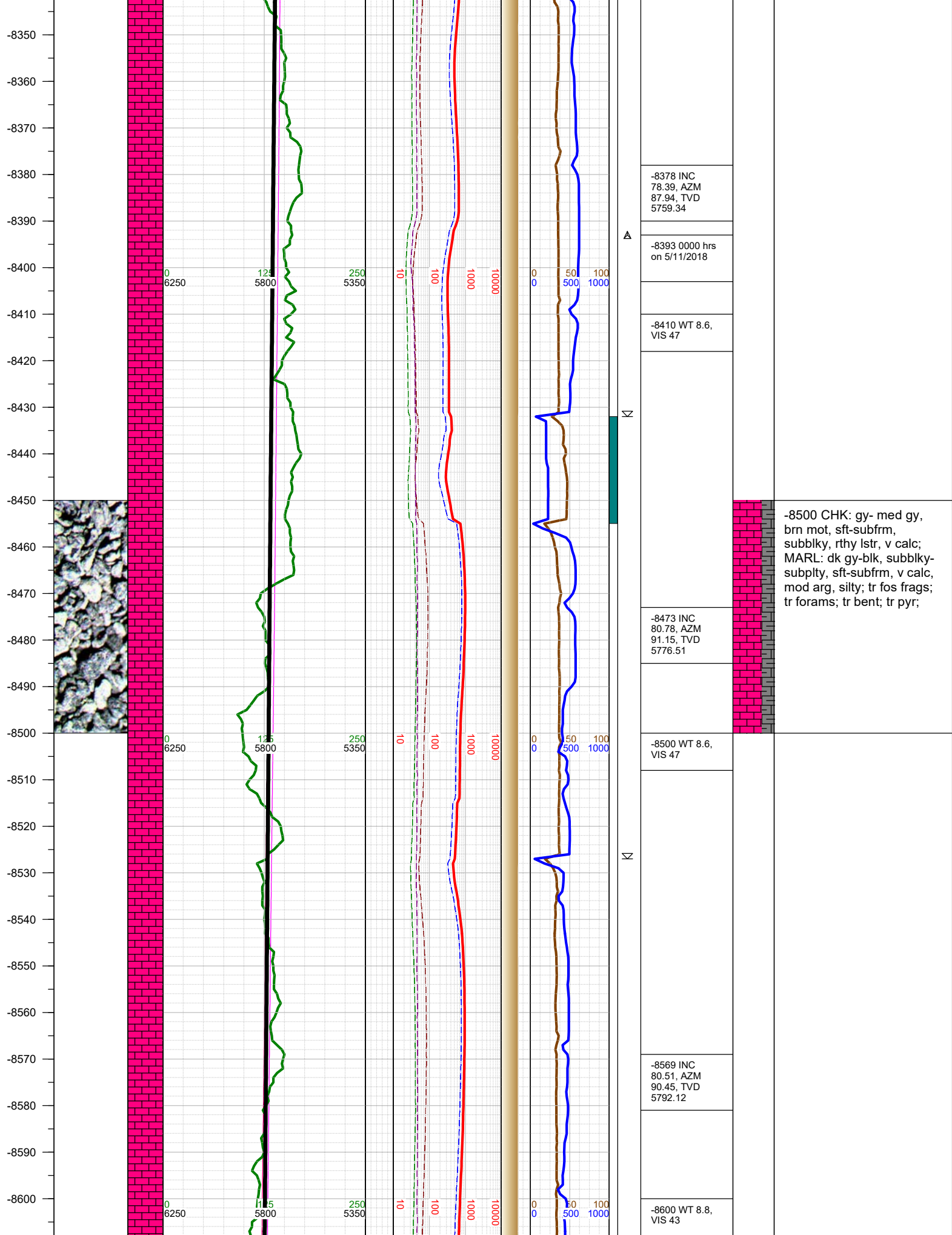


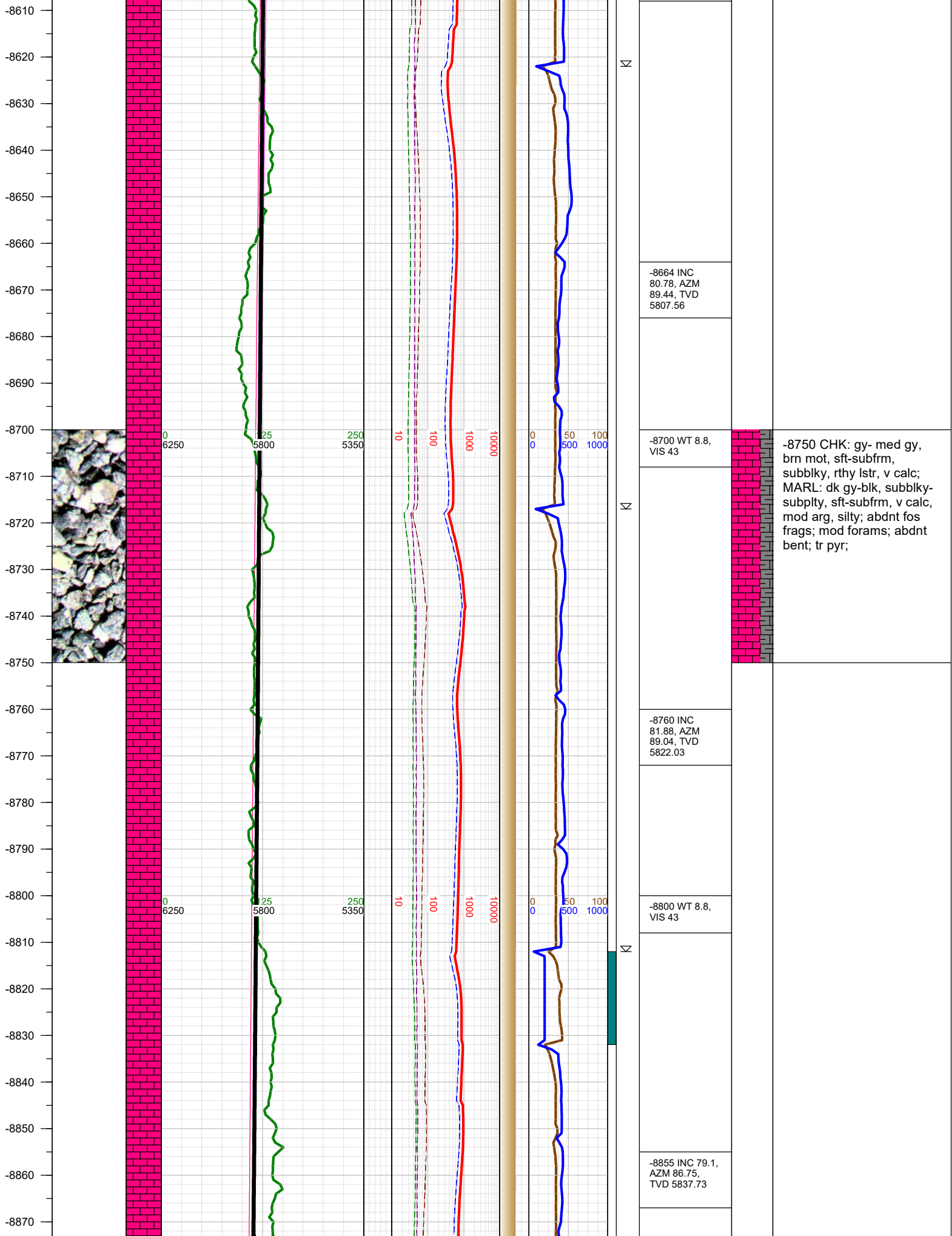


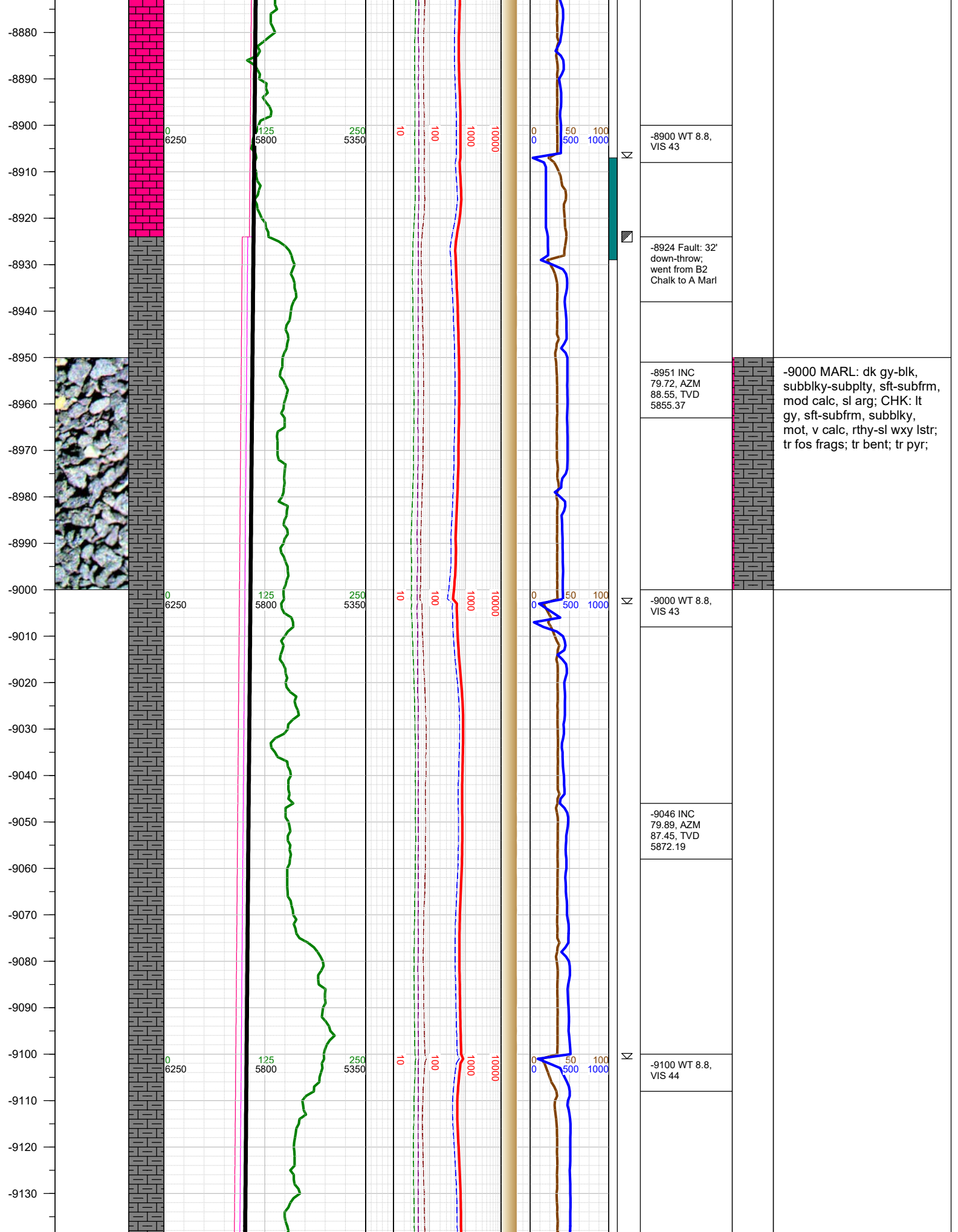


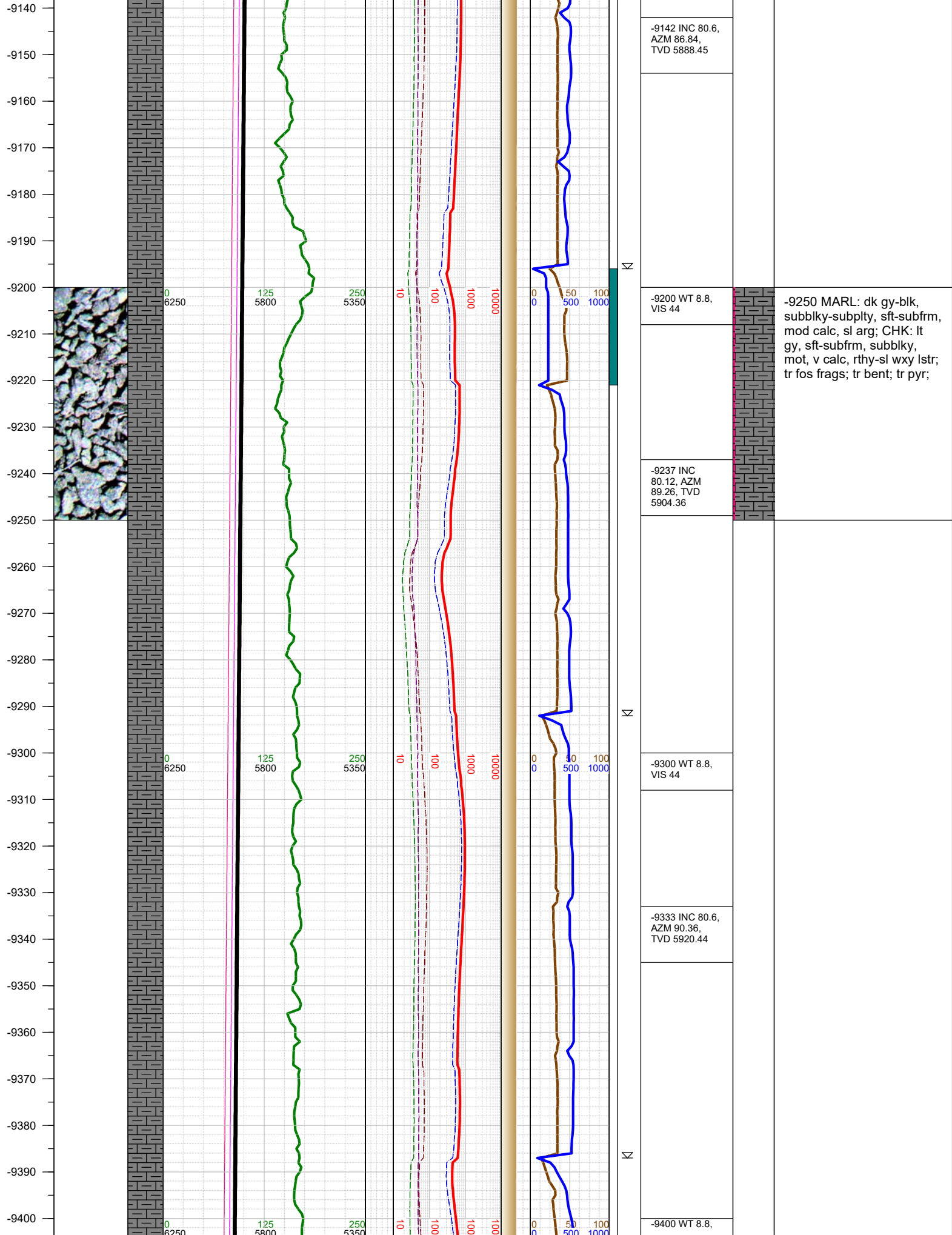


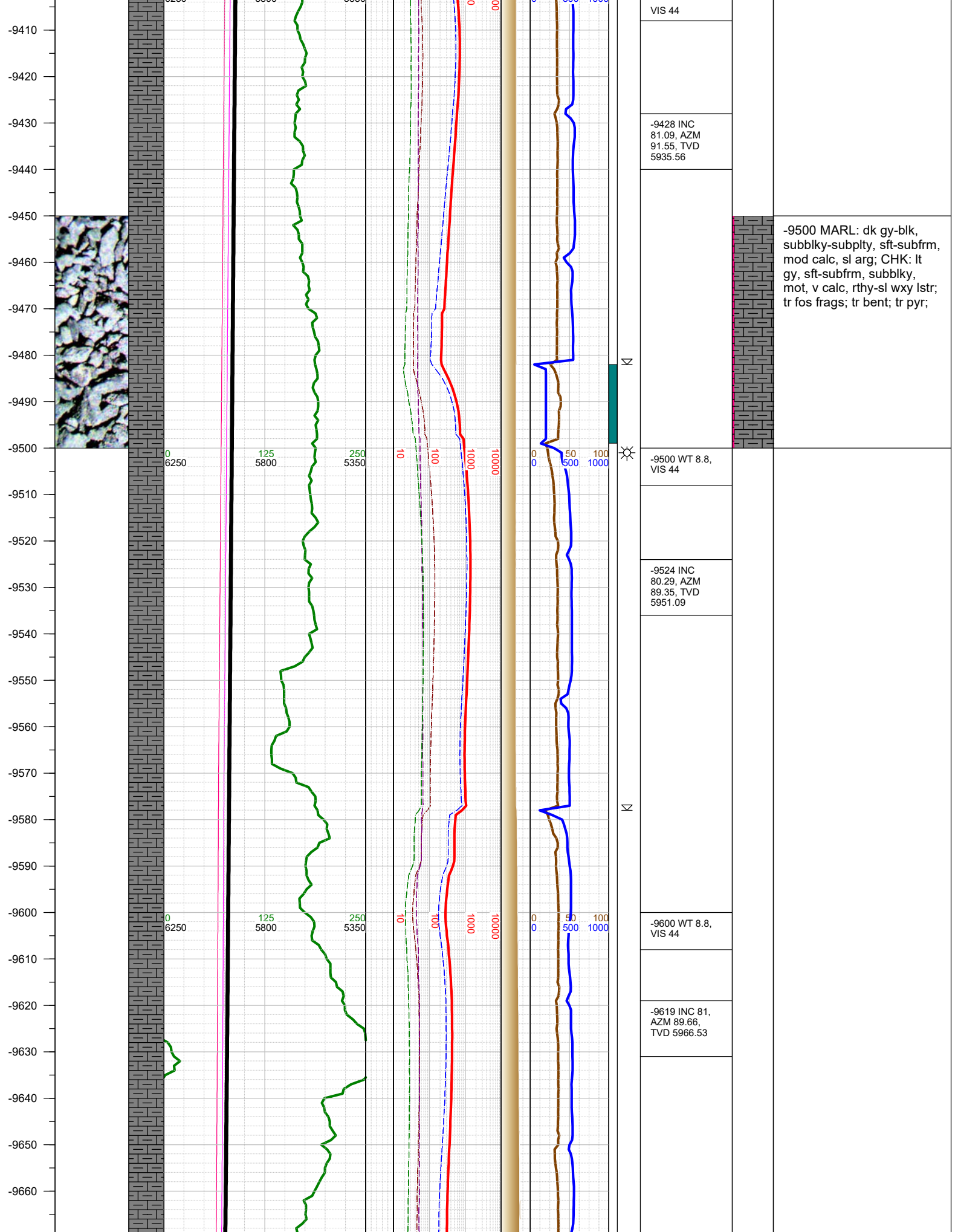


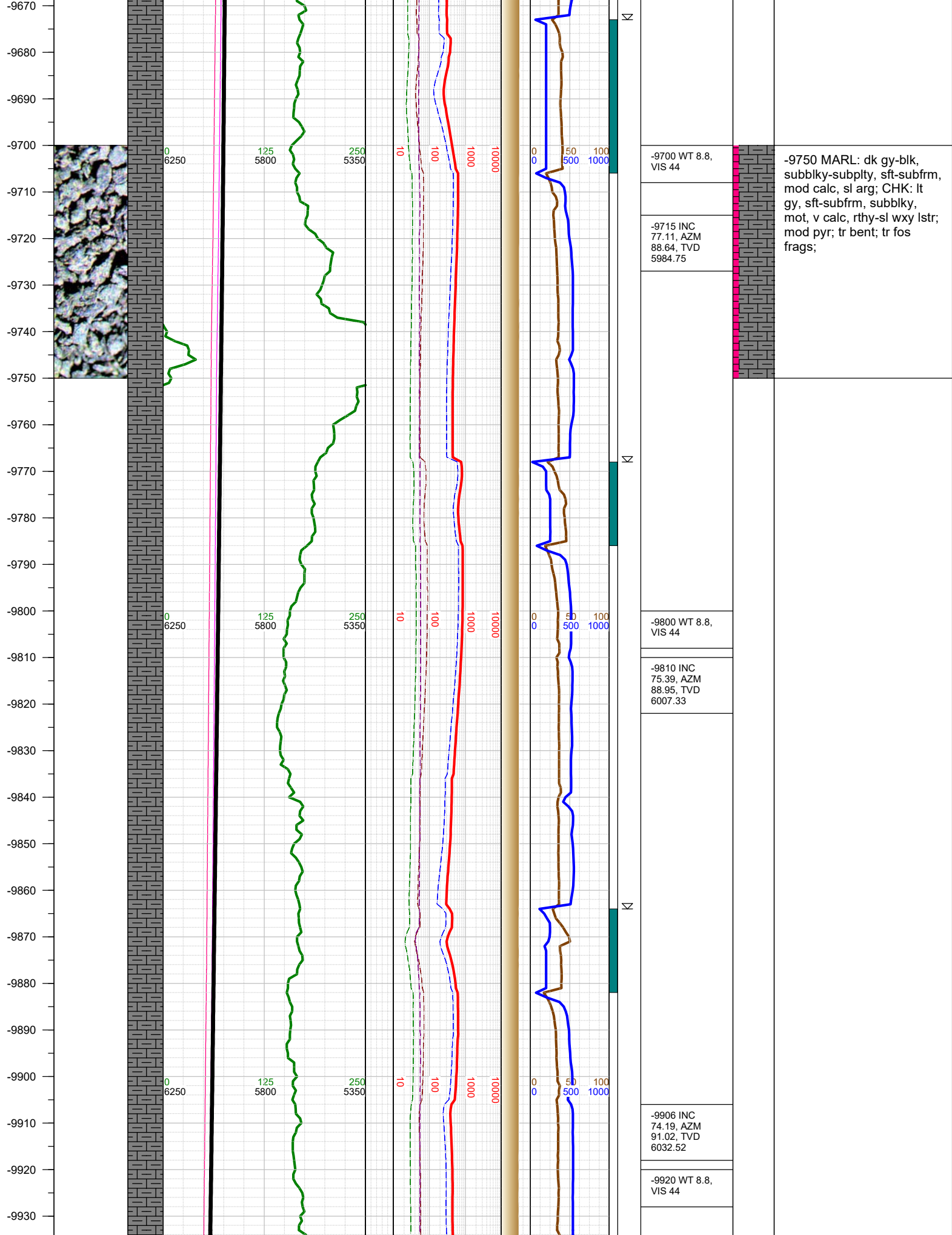


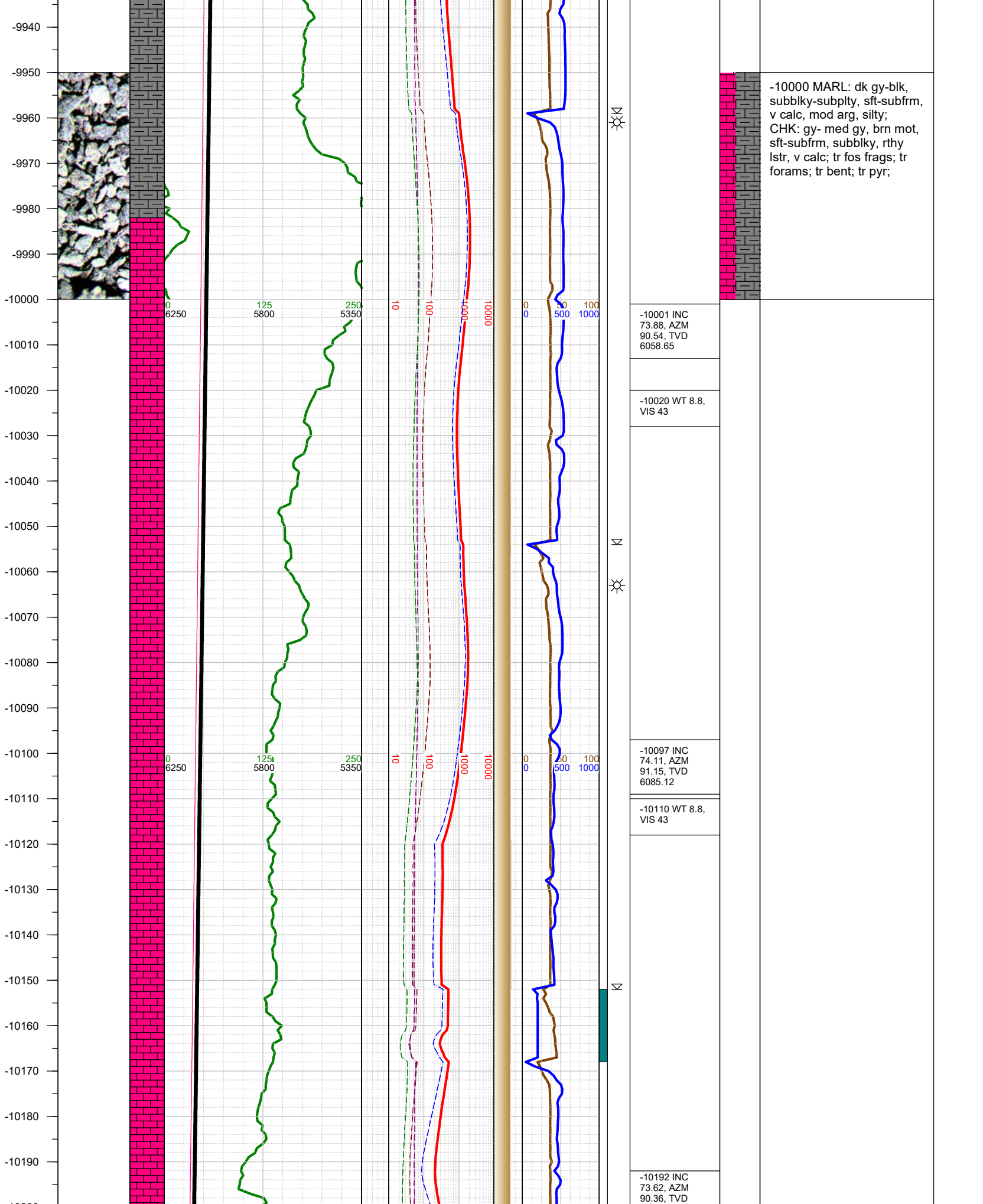


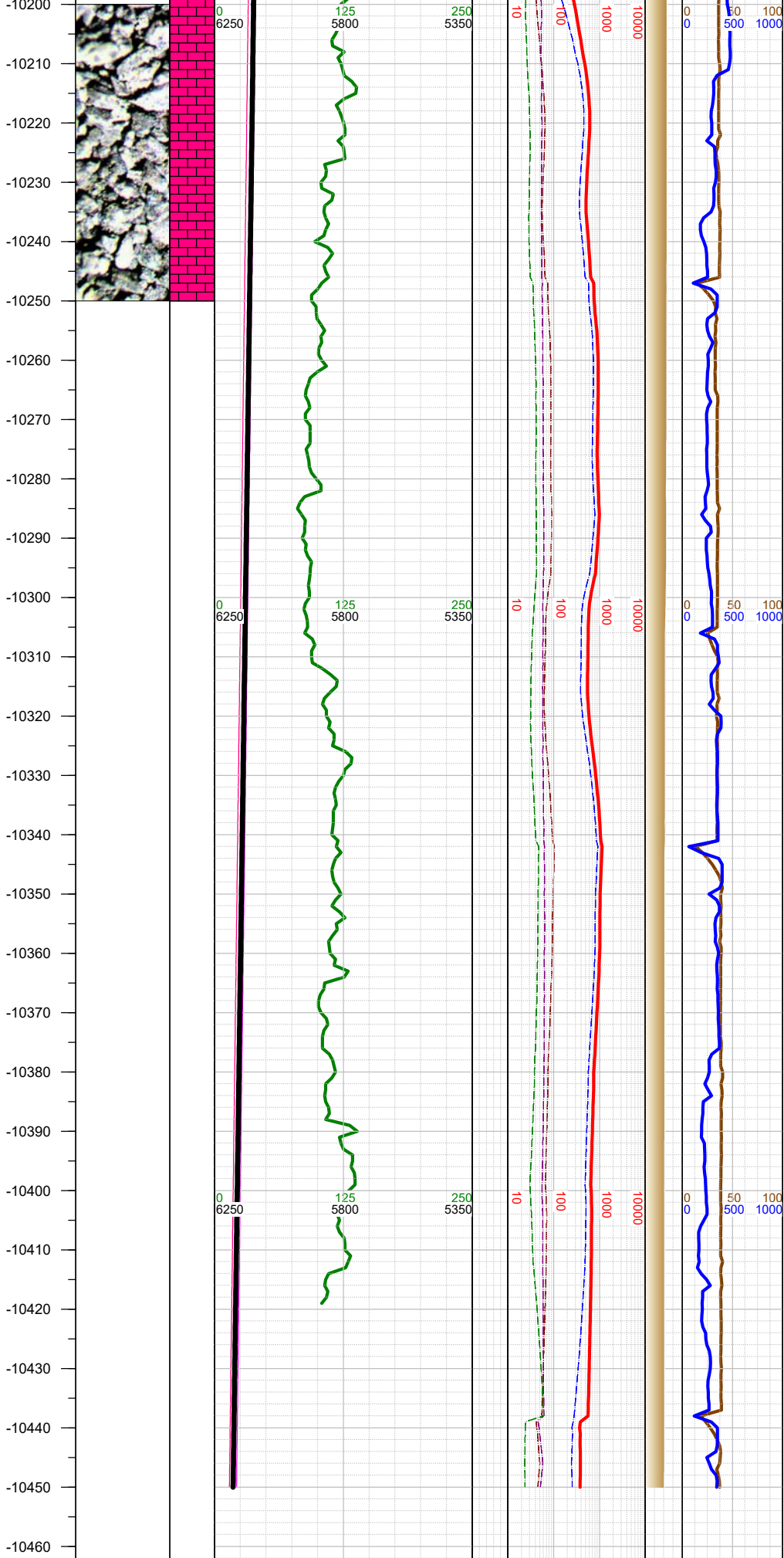












6111.52

-10210 WT 8.8,
VIS 43

-10288 INC
73.4, AZM
90.23, TVD
6138.77

-10300 WT 8.8,
VIS 43

-10383 INC
73.22, AZM
90.23, TVD
6166.05

-10400 WT 8.8,
VIS 43

-10450 Reached
horizontal TD of
10450' MD,
6185' TVD at
0720 hrs on
5/11/2018.

-10250 CHK: gy- med gy,
brn mot, sft-subfrm,
subblky, rthy lstr, v calc;
MARL: dk gy-blk, subblky-
subply, sft-subfrm, v calc,
mod arg, silty; tr fos frags;
mod forams; tr bent; tr pyr;

-10470

TOTAL DEPTH = 10450'

Thank you for using Earth Science Agency