



Kerr-McGee Oil & Gas Onshore LP

A subsidiary of Anadarko Petroleum Corporation

1099 18th Street
Denver, CO 80202
720-929-6000

July 16, 2018

Julie Murphy
Director, Colorado Oil and Gas Conservation Commission
Department of Natural Resources
The Chancery Building
1120 Lincoln Street, Suite 801
Denver, CO 80203

Re: **30 Day Certification Letter - 318A.e**
BEIERLE 26-12HZ (Doc No. 401657824)
Township 1 North, Range 66 West
Section 26: NWNE
Unit Acreage: 480 Acres
Unit Spacing: 01N-R66W; SEC 14: S2SE;
01N-R66W; SEC 23: E2;
01N-R66W; SEC 26:N2NE
Weld County, Colorado

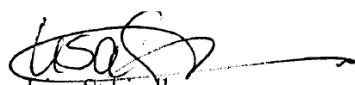
Dear Director Murphy:

Kerr-McGee Oil and Gas Onshore LP (“KMG”) hereby certifies that a thirty (30) day notice has been given by certified mail to all mineral owners in the proposed wellbore spacing unit. We have not received any objections to such well location, proposed spacing unit, or additional producing formation. KMG hereby respectfully requests approval of this boundary well.

If there are any questions or issues regarding this permit, please contact Lisa Schindler at (720) 929-3091.

Sincerely,

Kerr-McGee Oil and Gas Onshore LP

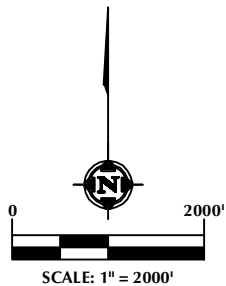
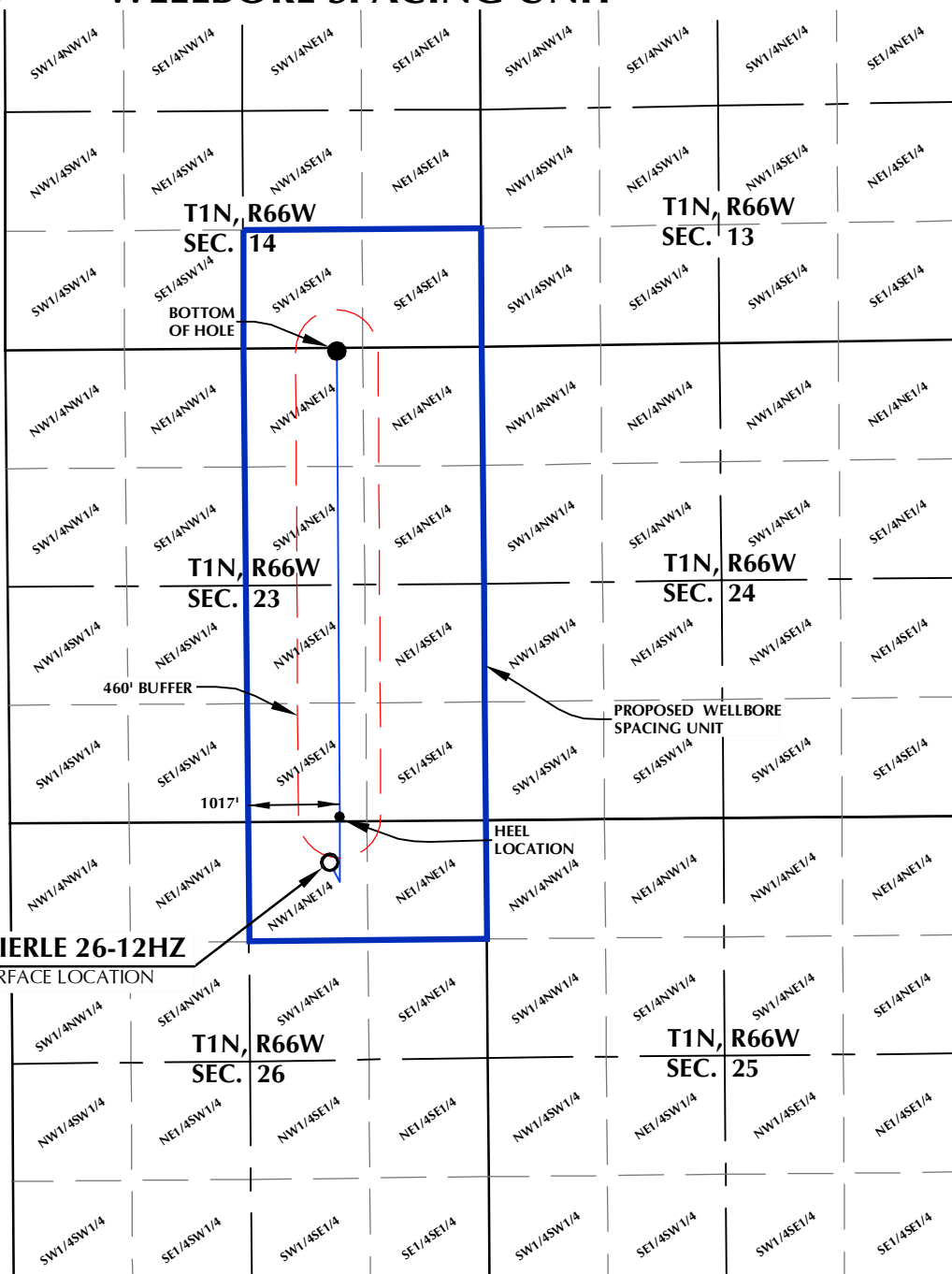

Lisa Schindler
Sr. Regulatory Analyst

Enclosure

BEIERLE 26-12HZ WELLBORE SPACING UNIT

DISTANCE FROM COMPLETED
PORTION OF WELLBORE TO
NEAREST UNIT BOUNDARY= 1017'

SURFACE LOCATION: NAD 83
GROUND ELEVATION= 5120.8'
LATITUDE= 40.028280°
LONGITUDE= -104.741189°
LATITUDE= 40°01'41.807"
LONGITUDE= -104°44'28.279"
HEEL LOCATION: NAD 83
LATITUDE= 40.029674°
LONGITUDE= -104.740785°
LATITUDE= 40°01'46.825"
LONGITUDE= -104°44'26.825"
BOTTOM HOLE LOCATION: NAD 83
LATITUDE= 40.043911°
LONGITUDE= -104.740734°
LATITUDE= 40°02'38.080"
LONGITUDE= -104°44'26.642"



BEIERLE 26-12HZ
SURFACE LOCATION

NOTES:

1. DRAWING LATITUDE AND LONGITUDE COORDINATES ARE NAD 83 (2011)(EPOCH:2010).
2. ELEVATION BASED ON NAVD88 (GEOID12B).
3. BASIS OF BEARING DERIVED FROM COLORADO COORDINATE SYSTEM OF 1983 NORTH ZONE.
4. ALL MEASURED DISTANCES ARE GRID.
COMBINED SCALE FACTOR: .99972212 CALCULATED FROM THE N. 1/4 CORNER OF SECTION 26, T1N, R66W.

WELL PAD - BEIERLE 2-26HZ

BEIERLE 26-12HZ
WELLBORE SPACING UNIT
460' FNL & 1744' FEL NWN (SURFACE)
LOCATED IN SECTION 26
48' FSL & 1631' FEL SWSE (HEEL)
31' FNL & 1616' FEL NWN (BOTTOM)
LOCATED IN SECTION 23
T1N, R66W, 6TH P.M.
WELD COUNTY, COLORADO

**Kerr-McGee Oil &
Gas Onshore L.P.**
1099 18th Street
Denver, Colorado 80202



CONSULTING, LLC

SHERIDAN OFFICE
1095 Saberton Avenue
Sheridan, Wyoming 82801
Phone 307-674-0609

LOVELAND OFFICE
1635 Foxtrail Drive, Suite 204
Loveland, Colorado 80538
Phone 970-776-4331

DRAFTED BY: MDB	CHECKED BY: RKF
DATE DRAFTED: 5/23/18	DATE SURVEYED: 5/7/18
REVISED:	FILE NAME: 17-102