

# **US ROCKIES WATTENBERG PLANNING**

**WELD-NAD83-UTMFT13N  
1N-66W-26 BEIERLE 2-26HZ PAD  
BEIERLE 26-11HZ**

**Plan A**

**Plan: Permit Rev-1**

SHL Lat/Long: 40.028280/-104.741242  
Survey Program: MWD+IFR

## **Standard Planning Report**

**05 May, 2018**

Project: WELD-NAD83-UTMFT13N  
 Site: 1N-66W-26 BEIERLE 2-26HZ PAD  
 Well: BEIERLE 26-11HZ  
 Wellbore: Plan A  
 Design: Permit Rev-1

# US ROCKIES WATTENBERG PLANNING

CASING DETAILS		
TVD	MD	Size
1500.00	1508.79	9-5/8
7462.00	7904.10	5-1/2

WELL DETAILS: BEIERLE 26-11HZ  
 GL = 5118'  
 RKB = 17' @ 5135.00usft (Drilling Rig)

SECTION DETAILS										
Sec	MD	Inc	Azi	TVD	+N/-S	+E/-W	Dleg	TFace	VSect	Target
1	0.00	0.00	0.00	0.00	0.00	0.00	0.00	0.00	0.00	0.00
2	250.00	0.00	0.00	250.00	0.00	0.00	0.00	0.00	0.00	0.00
3	783.33	8.00	235.80	781.60	-20.89	-30.75	1.50	235.80	-21.49	
4	3080.00	8.00	235.80	3055.92	-200.56	-295.11	0.00	0.00	-206.29	
5	3480.00	0.00	0.00	3454.62	-216.23	-318.17	2.00	180.00	-222.40	
6	6771.23	0.00	0.00	6745.85	-216.23	-318.17	0.00	0.00	-222.40	
7	7904.10	90.63	1.12	7462.00	507.71	-304.02	8.00	1.12	501.67	
8	13088.72	90.63	1.12	7405.00	5691.02	-202.70	0.00	0.00	5685.97	BEIERLE 26-11HZ_BHL

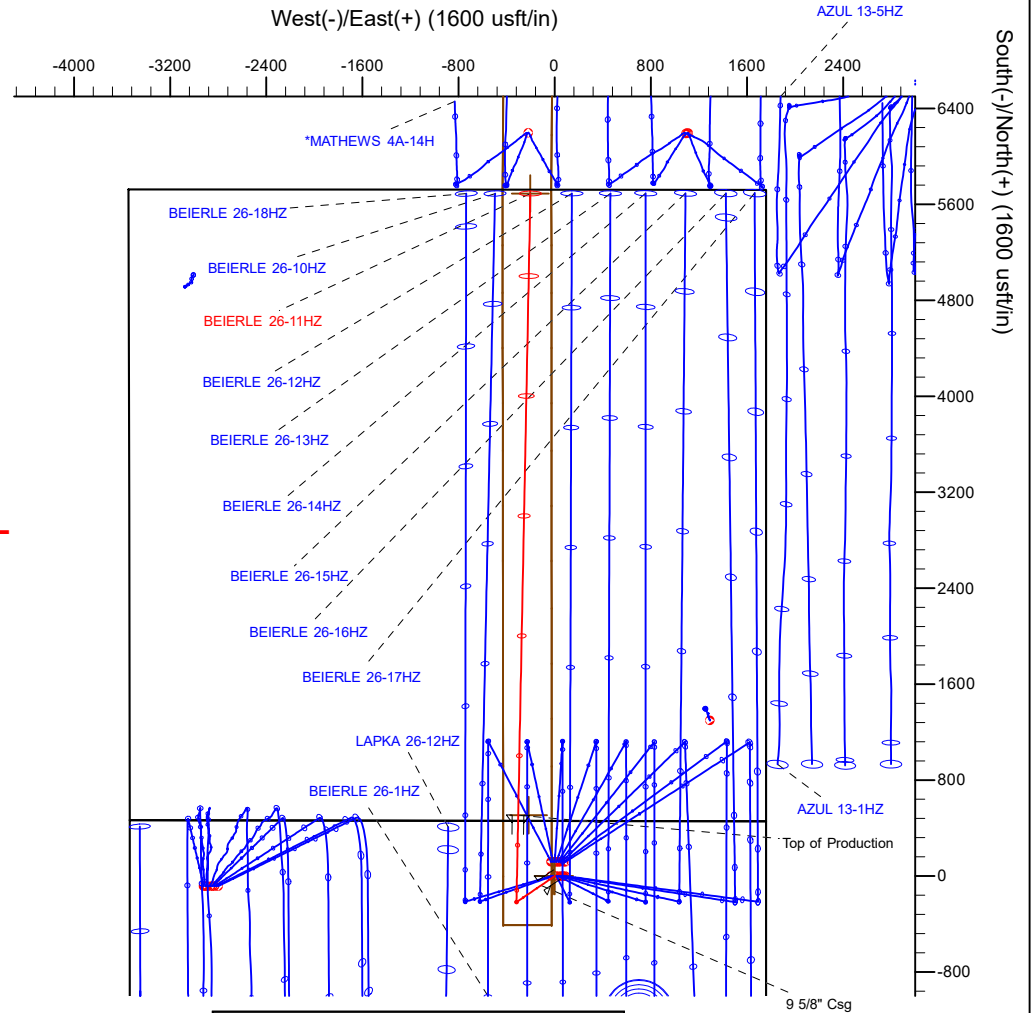
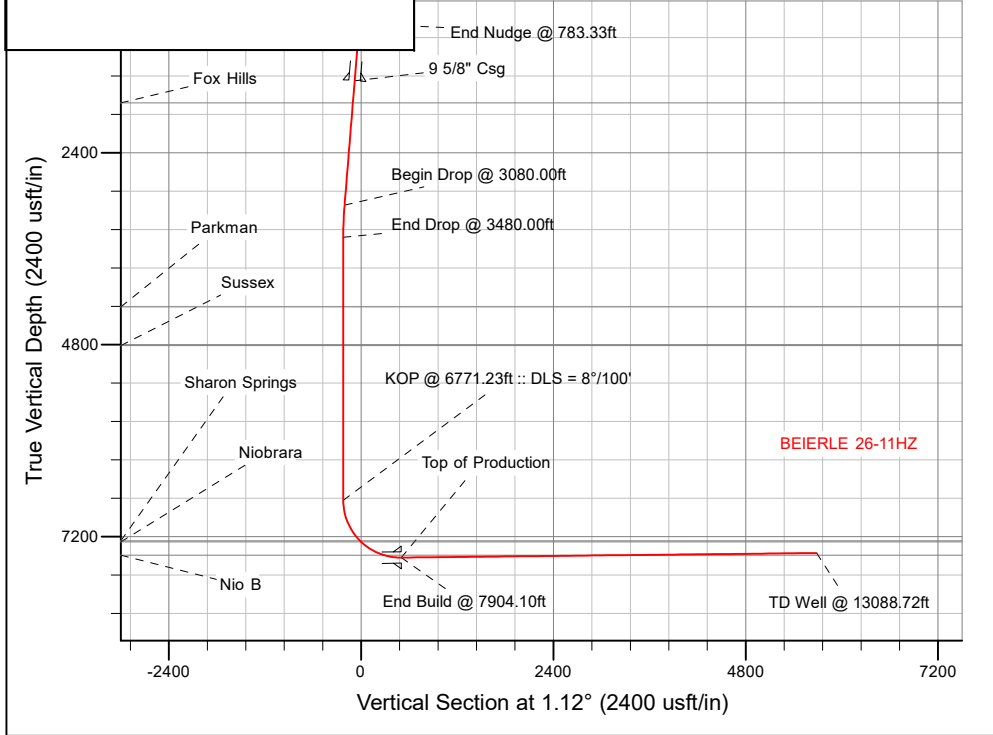
WELLBORE TARGET DETAILS (LAT/LONG)					
Name	TVD	+N/-S	+E/-W	Latitude	Longitude
BEIERLE 26-11HZ_SHL	0.00	0.00	0.00	40.028280	-104.741242
BEIERLE 26-11HZ_BHL	7405.00	5691.02	-202.70	40.043908	-104.741966

FORMATION TOP DETAILS		
TVDPath	MDPath	Formation
1775.00	1786.49	Fox Hills
4327.00	4352.38	Parkman
4811.00	4836.38	Sussex
7252.00	7333.34	Sharon Springs
7267.00	7354.87	Niobrara
7433.00	7691.56	Nio B

**SHL**  
**460' FNL**  
**1759' FEL**

**HEEL**  
**48' FSL**  
**2064' FEL**

**TOE**  
**50' FNL**  
**1972' FEL**



**T**  
**M**  
 Azimuths to True North  
 Magnetic North: 8.09°

Magnetic Field  
 Strength: 52111.4snT  
 Dip Angle: 66.54°  
 Date: 3/24/2018  
 Model: IGRF2015

Plan: Permit Rev-1 (BEIERLE 26-11HZ/Plan A)  
 Date: 5/5/2018

## Corporate Planning Report

<b>Database:</b>	PLANNING	<b>Local Co-ordinate Reference:</b>	Well BEIERLE 26-11HZ
<b>Company:</b>	US ROCKIES WATTENBERG PLANNING	<b>TVD Reference:</b>	RKB = 17' @ 5135.00usft (Drilling Rig)
<b>Project:</b>	WELD-NAD83-UTMFT13N	<b>MD Reference:</b>	RKB = 17' @ 5135.00usft (Drilling Rig)
<b>Site:</b>	1N-66W-26 BEIERLE 2-26HZ PAD	<b>North Reference:</b>	True
<b>Well:</b>	BEIERLE 26-11HZ	<b>Survey Calculation Method:</b>	Minimum Curvature
<b>Wellbore:</b>	Plan A		
<b>Design:</b>	Permit Rev-1		

<b>Project</b>	WELD-NAD83-UTMFT13N		
<b>Map System:</b>	Universal Transverse Mercator (US Survey Feet)	<b>System Datum:</b>	Mean Sea Level
<b>Geo Datum:</b>	North American Datum 1983		
<b>Map Zone:</b>	Zone 13N (108 W to 102 W)		

<b>Site</b>	1N-66W-26 BEIERLE 2-26HZ PAD				
<b>Site Position:</b>		<b>Northing:</b>	14,537,256.31 usft	<b>Latitude:</b>	40.028609
<b>From:</b>	Lat/Long	<b>Easting:</b>	1,712,821.93 usft	<b>Longitude:</b>	-104.741349
<b>Position Uncertainty:</b>	0.00 usft	<b>Slot Radius:</b>	13-3/16 "	<b>Grid Convergence:</b>	0.17 °

<b>Well</b>	BEIERLE 26-11HZ					
<b>Well Position</b>	<b>+N-S</b>	-119.80 usft	<b>Northing:</b>	14,537,136.60 usft	<b>Latitude:</b>	40.028280
	<b>+E-W</b>	29.95 usft	<b>Easting:</b>	1,712,852.23 usft	<b>Longitude:</b>	-104.741242
<b>Position Uncertainty</b>		3.28 usft	<b>Wellhead Elevation:</b>		<b>Ground Level:</b>	5,118.00 usft

<b>Wellbore</b>	Plan A				
<b>Magnetics</b>	<b>Model Name</b>	<b>Sample Date</b>	<b>Declination (°)</b>	<b>Dip Angle (°)</b>	<b>Field Strength (nT)</b>
	IGRF2015	3/24/2018	8.09	66.54	52,111.37439602

<b>Design</b>	Permit Rev-1			
<b>Audit Notes:</b>				
<b>Version:</b>	<b>Phase:</b>	PLAN	<b>Tie On Depth:</b>	0.00
<b>Vertical Section:</b>	<b>Depth From (TVD) (usft)</b>	<b>+N/-S (usft)</b>	<b>+E/-W (usft)</b>	<b>Direction (°)</b>
	0.00	0.00	0.00	1.12

<b>Plan Survey Tool Program</b>		<b>Date</b> 5/5/2018		
<b>Depth From (usft)</b>	<b>Depth To (usft)</b>	<b>Survey (Wellbore)</b>	<b>Tool Name</b>	<b>Remarks</b>
1	0.00	1,500.00 Permit Rev-1 (Plan A)	APC_ISCWSA REV 2 MWD+II	Fixed:v2:crustal field declinatio
2	1,500.00	13,088.72 Permit Rev-1 (Plan A)	APC_ISCWSA REV 2 MWD+II	Fixed:v2:crustal field declinatio

## Corporate Planning Report

<b>Database:</b>	PLANNING	<b>Local Co-ordinate Reference:</b>	Well BEIERLE 26-11HZ
<b>Company:</b>	US ROCKIES WATTENBERG PLANNING	<b>TVD Reference:</b>	RKB = 17' @ 5135.00usft (Drilling Rig)
<b>Project:</b>	WELD-NAD83-UTMFT13N	<b>MD Reference:</b>	RKB = 17' @ 5135.00usft (Drilling Rig)
<b>Site:</b>	1N-66W-26 BEIERLE 2-26HZ PAD	<b>North Reference:</b>	True
<b>Well:</b>	BEIERLE 26-11HZ	<b>Survey Calculation Method:</b>	Minimum Curvature
<b>Wellbore:</b>	Plan A		
<b>Design:</b>	Permit Rev-1		

Plan Sections										
Measured Depth (usft)	Inclination (°)	Azimuth (°)	Vertical Depth (usft)	+N/-S (usft)	+E/-W (usft)	Dogleg Rate (°/100usft)	Build Rate (°/100usft)	Turn Rate (°/100usft)	TFO (°)	Target
0.00	0.00	0.00	0.00	0.00	0.00	0.00	0.00	0.00	0.00	
250.00	0.00	0.00	250.00	0.00	0.00	0.00	0.00	0.00	0.00	
783.33	8.00	235.80	781.60	-20.89	-30.75	1.50	1.50	0.00	235.80	
3,080.00	8.00	235.80	3,055.92	-200.56	-295.11	0.00	0.00	0.00	0.00	
3,480.00	0.00	0.00	3,454.62	-216.23	-318.17	2.00	-2.00	31.05	180.00	
6,771.23	0.00	0.00	6,745.85	-216.23	-318.17	0.00	0.00	0.00	0.00	
7,904.10	90.63	1.12	7,462.00	507.71	-304.02	8.00	8.00	0.10	1.12	
13,088.72	90.63	1.12	7,405.00	5,691.02	-202.70	0.00	0.00	0.00	0.00	BEIERLE 26-11HZ_B

## Corporate Planning Report

<b>Database:</b>	PLANNING	<b>Local Co-ordinate Reference:</b>	Well BEIERLE 26-11HZ
<b>Company:</b>	US ROCKIES WATTENBERG PLANNING	<b>TVD Reference:</b>	RKB = 17' @ 5135.00usft (Drilling Rig)
<b>Project:</b>	WELD-NAD83-UTMFT13N	<b>MD Reference:</b>	RKB = 17' @ 5135.00usft (Drilling Rig)
<b>Site:</b>	1N-66W-26 BEIERLE 2-26HZ PAD	<b>North Reference:</b>	True
<b>Well:</b>	BEIERLE 26-11HZ	<b>Survey Calculation Method:</b>	Minimum Curvature
<b>Wellbore:</b>	Plan A		
<b>Design:</b>	Permit Rev-1		

Planned Survey										
Measured Depth (usft)	Inclination (°)	Azimuth (°)	Vertical Depth (usft)	+N/-S (usft)	+E/-W (usft)	Vertical Section (usft)	Dogleg Rate (°/100usft)	Build Rate (°/100usft)	Turn Rate (°/100usft)	
0.00	0.00	0.00	0.00	0.00	0.00	0.00	0.00	0.00	0.00	0.00
100.00	0.00	0.00	100.00	0.00	0.00	0.00	0.00	0.00	0.00	0.00
200.00	0.00	0.00	200.00	0.00	0.00	0.00	0.00	0.00	0.00	0.00
250.00	0.00	0.00	250.00	0.00	0.00	0.00	0.00	0.00	0.00	0.00
<b>Begin Nudge @ 250.00ft</b>										
300.00	0.75	235.80	300.00	-0.18	-0.27	-0.19	1.50	1.50	0.00	
400.00	2.25	235.80	399.96	-1.66	-2.44	-1.70	1.50	1.50	0.00	
500.00	3.75	235.80	499.82	-4.60	-6.76	-4.73	1.50	1.50	0.00	
600.00	5.25	235.80	599.51	-9.01	-13.25	-9.26	1.50	1.50	0.00	
700.00	6.75	235.80	698.96	-14.88	-21.90	-15.31	1.50	1.50	0.00	
783.33	8.00	235.80	781.60	-20.89	-30.75	-21.49	1.50	1.50	0.00	
<b>End Nudge @ 783.33ft</b>										
800.00	8.00	235.80	798.11	-22.20	-32.66	-22.83	0.00	0.00	0.00	
900.00	8.00	235.80	897.13	-30.02	-44.17	-30.88	0.00	0.00	0.00	
1,000.00	8.00	235.80	996.16	-37.84	-55.69	-38.92	0.00	0.00	0.00	
1,100.00	8.00	235.80	1,095.19	-45.67	-67.20	-46.97	0.00	0.00	0.00	
1,200.00	8.00	235.80	1,194.21	-53.49	-78.71	-55.02	0.00	0.00	0.00	
1,300.00	8.00	235.80	1,293.24	-61.31	-90.22	-63.06	0.00	0.00	0.00	
1,400.00	8.00	235.80	1,392.27	-69.13	-101.73	-71.11	0.00	0.00	0.00	
1,500.00	8.00	235.80	1,491.29	-76.96	-113.24	-79.16	0.00	0.00	0.00	
1,508.79	8.00	235.80	1,500.00	-77.64	-114.25	-79.86	0.00	0.00	0.00	
<b>9 5/8" Csg</b>										
1,600.00	8.00	235.80	1,590.32	-84.78	-124.75	-87.20	0.00	0.00	0.00	
1,700.00	8.00	235.80	1,689.35	-92.60	-136.26	-95.25	0.00	0.00	0.00	
1,786.49	8.00	235.80	1,775.00	-99.37	-146.22	-102.21	0.00	0.00	0.00	
<b>Fox Hills</b>										
1,800.00	8.00	235.80	1,788.37	-100.43	-147.77	-103.29	0.00	0.00	0.00	
1,900.00	8.00	235.80	1,887.40	-108.25	-159.28	-111.34	0.00	0.00	0.00	
2,000.00	8.00	235.80	1,986.43	-116.07	-170.79	-119.39	0.00	0.00	0.00	
2,100.00	8.00	235.80	2,085.46	-123.89	-182.30	-127.43	0.00	0.00	0.00	
2,200.00	8.00	235.80	2,184.48	-131.72	-193.81	-135.48	0.00	0.00	0.00	
2,300.00	8.00	235.80	2,283.51	-139.54	-205.32	-143.53	0.00	0.00	0.00	
2,400.00	8.00	235.80	2,382.54	-147.36	-216.84	-151.57	0.00	0.00	0.00	
2,500.00	8.00	235.80	2,481.56	-155.18	-228.35	-159.62	0.00	0.00	0.00	
2,600.00	8.00	235.80	2,580.59	-163.01	-239.86	-167.66	0.00	0.00	0.00	
2,700.00	8.00	235.80	2,679.62	-170.83	-251.37	-175.71	0.00	0.00	0.00	
2,800.00	8.00	235.80	2,778.64	-178.65	-262.88	-183.76	0.00	0.00	0.00	
2,900.00	8.00	235.80	2,877.67	-186.47	-274.39	-191.80	0.00	0.00	0.00	
3,000.00	8.00	235.80	2,976.70	-194.30	-285.90	-199.85	0.00	0.00	0.00	
3,080.00	8.00	235.80	3,055.92	-200.56	-295.11	-206.29	0.00	0.00	0.00	
<b>Begin Drop @ 3080.00ft</b>										
3,100.00	7.60	235.80	3,075.73	-202.08	-297.35	-207.85	2.00	-2.00	0.00	
3,200.00	5.60	235.80	3,175.06	-208.54	-306.86	-214.50	2.00	-2.00	0.00	
3,300.00	3.60	235.80	3,274.74	-213.05	-313.49	-219.14	2.00	-2.00	0.00	
3,400.00	1.60	235.80	3,374.63	-215.60	-317.24	-221.76	2.00	-2.00	0.00	
3,480.00	0.00	0.00	3,454.62	-216.23	-318.17	-222.40	2.00	-2.00	155.25	
<b>End Drop @ 3480.00ft</b>										
3,500.00	0.00	0.00	3,474.62	-216.23	-318.17	-222.40	0.00	0.00	0.00	
3,600.00	0.00	0.00	3,574.62	-216.23	-318.17	-222.40	0.00	0.00	0.00	
3,700.00	0.00	0.00	3,674.62	-216.23	-318.17	-222.40	0.00	0.00	0.00	
3,800.00	0.00	0.00	3,774.62	-216.23	-318.17	-222.40	0.00	0.00	0.00	
3,900.00	0.00	0.00	3,874.62	-216.23	-318.17	-222.40	0.00	0.00	0.00	
4,000.00	0.00	0.00	3,974.62	-216.23	-318.17	-222.40	0.00	0.00	0.00	

## Corporate Planning Report

<b>Database:</b>	PLANNING	<b>Local Co-ordinate Reference:</b>	Well BEIERLE 26-11HZ
<b>Company:</b>	US ROCKIES WATTENBERG PLANNING	<b>TVD Reference:</b>	RKB = 17' @ 5135.00usft (Drilling Rig)
<b>Project:</b>	WELD-NAD83-UTMFT13N	<b>MD Reference:</b>	RKB = 17' @ 5135.00usft (Drilling Rig)
<b>Site:</b>	1N-66W-26 BEIERLE 2-26HZ PAD	<b>North Reference:</b>	True
<b>Well:</b>	BEIERLE 26-11HZ	<b>Survey Calculation Method:</b>	Minimum Curvature
<b>Wellbore:</b>	Plan A		
<b>Design:</b>	Permit Rev-1		

Planned Survey									
Measured Depth (usft)	Inclination (°)	Azimuth (°)	Vertical Depth (usft)	+N/-S (usft)	+E/-W (usft)	Vertical Section (usft)	Dogleg Rate (°/100usft)	Build Rate (°/100usft)	Turn Rate (°/100usft)
4,100.00	0.00	0.00	4,074.62	-216.23	-318.17	-222.40	0.00	0.00	0.00
4,200.00	0.00	0.00	4,174.62	-216.23	-318.17	-222.40	0.00	0.00	0.00
4,300.00	0.00	0.00	4,274.62	-216.23	-318.17	-222.40	0.00	0.00	0.00
4,352.38	0.00	0.00	4,327.00	-216.23	-318.17	-222.40	0.00	0.00	0.00
<b>Parkman</b>									
4,400.00	0.00	0.00	4,374.62	-216.23	-318.17	-222.40	0.00	0.00	0.00
4,500.00	0.00	0.00	4,474.62	-216.23	-318.17	-222.40	0.00	0.00	0.00
4,600.00	0.00	0.00	4,574.62	-216.23	-318.17	-222.40	0.00	0.00	0.00
4,700.00	0.00	0.00	4,674.62	-216.23	-318.17	-222.40	0.00	0.00	0.00
4,800.00	0.00	0.00	4,774.62	-216.23	-318.17	-222.40	0.00	0.00	0.00
4,836.38	0.00	0.00	4,811.00	-216.23	-318.17	-222.40	0.00	0.00	0.00
<b>Sussex</b>									
4,900.00	0.00	0.00	4,874.62	-216.23	-318.17	-222.40	0.00	0.00	0.00
5,000.00	0.00	0.00	4,974.62	-216.23	-318.17	-222.40	0.00	0.00	0.00
5,100.00	0.00	0.00	5,074.62	-216.23	-318.17	-222.40	0.00	0.00	0.00
5,200.00	0.00	0.00	5,174.62	-216.23	-318.17	-222.40	0.00	0.00	0.00
5,300.00	0.00	0.00	5,274.62	-216.23	-318.17	-222.40	0.00	0.00	0.00
5,400.00	0.00	0.00	5,374.62	-216.23	-318.17	-222.40	0.00	0.00	0.00
5,500.00	0.00	0.00	5,474.62	-216.23	-318.17	-222.40	0.00	0.00	0.00
5,600.00	0.00	0.00	5,574.62	-216.23	-318.17	-222.40	0.00	0.00	0.00
5,700.00	0.00	0.00	5,674.62	-216.23	-318.17	-222.40	0.00	0.00	0.00
5,800.00	0.00	0.00	5,774.62	-216.23	-318.17	-222.40	0.00	0.00	0.00
5,900.00	0.00	0.00	5,874.62	-216.23	-318.17	-222.40	0.00	0.00	0.00
6,000.00	0.00	0.00	5,974.62	-216.23	-318.17	-222.40	0.00	0.00	0.00
6,100.00	0.00	0.00	6,074.62	-216.23	-318.17	-222.40	0.00	0.00	0.00
6,200.00	0.00	0.00	6,174.62	-216.23	-318.17	-222.40	0.00	0.00	0.00
6,300.00	0.00	0.00	6,274.62	-216.23	-318.17	-222.40	0.00	0.00	0.00
6,400.00	0.00	0.00	6,374.62	-216.23	-318.17	-222.40	0.00	0.00	0.00
6,500.00	0.00	0.00	6,474.62	-216.23	-318.17	-222.40	0.00	0.00	0.00
6,600.00	0.00	0.00	6,574.62	-216.23	-318.17	-222.40	0.00	0.00	0.00
6,700.00	0.00	0.00	6,674.62	-216.23	-318.17	-222.40	0.00	0.00	0.00
6,771.23	0.00	0.00	6,745.85	-216.23	-318.17	-222.40	0.00	0.00	0.00
<b>KOP @ 6771.23ft :: DLS = 8°/100'</b>									
6,800.00	2.30	1.12	6,774.61	-215.65	-318.16	-221.83	8.00	8.00	3.89
6,900.00	10.30	1.12	6,873.93	-204.68	-317.94	-210.86	8.00	8.00	0.00
7,000.00	18.30	1.12	6,970.75	-180.01	-317.46	-186.18	8.00	8.00	0.00
7,100.00	26.30	1.12	7,063.19	-142.10	-316.72	-148.26	8.00	8.00	0.00
7,200.00	34.30	1.12	7,149.46	-91.69	-315.73	-97.84	8.00	8.00	0.00
7,300.00	42.30	1.12	7,227.87	-29.77	-314.52	-35.92	8.00	8.00	0.00
7,333.34	44.97	1.12	7,252.00	-6.77	-314.07	-12.91	8.00	8.00	0.00
<b>Sharon Springs</b>									
7,354.87	46.69	1.12	7,267.00	8.66	-313.77	2.53	8.00	8.00	0.00
<b>Niobrara</b>									
7,400.00	50.30	1.12	7,296.90	42.45	-313.11	36.32	8.00	8.00	0.00
7,500.00	58.30	1.12	7,355.21	123.58	-311.53	117.47	8.00	8.00	0.00
7,600.00	66.30	1.12	7,401.65	212.03	-309.80	205.94	8.00	8.00	0.00
7,691.56	73.63	1.12	7,433.00	297.98	-308.12	291.90	8.00	8.00	0.00
<b>Nio B</b>									
7,700.00	74.30	1.12	7,435.33	306.09	-307.96	300.01	8.00	8.00	0.00
7,800.00	82.30	1.12	7,455.59	403.91	-306.05	397.85	8.00	8.00	0.00
7,900.00	90.30	1.12	7,462.04	503.60	-304.10	497.56	8.00	8.00	0.00
7,904.10	90.63	1.12	7,462.00	507.70	-304.02	501.66	8.00	8.00	0.00
<b>End Build @ 7904.10ft - Top of Production</b>									

## Corporate Planning Report

<b>Database:</b>	PLANNING	<b>Local Co-ordinate Reference:</b>	Well BEIERLE 26-11HZ
<b>Company:</b>	US ROCKIES WATTENBERG PLANNING	<b>TVD Reference:</b>	RKB = 17' @ 5135.00usft (Drilling Rig)
<b>Project:</b>	WELD-NAD83-UTMFT13N	<b>MD Reference:</b>	RKB = 17' @ 5135.00usft (Drilling Rig)
<b>Site:</b>	1N-66W-26 BEIERLE 2-26HZ PAD	<b>North Reference:</b>	True
<b>Well:</b>	BEIERLE 26-11HZ	<b>Survey Calculation Method:</b>	Minimum Curvature
<b>Wellbore:</b>	Plan A		
<b>Design:</b>	Permit Rev-1		

Planned Survey									
Measured Depth (usft)	Inclination (°)	Azimuth (°)	Vertical Depth (usft)	+N/-S (usft)	+E/-W (usft)	Vertical Section (usft)	Dogleg Rate (°/100usft)	Build Rate (°/100usft)	Turn Rate (°/100usft)
8,000.00	90.63	1.12	7,460.95	603.58	-302.14	597.56	0.00	0.00	0.00
8,100.00	90.63	1.12	7,459.85	703.55	-300.19	697.55	0.00	0.00	0.00
8,200.00	90.63	1.12	7,458.75	803.53	-298.23	797.55	0.00	0.00	0.00
8,300.00	90.63	1.12	7,457.65	903.50	-296.28	897.54	0.00	0.00	0.00
8,400.00	90.63	1.12	7,456.55	1,003.48	-294.33	997.53	0.00	0.00	0.00
8,500.00	90.63	1.12	7,455.45	1,103.45	-292.37	1,097.53	0.00	0.00	0.00
8,600.00	90.63	1.12	7,454.35	1,203.43	-290.42	1,197.52	0.00	0.00	0.00
8,700.00	90.63	1.12	7,453.25	1,303.40	-288.46	1,297.51	0.00	0.00	0.00
8,800.00	90.63	1.12	7,452.15	1,403.38	-286.51	1,397.51	0.00	0.00	0.00
8,900.00	90.63	1.12	7,451.05	1,503.35	-284.56	1,497.50	0.00	0.00	0.00
9,000.00	90.63	1.12	7,449.95	1,603.33	-282.60	1,597.50	0.00	0.00	0.00
9,100.00	90.63	1.12	7,448.85	1,703.30	-280.65	1,697.49	0.00	0.00	0.00
9,200.00	90.63	1.12	7,447.76	1,803.28	-278.69	1,797.48	0.00	0.00	0.00
9,300.00	90.63	1.12	7,446.66	1,903.25	-276.74	1,897.48	0.00	0.00	0.00
9,400.00	90.63	1.12	7,445.56	2,003.23	-274.78	1,997.47	0.00	0.00	0.00
9,500.00	90.63	1.12	7,444.46	2,103.20	-272.83	2,097.47	0.00	0.00	0.00
9,600.00	90.63	1.12	7,443.36	2,203.18	-270.88	2,197.46	0.00	0.00	0.00
9,700.00	90.63	1.12	7,442.26	2,303.15	-268.92	2,297.45	0.00	0.00	0.00
9,800.00	90.63	1.12	7,441.16	2,403.13	-266.97	2,397.45	0.00	0.00	0.00
9,900.00	90.63	1.12	7,440.06	2,503.10	-265.01	2,497.44	0.00	0.00	0.00
10,000.00	90.63	1.12	7,438.96	2,603.08	-263.06	2,597.44	0.00	0.00	0.00
10,100.00	90.63	1.12	7,437.86	2,703.05	-261.10	2,697.43	0.00	0.00	0.00
10,200.00	90.63	1.12	7,436.76	2,803.03	-259.15	2,797.42	0.00	0.00	0.00
10,300.00	90.63	1.12	7,435.66	2,903.00	-257.20	2,897.42	0.00	0.00	0.00
10,400.00	90.63	1.12	7,434.56	3,002.98	-255.24	2,997.41	0.00	0.00	0.00
10,500.00	90.63	1.12	7,433.46	3,102.95	-253.29	3,097.41	0.00	0.00	0.00
10,600.00	90.63	1.12	7,432.36	3,202.92	-251.33	3,197.40	0.00	0.00	0.00
10,700.00	90.63	1.12	7,431.26	3,302.90	-249.38	3,297.39	0.00	0.00	0.00
10,800.00	90.63	1.12	7,430.16	3,402.87	-247.43	3,397.39	0.00	0.00	0.00
10,900.00	90.63	1.12	7,429.06	3,502.85	-245.47	3,497.38	0.00	0.00	0.00
11,000.00	90.63	1.12	7,427.97	3,602.82	-243.52	3,597.38	0.00	0.00	0.00
11,100.00	90.63	1.12	7,426.87	3,702.80	-241.56	3,697.37	0.00	0.00	0.00
11,200.00	90.63	1.12	7,425.77	3,802.77	-239.61	3,797.36	0.00	0.00	0.00
11,300.00	90.63	1.12	7,424.67	3,902.75	-237.65	3,897.36	0.00	0.00	0.00
11,400.00	90.63	1.12	7,423.57	4,002.72	-235.70	3,997.35	0.00	0.00	0.00
11,500.00	90.63	1.12	7,422.47	4,102.70	-233.75	4,097.35	0.00	0.00	0.00
11,600.00	90.63	1.12	7,421.37	4,202.67	-231.79	4,197.34	0.00	0.00	0.00
11,700.00	90.63	1.12	7,420.27	4,302.65	-229.84	4,297.33	0.00	0.00	0.00
11,800.00	90.63	1.12	7,419.17	4,402.62	-227.88	4,397.33	0.00	0.00	0.00
11,900.00	90.63	1.12	7,418.07	4,502.60	-225.93	4,497.32	0.00	0.00	0.00
12,000.00	90.63	1.12	7,416.97	4,602.57	-223.97	4,597.32	0.00	0.00	0.00
12,100.00	90.63	1.12	7,415.87	4,702.55	-222.02	4,697.31	0.00	0.00	0.00
12,200.00	90.63	1.12	7,414.77	4,802.52	-220.07	4,797.30	0.00	0.00	0.00
12,300.00	90.63	1.12	7,413.67	4,902.50	-218.11	4,897.30	0.00	0.00	0.00
12,400.00	90.63	1.12	7,412.57	5,002.47	-216.16	4,997.29	0.00	0.00	0.00
12,500.00	90.63	1.12	7,411.47	5,102.45	-214.20	5,097.29	0.00	0.00	0.00
12,600.00	90.63	1.12	7,410.37	5,202.42	-212.25	5,197.28	0.00	0.00	0.00
12,700.00	90.63	1.12	7,409.27	5,302.40	-210.30	5,297.27	0.00	0.00	0.00
12,800.00	90.63	1.12	7,408.17	5,402.37	-208.34	5,397.27	0.00	0.00	0.00
12,900.00	90.63	1.12	7,407.08	5,502.35	-206.39	5,497.26	0.00	0.00	0.00
13,000.00	90.63	1.12	7,405.98	5,602.32	-204.43	5,597.26	0.00	0.00	0.00
13,088.72	90.63	1.12	7,405.00	5,691.02	-202.70	5,685.97	0.00	0.00	0.00

**TD Well @ 13088.72ft**

## Corporate Planning Report

<b>Database:</b>	PLANNING	<b>Local Co-ordinate Reference:</b>	Well BEIERLE 26-11HZ
<b>Company:</b>	US ROCKIES WATTENBERG PLANNING	<b>TVD Reference:</b>	RKB = 17' @ 5135.00usft (Drilling Rig)
<b>Project:</b>	WELD-NAD83-UTMFT13N	<b>MD Reference:</b>	RKB = 17' @ 5135.00usft (Drilling Rig)
<b>Site:</b>	1N-66W-26 BEIERLE 2-26HZ PAD	<b>North Reference:</b>	True
<b>Well:</b>	BEIERLE 26-11HZ	<b>Survey Calculation Method:</b>	Minimum Curvature
<b>Wellbore:</b>	Plan A		
<b>Design:</b>	Permit Rev-1		

Casing Points					
	Measured Depth (usft)	Vertical Depth (usft)	Name	Casing Diameter (")	Hole Diameter (")
	1,508.79	1,500.00	9 5/8" Csg	9-5/8	13-1/2
	7,904.10	7,462.00	Top of Production	5-1/2	7-7/8

Formations						
	Measured Depth (usft)	Vertical Depth (usft)	Name	Lithology	Dip (°)	Dip Direction (°)
	1,786.49	1,775.00	Fox Hills			
	4,352.38	4,327.00	Parkman			
	4,836.38	4,811.00	Sussex			
	7,333.34	7,252.00	Sharon Springs			
	7,354.87	7,267.00	Niobrara			
	7,691.56	7,433.00	Nio B			

Plan Annotations					
	Measured Depth (usft)	Vertical Depth (usft)	Local Coordinates		Comment
			+N/-S (usft)	+E/-W (usft)	
	250.00	250.00	0.00	0.00	Begin Nudge @ 250.00ft
	783.33	781.60	-20.89	-30.75	End Nudge @ 783.33ft
	3,080.00	3,055.92	-200.56	-295.11	Begin Drop @ 3080.00ft
	3,480.00	3,454.62	-216.23	-318.17	End Drop @ 3480.00ft
	6,771.23	6,745.85	-216.23	-318.17	KOP @ 6771.23ft :: DLS = 8°/100'
	7,904.10	7,462.00	507.71	-304.02	End Build @ 7904.10ft
	13,088.72	7,405.00	5,691.02	-202.70	TD Well @ 13088.72ft