

# **US ROCKIES WATTENBERG PLANNING**

**WELD-NAD83-UTMFT13N**

**1N-66W-26 BEIERLE 2-26HZ PAD**

**BEIERLE 26-14HZ**

**Plan A**

**Plan: Permit Rev-1**

SHL Lat/Long: 40.028279/-104.741082

Survey Program: MWD+IFR

## **Standard Planning Report**

**05 May, 2018**

Project: WELD-NAD83-UTMFT13N  
 Site: 1N-66W-26 BEIERLE 2-26HZ PAD  
 Well: BEIERLE 26-14HZ  
 Wellbore: Plan A  
 Design: Permit Rev-1

# US ROCKIES WATTENBERG PLANNING

CASING DETAILS		
TVD	MD	Size
1500.00	1516.38	9-5/8
7471.00	7959.58	5-1/2

WELL DETAILS: BEIERLE 26-14HZ  
 GL = 5118'  
 RKB = 17' @ 5135.00usft (Drilling Rig)

SECTION DETAILS										
Sec	MD	Inc	Azi	TVD	+N/-S	+E/-W	Dleg	TFace	Vsect	Target
1	0.00	0.00	0.00	0.00	0.00	0.00	0.00	0.00	0.00	
2	250.00	0.00	0.00	250.00	0.00	0.00	0.00	0.00	0.00	
3	1064.00	12.21	106.90	1057.85	-25.12	82.67	1.50	106.90	-25.10	
4	3864.00	12.21	106.90	3794.51	-197.27	649.29	0.00	0.00	-197.16	
5	4474.50	0.00	0.00	4400.40	-216.11	711.29	2.00	180.00	-215.98	
6	6828.92	0.00	0.00	6754.82	-216.11	711.29	0.00	0.00	-215.98	
7	7959.58	90.45	0.01	7471.00	505.75	711.44	8.00	0.01	505.87	
8	13147.59	90.45	0.01	7430.00	5693.60	712.53	0.00	0.00	5693.72	BEIERLE 26-14HZ_BHL

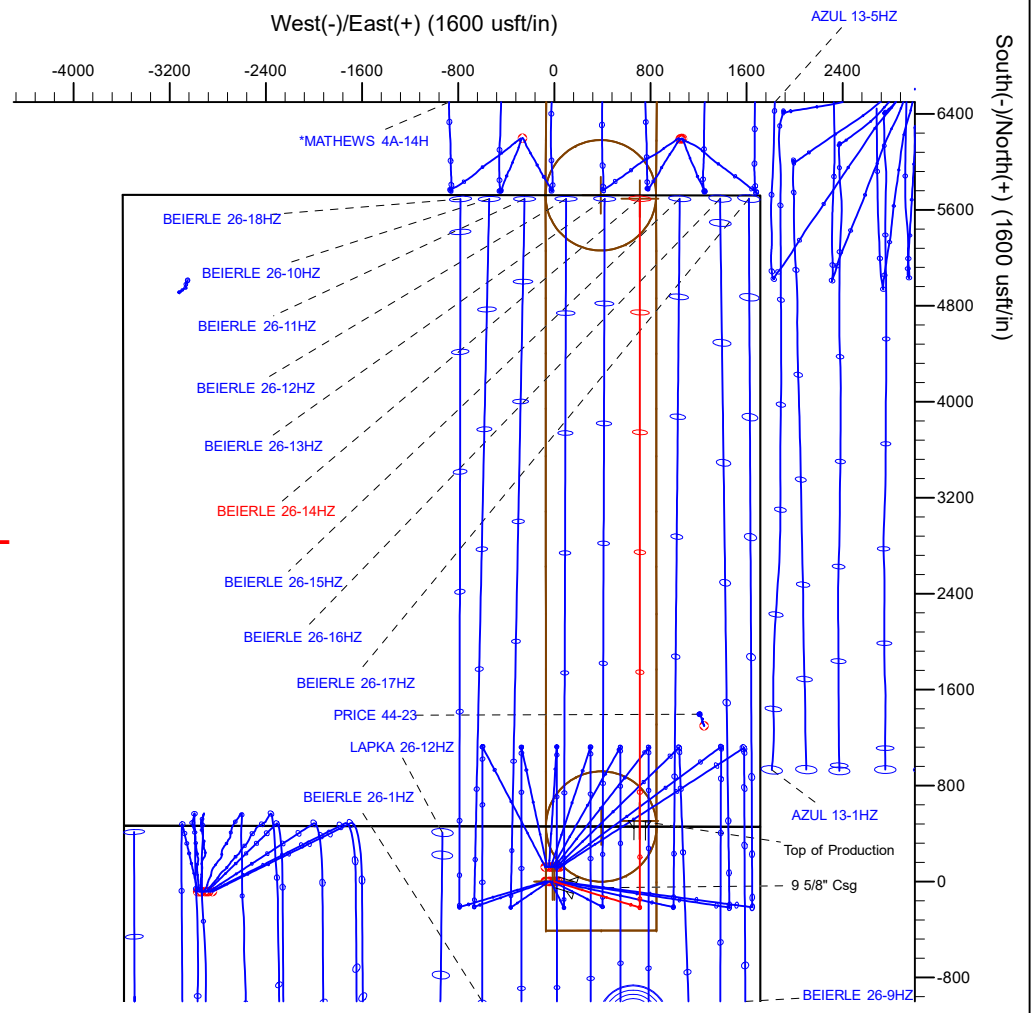
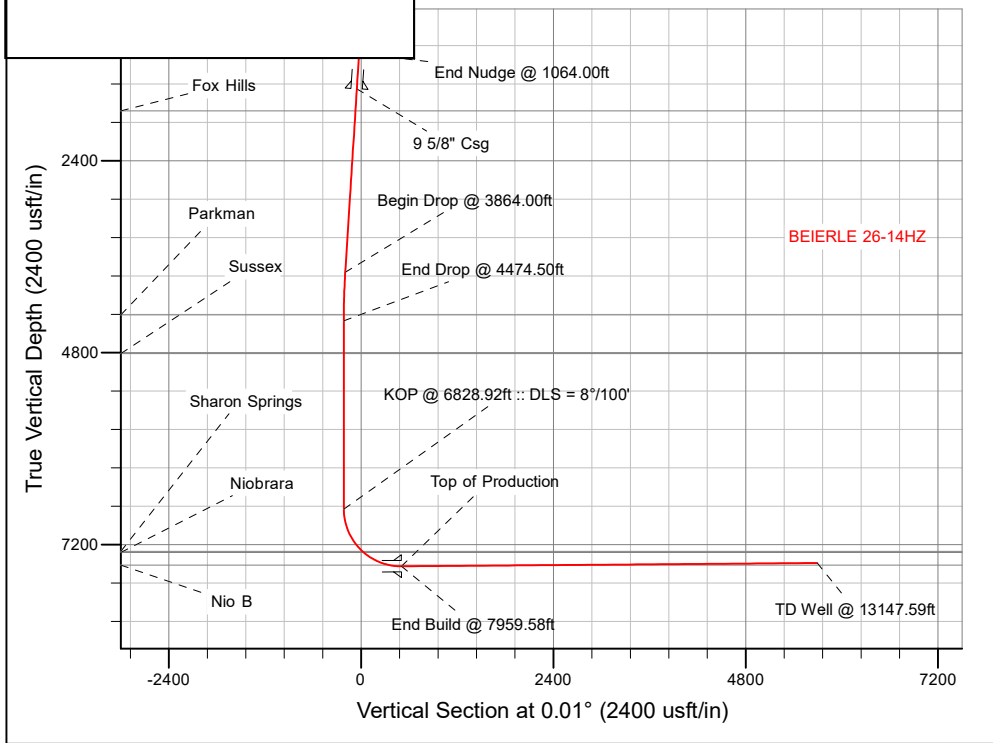
WELLBORE TARGET DETAILS (LAT/LONG)					
Name	TVD	+N/-S	+E/-W	Latitude	Longitude
BEIERLE 26-14HZ_SHL	0.00	0.00	0.00	40.028279	-104.741082
BEIERLE 26-14HZ_BHL	7430.00	5693.60	712.53	40.043914	-104.738536

FORMATION TOP DETAILS		
TVDPath	MDPath	Formation
1775.00	1797.75	Fox Hills
4327.00	4401.09	Parkman
4811.00	4885.10	Sussex
7284.00	7424.36	Sharon Springs
7299.00	7447.02	Niobrara
7457.00	7811.97	Nio B

**SHL**  
**460' FNL**  
**1714' FEL**

**HEEL**  
**48' FSL**  
**1003' FEL**

**TOE**  
**50' FNL**  
**1012' FEL**



**T**  
**M**  
 Azimuths to True North  
 Magnetic North: 8.09°

Magnetic Field  
 Strength: 52111.7snT  
 Dip Angle: 66.54°  
 Date: 3/23/2018  
 Model: IGRF2015

Plan: Permit Rev-1 (BEIERLE 26-14HZ/Plan A)  
 Date: 5/5/2018

## Corporate Planning Report

<b>Database:</b>	PLANNING	<b>Local Co-ordinate Reference:</b>	Well BEIERLE 26-14HZ
<b>Company:</b>	US ROCKIES WATTENBERG PLANNING	<b>TVD Reference:</b>	RKB = 17' @ 5135.00usft (Drilling Rig)
<b>Project:</b>	WELD-NAD83-UTMFT13N	<b>MD Reference:</b>	RKB = 17' @ 5135.00usft (Drilling Rig)
<b>Site:</b>	1N-66W-26 BEIERLE 2-26HZ PAD	<b>North Reference:</b>	True
<b>Well:</b>	BEIERLE 26-14HZ	<b>Survey Calculation Method:</b>	Minimum Curvature
<b>Wellbore:</b>	Plan A		
<b>Design:</b>	Permit Rev-1		

<b>Project</b>	WELD-NAD83-UTMFT13N		
<b>Map System:</b>	Universal Transverse Mercator (US Survey Feet)	<b>System Datum:</b>	Mean Sea Level
<b>Geo Datum:</b>	North American Datum 1983		
<b>Map Zone:</b>	Zone 13N (108 W to 102 W)		

<b>Site</b>	1N-66W-26 BEIERLE 2-26HZ PAD				
<b>Site Position:</b>		<b>Northing:</b>	14,537,256.31 usft	<b>Latitude:</b>	40.028609
<b>From:</b>	Lat/Long	<b>Easting:</b>	1,712,821.93 usft	<b>Longitude:</b>	-104.741349
<b>Position Uncertainty:</b>	0.00 usft	<b>Slot Radius:</b>	13-3/16 "	<b>Grid Convergence:</b>	0.17 °

<b>Well</b>	BEIERLE 26-14HZ					
<b>Well Position</b>	<b>+N-S</b>	-120.17 usft	<b>Northing:</b>	14,537,136.36 usft	<b>Latitude:</b>	40.028279
	<b>+E-W</b>	74.74 usft	<b>Easting:</b>	1,712,897.02 usft	<b>Longitude:</b>	-104.741082
<b>Position Uncertainty</b>		3.28 usft	<b>Wellhead Elevation:</b>		<b>Ground Level:</b>	5,118.00 usft

<b>Wellbore</b>	Plan A				
<b>Magnetics</b>	<b>Model Name</b>	<b>Sample Date</b>	<b>Declination (°)</b>	<b>Dip Angle (°)</b>	<b>Field Strength (nT)</b>
	IGRF2015	3/23/2018	8.09	66.54	52,111.70375317

<b>Design</b>	Permit Rev-1			
<b>Audit Notes:</b>				
<b>Version:</b>	<b>Phase:</b>	PLAN	<b>Tie On Depth:</b>	0.00
<b>Vertical Section:</b>	<b>Depth From (TVD) (usft)</b>	<b>+N-S (usft)</b>	<b>+E-W (usft)</b>	<b>Direction (°)</b>
	0.00	0.00	0.00	0.01

<b>Plan Survey Tool Program</b>		<b>Date</b>	5/5/2018		
<b>Depth From (usft)</b>	<b>Depth To (usft)</b>	<b>Survey (Wellbore)</b>	<b>Tool Name</b>	<b>Remarks</b>	
1	0.00	1,500.00	Permit Rev-1 (Plan A)	APC_ISCWSA REV 2 MWD+II Fixed:v2:crustal field declinatio	
2	1,500.00	13,147.59	Permit Rev-1 (Plan A)	APC_ISCWSA REV 2 MWD+II Fixed:v2:crustal field declinatio	

## Corporate Planning Report

<b>Database:</b>	PLANNING	<b>Local Co-ordinate Reference:</b>	Well BEIERLE 26-14HZ
<b>Company:</b>	US ROCKIES WATTENBERG PLANNING	<b>TVD Reference:</b>	RKB = 17' @ 5135.00usft (Drilling Rig)
<b>Project:</b>	WELD-NAD83-UTMFT13N	<b>MD Reference:</b>	RKB = 17' @ 5135.00usft (Drilling Rig)
<b>Site:</b>	1N-66W-26 BEIERLE 2-26HZ PAD	<b>North Reference:</b>	True
<b>Well:</b>	BEIERLE 26-14HZ	<b>Survey Calculation Method:</b>	Minimum Curvature
<b>Wellbore:</b>	Plan A		
<b>Design:</b>	Permit Rev-1		

Plan Sections										
Measured Depth (usft)	Inclination (°)	Azimuth (°)	Vertical Depth (usft)	+N/-S (usft)	+E/-W (usft)	Dogleg Rate (°/100usft)	Build Rate (°/100usft)	Turn Rate (°/100usft)	TFO (°)	Target
0.00	0.00	0.00	0.00	0.00	0.00	0.00	0.00	0.00	0.00	
250.00	0.00	0.00	250.00	0.00	0.00	0.00	0.00	0.00	0.00	
1,064.00	12.21	106.90	1,057.85	-25.12	82.67	1.50	1.50	0.00	106.90	
3,864.00	12.21	106.90	3,794.51	-197.27	649.29	0.00	0.00	0.00	0.00	
4,474.50	0.00	0.00	4,400.40	-216.11	711.29	2.00	-2.00	0.00	180.00	
6,828.92	0.00	0.00	6,754.82	-216.11	711.29	0.00	0.00	0.00	0.00	
7,959.58	90.45	0.01	7,471.00	505.75	711.44	8.00	8.00	0.00	0.01	
13,147.59	90.45	0.01	7,430.00	5,693.60	712.53	0.00	0.00	0.00	0.00	BEIERLE 26-14HZ_B

## Corporate Planning Report

<b>Database:</b>	PLANNING	<b>Local Co-ordinate Reference:</b>	Well BEIERLE 26-14HZ
<b>Company:</b>	US ROCKIES WATTENBERG PLANNING	<b>TVD Reference:</b>	RKB = 17' @ 5135.00usft (Drilling Rig)
<b>Project:</b>	WELD-NAD83-UTMFT13N	<b>MD Reference:</b>	RKB = 17' @ 5135.00usft (Drilling Rig)
<b>Site:</b>	1N-66W-26 BEIERLE 2-26HZ PAD	<b>North Reference:</b>	True
<b>Well:</b>	BEIERLE 26-14HZ	<b>Survey Calculation Method:</b>	Minimum Curvature
<b>Wellbore:</b>	Plan A		
<b>Design:</b>	Permit Rev-1		

Planned Survey										
Measured Depth (usft)	Inclination (°)	Azimuth (°)	Vertical Depth (usft)	+N/-S (usft)	+E/-W (usft)	Vertical Section (usft)	Dogleg Rate (°/100usft)	Build Rate (°/100usft)	Turn Rate (°/100usft)	
0.00	0.00	0.00	0.00	0.00	0.00	0.00	0.00	0.00	0.00	0.00
100.00	0.00	0.00	100.00	0.00	0.00	0.00	0.00	0.00	0.00	0.00
200.00	0.00	0.00	200.00	0.00	0.00	0.00	0.00	0.00	0.00	0.00
250.00	0.00	0.00	250.00	0.00	0.00	0.00	0.00	0.00	0.00	0.00
<b>Begin Nudge @ 250.00ft</b>										
300.00	0.75	106.90	300.00	-0.10	0.31	-0.10	1.50	1.50	0.00	
400.00	2.25	106.90	399.96	-0.86	2.82	-0.86	1.50	1.50	0.00	
500.00	3.75	106.90	499.82	-2.38	7.83	-2.38	1.50	1.50	0.00	
600.00	5.25	106.90	599.51	-4.66	15.33	-4.66	1.50	1.50	0.00	
700.00	6.75	106.90	698.96	-7.70	25.33	-7.69	1.50	1.50	0.00	
800.00	8.25	106.90	798.10	-11.49	37.82	-11.48	1.50	1.50	0.00	
900.00	9.75	106.90	896.87	-16.04	52.79	-16.03	1.50	1.50	0.00	
1,000.00	11.25	106.90	995.19	-21.34	70.23	-21.32	1.50	1.50	0.00	
1,064.00	12.21	106.90	1,057.85	-25.12	82.67	-25.10	1.50	1.50	0.00	
<b>End Nudge @ 1064.00ft</b>										
1,100.00	12.21	106.90	1,093.04	-27.33	89.96	-27.32	0.00	0.00	0.00	
1,200.00	12.21	106.90	1,190.78	-33.48	110.20	-33.46	0.00	0.00	0.00	
1,300.00	12.21	106.90	1,288.51	-39.63	130.43	-39.61	0.00	0.00	0.00	
1,400.00	12.21	106.90	1,386.25	-45.78	150.67	-45.75	0.00	0.00	0.00	
1,500.00	12.21	106.90	1,483.99	-51.92	170.90	-51.89	0.00	0.00	0.00	
1,516.38	12.21	106.90	1,500.00	-52.93	174.22	-52.90	0.00	0.00	0.00	
<b>9 5/8" Csg</b>										
1,600.00	12.21	106.90	1,581.73	-58.07	191.14	-58.04	0.00	0.00	0.00	
1,700.00	12.21	106.90	1,679.47	-64.22	211.38	-64.18	0.00	0.00	0.00	
1,797.75	12.21	106.90	1,775.00	-70.23	231.16	-70.19	0.00	0.00	0.00	
<b>Fox Hills</b>										
1,800.00	12.21	106.90	1,777.20	-70.37	231.61	-70.33	0.00	0.00	0.00	
1,900.00	12.21	106.90	1,874.94	-76.52	251.85	-76.47	0.00	0.00	0.00	
2,000.00	12.21	106.90	1,972.68	-82.67	272.08	-82.62	0.00	0.00	0.00	
2,100.00	12.21	106.90	2,070.42	-88.81	292.32	-88.76	0.00	0.00	0.00	
2,200.00	12.21	106.90	2,168.16	-94.96	312.56	-94.91	0.00	0.00	0.00	
2,300.00	12.21	106.90	2,265.89	-101.11	332.79	-101.05	0.00	0.00	0.00	
2,400.00	12.21	106.90	2,363.63	-107.26	353.03	-107.20	0.00	0.00	0.00	
2,500.00	12.21	106.90	2,461.37	-113.41	373.27	-113.34	0.00	0.00	0.00	
2,600.00	12.21	106.90	2,559.11	-119.55	393.50	-119.49	0.00	0.00	0.00	
2,700.00	12.21	106.90	2,656.84	-125.70	413.74	-125.63	0.00	0.00	0.00	
2,800.00	12.21	106.90	2,754.58	-131.85	433.97	-131.78	0.00	0.00	0.00	
2,900.00	12.21	106.90	2,852.32	-138.00	454.21	-137.92	0.00	0.00	0.00	
3,000.00	12.21	106.90	2,950.06	-144.15	474.45	-144.07	0.00	0.00	0.00	
3,100.00	12.21	106.90	3,047.80	-150.30	494.68	-150.21	0.00	0.00	0.00	
3,200.00	12.21	106.90	3,145.53	-156.44	514.92	-156.35	0.00	0.00	0.00	
3,300.00	12.21	106.90	3,243.27	-162.59	535.15	-162.50	0.00	0.00	0.00	
3,400.00	12.21	106.90	3,341.01	-168.74	555.39	-168.64	0.00	0.00	0.00	
3,500.00	12.21	106.90	3,438.75	-174.89	575.63	-174.79	0.00	0.00	0.00	
3,600.00	12.21	106.90	3,536.49	-181.04	595.86	-180.93	0.00	0.00	0.00	
3,700.00	12.21	106.90	3,634.22	-187.19	616.10	-187.08	0.00	0.00	0.00	
3,800.00	12.21	106.90	3,731.96	-193.33	636.34	-193.22	0.00	0.00	0.00	
3,864.00	12.21	106.90	3,794.51	-197.27	649.29	-197.16	0.00	0.00	0.00	
<b>Begin Drop @ 3864.00ft</b>										
3,900.00	11.49	106.90	3,829.75	-199.42	656.36	-199.30	2.00	-2.00	0.00	
4,000.00	9.49	106.90	3,928.07	-204.71	673.78	-204.59	2.00	-2.00	0.00	
4,100.00	7.49	106.90	4,026.97	-209.00	687.90	-208.88	2.00	-2.00	0.00	
4,200.00	5.49	106.90	4,126.32	-212.29	698.72	-212.17	2.00	-2.00	0.00	
4,300.00	3.49	106.90	4,226.01	-214.56	706.21	-214.44	2.00	-2.00	0.00	

## Corporate Planning Report

<b>Database:</b>	PLANNING	<b>Local Co-ordinate Reference:</b>	Well BEIERLE 26-14HZ
<b>Company:</b>	US ROCKIES WATTENBERG PLANNING	<b>TVD Reference:</b>	RKB = 17' @ 5135.00usft (Drilling Rig)
<b>Project:</b>	WELD-NAD83-UTMFT13N	<b>MD Reference:</b>	RKB = 17' @ 5135.00usft (Drilling Rig)
<b>Site:</b>	1N-66W-26 BEIERLE 2-26HZ PAD	<b>North Reference:</b>	True
<b>Well:</b>	BEIERLE 26-14HZ	<b>Survey Calculation Method:</b>	Minimum Curvature
<b>Wellbore:</b>	Plan A		
<b>Design:</b>	Permit Rev-1		

Planned Survey										
Measured Depth (usft)	Inclination (°)	Azimuth (°)	Vertical Depth (usft)	+N/-S (usft)	+E/-W (usft)	Vertical Section (usft)	Dogleg Rate (°/100usft)	Build Rate (°/100usft)	Turn Rate (°/100usft)	
4,400.00	1.49	106.90	4,325.91	-215.83	710.37	-215.70	2.00	-2.00	0.00	
4,401.09	1.47	106.90	4,327.00	-215.83	710.39	-215.71	2.00	-2.00	0.00	
<b>Parkman</b>										
4,474.50	0.00	0.00	4,400.40	-216.11	711.29	-215.98	2.00	-2.00	0.00	
<b>End Drop @ 4474.50ft</b>										
4,500.00	0.00	0.00	4,425.90	-216.11	711.29	-215.98	0.00	0.00	0.00	
4,600.00	0.00	0.00	4,525.90	-216.11	711.29	-215.98	0.00	0.00	0.00	
4,700.00	0.00	0.00	4,625.90	-216.11	711.29	-215.98	0.00	0.00	0.00	
4,800.00	0.00	0.00	4,725.90	-216.11	711.29	-215.98	0.00	0.00	0.00	
4,885.10	0.00	0.00	4,811.00	-216.11	711.29	-215.98	0.00	0.00	0.00	
<b>Sussex</b>										
4,900.00	0.00	0.00	4,825.90	-216.11	711.29	-215.98	0.00	0.00	0.00	
5,000.00	0.00	0.00	4,925.90	-216.11	711.29	-215.98	0.00	0.00	0.00	
5,100.00	0.00	0.00	5,025.90	-216.11	711.29	-215.98	0.00	0.00	0.00	
5,200.00	0.00	0.00	5,125.90	-216.11	711.29	-215.98	0.00	0.00	0.00	
5,300.00	0.00	0.00	5,225.90	-216.11	711.29	-215.98	0.00	0.00	0.00	
5,400.00	0.00	0.00	5,325.90	-216.11	711.29	-215.98	0.00	0.00	0.00	
5,500.00	0.00	0.00	5,425.90	-216.11	711.29	-215.98	0.00	0.00	0.00	
5,600.00	0.00	0.00	5,525.90	-216.11	711.29	-215.98	0.00	0.00	0.00	
5,700.00	0.00	0.00	5,625.90	-216.11	711.29	-215.98	0.00	0.00	0.00	
5,800.00	0.00	0.00	5,725.90	-216.11	711.29	-215.98	0.00	0.00	0.00	
5,900.00	0.00	0.00	5,825.90	-216.11	711.29	-215.98	0.00	0.00	0.00	
6,000.00	0.00	0.00	5,925.90	-216.11	711.29	-215.98	0.00	0.00	0.00	
6,100.00	0.00	0.00	6,025.90	-216.11	711.29	-215.98	0.00	0.00	0.00	
6,200.00	0.00	0.00	6,125.90	-216.11	711.29	-215.98	0.00	0.00	0.00	
6,300.00	0.00	0.00	6,225.90	-216.11	711.29	-215.98	0.00	0.00	0.00	
6,400.00	0.00	0.00	6,325.90	-216.11	711.29	-215.98	0.00	0.00	0.00	
6,500.00	0.00	0.00	6,425.90	-216.11	711.29	-215.98	0.00	0.00	0.00	
6,600.00	0.00	0.00	6,525.90	-216.11	711.29	-215.98	0.00	0.00	0.00	
6,700.00	0.00	0.00	6,625.90	-216.11	711.29	-215.98	0.00	0.00	0.00	
6,800.00	0.00	0.00	6,725.90	-216.11	711.29	-215.98	0.00	0.00	0.00	
6,828.92	0.00	0.00	6,754.82	-216.11	711.29	-215.98	0.00	0.00	0.00	
<b>KOP @ 6828.92ft :: DLS = 8°/100'</b>										
6,900.00	5.69	0.01	6,825.79	-212.58	711.29	-212.46	8.00	8.00	0.00	
7,000.00	13.69	0.01	6,924.28	-195.77	711.30	-195.65	8.00	8.00	0.00	
7,100.00	21.69	0.01	7,019.48	-165.42	711.30	-165.29	8.00	8.00	0.00	
7,200.00	29.69	0.01	7,109.52	-122.11	711.31	-121.98	8.00	8.00	0.00	
7,300.00	37.69	0.01	7,192.66	-66.69	711.32	-66.56	8.00	8.00	0.00	
7,400.00	45.69	0.01	7,267.28	-0.23	711.34	-0.11	8.00	8.00	0.00	
7,424.36	47.64	0.01	7,284.00	17.48	711.34	17.61	8.00	8.00	0.00	
<b>Sharon Springs</b>										
7,447.02	49.45	0.01	7,299.00	34.46	711.35	34.58	8.00	8.00	0.00	
<b>Niobrara</b>										
7,500.00	53.69	0.01	7,331.93	75.95	711.35	76.08	8.00	8.00	0.00	
7,600.00	61.69	0.01	7,385.34	160.40	711.37	160.52	8.00	8.00	0.00	
7,700.00	69.69	0.01	7,426.48	251.46	711.39	251.58	8.00	8.00	0.00	
7,800.00	77.69	0.01	7,454.54	347.35	711.41	347.48	8.00	8.00	0.00	
7,811.97	78.64	0.01	7,457.00	359.07	711.41	359.19	8.00	8.00	0.00	
<b>Nio B</b>										
7,900.00	85.69	0.01	7,468.99	446.22	711.43	446.35	8.00	8.00	0.00	
7,959.58	90.45	0.01	7,471.00	505.75	711.44	505.87	8.00	8.00	0.00	
<b>End Build @ 7959.58ft - Top of Production</b>										
8,000.00	90.45	0.01	7,470.68	546.17	711.45	546.29	0.00	0.00	0.00	

## Corporate Planning Report

<b>Database:</b>	PLANNING	<b>Local Co-ordinate Reference:</b>	Well BEIERLE 26-14HZ
<b>Company:</b>	US ROCKIES WATTENBERG PLANNING	<b>TVD Reference:</b>	RKB = 17' @ 5135.00usft (Drilling Rig)
<b>Project:</b>	WELD-NAD83-UTMFT13N	<b>MD Reference:</b>	RKB = 17' @ 5135.00usft (Drilling Rig)
<b>Site:</b>	1N-66W-26 BEIERLE 2-26HZ PAD	<b>North Reference:</b>	True
<b>Well:</b>	BEIERLE 26-14HZ	<b>Survey Calculation Method:</b>	Minimum Curvature
<b>Wellbore:</b>	Plan A		
<b>Design:</b>	Permit Rev-1		

Planned Survey									
Measured Depth (usft)	Inclination (°)	Azimuth (°)	Vertical Depth (usft)	+N/-S (usft)	+E/-W (usft)	Vertical Section (usft)	Dogleg Rate (°/100usft)	Build Rate (°/100usft)	Turn Rate (°/100usft)
8,100.00	90.45	0.01	7,469.89	646.17	711.47	646.29	0.00	0.00	0.00
8,200.00	90.45	0.01	7,469.10	746.16	711.49	746.29	0.00	0.00	0.00
8,300.00	90.45	0.01	7,468.31	846.16	711.52	846.28	0.00	0.00	0.00
8,400.00	90.45	0.01	7,467.52	946.16	711.54	946.28	0.00	0.00	0.00
8,500.00	90.45	0.01	7,466.73	1,046.15	711.56	1,046.28	0.00	0.00	0.00
8,600.00	90.45	0.01	7,465.94	1,146.15	711.58	1,146.27	0.00	0.00	0.00
8,700.00	90.45	0.01	7,465.15	1,246.15	711.60	1,246.27	0.00	0.00	0.00
8,800.00	90.45	0.01	7,464.36	1,346.14	711.62	1,346.27	0.00	0.00	0.00
8,900.00	90.45	0.01	7,463.57	1,446.14	711.64	1,446.26	0.00	0.00	0.00
9,000.00	90.45	0.01	7,462.78	1,546.14	711.66	1,546.26	0.00	0.00	0.00
9,100.00	90.45	0.01	7,461.99	1,646.13	711.68	1,646.26	0.00	0.00	0.00
9,200.00	90.45	0.01	7,461.20	1,746.13	711.70	1,746.26	0.00	0.00	0.00
9,300.00	90.45	0.01	7,460.41	1,846.13	711.73	1,846.25	0.00	0.00	0.00
9,400.00	90.45	0.01	7,459.62	1,946.12	711.75	1,946.25	0.00	0.00	0.00
9,500.00	90.45	0.01	7,458.83	2,046.12	711.77	2,046.25	0.00	0.00	0.00
9,600.00	90.45	0.01	7,458.04	2,146.12	711.79	2,146.24	0.00	0.00	0.00
9,700.00	90.45	0.01	7,457.24	2,246.12	711.81	2,246.24	0.00	0.00	0.00
9,800.00	90.45	0.01	7,456.45	2,346.11	711.83	2,346.24	0.00	0.00	0.00
9,900.00	90.45	0.01	7,455.66	2,446.11	711.85	2,446.23	0.00	0.00	0.00
10,000.00	90.45	0.01	7,454.87	2,546.11	711.87	2,546.23	0.00	0.00	0.00
10,100.00	90.45	0.01	7,454.08	2,646.10	711.89	2,646.23	0.00	0.00	0.00
10,200.00	90.45	0.01	7,453.29	2,746.10	711.91	2,746.22	0.00	0.00	0.00
10,300.00	90.45	0.01	7,452.50	2,846.10	711.93	2,846.22	0.00	0.00	0.00
10,400.00	90.45	0.01	7,451.71	2,946.09	711.96	2,946.22	0.00	0.00	0.00
10,500.00	90.45	0.01	7,450.92	3,046.09	711.98	3,046.21	0.00	0.00	0.00
10,600.00	90.45	0.01	7,450.13	3,146.09	712.00	3,146.21	0.00	0.00	0.00
10,700.00	90.45	0.01	7,449.34	3,246.08	712.02	3,246.21	0.00	0.00	0.00
10,800.00	90.45	0.01	7,448.55	3,346.08	712.04	3,346.21	0.00	0.00	0.00
10,900.00	90.45	0.01	7,447.76	3,446.08	712.06	3,446.20	0.00	0.00	0.00
11,000.00	90.45	0.01	7,446.97	3,546.08	712.08	3,546.20	0.00	0.00	0.00
11,100.00	90.45	0.01	7,446.18	3,646.07	712.10	3,646.20	0.00	0.00	0.00
11,200.00	90.45	0.01	7,445.39	3,746.07	712.12	3,746.19	0.00	0.00	0.00
11,300.00	90.45	0.01	7,444.60	3,846.07	712.14	3,846.19	0.00	0.00	0.00
11,400.00	90.45	0.01	7,443.81	3,946.06	712.17	3,946.19	0.00	0.00	0.00
11,500.00	90.45	0.01	7,443.02	4,046.06	712.19	4,046.18	0.00	0.00	0.00
11,600.00	90.45	0.01	7,442.23	4,146.06	712.21	4,146.18	0.00	0.00	0.00
11,700.00	90.45	0.01	7,441.44	4,246.05	712.23	4,246.18	0.00	0.00	0.00
11,800.00	90.45	0.01	7,440.65	4,346.05	712.25	4,346.17	0.00	0.00	0.00
11,900.00	90.45	0.01	7,439.86	4,446.05	712.27	4,446.17	0.00	0.00	0.00
12,000.00	90.45	0.01	7,439.07	4,546.04	712.29	4,546.17	0.00	0.00	0.00
12,100.00	90.45	0.01	7,438.28	4,646.04	712.31	4,646.16	0.00	0.00	0.00
12,200.00	90.45	0.01	7,437.49	4,746.04	712.33	4,746.16	0.00	0.00	0.00
12,300.00	90.45	0.01	7,436.70	4,846.03	712.35	4,846.16	0.00	0.00	0.00
12,400.00	90.45	0.01	7,435.91	4,946.03	712.38	4,946.16	0.00	0.00	0.00
12,500.00	90.45	0.01	7,435.12	5,046.03	712.40	5,046.15	0.00	0.00	0.00
12,600.00	90.45	0.01	7,434.33	5,146.03	712.42	5,146.15	0.00	0.00	0.00
12,700.00	90.45	0.01	7,433.54	5,246.02	712.44	5,246.15	0.00	0.00	0.00
12,800.00	90.45	0.01	7,432.75	5,346.02	712.46	5,346.14	0.00	0.00	0.00
12,900.00	90.45	0.01	7,431.96	5,446.02	712.48	5,446.14	0.00	0.00	0.00
13,000.00	90.45	0.01	7,431.17	5,546.01	712.50	5,546.14	0.00	0.00	0.00
13,100.00	90.45	0.01	7,430.38	5,646.01	712.52	5,646.13	0.00	0.00	0.00
13,147.59	90.45	0.01	7,430.00	5,693.60	712.53	5,693.72	0.00	0.00	0.00

**TD Well @ 13147.59ft**

## Corporate Planning Report

<b>Database:</b>	PLANNING	<b>Local Co-ordinate Reference:</b>	Well BEIERLE 26-14HZ
<b>Company:</b>	US ROCKIES WATTENBERG PLANNING	<b>TVD Reference:</b>	RKB = 17' @ 5135.00usft (Drilling Rig)
<b>Project:</b>	WELD-NAD83-UTMFT13N	<b>MD Reference:</b>	RKB = 17' @ 5135.00usft (Drilling Rig)
<b>Site:</b>	1N-66W-26 BEIERLE 2-26HZ PAD	<b>North Reference:</b>	True
<b>Well:</b>	BEIERLE 26-14HZ	<b>Survey Calculation Method:</b>	Minimum Curvature
<b>Wellbore:</b>	Plan A		
<b>Design:</b>	Permit Rev-1		

Casing Points					
Measured Depth (usft)	Vertical Depth (usft)	Name	Casing Diameter (")	Hole Diameter (")	
1,516.38	1,500.00	9 5/8" Csg	9-5/8	13-1/2	
7,959.58	7,471.00	Top of Production	5-1/2	7-7/8	

Formations					
Measured Depth (usft)	Vertical Depth (usft)	Name	Lithology	Dip (°)	Dip Direction (°)
1,797.75	1,775.00	Fox Hills			
4,401.09	4,327.00	Parkman			
4,885.10	4,811.00	Sussex			
7,424.36	7,284.00	Sharon Springs			
7,447.02	7,299.00	Niobrara			
7,811.97	7,457.00	Nio B			

Plan Annotations					
Measured Depth (usft)	Vertical Depth (usft)	Local Coordinates		Comment	
		+N/-S (usft)	+E/-W (usft)		
250.00	250.00	0.00	0.00	Begin Nudge @ 250.00ft	
1,064.00	1,057.85	-25.12	82.67	End Nudge @ 1064.00ft	
3,864.00	3,794.51	-197.27	649.29	Begin Drop @ 3864.00ft	
4,474.50	4,400.40	-216.11	711.29	End Drop @ 4474.50ft	
6,828.92	6,754.82	-216.11	711.29	KOP @ 6828.92ft :: DLS = 8°/100'	
7,959.58	7,471.00	505.75	711.44	End Build @ 7959.58ft	
13,147.59	7,430.00	5,693.60	712.53	TD Well @ 13147.59ft	