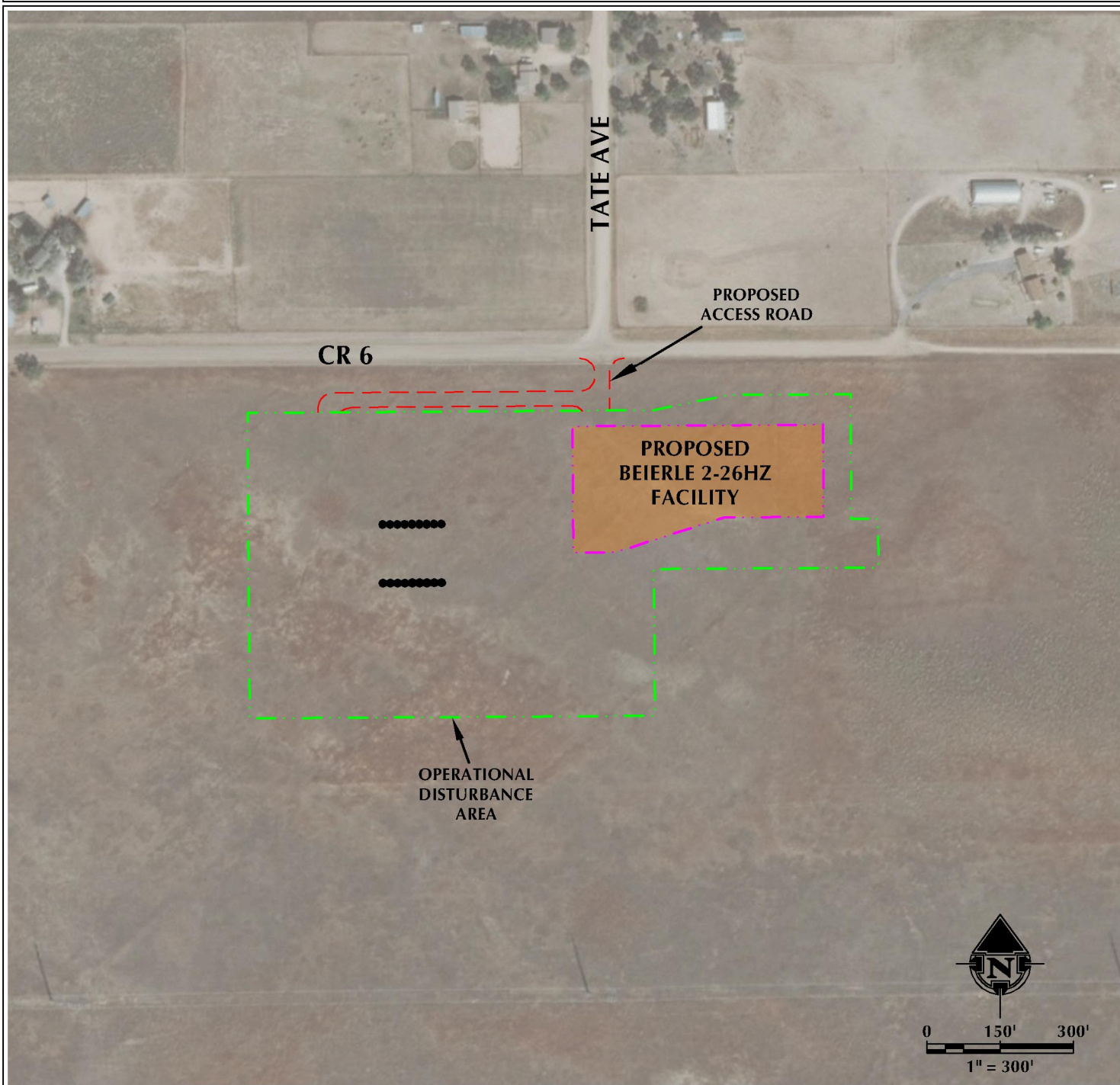


BEIERLE 2-26HZ ACCESS MAP

N1/2 NE1/4 SECTION 26, TOWNSHIP 1 NORTH, RANGE 66 WEST, 6TH P.M.



LEGEND

- PROPOSED WELL
- - - ACCESS
- PROPOSED FACILITY
- - - DISTURBANCE BOUNDARY

INTERSECTION OF
ACCESS ROAD AND CR 6
LATITUDE: 40.029537°
LONGITUDE: -104.739733°



609 CONSULTING, LLC
LOVELAND OFFICE
1635 Fossil Drive, Suite 204
Loveland, Colorado 80538
Phone: 970-776-4331

SHERIDAN OFFICE
1095 Saberton Avenue
Sheridan, Wyoming 82801
Phone: 307-674-0609

DATE SURVEYED: 5/7/18
DATE: 5/24/18
DRAFTER: DD
REVISED: 5/29/18

DATA SOURCES:
- AERIAL COURTESY OF ESRI, INC.

PREPARED FOR:
Kerr-McGee Oil & Gas Onshore L.P.