

LOCATION: NE1/4 OF NE1/4 OF SEC. 14, T.3N., R.65W. (560 NSL, 1274 ESL)

Ground Elevation: 4813

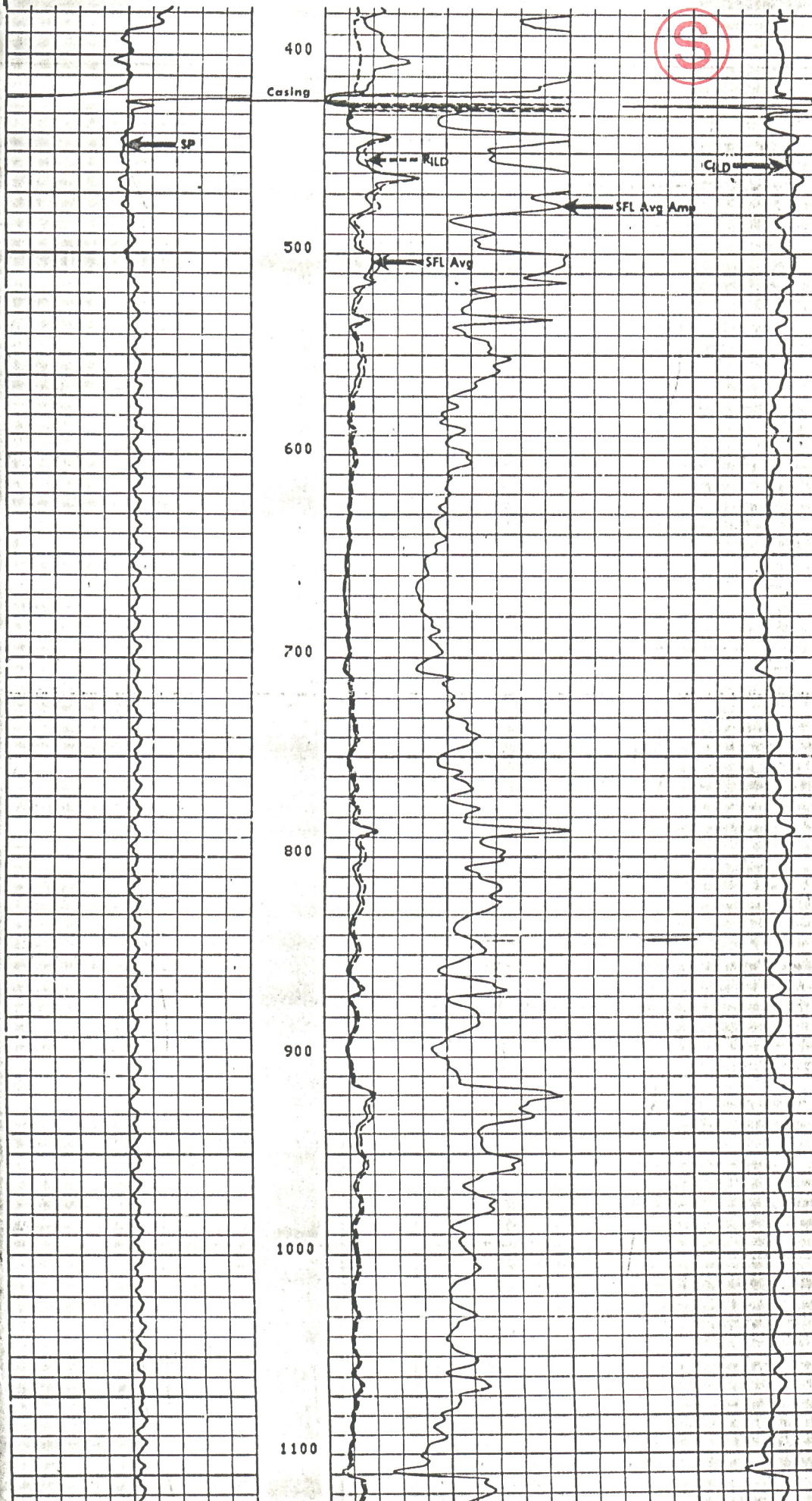
Number of Acres: 40

AQUIFER	ELEVATION		NET SAND	DEPTH TO		ANNUAL APPROP A-F	STATUS
	BOT.	TOP		BOT.	TOP		
UPPER DAWSON	----	----	----	----	----	----	----
LOWER DAWSON	----	----	----	----	----	----	----
DENVER	----	----	----	----	----	----	----
UPPER ARAPAHOE	----	----	----	----	----	----	----
LOWER ARAPAHOE	----	----	----	----	----	----	----
LARAMIE-FOX HILLS	4305	4638	178.7	508	175	10.72	NT

note: E indicates location is at aquifer boundary and values may be more approximate.



surf csg must be set
50' below Fox Hills
transition and 5%
of total depth



INDUCTION - SFL

FOLD HERE The well name, location and borehole reference data were furnished by the customer.

All interpretations are opinions based on inferences from electrical or other measurements and we cannot, and do not guarantee the accuracy or correctness of any interpretations, and we shall not, except in the case of gross or willful negligence on our part, be liable or responsible for any loss, costs, damages or expenses incurred or sustained by anyone resulting from any interpretation made by any of our officers, agents or employees. These interpretations are also subject to our General Terms and Conditions as set out in our current Price Schedule.

```

ILD  SONDE ERROR CORRECTION :      4.4  MMHO
ILM  SONDE ERROR CORRECTION :      5.7  MMHO
      FILE

```


**Colorado
Oil & Gas Conservation Commission**



COGCC Results

Selected Items Report

Oil and Gas Wells Selected			
Filter Results by Formation Include <input type="checkbox"/>		CODL <input type="checkbox"/> J-CDL <input type="checkbox"/> JNCSX <input type="checkbox"/>	<input type="button" value="Filter"/>
WELL DESCRIPTION	LOCATION	WELL INFORMATION	
05-123-16932, KERR-MCGEE ROCKY MOUNTAIN CORP , 16-11 HSR-CALIENTE	SESE 11 3N -65W (6)	Sidetrack TD Formation Status 00 7228 SUSX PR	
05-123-17162, KERR-MCGEE ROCKY MOUNTAIN CORP , 12-11 HSR-BOST	NESW 11 3N -65W (6)	Sidetrack TD Formation Status 00 8137 JSND PR 00 8137 NB-CD PR 00 8137 SUSX PR	
05-123-17163, KERR-MCGEE ROCKY MOUNTAIN CORP , 13-11 HSR-KATE	NESW 11 3N -65W (6)	Sidetrack TD Formation Status 00 7968 NB-CD PR 00 7968 SUSX PR	
05-123-17164, KERR-MCGEE ROCKY MOUNTAIN CORP , 14-11 HSR-NICHOLAS	NESW 11 3N -65W (6)	Sidetrack TD Formation Status 00 7422 NB-CD PR 00 7422 NBCSX PR 00 7422 SUSX PR	
05-123-17196, KERR-MCGEE ROCKY MOUNTAIN CORP , 10-11 HSR-CULLEN	NWSE 11 3N -65W (6)	Sidetrack TD Formation Status 00 7236 NB-CD PR 00 7236 SUSX PR	
05-123-16246, KERR-MCGEE ROCKY MOUNTAIN CORP , 15-11 HSR-GULICK	SWSE 11 3N -65W (6)	Sidetrack TD Formation Status 00 7960 JNCSX PR 00 7960 JSND RC 00 7960 NB-CD PR 00 7960 SUSX PR	
05-123-16931, KERR-MCGEE ROCKY MOUNTAIN CORP , 9-11 HSR-PORTER	NESE 11 3N -65W (6)	Sidetrack TD Formation Status 00 7251 NB-CD PR 00 7251 SUSX PR	
05-123-16932, KERR-MCGEE ROCKY MOUNTAIN CORP , 16-11 HSR-CALIENTE	SESE 11 3N -65W (6)	Sidetrack TD Formation Status 00 7228 NB-CD PR 00 7228 NBCSX RC	
05-123-17161, KERR-MCGEE ROCKY MOUNTAIN CORP , 11-11 HSR-LIBBY	NESW 11 3N -65W (6)	Sidetrack TD Formation Status 00 7449 NB-CD PR 00 7449 SUSX PR	
05-123-13346, PRIMA OIL & GAS COMPANY , 11-1 CPC BEEBE DRAW	NWNE 11 3N -65W (6)	Sidetrack TD Formation Status 00 7235 NB-CD PR	
05-123-13904, PRIMA OIL & GAS COMPANY , 11-2 BEEBE DRAW	SWNE 11 3N -65W (6)	Sidetrack TD Formation Status 00 7924 CODL PR 00 7924 JSND TA	
05-123-14217, PRIMA OIL & GAS COMPANY , 11-1 ARISTOCRAT	SENE 11 3N -65W (6)	Sidetrack TD Formation Status 00 7320 CODL PR	
05-123-14462, PRIMA OIL & GAS COMPANY , 11-2 ARISTOCRAT	NENE 11 3N -65W (6)	Sidetrack TD Formation Status 00 7219 CODL PR	
05-123-15208, PRIMA OIL & GAS COMPANY , 11-24 ARISTOCRAT	SENE 11 3N -65W (6)	Sidetrack TD Formation Status 00 7203 NB-CD PR	
05-123-12481, PATINA OIL & GAS CORPORATION , 12-05 STROH H	SWNW 12 3N -65W (6)	Sidetrack TD Formation Status 00 7710 CODL PR 00 7710 J-CDL 00 7710 JSND SI	
05-123-15771, PATINA OIL & GAS CORPORATION , H 12-10 STROH	NWSE 12 3N -65W (6)	Sidetrack TD Formation Status 00 7307 CODL PR 00 7307 SUSX PR	

05-123-15772, PATINA OIL & GAS CORPORATION , H 12-15 STROH	SWSE 12 3N -65W (6)	Sidetrack TD Formation Status 00 7309 CODL PR 00 7309 SUSX PR
05-123-15741, PATINA OIL & GAS CORPORATION , H 12-06 STROH	SEnw 12 3N -65W (6)	Sidetrack TD Formation Status 00 7264 CODL PR 00 7264 SUSX PR
05-123-15742, PATINA OIL & GAS CORPORATION , H 12-11 STROH	NESW 12 3N -65W (6)	Sidetrack TD Formation Status 00 7295 CODL PR 00 7295 SUSX SI
05-123-15743, PATINA OIL & GAS CORPORATION , H 12-12 STROH	NWSW 12 3N -65W (6)	Sidetrack TD Formation Status 00 7280 CODL PR 00 7280 SUSX PR
05-123-15744, PATINA OIL & GAS CORPORATION , 12-13 STROH H	SWSW 12 3N -65W (6)	Sidetrack TD Formation Status 00 7310 CODL PR 00 7310 SUSX PR
05-123-09660, PATINA OIL & GAS CORPORATION , 12-14 STROH H	SESW 12 3N -65W (6)	Sidetrack TD Formation Status 00 7740 CODL PR 00 7740 J-CDL PR 00 7740 JSND PR
05-123-15187, PATINA OIL & GAS CORPORATION , 13-11J UPRC	NESW 13 3N -65W (6)	Sidetrack TD Formation Status 00 7244 NB-CD PR 00 7244 SUSX PR
05-123-17494, PATINA OIL & GAS CORPORATION , 13-10J UPRC	NWSE 13 3N -65W (6)	Sidetrack TD Formation Status 00 7310 NB-CD PR 00 7310 SUSX TA
05-123-20873, UNITED STATES EXPLORATION INC , 32-13 CLINGAN	SWNE 13 3N -65W (6)	Sidetrack TD Formation Status
05-123-17493, PATINA OIL & GAS CORPORATION , 13-4J UPRC	NWNW 13 3N -65W (6)	Sidetrack TD Formation Status 00 7278 NB-CD PR 00 7278 SUSX SI
05-123-07244, KERR-MCGEE ROCKY MOUNTAIN CORP , 1 UPRR 39 PAN AM B	SWSW 13 3N -65W (6)	Sidetrack TD Formation Status 00 7720 SUSX PR
05-123-17087, PATINA OIL & GAS CORPORATION , 13-13J UPRC	SWSW 13 3N -65W (6)	Sidetrack TD Formation Status 00 7265 NB-CD PR
05-123-15230, PATINA OIL & GAS CORPORATION , 13-14J UPRC	SESW 13 3N -65W (6)	Sidetrack TD Formation Status 00 7240 CODL PR 00 7240 SUSX PR
05-123-07244, KERR-MCGEE ROCKY MOUNTAIN CORP , 1 UPRR 39 PAN AM B	SWSW 13 3N -65W (6)	Sidetrack TD Formation Status 00 7720 JSND PR
05-123-17494, PATINA OIL & GAS CORPORATION , 13-10J UPRC	NWSE 13 3N -65W (6)	Sidetrack TD Formation Status 00 7310 CODL PR
05-123-17085, PATINA OIL & GAS CORPORATION , 13-5J UPRC	SWNW 13 3N -65W (6)	Sidetrack TD Formation Status 00 7272 NB-CD PR 00 7272 NBCSX RC 00 7272 SUSX PR
05-123-17086, PATINA OIL & GAS CORPORATION , 13-12J UPRC	NWSW 13 3N -65W (6)	Sidetrack TD Formation Status 00 7244 NB-CD PR
05-123-17493, PATINA OIL & GAS CORPORATION , 13-4J UPRC	NWNW 13 3N -65W (6)	Sidetrack TD Formation Status 00 7278 CODL
05-123-17460, KERR-MCGEE ROCKY MOUNTAIN CORP , 13-2 MOORE UPRC H	NWNE 13 3N -65W (6)	Sidetrack TD Formation Status 00 7279 NB-CD PR
05-123-07294, AMOCO PRODUCTION CO. , 39 UPRR PAN AM B 2	NWNW 13 3N -65W (6)	Sidetrack TD Formation Status 00 4595 UNK PA
05-123-16997, PATINA OIL & GAS CORPORATION , 13-6J UPRC	SEnw 13 3N -65W (6)	Sidetrack TD Formation Status 00 7271 CODL PR
05-123-17264, PATINA OIL & GAS CORPORATION , 13-3J UPRC	NENW 13 3N -65W (6)	Sidetrack TD Formation Status 00 7308 CODL PR 00 7308 NB-CD PR 00 7308 SUSX TA

05-123-17315, PATINA OIL & GAS CORPORATION , H 14-10 WILCOX	SWSE 14 3N -65W (6)	Sidetrack TD Formation Status 00 7672 NB-CD PR 00 7672 SUSX TA
05-123-17480, PATINA OIL & GAS CORPORATION , 14-3J WILCOX 'H'	SWSE 14 3N -65W (6)	Sidetrack TD Formation Status 00 8082 JSND RC 00 8082 NB-CD PR 00 8082 SUSX PR
05-123-17478, PATINA OIL & GAS CORPORATION , H 14-11 WILCOX	SWSE 14 3N -65W (6)	Sidetrack TD Formation Status 00 7754 NB-CD PR 00 7754 SUSX PR
05-123-17479, PATINA OIL & GAS CORPORATION , H 14-13 WILCOX	SWSE 14 3N -65W (6)	Sidetrack TD Formation Status 00 7940 NBRR PR 00 7940 SUSX PR
05-123-15745, PATINA OIL & GAS CORPORATION , H 14-09 BOHLENDER	NESE 14 3N -65W (6)	Sidetrack TD Formation Status 00 7263 CODL PR 00 7263 SUSX TA 00 7263 SX-CD SI
05-123-15746, PATINA OIL & GAS CORPORATION , H 14-15 BOHLENDER	SWSE 14 3N -65W (6)	Sidetrack TD Formation Status 00 7258 CODL PR 00 7258 SUSX TA 00 7258 SX-CD RC
05-123-21374, KERR-MCGEE ROCKY MOUNTAIN CORP , 1-14 FRICO	NENE 14 3N -65W (6)	Sidetrack TD Formation Status
05-123-21375, KERR-MCGEE ROCKY MOUNTAIN CORP , 8-14 FRICO	SENE 14 3N -65W (6)	Sidetrack TD Formation Status
05-123-10450, PATINA OIL & GAS CORPORATION , 1 BOHLENDER	SESE 14 3N -65W (6)	Sidetrack TD Formation Status 00 7747 CODL PR 00 7747 JSND SI

Facilities Selected

FACILITY DESCRIPTION	LOCATION	PIT INFORMATION		
		Type	Unlined	Status

Water Wells Selected

Filter Results by Depth

WELL DESCRIPTION	LOCATION	WELL INFORMATION			
		Depth	Top Perf	Bottom Perf	Aquifer
Receipt=0349153, Permit=0168780--, ARISTOCRAT ANGUS/HOUSTON BEN	NESE 11 3N-65W	290	210	290	KLF
Receipt=0081097, Permit=0090815--, KILVER MERLE	NWSE 12 3N-65W	0	0	0	GW
Receipt=9064424, Permit=0044911--, HUMPHREYS RICHARD	NWSE 12 3N-65W	310	0	0	GW
Receipt=0227248, Permit=0111719--A, WALKER R V	NWSE 12 3N-65W	340	260	340	GW
Receipt=0313237, Permit=0111719--A, JONES RICHARD W	NWSE 12 3N-65W	0	0	0	KLF
Receipt=0111932, Permit=0111719--, GOGGIN S R	NWSE 12 3N-65W	0	0	0	GW
Receipt=0203994, Permit=0114365--A, BROWNELL L L	NESW 12 3N-65W	0	0	0	GW
Receipt=9065400, Permit=0075900--, TEMPLE JERRY R.	NESW 12 3N-65W	350	0	0	GW
Receipt=9064794, Permit=0055239--, DOWNING MYRON	NESW 12 3N-65W	330	242	330	GW
Receipt=9064260, Permit=0042085--, WANEKA GEORGE & BROWN ROBERT E	NWSW 12 3N-65W	400	0	0	GW
Receipt=0356663, Permit=0173084--, BEELER DAVID L & SUSAN E RANDOLPH	NWSW 12 3N-65W	330	246	330	KLF
Receipt=0264851, Permit=0042084--A, HOLE RALPH E & SHARON L	NWSW 12 3N-65W	311	274	311	KLF
Receipt=0344832, Permit=0167123--, BUROUGH DAVID L OR SHARAY B	NWSW 12 3N-65W	340	260	340	KLF
Receipt=9064259, Permit=0042084--, GRIESER MERLE	NWSW 12	311	0	0	GW

	3N-65W				
Receipt=0345083, Permit=0167155--, CANNONE JOSEPH H & CONNIE NEHRBOSS	SESW 12 3N-65W	315	235	315	KLF
Receipt=0106609, Permit=0107127--, CUMMINGS RUSSELL	SWSW 12 3N-65W	400	243	400	GW
Receipt=9064396, Permit=0044393--, FARMER RESERVOIR IRRIGATION	SWSW 12 3N-65W	320	0	0	GW
Receipt=0212526, Permit=0044393--A, FARMERS RESERVOIR	SWSW 12 3N-65W	0	0	0	KLF
Receipt=0059695, Permit=0078667--, NEILSON HERBERT R & LINDA L	NWNE 13 3N-65W	270	220	270	GW
Receipt=0252505, Permit=0028417-F-, CLINGAN E G	SWNE 13 3N-65W	0	0	0	GW
Receipt=0907920, Permit=0066492--, TE TAEALT JOSEPH	NENW 13 3N-65W	0	0	0	GW
Receipt=9064898, Permit=0059264--, BARTHOLD ROBERT G	NWNW 13 3N-65W	220	0	0	GW
Receipt=0907265, Permit=0063858--, NOLAND HAROLD E & BONNIE L	NWNW 13 3N-65W	0	0	0	GW
Receipt=9065453, Permit=0077496--, YOUNG GERALD L.	NWNW 13 3N-65W	350	0	0	GW
Receipt=0234177, Permit=0130054--, BOCKIUS W	SENW 13 3N-65W	0	0	0	GW
Receipt=0907200, Permit=0063476--, LARABE WILLIAM L.	SENW 13 3N-65W	0	0	0	GW
Receipt=9065023, Permit=0064053--, CARSON RONALD H	SWNW 13 3N-65W	320	0	0	GW
Receipt=0442403, Permit=0217420--, CHARF MARK E	NWSE 13 3N-65W	385	240	385	KLF
Receipt=9064989, Permit=0063018--, FOGG WALTER R	NESW 13 3N-65W	340	0	0	GW
Receipt=9064783, Permit=0054993--, HAMILTON JACK R	NESW 13 3N-65W	281	0	0	GW
Receipt=9065083, Permit=0066510--, SWANSON LARRY O	NESW 13 3N-65W	340	0	0	GW
Receipt=0255656, Permit=0063018--A, MC INTOSH R I	NESW 13 3N-65W	0	0	0	KLF
Receipt=0038812, Permit=0016770-F-, BRAMWELL GERALD J.	NWSW 13 3N-65W	0	0	0	GW
Receipt=0442866, Permit=0217085--, BULLARD RICHARD O ETAL	SESW 13 3N-65W	450	255	450	GW
Receipt=0208574, Permit=0117868--, THOMPSON J	SESW 13 3N-65W	0	0	0	GW
Receipt=9065055, Permit=0065561--, KOLB LOUIS E	SWSW 13 3N-65W	350	0	0	GW
Receipt=0411529, Permit=0202283--, GREEN JUSTIN & KARRIE	SWSW 13 3N-65W	0	0	0	KLF
Receipt=0023999, Permit=0055118--, FARMER LARRY G	NESE 14 3N-65W	0	0	0	GW
Receipt=9065010, Permit=0063505--, IVEY DIXIE	SESE 14 3N-65W	320	0	0	GW
Receipt=0441250B, Permit=0215639--A, GREEN JUSTIN & KARRIE	SESE 14 3N-65W	340	270	320	KLF
Receipt=0493778, Permit=0242476--, GATTAR ANTHONY & BARBARA M	SESE 14 3N-65W	340	280	320	KLF
Receipt=0475330, Permit=0234416--, GATTAR ANTHONY	SESE 14 3N-65W	340	280	320	GW
Receipt=0441250A, Permit=0215639--, VAN BEBER MARK & LYNETTE	SESE 14 3N-65W	250	0	0	GW