

# Minimum Curvature Directional Program

## Frico 2-14

NENE Sec. 14 T3N R65W

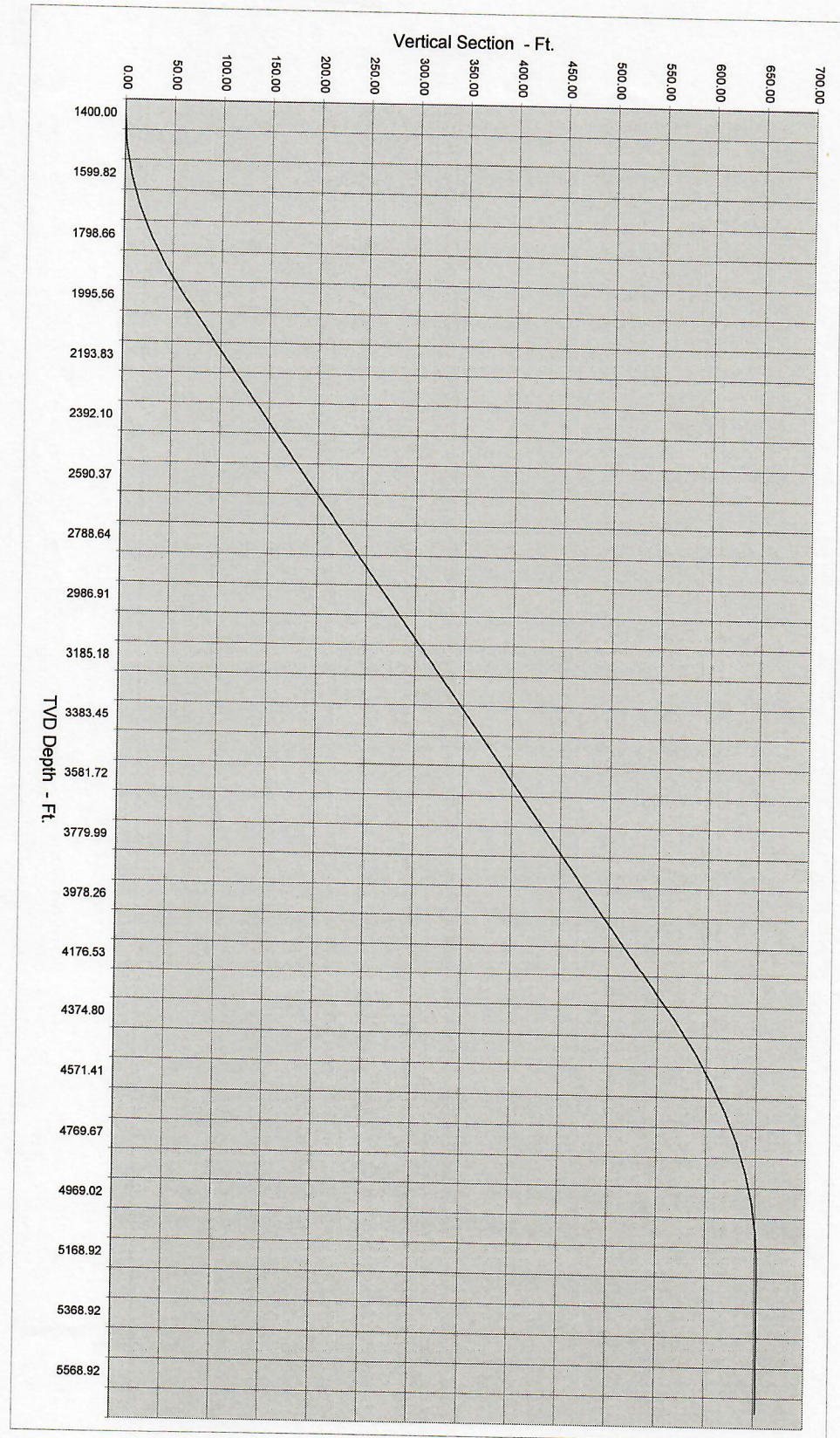
Surface Location: 560' FNL &amp; 1274' FEL

Bottomhole Location: 800' FNL &amp; 1880' FEL

Target Azimuth 248.39 degrees

Measured Depth	Inclination Degrees	Azimuth Degrees	TVD Feet	d North	North Feet	d East	East Feet	DOGLEG Severity	Vertical Section
0	0.00	248.39							
500	0.00	248.39	500.00	0.00	0.00	0.00	0.00	0.00	0.00
1,400	0.00	248.39	1400.00	0.00	0.00	0.00	0.00	0.00	0.00
1,500	2.00	248.39	1499.97	-0.64	-0.64	-1.62	-1.62	2.00	1.75
1,600	4.00	248.39	1599.82	-1.93	-2.57	-4.87	-6.49	2.00	6.98
1,700	6.00	248.39	1699.42	-3.21	-5.78	-8.10	-14.59	2.00	15.69
1,800	8.00	248.39	1798.66	-4.49	-10.27	-11.33	-25.92	2.00	27.88
1,900	10.00	248.39	1897.41	-5.76	-16.02	-14.54	-40.46	2.00	43.52
2,000	12.00	248.39	1995.56	-7.02	-23.05	-17.74	-58.20	2.00	62.60
2,101	12.00	248.39	2094.70	-7.76	-30.81	-19.59	-77.79	0.00	83.67
2,203	12.00	248.39	2193.83	-7.76	-38.57	-19.59	-97.38	0.00	104.74
2,304	12.00	248.39	2292.97	-7.76	-46.33	-19.59	-116.97	0.00	125.81
2,405	12.00	248.39	2392.10	-7.76	-54.09	-19.59	-136.56	0.00	146.88
2,507	12.00	248.39	2491.24	-7.76	-61.84	-19.59	-156.16	0.00	167.96
2,608	12.00	248.39	2590.37	-7.76	-69.60	-19.59	-175.75	0.00	189.03
2,709	12.00	248.39	2689.51	-7.76	-77.36	-19.59	-195.34	0.00	210.10
2,811	12.00	248.39	2788.64	-7.76	-85.12	-19.59	-214.93	0.00	231.17
2,912	12.00	248.39	2887.78	-7.76	-92.88	-19.59	-234.52	0.00	252.24
3,013	12.00	248.39	2986.91	-7.76	-100.64	-19.59	-254.11	0.00	273.32
3,115	12.00	248.39	3086.05	-7.76	-108.40	-19.59	-273.70	0.00	294.39
3,216	12.00	248.39	3185.18	-7.76	-116.16	-19.59	-293.30	0.00	315.46
3,318	12.00	248.39	3284.31	-7.76	-123.92	-19.59	-312.89	0.00	336.53
3,419	12.00	248.39	3383.45	-7.76	-131.67	-19.59	-332.48	0.00	357.60
3,520	12.00	248.39	3482.58	-7.76	-139.43	-19.59	-352.07	0.00	378.67
3,622	12.00	248.39	3581.72	-7.76	-147.19	-19.59	-371.66	0.00	399.75
3,723	12.00	248.39	3680.85	-7.76	-154.95	-19.59	-391.25	0.00	420.82
3,824	12.00	248.39	3779.99	-7.76	-162.71	-19.59	-410.84	0.00	441.89
3,926	12.00	248.39	3879.12	-7.76	-170.47	-19.59	-430.43	0.00	462.96
4,027	12.00	248.39	3978.26	-7.76	-178.23	-19.59	-450.03	0.00	484.03
4,128	12.00	248.39	4077.39	-7.76	-185.99	-19.59	-469.62	0.00	505.10
4,230	12.00	248.39	4176.53	-7.76	-193.75	-19.59	-489.21	0.00	526.18
4,331	12.00	248.39	4275.66	-7.76	-201.50	-19.59	-508.80	0.00	547.25
4,432	12.00	248.39	4374.80	-7.76	-209.26	-19.59	-528.39	0.00	568.32
4,532	10.50	248.39	4472.87	-7.18	-216.45	-18.14	-546.53	1.50	587.83
4,632	9.00	248.39	4571.41	-6.24	-222.68	-15.74	-562.27	1.50	604.76
4,732	7.50	248.39	4670.37	-5.28	-227.96	-13.34	-575.61	1.50	619.11
4,832	6.00	248.39	4769.67	-4.33	-232.29	-10.93	-586.54	1.50	630.86
4,932	4.50	248.39	4869.24	-3.37	-235.66	-8.51	-595.04	1.50	640.01
5,032	3.00	248.39	4969.02	-2.41	-238.07	-6.08	-601.12	1.50	646.55
5,132	1.50	248.39	5068.93	-1.45	-239.51	-3.65	-604.77	1.50	650.48
5,232	0.00	248.39	5168.92	-0.48	-240.00	-1.22	-605.99	1.50	651.79
5,332	0.00	248.39	5268.92	0.00	-240.00	0.00	-605.99	0.00	651.79
5,432	0.00	248.39	5368.92	0.00	-240.00	0.00	-605.99	0.00	651.79
5,532	0.00	248.39	5468.92	0.00	-240.00	0.00	-605.99	0.00	651.79
5,632	0.00	248.39	5568.92	0.00	-240.00	0.00	-605.99	0.00	651.79
5,732	0.00	248.39	5668.92	0.00	-240.00	0.00	-605.99	0.00	651.79
5,832	0.00	248.39	5768.92	0.00	-240.00	0.00	-605.99	0.00	651.79
5,932	0.00	248.39	5868.92	0.00	-240.00	0.00	-605.99	0.00	651.79
6,032	0.00	248.39	5968.92	0.00	-240.00	0.00	-605.99	0.00	651.79
6,132	0.00	248.39	6068.92	0.00	-240.00	0.00	-605.99	0.00	651.79
6,232	0.00	248.39	6168.92	0.00	-240.00	0.00	-605.99	0.00	651.79
6,332	0.00	248.39	6268.92	0.00	-240.00	0.00	-605.99	0.00	651.79
6,432	0.00	248.39	6368.92	0.00	-240.00	0.00	-605.99	0.00	651.79
6,532	0.00	248.39	6468.92	0.00	-240.00	0.00	-605.99	0.00	651.79
6,632	0.00	248.39	6568.92	0.00	-240.00	0.00	-605.99	0.00	651.79
6,732	0.00	248.39	6668.92	0.00	-240.00	0.00	-605.99	0.00	651.79
6,832	0.00	248.39	6768.92	0.00	-240.00	0.00	-605.99	0.00	651.79
6,932	0.00	248.39	6868.92	0.00	-240.00	0.00	-605.99	0.00	651.79
7,032	0.00	248.39	6968.92	0.00	-240.00	0.00	-605.99	0.00	651.79
7,132	0.00	248.39	7068.92	0.00	-240.00	0.00	-605.99	0.00	651.79
7,332	0.00	248.39	7268.92	0.00	-240.00	0.00	-605.99	0.00	651.79

Frico 2-14



## Plan View

### Frico 2-14

NENE Sec. 14 T3N R65W

Surface Location: 560' FNL & 1274' FEL

Bottomhole Location: 800' FNL & 1880' FEL

Target Azimuth 248.39 degrees

Vertical Section 651.7944 ft.

East	North	
0.0	0.0	0.0
130.4	-121.2	-48.0
260.7	-242.4	-96.0
391.1	-363.6	-144.0
521.4	-484.8	-192.0
651.8	-606.0	-240.0

