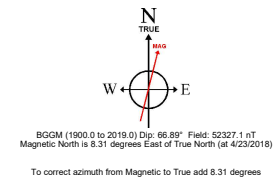
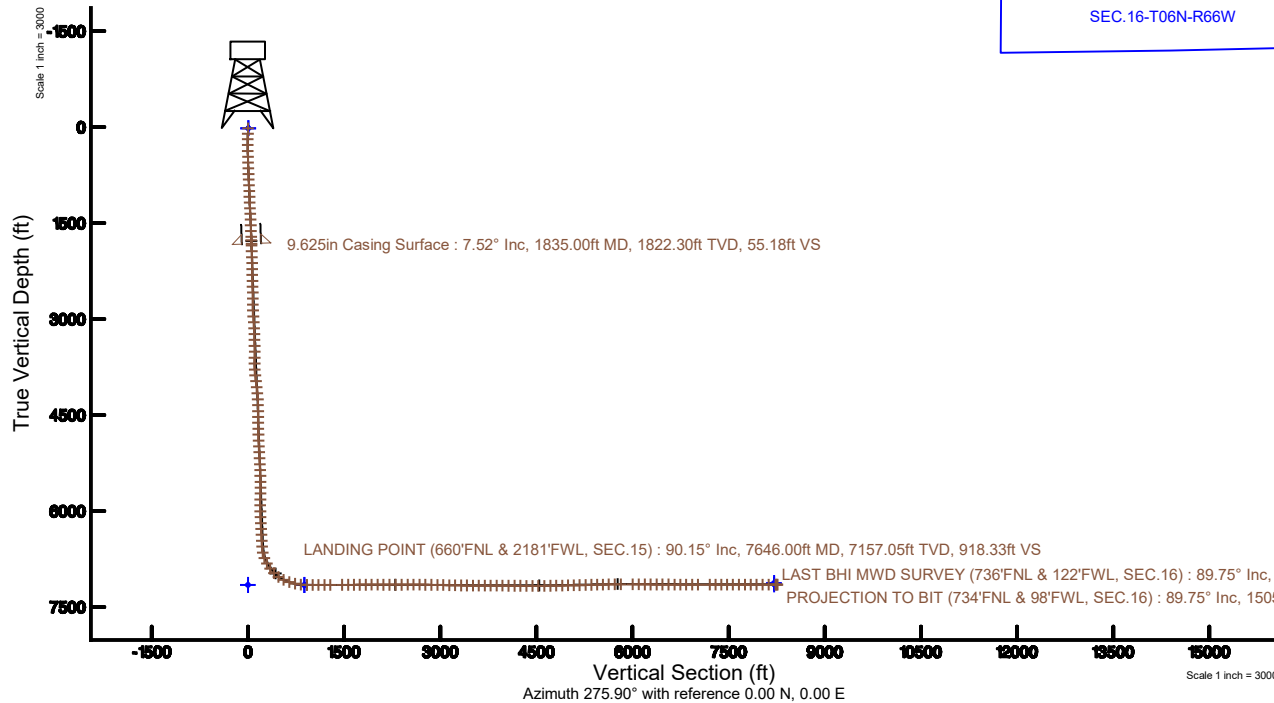
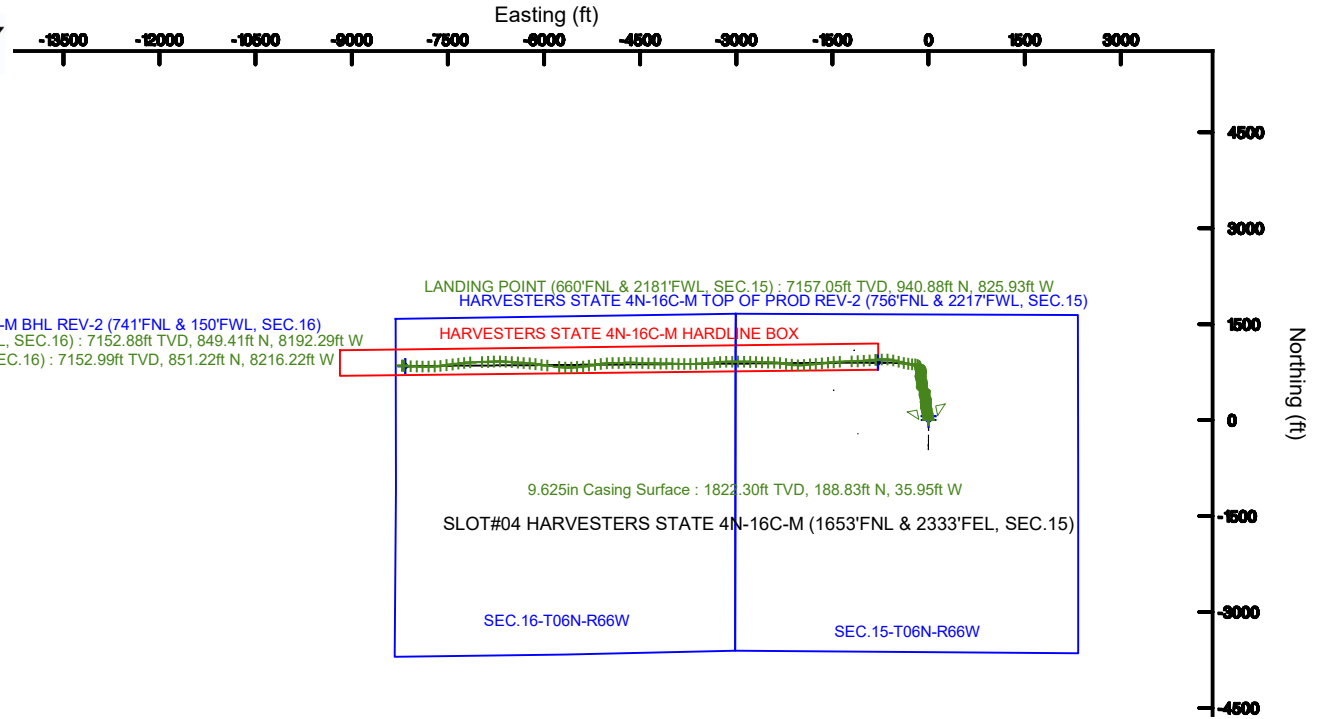


# SRC ENERGY

Location: COLORADO Slot: SLOT#04 HARVESTERS STATE 4N-16C-M (1653'FNL & 2333'FEL, SEC.15)  
Field: WELD COUNTY (NAD83,TRUE NORTH) Well: HARVESTERS STATE 4N-16C-M  
Facility: SEC.15-T06N-R66W Wellbore: HARVESTERS STATE 4N-16C-M PWB

Plot reference wellpath is HARVESTERS STATE 4N-16C-M (REV-C.0) PWP	Grid System: NAD83 / Lambert Colorado SP, Northern Zone (501), US feet
True vertical depths are referenced to PRECISION 462 (20') (RKB)	* = Wellpath was transformed from a different geodetic datum
Measured depths are referenced to PRECISION 462 (20') (RKB)	North Reference: True north
PRECISION 462 (20') (RKB) to Mean Sea Level: 4822 feet	Scale: True distance
Mean Sea Level to Mud line (At Slot: SLOT#04 HARVESTERS STATE 4N-16C-M (1653'FNL & 2333'FEL, SEC.15)): 0 feet	Depths are in feet
Coordinates are in feet referenced to Slot	Created by: doddanna on 2018-06-06
	Database: WellArchitectIDB





# Actual Wellpath Report

HARVESTERS STATE 4N-16C-M AWP

Page 1 of 9



## REFERENCE WELLPATH IDENTIFICATION

Operator	SRC ENERGY	Slot	SLOT#04 HARVESTERS STATE 4N-16C-M (1653'FNL & 2333'FEL, SEC.15)
Area	COLORADO	Well	HARVESTERS STATE 4N-16C-M
Field	WELD COUNTY (NAD83, TRUE NORTH)	Wellbore	HARVESTERS STATE 4N-16C-M AWB
Facility	SEC.15-T06N-R66W		

## REPORT SETUP INFORMATION

Projection System	NAD83 / Lambert Colorado SP, Northern Zone (501), US feet	Software System	WellArchitect® 5.0
North Reference	True	User	Doddanna
Scale	0.999966	Report Generated	6/6/2018 at 12:11:02 PM
Convergence at slot	0.48° East	Database/Source file	WellArchitectDB/HARVESTERS_STATE_4N-16C-M_AWP.xml

## WELLPATH LOCATION

	Local coordinates		Grid coordinates		Geographic coordinates	
	North[ft]	East[ft]	Easting[US ft]	Northing[US ft]	Latitude	Longitude
Slot Location	-59.71	-0.54	3205120.87	1422588.82	40°29'27.838"N	104°45'45.029"W
Facility Reference Pt			3205120.91	1422648.52	40°29'28.428"N	104°45'45.022"W
Field Reference Pt			3171284.48	1426358.81	40°30'07.643"N	104°53'02.634"W

## WELLPATH DATUM

Calculation method	Minimum curvature	PRECISION 462 (20') (RKB) to Facility Vertical Datum	4822.00ft
Horizontal Reference Pt	Slot	PRECISION 462 (20') (RKB) to Mean Sea Level	4822.00ft
Vertical Reference Pt	PRECISION 462 (20') (RKB)	PRECISION 462 (20') (RKB) to Mud Line at Slot (SLOT#04 HARVESTERS STATE 4N-16C-M (1653'FNL & 2333'FEL, SEC.15))	4822.00ft
MD Reference Pt	PRECISION 462 (20') (RKB)	Section Origin	N 0.00, E 0.00 ft
Field Vertical Reference	Mean Sea Level	Section Azimuth	275.90°



# Actual Wellpath Report

## HARVESTERS STATE 4N-16C-M AWP

Page 2 of 9



REFERENCE WELLPATH IDENTIFICATION			
Operator	SRC ENERGY	Slot	SLOT#04 HARVESTERS STATE 4N-16C-M (1653'FNL & 2333'FEL, SEC.15)
Area	COLORADO	Well	HARVESTERS STATE 4N-16C-M
Field	WELD COUNTY (NAD83, TRUE NORTH)	Wellbore	HARVESTERS STATE 4N-16C-M AWP
Facility	SEC.15-T06N-R66W		

WELLPATH DATA (162 stations) † = interpolated/extrapolated station								
MD [ft]	Inclination [°]	Azimuth [°]	TVD [ft]	Vert Sect [ft]	North [ft]	East [ft]	DLS [°/100ft]	Comments
0.00†	0.000	110.440	0.00	0.00	0.00	0.00	0.00	
20.00	0.000	110.440	20.00	0.00	0.00	0.00	0.00	
102.00	0.930	110.440	102.00	-0.64	-0.23	0.62	1.13	
189.00	0.550	70.590	188.99	-1.71	-0.34	1.68	0.71	
280.00	1.070	12.090	279.98	-2.19	0.64	2.27	1.00	
373.00	2.460	347.430	372.94	-1.65	3.43	2.02	1.67	
464.00	4.720	347.390	463.75	0.16	8.99	0.77	2.48	
554.00	6.290	350.550	553.33	2.64	17.47	-0.84	1.78	
644.00	7.670	347.770	642.67	5.81	28.20	-2.93	1.58	
734.00	7.980	348.200	731.83	9.58	40.19	-5.48	0.35	
824.00	8.050	347.700	820.95	13.45	52.46	-8.10	0.11	
914.00	7.980	349.130	910.07	17.22	64.75	-10.62	0.23	
1004.00	8.110	350.130	999.18	20.75	77.14	-12.88	0.21	
1094.00	7.960	349.080	1088.30	24.28	89.52	-15.15	0.23	
1184.00	7.580	350.170	1177.47	27.69	101.48	-17.35	0.45	
1274.00	8.440	346.370	1266.59	31.51	113.75	-19.92	1.12	
1364.00	8.340	344.950	1355.63	36.05	126.47	-23.17	0.26	
1454.00	8.190	347.480	1444.70	40.41	139.04	-26.25	0.44	
1544.00	7.760	347.750	1533.83	44.33	151.23	-28.93	0.48	
1634.00	7.540	350.430	1623.03	47.80	162.99	-31.20	0.47	
1724.00	7.630	350.120	1712.24	51.00	174.70	-33.21	0.11	
1782.00	7.320	348.880	1769.75	53.13	182.12	-34.58	0.60	
1861.00	7.620	347.660	1848.07	56.25	192.18	-36.67	0.43	
1954.00	8.160	353.050	1940.20	59.64	204.75	-38.79	0.98	
2048.00	8.350	353.110	2033.22	62.64	218.15	-40.41	0.20	
2142.00	7.890	356.900	2126.28	65.16	231.37	-41.58	0.75	
2234.00	7.930	2.770	2217.41	66.50	244.01	-41.62	0.88	
2327.00	7.800	358.880	2309.53	67.62	256.73	-41.43	0.59	
2421.00	8.000	350.810	2402.64	70.10	269.56	-42.60	1.20	
2513.00	7.530	351.360	2493.80	73.28	281.84	-44.53	0.52	



# Actual Wellpath Report

## HARVESTERS STATE 4N-16C-M AWP

Page 3 of 9



REFERENCE WELLPATH IDENTIFICATION			
Operator	SRC ENERGY	Slot	SLOT#04 HARVESTERS STATE 4N-16C-M (1653'FNL & 2333'FEL, SEC.15)
Area	COLORADO	Well	HARVESTERS STATE 4N-16C-M
Field	WELD COUNTY (NAD83,TRUE NORTH)	Wellbore	HARVESTERS STATE 4N-16C-M AWP
Facility	SEC.15-T06N-R66W		

WELLPATH DATA (162 stations)								
MD [ft]	Inclination [°]	Azimuth [°]	TVD [ft]	Vert Sect [ft]	North [ft]	East [ft]	DLS [°/100ft]	Comments
2607.00	7.910	5.000	2586.95	74.93	294.38	-44.89	1.99	
2701.00	7.840	6.250	2680.07	75.00	307.19	-43.63	0.20	
2796.00	7.860	0.410	2774.18	75.58	320.13	-42.87	0.84	
2888.00	7.990	343.980	2865.31	78.57	332.57	-44.59	2.46	
2982.00	7.720	335.820	2958.43	84.17	344.61	-48.98	1.22	
3075.00	7.790	338.610	3050.58	90.19	356.17	-53.84	0.41	
3169.00	8.030	342.170	3143.69	95.76	368.36	-58.17	0.58	
3261.00	7.540	350.660	3234.84	99.93	380.43	-61.12	1.36	
3354.00	7.700	356.110	3327.02	102.60	392.67	-62.54	0.80	
3446.00	7.880	359.530	3418.17	104.35	405.12	-63.00	0.54	
3540.00	7.630	7.560	3511.32	104.88	417.75	-62.24	1.18	
3633.00	7.690	9.790	3603.49	104.28	430.00	-60.37	0.33	
3726.00	8.040	7.160	3695.61	103.72	442.59	-58.50	0.54	
3819.00	8.450	342.490	3787.68	106.29	455.56	-59.74	3.80	
3913.00	8.080	307.100	3880.76	114.69	466.14	-67.09	5.34	
4005.00	8.150	305.290	3971.84	125.90	473.81	-77.57	0.29	
4100.00	8.440	310.490	4065.85	137.51	482.23	-88.37	0.85	
4195.00	7.980	322.080	4159.88	147.82	491.96	-97.73	1.80	
4289.00	8.270	345.570	4252.96	154.69	503.65	-103.43	3.52	
4383.00	7.960	357.130	4346.03	158.03	516.70	-105.44	1.76	
4476.00	8.020	5.470	4438.13	159.06	529.59	-105.14	1.25	
4569.00	8.410	6.570	4530.18	159.03	542.81	-103.74	0.45	
4662.00	8.400	1.860	4622.18	159.43	556.35	-102.74	0.74	
4756.00	8.480	355.740	4715.16	161.14	570.13	-103.04	0.96	
4849.00	8.560	352.680	4807.14	163.93	583.83	-104.43	0.49	
4942.00	8.680	353.200	4899.09	167.06	597.66	-106.14	0.15	
5035.00	9.080	349.540	4990.97	170.67	611.85	-108.30	0.74	
5128.00	9.030	342.930	5082.81	175.59	626.04	-111.78	1.12	
5222.00	8.240	338.170	5175.75	181.60	639.35	-116.45	1.13	
5316.00	8.340	347.990	5268.77	186.83	652.27	-120.37	1.51	



SRC ENERGY

# Actual Wellpath Report

HARVESTERS STATE 4N-16C-M AWP

Page 4 of 9

**BAKER  
HUGHES****REFERENCE WELLPATH IDENTIFICATION**

Operator	SRC ENERGY	Slot	SLOT#04 HARVESTERS STATE 4N-16C-M (1653'FNL & 2333'FEL, SEC.15)
Area	COLORADO	Well	HARVESTERS STATE 4N-16C-M
Field	WELD COUNTY (NAD83, TRUE NORTH)	Wellbore	HARVESTERS STATE 4N-16C-M AWB
Facility	SEC.15-T06N-R66W		

**WELLPATH DATA (162 stations)**

MD [ft]	Inclination [°]	Azimuth [°]	TVD [ft]	Vert Sect [ft]	North [ft]	East [ft]	DLS [°/100ft]	Comments
5408.00	8.820	351.080	5359.74	190.69	665.76	-122.85	0.72	
5500.00	8.190	354.290	5450.73	193.81	679.25	-124.60	0.86	
5594.00	8.360	3.160	5543.76	195.49	692.74	-124.89	1.37	
5687.00	7.930	8.360	5635.82	195.54	705.83	-123.58	0.92	
5780.00	7.950	9.690	5727.93	194.84	718.52	-121.57	0.20	
5874.00	8.050	11.080	5821.01	193.81	731.39	-119.21	0.23	
5966.00	7.870	5.590	5912.13	193.27	743.98	-117.36	0.85	
6060.00	7.880	356.090	6005.25	194.40	756.81	-117.17	1.38	
6153.00	7.840	347.410	6097.37	197.50	769.36	-118.99	1.28	
6245.00	8.070	345.420	6188.49	201.75	781.74	-121.98	0.39	
6338.00	8.500	349.590	6280.52	205.97	794.81	-124.87	0.79	
6431.00	7.910	346.010	6372.57	210.07	807.78	-127.66	0.84	
6524.00	8.340	342.860	6464.63	214.89	820.44	-131.19	0.67	
6618.00	8.250	337.020	6557.65	220.82	833.16	-135.83	0.90	
6711.00	14.380	317.430	6648.83	232.70	847.83	-146.26	7.69	
6804.00	21.890	296.270	6737.24	257.66	864.05	-169.68	10.62	
6897.00	28.510	272.080	6821.57	296.20	872.56	-207.55	13.03	
6990.00	35.320	271.560	6900.46	345.21	874.10	-256.66	7.33	
7084.00	44.590	278.790	6972.48	405.43	879.89	-316.59	11.02	
7177.00	55.450	282.180	7032.15	476.32	893.00	-386.51	12.00	
7270.00	66.850	285.030	7076.96	556.89	912.24	-465.51	12.55	
7366.00	70.510	282.610	7111.86	645.44	933.57	-552.34	4.48	
7459.00	77.940	274.800	7137.16	734.70	946.99	-640.68	11.36	
7552.00	83.710	266.110	7152.01	825.96	947.66	-732.36	11.11	
7646.00	90.150	265.610	7157.05	918.33	940.88	-825.93	6.87	LANDING POINT (660'FNL & 2181'FWL, SEC.15)
7740.00	90.580	265.560	7156.45	1010.81	933.65	-919.65	0.46	
7833.00	90.280	265.410	7155.75	1102.28	926.33	-1012.36	0.36	
7927.00	90.490	267.150	7155.12	1194.95	920.23	-1106.15	1.86	
8020.00	90.180	269.820	7154.57	1287.16	917.77	-1199.11	2.89	
8206.00	90.150	266.590	7154.04	1471.46	911.94	-1384.99	1.74	



# Actual Wellpath Report

## HARVESTERS STATE 4N-16C-M AWP

Page 5 of 9



REFERENCE WELLPATH IDENTIFICATION			
Operator	SRC ENERGY	Slot	SLOT#04 HARVESTERS STATE 4N-16C-M (1653'FNL & 2333'FEL, SEC.15)
Area	COLORADO	Well	HARVESTERS STATE 4N-16C-M
Field	WELD COUNTY (NAD83, TRUE NORTH)	Wellbore	HARVESTERS STATE 4N-16C-M AWP
Facility	SEC.15-T06N-R66W		

WELLPATH DATA (162 stations)								
MD [ft]	Inclination [°]	Azimuth [°]	TVD [ft]	Vert Sect [ft]	North [ft]	East [ft]	DLS [°/100ft]	Comments
8299.00	89.880	264.870	7154.01	1562.99	905.02	-1477.73	1.87	
8393.00	90.150	263.840	7153.99	1655.09	895.77	-1571.27	1.13	
8486.00	90.220	263.900	7153.69	1746.04	885.84	-1663.74	0.10	
8580.00	90.400	265.410	7153.18	1838.23	877.09	-1757.33	1.62	
8674.00	90.000	265.860	7152.85	1930.72	869.93	-1851.06	0.64	
8768.00	89.850	263.810	7152.97	2022.97	861.47	-1944.67	2.19	
8861.00	89.720	273.360	7153.32	2115.11	859.18	-2037.53	10.27	
8956.00	90.150	275.570	7153.43	2210.07	866.57	-2132.24	2.37	
9048.00	90.120	279.360	7153.22	2302.02	878.52	-2223.44	4.12	
9143.00	89.940	276.800	7153.17	2396.94	891.87	-2317.49	2.70	
9237.00	90.370	270.820	7152.91	2490.84	898.12	-2411.24	6.38	
9330.00	89.970	271.490	7152.63	2583.52	899.99	-2504.22	0.84	
9423.00	89.750	271.920	7152.86	2676.26	902.76	-2597.18	0.52	
9517.00	89.600	272.140	7153.40	2770.05	906.09	-2691.12	0.28	
9611.00	89.010	272.660	7154.54	2863.87	910.03	-2785.03	0.84	
9703.00	88.920	271.500	7156.20	2955.64	913.36	-2876.95	1.26	
9797.00	88.860	270.070	7158.02	3049.25	914.65	-2970.92	1.52	
9890.00	88.460	268.880	7160.19	3141.64	913.80	-3063.89	1.35	
9983.00	88.740	267.630	7162.47	3233.78	910.97	-3156.82	1.38	
10077.00	89.600	266.190	7163.83	3326.61	905.90	-3250.67	1.78	
10171.00	89.630	265.400	7164.46	3419.15	899.01	-3344.41	0.84	
10263.00	89.630	265.410	7165.05	3509.61	891.64	-3436.11	0.01	
10357.00	89.850	266.070	7165.48	3602.13	884.66	-3529.85	0.74	
10452.00	89.600	267.900	7165.94	3695.98	879.66	-3624.72	1.94	
10545.00	89.480	269.480	7166.68	3788.23	877.53	-3717.68	1.70	
10639.00	89.600	270.390	7167.44	3881.72	877.43	-3811.68	0.98	
10731.00	89.820	270.900	7167.90	3973.33	878.46	-3903.67	0.60	
10824.00	89.600	271.100	7168.37	4065.99	880.09	-3996.66	0.32	
10919.00	89.750	271.040	7168.91	4160.65	881.86	-4091.64	0.17	
11011.00	89.850	271.430	7169.23	4252.34	883.84	-4183.62	0.44	



# Actual Wellpath Report

## HARVESTERS STATE 4N-16C-M AWP

Page 6 of 9



### REFERENCE WELLPATH IDENTIFICATION

Operator	SRC ENERGY	Slot	SLOT#04 HARVESTERS STATE 4N-16C-M (1653'FNL & 2333'FEL, SEC.15)
Area	COLORADO	Well	HARVESTERS STATE 4N-16C-M
Field	WELD COUNTY (NAD83, TRUE NORTH)	Wellbore	HARVESTERS STATE 4N-16C-M AWP
Facility	SEC.15-T06N-R66W		

### WELLPATH DATA (162 stations)

MD [ft]	Inclination [°]	Azimuth [°]	TVD [ft]	Vert Sect [ft]	North [ft]	East [ft]	DLS [°/100ft]	Comments
11105.00	89.630	271.650	7169.66	4346.07	886.37	-4277.58	0.33	
11198.00	89.690	271.570	7170.21	4438.81	888.98	-4370.54	0.11	
11291.00	89.630	271.660	7170.76	4531.54	891.60	-4463.51	0.12	
11384.00	91.050	271.560	7170.21	4624.28	894.22	-4556.47	1.53	
11478.00	91.140	270.350	7168.42	4717.91	895.78	-4650.43	1.29	
11571.00	91.020	268.390	7166.66	4810.29	894.76	-4743.41	2.11	
11664.00	91.080	268.210	7164.96	4902.45	892.00	-4836.35	0.20	
11756.00	91.200	270.260	7163.13	4993.81	890.77	-4928.32	2.23	
11849.00	91.170	264.240	7161.20	5085.69	886.31	-5021.15	6.47	
11942.00	91.420	262.600	7159.10	5176.46	875.66	-5113.51	1.78	
12036.00	91.380	262.600	7156.80	5267.91	863.56	-5206.70	0.04	
12129.00	91.540	261.750	7154.43	5358.22	850.90	-5298.80	0.93	
12222.00	91.230	263.310	7152.19	5448.67	838.81	-5390.98	1.71	
12316.00	91.350	265.420	7150.07	5540.74	829.59	-5484.50	2.25	
12408.00	91.450	265.650	7147.82	5631.21	822.43	-5576.19	0.27	
12501.00	89.880	274.830	7146.74	5723.65	822.82	-5669.08	10.01	
12595.00	89.750	276.620	7147.04	5817.65	832.19	-5762.61	1.91	
12782.00	89.820	275.020	7147.75	6004.64	851.16	-5948.64	0.86	
12875.00	89.910	279.040	7147.97	6097.60	862.53	-6040.92	4.32	
12968.00	89.630	276.720	7148.34	6190.54	875.28	-6133.04	2.51	
13061.00	89.750	275.510	7148.84	6283.53	885.19	-6225.50	1.31	
13154.00	89.720	274.240	7149.27	6376.52	893.09	-6318.16	1.37	
13246.00	89.970	273.560	7149.52	6468.46	899.35	-6409.95	0.79	
13340.00	90.030	275.290	7149.52	6562.42	906.60	-6503.67	1.84	
13433.00	89.850	272.700	7149.62	6655.37	913.08	-6596.43	2.79	
13525.00	89.820	271.060	7149.88	6747.13	916.10	-6688.38	1.78	
13618.00	89.910	266.750	7150.10	6839.42	914.32	-6781.34	4.64	
13711.00	90.250	268.080	7149.97	6931.40	910.13	-6874.24	1.48	
13804.00	89.880	268.740	7149.87	7023.60	907.55	-6967.21	0.81	
13990.00	90.000	267.070	7150.06	7207.79	900.75	-7153.08	0.90	



# Actual Wellpath Report

## HARVESTERS STATE 4N-16C-M AWP

Page 7 of 9



### REFERENCE WELLPATH IDENTIFICATION

Operator	SRC ENERGY	Slot	SLOT#04 HARVESTERS STATE 4N-16C-M (1653'FNL & 2333'FEL, SEC.15)
Area	COLORADO	Well	HARVESTERS STATE 4N-16C-M
Field	WELD COUNTY (NAD83,TRUE NORTH)	Wellbore	HARVESTERS STATE 4N-16C-M AWB
Facility	SEC.15-T06N-R66W		

### WELLPATH DATA (162 stations)

MD [ft]	Inclination [°]	Azimuth [°]	TVD [ft]	Vert Sect [ft]	North [ft]	East [ft]	DLS [°/100ft]	Comments
14082.00	89.820	262.810	7150.21	7298.09	892.64	-7244.70	4.63	
14174.00	90.000	262.960	7150.35	7387.72	881.24	-7335.99	0.25	
14267.00	90.150	263.610	7150.23	7478.47	870.37	-7428.35	0.72	
14359.00	89.820	262.950	7150.25	7568.25	859.60	-7519.72	0.80	
14455.00	89.660	263.080	7150.69	7661.83	847.93	-7615.00	0.21	
14549.00	89.910	266.700	7151.04	7754.08	839.56	-7708.61	3.86	
14642.00	89.780	270.370	7151.29	7846.30	837.18	-7801.57	3.95	
14734.00	89.820	270.820	7151.61	7937.90	838.13	-7893.56	0.49	
14827.00	89.660	271.240	7152.04	8030.56	839.81	-7986.54	0.48	
14920.00	89.820	272.410	7152.46	8123.33	842.77	-8079.49	1.27	
15033.00	89.750	274.330	7152.88	8236.21	849.41	-8192.29	1.70	LAST BHI MWD SURVEY (736'FNL & 122'FWL, SEC.16)
15057.00	89.750	274.330	7152.99	8260.20	851.22	-8216.22	0.00	PROJECTION TO BIT (734'FNL & 98'FWL, SEC.16)

### HOLE & CASING SECTIONS

- Ref Wellbore: HARVESTERS STATE 4N-16C-M AWB      Ref Wellpath: HARVESTERS STATE 4N-16C-M AWP

String/Diameter	Start MD [ft]	End MD [ft]	Interval [ft]	Start TVD [ft]	End TVD [ft]	Start N/S [ft]	Start E/W [ft]	End N/S [ft]	End E/W [ft]
13.5in Open Hole	20.00	1835.00	1815.00	20.00	1822.30	0.00	0.00	188.83	-35.95
9.625in Casing Surface	20.00	1835.00	1815.00	20.00	1822.30	0.00	0.00	188.83	-35.95
8.5in Open Hole	1835.00	15057.00	13222.00	1822.30	7152.99	188.83	-35.95	851.22	-8216.22





# Actual Wellpath Report

## HARVESTERS STATE 4N-16C-M AWP

Page 8 of 9



REFERENCE WELLPATH IDENTIFICATION			
Operator	SRC ENERGY	Slot	SLOT#04 HARVESTERS STATE 4N-16C-M (1653'FNL & 2333'FEL, SEC.15)
Area	COLORADO	Well	HARVESTERS STATE 4N-16C-M
Field	WELD COUNTY (NAD83, TRUE NORTH)	Wellbore	HARVESTERS STATE 4N-16C-M AWB
Facility	SEC.15-T06N-R66W		

TARGETS								
Name	TVD [ft]	North [ft]	East [ft]	Grid East [US ft]	Grid North [US ft]	Latitude	Longitude	Shape
SEC.15-T06N-R66W	16.00	59.71	0.54	3205120.91	1422648.52	40°29'28.428"N	104°45'45.022"W	polygon
SEC.16-T06N-R66W	16.00	59.71	0.54	3205120.91	1422648.52	40°29'28.428"N	104°45'45.022"W	polygon
HARVESTERS STATE 4N-16C-M BHL ON PLAT (741'FNL & 150'FWL, SEC.16)	7126.00	844.34	-8164.41	3196950.01	1423365.20	40°29'36.168"N	104°47'30.703"W	point
HARVESTERS STATE 4N-16C-M BHL REV-2 (741'FNL & 150'FWL, SEC.16)	7147.59	844.34	-8164.41	3196950.01	1423365.20	40°29'36.168"N	104°47'30.703"W	point
HARVESTERS STATE 4N-16C-M HARDLINE BOX	7156.12	0.00	0.00	3205120.87	1422588.82	40°29'27.838"N	104°45'45.029"W	polygon
HARVESTERS STATE 4N-16C-M TOP OF PROD REV-2 (756'FNL & 2217'FWL, SEC.15)	7156.12	899.84	-790.17	3204323.27	1423482.02	40°29'36.730"N	104°45'55.256"W	point
HARVESTERS STATE 4N-16C-M TOP OF PROD ON PLAT (756'FNL & 2217'FWL, SEC.15)	7158.00	899.84	-790.17	3204323.27	1423482.02	40°29'36.730"N	104°45'55.256"W	point

WELLPATH COMPOSITION - Ref Wellbore: HARVESTERS STATE 4N-16C-M AWB				Ref Wellpath: HARVESTERS STATE 4N-16C-M AWP	
Start MD [ft]	End MD [ft]	Positional Uncertainty Model	Log Name/Comment		Wellbore
20.00	1782.00	BHI NaviTrak (Rotating+Axial Corr)	13 1/2" SURFACE SURVEYS <86'-1766'>		HARVESTERS STATE 4N-16C-M AWB
1782.00	15033.00	BHI AutoTrak Curve (IFR1, Short)	8 1/2" MONOBORE SURVEYS <1861'-15033'>		HARVESTERS STATE 4N-16C-M AWB
15033.00	15057.00	Blind Drilling (std)	Projection to bit		HARVESTERS STATE 4N-16C-M AWB



SRC ENERGY

# Actual Wellpath Report

HARVESTERS STATE 4N-16C-M AWP

Page 9 of 9



## REFERENCE WELLPATH IDENTIFICATION

Operator	SRC ENERGY	Slot	SLOT#04 HARVESTERS STATE 4N-16C-M (1653'FNL & 2333'FEL, SEC.15)
Area	COLORADO	Well	HARVESTERS STATE 4N-16C-M
Field	WELD COUNTY (NAD83,TRUE NORTH)	Wellbore	HARVESTERS STATE 4N-16C-M AWB
Facility	SEC.15-T06N-R66W		

## WELLPATH COMMENTS

MD [ft]	Inclination [°]	Azimuth [°]	TVD [ft]	Comment
7646.00	90.150	265.610	7157.05	LANDING POINT (660'FNL & 2181'FWL, SEC.15)
15033.00	89.750	274.330	7152.88	LAST BHI MWD SURVEY (736'FNL & 122'FWL, SEC.16)
15057.00	89.750	274.330	7152.99	PROJECTION TO BIT (734'FNL & 98'FWL, SEC.16)